

5.9 Study Area 9 – Turtle Creek / Wilmerding

These findings apply to ALCOSAN Points of Connection T-10 through T-15, T-16A, T-17, and T-19 through T-24, which include combined sewer systems in Turtle Creek Borough and Wilmerding Borough.

Turtle Creek / Wilmerding - BMP GIS Features

The SUSTAIN BMP siting tool analysis resulted in identification of a total of 2,580 BMP GIS Features covering 137 acres, which consisted of the following:

Table 5.9-1 - TOTAL SUSTAIN BMP Features Output

SUSTAIN BMP Feature Type	Number of Features	Area of BMP Features (Acres)
Permeable Pavement	458	32
Bioretention	770	40
Infiltration Basin/Trenches	290	15
Vegetated Filter Strips	337	27
Grass Swales	713	23
Constructed Wetlands	12	< 1

Locations of all identified BMP GIS features are presented on the SUSTAIN BMP Features Figure.

Turtle Creek / Wilmerding - Concept Municipal GSI Projects

Based on the BMP features, 171 concept Municipal GSI Projects were identified covering 12 total acres with a corresponding drainage area delineation of 134 total acres and consisted of the following:

Table 5.9-2 - Summary of Identified Concept Municipal GSI Projects

Concept GSI Technology	Number of Projects	GSI Project Area (Acres)	Project Drainage Area (Acres)
Permeable Pavement	50	9	79
Bioretention	109	3	47
Infiltration Basin/Trenches	10	< 1	7
Vegetated Filter Strips	2	< 1	1
Grass Swales	0	0	0
Constructed Wetlands	0	0	0

Project statistics including ALCOSAN POC, model subcatchment, BMP type, project area, area of project inside and outside of the public right-of-way, tributary drainage area, and tributary impervious drainage area are provided in the Concept Municipal Projects Table. Locations of all identified Concept Municipal GSI projects are presented in the Concept Municipal GSI Projects Figure (1) and the corresponding delineated tributary drainage areas are presented by BMP in the Individual Project Drainage Area Figures (4).

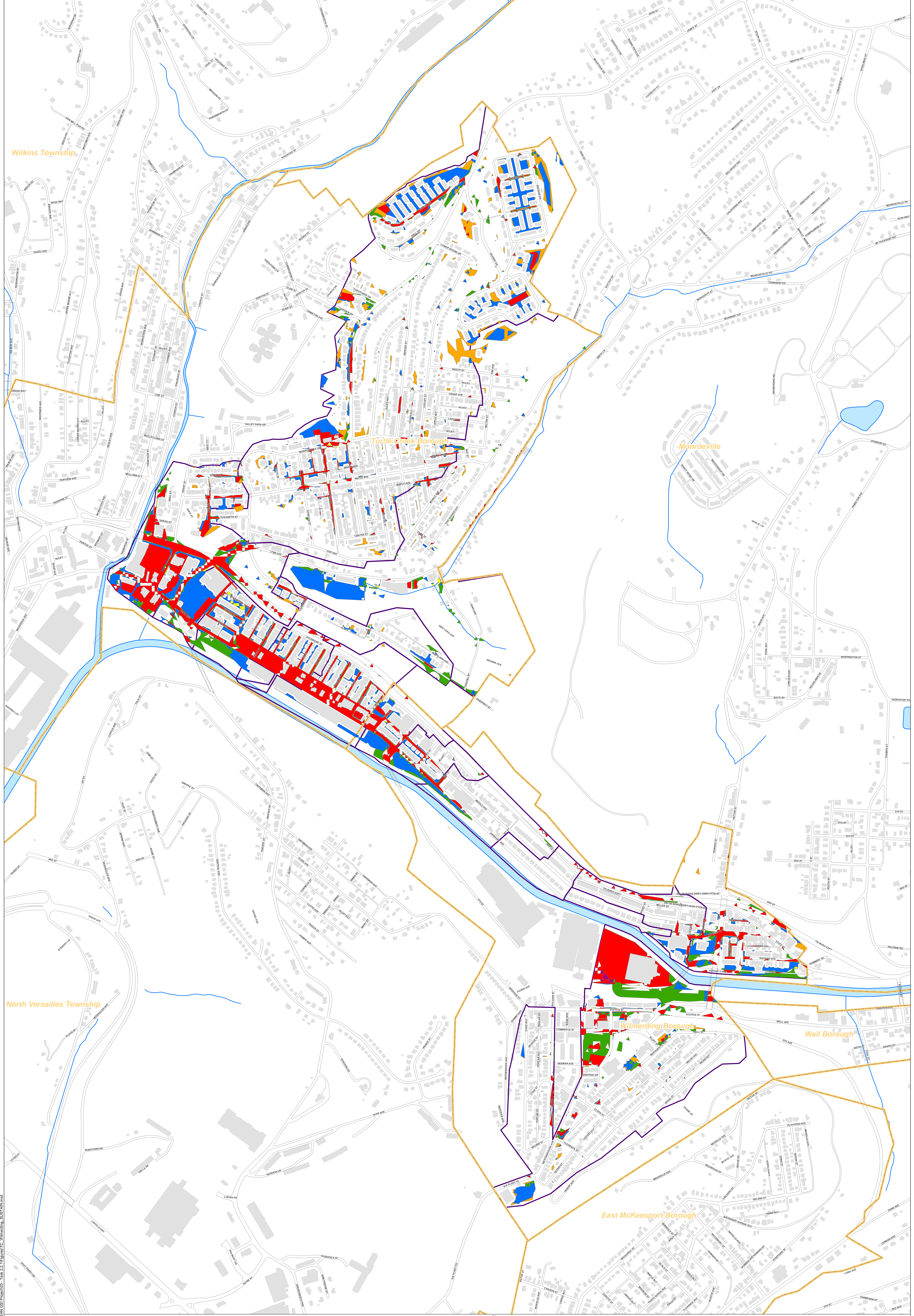
Turtle Creek / Wilmerding - Concept Commercial/Institutional and Special Case GSI Projects

Based on the BMP features, 93 concept Commercial/Institutional and Special Case GSI Projects were identified covering 39 total acres and consisted of the following:

Table 5.9-3 - Summary of Identified Concept Commercial/Institutional and Special Case GSI Projects

Concept GSI Technology or Special Case Project Category	Number of Projects	GSI Project Area (Acres)
Commercial/Institutional Permeable Pavement	36	13
Commercial/Institutional Green Roofs	36	14
State Route Permeable Pavement	21	11
Busway Permeable Pavement	0	0
Busway Bioretention	0	0

Project statistics including ALCOSAN POC, model subcatchment, BMP type, project area, area of project taxable, exempt, provisionally exempt and in the public right-of-way are provided in Concept Commercial / Institutional GSI Projects Table. Locations of all identified Concept Commercial / Institutional GSI projects are presented in the Concept Commercial / Institutional GSI Projects Figure (1).



Wilkins Township

Turtle Creek Borough

Monroville

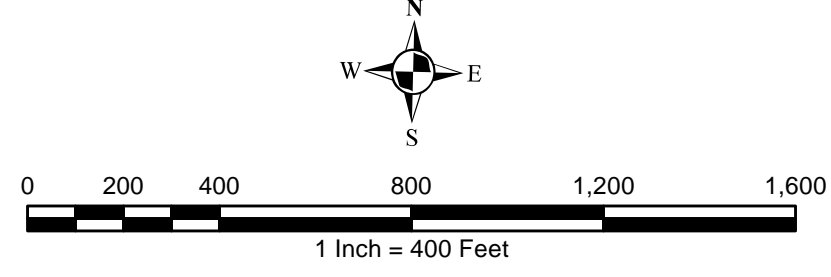
North Versailles Township

Wilmerding Borough

Wall Borough

East McKeesport Borough

- Permeable Pavement
- Vegetated Filter Strips
- Combined Sewer Subcatchment
- Bioretention Basin
- Grass Swales
- Municipal Boundaries
- Infiltration Basin / Trench
- Constructed Wetlands



ALCOSAN GSI Project
 Turtle Creek - Wilmerding T-10 thru T-24
 SUSTAIN BMP Features

Path: I:\PROJECTS\3434\ALCOSAN GSI Project\3434 - Task 2.1\Figures\TC_Wilmerding_SUSTAIN.mxd

TC-Wilmerding Concept Municipal Projects: Individual Drainage Areas

March 31, 2014

Revised October 7, 2014

*Note: The drainage area presented in this table is representative of the individual drainage area tributary to each concept municipal project without any revisions to account for overlap, without engineering judgment revisions applied, and without the drainage areas being clipped to their corresponding model subcatchments.

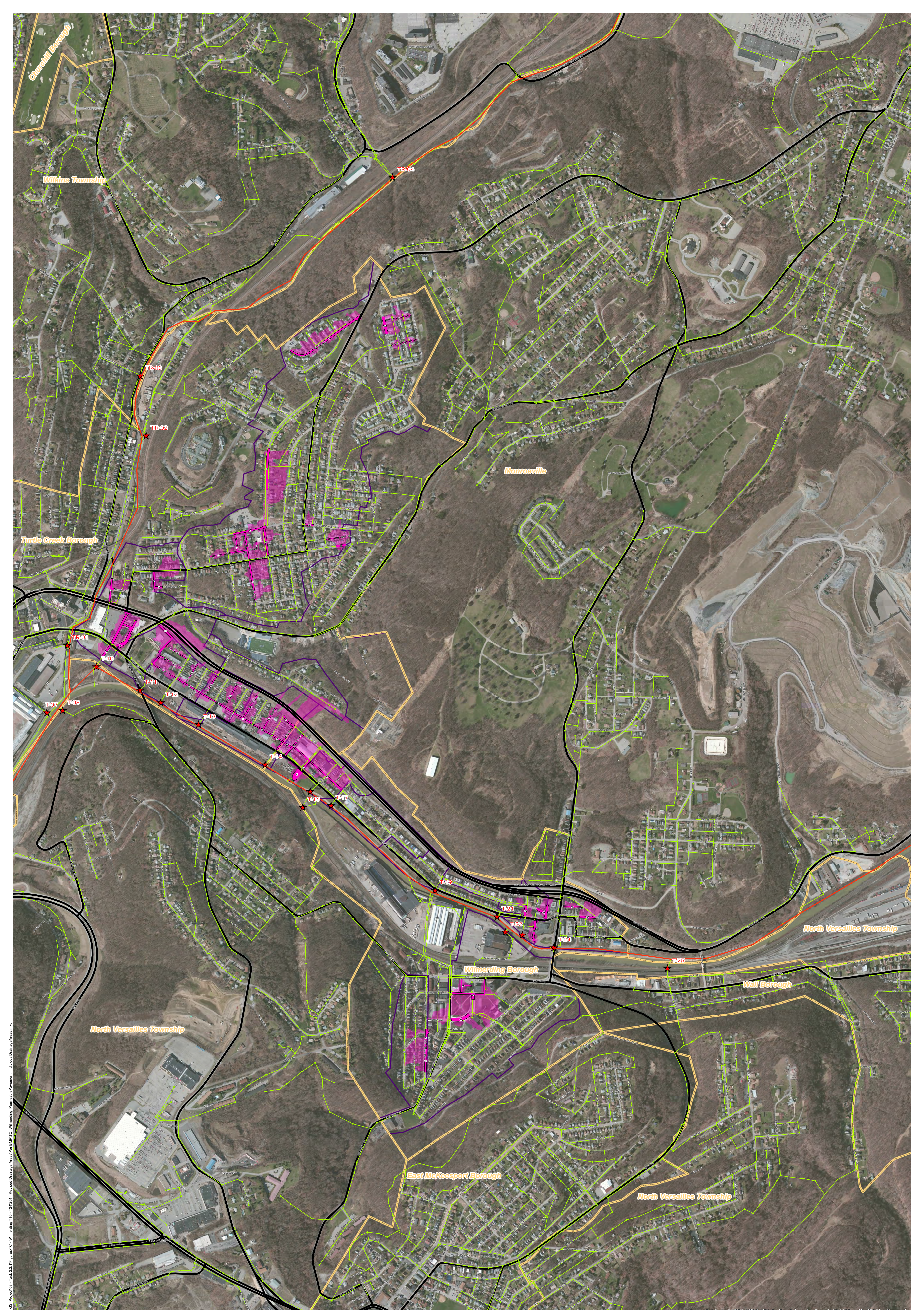
ALCOSAN POC	Model Subcatchment	Concept Municipal Project UID	BMP Type	Concept Municipal Project Area (acres)	Public ROW or Parcel		Concept Municipal Project Individual Drainage Area (acres)*	Concept Municipal Project Individual Project Impervious Drainage Area (acres)*
					Area of Municipal Project in Public ROW (acres)	Area of Municipal Project outside of Public ROW (acres)		
T-10-00	T-10D	TCUP_1	PP	0.341	0.333	0.008	2.194	1.724
T-10-00	T-10D	TCUP_2	PP	0.113	0.103	0.010	0.425	0.420
T-10-00	T-10D	TCUP_3	PP	0.176	0.176	0.000	1.139	0.582
T-10-00	T-10D	TCUP_4	PP	0.098	0.092	0.006	1.881	0.877
T-10-00	T-10C	TCUP_5	PP	0.154	0.154	0.000	1.151	0.608
T-10-00	T-10C	TCUP_6	PP	0.563	0.559	0.004	3.350	1.252
T-10-00	T-10C	TCUP_7	PP	0.065	0.002	0.063	0.830	0.257
T-10-00	T-10C	TCUP_8	PP	0.064	0.002	0.062	0.684	0.218
T-10-00	T-10C	TCUP_9	PP	0.351	0.344	0.007	2.863	0.628
T-10-00	T-10C	TCUP_10	PP	0.192	0.192	0.000	0.900	0.347
T-10-00	T-10C	TCUP_11	PP	0.076	0.075	0.001	0.949	0.364
T-10-00	T-10C	TCUP_12	PP	0.280	0.280	0.000	2.170	1.028
T-10-00	T-10C	TCUP_13	PP	0.050	0.046	0.004	0.386	0.126
T-10-00	T-10D	TCUP_14	PP	0.447	0.244	0.203	1.527	1.194
T-10-00	T-10C	TCUP_15	PP	0.045	0.045	0.000	0.221	0.092
T-10-00	T-10C	TCUP_16	PP	0.042	0.041	0.001	0.375	0.166
T-10-00	T-10C	TCUP_17	PP	0.235	0.235	0.000	3.314	1.615
T-10-00	T-10C	TCUP_18	PP	0.055	0.055	0.000	0.371	0.214
T-10-00	T-10C	TCUP_19	PP	0.077	0.077	0.000	0.351	0.177
T-10-00	T-10C	TCUP_20	PP	0.193	0.081	0.112	1.371	0.487
T-10-00	T-10C	TCUP_21	PP	0.151	0.129	0.022	0.727	0.325
T-11-00	T-11	TCUP_22	PP	0.300	0.143	0.157	3.696	1.995
T-12-00	T-12	TCUP_23	PP	0.097	0.097	0.000	0.317	0.161
T-12-00	T-12	TCUP_24	PP	0.083	0.065	0.018	0.326	0.154
T-12-00	T-12	TCUP_25	PP	0.151	0.151	0.000	0.535	0.427
T-13-00	T-13	TCUP_26	PP	0.127	0.124	0.003	1.054	0.408
T-13-00	T-13	TCUP_27	PP	0.114	0.097	0.017	0.562	0.251
T-13-00	T-12	TCUP_28	PP	0.288	0.217	0.071	1.395	0.704
T-13-00	T-13	TCUP_29	PP	0.196	0.196	0.000	2.120	1.422
T-14-00	T-14	TCUP_30	PP	0.226	0.226	0.000	4.846	1.356
T-14-00	T-14	TCUP_31	PP	0.131	0.098	0.033	1.046	0.485
T-14-00	T-14	TCUP_32	PP	0.140	0.138	0.002	0.879	0.431

ALCOSAN POC	Model Subcatchment	Concept Municipal Project UID	BMP Type	Concept Municipal Project Area (acres)	Public ROW or Parcel		Concept Municipal Project Individual Drainage Area (acres)*	Concept Municipal Project Individual Project Impervious Drainage Area (acres)*
					Area of Municipal Project in Public ROW (acres)	Area of Municipal Project outside of Public ROW (acres)		
T-14-00	T-14	TCUP_33	PP	0.118	0.117	0.001	1.505	0.850
T-14-00	T-14	TCUP_34	PP	0.097	0.094	0.003	1.599	0.866
T-14-00	T-14	TCUP_35	PP	0.052	0.040	0.012	5.582	1.591
T-15-00	T-15	WILM_36	PP	0.174	0.174	0.000	1.100	0.616
T-14-00	T-15	WILM_37	PP	0.052	0.049	0.003	0.160	0.084
T-15-00	T-15	WILM_38	PP	0.182	0.182	0.000	6.600	3.452
T-16A-00	T-16A	WILM_39	PP	0.259	0.259	0.000	3.669	1.744
T-16A-00	T-16A	WILM_40	PP	0.267	0.013	0.254	0.521	0.324
T-22-00	T-22	WILM_41	PP	0.179	0.179	0.000	1.535	0.623
T-22-00	T-22	WILM_42	PP	0.146	0.146	0.000	1.327	0.574
T-22-00	T-22	WILM_43	PP	0.339	0.327	0.012	6.277	3.707
T-22-00	T-22	WILM_44	PP	0.234	0.234	0.000	0.653	0.544
T-22-00	T-22	WILM_45	PP	0.118	0.070	0.048	0.852	0.787
T-23-00	T-23	WILM_46	PP	0.178	0.178	0.000	0.660	0.347
T-23-00	T-23	WILM_47	PP	0.099	0.099	0.000	0.587	0.383
T-23-00	T-23	WILM_48	PP	0.221	0.213	0.008	0.765	0.462
T-24-00	T-24	WILM_49	PP	0.069	0.061	0.008	0.340	0.188
T-24-00	T-24	WILM_50	PP	0.098	0.098	0.000	1.308	0.692
T-10-00	T-10C	TCUP_1001	BR	0.020	0.014	0.006	0.106	0.033
T-10-00	T-10D	TCUP_1002	BR	0.106	0.021	0.085	0.323	0.157
T-10-00	T-10D	TCUP_1003	BR	0.038	0.024	0.014	0.228	0.108
T-10-00	T-12	TCUP_1004	BR	0.073	0.030	0.043	0.254	0.143
T-10-00	T-10D	TCUP_1005	BR	0.042	0.025	0.017	1.091	0.756
T-10-00	T-10D	TCUP_1006	BR	0.032	0.004	0.028	0.054	0.007
T-10-00	T-10D	TCUP_1007	BR	0.013	0.013	0.000	0.059	0.046
T-10-00	T-10D	TCUP_1008	BR	0.011	0.010	0.001	0.049	0.030
T-10-00	T-10D	TCUP_1009	BR	0.055	0.003	0.052	0.061	0.008
T-10-00	T-10D	TCUP_1010	BR	0.060	0.020	0.040	10.989	2.730
T-10-00	T-10D	TCUP_1011	BR	0.024	0.017	0.007	0.082	0.042
T-10-00	T-10D	TCUP_1012	BR	0.040	0.000	0.040	0.044	0.011
T-10-00	T-10C	TCUP_1013	BR	0.035	0.013	0.022	0.407	0.173
T-10-00	T-10C	TCUP_1014	BR	0.099	0.018	0.081	0.834	0.317
T-10-00	T-10C	TCUP_1015	BR	0.023	0.006	0.017	0.615	0.332
T-10-00	T-10C	TCUP_1016	BR	0.033	0.033	0.000	0.480	0.170
T-10-00	T-10C	TCUP_1017	BR	0.025	0.023	0.002	0.123	0.048
T-10-00	T-10C	TCUP_1018	BR	0.043	0.000	0.043	0.049	0.000
T-10-00	T-10B	TCUP_1019	BR	0.014	0.014	0.000	0.269	0.022
T-10-00	T-12	TCUP_1020	BR	0.042	0.000	0.042	0.250	0.098

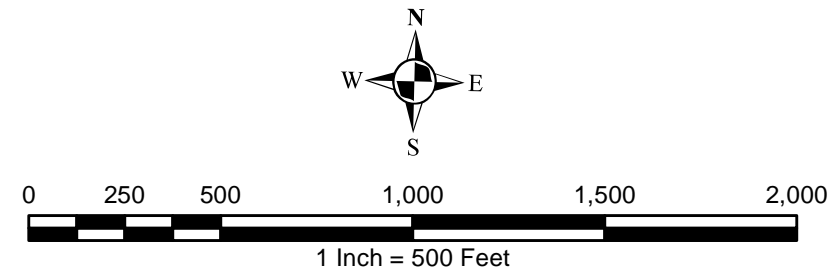
ALCOSAN POC	Model Subcatchment	Concept Municipal Project UID	BMP Type	Concept Municipal Project Area (acres)	Public ROW or Parcel		Concept Municipal Project Individual Drainage Area (acres)*	Concept Municipal Project Individual Project Impervious Drainage Area (acres)*
					Area of Municipal Project in Public ROW (acres)	Area of Municipal Project outside of Public ROW (acres)		
T-10-00	T-10C	TCUP_1021	BR	0.012	0.004	0.008	0.014	0.002
T-10-00	T-10C	TCUP_1022	BR	0.005	0.000	0.005	0.024	0.002
T-10-00	T-10D	TCUP_1023	BR	0.030	0.001	0.031	0.067	0.024
T-10-00	T-10C	TCUP_1024	BR	0.011	0.007	0.004	0.095	0.039
T-10-00	T-10D	TCUP_1025	BR	0.016	0.016	0.000	0.074	0.053
T-10-00	T-10D	TCUP_1026	BR	0.020	0.012	0.008	0.064	0.003
T-10-00	T-10C	TCUP_1027	BR	0.006	0.000	0.006	0.010	0.001
T-10-00	T-10C	TCUP_1028	BR	0.033	0.024	0.009	0.046	0.014
T-10-00	T-10C	TCUP_1029	BR	0.019	0.005	0.014	0.420	0.097
T-10-00	T-10C	TCUP_1030	BR	0.022	0.016	0.006	0.070	0.004
T-10-00	T-10C	TCUP_1031	BR	0.015	0.001	0.014	0.265	0.090
T-10-00	T-10C	TCUP_1032	BR	0.019	0.008	0.011	0.054	0.018
T-10-00	T-10C	TCUP_1033	BR	0.013	0.000	0.013	0.016	0.000
T-10-00	T-10C	TCUP_1034	BR	0.024	0.010	0.014	0.049	0.004
T-10-00	T-10C	TCUP_1035	BR	0.008	0.004	0.004	0.957	0.324
T-10-00	T-10C	TCUP_1036	BR	0.008	0.006	0.002	0.029	0.012
T-10-00	T-10C	TCUP_1037	BR	0.010	0.008	0.002	0.025	0.001
T-10-00	T-10C	TCUP_1038	BR	0.009	0.007	0.002	0.032	0.001
T-10-00	T-10C	TCUP_1039	BR	0.165	0.156	0.009	2.274	0.433
T-10-00	T-10C	TCUP_1040	BR	0.010	0.007	0.003	0.023	0.003
T-10-00	T-10C	TCUP_1041	BR	0.011	0.007	0.004	0.274	0.019
T-10-00	T-10C	TCUP_1042	BR	0.010	0.006	0.004	0.496	0.114
T-10-00	T-10C	TCUP_1043	BR	0.003	0.001	0.002	0.020	0.002
T-10-00	T-10C	TCUP_1044	BR	0.016	0.002	0.014	0.241	0.065
T-10-00	T-10C	TCUP_1045	BR	0.043	0.005	0.038	0.260	0.068
T-10-00	T-10C	TCUP_1046	BR	0.007	0.007	0.000	0.008	0.000
T-10-00	T-10C	TCUP_1047	BR	0.004	0.004	0.000	0.011	0.000
T-10-00	T-10C	TCUP_1048	BR	0.008	0.007	0.001	0.032	0.015
T-10-00	T-10D	TCUP_1049	BR	0.016	0.013	0.003	0.046	0.014
T-10-00	T-10D	TCUP_1050	BR	0.024	0.015	0.009	0.256	0.090
T-10-00	T-10C	TCUP_1051	BR	0.005	0.001	0.004	0.009	0.000
T-10-00	T-10D	TCUP_1052	BR	0.053	0.004	0.049	1.849	0.550
T-11-00	T-11	TCUP_1053	BR	0.047	0.017	0.030	0.122	0.018
T-11-00	T-11	TCUP_1054	BR	0.012	0.012	0.000	0.017	0.003
T-11-00	T-11	TCUP_1055	BR	0.012	0.000	0.012	1.879	1.127
T-11-00	T-11	TCUP_1056	BR	0.020	0.000	0.020	3.494	1.473
T-11-00	T-11	TCUP_1057	BR	0.016	0.000	0.016	0.035	0.000
T-11-00	T-11	TCUP_1058	BR	0.010	0.003	0.007	0.016	0.000

ALCOSAN POC	Model Subcatchment	Concept Municipal Project UID	BMP Type	Concept Municipal Project Area (acres)	Public ROW or Parcel		Concept Municipal Project Individual Drainage Area (acres)*	Concept Municipal Project Individual Project Impervious Drainage Area (acres)*
					Area of Municipal Project in Public ROW (acres)	Area of Municipal Project outside of Public ROW (acres)		
T-11-00	T-11	TCUP_1059	BR	0.030	0.000	0.030	0.033	0.000
T-11-00	T-11	TCUP_1060	BR	0.011	0.002	0.009	0.022	0.004
T-12-00	T-12	TCUP_1061	BR	0.033	0.011	0.022	0.039	0.004
T-12-00	T-12	TCUP_1062	BR	0.099	0.049	0.050	0.167	0.030
T-12-00	T-12	TCUP_1063	BR	0.065	0.031	0.034	0.072	0.002
T-12-00	T-12	TCUP_1064	BR	0.018	0.018	0.000	0.514	0.086
T-12-00	T-12	TCUP_1065	BR	0.006	0.003	0.003	0.109	0.029
T-12-00	T-12	TCUP_1066	BR	0.011	0.008	0.003	0.113	0.053
T-13-00	T-13	TCUP_1067	BR	0.039	0.015	0.024	1.038	0.501
T-13-00	T-13	TCUP_1068	BR	0.032	0.005	0.027	0.040	0.005
T-13-00	T-13	TCUP_1069	BR	0.021	0.021	0.000	0.458	0.227
T-13-00	T-13	TCUP_1070	BR	0.007	0.001	0.006	0.011	0.001
T-14-00	T-14	TCUP_1071	BR	0.020	0.020	0.000	0.202	0.202
T-14-00	T-14	TCUP_1072	BR	0.013	0.013	0.000	0.022	0.022
T-14-00	T-14	TCUP_1073	BR	0.008	0.000	0.008	0.926	0.352
T-14-00	T-14	TCUP_1074	BR	0.005	0.002	0.003	1.778	0.429
T-14-00	T-14	TCUP_1075	BR	0.011	0.007	0.004	0.361	0.107
T-15-00	T-15	WILM_1076	BR	0.005	0.005	0.000	0.049	0.018
T-15-00	T-16A	WILM_1077	BR	0.007	0.007	0.000	3.593	1.699
T-14-00	T-15	TCUP_1078	BR	0.004	0.002	0.002	0.163	0.111
T-16A-00	T-16A	WILM_1079	BR	0.051	0.011	0.040	0.107	0.021
T-16A-00	T-17	WILM_1080	BR	0.025	0.016	0.009	0.507	0.215
T-16A-00	T-16A	WILM_1081	BR	0.011	0.009	0.002	0.018	0.004
T-16A-00	T-16A	WILM_1082	BR	0.035	0.035	0.000	1.282	0.547
T-17-00	T-16A	WILM_1083	BR	0.039	0.014	0.025	1.357	0.569
T-17-00	T-17	WILM_1084	BR	0.065	0.065	0.000	0.076	0.006
T-22-00	T-22	WILM_1085	BR	0.041	0.000	0.041	0.283	0.283
T-22-00	T-22	WILM_1086	BR	0.059	0.000	0.059	0.377	0.017
T-22-00	T-22	WILM_1087	BR	0.048	0.048	0.000	0.114	0.068
T-22-00	T-22	WILM_1088	BR	0.013	0.009	0.004	0.039	0.009
T-22-00	T-22	WILM_1089	BR	0.015	0.015	0.000	1.128	0.703
T-22-00	T-22	WILM_1090	BR	0.009	0.007	0.002	0.012	0.006
T-22-00	T-22	WILM_1091	BR	0.066	0.025	0.041	0.138	0.138
T-22-00	T-22	WILM_1092	BR	0.007	0.006	0.001	0.332	0.098
T-22-00	T-22	WILM_1093	BR	0.023	0.023	0.000	0.074	0.025
T-22-00	T-22	WILM_1094	BR	0.017	0.015	0.002	0.041	0.008
T-22-00	T-22	WILM_1095	BR	0.013	0.005	0.008	0.034	0.014
T-22-00	T-22	WILM_1096	BR	0.048	0.035	0.013	0.053	0.004

ALCOSAN POC	Model Subcatchment	Concept Municipal Project UID	BMP Type	Concept Municipal Project Area (acres)	Public ROW or Parcel		Concept Municipal Project Individual Drainage Area (acres)*	Concept Municipal Project Individual Project Impervious Drainage Area (acres)*
					Area of Municipal Project in Public ROW (acres)	Area of Municipal Project outside of Public ROW (acres)		
T-22-00	T-22	WILM_1097	BR	0.031	0.031	0.000	0.360	0.232
T-22-00	T-22	WILM_1098	BR	0.011	0.009	0.002	0.209	0.079
T-22-00	T-21	WILM_1099	BR	0.024	0.024	0.000	0.148	0.074
T-24-00	T-24	WILM_1100	BR	0.042	0.020	0.022	0.140	0.022
T-24-00	T-24	WILM_1101	BR	0.062	0.062	0.000	0.155	0.082
T-24-00	T-24	WILM_1102	BR	0.010	0.005	0.005	0.012	0.000
T-24-00	T-24	WILM_1103	BR	0.009	0.003	0.006	0.011	0.000
T-24-00	T-24	WILM_1104	BR	0.016	0.008	0.008	0.191	0.091
T-24-00	T-24	WILM_1105	BR	0.015	0.015	0.000	0.018	0.004
T-24-00	T-24	WILM_1106	BR	0.020	0.002	0.018	0.053	0.016
T-24-00	T-24	WILM_1107	BR	0.099	0.037	0.062	0.171	0.047
T-24-00	T-24	WILM_1108	BR	0.025	0.025	0.000	0.030	0.000
T-24-00	T-24	WILM_1109	BR	0.005	0.000	0.005	0.024	0.011
T-10-00	T-10C	TCUP_2001	IB	0.093	0.041	0.052	0.630	0.164
T-10-00	T-10C	TCUP_2002	IB	0.019	0.006	0.013	1.569	0.582
T-10-00	T-10C	TCUP_2003	IB	0.019	0.005	0.014	0.020	0.001
T-10-00	T-10C	TCUP_2004	IB	0.036	0.015	0.021	0.481	0.200
T-10-00	T-10C	TCUP_2005	IB	0.029	0.017	0.012	3.686	0.896
T-10-00	T-10C	TCUP_2006	IB	0.049	0.031	0.018	0.093	0.050
T-10-00	T-10B	TCUP_2007	IB	0.025	0.015	0.010	0.101	0.043
T-10-00	T-10B	TCUP_2008	IB	0.001	0.000	0.001	0.004	0.000
T-10-00	T-10C	TCUP_2009	IB	0.014	0.004	0.010	0.110	0.046
T-22-00	T-22	WILM_2010	IB	0.032	0.032	0.000	0.127	0.072
T-12-00	T-12	TCUP_4001	VF	0.047	0.024	0.023	0.454	0.230
T-17-00	T-17	WILM_4002	VF	0.028	0.019	0.009	0.189	0.078



- ★ ALCOSAN Structures
- ALCOSAN Shallow-Cut Interceptor
- ALCOSAN Deep Tunnel Interceptor
- One Overall Manholes
- One Overall Sewerlines
- Permeable Pavement Municipal Projects
- Permeable Pavement Drainage Areas
- State Roads
- Combined Sewer Subcatchment
- Municipal Boundaries



ALCOSAN GSI Project
 Turtle Creek / Wilmerding (T-10 thru T-24)
 Concept Municipal Permeable Pavement GSI Projects
 Individual Project Drainage Areas

Path: N:\P\RD\34\34\05 - ALCOSAN GSI Project\03 - Wilmerding T10 - T24\2014 Revised\Drawings\Areas\Areas.mxd

Source: Esri, Intellicart, USA, USGS, AEX, GeoEye, AeroGRID, IGN, SVP, and the GIS User Community

**Turtle Creek-Wilmerding Concept Commercial / Institutional Permeable Pavement, Green Roof, and Special Case GSI Projects:
Summary Table**

December 23, 2013
Revised October 10, 2014

ALCOSAN POC	Model Subcatchment	Concept Comm / Inst Project UID	BMP Type	Concept Municipal Project Area (acres)	Taxable (acres)	Exempt (acres)	Provisionally Exempt (acres)	Public ROW (acres)
T-10-00	T-10C	TCUP_6001	CPP	0.379	0.379	0.000	0.000	0.000
T-10-00	T-10C	TCUP_6002	CPP	0.262	0.262	0.000	0.000	0.000
T-10-00	T-10C	TCUP_6003	CPP	0.348	0.341	0.000	0.000	0.007
T-10-00	T-10D	TCUP_6004	CPP	1.358	1.351	0.001	0.000	0.006
T-10-00	T-10D	TCUP_6005	CPP	0.255	0.000	0.067	0.010	0.178
T-10-00	T-10D	TCUP_6006	CPP	0.096	0.090	0.000	0.000	0.006
T-10-00	T-10D	TCUP_6007	CPP	0.089	0.087	0.000	0.000	0.002
T-10-00	T-10D	TCUP_6008	CPP	0.233	0.230	0.000	0.000	0.003
T-10-00	T-10D	TCUP_6009	CPP	0.147	0.147	0.000	0.000	0.000
T-10-00	T-10D	TCUP_6010	CPP	0.363	0.359	0.000	0.001	0.003
T-10-00	T-10D	TCUP_6011	CPP	0.268	0.232	0.000	0.021	0.015
T-10-00	T-10D	TCUP_6012	CPP	0.291	0.258	0.009	0.000	0.024
T-10-00	T-10D	TCUP_6013	CPP	0.283	0.000	0.242	0.000	0.041
T-10-00	T-10C	TCUP_6014	CPP	0.289	0.286	0.000	0.000	0.003
T-10-00	T-10D	TCUP_6015	CPP	0.463	0.377	0.000	0.000	0.086
T-10-00	T-10C	TCUP_6016	CPP	0.130	0.130	0.000	0.000	0.000
T-10-00	T-10D	TCUP_6017	CPP	0.191	0.081	0.110	0.000	0.000
T-11-00	T-11	TCUP_6018	CPP	0.391	0.000	0.391	0.000	0.000
T-12-00	T-12	TCUP_6019	CPP	0.071	0.060	0.000	0.000	0.011
T-12-00	T-12	TCUP_6020	CPP	0.517	0.435	0.000	0.000	0.082
T-12-00	T-12	TCUP_6021	CPP	0.098	0.086	0.000	0.000	0.012
T-13-00	T-13	TCUP_6022	CPP	0.277	0.277	0.000	0.000	0.000
T-14-00	T-14	TCUP_6023	CPP	0.119	0.119	0.000	0.000	0.000
T-14-00	T-14	TCUP_6024	CPP	0.090	0.074	0.000	0.000	0.016
T-14-00	T-14	TCUP_6025	CPP	0.188	0.113	0.000	0.000	0.075
T-14-00	T-14	TCUP_6026	CPP	0.107	0.105	0.000	0.000	0.002
T-14-00	T-14	TCUP_6027	CPP	0.106	0.098	0.000	0.000	0.008

ALCOSAN POC	Model Subcatchment	Concept Comm / Inst Project UID	BMP Type	Concept Municipal Project Area (acres)	Taxable (acres)	Exempt (acres)	Provisionally Exempt (acres)	Public ROW (acres)
T-15-00	T-15	WILM_6028	CPP	0.119	0.119	0.000	0.000	0.000
T-22-00	T-22	WILM_6029	CPP	4.033	4.033	0.000	0.000	0.000
T-22-00	T-22	WILM_6030	CPP	0.862	0.849	0.000	0.000	0.013
T-22-00	T-22	WILM_6031	CPP	0.128	0.000	0.117	0.000	0.011
T-22-00	T-22	WILM_6032	CPP	0.137	0.127	0.000	0.000	0.010
T-22-00	T-22	WILM_6033	CPP	0.136	0.136	0.000	0.000	0.000
T-22-00	T-22	WILM_6034	CPP	0.161	0.160	0.000	0.000	0.001
T-22-00	T-22	WILM_6035	CPP	0.070	0.066	0.000	0.000	0.004
T-22-00	T-22	WILM_6036	CPP	0.107	0.099	0.000	0.000	0.008
T-10-00	T-10C	TCUP_7001	GR	0.154	0.154	0.000	0.000	0.000
T-10-00	T-10D	TCUP_7002	GR	0.869	0.869	0.000	0.000	0.000
T-10-00	T-10C	TCUP_7003	GR	0.418	0.000	0.390	0.000	0.028
T-10-00	T-10D	TCUP_7004	GR	0.167	0.000	0.000	0.167	0.000
T-10-00	T-10D	TCUP_7005	GR	0.241	0.213	0.000	0.000	0.028
T-10-00	T-10D	TCUP_7006	GR	0.342	0.000	0.342	0.000	0.000
T-10-00	T-10D	TCUP_7007	GR	0.140	0.133	0.000	0.000	0.007
T-10-00	T-10D	TCUP_7008	GR	0.138	0.138	0.000	0.000	0.000
T-11-00	T-11	TCUP_7009	GR	0.953	0.000	0.951	0.000	0.002
T-12-00	T-12	TCUP_7010	GR	0.194	0.194	0.000	0.000	0.000
T-12-00	T-12	TCUP_7011	GR	0.116	0.116	0.000	0.000	0.000
T-12-00	T-12	TCUP_7012	GR	0.123	0.123	0.000	0.000	0.000
T-14-00	T-14	TCUP_7013	GR	3.092	3.091	0.000	0.001	0.000
T-15-00	T-15	WILM_7014	GR	0.251	0.223	0.000	0.000	0.028
T-16A-00	T-16A	WILM_7015	GR	0.247	0.245	0.000	0.000	0.002
T-16A-00	T-16A	WILM_7016	GR	0.118	0.118	0.000	0.000	0.000
T-17-00	T-17	WILM_7017	GR	0.213	0.213	0.000	0.000	0.000
T-17-00	T-17	WILM_7018	GR	0.192	0.192	0.000	0.000	0.000
T-17-00	T-17	WILM_7019	GR	0.196	0.195	0.000	0.000	0.001
T-17-00	T-17	WILM_7020	GR	0.122	0.120	0.000	0.000	0.002
T-19-00	T-19	WILM_7021	GR	0.217	0.215	0.000	0.000	0.002
T-22-00	T-22	WILM_7022	GR	0.275	0.000	0.061	0.000	0.214
T-22-00	T-22	WILM_7023	GR	0.125	0.000	0.125	0.000	0.000

ALCOSAN POC	Model Subcatchment	Concept Comm / Inst Project UID	BMP Type	Concept Municipal Project Area (acres)	Taxable (acres)	Exempt (acres)	Provisionally Exempt (acres)	Public ROW (acres)
T-22-00	T-22	WILM_7024	GR	0.302	0.297	0.002	0.000	0.003
T-22-00	T-22	WILM_7025	GR	1.802	1.802	0.000	0.000	0.000
T-22-00	T-22	WILM_7026	GR	0.813	0.000	0.813	0.000	0.000
T-22-00	T-22	WILM_7027	GR	0.186	0.177	0.000	0.000	0.009
T-22-00	T-22	WILM_7028	GR	0.188	0.168	0.011	0.000	0.009
T-22-00	T-22	WILM_7029	GR	0.140	0.140	0.000	0.000	0.000
T-22-00	T-22	WILM_7030	GR	0.140	0.000	0.140	0.000	0.000
T-23-00	T-23	WILM_7031	GR	0.231	0.209	0.000	0.000	0.022
T-23-00	T-23	WILM_7032	GR	0.222	0.203	0.000	0.000	0.019
T-23-00	T-23	WILM_7033	GR	0.460	0.421	0.007	0.000	0.032
T-23-00	T-23	WILM_7034	GR	0.253	0.242	0.000	0.000	0.011
T-23-00	T-23	WILM_7035	GR	0.224	0.212	0.000	0.000	0.012
T-24-00	T-24	WILM_7036	GR	0.147	0.147	0.000	0.000	0.000
T-17-00	T-17	WILM_8001	SRPP	0.249	0.000	0.000	0.000	0.249
T-15-00	T-15	WILM_8002	SRPP	0.261	0.000	0.000	0.000	0.261
T-14-00	T-14	TCUP_8003	SRPP	0.459	0.000	0.000	0.000	0.459
T-10-00	T-10C	TCUP_8004	SRPP	0.320	0.000	0.000	0.000	0.320
T-10-00	T-10D	TCUP_8005	SRPP	0.493	0.000	0.049	0.000	0.444
T-10-00	T-10D	TCUP_8006	SRPP	2.552	0.000	1.279	0.000	1.273
T-10-00	T-10D	TCUP_8007	SRPP	0.392	0.000	0.000	0.000	0.392
T-10-00	T-10D	TCUP_8008	SRPP	0.478	0.000	0.000	0.000	0.478
T-11-00	T-11	TCUP_8009	SRPP	0.285	0.000	0.262	0.000	0.023
T-10-00	T-10D	TCUP_8010	SRPP	0.214	0.000	0.000	0.000	0.214
T-12-00	T-12	TCUP_8011	SRPP	0.507	0.000	0.000	0.000	0.507
T-13-00	T-13	TCUP_8012	SRPP	0.381	0.000	0.024	0.000	0.357
T-13-00	T-13	TCUP_8013	SRPP	0.288	0.000	0.000	0.000	0.288
T-11-00	T-11	TCUP_8014	SRPP	0.334	0.000	0.000	0.000	0.334
T-16A-00	T-16A	WILM_8015	SRPP	0.318	0.000	0.000	0.000	0.318
T-24-00	T-24	WILM_8016	SRPP	0.290	0.000	0.000	0.000	0.290
T-24-00	T-24	WILM_8017	SRPP	1.034	0.102	0.000	0.000	0.932
T-24-00	T-24	WILM_8020	SRPP	0.674	0.000	0.000	0.000	0.674
T-23-00	T-23	WILM_8022	SRPP	1.018	0.000	0.000	0.000	1.018

ALCOSAN POC	Model Subcatchment	Concept Comm / Inst Project UID	BMP Type	Concept Municipal Project Area (acres)	Taxable (acres)	Exempt (acres)	Provisionally Exempt (acres)	Public ROW (acres)
T-22-00	T-22	WILM_8023	SRPP	0.463	0.000	0.000	0.000	0.463
T-22-00	T-22	WILM_8026	SRPP	0.323	0.000	0.000	0.000	0.323

