

5.8 Study Area 8 – Sto-Rox

These findings apply to ALCOSAN Points of Connection O-01, O-02, O-04, O-05A, O-05B, O-06, C-04, C-06, C-08 and C-09, which include combined sewer systems in Stowe Township, and McKees Rocks Borough.

Sto-Rox - BMP GIS Features

The SUSTAIN BMP siting tool analysis resulted in identification of a total of 7,523 BMP GIS Features covering 690 acres, which consisted of the following:

Table 5.8-1 - TOTAL SUSTAIN BMP Features Output

SUSTAIN BMP Feature Type	Number of Features	Area of BMP Features (Acres)
Permeable Pavement	1,517	152
Bioretention	2,448	282
Infiltration Basin/Trenches	448	34
Vegetated Filter Strips	762	90
Grass Swales	2,192	128
Constructed Wetlands	156	4

Locations of all identified BMP GIS features are presented on the SUSTAIN BMP Features Figure.

Sto-Rox - Concept Municipal GSI Projects

Based on the BMP features, 729 concept Municipal GSI Projects were identified covering 66 total acres with a corresponding drainage area delineation of 223 total acres and consisted of the following:

Table 5.8-2 - Summary of Identified Concept Municipal GSI Projects

Concept GSI Technology	Number of Projects	GSI Project Area (Acres)	Project Drainage Area (Acres)
Permeable Pavement	243	54	215
Bioretention	469	11	17
Infiltration Basin/Trenches	17	1	2
Vegetated Filter Strips	0	0	0
Grass Swales	0	0	0
Constructed Wetlands	0	0	0

Project statistics including ALCOSAN POC, model subcatchment, BMP type, project area, area of project inside and outside of the public right-of-way, tributary drainage area, and tributary impervious drainage area are provided in the Concept Municipal Projects Table. Locations of all identified Concept Municipal GSI projects are presented in the Concept Municipal GSI Projects Figure (1) and the corresponding delineated tributary drainage areas are presented by BMP in the Individual Project Drainage Area Figures (3).

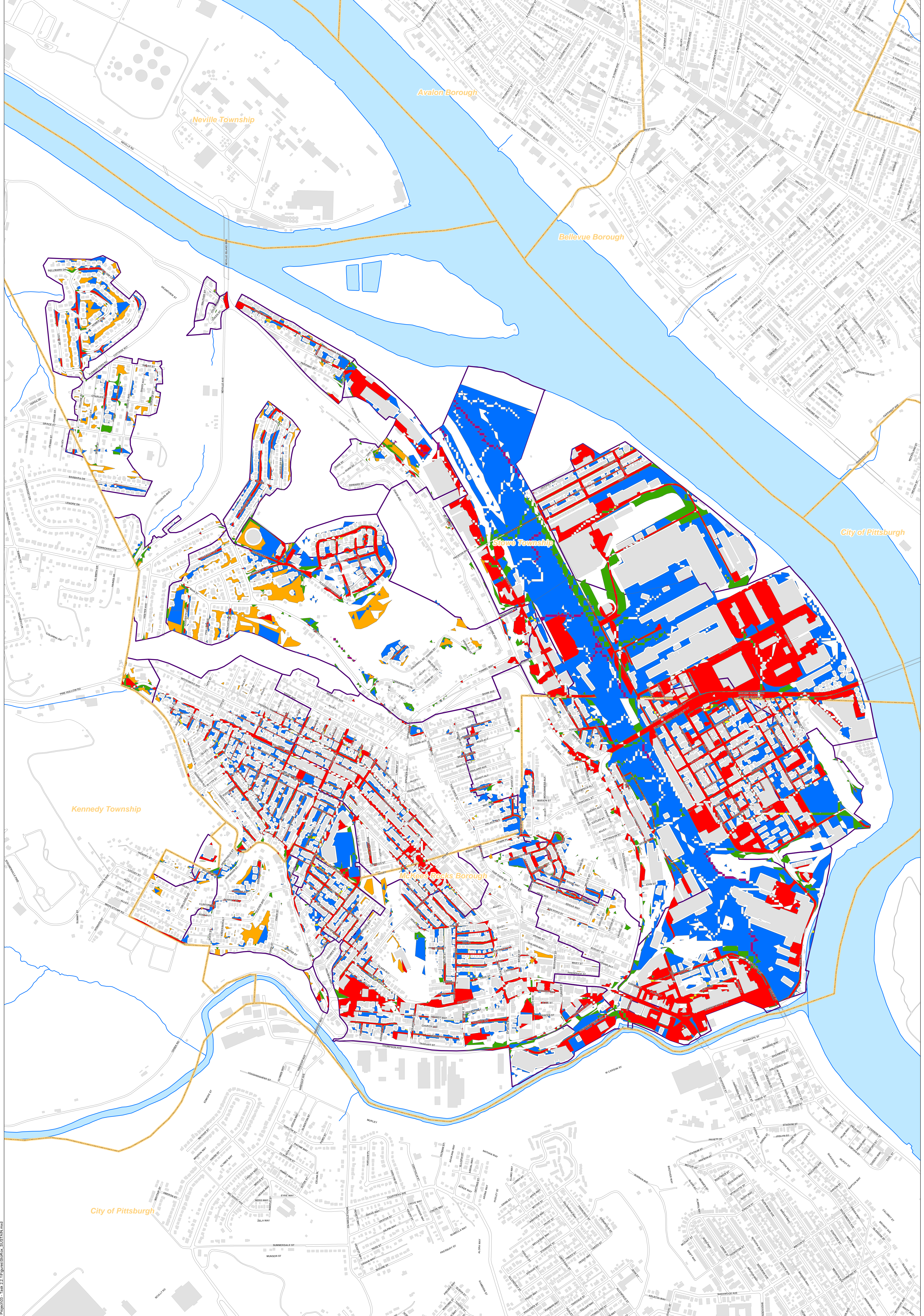
Sto-Rox - Concept Commercial/Institutional and Special Case GSI Projects

Based on the BMP features, 200 concept Commercial/Institutional and Special Case GSI Projects were identified covering 99 total acres and consisted of the following:

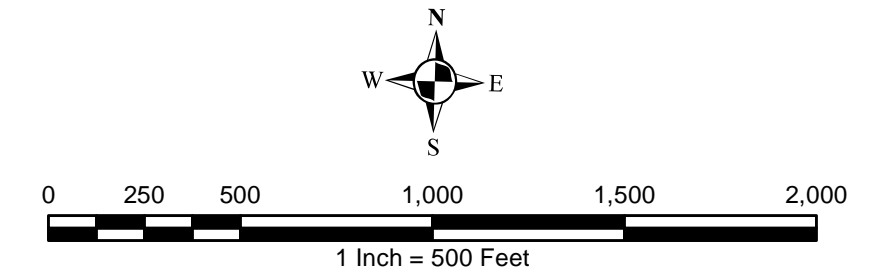
Table 5.8-3 - Summary of Identified Concept Commercial/Institutional and Special Case GSI Projects

Concept GSI Technology or Special Case Project Category	Number of Projects	GSI Project Area (Acres)
Commercial/Institutional Permeable Pavement	94	39
Commercial/Institutional Green Roofs	82	45
State Route Permeable Pavement	24	14
Busway Permeable Pavement	0	0
Busway Bioretention	0	0

Project statistics including ALCOSAN POC, model subcatchment, BMP type, project area, area of project taxable, exempt, provisionally exempt and in the public right-of-way are provided in Concept Commercial / Institutional GSI Projects Table. Locations of all identified Concept Commercial / Institutional GSI projects are presented in the Concept Commercial / Institutional GSI Projects Figure (1).



- Permeable Pavement
- Vegetated Filter Strips
- Combined Sewer Subcatchment
- Bioretention Basin
- Grass Swales
- Municipal Boundaries
- Infiltration Basin / Trench
- Constructed Wetlands



ALCOSAN GSI Project
 Sto Rox O-01 thru C-09
SUSTAIN BMP Features

Sto-Rox Concept Municipal Projects: Individual Drainage Areas
March 30, 2014
Revised October 7, 2014

*Note: The drainage area presented in this table is representative of the individual drainage area tributary to each concept municipal project without any revisions to account for overlap, without engineering judgment revisions applied, and without the drainage areas being clipped to their corresponding model subcatchments.

ALCOSAN POC	Model Subcatchment	Concept Municipal Project UID	BMP Type	Concept Municipal Project Area (acres)	Public ROW or Parcel		Concept Municipal Project Individual Drainage Area (acres)*	Concept Municipal Project Individual Project Impervious Drainage Area (acres)*
					Area of Municipal Project in Public ROW (acres)	Area of Municipal Project outside of Public ROW (acres)		
C-04-00	SUB-C-04-00-M1	MROX_1	PP	0.466	0.278	0.188	1.350	1.324
C-04-00	SUB-C-04-00-M1	MROX_2	PP	0.281	0.281	0.000	1.143	0.582
C-04-00	SUB-C-04-00-M1	MROX_3	PP	0.691	0.000	0.691	1.441	1.441
C-04-00	SUB-C-04-00-M1	MROX_4	PP	0.505	0.505	0.000	1.227	0.670
C-04-00	SUB-C-04-00-M1	MROX_5	PP	0.176	0.176	0.000	0.241	0.229
C-04-00	SUB-C-04-00-M1	MROX_6	PP	0.321	0.257	0.064	1.305	1.305
C-04-00	SUB-C-04-00-M1	MROX_7	PP	0.619	0.598	0.021	2.723	2.663
C-04-00	SUB-C-04-00-M1	MROX_8	PP	0.129	0.002	0.127	0.303	0.303
C-08-00	SUB-C-08-00-M1	MROX_29	PP	0.447	0.445	0.002	2.422	1.183
C-08-00	SUB-C-08-00-M1	MROX_30	PP	0.158	0.158	0.000	0.452	0.241
C-09-00	SUB-C09C13-321423S046	STOW_31	PP	0.155	0.146	0.009	1.664	0.519
C-09-00	SUB-C09C13-321423S046	STOW_32	PP	0.051	0.036	0.015	0.314	0.137
C-09-00	SUB-C09C13-321423S046	STOW_33	PP	0.068	0.066	0.002	0.357	0.113
C-09-00	SUB-C09C13-321423S046	STOW_34	PP	0.114	0.114	0.000	0.576	0.258
C-09-00	SUB-C09C13-321423S046	STOW_35	PP	0.107	0.087	0.020	1.022	0.384
C-09-00	SUB-C09C13-321423S046	STOW_36	PP	0.122	0.122	0.000	0.445	0.172
C-09-00	SUB-C09C13-321423S046	STOW_37	PP	0.614	0.614	0.000	4.201	1.714
C-09-00	SUB-C09C13-321423S046	MROX_38	PP	0.037	0.032	0.005	0.158	0.044
C-09-00	SUB-C09C13-320422S905	MROX_39	PP	0.017	0.016	0.001	0.037	0.016
C-09-00	SUB-C09C13-321423S046	STOW_40	PP	0.123	0.123	0.000	0.747	0.402
C-09-00	SUB-C0900-323422S005	STOW_41	PP	0.099	0.099	0.000	0.449	0.219
C-09-00	SUB-C0900-323422S005	STOW_42	PP	0.263	0.263	0.000	1.304	1.109
C-09-00	SUB-C0900-323422S005	STOW_43	PP	0.080	0.075	0.005	0.348	0.381
C-09-00	SUB-C0900-323422S005	STOW_44	PP	0.099	0.079	0.020	0.545	0.534
C-09-00	SUB-C0900-323422S005	STOW_45	PP	0.395	0.395	0.000	1.140	1.362
C-09-00	SUB-C0900-323422S005	STOW_46	PP	0.079	0.061	0.018	0.368	0.352
C-09-00	SUB-C0900-323422S005	STOW_47	PP	0.221	0.221	0.000	1.397	1.455
C-09-00	SUB-C0900-323422S005	STOW_48	PP	0.061	0.056	0.005	0.199	0.271
C-09-00	SUB-C0900-323422S005	STOW_49	PP	0.092	0.086	0.006	0.724	0.869
C-09-00	SUB-C0900-323422S005	STOW_50	PP	0.081	0.053	0.028	0.209	0.074
C-09-00	SUB-C0900-323422S005	STOW_51	PP	0.165	0.165	0.000	0.610	0.277
C-09-00	SUB-C0900-323422S005	STOW_52	PP	0.171	0.171	0.000	0.595	0.354

ALCOSAN POC	Model Subcatchment	Concept Municipal Project UID	BMP Type	Concept Municipal Project Area (acres)	Public ROW or Parcel		Concept Municipal Project Individual Drainage Area (acres)*	Concept Municipal Project Individual Project Impervious Drainage Area (acres)*
					Area of Municipal Project in Public ROW (acres)	Area of Municipal Project outside of Public ROW (acres)		
C-09-00	SUB-C0900-323422S005	STOW_53	PP	0.051	0.051	0.000	0.114	0.062
C-09-00	SUB-C0900-323422S005	STOW_54	PP	0.071	0.065	0.006	0.377	0.491
C-09-00	SUB-C0900-323422S005	STOW_55	PP	0.748	0.746	0.002	7.981	4.673
C-09-00	SUB-C0900-323422S005	STOW_56	PP	0.301	0.301	0.000	1.844	1.334
C-09-00	SUB-C0900-323422S005	STOW_57	PP	0.145	0.145	0.000	0.480	0.332
C-09-00	SUB-C0900-323422S005	STOW_58	PP	0.135	0.132	0.003	0.764	0.470
C-09-00	SUB-C0900-323422S005	STOW_59	PP	0.168	0.142	0.026	0.854	0.370
C-09-00	SUB-C0900-323422S005	STOW_60	PP	0.149	0.149	0.000	0.605	0.414
C-09-00	SUB-C0900-323422S005	MROX_61	PP	0.292	0.188	0.104	1.361	1.244
C-09-00	SUB-C0900-323422S005	STOW_62	PP	0.226	0.198	0.028	0.418	0.228
C-09-00	SUB-C0900-323422S005	MROX_63	PP	0.024	0.024	0.000	0.029	0.021
C-09-00	SUB-C0900-323422S005	STOW_64	PP	0.147	0.146	0.001	0.287	0.285
C-09-00	SUB-C0900-323422S005	MROX_65	PP	0.111	0.111	0.000	0.386	0.141
C-09-00	SUB-C0900-323422S005	STOW_66	PP	0.229	0.203	0.026	0.475	0.238
C-09-00	SUB-C0900-323422S005	STOW_67	PP	0.258	0.258	0.000	1.089	0.405
C-09-00	SUB-C0900-323422S005	STOW_68	PP	0.114	0.114	0.000	0.306	0.272
C-09-00	SUB-C0900-323422S005	STOW_69	PP	0.018	0.014	0.004	0.056	0.035
C-09-00	SUB-O0600-324424S910	STOW_70	PP	0.073	0.073	0.000	0.143	0.206
C-09-00	SUB-C0900-323422S005	STOW_71	PP	0.055	0.055	0.000	0.135	0.120
C-09-00	SUB-C09C13-320422S001	MROX_72	PP	0.055	0.055	0.000	0.151	0.074
C-09-00	SUB-C09C13-320422S905	MROX_73	PP	0.034	0.031	0.003	0.133	0.039
C-09-00	SUB-C09C13-320422S905	MROX_74	PP	0.079	0.079	0.000	0.123	0.070
C-09-00	SUB-C09C13-320422S905	MROX_75	PP	0.100	0.100	0.000	0.155	0.101
C-09-00	SUB-C09C13-320422S905	MROX_76	PP	0.066	0.066	0.000	0.095	0.060
C-09-00	SUB-C09C13-320422S905	MROX_77	PP	0.142	0.142	0.000	0.226	0.148
C-09-00	SUB-C09C13-320422S905	MROX_78	PP	0.152	0.151	0.001	0.331	0.169
C-09-00	SUB-C09C13-321421S019	MROX_79	PP	0.093	0.092	0.001	0.714	0.226
C-09-00	SUB-C09C13-321421S019	MROX_80	PP	0.212	0.212	0.000	1.230	0.519
C-09-00	SUB-C09C13-321421S019	MROX_81	PP	0.125	0.125	0.000	0.469	0.212
C-09-00	SUB-C09C13-321421S019	MROX_82	PP	0.073	0.073	0.000	0.245	0.086
C-09-00	SUB-C09C13-321421S019	MROX_83	PP	0.156	0.156	0.000	0.706	0.268
C-09-00	SUB-C09C13-321421S019	MROX_84	PP	0.340	0.340	0.000	0.953	0.520
C-09-00	SUB-C09C13-321421S019	MROX_85	PP	0.179	0.179	0.000	0.390	0.187
C-09-00	SUB-C09C13-321421S019	MROX_86	PP	0.135	0.124	0.011	0.830	0.271
C-09-00	SUB-C09C13-321421S019	MROX_87	PP	0.127	0.100	0.027	0.213	0.139
C-09-00	SUB-C09C13-321421S019	MROX_88	PP	0.097	0.097	0.000	0.181	0.112
C-09-00	SUB-C0900-323421S025	MROX_89	PP	0.108	0.108	0.000	0.286	0.156
C-09-00	SUB-C0900-323421S025	MROX_90	PP	0.043	0.042	0.001	0.190	0.060

ALCOSAN POC	Model Subcatchment	Concept Municipal Project UID	BMP Type	Concept Municipal Project Area (acres)	Public ROW or Parcel		Concept Municipal Project Individual Drainage Area (acres)*	Concept Municipal Project Individual Project Impervious Drainage Area (acres)*
					Area of Municipal Project in Public ROW (acres)	Area of Municipal Project outside of Public ROW (acres)		
C-09-00	SUB-C0900-323421S025	MROX_91	PP	0.119	0.105	0.014	0.807	0.307
C-09-00	SUB-C0900-323421S025	MROX_92	PP	0.125	0.125	0.000	0.333	0.183
C-09-00	SUB-C0900-323421S025	MROX_93	PP	0.193	0.128	0.065	2.089	1.777
C-09-00	SUB-C0900-323421S025	MROX_94	PP	0.139	0.108	0.031	0.220	0.151
C-09-00	SUB-C0900-323421S025	MROX_95	PP	0.348	0.348	0.000	1.144	0.535
C-09-00	SUB-C0900-323421S025	MROX_96	PP	0.047	0.039	0.008	0.089	0.051
C-09-00	SUB-C0900-323421S025	MROX_97	PP	0.185	0.185	0.000	0.527	0.318
C-09-00	SUB-C0900-323421S025	MROX_98	PP	0.187	0.187	0.000	0.510	0.211
C-09-00	SUB-C0900-323421S025	MROX_99	PP	0.073	0.071	0.002	0.123	0.085
C-09-00	SUB-C0900-323421S025	MROX_100	PP	0.100	0.088	0.012	0.292	0.098
C-09-00	SUB-C0900-323421S025	MROX_101	PP	0.086	0.074	0.012	0.157	0.087
C-09-00	SUB-C0900-323421S025	MROX_102	PP	0.260	0.247	0.013	0.372	0.273
C-09-00	SUB-C0900-323421S025	MROX_103	PP	0.245	0.245	0.000	0.627	0.347
C-09-00	SUB-C0900-323421S025	MROX_104	PP	0.147	0.129	0.018	0.408	0.215
C-09-00	SUB-C0900-323421S025	MROX_105	PP	0.250	0.250	0.000	0.444	0.250
C-09-00	SUB-C0900-323421S025	MROX_106	PP	0.152	0.151	0.001	0.310	0.186
C-09-00	SUB-C0900-323421S025	MROX_107	PP	0.384	0.384	0.000	1.202	0.564
C-09-00	SUB-C0900-323421S025	MROX_108	PP	0.152	0.152	0.000	0.764	0.362
C-09-00	SUB-C0900-323421S025	MROX_109	PP	0.307	0.307	0.000	1.251	0.635
C-09-00	SUB-C0900-323422S005	MROX_110	PP	0.195	0.179	0.016	1.114	0.543
C-09-00	SUB-C0900-323421S025	MROX_111	PP	0.114	0.098	0.016	0.590	0.256
C-09-00	SUB-C0900-323421S025	MROX_112	PP	0.094	0.094	0.000	0.200	0.148
C-09-00	SUB-C0900-323421S025	MROX_113	PP	0.420	0.420	0.000	3.375	1.683
C-09-00	SUB-C0900-323421S025	MROX_114	PP	0.110	0.110	0.000	0.206	0.111
C-09-00	SUB-C0900-323421S025	MROX_115	PP	0.277	0.277	0.000	1.793	0.892
C-09-00	SUB-C0900-323421S025	MROX_116	PP	0.119	0.118	0.001	0.337	0.216
C-09-00	SUB-C0900-325420S901	MROX_117	PP	0.183	0.000	0.183	0.366	0.227
C-09-00	SUB-C0900-325420S901	MROX_118	PP	0.182	0.000	0.182	0.955	0.613
C-09-00	SUB-C0900-325420S901	MROX_119	PP	0.154	0.000	0.154	0.519	0.384
C-09-00	SUB-C0900-323421S025	MROX_120	PP	0.083	0.000	0.083	0.184	0.159
C-09-00	SUB-C0900-325420S901	MROX_121	PP	0.240	0.240	0.000	0.550	0.496
C-09-00	SUB-C09C13-321423S046	STOW_122	PP	0.155	0.154	0.001	0.587	0.464
C-09-00	SUB-C09C13-321423S046	STOW_123	PP	0.163	0.161	0.002	0.494	0.439
C-09-00	SUB-C09C13-321423S046	STOW_124	PP	0.055	0.050	0.005	0.147	0.086
C-09-00	SUB-C09C13-321423S046	STOW_125	PP	0.176	0.176	0.000	0.567	0.365
C-09-00	SUB-C09C13-321423S046	STOW_126	PP	0.117	0.116	0.001	0.574	0.208
C-09-00	SUB-C09C13-321423S046	STOW_127	PP	0.270	0.270	0.000	1.177	0.503
C-09-00	SUB-C09C13-321423S046	STOW_128	PP	0.060	0.051	0.009	0.264	0.079

ALCOSAN POC	Model Subcatchment	Concept Municipal Project UID	BMP Type	Concept Municipal Project Area (acres)	Public ROW or Parcel		Concept Municipal Project Individual Drainage Area (acres)*	Concept Municipal Project Individual Project Impervious Drainage Area (acres)*
					Area of Municipal Project in Public ROW (acres)	Area of Municipal Project outside of Public ROW (acres)		
C-09-00	SUB-C09C13-321423S046	STOW_129	PP	0.075	0.071	0.004	0.410	0.127
C-09-00	SUB-C09C13-321423S046	STOW_130	PP	0.730	0.723	0.007	4.507	1.761
C-09-00	SUB-C09C13-321423S046	STOW_131	PP	0.083	0.064	0.019	0.540	0.272
C-09-00	SUB-C09C13-321423S046	STOW_132	PP	0.171	0.145	0.026	0.965	0.806
C-09-00	SUB-C09C13-321423S046	STOW_133	PP	0.439	0.439	0.000	3.179	2.566
C-09-00	SUB-C09C13-321423S046	STOW_134	PP	0.115	0.115	0.000	0.811	0.282
C-09-00	SUB-C09C13-321423S046	STOW_135	PP	0.067	0.067	0.000	0.605	0.132
C-09-00	SUB-C09C13-321423S046	STOW_136	PP	0.096	0.096	0.000	0.701	0.212
C-09-00	SUB-C09C13-321423S046	STOW_137	PP	0.268	0.268	0.000	1.322	0.540
C-09-00	SUB-C09C13-321423S046	STOW_138	PP	0.130	0.121	0.009	0.510	0.195
C-09-00	SUB-C09C13-321423S046	STOW_139	PP	0.051	0.051	0.000	0.286	0.114
C-09-00	SUB-C09C13-321423S046	STOW_140	PP	0.071	0.057	0.014	0.429	0.158
C-09-00	SUB-C09C13-321423S046	STOW_141	PP	0.070	0.070	0.000	0.394	0.121
C-09-00	SUB-C09C13-321423S046	STOW_142	PP	0.469	0.469	0.000	3.110	1.322
C-09-00	SUB-C09C13-321423S046	STOW_143	PP	0.133	0.116	0.017	0.331	0.171
C-09-00	SUB-C09C13-321423S046	STOW_144	PP	0.144	0.144	0.000	0.524	0.202
C-09-00	SUB-C09C13-321423S046	STOW_145	PP	0.122	0.081	0.041	0.554	0.238
C-09-00	SUB-C09C13-321423S046	STOW_146	PP	0.249	0.249	0.000	1.634	0.736
C-09-00	SUB-C09C13-321423S046	STOW_147	PP	0.046	0.046	0.000	0.196	0.115
C-09-00	SUB-C09C13-321423S046	STOW_148	PP	0.138	0.136	0.002	1.048	0.327
C-09-00	SUB-C09C13-321423S046	STOW_149	PP	0.042	0.042	0.000	0.321	0.122
O-01-00	O-01-00-M5	STOW_150	PP	0.182	0.182	0.000	0.478	0.198
O-01-00	O-01-00-M5	STOW_151	PP	0.088	0.088	0.000	0.162	0.089
O-01-00	O-01-00-M5	STOW_152	PP	0.243	0.243	0.000	0.810	0.323
O-01-00	O-01-00-M5	STOW_153	PP	0.345	0.345	0.000	0.737	0.351
O-01-00	O-01-00-M5	STOW_154	PP	0.143	0.143	0.000	0.190	0.147
O-01-00	O-01-00-M5	STOW_155	PP	0.281	0.281	0.000	0.721	0.614
O-01-00	O-01-00-M5	STOW_156	PP	0.231	0.231	0.000	0.627	0.514
O-01-00	O-01-00-M5	STOW_157	PP	0.208	0.208	0.000	0.492	0.433
O-01-00	O-01-00-M5	STOW_158	PP	0.101	0.096	0.005	0.215	0.168
O-01-00	O-01-00-M5	STOW_159	PP	0.049	0.049	0.000	0.085	0.087
O-01-00	O-01-00-M5	STOW_160	PP	0.018	0.018	0.000	0.030	0.032
O-01-00	O-01-00-M5	STOW_161	PP	0.045	0.045	0.000	0.069	0.096
O-01-00	O-01-00-M5	STOW_162	PP	0.138	0.138	0.000	0.227	0.125
O-01-00	O-01-00-M5	STOW_163	PP	0.105	0.105	0.000	0.229	0.193
O-02-00	O-02-00-M1	STOW_164	PP	0.603	0.582	0.021	4.443	1.715
O-02-00	O-02-00-M1	STOW_165	PP	0.066	0.066	0.000	0.088	0.067
O-02-00	O-02-00-M1	STOW_166	PP	0.256	0.256	0.000	0.786	0.330

ALCOSAN POC	Model Subcatchment	Concept Municipal Project UID	BMP Type	Concept Municipal Project Area (acres)	Public ROW or Parcel		Concept Municipal Project Individual Drainage Area (acres)*	Concept Municipal Project Individual Project Impervious Drainage Area (acres)*
					Area of Municipal Project in Public ROW (acres)	Area of Municipal Project outside of Public ROW (acres)		
O-02-00	O-02-00-M1	STOW_167	PP	0.044	0.019	0.025	0.067	0.045
O-03-00	O-03-00-M4	STOW_168	PP	0.167	0.161	0.006	0.307	0.163
O-03-00	O-03-00-M4	STOW_169	PP	0.102	0.102	0.000	0.215	0.106
O-03-00	O-03-00-M4	STOW_170	PP	0.072	0.071	0.001	0.190	0.068
O-03-00	O-03-00-M4	STOW_171	PP	0.231	0.231	0.000	0.692	0.319
O-03-00	O-03-00-M4	STOW_172	PP	0.611	0.611	0.000	1.416	0.599
O-03-00	O-03-00-M4	STOW_173	PP	0.146	0.146	0.000	0.737	0.312
O-03-00	O-03-00-M4	STOW_174	PP	0.057	0.057	0.000	0.073	0.053
O-03-00	O-03-00-M4	STOW_175	PP	0.096	0.096	0.000	0.119	0.093
O-03-00	O-03-00-M4	STOW_176	PP	0.024	0.024	0.000	0.063	0.022
O-04-00	O-04-00-M7	STOW_177	PP	0.209	0.209	0.000	0.429	0.250
O-04-00	O-04-00-M7	STOW_178	PP	0.388	0.388	0.000	1.053	0.833
O-04-00	O-04-00-M7	STOW_179	PP	0.110	0.110	0.000	0.177	0.220
O-04-00	O-04-00-M7	STOW_180	PP	0.076	0.076	0.000	0.121	0.150
O-04-00	O-04-00-M7	STOW_181	PP	0.173	0.166	0.007	0.309	0.274
O-04-00	O-04-00-M7	STOW_182	PP	0.612	0.312	0.300	2.053	1.522
O-04-00	O-04-00-M7	STOW_183	PP	0.711	0.000	0.711	2.646	1.308
O-04-00	O-04-00-M7	STOW_184	PP	0.134	0.000	0.134	0.338	0.234
O-04-00	O-04-00-M7	STOW_185	PP	0.291	0.000	0.291	0.770	0.532
O-04-00	O-04-00-M7	STOW_186	PP	0.228	0.000	0.228	0.808	0.487
O-04-00	O-04-00-M7	STOW_187	PP	0.737	0.000	0.737	1.997	1.488
O-04-00	O-04-00-M7	STOW_188	PP	0.113	0.113	0.000	0.189	0.158
O-04-00	O-04-00SAN/O-03-00STM	STOW_189	PP	0.886	0.000	0.886	3.883	2.306
O-04-00	O-04-00SAN/O-03-00STM	STOW_190	PP	0.117	0.000	0.117	0.161	0.127
O-04-00	O-04-00SAN/O-03-00STM	STOW_191	PP	0.077	0.000	0.077	0.195	0.139
O-04-00	O-04-00-M7	STOW_192	PP	0.248	0.000	0.248	1.136	0.650
O-04-00	O-04-00-M1	STOW_193	PP	0.521	0.310	0.211	2.065	3.633
O-04-00	O-04-00-M7	STOW_194	PP	0.282	0.195	0.087	0.794	1.464
O-05A-00	O-05A-00-M2	STOW_195	PP	0.245	0.216	0.029	0.353	0.284
O-05A-00	O-05B-00-M2	STOW_196	PP	0.286	0.286	0.000	0.565	0.390
O-05A-00	O-05A-00-M2	STOW_197	PP	1.159	1.132	0.027	5.232	2.992
O-05B-00	O-05B-00-M2	STOW_198	PP	0.436	0.390	0.046	1.013	0.763
O-05B-00	O-05B-00-M2	STOW_199	PP	0.182	0.182	0.000	0.461	0.291
O-05B-00	O-05B-00-M2	STOW_200	PP	1.099	1.074	0.025	4.310	2.537
O-06-00	SUB-O0600-327424S905	STOW_201	PP	3.125	2.504	0.621	13.862	21.002
O-06-00	SUB-O0600-327424S905	STOW_202	PP	0.373	0.112	0.261	1.229	2.046
O-06-00	SUB-O0600-324424S910	MROX_203	PP	0.050	0.043	0.007	0.078	0.053
O-06-00	SUB-O0600-324424S910	STOW_204	PP	0.198	0.198	0.000	0.787	0.315

ALCOSAN POC	Model Subcatchment	Concept Municipal Project UID	BMP Type	Concept Municipal Project Area (acres)	Public ROW or Parcel		Concept Municipal Project Individual Drainage Area (acres)*	Concept Municipal Project Individual Project Impervious Drainage Area (acres)*
					Area of Municipal Project in Public ROW (acres)	Area of Municipal Project outside of Public ROW (acres)		
O-06-00	SUB-O0600-324424S910	STOW_205	PP	0.016	0.012	0.004	0.035	0.040
O-06-00	SUB-O0600-324424S910	STOW_206	PP	0.070	0.065	0.005	0.149	0.126
O-06-00	SUB-O0600-324424S910	MROX_207	PP	0.171	0.171	0.000	0.175	0.139
O-06-00	SUB-O0600-324424S910	MROX_208	PP	0.172	0.157	0.015	0.629	0.216
O-06-00	SUB-O0600-324424S910	MROX_209	PP	0.283	0.281	0.002	0.835	0.508
O-06-00	SUB-O0600-324424S910	MROX_210	PP	0.118	0.118	0.000	0.337	0.163
O-06-00	SUB-O0600-324424S910	MROX_211	PP	0.395	0.395	0.000	1.646	0.773
O-06-00	SUB-O0600-324424S910	MROX_212	PP	0.171	0.155	0.016	0.546	0.188
O-06-00	SUB-O0600-324424S910	MROX_213	PP	0.320	0.221	0.099	2.984	2.011
O-06-00	SUB-O0600-324424S910	MROX_214	PP	0.197	0.197	0.000	0.770	0.496
O-06-00	SUB-O0600-324424S910	MROX_215	PP	0.038	0.027	0.011	0.216	0.072
O-06-00	SUB-O0600-324424S910	MROX_216	PP	0.240	0.239	0.001	0.827	0.375
O-06-00	SUB-O0600-324424S910	MROX_217	PP	0.064	0.064	0.000	0.098	0.064
O-06-00	SUB-O0600-324424S910	STOW_218	PP	0.411	0.292	0.119	0.460	0.879
O-06-00	SUB-O0600-324424S911	STOW_219	PP	0.840	0.777	0.063	3.474	5.979
O-06-00	SUB-O0600-324424S910	STOW_220	PP	0.487	0.487	0.000	1.544	1.341
O-06-00	SUB-O0600-324424S910	STOW_221	PP	0.100	0.100	0.000	0.115	0.081
O-06-00	SUB-O0600-324424S910	MROX_222	PP	0.494	0.486	0.008	3.313	1.928
O-06-00	SUB-O0600-324424S910	MROX_223	PP	0.325	0.325	0.000	1.539	1.054
O-06-00	SUB-O0600-324424S910	MROX_224	PP	0.097	0.084	0.013	0.368	0.188
O-06-00	SUB-O0600-324424S910	MROX_225	PP	0.324	0.324	0.000	1.289	0.833
O-06-00	SUB-O0600-324424S910	MROX_226	PP	0.115	0.108	0.007	0.427	0.236
O-06-00	SUB-O0600-324424S910	MROX_227	PP	0.089	0.086	0.003	0.364	0.222
O-06-00	SUB-O0600-324424S910	MROX_228	PP	0.082	0.082	0.000	0.400	0.200
O-06-00	SUB-O0600-324424S910	MROX_229	PP	0.204	0.204	0.000	0.617	0.580
O-06-00	SUB-O0600-324424S910	MROX_230	PP	0.415	0.415	0.000	2.315	1.583
O-06-00	SUB-O0600-324424S910	MROX_231	PP	0.106	0.096	0.010	0.271	0.142
O-06-00	SUB-O0600-324424S910	MROX_232	PP	0.070	0.065	0.005	0.392	0.123
O-06-00	SUB-O0600-324424S910	MROX_233	PP	0.094	0.093	0.001	0.360	0.187
O-06-00	SUB-O0600-324424S910	MROX_234	PP	0.169	0.169	0.000	0.517	0.437
O-06-00	SUB-O0600-324424S910	MROX_235	PP	0.342	0.229	0.113	0.682	0.428
O-06-00	SUB-O0600-327424S905	MROX_236	PP	0.367	0.329	0.038	1.123	0.496
O-06-00	SUB-O0600-324424S910	MROX_237	PP	0.558	0.558	0.000	1.188	0.856
O-06-00	SUB-O0600-324424S910	MROX_238	PP	0.068	0.068	0.000	0.201	0.095
O-06-00	SUB-O0600-324424S910	MROX_239	PP	0.273	0.266	0.007	0.737	0.458
O-06-00	SUB-O0600-327424S905	MROX_240	PP	0.149	0.141	0.008	0.504	0.325
O-06-00	SUB-O0600-324424S910	MROX_241	PP	0.315	0.315	0.000	1.048	0.628
O-06-00	SUB-O0600-324424S910	MROX_242	PP	0.116	0.112	0.004	0.603	0.331

ALCOSAN POC	Model Subcatchment	Concept Municipal Project UID	BMP Type	Concept Municipal Project Area (acres)	Public ROW or Parcel		Concept Municipal Project Individual Drainage Area (acres)*	Concept Municipal Project Individual Project Impervious Drainage Area (acres)*
					Area of Municipal Project in Public ROW (acres)	Area of Municipal Project outside of Public ROW (acres)		
O-06-00	SUB-O0600-324424S910	MROX_243	PP	0.162	0.148	0.014	0.829	0.358
O-06-00	SUB-O0600-327424S905	MROX_244	PP	0.250	0.250	0.000	0.725	0.374
O-06-00	SUB-O0600-327424S905	MROX_245	PP	0.170	0.105	0.065	0.863	0.414
O-06-00	SUB-O0600-327424S905	MROX_246	PP	0.155	0.155	0.000	0.630	0.241
O-06-00	SUB-O0600-327424S905	MROX_247	PP	0.079	0.079	0.000	0.242	0.096
O-06-00	SUB-O0600-327424S905	MROX_248	PP	0.162	0.162	0.000	0.478	0.305
O-06-00	SUB-O0600-324424S910	MROX_249	PP	0.401	0.383	0.018	2.319	1.501
O-06-00	SUB-O0600-324424S910	MROX_250	PP	0.127	0.124	0.003	0.442	0.279
O-06-00	SUB-O0600-324424S910	MROX_251	PP	0.086	0.077	0.009	0.279	0.152
O-06-00	SUB-O0600-324424S910	MROX_252	PP	0.087	0.082	0.005	0.207	0.118
O-06-00	SUB-O0600-328422S903	MROX_253	PP	0.358	0.169	0.189	1.007	0.385
O-06-00	SUB-O0600-324424S910	MROX_254	PP	0.307	0.307	0.000	0.678	0.498
O-06-00	SUB-O0600-324424S910	MROX_255	PP	0.105	0.078	0.027	0.547	0.407
O-06-00	SUB-O0600-328422S903	MROX_256	PP	0.256	0.224	0.032	1.019	0.453
O-06-00	SUB-O0600-328422S903	MROX_257	PP	0.297	0.231	0.066	1.119	0.783
O-06-00	SUB-O0600-328422S903	MROX_258	PP	0.272	0.266	0.006	0.903	0.376
O-06-00	SUB-O0600-328422S903	MROX_259	PP	0.257	0.086	0.171	0.505	0.380
O-06-00	SUB-O0600-328422S903	MROX_260	PP	0.509	0.494	0.015	2.589	0.679
O-06-00	SUB-O0600-324424S910	MROX_261	PP	0.073	0.073	0.000	0.219	0.140
O-06-00	SUB-O0600-324424S910	MROX_262	PP	0.093	0.093	0.000	0.435	0.199
O-06-00	SUB-O0600-324424S910	MROX_263	PP	0.131	0.123	0.008	0.881	0.394
C-04-00	SUB-C-04-00-M1	MROX_1001	BR	0.017	0.007	0.010	0.020	0.004
C-04-00	SUB-C-04-00-M1	MROX_1002	BR	0.012	0.001	0.011	0.014	0.000
C-06-00	SUB-C-06-00-M1	MROX_1042	BR	0.014	0.000	0.014	0.027	0.012
C-06-00	SUB-C-06-00-M1	MROX_1043	BR	0.321	0.065	0.256	0.358	0.332
C-06-00	SUB-C-06-00-M1	MROX_1044	BR	0.009	0.005	0.004	0.011	0.000
C-08-00	SUB-C-08-00-M1	MROX_1045	BR	0.007	0.007	0.000	0.007	0.002
C-08-00	SUB-C-08-00-M1	MROX_1046	BR	0.006	0.006	0.000	0.007	0.003
C-08-00	SUB-C-08-00-M1	MROX_1047	BR	0.014	0.005	0.009	0.017	0.001
C-08-00	SUB-C-08-00-M1	MROX_1048	BR	0.003	0.001	0.002	0.005	0.000
C-09-00	SUB-C09C13-321423S046	STOW_1049	BR	0.011	0.004	0.007	0.016	0.008
C-09-00	SUB-C09C13-321423S046	STOW_1050	BR	0.005	0.002	0.003	0.006	0.001
C-09-00	SUB-C09C13-321423S046	STOW_1051	BR	0.005	0.002	0.003	0.008	0.001
C-09-00	SUB-C09C13-321423S046	STOW_1052	BR	0.011	0.008	0.003	0.015	0.006
C-09-00	SUB-C09C13-321423S046	STOW_1053	BR	0.006	0.001	0.005	0.008	0.001
C-09-00	SUB-C09C13-321423S046	STOW_1054	BR	0.006	0.001	0.005	0.008	0.003
C-09-00	SUB-C09C13-321423S046	STOW_1055	BR	0.008	0.002	0.006	0.009	0.001
C-09-00	SUB-C09C13-321423S046	STOW_1056	BR	0.008	0.004	0.004	0.012	0.004

ALCOSAN POC	Model Subcatchment	Concept Municipal Project UID	BMP Type	Concept Municipal Project Area (acres)	Public ROW or Parcel		Concept Municipal Project Individual Drainage Area (acres)*	Concept Municipal Project Individual Project Impervious Drainage Area (acres)*
					Area of Municipal Project in Public ROW (acres)	Area of Municipal Project outside of Public ROW (acres)		
C-09-00	SUB-C09C13-321423S046	STOW_1057	BR	0.014	0.002	0.012	0.019	0.005
C-09-00	SUB-C09C13-321423S046	STOW_1058	BR	0.011	0.006	0.005	0.012	0.003
C-09-00	SUB-C09C13-321423S046	STOW_1059	BR	0.010	0.007	0.003	0.016	0.005
C-09-00	SUB-C09C13-321423S046	STOW_1060	BR	0.012	0.004	0.008	0.016	0.004
C-09-00	SUB-C09C13-321423S046	STOW_1061	BR	0.008	0.003	0.005	0.011	0.004
C-09-00	SUB-C09C13-321423S046	STOW_1062	BR	0.010	0.008	0.002	0.012	0.004
C-09-00	SUB-C09C13-321423S046	STOW_1063	BR	0.007	0.004	0.003	0.009	0.002
C-09-00	SUB-C09C13-321423S046	STOW_1064	BR	0.010	0.003	0.007	0.013	0.002
C-09-00	SUB-C09C13-321423S046	STOW_1065	BR	0.008	0.003	0.005	0.010	0.002
C-09-00	SUB-C09C13-321423S046	STOW_1066	BR	0.006	0.001	0.005	0.008	0.001
C-09-00	SUB-C09C13-321423S046	STOW_1067	BR	0.006	0.002	0.004	0.008	0.001
C-09-00	SUB-C09C13-321423S046	STOW_1068	BR	0.010	0.005	0.005	0.014	0.003
C-09-00	SUB-C09C13-321423S046	STOW_1069	BR	0.006	0.002	0.004	0.009	0.000
C-09-00	SUB-C09C13-321423S046	STOW_1070	BR	0.018	0.003	0.015	0.029	0.004
C-09-00	SUB-C09C13-321423S046	STOW_1071	BR	0.005	0.003	0.002	0.009	0.002
C-09-00	SUB-C09C13-321423S046	STOW_1072	BR	0.008	0.005	0.003	0.012	0.005
C-09-00	SUB-C09C13-321423S046	STOW_1073	BR	0.006	0.002	0.004	0.011	0.005
C-09-00	SUB-C09C13-321423S046	STOW_1074	BR	0.004	0.001	0.003	0.004	0.001
C-09-00	SUB-C09C13-321423S046	STOW_1075	BR	0.007	0.003	0.004	0.012	0.002
C-09-00	SUB-C09C13-321423S046	STOW_1076	BR	0.014	0.000	0.014	0.022	0.006
C-09-00	SUB-C0900-323422S005	STOW_1077	BR	0.007	0.003	0.004	0.012	0.003
C-09-00	SUB-C09C13-321423S046	STOW_1078	BR	0.014	0.004	0.010	0.019	0.004
C-09-00	SUB-C09C13-321423S046	STOW_1079	BR	0.004	0.001	0.003	0.005	0.001
C-09-00	SUB-C09C13-321423S046	STOW_1080	BR	0.006	0.002	0.004	0.007	0.001
C-09-00	SUB-C09C13-321423S046	STOW_1081	BR	0.005	0.001	0.004	0.006	0.000
C-09-00	SUB-C09C13-321423S046	STOW_1082	BR	0.012	0.003	0.009	0.016	0.004
C-09-00	SUB-C09C13-321423S046	STOW_1083	BR	0.033	0.006	0.027	0.048	0.005
C-09-00	SUB-C09C13-321423S046	STOW_1084	BR	0.019	0.012	0.007	0.020	0.003
C-09-00	SUB-C09C13-321423S046	STOW_1085	BR	0.011	0.001	0.010	0.016	0.005
C-09-00	SUB-C09C13-321423S046	STOW_1086	BR	0.018	0.008	0.010	0.028	0.009
C-09-00	SUB-C09C13-321423S046	STOW_1087	BR	0.013	0.003	0.010	0.023	0.006
C-09-00	SUB-C09C13-321423S046	STOW_1088	BR	0.005	0.001	0.004	0.006	0.002
C-09-00	SUB-C09C13-321423S046	STOW_1089	BR	0.010	0.008	0.002	0.015	0.000
C-09-00	SUB-C09C13-321423S046	STOW_1090	BR	0.008	0.007	0.001	0.014	0.000
C-09-00	SUB-C09C13-321423S046	STOW_1091	BR	0.009	0.005	0.004	0.015	0.004
C-09-00	SUB-C09C13-321423S046	STOW_1092	BR	0.005	0.001	0.004	0.007	0.001
C-09-00	SUB-C09C13-321423S046	STOW_1093	BR	0.019	0.003	0.016	0.030	0.004
C-09-00	SUB-C09C13-321423S046	STOW_1094	BR	0.009	0.003	0.006	0.012	0.001

ALCOSAN POC	Model Subcatchment	Concept Municipal Project UID	BMP Type	Concept Municipal Project Area (acres)	Public ROW or Parcel		Concept Municipal Project Individual Drainage Area (acres)*	Concept Municipal Project Individual Project Impervious Drainage Area (acres)*
					Area of Municipal Project in Public ROW (acres)	Area of Municipal Project outside of Public ROW (acres)		
C-09-00	SUB-C09C13-321423S046	STOW_1095	BR	0.004	0.001	0.003	0.006	0.002
C-09-00	SUB-C09C13-321423S046	STOW_1096	BR	0.004	0.001	0.003	0.005	0.000
C-09-00	SUB-C09C13-321423S046	STOW_1097	BR	0.010	0.003	0.007	0.017	0.004
C-09-00	SUB-C09C13-321423S046	STOW_1098	BR	0.011	0.003	0.008	0.015	0.002
C-09-00	SUB-C09C13-321423S046	STOW_1099	BR	0.005	0.004	0.001	0.007	0.003
C-09-00	SUB-C09C13-321423S046	STOW_1100	BR	0.009	0.006	0.003	0.014	0.004
C-09-00	SUB-C09C13-321423S046	STOW_1101	BR	0.005	0.002	0.003	0.008	0.001
C-09-00	SUB-C09C13-321423S046	STOW_1102	BR	0.014	0.003	0.011	0.022	0.007
C-09-00	SUB-C09C13-321423S046	STOW_1103	BR	0.005	0.000	0.005	0.010	0.003
C-09-00	SUB-C09C13-321423S046	STOW_1104	BR	0.008	0.004	0.004	0.012	0.005
C-09-00	SUB-C09C13-321423S046	STOW_1105	BR	0.029	0.014	0.015	0.043	0.011
C-09-00	SUB-C09C13-321423S046	STOW_1106	BR	0.006	0.002	0.004	0.009	0.001
C-09-00	SUB-C09C13-321423S046	STOW_1107	BR	0.010	0.008	0.002	0.018	0.007
C-09-00	SUB-C09C13-321423S046	STOW_1108	BR	0.004	0.002	0.002	0.006	0.000
C-09-00	SUB-C09C13-321423S046	STOW_1109	BR	0.024	0.007	0.017	0.042	0.011
C-09-00	SUB-C09C13-321423S046	STOW_1110	BR	0.006	0.001	0.005	0.009	0.001
C-09-00	SUB-C09C13-321423S046	STOW_1111	BR	0.039	0.010	0.029	0.062	0.006
C-09-00	SUB-C09C13-321423S046	STOW_1112	BR	0.005	0.003	0.002	0.008	0.002
C-09-00	SUB-C09C13-321423S046	STOW_1113	BR	0.009	0.003	0.006	0.013	0.005
C-09-00	SUB-C09C13-321423S046	STOW_1114	BR	0.007	0.002	0.005	0.009	0.003
C-09-00	SUB-C09C13-321423S046	STOW_1115	BR	0.010	0.002	0.008	0.018	0.003
C-09-00	SUB-C09C13-321423S046	STOW_1116	BR	0.003	0.002	0.001	0.005	0.000
C-09-00	SUB-C09C13-321423S046	STOW_1117	BR	0.010	0.003	0.007	0.016	0.002
C-09-00	SUB-C09C13-321423S046	STOW_1118	BR	0.012	0.005	0.007	0.016	0.000
C-09-00	SUB-C09C13-321423S046	STOW_1119	BR	0.006	0.002	0.004	0.010	0.000
C-09-00	SUB-C09C13-321423S046	STOW_1120	BR	0.009	0.005	0.004	0.012	0.004
C-09-00	SUB-C09C13-321423S046	STOW_1121	BR	0.013	0.010	0.003	0.020	0.008
C-09-00	SUB-C09C13-321423S046	STOW_1122	BR	0.033	0.011	0.022	0.097	0.028
C-09-00	SUB-C09C13-321423S046	STOW_1123	BR	0.016	0.002	0.014	0.028	0.005
C-09-00	SUB-C09C13-321423S046	STOW_1124	BR	0.009	0.007	0.002	0.012	0.001
C-09-00	SUB-C09C13-321423S046	STOW_1125	BR	0.004	0.002	0.002	0.005	0.000
C-09-00	SUB-C09C13-321423S046	STOW_1126	BR	0.010	0.003	0.007	0.019	0.018
C-09-00	SUB-C09C13-321423S046	STOW_1127	BR	0.036	0.005	0.031	0.064	0.012
C-09-00	SUB-C09C13-321423S046	STOW_1128	BR	0.016	0.003	0.013	0.047	0.013
C-09-00	SUB-C09C13-321423S046	STOW_1129	BR	0.032	0.007	0.025	0.053	0.009
C-09-00	SUB-C09C13-321423S046	STOW_1130	BR	0.020	0.005	0.015	0.036	0.009
C-09-00	SUB-C09C13-321423S046	STOW_1131	BR	0.009	0.006	0.003	0.011	0.002
C-09-00	SUB-C09C13-321423S046	STOW_1132	BR	0.012	0.003	0.009	0.018	0.005

ALCOSAN POC	Model Subcatchment	Concept Municipal Project UID	BMP Type	Concept Municipal Project Area (acres)	Public ROW or Parcel		Concept Municipal Project Individual Drainage Area (acres)*	Concept Municipal Project Individual Project Impervious Drainage Area (acres)*
					Area of Municipal Project in Public ROW (acres)	Area of Municipal Project outside of Public ROW (acres)		
C-09-00	SUB-C09C13-321423S046	STOW_1133	BR	0.030	0.006	0.024	0.041	0.004
C-09-00	SUB-C09C13-321423S046	STOW_1134	BR	0.017	0.004	0.013	0.025	0.001
C-09-00	SUB-C09C13-321423S046	STOW_1135	BR	0.040	0.014	0.026	0.069	0.007
C-09-00	SUB-C09C13-321423S046	MROX_1136	BR	0.023	0.020	0.003	0.033	0.015
C-09-00	SUB-C09C13-320422S905	MROX_1137	BR	0.008	0.001	0.007	0.010	0.002
C-09-00	SUB-C09C13-321423S046	STOW_1138	BR	0.049	0.014	0.035	0.056	0.009
C-09-00	SUB-C09C13-321423S046	STOW_1139	BR	0.056	0.016	0.040	0.122	0.045
C-09-00	SUB-C09C13-321423S046	STOW_1140	BR	0.050	0.012	0.038	0.080	0.011
C-09-00	SUB-C09C13-321423S046	STOW_1141	BR	0.085	0.019	0.066	0.132	0.034
C-09-00	SUB-C09C13-321423S046	MROX_1142	BR	0.014	0.008	0.006	0.019	0.004
C-09-00	SUB-C0900-323422S005	STOW_1143	BR	0.002	0.001	0.001	0.003	0.001
C-09-00	SUB-C0900-323422S005	STOW_1144	BR	0.007	0.003	0.004	0.012	0.005
C-09-00	SUB-C0900-323422S005	STOW_1145	BR	0.004	0.004	0.000	0.005	0.003
C-09-00	SUB-C0900-323422S005	STOW_1146	BR	0.008	0.003	0.005	0.011	0.005
C-09-00	SUB-C0900-323422S005	STOW_1147	BR	0.013	0.003	0.010	0.019	0.011
C-09-00	SUB-C0900-323422S005	STOW_1148	BR	0.017	0.010	0.007	0.022	0.012
C-09-00	SUB-C0900-323422S005	STOW_1149	BR	0.006	0.000	0.006	0.009	0.004
C-09-00	SUB-C0900-323422S005	STOW_1150	BR	0.007	0.004	0.003	0.010	0.007
C-09-00	SUB-C0900-323422S005	STOW_1151	BR	0.008	0.001	0.007	0.011	0.002
C-09-00	SUB-C0900-323422S005	STOW_1152	BR	0.011	0.003	0.008	0.016	0.010
C-09-00	SUB-C0900-323422S005	STOW_1153	BR	0.008	0.000	0.008	0.012	0.000
C-09-00	SUB-C0900-323422S005	STOW_1154	BR	0.022	0.013	0.009	0.031	0.033
C-09-00	SUB-C0900-323422S005	STOW_1155	BR	0.004	0.002	0.002	0.006	0.004
C-09-00	SUB-C0900-323422S005	STOW_1156	BR	0.016	0.009	0.007	0.023	0.015
C-09-00	SUB-C0900-323422S005	STOW_1157	BR	0.017	0.006	0.011	0.025	0.010
C-09-00	SUB-C0900-323422S005	STOW_1158	BR	0.044	0.035	0.009	0.061	0.016
C-09-00	SUB-C0900-323422S005	STOW_1159	BR	0.007	0.000	0.007	0.011	0.002
C-09-00	SUB-C0900-323422S005	STOW_1160	BR	0.028	0.012	0.016	0.054	0.018
C-09-00	SUB-C0900-323422S005	STOW_1161	BR	0.007	0.001	0.006	0.011	0.000
C-09-00	SUB-C0900-323422S005	STOW_1162	BR	0.004	0.002	0.002	0.006	0.001
C-09-00	SUB-C0900-323422S005	STOW_1163	BR	0.007	0.001	0.006	0.013	0.002
C-09-00	SUB-C0900-323422S005	STOW_1164	BR	0.026	0.007	0.019	0.043	0.015
C-09-00	SUB-C0900-323422S005	STOW_1165	BR	0.011	0.005	0.006	0.017	0.005
C-09-00	SUB-C0900-323422S005	STOW_1166	BR	0.008	0.005	0.003	0.012	0.005
C-09-00	SUB-C0900-323422S005	STOW_1167	BR	0.005	0.003	0.002	0.009	0.005
C-09-00	SUB-C0900-323422S005	STOW_1168	BR	0.004	0.001	0.003	0.005	0.000
C-09-00	SUB-C0900-323422S005	STOW_1169	BR	0.010	0.005	0.005	0.016	0.005
C-09-00	SUB-C0900-323422S005	STOW_1170	BR	0.020	0.002	0.018	0.029	0.007

ALCOSAN POC	Model Subcatchment	Concept Municipal Project UID	BMP Type	Concept Municipal Project Area (acres)	Public ROW or Parcel		Concept Municipal Project Individual Drainage Area (acres)*	Concept Municipal Project Individual Project Impervious Drainage Area (acres)*
					Area of Municipal Project in Public ROW (acres)	Area of Municipal Project outside of Public ROW (acres)		
C-09-00	SUB-C0900-323422S005	STOW_1171	BR	0.011	0.003	0.008	0.017	0.001
C-09-00	SUB-C0900-323422S005	MROX_1172	BR	0.017	0.002	0.015	0.019	0.003
C-09-00	SUB-C0900-323422S005	STOW_1173	BR	0.007	0.001	0.006	0.010	0.001
C-09-00	SUB-C0900-323422S005	STOW_1174	BR	0.008	0.002	0.006	0.013	0.001
C-09-00	SUB-C0900-323422S005	MROX_1175	BR	0.022	0.008	0.014	0.047	0.007
C-09-00	SUB-C0900-323422S005	MROX_1176	BR	0.014	0.005	0.009	0.020	0.002
C-09-00	SUB-C0900-323422S005	MROX_1177	BR	0.004	0.000	0.004	0.007	0.001
C-09-00	SUB-C0900-323421S025	MROX_1178	BR	0.013	0.006	0.007	0.020	0.001
C-09-00	SUB-C0900-323422S005	MROX_1179	BR	0.007	0.006	0.001	0.009	0.000
C-09-00	SUB-C0900-323422S005	MROX_1180	BR	0.015	0.013	0.002	0.020	0.002
C-09-00	SUB-C0900-323422S005	STOW_1181	BR	0.012	0.004	0.008	0.014	0.006
C-09-00	SUB-C0900-323422S005	STOW_1182	BR	0.010	0.010	0.000	0.013	0.003
C-09-00	SUB-C0900-323422S005	STOW_1183	BR	0.006	0.006	0.000	0.007	0.000
C-09-00	SUB-C0900-323422S005	STOW_1184	BR	0.014	0.010	0.004	0.017	0.004
C-09-00	SUB-C0900-323422S005	STOW_1185	BR	0.012	0.003	0.009	0.012	0.000
C-09-00	SUB-C0900-323422S005	STOW_1186	BR	0.004	0.001	0.003	0.005	0.000
C-09-00	SUB-C0900-323422S005	STOW_1187	BR	0.024	0.017	0.007	0.031	0.008
C-09-00	SUB-C0900-323422S005	STOW_1188	BR	0.006	0.003	0.003	0.007	0.002
C-09-00	SUB-C09C13-320422S999	MROX_1189	BR	0.017	0.000	0.017	0.021	0.000
C-09-00	SUB-C09C13-320422S001	MROX_1190	BR	0.008	0.003	0.005	0.009	0.000
C-09-00	SUB-C09C13-320422S001	MROX_1191	BR	0.006	0.003	0.003	0.009	0.002
C-09-00	SUB-C09C13-320422S905	MROX_1192	BR	0.010	0.003	0.007	0.012	0.002
C-09-00	SUB-C09C13-320422S905	MROX_1193	BR	0.003	0.001	0.002	0.004	0.000
C-09-00	SUB-C09C13-320422S905	MROX_1194	BR	0.003	0.003	0.000	0.003	0.000
C-09-00	SUB-C09C13-320422S905	MROX_1195	BR	0.013	0.010	0.003	0.014	0.003
C-09-00	SUB-C09C13-320422S905	MROX_1196	BR	0.008	0.005	0.003	0.010	0.002
C-09-00	SUB-C09C13-320422S905	MROX_1197	BR	0.010	0.006	0.004	0.011	0.001
C-09-00	SUB-C09C13-320422S905	MROX_1198	BR	0.027	0.005	0.022	0.039	0.009
C-09-00	SUB-C09C13-320422S905	MROX_1199	BR	0.006	0.003	0.003	0.007	0.002
C-09-00	SUB-C09C13-320422S905	MROX_1200	BR	0.009	0.002	0.007	0.010	0.000
C-09-00	SUB-C09C13-320422S905	MROX_1201	BR	0.009	0.004	0.005	0.010	0.002
C-09-00	SUB-C09C13-320422S905	MROX_1202	BR	0.007	0.003	0.004	0.007	0.001
C-09-00	SUB-C09C13-320422S905	MROX_1203	BR	0.004	0.003	0.001	0.006	0.001
C-09-00	SUB-C09C13-320422S905	MROX_1204	BR	0.010	0.003	0.007	0.011	0.002
C-09-00	SUB-C09C13-320422S905	MROX_1205	BR	0.013	0.006	0.007	0.019	0.004
C-09-00	SUB-C09C13-321421S019	MROX_1206	BR	0.037	0.019	0.018	0.063	0.019
C-09-00	SUB-C09C13-321421S019	MROX_1207	BR	0.032	0.018	0.014	0.056	0.021
C-09-00	SUB-C09C13-321421S019	MROX_1208	BR	0.024	0.001	0.023	0.045	0.011

ALCOSAN POC	Model Subcatchment	Concept Municipal Project UID	BMP Type	Concept Municipal Project Area (acres)	Public ROW or Parcel		Concept Municipal Project Individual Drainage Area (acres)*	Concept Municipal Project Individual Project Impervious Drainage Area (acres)*
					Area of Municipal Project in Public ROW (acres)	Area of Municipal Project outside of Public ROW (acres)		
C-09-00	SUB-C09C13-321421S019	MROX_1209	BR	0.011	0.008	0.003	0.019	0.007
C-09-00	SUB-C09C13-321421S019	MROX_1210	BR	0.029	0.009	0.020	0.034	0.008
C-09-00	SUB-C09C13-321421S019	MROX_1211	BR	0.019	0.009	0.010	0.028	0.007
C-09-00	SUB-C09C13-321421S019	MROX_1212	BR	0.008	0.003	0.005	0.012	0.001
C-09-00	SUB-C09C13-321421S019	MROX_1213	BR	0.075	0.033	0.042	0.111	0.025
C-09-00	SUB-C09C13-321421S019	MROX_1214	BR	0.016	0.010	0.006	0.025	0.007
C-09-00	SUB-C09C13-321421S019	MROX_1215	BR	0.013	0.006	0.007	0.021	0.003
C-09-00	SUB-C09C13-321421S019	MROX_1216	BR	0.028	0.003	0.025	0.040	0.005
C-09-00	SUB-C09C13-321421S019	MROX_1217	BR	0.010	0.001	0.009	0.013	0.001
C-09-00	SUB-C09C13-321421S019	MROX_1218	BR	0.005	0.000	0.005	0.008	0.001
C-09-00	SUB-C09C13-321421S019	MROX_1219	BR	0.006	0.003	0.003	0.007	0.002
C-09-00	SUB-C09C13-321421S019	MROX_1220	BR	0.006	0.004	0.002	0.009	0.002
C-09-00	SUB-C0900-323421S025	MROX_1221	BR	0.005	0.002	0.003	0.008	0.001
C-09-00	SUB-C0900-323421S025	MROX_1222	BR	0.009	0.005	0.004	0.011	0.002
C-09-00	SUB-C0900-323421S025	MROX_1223	BR	0.012	0.005	0.007	0.020	0.002
C-09-00	SUB-C0900-323421S025	MROX_1224	BR	0.005	0.002	0.003	0.008	0.002
C-09-00	SUB-C0900-323421S025	MROX_1225	BR	0.012	0.003	0.009	0.016	0.006
C-09-00	SUB-C0900-323421S025	MROX_1226	BR	0.016	0.008	0.008	0.037	0.013
C-09-00	SUB-C0900-323421S025	MROX_1227	BR	0.005	0.001	0.004	0.008	0.002
C-09-00	SUB-C0900-323421S025	MROX_1228	BR	0.013	0.010	0.003	0.020	0.001
C-09-00	SUB-C0900-323421S025	MROX_1229	BR	0.007	0.004	0.003	0.009	0.000
C-09-00	SUB-C0900-323421S025	MROX_1230	BR	0.004	0.001	0.003	0.007	0.001
C-09-00	SUB-C0900-323421S025	MROX_1231	BR	0.002	0.000	0.002	0.002	0.000
C-09-00	SUB-C0900-323421S025	MROX_1232	BR	0.013	0.008	0.005	0.015	0.003
C-09-00	SUB-C0900-323421S025	MROX_1233	BR	0.007	0.003	0.004	0.011	0.003
C-09-00	SUB-C0900-323421S025	MROX_1234	BR	0.004	0.001	0.003	0.008	0.001
C-09-00	SUB-C0900-323421S025	MROX_1235	BR	0.010	0.005	0.005	0.013	0.001
C-09-00	SUB-C0900-323421S025	MROX_1236	BR	0.011	0.007	0.004	0.014	0.000
C-09-00	SUB-C0900-323421S025	MROX_1237	BR	0.017	0.011	0.006	0.022	0.003
C-09-00	SUB-C0900-323421S025	MROX_1238	BR	0.010	0.003	0.007	0.012	0.002
C-09-00	SUB-C0900-323421S025	MROX_1239	BR	0.011	0.007	0.004	0.017	0.001
C-09-00	SUB-C0900-323421S025	MROX_1240	BR	0.013	0.005	0.008	0.015	0.003
C-09-00	SUB-C0900-323421S025	MROX_1241	BR	0.008	0.005	0.003	0.009	0.003
C-09-00	SUB-C0900-323421S025	MROX_1242	BR	0.005	0.004	0.001	0.005	0.001
C-09-00	SUB-C0900-323421S025	MROX_1243	BR	0.004	0.001	0.003	0.004	0.000
C-09-00	SUB-C0900-323421S025	MROX_1244	BR	0.004	0.000	0.004	0.005	0.000
C-09-00	SUB-C0900-323421S025	MROX_1245	BR	0.011	0.002	0.009	0.011	0.000
C-09-00	SUB-C0900-323421S025	MROX_1246	BR	0.010	0.000	0.010	0.013	0.002

ALCOSAN POC	Model Subcatchment	Concept Municipal Project UID	BMP Type	Concept Municipal Project Area (acres)	Public ROW or Parcel		Concept Municipal Project Individual Drainage Area (acres)*	Concept Municipal Project Individual Project Impervious Drainage Area (acres)*
					Area of Municipal Project in Public ROW (acres)	Area of Municipal Project outside of Public ROW (acres)		
C-09-00	SUB-C0900-323421S025	MROX_1247	BR	0.010	0.003	0.007	0.011	0.002
C-09-00	SUB-C0900-323421S025	MROX_1248	BR	0.021	0.016	0.005	0.028	0.007
C-09-00	SUB-C0900-323421S025	MROX_1249	BR	0.008	0.007	0.001	0.009	0.000
C-09-00	SUB-C0900-323421S025	MROX_1250	BR	0.005	0.004	0.001	0.006	0.001
C-09-00	SUB-C0900-323421S025	MROX_1251	BR	0.006	0.002	0.004	0.007	0.001
C-09-00	SUB-C0900-323421S025	MROX_1252	BR	0.032	0.031	0.001	0.033	0.007
C-09-00	SUB-C0900-323421S025	MROX_1253	BR	0.004	0.001	0.003	0.005	0.001
C-09-00	SUB-C0900-323421S025	MROX_1254	BR	0.018	0.008	0.010	0.019	0.005
C-09-00	SUB-C0900-323421S025	MROX_1255	BR	0.016	0.016	0.000	0.021	0.007
C-09-00	SUB-C0900-323421S025	MROX_1256	BR	0.009	0.002	0.007	0.011	0.001
C-09-00	SUB-C0900-323421S025	MROX_1257	BR	0.016	0.007	0.009	0.019	0.005
C-09-00	SUB-C0900-323421S025	MROX_1258	BR	0.019	0.001	0.018	0.024	0.003
C-09-00	SUB-C0900-323421S025	MROX_1259	BR	0.019	0.005	0.014	0.020	0.004
C-09-00	SUB-C0900-323421S025	MROX_1260	BR	0.030	0.004	0.026	0.034	0.004
C-09-00	SUB-C0900-323421S025	MROX_1261	BR	0.008	0.002	0.006	0.009	0.002
C-09-00	SUB-C0900-323421S025	MROX_1262	BR	0.019	0.003	0.016	0.023	0.004
C-09-00	SUB-C0900-323421S025	MROX_1263	BR	0.007	0.005	0.002	0.009	0.002
C-09-00	SUB-C0900-323421S025	MROX_1264	BR	0.032	0.020	0.012	0.036	0.012
C-09-00	SUB-C0900-323421S025	MROX_1265	BR	0.031	0.004	0.027	0.033	0.004
C-09-00	SUB-C0900-323421S025	MROX_1266	BR	0.014	0.004	0.010	0.016	0.004
C-09-00	SUB-C0900-323421S025	MROX_1267	BR	0.013	0.006	0.007	0.015	0.003
C-09-00	SUB-C0900-323421S025	MROX_1268	BR	0.160	0.044	0.116	0.176	0.030
C-09-00	SUB-C0900-325420S901	MROX_1269	BR	0.040	0.000	0.040	0.065	0.039
C-09-00	SUB-C0900-325420S901	MROX_1270	BR	0.081	0.000	0.081	0.189	0.128
C-09-00	SUB-C09C13-321423S046	STOW_1271	BR	0.031	0.013	0.018	0.047	0.017
C-09-00	SUB-C09C13-321423S046	STOW_1272	BR	0.014	0.006	0.008	0.030	0.019
C-09-00	SUB-C09C13-321423S046	STOW_1273	BR	0.039	0.016	0.023	0.080	0.043
C-09-00	SUB-C0900-323422S005	STOW_1274	BR	0.008	0.002	0.006	0.010	0.009
C-09-00	SUB-C09C13-321423S046	STOW_1275	BR	0.004	0.001	0.003	0.004	0.001
C-09-00	SUB-C09C13-321423S046	STOW_1276	BR	0.005	0.001	0.004	0.006	0.001
C-09-00	SUB-C09C13-321423S046	STOW_1277	BR	0.005	0.001	0.004	0.007	0.001
C-09-00	SUB-C09C13-321423S046	STOW_1278	BR	0.103	0.025	0.078	0.106	0.004
C-09-00	SUB-C09C13-319424S905	STOW_1279	BR	0.051	0.014	0.037	0.079	0.005
C-09-00	SUB-C09C13-321423S046	STOW_1280	BR	0.010	0.010	0.000	0.014	0.005
C-09-00	SUB-C09C13-321423S046	STOW_1281	BR	0.009	0.007	0.002	0.013	0.001
C-09-00	SUB-C09C13-321423S046	STOW_1282	BR	0.011	0.010	0.001	0.020	0.006
C-09-00	SUB-C09C13-321423S046	STOW_1283	BR	0.010	0.008	0.002	0.015	0.000
C-09-00	SUB-C09C13-321423S046	STOW_1284	BR	0.007	0.003	0.004	0.011	0.003

ALCOSAN POC	Model Subcatchment	Concept Municipal Project UID	BMP Type	Concept Municipal Project Area (acres)	Public ROW or Parcel		Concept Municipal Project Individual Drainage Area (acres)*	Concept Municipal Project Individual Project Impervious Drainage Area (acres)*
					Area of Municipal Project in Public ROW (acres)	Area of Municipal Project outside of Public ROW (acres)		
C-09-00	SUB-C09C13-321423S046	STOW_1285	BR	0.007	0.005	0.002	0.011	0.001
C-09-00	SUB-C09C13-321423S046	STOW_1286	BR	0.005	0.002	0.003	0.009	0.002
C-09-00	SUB-C09C13-320422S905	MROX_1287	BR	0.010	0.005	0.005	0.015	0.002
C-09-00	SUB-C09C13-320422S905	MROX_1288	BR	0.018	0.009	0.009	0.027	0.009
C-09-00	SUB-C0900-323422S005	STOW_1289	BR	0.025	0.015	0.010	0.040	0.014
C-09-00	SUB-C0900-323422S005	STOW_1290	BR	0.009	0.005	0.004	0.017	0.002
C-09-00	SUB-C0900-323422S005	STOW_1291	BR	0.008	0.005	0.003	0.011	0.000
C-09-00	SUB-C0900-323422S005	STOW_1292	BR	0.012	0.006	0.006	0.017	0.001
C-09-00	SUB-C0900-323421S025	MROX_1293	BR	0.030	0.021	0.009	0.046	0.000
C-09-00	SUB-C0900-323421S025	MROX_1294	BR	0.006	0.002	0.004	0.007	0.000
C-09-00	SUB-C0900-323421S025	MROX_1295	BR	0.010	0.002	0.008	0.010	0.010
C-09-00	SUB-C09C13-321423S046	STOW_1296	BR	0.042	0.027	0.015	0.046	0.011
C-09-00	SUB-C09C13-321423S046	STOW_1297	BR	0.151	0.080	0.071	0.494	0.288
C-09-00	SUB-C09C13-321423S046	STOW_1298	BR	0.053	0.021	0.032	0.156	0.030
C-09-00	SUB-C09C13-321423S046	STOW_1299	BR	0.023	0.005	0.018	0.054	0.001
C-09-00	SUB-C09C13-321423S046	STOW_1300	BR	0.028	0.009	0.019	0.044	0.006
C-09-00	SUB-C0900-323422S005	STOW_1301	BR	0.071	0.049	0.022	0.121	0.042
C-09-00	SUB-C09C13-320422S905	MROX_1302	BR	0.062	0.028	0.034	0.078	0.010
C-09-00	SUB-C0900-323421S025	MROX_1303	BR	0.027	0.017	0.010	0.058	0.007
C-09-00	SUB-C0900-323421S025	MROX_1304	BR	0.029	0.018	0.011	0.034	0.003
O-01-00	O-01-00-M5	STOW_1305	BR	0.017	0.016	0.001	0.019	0.008
O-01-00	O-01-00-M5	STOW_1306	BR	0.008	0.008	0.000	0.010	0.004
O-01-00	O-01-00-M5	STOW_1307	BR	0.015	0.015	0.000	0.015	0.004
O-01-00	O-01-00-M5	STOW_1308	BR	0.006	0.006	0.000	0.010	0.003
O-01-00	O-01-00-M5	STOW_1309	BR	0.017	0.013	0.004	0.024	0.006
O-01-00	O-01-00-M5	STOW_1310	BR	0.020	0.015	0.005	0.022	0.006
O-01-00	O-01-00-M5	STOW_1311	BR	0.014	0.012	0.002	0.019	0.005
O-01-00	O-01-00-M5	STOW_1312	BR	0.020	0.013	0.007	0.027	0.004
O-01-00	O-01-00-M5	STOW_1313	BR	0.022	0.013	0.009	0.024	0.005
O-01-00	O-01-00-M5	STOW_1314	BR	0.006	0.005	0.001	0.009	0.003
O-01-00	O-01-00-M5	STOW_1315	BR	0.008	0.008	0.000	0.009	0.003
O-01-00	O-01-00-M5	STOW_1316	BR	0.017	0.017	0.000	0.023	0.010
O-01-00	O-01-00-M5	STOW_1317	BR	0.009	0.008	0.001	0.011	0.004
O-01-00	O-01-00-M5	STOW_1318	BR	0.013	0.008	0.005	0.018	0.011
O-01-00	O-01-00-M5	STOW_1319	BR	0.009	0.007	0.002	0.016	0.006
O-01-00	O-01-00-M5	STOW_1320	BR	0.013	0.011	0.002	0.019	0.003
O-01-00	O-01-00-M5	STOW_1321	BR	0.017	0.012	0.005	0.025	0.004
O-01-00	O-01-00-M5	STOW_1322	BR	0.009	0.007	0.002	0.015	0.005

ALCOSAN POC	Model Subcatchment	Concept Municipal Project UID	BMP Type	Concept Municipal Project Area (acres)	Public ROW or Parcel		Concept Municipal Project Individual Drainage Area (acres)*	Concept Municipal Project Individual Project Impervious Drainage Area (acres)*
					Area of Municipal Project in Public ROW (acres)	Area of Municipal Project outside of Public ROW (acres)		
O-01-00	O-01-00-M5	STOW_1323	BR	0.033	0.026	0.007	0.039	0.007
O-01-00	O-01-00-M5	STOW_1324	BR	0.030	0.014	0.016	0.048	0.015
O-01-00	O-01-00-M5	STOW_1325	BR	0.015	0.015	0.000	0.020	0.004
O-01-00	O-01-00-M5	STOW_1326	BR	0.016	0.016	0.000	0.019	0.004
O-01-00	O-01-00-M5	STOW_1327	BR	0.028	0.028	0.000	0.049	0.013
O-01-00	O-01-00-M5	STOW_1328	BR	0.005	0.005	0.000	0.006	0.001
O-01-00	O-01-00-M5	STOW_1329	BR	0.013	0.013	0.000	0.015	0.004
O-01-00	O-01-00-M5	STOW_1330	BR	0.031	0.031	0.000	0.041	0.005
O-01-00	O-01-00-M5	STOW_1331	BR	0.021	0.019	0.002	0.024	0.005
O-01-00	O-01-00-M5	STOW_1332	BR	0.019	0.015	0.004	0.020	0.003
O-01-00	O-01-00-M5	STOW_1333	BR	0.015	0.015	0.000	0.020	0.012
O-01-00	O-01-00-M5	STOW_1334	BR	0.010	0.010	0.000	0.012	0.008
O-01-00	O-01-00-M5	STOW_1335	BR	0.004	0.004	0.000	0.004	0.003
O-01-00	O-01-00-M5	STOW_1336	BR	0.020	0.020	0.000	0.026	0.014
O-01-00	O-01-00-M5	STOW_1337	BR	0.016	0.016	0.000	0.020	0.005
O-01-00	O-01-00-M5	STOW_1338	BR	0.023	0.023	0.000	0.028	0.013
O-01-00	O-01-00-M5	STOW_1339	BR	0.059	0.045	0.014	0.106	0.074
O-01-00	O-01-00-M5	STOW_1340	BR	0.005	0.005	0.000	0.006	0.005
O-01-00	O-01-00-M5	STOW_1341	BR	0.006	0.006	0.000	0.008	0.002
O-01-00	O-01-00-M5	STOW_1342	BR	0.026	0.016	0.010	0.028	0.014
O-01-00	O-01-00-M5	STOW_1343	BR	0.004	0.002	0.002	0.005	0.001
O-01-00	O-01-00-M5	STOW_1344	BR	0.007	0.004	0.003	0.008	0.002
O-01-00	O-01-00-M5	STOW_1345	BR	0.006	0.006	0.000	0.008	0.003
O-01-00	O-01-00-M5	STOW_1346	BR	0.013	0.003	0.010	0.018	0.000
O-01-00	O-01-00-M5	STOW_1347	BR	0.011	0.010	0.001	0.013	0.009
O-01-00	O-01-00-M5	STOW_1348	BR	0.021	0.010	0.011	0.025	0.004
O-01-00	O-01-00-M5	STOW_1349	BR	0.014	0.006	0.008	0.017	0.007
O-01-00	O-01-00-M5	STOW_1350	BR	0.013	0.010	0.003	0.014	0.004
O-01-00	O-01-00-M5	STOW_1351	BR	0.007	0.004	0.003	0.009	0.004
O-01-00	O-01-00-M5	STOW_1352	BR	0.006	0.002	0.004	0.008	0.002
O-01-00	O-01-00-M5	STOW_1353	BR	0.012	0.012	0.000	0.019	0.015
O-01-00	O-01-00-M5	STOW_1354	BR	0.070	0.055	0.015	0.117	0.113
O-01-00	O-01-00-M5	STOW_1355	BR	0.105	0.079	0.026	0.499	0.156
O-01-00	O-01-00-M5	STOW_1356	BR	0.095	0.075	0.020	0.120	0.080
O-01-00	O-01-00-M5	STOW_1357	BR	0.153	0.086	0.067	0.459	0.251
O-02-00	O-02-00-M1	STOW_1358	BR	0.019	0.010	0.009	0.028	0.011
O-02-00	O-02-00-M1	STOW_1359	BR	0.033	0.017	0.016	0.052	0.024
O-02-00	O-02-00-M1	STOW_1360	BR	0.004	0.001	0.003	0.010	0.001

ALCOSAN POC	Model Subcatchment	Concept Municipal Project UID	BMP Type	Concept Municipal Project Area (acres)	Public ROW or Parcel		Concept Municipal Project Individual Drainage Area (acres)*	Concept Municipal Project Individual Project Impervious Drainage Area (acres)*
					Area of Municipal Project in Public ROW (acres)	Area of Municipal Project outside of Public ROW (acres)		
O-02-00	O-02-00-M1	STOW_1361	BR	0.007	0.005	0.002	0.009	0.005
O-02-00	O-02-00-M1	STOW_1362	BR	0.010	0.001	0.009	0.013	0.002
O-02-00	O-02-00-M1	STOW_1363	BR	0.010	0.003	0.007	0.015	0.007
O-02-00	O-02-00-M1	STOW_1364	BR	0.015	0.003	0.012	0.017	0.004
O-02-00	O-02-00-M1	STOW_1365	BR	0.012	0.008	0.004	0.018	0.006
O-02-00	O-02-00-M1	STOW_1366	BR	0.018	0.006	0.012	0.034	0.014
O-02-00	O-02-00-M1	STOW_1367	BR	0.014	0.006	0.008	0.016	0.003
O-02-00	O-02-00-M1	STOW_1368	BR	0.026	0.003	0.023	0.053	0.006
O-02-00	O-02-00-M1	STOW_1369	BR	0.192	0.037	0.155	0.390	0.065
O-02-00	O-02-00-M1	STOW_1370	BR	0.113	0.013	0.100	0.168	0.034
O-02-00	O-02-00-M1	STOW_1371	BR	0.085	0.037	0.048	0.163	0.035
O-03-00	O-03-00-M4	STOW_1372	BR	0.041	0.022	0.019	0.050	0.008
O-03-00	O-03-00-M4	STOW_1373	BR	0.056	0.000	0.056	0.091	0.000
O-03-00	O-03-00-M4	STOW_1374	BR	0.065	0.000	0.065	0.093	0.028
O-03-00	O-03-00-M4	STOW_1375	BR	0.005	0.005	0.000	0.007	0.003
O-03-00	O-03-00-M4	STOW_1376	BR	0.011	0.002	0.009	0.016	0.004
O-03-00	O-03-00-M4	STOW_1377	BR	0.016	0.008	0.008	0.021	0.008
O-03-00	O-03-00-M4	STOW_1378	BR	0.007	0.003	0.004	0.010	0.001
O-03-00	O-03-00-M4	STOW_1379	BR	0.011	0.003	0.008	0.013	0.004
O-03-00	O-03-00-M4	STOW_1380	BR	0.012	0.007	0.005	0.014	0.004
O-03-00	O-03-00-M4	STOW_1381	BR	0.014	0.008	0.006	0.014	0.003
O-03-00	O-03-00-M4	STOW_1382	BR	0.007	0.005	0.002	0.009	0.002
O-03-00	O-03-00-M4	STOW_1383	BR	0.012	0.009	0.003	0.013	0.004
O-03-00	O-03-00-M4	STOW_1384	BR	0.008	0.006	0.002	0.012	0.003
O-03-00	O-03-00-M4	STOW_1385	BR	0.009	0.005	0.004	0.013	0.003
O-03-00	O-03-00-M4	STOW_1386	BR	0.008	0.006	0.002	0.010	0.002
O-03-00	O-04-00SAN/O-03-00STM	STOW_1387	BR	0.244	0.000	0.244	0.362	0.034
O-03-00	O-03-00-M4	STOW_1388	BR	0.009	0.006	0.003	0.013	0.002
O-03-00	O-03-00-M4	STOW_1389	BR	0.109	0.078	0.031	0.146	0.052
O-03-00	O-03-00-M4	STOW_1390	BR	0.071	0.016	0.055	0.235	0.039
O-03-00	O-03-00-M4	STOW_1391	BR	0.103	0.076	0.027	0.116	0.026
O-03-00	O-03-00-M4	STOW_1392	BR	0.142	0.093	0.049	0.279	0.090
O-03-00	O-03-00-M4	STOW_1393	BR	0.097	0.050	0.047	0.135	0.046
O-03-00	O-03-00-M4	STOW_1394	BR	0.065	0.031	0.034	0.089	0.017
O-04-00	O-04-00-M7	STOW_1395	BR	0.084	0.045	0.039	0.159	0.014
O-04-00	O-04-00-M7	STOW_1396	BR	0.166	0.031	0.135	0.190	0.036
O-04-00	O-04-00-M7	STOW_1397	BR	0.113	0.057	0.056	0.139	0.035
O-04-00	O-04-00-M7	STOW_1398	BR	0.023	0.018	0.005	0.040	0.016

ALCOSAN POC	Model Subcatchment	Concept Municipal Project UID	BMP Type	Concept Municipal Project Area (acres)	Public ROW or Parcel		Concept Municipal Project Individual Drainage Area (acres)*	Concept Municipal Project Individual Project Impervious Drainage Area (acres)*
					Area of Municipal Project in Public ROW (acres)	Area of Municipal Project outside of Public ROW (acres)		
O-04-00	O-04-00-M7	STOW_1399	BR	0.008	0.008	0.000	0.009	0.005
O-04-00	O-04-00-M7	STOW_1400	BR	0.005	0.005	0.000	0.006	0.002
O-04-00	O-04-00-M7	STOW_1401	BR	0.013	0.012	0.001	0.014	0.007
O-04-00	O-04-00-M7	STOW_1402	BR	0.010	0.007	0.003	0.011	0.005
O-04-00	O-04-00-M7	STOW_1403	BR	0.016	0.008	0.008	0.017	0.006
O-04-00	O-04-00-M7	STOW_1404	BR	0.015	0.011	0.004	0.016	0.006
O-04-00	O-04-00-M7	STOW_1405	BR	0.012	0.007	0.005	0.014	0.010
O-04-00	O-04-00-M7	STOW_1406	BR	0.017	0.016	0.001	0.020	0.009
O-04-00	O-04-00-M7	STOW_1407	BR	0.019	0.011	0.008	0.029	0.008
O-04-00	O-04-00-M7	STOW_1408	BR	0.017	0.017	0.000	0.024	0.016
O-04-00	O-04-00-M7	STOW_1409	BR	0.076	0.057	0.019	0.105	0.066
O-04-00	O-04-00-M7	STOW_1410	BR	0.044	0.037	0.007	0.074	0.068
O-04-00	O-04-00-M7	STOW_1411	BR	0.008	0.004	0.004	0.009	0.000
O-05A-00	O-05A-00-M2	STOW_1412	BR	0.009	0.002	0.007	0.014	0.003
O-05A-00	O-05A-00-M2	STOW_1413	BR	0.008	0.004	0.004	0.011	0.004
O-05B-00	O-05A-00-M2	STOW_1414	BR	0.003	0.001	0.002	0.005	0.002
O-05B-00	O-05B-00-M2	STOW_1415	BR	0.003	0.001	0.002	0.004	0.001
O-05B-00	O-05B-00-M2	STOW_1416	BR	0.003	0.001	0.002	0.005	0.002
O-05B-00	O-05B-00-M2	STOW_1417	BR	0.010	0.002	0.008	0.016	0.009
O-05B-00	O-05B-00-M2	STOW_1418	BR	0.003	0.001	0.002	0.005	0.002
O-05B-00	O-05B-00-M2	STOW_1419	BR	0.006	0.002	0.004	0.008	0.003
O-05B-00	O-05B-00-M2	STOW_1420	BR	0.005	0.001	0.004	0.007	0.001
O-05B-00	O-05B-00-M2	STOW_1421	BR	0.004	0.002	0.002	0.007	0.002
O-05B-00	O-05B-00-M2	STOW_1422	BR	0.011	0.009	0.002	0.016	0.007
O-05B-00	O-05B-00-M2	STOW_1423	BR	0.402	0.080	0.322	0.795	0.199
O-06-00	SUB-O0600-324424S910	STOW_1424	BR	0.009	0.004	0.005	0.011	0.004
O-06-00	SUB-O0600-324424S910	STOW_1425	BR	0.004	0.000	0.004	0.005	0.000
O-06-00	SUB-O0600-324424S910	STOW_1426	BR	0.039	0.029	0.010	0.068	0.013
O-06-00	SUB-O0600-324424S910	STOW_1427	BR	0.011	0.007	0.004	0.016	0.004
O-06-00	SUB-O0600-324424S910	STOW_1428	BR	0.007	0.006	0.001	0.009	0.003
O-06-00	SUB-O0600-324424S910	MROX_1429	BR	0.005	0.002	0.003	0.007	0.000
O-06-00	SUB-O0600-324424S910	MROX_1430	BR	0.028	0.002	0.026	0.030	0.005
O-06-00	SUB-O0600-324424S910	MROX_1431	BR	0.017	0.015	0.002	0.034	0.010
O-06-00	SUB-O0600-324424S910	MROX_1432	BR	0.008	0.001	0.007	0.011	0.001
O-06-00	SUB-O0600-324424S910	MROX_1433	BR	0.025	0.000	0.025	0.029	0.028
O-06-00	SUB-O0600-324424S910	MROX_1434	BR	0.009	0.000	0.009	0.011	0.004
O-06-00	SUB-O0600-324424S910	MROX_1435	BR	0.014	0.003	0.011	0.025	0.009
O-06-00	SUB-O0600-324424S910	MROX_1436	BR	0.007	0.001	0.006	0.009	0.000

ALCOSAN POC	Model Subcatchment	Concept Municipal Project UID	BMP Type	Concept Municipal Project Area (acres)	Public ROW or Parcel		Concept Municipal Project Individual Drainage Area (acres)*	Concept Municipal Project Individual Project Impervious Drainage Area (acres)*
					Area of Municipal Project in Public ROW (acres)	Area of Municipal Project outside of Public ROW (acres)		
O-06-00	SUB-O0600-324424S910	MROX_1437	BR	0.007	0.003	0.004	0.009	0.001
O-06-00	SUB-O0600-324424S910	MROX_1438	BR	0.007	0.003	0.004	0.012	0.004
O-06-00	SUB-O0600-324424S910	MROX_1439	BR	0.006	0.000	0.006	0.009	0.001
O-06-00	SUB-O0600-324424S910	MROX_1440	BR	0.006	0.000	0.006	0.008	0.000
O-06-00	SUB-O0600-324424S910	MROX_1441	BR	0.074	0.000	0.074	0.079	0.003
O-06-00	SUB-O0600-324424S910	MROX_1442	BR	0.021	0.001	0.020	0.038	0.018
O-06-00	SUB-O0600-324424S910	MROX_1443	BR	0.017	0.005	0.012	0.030	0.014
O-06-00	SUB-O0600-324424S910	MROX_1444	BR	0.046	0.037	0.009	0.067	0.030
O-06-00	SUB-O0600-324424S910	MROX_1445	BR	0.023	0.015	0.008	0.026	0.006
O-06-00	SUB-O0600-324424S910	MROX_1446	BR	0.010	0.004	0.006	0.014	0.003
O-06-00	SUB-O0600-324424S910	MROX_1447	BR	0.006	0.001	0.005	0.007	0.001
O-06-00	SUB-O0600-324424S910	MROX_1448	BR	0.026	0.009	0.017	0.029	0.011
O-06-00	SUB-O0600-324424S910	MROX_1449	BR	0.010	0.004	0.006	0.017	0.004
O-06-00	SUB-O0600-324424S910	MROX_1450	BR	0.017	0.010	0.007	0.029	0.011
O-06-00	SUB-O0600-324424S910	MROX_1451	BR	0.008	0.004	0.004	0.011	0.003
O-06-00	SUB-O0600-324424S910	MROX_1452	BR	0.042	0.020	0.022	0.046	0.018
O-06-00	SUB-O0600-324424S910	MROX_1453	BR	0.012	0.004	0.008	0.012	0.003
O-06-00	SUB-O0600-324424S910	MROX_1454	BR	0.023	0.004	0.019	0.044	0.043
O-06-00	SUB-O0600-324424S910	MROX_1455	BR	0.015	0.006	0.009	0.018	0.002
O-06-00	SUB-O0600-324424S910	MROX_1456	BR	0.013	0.005	0.008	0.017	0.002
O-06-00	SUB-O0600-324424S910	MROX_1457	BR	0.005	0.001	0.004	0.005	0.001
O-06-00	SUB-O0600-324424S910	MROX_1458	BR	0.007	0.005	0.002	0.013	0.004
O-06-00	SUB-O0600-324424S910	MROX_1459	BR	0.026	0.013	0.013	0.037	0.008
O-06-00	SUB-O0600-324424S910	MROX_1460	BR	0.011	0.003	0.008	0.014	0.003
O-06-00	SUB-O0600-324424S910	MROX_1461	BR	0.017	0.010	0.007	0.021	0.010
O-06-00	SUB-O0600-324424S910	MROX_1462	BR	0.013	0.009	0.004	0.015	0.005
O-06-00	SUB-O0600-324424S910	MROX_1463	BR	0.033	0.019	0.014	0.049	0.018
O-06-00	SUB-O0600-324424S910	MROX_1464	BR	0.019	0.009	0.010	0.027	0.004
O-06-00	SUB-O0600-324424S910	MROX_1465	BR	0.035	0.005	0.030	0.049	0.008
O-06-00	SUB-O0600-324424S910	MROX_1466	BR	0.017	0.005	0.012	0.022	0.005
O-06-00	SUB-O0600-324424S910	MROX_1467	BR	0.014	0.007	0.007	0.022	0.008
O-06-00	SUB-O0600-324424S910	MROX_1468	BR	0.014	0.010	0.004	0.020	0.008
O-06-00	SUB-O0600-324424S910	MROX_1469	BR	0.007	0.004	0.003	0.008	0.002
O-06-00	SUB-O0600-324424S910	MROX_1470	BR	0.051	0.016	0.035	0.069	0.013
O-06-00	SUB-O0600-324424S910	MROX_1471	BR	0.019	0.010	0.009	0.025	0.005
O-06-00	SUB-O0600-324424S910	MROX_1472	BR	0.018	0.015	0.003	0.024	0.011
O-06-00	SUB-O0600-324424S910	MROX_1473	BR	0.011	0.008	0.003	0.014	0.003
O-06-00	SUB-O0600-324424S910	MROX_1474	BR	0.012	0.005	0.007	0.015	0.002

ALCOSAN POC	Model Subcatchment	Concept Municipal Project UID	BMP Type	Concept Municipal Project Area (acres)	Public ROW or Parcel		Concept Municipal Project Individual Drainage Area (acres)*	Concept Municipal Project Individual Project Impervious Drainage Area (acres)*
					Area of Municipal Project in Public ROW (acres)	Area of Municipal Project outside of Public ROW (acres)		
O-06-00	SUB-O0600-324424S910	MROX_1475	BR	0.149	0.022	0.127	0.208	0.034
O-06-00	SUB-O0600-324424S910	MROX_1476	BR	0.096	0.020	0.076	0.149	0.011
O-06-00	SUB-O0600-324424S910	MROX_1477	BR	0.009	0.004	0.005	0.016	0.002
O-06-00	SUB-O0600-324424S910	MROX_1478	BR	0.006	0.003	0.003	0.009	0.001
O-06-00	SUB-O0600-324424S910	MROX_1479	BR	0.021	0.014	0.007	0.028	0.008
O-06-00	SUB-O0600-324424S910	MROX_1480	BR	0.024	0.011	0.013	0.040	0.013
O-06-00	SUB-O0600-324424S910	MROX_1481	BR	0.022	0.005	0.017	0.032	0.006
O-06-00	SUB-O0600-324424S910	MROX_1482	BR	0.032	0.004	0.028	0.037	0.003
O-06-00	SUB-O0600-324424S910	MROX_1483	BR	0.015	0.011	0.004	0.022	0.013
O-06-00	SUB-O0600-327424S905	MROX_1484	BR	0.059	0.032	0.027	0.080	0.023
O-06-00	SUB-O0600-327424S905	MROX_1485	BR	0.014	0.008	0.006	0.022	0.004
O-06-00	SUB-O0600-327424S905	MROX_1486	BR	0.018	0.008	0.010	0.031	0.005
O-06-00	SUB-O0600-327424S905	MROX_1487	BR	0.017	0.008	0.009	0.024	0.006
O-06-00	SUB-O0600-327424S905	MROX_1488	BR	0.005	0.003	0.002	0.007	0.003
O-06-00	SUB-O0600-327424S905	MROX_1489	BR	0.006	0.003	0.003	0.009	0.002
O-06-00	SUB-O0600-327424S905	MROX_1490	BR	0.007	0.002	0.005	0.011	0.001
O-06-00	SUB-O0600-327424S905	MROX_1491	BR	0.116	0.047	0.069	0.129	0.022
O-06-00	SUB-O0600-328422S903	MROX_1492	BR	0.158	0.089	0.069	0.239	0.000
O-06-00	SUB-O0600-328422S903	MROX_1493	BR	0.012	0.006	0.006	0.017	0.004
O-06-00	SUB-O0600-328422S903	MROX_1494	BR	0.038	0.018	0.020	0.108	0.040
O-06-00	SUB-O0600-328422S903	MROX_1495	BR	0.024	0.013	0.011	0.036	0.008
O-06-00	SUB-O0600-328422S903	MROX_1496	BR	0.212	0.087	0.125	0.221	0.037
O-06-00	SUB-O0600-328422S903	MROX_1497	BR	0.016	0.001	0.015	0.023	0.022
O-06-00	SUB-O0600-328422S903	MROX_1498	BR	0.075	0.022	0.053	0.114	0.014
O-06-00	SUB-C09C13-320422S905	MROX_1499	BR	0.014	0.004	0.010	0.016	0.004
O-06-00	SUB-O0600-324424S910	STOW_1500	BR	0.011	0.004	0.007	0.016	0.016
O-06-00	SUB-O0600-324424S910	MROX_1501	BR	0.027	0.003	0.024	0.032	0.003
O-06-00	SUB-O0600-324424S910	MROX_1502	BR	0.014	0.008	0.006	0.018	0.008
O-06-00	SUB-O0600-324424S910	MROX_1503	BR	0.076	0.021	0.055	0.105	0.021
O-06-00	SUB-O0600-324424S910	MROX_1504	BR	0.038	0.014	0.024	0.057	0.009
O-06-00	SUB-O0600-324424S910	MROX_1505	BR	0.015	0.008	0.007	0.025	0.007
O-06-00	SUB-O0600-324424S910	MROX_1506	BR	0.010	0.006	0.004	0.017	0.006
O-06-00	SUB-O0600-324424S910	MROX_1507	BR	0.043	0.030	0.013	0.062	0.028
O-06-00	SUB-O0600-324424S910	MROX_1508	BR	0.025	0.006	0.019	0.032	0.005
C-09-00	SUB-C09C13-319424S905	STOW_2003	IB	0.042	0.017	0.025	0.049	0.010
C-09-00	SUB-C0900-323421S025	MROX_2004	IB	0.029	0.013	0.016	0.048	0.011
C-09-00	SUB-C0900-323421S025	MROX_2005	IB	0.017	0.007	0.010	0.018	0.001
O-01-00	O-01-00-M5	STOW_2006	IB	0.049	0.049	0.000	0.069	0.010

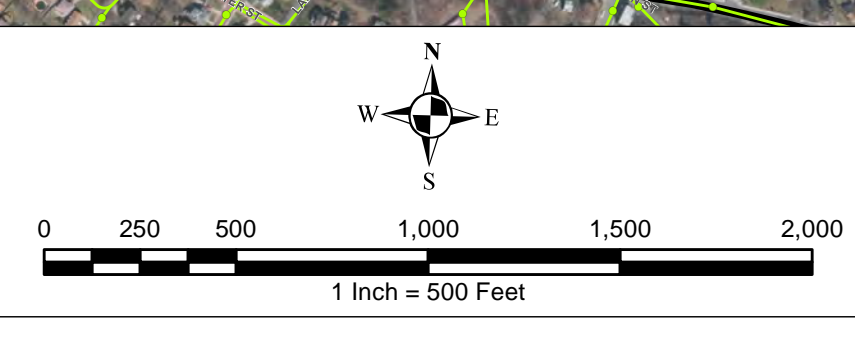
ALCOSAN POC	Model Subcatchment	Concept Municipal Project UID	BMP Type	Concept Municipal Project Area (acres)	Public ROW or Parcel		Concept Municipal Project Individual Drainage Area (acres)*	Concept Municipal Project Individual Project Impervious Drainage Area (acres)*
					Area of Municipal Project in Public ROW (acres)	Area of Municipal Project outside of Public ROW (acres)		
O-01-00	O-01-00-M5	STOW_2007	IB	0.016	0.014	0.002	0.020	0.003
O-01-00	O-01-00-M5	STOW_2008	IB	0.021	0.008	0.013	0.024	0.006
O-01-00	O-01-00-M5	STOW_2009	IB	0.024	0.018	0.006	0.027	0.007
O-01-00	O-01-00-M5	STOW_2010	IB	0.008	0.003	0.005	0.009	0.001
O-03-00	O-03-00-M4	STOW_2011	IB	0.129	0.000	0.129	0.191	0.013
O-03-00	O-03-00-M4	STOW_2012	IB	0.080	0.000	0.080	0.131	0.014
O-04-00	O-04-00SAN/O-03-00STM	STOW_2013	IB	0.205	0.038	0.167	0.353	0.084
O-04-00	O-04-00SAN/O-03-00STM	STOW_2014	IB	0.216	0.058	0.158	0.340	0.058
O-04-00	O-04-00-M7	STOW_2015	IB	0.078	0.014	0.064	0.088	0.018
O-04-00	O-04-00-M7	STOW_2016	IB	0.053	0.009	0.044	0.057	0.007
O-04-00	O-04-00-M7	STOW_2017	IB	0.039	0.022	0.017	0.059	0.009
O-04-00	O-04-00-M7	STOW_2018	IB	0.017	0.000	0.017	0.022	0.000
O-06-00	SUB-00600-324424S910	MROX_2019	IB	0.045	0.017	0.028	0.054	0.011



- ★ ALCOSAN Structures
- ALCOSAN Shallow-Cut Interceptor
- ALCOSAN Deep Tunnel Interceptor
- One Overall Manholes
- One Overall Sewerlines

- Municipal Projects**
- Infiltration Basin
 - Bioretention
 - Permeable Pavement

- Combined Sewer Subcatchment
- Municipal Boundaries
- State Roads

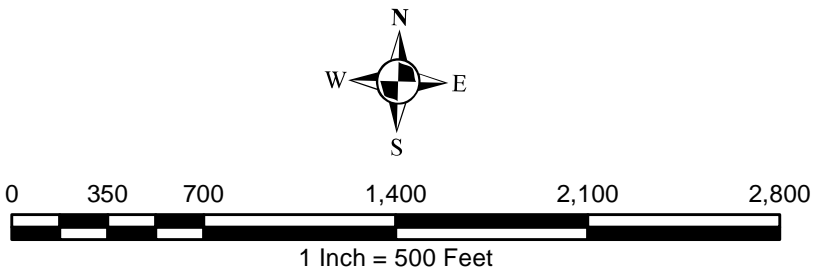


ALCOSAN GSI Project
 Sto Rox O-01 thru C-09
 Concept Municipal GSI Projects

P:\M\IN\PROJ\34\34\05 - ALCOSAN GSI Project\03 - Task 2.1\Figures\Surface_Concept\Map02.mxd



- ★ ALCOSAN Structures
- ALCOSAN Shallow-Cut Interceptor
- - - ALCOSAN Deep Tunnel Interceptor
- One Overall Manholes
- One Overall Sewerlines
- Bioretention Municipal Project
- Bioretention Drainage Area
- State Roads
- Combined Sewer Subcatchment
- Municipal Boundaries



ALCOSAN GSI Project
Sto-Rox (O-01 thru C-09)
Concept Municipal Bioretention GSI Projects
Individual Project Drainage Areas

File: I:\PROJECTS\34343\05_ALCOSAN_GSI\Project\03 - Task 2.11 Figures\Sto-Rox\01 - Bioretention_IndividualDrainageAreas.mxd
 Date: 10/14/2014 10:58:14 AM
 User: jkelly

Sto-Rox Concept Commercial / Institutional Permeable Pavement, Green Roof, and Special Case GSI Projects: Summary Table

December 23, 2013
Revised October 10, 2014

ALCOSAN POC	Model Subcatchment	Concept Comm / Inst Project UID	BMP Type	Concept Municipal Project Area (acres)	Taxable (acres)	Exempt (acres)	Provisionally Exempt (acres)	Public ROW (acres)
C-04-00	SUB-C09C13-321423S046	STOW_6001	CPP	0.190	0.000	0.190	0.000	0.000
C-04-00	SUB-C09C13-321423S046	STOW_6002	CPP	0.547	0.000	0.420	0.000	0.127
C-04-00	SUB-C09C13-321423S046	STOW_6003	CPP	0.131	0.000	0.131	0.000	0.000
C-04-00	SUB-C0900-323422S005	STOW_6004	CPP	0.096	0.000	0.095	0.000	0.001
C-04-00	SUB-C0900-323422S005	STOW_6005	CPP	0.095	0.095	0.000	0.000	0.000
C-04-00	SUB-C0900-323422S005	STOW_6006	CPP	0.102	0.102	0.000	0.000	0.000
C-04-00	SUB-C09C13-321423S046	STOW_6007	CPP	0.081	0.000	0.081	0.000	0.000
C-04-00	SUB-C0900-323422S005	STOW_6008	CPP	0.146	0.104	0.038	0.000	0.004
C-04-00	SUB-C0900-323422S005	STOW_6009	CPP	0.164	0.144	0.000	0.000	0.020
C-04-00	SUB-C0900-323422S005	MROX_6010	CPP	0.181	0.168	0.000	0.000	0.013
C-04-00	SUB-C09C13-320422S999	MROX_6011	CPP	0.228	0.000	0.228	0.000	0.000
C-04-00	SUB-C0900-323421S025	MROX_6012	CPP	0.227	0.211	0.000	0.000	0.016
C-04-00	SUB-C0900-323421S025	MROX_6013	CPP	0.897	0.897	0.000	0.000	0.000
C-04-00	SUB-C0900-323421S025	MROX_6014	CPP	0.068	0.068	0.000	0.000	0.000
C-04-00	SUB-C0900-323421S025	MROX_6015	CPP	0.112	0.111	0.000	0.000	0.001
C-04-00	SUB-C0900-323421S025	MROX_6016	CPP	0.399	0.399	0.000	0.000	0.000
C-04-00	SUB-C0900-323421S025	MROX_6017	CPP	0.179	0.176	0.000	0.000	0.003
C-04-00	SUB-C0900-323421S025	MROX_6018	CPP	0.371	0.371	0.000	0.000	0.000
C-04-00	SUB-C0900-323421S025	MROX_6019	CPP	0.502	0.502	0.000	0.000	0.000
C-04-00	SUB-C0900-323421S025	MROX_6020	CPP	0.120	0.000	0.119	0.000	0.001
C-04-00	SUB-C-04-00-M1	MROX_6021	CPP	0.633	0.475	0.000	0.000	0.158
C-04-00	SUB-C-04-00-M1	MROX_6022	CPP	0.078	0.075	0.000	0.000	0.003
C-04-00	SUB-C-04-00-M1	MROX_6023	CPP	0.122	0.000	0.121	0.000	0.001
C-04-00	SUB-C-04-00-M1	MROX_6024	CPP	0.240	0.240	0.000	0.000	0.000
C-04-00	SUB-C-04-00-M1	MROX_6025	CPP	0.671	0.669	0.000	0.000	0.002

ALCOSAN POC	Model Subcatchment	Concept Comm / Inst Project UID	BMP Type	Concept Municipal Project Area (acres)	Taxable (acres)	Exempt (acres)	Provisionally Exempt (acres)	Public ROW (acres)
C-04-00	SUB-C-04-00-M1	MROX_6026	CPP	0.083	0.083	0.000	0.000	0.000
C-04-00	SUB-C-04-00-M1	MROX_6027	CPP	0.050	0.050	0.000	0.000	0.000
C-04-00	SUB-C-04-00-M1	MROX_6028	CPP	0.894	0.894	0.000	0.000	0.000
C-04-00	SUB-C-04-00-M1	MROX_6029	CPP	0.542	0.541	0.000	0.000	0.001
C-04-00	SUB-C-04-00-M1	MROX_6030	CPP	1.242	1.236	0.000	0.000	0.006
C-06-00	SUB-C-06-00-M1	MROX_6031	CPP	0.147	0.143	0.000	0.000	0.004
C-06-00	SUB-C-06-00-M1	MROX_6032	CPP	0.398	0.000	0.398	0.000	0.000
C-06-00	SUB-C-06-00-M1	MROX_6033	CPP	1.018	0.990	0.006	0.000	0.022
C-08-00	SUB-C-08-00-M1	MROX_6034	CPP	0.085	0.082	0.000	0.000	0.003
C-08-00	SUB-C-08-00-M1	MROX_6035	CPP	0.282	0.000	0.272	0.000	0.010
C-09-00	SUB-C0900-323421S025	MROX_6036	CPP	0.754	0.714	0.040	0.000	0.000
C-09-00	SUB-C0900-323421S025	MROX_6037	CPP	0.184	0.038	0.146	0.000	0.000
C-09-00	SUB-C0900-325420S901	MROX_6038	CPP	0.076	0.010	0.065	0.000	0.001
C-09-00	SUB-C0900-323421S025	MROX_6039	CPP	0.046	0.046	0.000	0.000	0.000
C-09-00	SUB-C0900-323421S025	MROX_6040	CPP	0.072	0.072	0.000	0.000	0.000
C-09-00	SUB-C0900-323421S025	MROX_6041	CPP	0.072	0.072	0.000	0.000	0.000
C-09-00	SUB-C0900-323421S025	MROX_6042	CPP	0.128	0.080	0.000	0.000	0.048
C-09-00	SUB-C0900-325420S901	MROX_6043	CPP	0.171	0.171	0.000	0.000	0.000
C-09-00	SUB-C0900-325420S901	MROX_6044	CPP	0.852	0.852	0.000	0.000	0.000
C-09-00	SUB-C0900-325420S901	MROX_6045	CPP	0.059	0.000	0.049	0.000	0.010
C-09-00	SUB-C0900-325420S901	MROX_6046	CPP	0.048	0.047	0.000	0.000	0.001
O-03-00	O-03-00-M4	STOW_6047	CPP	0.433	0.433	0.000	0.000	0.000
O-03-00	O-03-00-M4	STOW_6048	CPP	2.029	1.961	0.000	0.062	0.006
O-03-00	O-03-00-M4	STOW_6049	CPP	0.906	0.906	0.000	0.000	0.000
O-04-00	O-04-00-M7	STOW_6050	CPP	0.340	0.340	0.000	0.000	0.000
O-04-00	O-04-00SAN/O-03-00STM	STOW_6051	CPP	0.350	0.000	0.350	0.000	0.000
O-04-00	O-04-00-M7	STOW_6052	CPP	0.108	0.000	0.108	0.000	0.000
O-04-00	O-04-00SAN/O-03-00STM	STOW_6053	CPP	0.072	0.000	0.071	0.000	0.001
O-04-00	O-04-00-M1	STOW_6054	CPP	0.311	0.311	0.000	0.000	0.000
O-04-00	O-04-00-M1	STOW_6055	CPP	0.853	0.720	0.000	0.000	0.133

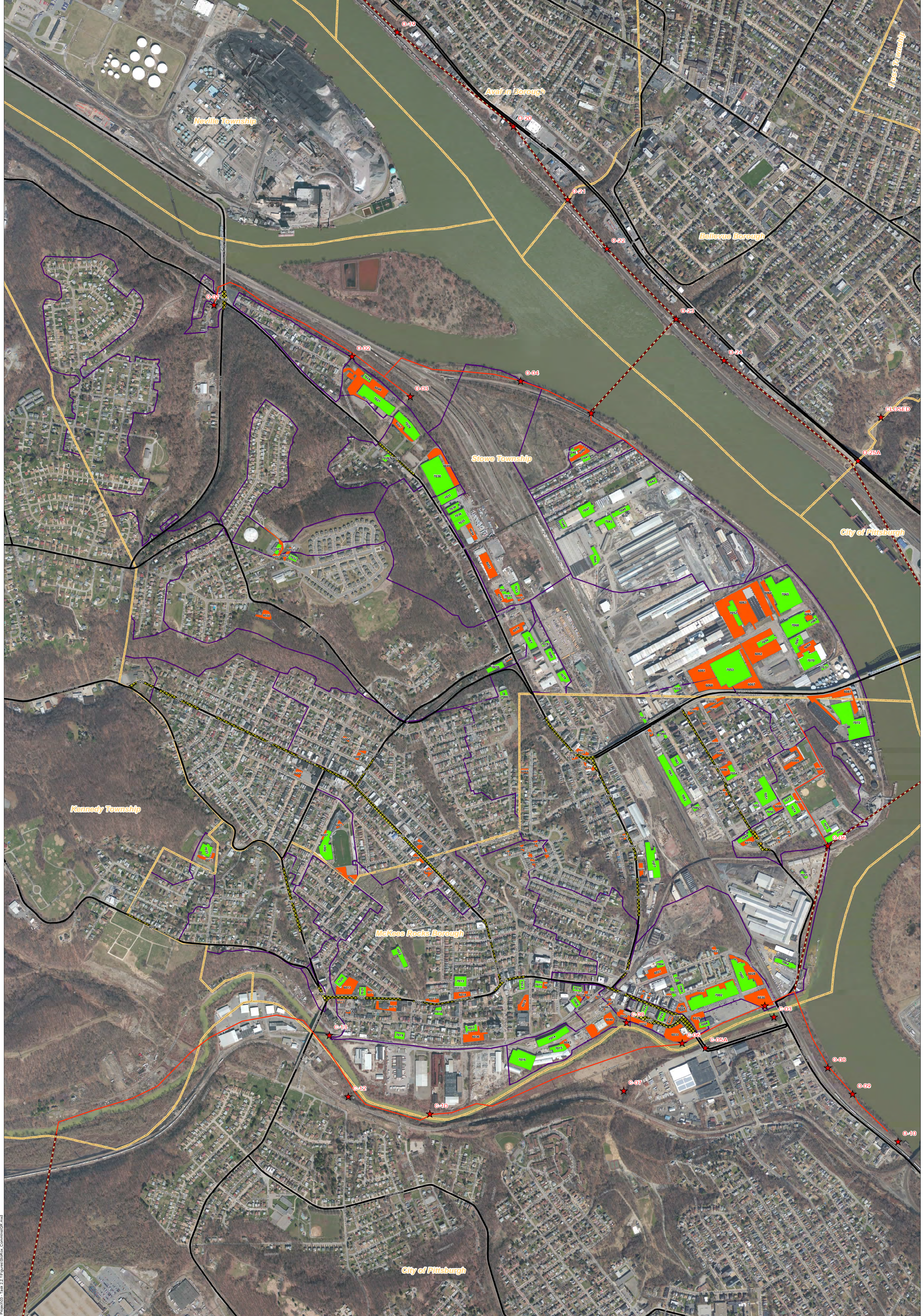
ALCOSAN POC	Model Subcatchment	Concept Comm / Inst Project UID	BMP Type	Concept Municipal Project Area (acres)	Taxable (acres)	Exempt (acres)	Provisionally Exempt (acres)	Public ROW (acres)
O-04-00	O-04-00-M1	STOW_6056	CPP	0.358	0.343	0.000	0.000	0.015
O-04-00	O-04-00-M1	STOW_6057	CPP	0.142	0.120	0.000	0.000	0.022
O-04-00	O-04-00-M7	STOW_6058	CPP	0.096	0.091	0.000	0.000	0.005
O-04-00	O-04-00-M7	STOW_6059	CPP	0.424	0.373	0.000	0.000	0.051
O-05A-00	O-05A-00-M2	STOW_6060	CPP	0.529	0.498	0.031	0.000	0.000
O-06-00	SUB-O0600-327424S905	STOW_6061	CPP	1.913	1.913	0.000	0.000	0.000
O-06-00	SUB-O0600-327424S905	STOW_6062	CPP	2.588	2.588	0.000	0.000	0.000
O-06-00	SUB-O0600-327424S905	STOW_6063	CPP	4.874	4.866	0.000	0.000	0.008
O-06-00	SUB-O0600-327424S905	STOW_6064	CPP	0.531	0.528	0.000	0.000	0.003
O-06-00	SUB-O0600-327424S905	STOW_6065	CPP	0.224	0.224	0.000	0.000	0.000
O-06-00	SUB-O0600-327424S905	STOW_6066	CPP	0.623	0.523	0.000	0.000	0.100
O-06-00	SUB-O0600-327424S905	STOW_6067	CPP	1.322	1.322	0.000	0.000	0.000
O-06-00	SUB-O0600-324424S910	STOW_6068	CPP	1.008	1.008	0.000	0.000	0.000
O-06-00	SUB-O0600-324424S910	MROX_6069	CPP	0.133	0.133	0.000	0.000	0.000
O-06-00	SUB-O0600-324424S910	MROX_6070	CPP	0.100	0.067	0.000	0.000	0.033
O-06-00	SUB-O0600-324424S910	MROX_6071	CPP	0.194	0.194	0.000	0.000	0.000
O-06-00	SUB-O0600-324424S910	MROX_6072	CPP	0.063	0.059	0.000	0.000	0.004
O-06-00	SUB-O0600-324424S910	MROX_6073	CPP	0.132	0.119	0.000	0.000	0.013
O-06-00	SUB-O0600-324424S910	MROX_6074	CPP	0.062	0.060	0.000	0.000	0.002
O-06-00	SUB-O0600-324424S910	MROX_6075	CPP	0.192	0.192	0.000	0.000	0.000
O-06-00	SUB-O0600-324424S910	MROX_6076	CPP	0.097	0.097	0.000	0.000	0.000
O-06-00	SUB-O0600-324424S910	MROX_6077	CPP	0.069	0.068	0.000	0.000	0.001
O-06-00	SUB-O0600-328422S903	MROX_6078	CPP	0.088	0.000	0.088	0.000	0.000
O-06-00	SUB-O0600-328422S903	MROX_6079	CPP	0.244	0.237	0.000	0.000	0.007
O-06-00	SUB-O0600-324424S910	MROX_6080	CPP	0.173	0.000	0.153	0.000	0.020
O-06-00	SUB-O0600-324424S910	MROX_6081	CPP	0.068	0.068	0.000	0.000	0.000
O-06-00	SUB-O0600-324424S910	MROX_6082	CPP	0.267	0.264	0.000	0.000	0.003
O-06-00	SUB-O0600-324424S910	MROX_6083	CPP	0.200	0.200	0.000	0.000	0.000
O-06-00	SUB-O0600-324424S910	MROX_6084	CPP	0.082	0.078	0.000	0.000	0.004
O-06-00	SUB-O0600-324424S910	MROX_6085	CPP	0.214	0.208	0.000	0.000	0.006

ALCOSAN POC	Model Subcatchment	Concept Comm / Inst Project UID	BMP Type	Concept Municipal Project Area (acres)	Taxable (acres)	Exempt (acres)	Provisionally Exempt (acres)	Public ROW (acres)
O-06-00	SUB-O0600-324424S910	MROX_6086	CPP	0.370	0.000	0.365	0.000	0.005
O-06-00	SUB-O0600-327424S905	MROX_6087	CPP	1.425	1.425	0.000	0.000	0.000
O-06-00	SUB-O0600-324424S910	MROX_6088	CPP	0.229	0.210	0.000	0.000	0.019
O-06-00	SUB-O0600-328422S903	MROX_6089	CPP	0.571	0.545	0.000	0.000	0.026
O-06-00	SUB-O0600-328422S903	MROX_6090	CPP	0.211	0.000	0.183	0.000	0.028
O-06-00	SUB-O0600-328422S903	MROX_6091	CPP	0.238	0.184	0.000	0.000	0.054
O-06-00	SUB-O0600-328422S903	MROX_6092	CPP	0.067	0.000	0.033	0.000	0.034
O-06-00	SUB-O0600-328422S903	MROX_6093	CPP	0.047	0.000	0.026	0.000	0.021
O-06-00	SUB-O0600-324424S910	MROX_6094	CPP	0.055	0.035	0.000	0.000	0.020
C-04-00	SUB-C09C13-321423S046	STOW_7001	GR	0.949	0.000	0.949	0.000	0.000
C-04-00	SUB-C-04-00-M1	MROX_7002	GR	2.338	2.338	0.000	0.000	0.000
C-04-00	SUB-C-04-00-M1	MROX_7003	GR	1.328	1.328	0.000	0.000	0.000
C-04-00	SUB-C-04-00-M1	MROX_7004	GR	0.191	0.190	0.000	0.000	0.001
C-04-00	SUB-C-04-00-M1	MROX_7005	GR	0.111	0.105	0.006	0.000	0.000
C-04-00	SUB-C-04-00-M1	MROX_7006	GR	0.204	0.026	0.172	0.000	0.006
C-04-00	SUB-C-04-00-M1	MROX_7007	GR	0.137	0.117	0.000	0.000	0.020
C-04-00	SUB-C-04-00-M1	MROX_7008	GR	0.205	0.205	0.000	0.000	0.000
C-04-00	SUB-C0900-323421S025	MROX_7009	GR	0.239	0.000	0.237	0.000	0.002
C-04-00	SUB-C0900-323421S025	MROX_7010	GR	0.153	0.153	0.000	0.000	0.000
C-04-00	SUB-C0900-323421S025	MROX_7011	GR	0.183	0.000	0.183	0.000	0.000
C-04-00	SUB-C0900-323421S025	MROX_7012	GR	0.181	0.181	0.000	0.000	0.000
C-04-00	SUB-C0900-323421S025	MROX_7013	GR	0.441	0.441	0.000	0.000	0.000
C-04-00	SUB-C0900-325420S901	MROX_7014	GR	0.853	0.853	0.000	0.000	0.000
C-04-00	SUB-C0900-325420S901	MROX_7015	GR	0.353	0.353	0.000	0.000	0.000
C-04-00	SUB-C0900-325420S901	MROX_7016	GR	1.340	1.340	0.000	0.000	0.000
C-04-00	SUB-C0900-323421S025	MROX_7017	GR	0.224	0.000	0.224	0.000	0.000
C-04-00	SUB-C0900-323421S025	MROX_7018	GR	0.197	0.197	0.000	0.000	0.000
C-04-00	SUB-C0900-323421S025	MROX_7019	GR	0.258	0.258	0.000	0.000	0.000
C-04-00	SUB-C0900-323421S025	MROX_7020	GR	0.321	0.321	0.000	0.000	0.000
C-04-00	SUB-C0900-323421S025	MROX_7021	GR	0.197	0.197	0.000	0.000	0.000

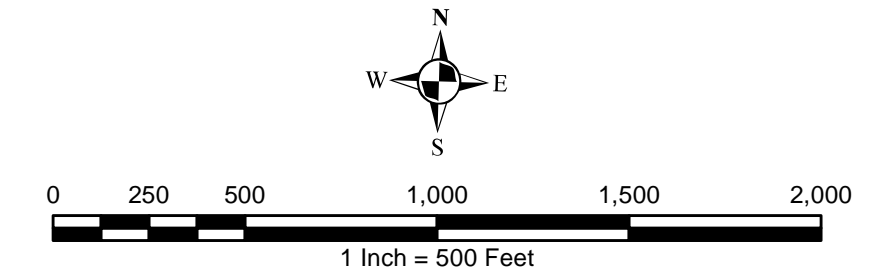
ALCOSAN POC	Model Subcatchment	Concept Comm / Inst Project UID	BMP Type	Concept Municipal Project Area (acres)	Taxable (acres)	Exempt (acres)	Provisionally Exempt (acres)	Public ROW (acres)
C-04-00	SUB-C0900-323421S025	MROX_7022	GR	0.470	0.470	0.000	0.000	0.000
C-04-00	SUB-C09C13-320422S999	MROX_7023	GR	0.431	0.000	0.431	0.000	0.000
C-06-00	SUB-C-06-00-M1	MROX_7024	GR	0.177	0.175	0.000	0.000	0.002
C-06-00	SUB-C-06-00-M1	MROX_7025	GR	0.217	0.211	0.000	0.000	0.006
O-03-00	O-03-00-M4	STOW_7026	GR	0.137	0.000	0.128	0.000	0.009
O-03-00	O-03-00-M4	STOW_7027	GR	1.465	1.465	0.000	0.000	0.000
O-03-00	O-03-00-M4	STOW_7028	GR	0.156	0.153	0.000	0.003	0.000
O-03-00	O-03-00-M4	STOW_7029	GR	1.037	1.037	0.000	0.000	0.000
O-03-00	O-03-00-M4	STOW_7030	GR	2.603	2.603	0.000	0.000	0.000
O-04-00	O-04-00-DN	STOW_7031	GR	0.682	0.682	0.000	0.000	0.000
O-04-00	O-04-00-M7	STOW_7032	GR	0.165	0.000	0.165	0.000	0.000
O-04-00	O-04-00-M1	STOW_7033	GR	0.306	0.305	0.000	0.000	0.001
O-04-00	O-04-00-M1	STOW_7034	GR	0.262	0.262	0.000	0.000	0.000
O-04-00	O-04-00-M1	STOW_7035	GR	0.479	0.479	0.000	0.000	0.000
O-04-00	O-04-00-M1	STOW_7036	GR	0.459	0.459	0.000	0.000	0.000
O-04-00	O-04-00-M1	STOW_7037	GR	0.124	0.086	0.000	0.000	0.038
O-04-00	O-04-00-M1	STOW_7038	GR	0.126	0.126	0.000	0.000	0.000
O-04-00	O-04-00-M7	STOW_7039	GR	0.300	0.288	0.000	0.000	0.012
O-05A-00	O-05A-00-M2	STOW_7040	GR	0.162	0.162	0.000	0.000	0.000
O-05A-00	O-05A-00-M2	STOW_7041	GR	0.197	0.197	0.000	0.000	0.000
O-05B-00	O-05B-00-M2	STOW_7042	GR	0.206	0.206	0.000	0.000	0.000
O-05B-00	O-05B-00-M2	STOW_7043	GR	0.607	0.607	0.000	0.000	0.000
O-05B-00	O-05B-00-M2	STOW_7044	GR	0.336	0.336	0.000	0.000	0.000
O-05B-00	O-04-00SAN/O-03-00STM	STOW_7045	GR	0.158	0.000	0.158	0.000	0.000
O-05B-00	O-05B-00-M2	STOW_7046	GR	0.435	0.435	0.000	0.000	0.000
O-05B-00	O-05B-00-M2	STOW_7047	GR	0.618	0.607	0.000	0.000	0.011
O-05B-00	O-05B-00-M2	STOW_7048	GR	0.187	0.187	0.000	0.000	0.000
O-06-00	SUB-O0600-328422S903	MROX_7049	GR	0.282	0.274	0.000	0.000	0.008
O-06-00	SUB-O0600-324424S910	MROX_7050	GR	0.202	0.202	0.000	0.000	0.000
O-06-00	SUB-O0600-324424S910	MROX_7051	GR	1.243	1.234	0.000	0.000	0.009

ALCOSAN POC	Model Subcatchment	Concept Comm / Inst Project UID	BMP Type	Concept Municipal Project Area (acres)	Taxable (acres)	Exempt (acres)	Provisionally Exempt (acres)	Public ROW (acres)
O-06-00	SUB-00600-327424S905	STOW_7052	GR	0.520	0.520	0.000	0.000	0.000
O-06-00	SUB-00600-327424S905	STOW_7053	GR	3.416	3.416	0.000	0.000	0.000
O-06-00	SUB-00600-324424S910	MROX_7054	GR	0.313	0.000	0.313	0.000	0.000
O-06-00	SUB-00600-324424S910	MROX_7055	GR	0.111	0.077	0.000	0.000	0.034
O-06-00	SUB-00600-327424S905	STOW_7056	GR	0.399	0.399	0.000	0.000	0.000
O-06-00	SUB-00600-324424S910	MROX_7057	GR	0.099	0.099	0.000	0.000	0.000
O-06-00	SUB-00600-324424S910	MROX_7058	GR	0.123	0.123	0.000	0.000	0.000
O-06-00	SUB-00600-327424S905	STOW_7059	GR	0.174	0.174	0.000	0.000	0.000
O-06-00	SUB-00600-324424S910	MROX_7060	GR	0.133	0.132	0.000	0.000	0.001
O-06-00	SUB-00600-324424S910	MROX_7061	GR	1.129	1.087	0.000	0.000	0.042
O-06-00	SUB-00600-324424S910	MROX_7062	GR	0.535	0.511	0.000	0.000	0.024
O-06-00	SUB-00600-324424S910	MROX_7063	GR	0.317	0.302	0.000	0.000	0.015
O-06-00	SUB-00600-324424S910	MROX_7064	GR	0.368	0.367	0.000	0.000	0.001
O-06-00	SUB-00600-327424S905	STOW_7065	GR	2.806	2.806	0.000	0.000	0.000
O-06-00	SUB-00600-324424S910	STOW_7066	GR	0.187	0.000	0.187	0.000	0.000
O-06-00	SUB-00600-324424S911	STOW_7067	GR	0.563	0.512	0.000	0.000	0.051
O-06-00	SUB-00600-327424S905	STOW_7068	GR	1.535	1.535	0.000	0.000	0.000
O-06-00	SUB-00600-327424S905	STOW_7069	GR	0.255	0.255	0.000	0.000	0.000
O-06-00	SUB-00600-327424S905	STOW_7070	GR	1.013	0.988	0.000	0.000	0.025
O-06-00	SUB-00600-327424S905	STOW_7071	GR	0.109	0.109	0.000	0.000	0.000
O-06-00	SUB-00600-327424S905	MROX_7072	GR	2.633	2.615	0.000	0.017	0.001
O-06-00	SUB-00600-328422S903	MROX_7073	GR	0.211	0.208	0.000	0.000	0.003
O-06-00	SUB-00600-328422S903	MROX_7074	GR	0.454	0.454	0.000	0.000	0.000
O-06-00	SUB-00600-328422S903	MROX_7075	GR	0.267	0.267	0.000	0.000	0.000
O-06-00	SUB-00600-328422S903	MROX_7076	GR	0.407	0.407	0.000	0.000	0.000
O-06-00	SUB-00600-324424S910	MROX_7077	GR	1.138	1.075	0.000	0.059	0.004
O-06-00	SUB-00600-324424S911	STOW_7078	GR	0.115	0.107	0.000	0.000	0.008
O-06-00	SUB-00600-324424S911	STOW_7079	GR	0.365	0.331	0.000	0.000	0.034
O-06-00	SUB-00600-324424S911	STOW_7080	GR	0.326	0.326	0.000	0.000	0.000
O-06-00	SUB-00600-327424S905	STOW_7081	GR	0.538	0.538	0.000	0.000	0.000

ALCOSAN POC	Model Subcatchment	Concept Comm / Inst Project UID	BMP Type	Concept Municipal Project Area (acres)	Taxable (acres)	Exempt (acres)	Provisionally Exempt (acres)	Public ROW (acres)
O-06-00	SUB-O0600-324424S910	MROX_7082	GR	0.142	0.142	0.000	0.000	0.000
O-06-00	SUB-O0600-324424S910	MROX_8002	SRPP	0.904	0.001	0.000	0.000	0.903
O-06-00	SUB-O0600-324424S910	MROX_8003	SRPP	0.404	0.000	0.000	0.000	0.404
O-06-00	SUB-O0600-324424S910	MROX_8004	SRPP	0.281	0.000	0.000	0.000	0.281
O-06-00	SUB-O0600-324424S910	MROX_8005	SRPP	0.391	0.000	0.000	0.000	0.391
C-09-00	SUB-C09C13-320422S001	MROX_8006	SRPP	0.375	0.008	0.000	0.000	0.367
C-09-00	SUB-C09C13-321423S046	STOW_8009	SRPP	1.170	0.000	0.000	0.000	1.170
C-09-00	SUB-C09C13-319424S905	STOW_8010	SRPP	0.274	0.003	0.000	0.000	0.271
O-03-00	O-03-00-M4	STOW_8012	SRPP	0.453	0.000	0.000	0.000	0.453
C-09-00	SUB-C0900-323422S005	STOW_8014	SRPP	0.255	0.000	0.000	0.000	0.255
C-09-00	SUB-C0900-323422S005	STOW_8015	SRPP	2.118	0.000	0.000	0.000	2.118
C-08-00	SUB-C-08-00-M1	MROX_8016	SRPP	0.215	0.000	0.000	0.008	0.207
C-06-00	SUB-C-06-00-M1	MROX_8017	SRPP	1.052	0.015	0.072	0.000	0.965
C-09-00	SUB-C0900-323421S025	MROX_8018	SRPP	0.402	0.005	0.000	0.000	0.397
C-06-00	SUB-C-06-00-M1	MROX_8019	SRPP	0.739	0.013	0.142	0.000	0.584
O-06-00	SUB-O0600-328422S903	MROX_8020	SRPP	0.447	0.000	0.128	0.000	0.319
C-09-00	SUB-C0900-322420S017	MROX_8021	SRPP	0.185	0.000	0.000	0.000	0.185
C-09-00	SUB-C09C13-320422S905	MROX_8022	SRPP	0.696	0.000	0.000	0.000	0.696
C-09-00	SUB-C0900-323421S025	MROX_8023	SRPP	0.362	0.000	0.000	0.000	0.362
C-09-00	SUB-C0900-323421S025	MROX_8024	SRPP	0.463	0.000	0.000	0.000	0.463
C-08-00	SUB-C-08-00-M1	MROX_8026	SRPP	0.349	0.000	0.000	0.030	0.319
O-06-00	SUB-O0600-324424S910	MROX_8027	SRPP	1.159	0.000	0.000	0.000	1.159
C-09-00	SUB-C09C13-321423S046	STOW_8028	SRPP	0.497	0.000	0.000	0.000	0.497
O-01-00	O-01-00-M5	STOW_8030	SRPP	0.294	0.001	0.000	0.000	0.293
C-09-00	SUB-C0900-323421S025	MROX_8031	SRPP	0.791	0.022	0.000	0.000	0.769



- ★ ALCOSAN Structures
- ALCOSAN Shallow-Cut Interceptor
- - - ALCOSAN Deep Tunnel Interceptor
- ▨ Special Case
- Concept Commercial / Institutional Permeable Pavement Projects
- Concept Green Roof Projects
- State Roads
- Combined Sewer Subcatchment
- Municipal Boundaries



ALCOSAN GSI Project
 Sto Rox O-01 thru C-09
 Concept Commercial / Institutional
 and Green Roofs GSI Projects

P:\m\INFR\03\03\05 ALCOSAN GSI Project\03 - Task 2.1\Figures\Surface Comm\msd

Source: Esri, DeLorme, USGS, NAVTEQ, GeoEye, AeroGRID, IGN, SVP, and the GIS User Community