

5.29 Study Area 29 – Woods Run

These findings apply to ALCOSAN Point of Connection O-27, which includes combined sewer systems in the City of Pittsburgh.

Woods Run - BMP GIS Features

The SUSTAIN BMP siting tool analysis resulted in identification of a total of 5,478 BMP GIS Features covering 304 acres, which consisted of the following:

Table 5.29-1 - TOTAL SUSTAIN BMP Features Output

SUSTAIN BMP Feature Type	Number of Features	Area of BMP Features (Acres)
Permeable Pavement	1,273	69
Bioretention	2,262	132
Infiltration Basin/Trenches	197	9
Vegetated Filter Strips	616	52
Grass Swales	1,020	40
Constructed Wetlands	110	2

Locations of all identified BMP GIS features are presented on the SUSTAIN BMP Features Figure.

Woods Run - Concept Municipal GSI Projects

Based on the BMP features, 286 concept Municipal GSI Projects were identified covering 22 total acres with a corresponding drainage area delineation of 77 total acres and consisted of the following:

Table 5.29-2 - Summary of Identified Concept Municipal GSI Projects

Concept GSI Technology	Number of Projects	GSI Project Area (Acres)	Project Drainage Area (Acres)
Permeable Pavement	64	17	67
Bioretention	215	5	9
Infiltration Basin/Trenches	6	< 1	1
Vegetated Filter Strips	0	0	0
Grass Swales	0	0	0
Constructed Wetlands	1	1	1

Project statistics including ALCOSAN POC, model subcatchment, BMP type, project area, area of project inside and outside of the public right-of-way, tributary drainage area, and tributary impervious drainage area are provided in the Concept Municipal Projects Table. Locations of all identified Concept Municipal GSI projects are presented in the Concept Municipal GSI Projects Figure (1) and the corresponding delineated tributary drainage areas are presented by BMP in the Individual Project Drainage Area Figures (4).

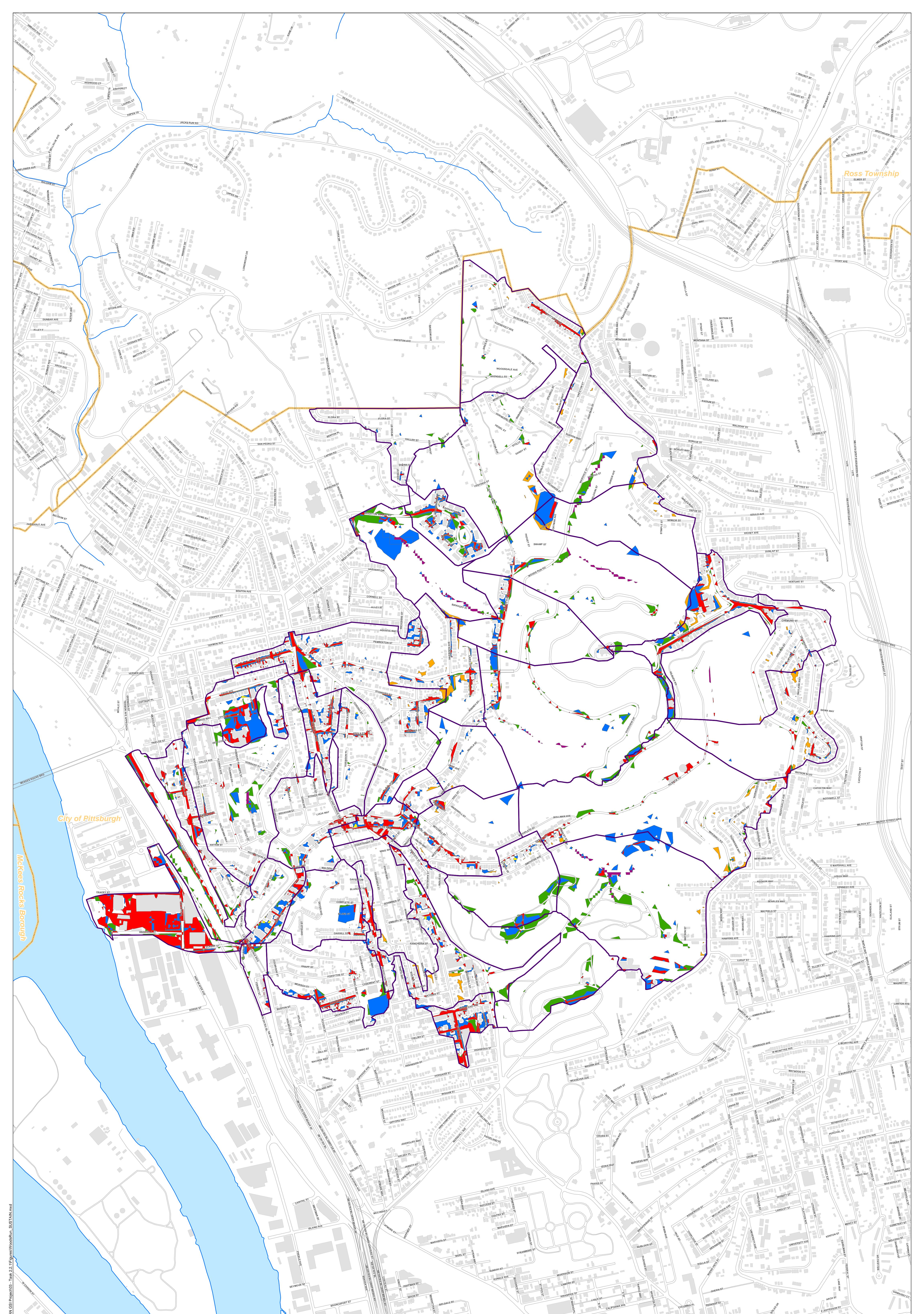
Woods Run - Concept Commercial/Institutional and Special Case GSI Projects

Based on the BMP features, 72 concept Commercial/Institutional and Special Case GSI Projects were identified covering 23 total acres and consisted of the following:

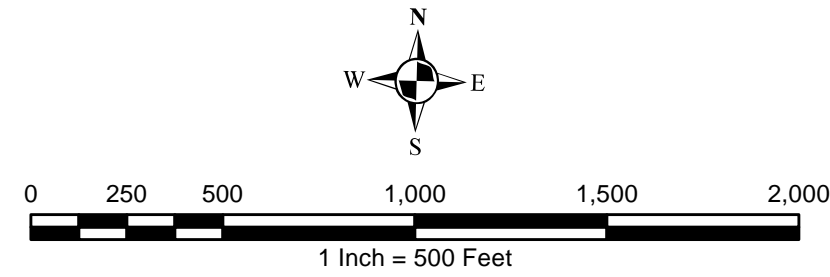
Table 5.29-3 - Summary of Identified Concept Commercial/Institutional and Special Case GSI Projects

Concept GSI Technology or Special Case Project Category	Number of Projects	GSI Project Area (Acres)
Commercial/Institutional Permeable Pavement	39	10
Commercial/Institutional Green Roofs	22	7
State Route Permeable Pavement	11	6
Busway Permeable Pavement	0	0
Busway Bioretention	0	0

Project statistics including ALCOSAN POC, model subcatchment, BMP type, project area, area of project taxable, exempt, provisionally exempt and in the public right-of-way are provided in Concept Commercial / Institutional GSI Projects Table. Locations of all identified Concept Commercial / Institutional GSI projects are presented in the Concept Commercial / Institutional GSI Projects Figure (1).



- Permeable Pavement
- Vegetated Filter Strips
- Combined Sewer Subcatchment
- Bioretention Basin
- Grass Swales
- Municipal Boundaries
- Infiltration Basin / Trench
- Constructed Wetlands



ALCOSAN GSI Project
Woods Run (O-27)
SUSTAIN BMP Features

P:\m\INPROJ\3103\05_ALCOSAN_GSI_Project\03 - Task 2.1\Figures\WoodsRun_SUSTAIN.mxd

Woods Run Concept Municipal Projects

June 16, 2014

Revised October 7, 2014

*Note: The drainage area presented in this table is representative of the individual drainage area tributary to each concept municipal project without any revisions to account for overlap, without engineering judgment revisions applied, and without the drainage areas being clipped to their corresponding model subcatchments.

ALCOSAN POC	Model Subcatchment	Concept Municipal Project UID	BMP Type	Concept Municipal Project Area (acres)	Public ROW or Parcel		Concept Municipal Project Individual Drainage Area (acres)*	Concept Municipal Project Individual Project Impervious Drainage Area (acres)*
					Area of Municipal Project in Public ROW (acres)	Area of Municipal Project outside of Public ROW (acres)		
O-27-00	O-27-DWF-11/O-27-C-27	WOOD_1	PP	0.408	0.408	0.000	0.933	0.482
O-27-00	O-27-DWF-8/O-27-C-9	WOOD_2	PP	0.284	0.284	0.000	0.591	0.258
O-27-00	O-27-DWF-8/O-27-C-9	WOOD_3	PP	0.125	0.125	0.000	0.290	0.137
O-27-00	O-27-DWF-8/O-27-C-9	WOOD_4	PP	0.077	0.077	0.000	0.208	0.108
O-27-00	O-27-DWF-8/O-27-C-9	WOOD_5	PP	0.478	0.478	0.000	1.350	0.635
O-27-00	O-27-DWF-7/O-27-C-8	WOOD_6	PP	0.152	0.152	0.000	0.386	0.180
O-27-00	O-27-DWF-1/O-27-C-1-B	WOOD_7	PP	0.053	0.053	0.000	0.096	0.056
O-27-00	O-27-DWF-6/O-27-C-5-B	WOOD_8	PP	0.180	0.180	0.000	0.416	0.252
O-27-00	O-27-DWF-2/O-27-C-3	WOOD_9	PP	0.466	0.464	0.002	5.253	1.458
O-27-00	O-27-DWF-3/O-27-C-29	WOOD_10	PP	0.435	0.435	0.000	1.808	0.733
O-27-00	O-27-DWF-4/O-27-C-7	WOOD_11	PP	0.278	0.278	0.000	0.640	0.428
O-27-00	O-27-DWF-4/O-27-C-7	WOOD_12	PP	0.091	0.091	0.000	0.154	0.107
O-27-00	O-27-DWF-8/O-27-C-9	WOOD_13	PP	0.256	0.249	0.007	0.449	0.248
O-27-00	O-27-DWF-8/O-27-C-9	WOOD_14	PP	0.415	0.295	0.120	1.274	0.570
O-27-00	O-27-DWF-8/O-27-C-9	WOOD_15	PP	0.073	0.073	0.000	0.087	0.064
O-27-00	O-27-DWF-5/O-27-C-2	WOOD_16	PP	0.053	0.053	0.000	0.177	0.057
O-27-00	O-27-DWF-9/O-27-C-6-A	WOOD_17	PP	1.235	1.235	0.000	5.098	3.020
O-27-00	O-27-DWF-18/O-27-C-23	WOOD_18	PP	0.072	0.072	0.000	0.094	0.050
O-27-00	O-27-DWF-3/O-27-C-29	WOOD_19	PP	0.043	0.043	0.000	0.077	0.053
O-27-00	O-27-DWF-3/O-27-C-29	WOOD_20	PP	0.093	0.093	0.000	0.170	0.093
O-27-00	O-27-DWF-13/O-27-C-13	WOOD_21	PP	0.223	0.223	0.000	1.078	0.443
O-27-00	O-27-DWF-8/O-27-C-9	WOOD_22	PP	0.157	0.157	0.000	0.247	0.153
O-27-00	O-27-DWF-1/O-27-C-1-B	WOOD_23	PP	0.087	0.087	0.000	0.173	0.082
O-27-00	O-27-DWF-10/O-27-C-20	WOOD_24	PP	0.363	0.000	0.363	0.634	0.353
O-27-00	O-27-DWF-15/O-27-C-15-B	WOOD_25	PP	0.332	0.332	0.000	0.418	0.353
O-27-00	O-27-DWF-15/O-27-C-15-B	WOOD_26	PP	0.187	0.187	0.000	0.702	0.293
O-27-00	O-27-DWF-16/O-27-C-14	WOOD_27	PP	0.072	0.072	0.000	0.170	0.091
O-27-00	O-27-DWF-16/O-27-C-14	WOOD_28	PP	0.343	0.340	0.003	1.797	0.694

ALCOSAN POC	Model Subcatchment	Concept Municipal Project UID	BMP Type	Concept Municipal Project Area (acres)	Public ROW or Parcel		Concept Municipal Project Individual Drainage Area (acres)*	Concept Municipal Project Individual Project Impervious Drainage Area (acres)*
					Area of Municipal Project in Public ROW (acres)	Area of Municipal Project outside of Public ROW (acres)		
O-27-00	O-27-DWF-13/O-27-C-13	WOOD_29	PP	0.213	0.000	0.213	0.328	0.150
O-27-00	O-27-DWF-2/O-27-C-4-B	WOOD_30	PP	0.302	0.285	0.017	2.172	0.630
O-27-00	O-27-DWF-9/O-27-C-6-C	WOOD_31	PP	0.457	0.455	0.002	1.866	0.816
O-27-00	O-27-DWF-4/O-27-C-10	WOOD_32	PP	0.759	0.759	0.000	6.756	2.115
O-27-00	O-27-DWF-2/O-27-C-4-A	WOOD_33	PP	0.479	0.440	0.039	1.680	0.799
O-27-00	O-27-DWF-9/O-27-C-6-C	WOOD_34	PP	0.101	0.101	0.000	0.174	0.121
O-27-00	O-27-DWF-10/O-27-C-18	WOOD_35	PP	0.333	0.333	0.000	0.474	0.313
O-27-00	O-27-DWF-17/O-27-S-22-A	WOOD_36	PP	0.709	0.644	0.065	1.931	0.819
O-27-00	O-27-DWF-10/O-27-S-21	WOOD_37	PP	0.070	0.007	0.063	0.105	0.025
O-27-00	O-27-DWF-10/O-27-S-21	WOOD_38	PP	0.121	0.000	0.121	0.296	0.124
O-27-00	O-27-DWF-15/O-27-C-15-A	WOOD_39	PP	0.638	0.605	0.033	1.952	1.121
O-27-00	O-27-DWF-15/O-27-C-15-A	WOOD_40	PP	0.166	0.166	0.000	0.183	0.171
O-27-00	O-27-DWF-17/O-27-S-22-A	WOOD_41	PP	0.078	0.000	0.078	0.144	0.037
O-27-00	O-27-DWF-17/O-27-S-22-A	WOOD_42	PP	0.074	0.004	0.070	0.212	0.049
O-27-00	O-27-DWF-17/O-27-S-22-A	WOOD_43	PP	0.122	0.002	0.120	0.301	0.090
O-27-00	O-27-DWF-15/O-27-C-15-A	WOOD_44	PP	0.126	0.000	0.126	0.223	0.139
O-27-00	O-27-DWF-10/O-27-C-19	WOOD_45	PP	0.860	0.000	0.860	6.159	1.001
O-27-00	O-27-DWF-17/O-27-S-22-A	WOOD_46	PP	0.123	0.007	0.116	0.501	0.172
O-27-00	O-27-DWF-6/O-27-C-5-A	WOOD_47	PP	0.165	0.165	0.000	0.302	0.179
O-27-00	O-27-DWF-6/O-27-C-5-A	WOOD_48	PP	0.134	0.132	0.002	0.197	0.133
O-27-00	O-27-DWF-6/O-27-C-5-A	WOOD_49	PP	0.102	0.102	0.000	0.260	0.173
O-27-00	O-27-DWF-4/O-27-C-10	WOOD_50	PP	0.107	0.107	0.000	0.304	0.182
O-27-00	O-27-DWF-1/O-27-C-1-A	WOOD_51	PP	1.464	1.440	0.024	9.859	5.801
O-27-00	O-27-DWF-13/O-27-C-11	WOOD_52	PP	0.391	0.391	0.000	2.270	0.731
O-27-00	O-27-DWF-9/O-27-C-6-C	WOOD_53	PP	0.183	0.183	0.000	0.250	0.184
O-27-00	O-27-DWF-2/O-27-C-4-B	WOOD_54	PP	0.047	0.047	0.000	0.078	0.039
O-27-00	O-27-DWF-6/O-27-C-5-B	WOOD_55	PP	0.038	0.038	0.000	0.058	0.032
O-27-00	O-27-DWF-6/O-27-C-5-B	WOOD_56	PP	0.130	0.130	0.000	0.216	0.124
O-27-00	O-27-DWF-6/O-27-C-5-B	WOOD_57	PP	0.280	0.280	0.000	0.681	0.338
O-27-00	O-27-DWF-4/O-27-C-7	WOOD_58	PP	0.055	0.047	0.008	0.061	0.059
O-27-00	O-27-DWF-6/O-27-C-5-B	WOOD_59	PP	0.244	0.244	0.000	1.041	0.542
O-27-00	O-27-DWF-9/O-27-C-6-C	WOOD_60	PP	0.061	0.061	0.000	0.095	0.073
O-27-00	O-27-DWF-2/O-27-C-28	WOOD_61	PP	0.157	0.157	0.000	0.168	0.154
O-27-00	O-27-DWF-17/O-27-S-22-A	WOOD_62	PP	0.126	0.000	0.126	0.228	0.081

ALCOSAN POC	Model Subcatchment	Concept Municipal Project UID	BMP Type	Concept Municipal Project Area (acres)	Public ROW or Parcel		Concept Municipal Project Individual Drainage Area (acres)*	Concept Municipal Project Individual Project Impervious Drainage Area (acres)*
					Area of Municipal Project in Public ROW (acres)	Area of Municipal Project outside of Public ROW (acres)		
O-27-00	O-27-DWF-9/O-27-C-6-C	WOOD_63	PP	0.022	0.018	0.004	0.035	0.014
O-27-00	O-27-DWF-6/O-27-C-5-B	WOOD_64	PP	0.107	0.107	0.000	0.217	0.129
O-27-00	O-27-DWF-1/O-27-C-1-A	WOOD_1001	BR	0.045	0.000	0.045	0.106	0.019
O-27-00	O-27-DWF-10/O-27-C-18	WOOD_1002	BR	0.014	0.014	0.000	0.021	0.003
O-27-00	O-27-DWF-1/O-27-C-1-A	WOOD_1003	BR	0.022	0.010	0.012	0.042	0.042
O-27-00	O-27-DWF-1/O-27-C-1-A	WOOD_1004	BR	0.066	0.030	0.036	0.084	0.084
O-27-00	O-27-DWF-2/O-27-C-4-A	WOOD_1005	BR	0.051	0.032	0.019	0.068	0.016
O-27-00	O-27-DWF-17/O-27-C-26	WOOD_1006	BR	0.005	0.003	0.002	0.007	0.000
O-27-00	O-27-DWF-17/O-27-C-26	WOOD_1007	BR	0.018	0.014	0.004	0.020	0.007
O-27-00	O-27-DWF-17/O-27-S-22-A	WOOD_1008	BR	0.013	0.000	0.013	0.019	0.000
O-27-00	O-27-DWF-17/O-27-S-22-A	WOOD_1009	BR	0.038	0.038	0.000	0.110	0.068
O-27-00	O-27-DWF-17/O-27-S-22-A	WOOD_1010	BR	0.016	0.002	0.014	0.031	0.001
O-27-00	O-27-DWF-17/O-27-S-22-A	WOOD_1011	BR	0.005	0.000	0.005	0.006	0.000
O-27-00	O-27-DWF-17/O-27-S-22-A	WOOD_1012	BR	0.002	0.000	0.002	0.003	0.000
O-27-00	O-27-DWF-17/O-27-S-22-A	WOOD_1013	BR	0.007	0.000	0.007	0.013	0.002
O-27-00	O-27-DWF-17/O-27-S-22-A	WOOD_1014	BR	0.005	0.000	0.005	0.006	0.003
O-27-00	O-27-DWF-17/O-27-S-22-A	WOOD_1015	BR	0.017	0.017	0.000	0.020	0.011
O-27-00	O-27-DWF-17/O-27-S-22-A	WOOD_1016	BR	0.006	0.000	0.006	0.016	0.003
O-27-00	O-27-DWF-17/O-27-S-22-A	WOOD_1017	BR	0.007	0.000	0.007	0.011	0.002
O-27-00	O-27-DWF-17/O-27-S-22-A	WOOD_1018	BR	0.006	0.000	0.006	0.007	0.003
O-27-00	O-27-DWF-17/O-27-S-22-A	WOOD_1019	BR	0.005	0.002	0.003	0.007	0.000
O-27-00	O-27-DWF-17/O-27-S-22-A	WOOD_1020	BR	0.007	0.000	0.007	0.011	0.000
O-27-00	O-27-DWF-17/O-27-S-22-A	WOOD_1021	BR	0.006	0.002	0.004	0.010	0.000
O-27-00	O-27-DWF-17/O-27-S-22-A	WOOD_1022	BR	0.005	0.003	0.002	0.006	0.000
O-27-00	O-27-DWF-17/O-27-S-22-A	WOOD_1023	BR	0.003	0.000	0.003	0.004	0.000
O-27-00	O-27-DWF-17/O-27-S-22-A	WOOD_1024	BR	0.057	0.000	0.057	0.092	0.010
O-27-00	O-27-DWF-17/O-27-S-22-A	WOOD_1025	BR	0.005	0.000	0.005	0.009	0.002
O-27-00	O-27-DWF-17/O-27-S-22-A	WOOD_1026	BR	0.007	0.007	0.000	0.013	0.005
O-27-00	O-27-DWF-17/O-27-S-22-A	WOOD_1027	BR	0.006	0.006	0.000	0.006	0.002
O-27-00	O-27-DWF-17/O-27-S-22-A	WOOD_1028	BR	0.004	0.000	0.004	0.005	0.001
O-27-00	O-27-DWF-17/O-27-S-22-A	WOOD_1029	BR	0.004	0.000	0.004	0.006	0.000
O-27-00	O-27-DWF-17/O-27-S-22-A	WOOD_1030	BR	0.004	0.000	0.004	0.006	0.002
O-27-00	O-27-DWF-17/O-27-S-22-A	WOOD_1031	BR	0.028	0.000	0.028	0.082	0.004
O-27-00	O-27-DWF-17/O-27-S-22-A	WOOD_1032	BR	0.004	0.000	0.004	0.008	0.001

ALCOSAN POC	Model Subcatchment	Concept Municipal Project UID	BMP Type	Concept Municipal Project Area (acres)	Public ROW or Parcel		Concept Municipal Project Individual Drainage Area (acres)*	Concept Municipal Project Individual Project Impervious Drainage Area (acres)*
					Area of Municipal Project in Public ROW (acres)	Area of Municipal Project outside of Public ROW (acres)		
O-27-00	O-27-DWF-10/O-27-S-21	WOOD_1033	BR	0.007	0.006	0.001	0.007	0.000
O-27-00	O-27-DWF-10/O-27-S-21	WOOD_1034	BR	0.006	0.006	0.000	0.007	0.001
O-27-00	O-27-DWF-10/O-27-S-21	WOOD_1035	BR	0.012	0.009	0.003	0.013	0.002
O-27-00	O-27-DWF-10/O-27-S-21	WOOD_1036	BR	0.008	0.000	0.008	0.010	0.005
O-27-00	O-27-DWF-10/O-27-C-18	WOOD_1037	BR	0.029	0.023	0.006	0.044	0.000
O-27-00	O-27-DWF-10/O-27-C-18	WOOD_1038	BR	0.074	0.036	0.038	0.096	0.004
O-27-00	O-27-DWF-10/O-27-C-18	WOOD_1039	BR	0.047	0.025	0.022	0.057	0.001
O-27-00	O-27-DWF-10/O-27-C-18	WOOD_1040	BR	0.011	0.003	0.008	0.013	0.000
O-27-00	O-27-DWF-10/O-27-C-18	WOOD_1041	BR	0.003	0.003	0.000	0.004	0.000
O-27-00	O-27-DWF-10/O-27-C-18	WOOD_1042	BR	0.005	0.004	0.001	0.007	0.002
O-27-00	O-27-DWF-10/O-27-C-18	WOOD_1043	BR	0.005	0.005	0.000	0.006	0.002
O-27-00	O-27-DWF-10/O-27-C-18	WOOD_1044	BR	0.041	0.035	0.006	0.053	0.023
O-27-00	O-27-DWF-10/O-27-C-18	WOOD_1045	BR	0.010	0.007	0.003	0.012	0.005
O-27-00	O-27-DWF-10/O-27-C-19	WOOD_1046	BR	0.037	0.018	0.019	0.043	0.006
O-27-00	O-27-DWF-10/O-27-C-19	WOOD_1047	BR	0.049	0.033	0.016	0.055	0.027
O-27-00	O-27-DWF-10/O-27-C-19	WOOD_1048	BR	0.005	0.004	0.001	0.007	0.001
O-27-00	O-27-DWF-10/O-27-C-19	WOOD_1049	BR	0.031	0.026	0.005	0.070	0.030
O-27-00	O-27-DWF-10/O-27-C-19	WOOD_1050	BR	0.011	0.010	0.001	0.025	0.009
O-27-00	O-27-DWF-10/O-27-C-19	WOOD_1051	BR	0.062	0.000	0.062	0.112	0.047
O-27-00	O-27-DWF-10/O-27-C-19	WOOD_1052	BR	0.024	0.000	0.024	0.027	0.009
O-27-00	O-27-DWF-10/O-27-C-19	WOOD_1053	BR	0.005	0.000	0.005	0.006	0.003
O-27-00	O-27-DWF-10/O-27-C-19	WOOD_1054	BR	0.014	0.000	0.014	0.024	0.004
O-27-00	O-27-DWF-15/O-27-C-15-A	WOOD_1055	BR	0.037	0.000	0.037	0.060	0.020
O-27-00	O-27-DWF-15/O-27-C-15-A	WOOD_1056	BR	0.020	0.000	0.020	0.031	0.009
O-27-00	O-27-DWF-10/O-27-C-19	WOOD_1057	BR	0.012	0.000	0.012	0.014	0.000
O-27-00	O-27-DWF-15/O-27-C-15-A	WOOD_1058	BR	0.010	0.006	0.004	0.015	0.003
O-27-00	O-27-DWF-15/O-27-C-15-A	WOOD_1059	BR	0.058	0.049	0.009	0.110	0.049
O-27-00	O-27-DWF-15/O-27-C-15-A	WOOD_1060	BR	0.059	0.053	0.006	0.103	0.063
O-27-00	O-27-DWF-15/O-27-C-15-A	WOOD_1061	BR	0.009	0.006	0.003	0.010	0.003
O-27-00	O-27-DWF-15/O-27-C-15-A	WOOD_1062	BR	0.108	0.070	0.038	0.236	0.077
O-27-00	O-27-DWF-15/O-27-C-15-A	WOOD_1063	BR	0.035	0.034	0.001	0.079	0.030
O-27-00	O-27-DWF-10/O-27-C-17	WOOD_1064	BR	0.015	0.004	0.011	0.019	0.000
O-27-00	O-27-DWF-4/O-27-C-10	WOOD_1065	BR	0.017	0.017	0.000	0.025	0.022
O-27-00	O-27-DWF-4/O-27-C-10	WOOD_1066	BR	0.008	0.005	0.003	0.014	0.004

ALCOSAN POC	Model Subcatchment	Concept Municipal Project UID	BMP Type	Concept Municipal Project Area (acres)	Public ROW or Parcel		Concept Municipal Project Individual Drainage Area (acres)*	Concept Municipal Project Individual Project Impervious Drainage Area (acres)*
					Area of Municipal Project in Public ROW (acres)	Area of Municipal Project outside of Public ROW (acres)		
O-27-00	O-27-DWF-4/O-27-C-10	WOOD_1067	BR	0.013	0.013	0.000	0.028	0.017
O-27-00	O-27-DWF-4/O-27-C-10	WOOD_1068	BR	0.055	0.038	0.017	0.062	0.019
O-27-00	O-27-DWF-13/O-27-C-11	WOOD_1069	BR	0.005	0.004	0.001	0.008	0.003
O-27-00	O-27-DWF-13/O-27-C-11	WOOD_1070	BR	0.031	0.016	0.015	0.054	0.013
O-27-00	O-27-DWF-9/O-27-C-6-B	WOOD_1071	BR	0.005	0.002	0.003	0.006	0.002
O-27-00	O-27-DWF-9/O-27-C-6-C	WOOD_1072	BR	0.037	0.020	0.017	0.045	0.010
O-27-00	O-27-DWF-9/O-27-C-6-B	WOOD_1073	BR	0.005	0.005	0.000	0.006	0.000
O-27-00	O-27-DWF-9/O-27-C-6-C	WOOD_1074	BR	0.015	0.013	0.002	0.021	0.004
O-27-00	O-27-DWF-9/O-27-C-6-C	WOOD_1075	BR	0.045	0.045	0.000	0.061	0.013
O-27-00	O-27-DWF-9/O-27-C-6-C	WOOD_1076	BR	0.010	0.009	0.001	0.013	0.005
O-27-00	O-27-DWF-9/O-27-C-6-C	WOOD_1077	BR	0.013	0.009	0.004	0.017	0.005
O-27-00	O-27-DWF-9/O-27-C-6-C	WOOD_1078	BR	0.018	0.010	0.008	0.024	0.002
O-27-00	O-27-DWF-9/O-27-C-6-C	WOOD_1079	BR	0.004	0.002	0.002	0.006	0.001
O-27-00	O-27-DWF-9/O-27-C-6-C	WOOD_1080	BR	0.004	0.002	0.002	0.005	0.001
O-27-00	O-27-DWF-9/O-27-C-6-C	WOOD_1081	BR	0.010	0.006	0.004	0.013	0.004
O-27-00	O-27-DWF-9/O-27-C-6-C	WOOD_1082	BR	0.008	0.006	0.002	0.011	0.000
O-27-00	O-27-DWF-2/O-27-C-28	WOOD_1083	BR	0.036	0.033	0.003	0.044	0.021
O-27-00	O-27-DWF-2/O-27-C-3	WOOD_1084	BR	0.053	0.044	0.009	0.076	0.032
O-27-00	O-27-DWF-1/O-27-C-1-A	WOOD_1085	BR	0.020	0.013	0.007	0.022	0.007
O-27-00	O-27-DWF-1/O-27-C-1-A	WOOD_1086	BR	0.016	0.000	0.016	0.029	0.008
O-27-00	O-27-DWF-1/O-27-C-1-C	WOOD_1087	BR	0.023	0.011	0.012	0.041	0.023
O-27-00	O-27-DWF-1/O-27-C-1-C	WOOD_1088	BR	0.083	0.031	0.052	0.158	0.072
O-27-00	O-27-DWF-2/O-27-C-4-B	WOOD_1089	BR	0.009	0.003	0.006	0.015	0.003
O-27-00	O-27-DWF-2/O-27-C-4-B	WOOD_1090	BR	0.004	0.003	0.001	0.006	0.000
O-27-00	O-27-DWF-2/O-27-C-4-A	WOOD_1091	BR	0.010	0.005	0.005	0.016	0.001
O-27-00	O-27-DWF-2/O-27-C-4-A	WOOD_1092	BR	0.051	0.027	0.024	0.080	0.019
O-27-00	O-27-DWF-2/O-27-C-4-A	WOOD_1093	BR	0.051	0.006	0.045	0.081	0.024
O-27-00	O-27-DWF-2/O-27-C-4-A	WOOD_1094	BR	0.012	0.009	0.003	0.015	0.001
O-27-00	O-27-DWF-2/O-27-C-4-A	WOOD_1095	BR	0.027	0.019	0.008	0.039	0.001
O-27-00	O-27-DWF-2/O-27-C-4-A	WOOD_1096	BR	0.048	0.045	0.003	0.069	0.018
O-27-00	O-27-DWF-2/O-27-C-4-A	WOOD_1097	BR	0.047	0.033	0.014	0.072	0.005
O-27-00	O-27-DWF-2/O-27-C-4-A	WOOD_1098	BR	0.047	0.033	0.014	0.096	0.035
O-27-00	O-27-DWF-2/O-27-C-4-A	WOOD_1099	BR	0.061	0.042	0.019	0.117	0.038
O-27-00	O-27-DWF-6/O-27-C-5-A	WOOD_1100	BR	0.016	0.014	0.002	0.022	0.012

ALCOSAN POC	Model Subcatchment	Concept Municipal Project UID	BMP Type	Concept Municipal Project Area (acres)	Public ROW or Parcel		Concept Municipal Project Individual Drainage Area (acres)*	Concept Municipal Project Individual Project Impervious Drainage Area (acres)*
					Area of Municipal Project in Public ROW (acres)	Area of Municipal Project outside of Public ROW (acres)		
O-27-00	O-27-DWF-6/O-27-C-5-B	WOOD_1101	BR	0.008	0.008	0.000	0.011	0.006
O-27-00	O-27-DWF-6/O-27-C-5-A	WOOD_1102	BR	0.004	0.004	0.000	0.006	0.002
O-27-00	O-27-DWF-6/O-27-C-5-A	WOOD_1103	BR	0.010	0.010	0.000	0.014	0.008
O-27-00	O-27-DWF-6/O-27-C-5-A	WOOD_1104	BR	0.005	0.005	0.000	0.006	0.002
O-27-00	O-27-DWF-6/O-27-C-5-A	WOOD_1105	BR	0.010	0.010	0.000	0.013	0.006
O-27-00	O-27-DWF-6/O-27-C-5-A	WOOD_1106	BR	0.029	0.018	0.011	0.049	0.019
O-27-00	O-27-DWF-6/O-27-C-5-A	WOOD_1107	BR	0.035	0.031	0.004	0.085	0.049
O-27-00	O-27-DWF-6/O-27-C-5-A	WOOD_1108	BR	0.036	0.031	0.005	0.051	0.015
O-27-00	O-27-DWF-6/O-27-C-5-A	WOOD_1109	BR	0.013	0.009	0.004	0.015	0.001
O-27-00	O-27-DWF-6/O-27-C-5-A	WOOD_1110	BR	0.030	0.000	0.030	0.045	0.006
O-27-00	O-27-DWF-6/O-27-C-5-A	WOOD_1111	BR	0.024	0.000	0.024	0.035	0.002
O-27-00	O-27-DWF-10/O-27-S-21	WOOD_1112	BR	0.011	0.002	0.009	0.018	0.000
O-27-00	O-27-DWF-10/O-27-S-21	WOOD_1113	BR	0.020	0.000	0.020	0.031	0.000
O-27-00	O-27-DWF-10/O-27-C-18	WOOD_1114	BR	0.010	0.009	0.001	0.014	0.004
O-27-00	O-27-DWF-2/O-27-C-4-B	WOOD_1115	BR	0.018	0.018	0.000	0.020	0.005
O-27-00	O-27-DWF-11/O-27-C-27	WOOD_1116	BR	0.010	0.010	0.000	0.015	0.008
O-27-00	O-27-DWF-11/O-27-C-27	WOOD_1117	BR	0.006	0.006	0.000	0.007	0.000
O-27-00	O-27-DWF-11/O-27-C-27	WOOD_1118	BR	0.003	0.003	0.000	0.006	0.003
O-27-00	O-27-DWF-11/O-27-C-27	WOOD_1119	BR	0.008	0.008	0.000	0.012	0.000
O-27-00	O-27-DWF-17/O-27-C-22-B	WOOD_1120	BR	0.037	0.036	0.001	0.076	0.034
O-27-00	O-27-DWF-17/O-27-C-22-B	WOOD_1121	BR	0.014	0.013	0.001	0.014	0.003
O-27-00	O-27-DWF-17/O-27-C-22-B	WOOD_1122	BR	0.011	0.000	0.011	0.017	0.009
O-27-00	O-27-DWF-17/O-27-C-22-B	WOOD_1123	BR	0.006	0.005	0.001	0.008	0.002
O-27-00	O-27-DWF-17/O-27-C-22-B	WOOD_1124	BR	0.011	0.011	0.000	0.016	0.003
O-27-00	O-27-DWF-18/O-27-C-23	WOOD_1125	BR	0.030	0.028	0.002	0.053	0.006
O-27-00	O-27-DWF-18/O-27-C-23	WOOD_1126	BR	0.010	0.010	0.000	0.013	0.007
O-27-00	O-27-DWF-10/O-27-C-20	WOOD_1127	BR	0.029	0.024	0.005	0.079	0.025
O-27-00	O-27-DWF-10/O-27-C-20	WOOD_1128	BR	0.026	0.021	0.005	0.059	0.027
O-27-00	O-27-DWF-10/O-27-C-20	WOOD_1129	BR	0.010	0.010	0.000	0.014	0.005
O-27-00	O-27-DWF-10/O-27-C-20	WOOD_1130	BR	0.041	0.000	0.041	0.057	0.022
O-27-00	O-27-DWF-18/O-27-C-23	WOOD_1131	BR	0.085	0.056	0.029	0.096	0.033
O-27-00	O-27-DWF-16/O-27-C-14	WOOD_1132	BR	0.030	0.021	0.009	0.061	0.001
O-27-00	O-27-DWF-15/O-27-C-15-B	WOOD_1133	BR	0.009	0.009	0.000	0.019	0.006
O-27-00	O-27-DWF-13/O-27-C-13	WOOD_1134	BR	0.015	0.013	0.002	0.021	0.008

ALCOSAN POC	Model Subcatchment	Concept Municipal Project UID	BMP Type	Concept Municipal Project Area (acres)	Public ROW or Parcel		Concept Municipal Project Individual Drainage Area (acres)*	Concept Municipal Project Individual Project Impervious Drainage Area (acres)*
					Area of Municipal Project in Public ROW (acres)	Area of Municipal Project outside of Public ROW (acres)		
O-27-00	O-27-DWF-13/O-27-C-13	WOOD_1135	BR	0.017	0.017	0.000	0.022	0.005
O-27-00	O-27-DWF-8/O-27-C-9	WOOD_1136	BR	0.007	0.005	0.002	0.008	0.004
O-27-00	O-27-DWF-8/O-27-C-9	WOOD_1137	BR	0.013	0.013	0.000	0.017	0.001
O-27-00	O-27-DWF-8/O-27-C-9	WOOD_1138	BR	0.007	0.007	0.000	0.008	0.003
O-27-00	O-27-DWF-8/O-27-C-9	WOOD_1139	BR	0.005	0.005	0.000	0.005	0.000
O-27-00	O-27-DWF-8/O-27-C-9	WOOD_1140	BR	0.018	0.011	0.007	0.023	0.006
O-27-00	O-27-DWF-8/O-27-C-9	WOOD_1141	BR	0.018	0.018	0.000	0.049	0.020
O-27-00	O-27-DWF-8/O-27-C-9	WOOD_1142	BR	0.092	0.042	0.050	0.146	0.058
O-27-00	O-27-DWF-8/O-27-C-9	WOOD_1143	BR	0.013	0.009	0.004	0.018	0.002
O-27-00	O-27-DWF-8/O-27-C-9	WOOD_1144	BR	0.012	0.010	0.002	0.016	0.005
O-27-00	O-27-DWF-8/O-27-C-9	WOOD_1145	BR	0.012	0.008	0.004	0.019	0.006
O-27-00	O-27-DWF-8/O-27-C-9	WOOD_1146	BR	0.014	0.010	0.004	0.017	0.005
O-27-00	O-27-DWF-8/O-27-C-9	WOOD_1147	BR	0.152	0.128	0.024	0.319	0.099
O-27-00	O-27-DWF-8/O-27-C-9	WOOD_1148	BR	0.011	0.006	0.005	0.013	0.005
O-27-00	O-27-DWF-8/O-27-C-9	WOOD_1149	BR	0.012	0.012	0.000	0.015	0.006
O-27-00	O-27-DWF-8/O-27-C-9	WOOD_1150	BR	0.028	0.027	0.001	0.049	0.025
O-27-00	O-27-DWF-8/O-27-C-9	WOOD_1151	BR	0.037	0.032	0.005	0.058	0.035
O-27-00	O-27-DWF-8/O-27-C-9	WOOD_1152	BR	0.008	0.007	0.001	0.013	0.006
O-27-00	O-27-DWF-8/O-27-C-9	WOOD_1153	BR	0.015	0.013	0.002	0.023	0.011
O-27-00	O-27-DWF-8/O-27-C-9	WOOD_1154	BR	0.022	0.000	0.022	0.033	0.022
O-27-00	O-27-DWF-8/O-27-C-9	WOOD_1155	BR	0.029	0.022	0.007	0.053	0.011
O-27-00	O-27-DWF-8/O-27-C-9	WOOD_1156	BR	0.033	0.029	0.004	0.046	0.001
O-27-00	O-27-DWF-8/O-27-C-9	WOOD_1157	BR	0.033	0.032	0.001	0.037	0.023
O-27-00	O-27-DWF-7/O-27-C-8	WOOD_1158	BR	0.007	0.007	0.000	0.009	0.003
O-27-00	O-27-DWF-7/O-27-C-8	WOOD_1159	BR	0.010	0.006	0.004	0.011	0.000
O-27-00	O-27-DWF-7/O-27-C-8	WOOD_1160	BR	0.015	0.009	0.006	0.019	0.005
O-27-00	O-27-DWF-7/O-27-C-8	WOOD_1161	BR	0.016	0.010	0.006	0.022	0.004
O-27-00	O-27-DWF-8/O-27-C-9	WOOD_1162	BR	0.071	0.018	0.053	0.089	0.024
O-27-00	O-27-DWF-8/O-27-C-9	WOOD_1163	BR	0.010	0.010	0.000	0.017	0.007
O-27-00	O-27-DWF-8/O-27-C-9	WOOD_1164	BR	0.021	0.010	0.011	0.045	0.023
O-27-00	O-27-DWF-8/O-27-C-9	WOOD_1165	BR	0.013	0.013	0.000	0.025	0.007
O-27-00	O-27-DWF-4/O-27-C-7	WOOD_1166	BR	0.035	0.033	0.002	0.070	0.070
O-27-00	O-27-DWF-4/O-27-C-7	WOOD_1167	BR	0.091	0.084	0.007	0.260	0.146
O-27-00	O-27-DWF-4/O-27-C-7	WOOD_1168	BR	0.039	0.019	0.020	0.069	0.026

ALCOSAN POC	Model Subcatchment	Concept Municipal Project UID	BMP Type	Concept Municipal Project Area (acres)	Public ROW or Parcel		Concept Municipal Project Individual Drainage Area (acres)*	Concept Municipal Project Individual Project Impervious Drainage Area (acres)*
					Area of Municipal Project in Public ROW (acres)	Area of Municipal Project outside of Public ROW (acres)		
O-27-00	O-27-DWF-4/O-27-C-7	WOOD_1169	BR	0.020	0.010	0.010	0.036	0.010
O-27-00	O-27-DWF-5/O-27-C-2	WOOD_1170	BR	0.012	0.012	0.000	0.022	0.013
O-27-00	O-27-DWF-3/O-27-C-29	WOOD_1171	BR	0.006	0.003	0.003	0.008	0.001
O-27-00	O-27-DWF-3/O-27-C-29	WOOD_1172	BR	0.014	0.014	0.000	0.021	0.010
O-27-00	O-27-DWF-3/O-27-C-29	WOOD_1173	BR	0.003	0.003	0.000	0.003	0.002
O-27-00	O-27-DWF-3/O-27-C-29	WOOD_1174	BR	0.005	0.005	0.000	0.008	0.004
O-27-00	O-27-DWF-3/O-27-C-29	WOOD_1175	BR	0.027	0.020	0.007	0.056	0.035
O-27-00	O-27-DWF-3/O-27-C-29	WOOD_1176	BR	0.062	0.036	0.026	0.144	0.028
O-27-00	O-27-DWF-2/O-27-C-3	WOOD_1177	BR	0.036	0.021	0.015	0.066	0.026
O-27-00	O-27-DWF-2/O-27-C-3	WOOD_1178	BR	0.008	0.005	0.003	0.012	0.005
O-27-00	O-27-DWF-2/O-27-C-3	WOOD_1179	BR	0.046	0.016	0.030	0.066	0.022
O-27-00	O-27-DWF-2/O-27-C-3	WOOD_1180	BR	0.026	0.025	0.001	0.066	0.030
O-27-00	O-27-DWF-2/O-27-C-3	WOOD_1181	BR	0.014	0.006	0.008	0.023	0.004
O-27-00	O-27-DWF-2/O-27-C-3	WOOD_1182	BR	0.017	0.008	0.009	0.033	0.009
O-27-00	O-27-DWF-2/O-27-C-3	WOOD_1183	BR	0.019	0.011	0.008	0.041	0.014
O-27-00	O-27-DWF-2/O-27-C-3	WOOD_1184	BR	0.062	0.059	0.003	0.223	0.059
O-27-00	O-27-DWF-1/O-27-C-1-B	WOOD_1185	BR	0.044	0.033	0.011	0.093	0.043
O-27-00	O-27-DWF-6/O-27-C-5-B	WOOD_1186	BR	0.012	0.007	0.005	0.019	0.008
O-27-00	O-27-DWF-6/O-27-C-5-B	WOOD_1187	BR	0.008	0.006	0.002	0.011	0.003
O-27-00	O-27-DWF-6/O-27-C-5-B	WOOD_1188	BR	0.067	0.052	0.015	0.132	0.048
O-27-00	O-27-DWF-1/O-27-C-1-B	WOOD_1189	BR	0.014	0.011	0.003	0.020	0.009
O-27-00	O-27-DWF-1/O-27-C-1-B	WOOD_1190	BR	0.007	0.007	0.000	0.011	0.006
O-27-00	O-27-DWF-1/O-27-C-1-B	WOOD_1191	BR	0.013	0.011	0.002	0.023	0.009
O-27-00	O-27-DWF-1/O-27-C-1-B	WOOD_1192	BR	0.055	0.037	0.018	0.097	0.038
O-27-00	O-27-DWF-9/O-27-C-6-A	WOOD_1193	BR	0.007	0.006	0.001	0.011	0.000
O-27-00	O-27-DWF-9/O-27-C-6-A	WOOD_1194	BR	0.008	0.007	0.001	0.010	0.000
O-27-00	O-27-DWF-9/O-27-C-6-A	WOOD_1195	BR	0.018	0.018	0.000	0.022	0.013
O-27-00	O-27-DWF-9/O-27-C-6-A	WOOD_1196	BR	0.012	0.008	0.004	0.016	0.002
O-27-00	O-27-DWF-13/O-27-C-13	WOOD_1197	BR	0.049	0.000	0.049	0.101	0.007
O-27-00	O-27-DWF-15/O-27-C-15-B	WOOD_1198	BR	0.008	0.007	0.001	0.009	0.003
O-27-00	O-27-DWF-16/O-27-C-14	WOOD_1199	BR	0.010	0.010	0.000	0.014	0.009
O-27-00	O-27-DWF-13/O-27-C-13	WOOD_1200	BR	0.010	0.007	0.003	0.014	0.006
O-27-00	O-27-DWF-9/O-27-C-6-A	WOOD_1201	BR	0.011	0.008	0.003	0.014	0.003
O-27-00	O-27-DWF-9/O-27-C-6-A	WOOD_1202	BR	0.025	0.017	0.008	0.041	0.003

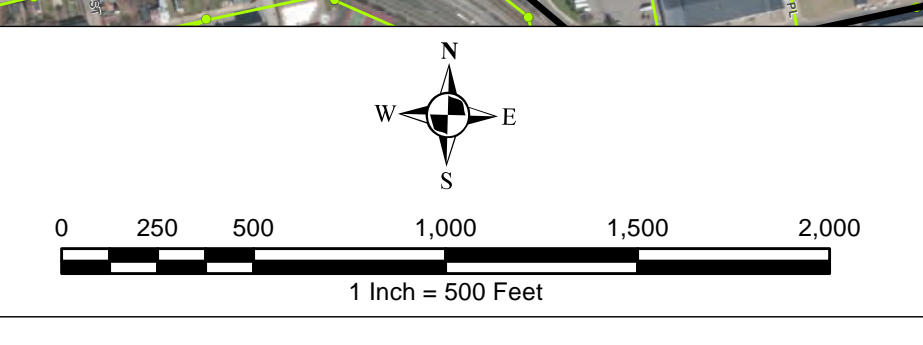
ALCOSAN POC	Model Subcatchment	Concept Municipal Project UID	BMP Type	Concept Municipal Project Area (acres)	Public ROW or Parcel		Concept Municipal Project Individual Drainage Area (acres)*	Concept Municipal Project Individual Project Impervious Drainage Area (acres)*
					Area of Municipal Project in Public ROW (acres)	Area of Municipal Project outside of Public ROW (acres)		
O-27-00	O-27-DWF-8/O-27-C-9	WOOD_1203	BR	0.012	0.012	0.000	0.014	0.006
O-27-00	O-27-DWF-7/O-27-C-8	WOOD_1204	BR	0.005	0.000	0.005	0.006	0.002
O-27-00	O-27-DWF-7/O-27-C-8	WOOD_1205	BR	0.009	0.009	0.000	0.010	0.005
O-27-00	O-27-DWF-2/O-27-C-3	WOOD_1206	BR	0.023	0.020	0.003	0.040	0.020
O-27-00	O-27-DWF-1/O-27-C-1-B	WOOD_1207	BR	0.007	0.005	0.002	0.011	0.003
O-27-00	O-27-DWF-1/O-27-C-1-C	WOOD_1208	BR	0.052	0.000	0.052	0.113	0.074
O-27-00	O-27-DWF-10/O-27-S-21	WOOD_1209	BR	0.006	0.006	0.000	0.007	0.002
O-27-00	O-27-DWF-18/O-27-C-23	WOOD_1210	BR	0.012	0.012	0.000	0.025	0.008
O-27-00	O-27-DWF-17/O-27-S-22-A	WOOD_1211	BR	0.015	0.005	0.010	0.017	0.000
O-27-00	O-27-DWF-18/O-27-C-23	WOOD_1212	BR	0.006	0.006	0.000	0.008	0.000
O-27-00	O-27-DWF-4/O-27-C-7	WOOD_1213	BR	0.024	0.013	0.011	0.030	0.030
O-27-00	O-27-DWF-3/O-27-C-29	WOOD_1214	BR	0.101	0.101	0.000	0.633	0.236
O-27-00	O-27-DWF-6/O-27-C-5-B	WOOD_1215	BR	0.024	0.017	0.007	0.029	0.008
O-27-00	O-27-DWF-15/O-27-C-15-A	WOOD_2001	IB	0.022	0.013	0.009	0.029	0.007
O-27-00	O-27-DWF-10/O-27-C-17	WOOD_2002	IB	0.011	0.004	0.007	0.017	0.002
O-27-00	O-27-DWF-9/O-27-C-6-B	WOOD_2003	IB	0.015	0.010	0.005	0.019	0.004
O-27-00	O-27-DWF-11/O-27-C-27	WOOD_2004	IB	0.030	0.030	0.000	0.040	0.013
O-27-00	O-27-DWF-13/O-27-C-13	WOOD_2005	IB	0.123	0.102	0.021	0.425	0.022
O-27-00	O-27-DWF-8/O-27-C-9	WOOD_2006	IB	0.006	0.000	0.006	0.009	0.001
O-27-00	O-27-DWF-6/O-27-C-5-B	WOOD_5001	CW	0.557	0.028	0.529	0.655	0.279



- ★ ALCOSAN Structures
- ALCOSAN Shallow-Cut Interceptor
- ALCOSAN Deep Tunnel Interceptor
- One Overall Manholes
- One Overall Sewerlines

- Municipal Projects**
- Infiltration Basin
 - Constructed Wetlands
 - Bioretention
 - Permeable Pavement

- State Roads
- Combined Sewer Subcatchment
- Municipal Boundaries



ALCOSAN GSI Project
Woods Run (O-27)
Concept Municipal GSI Projects

P:\FH\1\FRD\34\34\05 ALCOSAN GSI Project\03 - Task 2.1\Figures\WoodRun_ConceptMunicipalGSI.mxd

Woods Run Concept Commercial / Institutional Permeable Pavement, Green Roof, and Special Case GSI Projects: Summary Table

February 21, 2014
Revised October 10, 2014

ALCOSAN POC	Model Subcatchment	Concept Comm / Inst Project UID	BMP Type	Concept Municipal Project Area (acres)	Taxable (acres)	Exempt (acres)	Provisionally Exempt (acres)	Public ROW (acres)
O-27-00	O-27-DWF-14/O-27-C-12	WOOD_6001	CPP	0.344	0.000	0.344	0.000	0.000
O-27-00	O-27-DWF-14/O-27-C-12	WOOD_6002	CPP	0.043	0.000	0.043	0.000	0.000
O-27-00	O-27-DWF-3/O-27-C-29	WOOD_6003	CPP	0.082	0.000	0.082	0.000	0.000
O-27-00	O-27-DWF-5/O-27-C-2	WOOD_6004	CPP	0.201	0.002	0.127	0.000	0.072
O-27-00	O-27-DWF-9/O-27-C-6-A	WOOD_6005	CPP	0.189	0.023	0.123	0.000	0.043
O-27-00	O-27-DWF-2/O-27-C-3	WOOD_6006	CPP	0.041	0.027	0.000	0.000	0.014
O-27-00	O-27-DWF-1/O-27-C-1-B	WOOD_6007	CPP	0.183	0.000	0.181	0.000	0.002
O-27-00	O-27-DWF-8/O-27-C-9	WOOD_6008	CPP	0.140	0.000	0.125	0.000	0.015
O-27-00	O-27-DWF-9/O-27-C-6-A	WOOD_6009	CPP	0.618	0.003	0.152	0.000	0.463
O-27-00	O-27-DWF-4/O-27-C-7	WOOD_6010	CPP	0.184	0.000	0.175	0.000	0.009
O-27-00	O-27-DWF-4/O-27-C-7	WOOD_6011	CPP	0.148	0.016	0.000	0.000	0.132
O-27-00	O-27-DWF-4/O-27-C-7	WOOD_6012	CPP	0.104	0.017	0.000	0.000	0.087
O-27-00	O-27-DWF-4/O-27-C-7	WOOD_6013	CPP	0.174	0.001	0.000	0.000	0.173
O-27-00	O-27-DWF-4/O-27-C-7	WOOD_6014	CPP	0.122	0.000	0.089	0.000	0.033
O-27-00	O-27-DWF-4/O-27-C-7	WOOD_6015	CPP	0.063	0.049	0.000	0.000	0.014
O-27-00	O-27-DWF-14/O-27-C-12	WOOD_6016	CPP	0.189	0.000	0.189	0.000	0.000
O-27-00	O-27-DWF-6/O-27-C-5-A	WOOD_6017	CPP	0.730	0.004	0.714	0.000	0.012
O-27-00	O-27-DWF-6/O-27-C-5-A	WOOD_6018	CPP	0.512	0.000	0.509	0.000	0.003
O-27-00	O-27-DWF-6/O-27-C-5-A	WOOD_6019	CPP	0.074	0.000	0.073	0.000	0.001
O-27-00	O-27-DWF-9/O-27-C-6-C	WOOD_6020	CPP	0.099	0.057	0.000	0.000	0.042
O-27-00	O-27-DWF-4/O-27-C-10	WOOD_6021	CPP	0.033	0.033	0.000	0.000	0.000
O-27-00	O-27-DWF-4/O-27-C-10	WOOD_6022	CPP	0.154	0.154	0.000	0.000	0.000
O-27-00	O-27-DWF-10/O-27-C-19	WOOD_6023	CPP	0.043	0.000	0.043	0.000	0.000
O-27-00	O-27-DWF-15/O-27-C-15-A	WOOD_6024	CPP	0.460	0.092	0.345	0.000	0.023
O-27-00	O-27-DWF-15/O-27-C-15-A	WOOD_6025	CPP	0.044	0.000	0.044	0.000	0.000

ALCOSAN POC	Model Subcatchment	Concept Comm / Inst Project UID	BMP Type	Concept Municipal Project Area (acres)	Taxable (acres)	Exempt (acres)	Provisionally Exempt (acres)	Public ROW (acres)
O-27-00	O-27-DWF-15/O-27-C-15-A	WOOD_6026	CPP	0.072	0.000	0.072	0.000	0.000
O-27-00	O-27-DWF-9/O-27-C-6-B	WOOD_6027	CPP	0.239	0.000	0.239	0.000	0.000
O-27-00	O-27-DWF-9/O-27-C-6-C	WOOD_6028	CPP	0.058	0.001	0.000	0.000	0.057
O-27-00	O-27-DWF-2/O-27-C-28	WOOD_6029	CPP	0.039	0.002	0.000	0.000	0.037
O-27-00	O-27-DWF-1/O-27-C-1-A	WOOD_6030	CPP	0.639	0.343	0.000	0.013	0.283
O-27-00	O-27-DWF-1/O-27-C-1-A	WOOD_6031	CPP	0.804	0.000	0.453	0.000	0.351
O-27-00	O-27-DWF-1/O-27-C-1-A	WOOD_6032	CPP	0.298	0.298	0.000	0.000	0.000
O-27-00	O-27-DWF-1/O-27-C-1-A	WOOD_6033	CPP	0.399	0.399	0.000	0.000	0.000
O-27-00	O-27-DWF-1/O-27-C-1-A	WOOD_6034	CPP	0.475	0.475	0.000	0.000	0.000
O-27-00	O-27-DWF-1/O-27-C-1-A	WOOD_6035	CPP	0.646	0.121	0.000	0.000	0.525
O-27-00	O-27-DWF-1/O-27-C-1-A	WOOD_6036	CPP	0.411	0.033	0.378	0.000	0.000
O-27-00	O-27-DWF-12/O-27-C-25	WOOD_6037	CPP	0.140	0.000	0.069	0.000	0.071
O-27-00	O-27-DWF-4/O-27-C-7	WOOD_6038	CPP	0.075	0.000	0.075	0.000	0.000
O-27-00	O-27-DWF-6/O-27-C-5-A	WOOD_6039	CPP	0.251	0.018	0.132	0.000	0.101
O-27-00	O-27-DWF-4/O-27-C-10	WOOD_7001	GR	0.206	0.206	0.000	0.000	0.000
O-27-00	O-27-DWF-9/O-27-C-6-A	WOOD_7002	GR	0.608	0.608	0.000	0.000	0.000
O-27-00	O-27-DWF-15/O-27-C-15-A	WOOD_7003	GR	0.463	0.000	0.463	0.000	0.000
O-27-00	O-27-DWF-9/O-27-C-6-C	WOOD_7004	GR	0.168	0.078	0.000	0.000	0.090
O-27-00	O-27-DWF-4/O-27-C-7	WOOD_7005	GR	0.166	0.166	0.000	0.000	0.000
O-27-00	O-27-DWF-15/O-27-C-15-A	WOOD_7006	GR	0.181	0.000	0.181	0.000	0.000
O-27-00	O-27-DWF-12/O-27-C-25	WOOD_7007	GR	0.476	0.000	0.473	0.000	0.003
O-27-00	O-27-DWF-9/O-27-C-6-B	WOOD_7008	GR	0.131	0.042	0.000	0.000	0.089
O-27-00	O-27-DWF-9/O-27-C-6-C	WOOD_7009	GR	0.198	0.192	0.000	0.000	0.006
O-27-00	O-27-DWF-1/O-27-C-1-B	WOOD_7010	GR	0.130	0.130	0.000	0.000	0.000
O-27-00	O-27-DWF-9/O-27-C-6-C	WOOD_7011	GR	0.224	0.000	0.224	0.000	0.000
O-27-00	O-27-DWF-1/O-27-C-1-A	WOOD_7012	GR	0.687	0.663	0.000	0.000	0.024
O-27-00	O-27-DWF-1/O-27-C-1-B	WOOD_7013	GR	0.177	0.177	0.000	0.000	0.000
O-27-00	O-27-DWF-6/O-27-C-5-A	WOOD_7014	GR	0.188	0.000	0.188	0.000	0.000
O-27-00	O-27-DWF-1/O-27-C-1-B	WOOD_7015	GR	0.294	0.000	0.294	0.000	0.000
O-27-00	O-27-DWF-14/O-27-C-12	WOOD_7016	GR	0.367	0.000	0.367	0.000	0.000

ALCOSAN POC	Model Subcatchment	Concept Comm / Inst Project UID	BMP Type	Concept Municipal Project Area (acres)	Taxable (acres)	Exempt (acres)	Provisionally Exempt (acres)	Public ROW (acres)
O-27-00	O-27-DWF-9/O-27-C-6-C	WOOD_7017	GR	0.593	0.591	0.000	0.000	0.002
O-27-00	O-27-DWF-1/O-27-C-1-A	WOOD_7018	GR	0.204	0.204	0.000	0.000	0.000
O-27-00	O-27-DWF-1/O-27-C-1-A	WOOD_7019	GR	0.260	0.005	0.255	0.000	0.000
O-27-00	O-27-DWF-1/O-27-C-1-A	WOOD_7020	GR	0.137	0.000	0.137	0.000	0.000
O-27-00	O-27-DWF-1/O-27-C-1-A	WOOD_7021	GR	1.099	1.099	0.000	0.000	0.000
O-27-00	O-27-DWF-6/O-27-C-5-A	WOOD_7022	GR	0.341	0.000	0.340	0.000	0.001
O-27-00	O-27-DWF-1/O-27-C-1-B	WOOD_8001	SRPP	1.251	0.000	0.000	0.000	1.251
O-27-00	O-27-DWF-2/O-27-C-4-A	WOOD_8002	SRPP	0.460	0.000	0.000	0.000	0.460
O-27-00	O-27-DWF-8/O-27-C-9	WOOD_8003	SRPP	0.969	0.000	0.000	0.000	0.969
O-27-00	O-27-DWF-10/O-27-C-19	WOOD_8004	SRPP	0.402	0.000	0.000	0.000	0.402
O-27-00	O-27-DWF-10/O-27-C-20	WOOD_8005	SRPP	0.674	0.000	0.000	0.000	0.674
O-27-00	O-27-DWF-18/O-27-C-23	WOOD_8006	SRPP	0.240	0.000	0.000	0.000	0.240
O-27-00	O-27-DWF-15/O-27-C-15-A	WOOD_8007	SRPP	0.694	0.000	0.000	0.000	0.694
O-27-00	O-27-DWF-15/O-27-C-15-A	WOOD_8008	SRPP	0.133	0.000	0.000	0.000	0.133
O-27-00	O-27-DWF-9/O-27-C-6-C	WOOD_8009	SRPP	0.507	0.000	0.000	0.000	0.507
O-27-00	O-27-DWF-10/O-27-C-16	WOOD_8010	SRPP	0.191	0.000	0.000	0.000	0.191
O-27-00	O-27-DWF-4/O-27-C-7	WOOD_8011	SRPP	0.217	0.011	0.000	0.000	0.206

