

## 5.26 Study Area 26 – Lower Northern Allegheny

These findings apply to ALCOSAN Points of Connection A-58 through A-66 (excluding A-60), which include combined sewer systems in the City of Pittsburgh.

### Lower Northern Allegheny - BMP GIS Features

The SUSTAIN BMP siting tool analysis resulted in identification of a total of 5,669 BMP GIS Features covering 352 acres, which consisted of the following:

**Table 5.26-1 - TOTAL SUSTAIN BMP Features Output**

<b>SUSTAIN BMP Feature Type</b>	<b>Number of Features</b>	<b>Area of BMP Features (Acres)</b>
Permeable Pavement	1,634	107
Bioretention	2,005	109
Infiltration Basin/Trenches	212	12
Vegetated Filter Strips	696	82
Grass Swales	985	38
Constructed Wetlands	137	3

Locations of all identified BMP GIS features are presented on the SUSTAIN BMP Features Figure.

Lower Northern Allegheny - Concept Municipal GSI Projects

Based on the BMP features, 202 concept Municipal GSI Projects were identified covering 17 total acres with a corresponding drainage area delineation of 47 total acres and consisted of the following:

**Table 5.26-2 - Summary of Identified Concept Municipal GSI Projects**

<b>Concept GSI Technology</b>	<b>Number of Projects</b>	<b>GSI Project Area (Acres)</b>	<b>Project Drainage Area (Acres)</b>
Permeable Pavement	44	11	34
Bioretention	147	6	11
Infiltration Basin/Trenches	1	< 1	< 1
Vegetated Filter Strips	9	< 1	1
Grass Swales	1	< 1	< 1
Constructed Wetlands	0	0	0

Project statistics including ALCOSAN POC, model subcatchment, BMP type, project area, area of project inside and outside of the public right-of-way, tributary drainage area, and tributary impervious drainage area are provided in the Concept Municipal Projects Table. Locations of all identified Concept Municipal GSI projects are presented in the Concept Municipal GSI Projects Figure (1) and the corresponding delineated tributary drainage areas are presented by BMP in the Individual Project Drainage Area Figures (5).

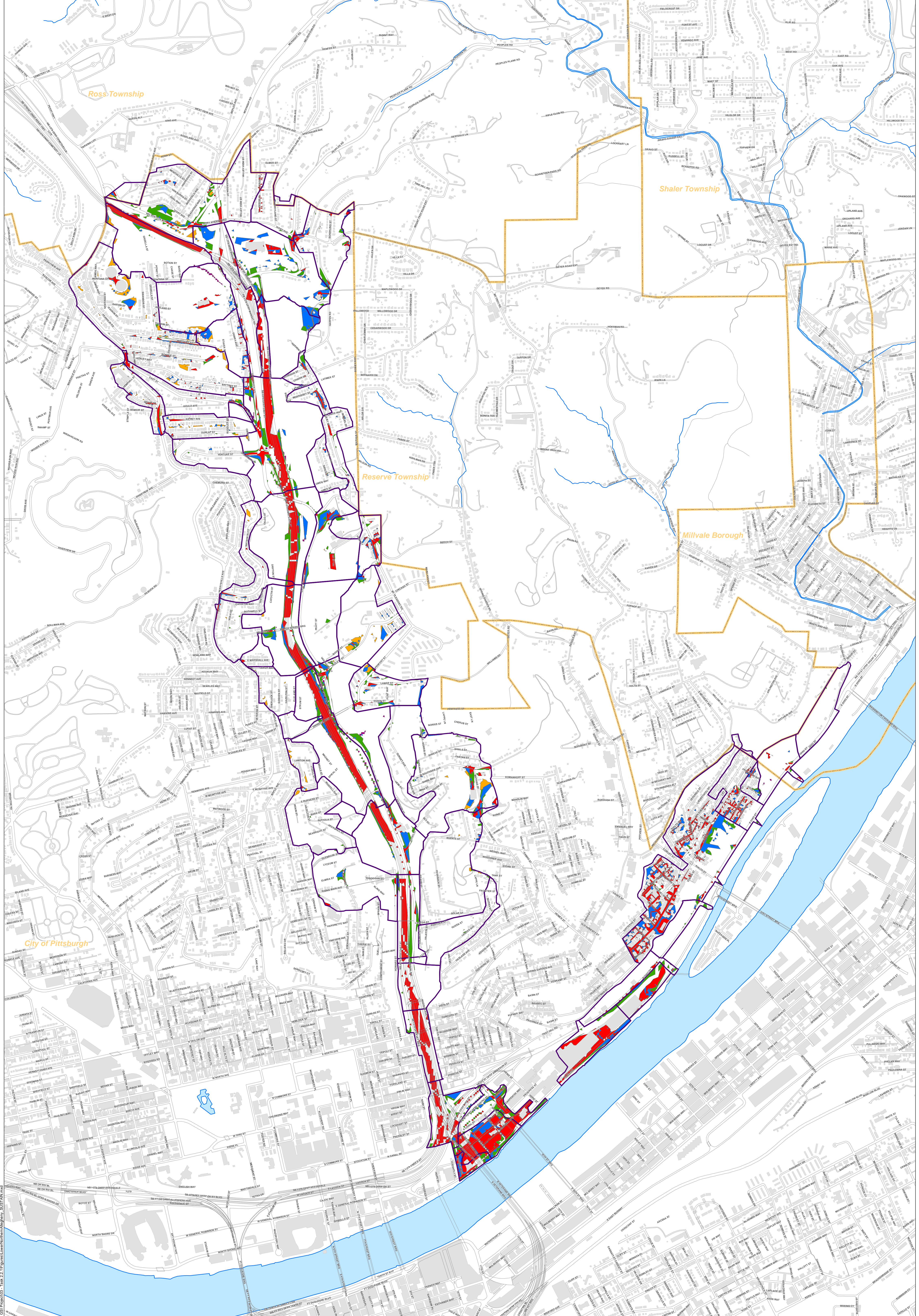
Lower Northern Allegheny - Concept Commercial/Institutional and Special Case GSI Projects

Based on the BMP features, 112 concept Commercial/Institutional and Special Case GSI Projects were identified covering 115 total acres and consisted of the following:

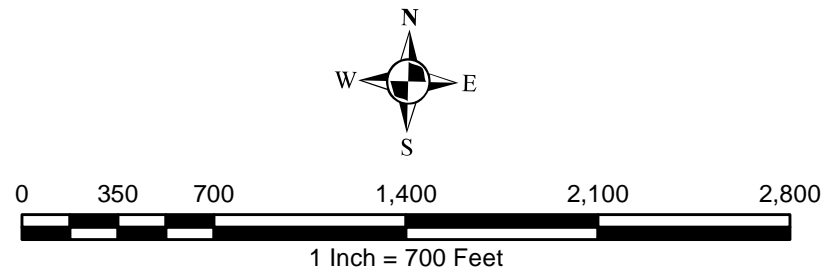
**Table 5.26-3 - Summary of Identified Concept Commercial/Institutional and Special Case GSI Projects**

<b>Concept GSI Technology or Special Case Project Category</b>	<b>Number of Projects</b>	<b>GSI Project Area (Acres)</b>
Commercial/Institutional Permeable Pavement	39	14
Commercial/Institutional Green Roofs	23	13
State Route Permeable Pavement	50	88
Busway Permeable Pavement	0	0
Busway Bioretention	0	0

Project statistics including ALCOSAN POC, model subcatchment, BMP type, project area, area of project taxable, exempt, provisionally exempt and in the public right-of-way are provided in Concept Commercial / Institutional GSI Projects Table. Locations of all identified Concept Commercial / Institutional GSI projects are presented in the Concept Commercial / Institutional GSI Projects Figure (1).



- Permeable Pavement
- Vegetated Filter Strips
- Combined Sewer Subcatchment
- Bioretention Basin
- Grass Swales
- Municipal Boundaries
- Infiltration Basin / Trench
- Constructed Wetlands



**ALCOSAN GSI Project**  
**Lower Northern Allegheny (A-58 thru A-66)**  
**SUSTAIN BMP Features**

P:\m\INPROJ\343405\_ALCOSAN\_GSI\_Project\03 - Task 2.1\Figures\LowerNorthernAllegheny\_SUSTAIN.mxd

## Lower Northern Allegheny Concept Municipal Projects

June 16, 2014

Revised October 7, 2014

\*Note: The drainage area presented in this table is representative of the individual drainage area tributary to each concept municipal project without any revisions to account for overlap, without engineering judgment revisions applied, and without the drainage areas being clipped to their corresponding model subcatchments.

ALCOSAN POC	Model Subcatchment	Concept Municipal Project UID	BMP Type	Concept Municipal Project Area (acres)	Public ROW or Parcel		Concept Municipal Project Individual Drainage Area (acres)*	Concept Municipal Project Individual Project Impervious Drainage Area (acres)*
					Area of Municipal Project in Public ROW (acres)	Area of Municipal Project outside of Public ROW (acres)		
A-65	A-65-00	LNA_1	PP	0.059	0.059	0.000	0.136	0.091
A-66	A-66-00-JCT3	LNA_2	PP	0.105	0.104	0.001	0.271	0.131
A-65	A-65-00	LNA_3	PP	0.813	0.810	0.003	5.040	2.620
A-64	A-64-00	LNA_4	PP	0.070	0.070	0.000	0.315	0.200
A-64	A-64-00	LNA_5	PP	0.101	0.101	0.000	0.315	0.175
A-64	A-64-00	LNA_6	PP	0.388	0.388	0.000	2.183	1.228
A-64	A-64-00	LNA_7	PP	0.144	0.144	0.000	0.355	0.245
A-64	A-64-00	LNA_8	PP	0.516	0.505	0.011	1.362	0.775
A-64	A-64-00	LNA_9	PP	0.179	0.179	0.000	0.644	0.351
A-64	A-64-00	LNA_10	PP	0.381	0.381	0.000	1.581	0.799
A-64	A-64-00	LNA_11	PP	0.192	0.192	0.000	0.461	0.241
A-64	A-64-00	LNA_12	PP	0.317	0.317	0.000	0.969	0.499
A-64	A-64-00	LNA_13	PP	0.173	0.173	0.000	0.972	0.382
A-64	A-64-00	LNA_14	PP	0.195	0.180	0.015	1.006	0.476
A-64	A-64-00	LNA_15	PP	0.192	0.178	0.014	0.474	0.195
A-59Z	A-59-DWF-1/A-59-C-1	LNA_16	PP	0.204	0.195	0.009	1.388	1.379
A-59	A-59A-DWF-1/A-59A-C-1	LNA_17	PP	0.599	0.588	0.011	2.917	2.675
A-58	A-58-DWF-2/A-58-C-46	LNA_18	PP	0.149	0.147	0.002	0.427	0.388
A-58	A-58-DWF-1/A-58-C-1	LNA_19	PP	0.338	0.322	0.016	1.046	0.487
A-58	A-58-DWF-5/A-58-C-34	LNA_20	PP	0.084	0.084	0.000	0.108	0.086
A-58	A-58-DWF-7/A-58-C-32	LNA_21	PP	0.153	0.153	0.000	0.194	0.139
A-58	A-58-DWF-7/A-58-C-32	LNA_22	PP	0.376	0.376	0.000	0.674	0.417
A-58	A-58-DWF-8/A-58-C-33-A	LNA_23	PP	0.198	0.055	0.143	0.325	0.200
A-59Z	A-59-DWF-1/A-59-C-1	LNA_24	PP	0.040	0.040	0.000	0.090	0.043
A-59Z	A-59-DWF-1/A-59-C-1	LNA_25	PP	0.042	0.042	0.000	0.045	0.045
A-64	A-64-00	LNA_26	PP	0.086	0.086	0.000	0.226	0.131
A-59	A-59A-DWF-1/A-59A-C-1	LNA_27	PP	0.115	0.108	0.007	0.682	0.225
A-59	A-59A-DWF-1/A-59A-C-1	LNA_28	PP	0.808	0.754	0.054	3.337	3.248

ALCOSAN POC	Model Subcatchment	Concept Municipal Project UID	BMP Type	Concept Municipal Project Area (acres)	Public ROW or Parcel		Concept Municipal Project Individual Drainage Area (acres)*	Concept Municipal Project Individual Project Impervious Drainage Area (acres)*
					Area of Municipal Project in Public ROW (acres)	Area of Municipal Project outside of Public ROW (acres)		
A-58	A-58-DWF-29/A-58-C-11	LNA__29	PP	0.657	0.499	0.158	0.676	0.639
A-58	A-58-DWF-29/A-58-C-11	LNA__30	PP	0.186	0.182	0.004	0.433	0.224
A-58	A-58-DWF-31/A-58-C-6	LNA__31	PP	0.172	0.172	0.000	0.205	0.155
A-58	A-58-DWF-30/A-58-C-5	LNA__32	PP	0.052	0.052	0.000	0.134	0.063
A-58	A-58-DWF-30/A-58-C-5	LNA__33	PP	0.126	0.125	0.001	0.289	0.134
A-58	A-58-DWF-28/A-58-C-7	LNA__34	PP	0.104	0.086	0.018	0.117	0.102
A-58	A-58-DWF-26/A-58-C-13	LNA__35	PP	0.592	0.592	0.000	1.517	0.676
A-58	A-58-DWF-23/A-58-C-15	LNA__36	PP	0.281	0.281	0.000	0.371	0.310
A-58	A-58-GWI-16/A-58-C-36	LNA__37	PP	0.280	0.268	0.012	0.407	0.292
A-58	A-58-DWF-18/A-58-C-17	LNA__38	PP	0.360	0.360	0.000	0.767	0.407
A-58	A-58-GWI-16/A-58-C-39	LNA__39	PP	0.141	0.141	0.000	0.153	0.118
A-58	A-58-DWF-20/A-58-C-29	LNA__40	PP	0.081	0.000	0.081	0.143	0.094
A-58	A-58-DWF-20/A-58-C-29	LNA__41	PP	0.151	0.078	0.073	0.355	0.194
A-58	A-58-DWF-25/A-58-C-27	LNA__42	PP	0.255	0.193	0.062	0.420	0.252
A-58	A-58-DWF-27/A-58-C-25	LNA__43	PP	0.131	0.131	0.000	0.201	0.122
A-58	A-58-GWI-16/A-58-C-36	LNA__44	PP	0.236	0.234	0.002	0.730	0.350
A-64	A-64-00	LNA__1001	BR	0.013	0.013	0.000	0.041	0.016
A-64	A-64-00	LNA__1002	BR	0.005	0.004	0.001	0.009	0.000
A-64	A-64-00	LNA__1003	BR	0.019	0.017	0.002	0.028	0.015
A-64	A-64-00	LNA__1004	BR	0.013	0.004	0.009	0.024	0.000
A-64	A-64-00	LNA__1005	BR	0.013	0.005	0.008	0.020	0.000
A-64	A-64-00	LNA__1006	BR	0.017	0.006	0.011	0.023	0.010
A-64	A-64-00	LNA__1007	BR	0.017	0.011	0.006	0.029	0.008
A-64	A-64-00	LNA__1008	BR	0.035	0.034	0.001	0.064	0.015
A-64	A-64-00	LNA__1009	BR	0.012	0.006	0.006	0.022	0.000
A-59	A-59A-DWF-1/A-59A-C-1	LNA__1010	BR	0.265	0.035	0.230	0.408	0.168
A-59	A-59A-DWF-1/A-59A-C-1	LNA__1011	BR	0.158	0.026	0.132	0.269	0.089
A-59	A-59A-DWF-1/A-59A-C-1	LNA__1012	BR	0.067	0.015	0.052	0.303	0.081
A-59	A-59A-DWF-1/A-59A-C-1	LNA__1013	BR	0.134	0.028	0.106	0.196	0.006
A-59	A-59A-DWF-1/A-59A-C-1	LNA__1014	BR	0.022	0.015	0.007	0.058	0.012
A-59	A-59A-DWF-1/A-59A-C-1	LNA__1015	BR	0.049	0.043	0.006	0.122	0.109
A-58	A-58-DWF-1/A-58-C-1	LNA__1016	BR	0.051	0.046	0.005	0.092	0.006
A-58	A-58-DWF-1/A-58-C-1	LNA__1017	BR	0.046	0.003	0.043	0.049	0.049
A-59Z	A-59-DWF-1/A-59-C-1	LNA__1018	BR	0.141	0.113	0.028	0.582	0.114

ALCOSAN POC	Model Subcatchment	Concept Municipal Project UID	BMP Type	Concept Municipal Project Area (acres)	Public ROW or Parcel		Concept Municipal Project Individual Drainage Area (acres)*	Concept Municipal Project Individual Project Impervious Drainage Area (acres)*
					Area of Municipal Project in Public ROW (acres)	Area of Municipal Project outside of Public ROW (acres)		
A-58	A-58-GWI-3/A-58-C-44	LNA__1019	BR	0.083	0.010	0.073	0.118	0.009
A-58	A-58-DWF-6/A-58-C-24	LNA__1020	BR	0.058	0.016	0.042	0.066	0.016
A-58	A-58-DWF-6/A-58-C-24	LNA__1021	BR	0.030	0.008	0.022	0.033	0.010
A-58	A-58-DWF-6/A-58-C-24	LNA__1022	BR	0.012	0.000	0.012	0.017	0.006
A-58	A-58-GWI-3/A-58-C-43	LNA__1023	BR	0.167	0.167	0.000	0.238	0.034
A-58	A-58-GWI-3/A-58-C-43	LNA__1024	BR	0.046	0.046	0.000	0.143	0.021
A-58	A-58-DWF-10/A-58-C-22	LNA__1025	BR	0.002	0.001	0.001	0.003	0.001
A-58	A-58-DWF-11/A-58-C-42	LNA__1026	BR	0.021	0.021	0.000	0.031	0.008
A-58	A-58-DWF-11/A-58-C-42	LNA__1027	BR	0.020	0.020	0.000	0.030	0.009
A-58	A-58-DWF-11/A-58-C-42	LNA__1028	BR	0.027	0.027	0.000	0.038	0.012
A-58	A-58-DWF-11/A-58-C-42	LNA__1029	BR	0.028	0.028	0.000	0.069	0.031
A-58	A-58-DWF-11/A-58-C-42	LNA__1030	BR	0.056	0.056	0.000	0.132	0.028
A-58	A-58-DWF-11/A-58-C-40	LNA__1031	BR	0.031	0.031	0.000	0.034	0.015
A-58	A-58-DWF-11/A-58-C-42	LNA__1032	BR	0.047	0.043	0.004	0.073	0.013
A-58	A-58-DWF-11/A-58-C-42	LNA__1033	BR	0.022	0.022	0.000	0.030	0.003
A-58	A-58-DWF-8/A-58-C-33-A	LNA__1034	BR	0.009	0.009	0.000	0.019	0.012
A-58	A-58-DWF-8/A-58-C-33-A	LNA__1035	BR	0.030	0.023	0.007	0.036	0.020
A-58	A-58-DWF-8/A-58-C-33-A	LNA__1036	BR	0.013	0.010	0.003	0.016	0.008
A-58	A-58-DWF-8/A-58-C-33-A	LNA__1037	BR	0.005	0.005	0.000	0.007	0.000
A-58	A-58-DWF-8/A-58-C-33-A	LNA__1038	BR	0.013	0.003	0.010	0.014	0.003
A-58	A-58-DWF-7/A-58-C-32	LNA__1039	BR	0.005	0.003	0.002	0.009	0.000
A-58	A-58-DWF-7/A-58-C-32	LNA__1040	BR	0.015	0.012	0.003	0.030	0.010
A-58	A-58-DWF-7/A-58-C-32	LNA__1041	BR	0.021	0.021	0.000	0.032	0.009
A-58	A-58-DWF-7/A-58-C-32	LNA__1042	BR	0.045	0.044	0.001	0.069	0.015
A-58	A-58-DWF-5/A-58-C-34	LNA__1043	BR	0.027	0.022	0.005	0.043	0.007
A-58	A-58-DWF-5/A-58-C-34	LNA__1044	BR	0.016	0.012	0.004	0.023	0.001
A-64	A-64-00	LNA__1045	BR	0.031	0.019	0.012	0.043	0.013
A-66	A-66-00-JCT3	LNA__1046	BR	0.020	0.019	0.001	0.031	0.006
A-65	A-65-00	LNA__1047	BR	0.023	0.002	0.021	0.025	0.007
A-65	A-65-00	LNA__1048	BR	0.006	0.006	0.000	0.011	0.002
A-65	A-65-00	LNA__1049	BR	0.016	0.012	0.004	0.022	0.004
A-64	A-64-00	LNA__1050	BR	0.010	0.006	0.004	0.013	0.004
A-64	A-64-00	LNA__1051	BR	0.011	0.005	0.006	0.018	0.004
A-64	A-64-00	LNA__1052	BR	0.009	0.007	0.002	0.010	0.003

ALCOSAN POC	Model Subcatchment	Concept Municipal Project UID	BMP Type	Concept Municipal Project Area (acres)	Public ROW or Parcel		Concept Municipal Project Individual Drainage Area (acres)*	Concept Municipal Project Individual Project Impervious Drainage Area (acres)*
					Area of Municipal Project in Public ROW (acres)	Area of Municipal Project outside of Public ROW (acres)		
A-59Z	A-59-DWF-1/A-59-C-1	LNA__1053	BR	0.009	0.007	0.002	0.012	0.012
A-58	A-58-DWF-29/A-58-C-11	LNA__1054	BR	0.004	0.002	0.002	0.004	0.000
A-58	A-58-DWF-29/A-58-C-11	LNA__1055	BR	0.024	0.020	0.004	0.029	0.012
A-58	A-58-DWF-29/A-58-C-11	LNA__1056	BR	0.013	0.000	0.013	0.018	0.005
A-58	A-58-DWF-29/A-58-C-11	LNA__1057	BR	0.083	0.050	0.033	0.149	0.091
A-58	A-58-DWF-29/A-58-C-11	LNA__1058	BR	0.021	0.021	0.000	0.030	0.011
A-58	A-58-DWF-29/A-58-C-11	LNA__1059	BR	0.045	0.045	0.000	0.085	0.063
A-58	A-58-DWF-29/A-58-C-11	LNA__1060	BR	0.077	0.077	0.000	0.105	0.034
A-58	A-58-DWF-29/A-58-C-11	LNA__1061	BR	0.008	0.008	0.000	0.010	0.004
A-58	A-58-DWF-29/A-58-C-11	LNA__1062	BR	0.010	0.010	0.000	0.018	0.010
A-58	A-58-DWF-29/A-58-C-11	LNA__1063	BR	0.013	0.013	0.000	0.017	0.004
A-58	A-58-DWF-31/A-58-C-6	LNA__1064	BR	0.015	0.005	0.010	0.016	0.004
A-58	A-58-DWF-31/A-58-C-6	LNA__1065	BR	0.031	0.031	0.000	0.042	0.012
A-58	A-58-DWF-30/A-58-C-5	LNA__1066	BR	0.041	0.041	0.000	0.098	0.048
A-58	A-58-DWF-30/A-58-C-5	LNA__1067	BR	0.002	0.002	0.000	0.003	0.001
A-58	A-58-DWF-30/A-58-C-5	LNA__1068	BR	0.051	0.043	0.008	0.109	0.054
A-58	A-58-DWF-28/A-58-C-7	LNA__1069	BR	0.029	0.029	0.000	0.035	0.010
A-58	A-58-DWF-28/A-58-C-7	LNA__1070	BR	0.049	0.049	0.000	0.086	0.033
A-58	A-58-DWF-28/A-58-C-7	LNA__1071	BR	0.036	0.036	0.000	0.042	0.020
A-58	A-58-DWF-28/A-58-C-7	LNA__1072	BR	0.006	0.006	0.000	0.007	0.002
A-58	A-58-DWF-28/A-58-C-7	LNA__1073	BR	0.009	0.009	0.000	0.011	0.001
A-58	A-58-DWF-28/A-58-C-7	LNA__1074	BR	0.030	0.030	0.000	0.033	0.003
A-58	A-58-DWF-28/A-58-C-12	LNA__1075	BR	0.036	0.036	0.000	0.108	0.044
A-58	A-58-DWF-28/A-58-C-12	LNA__1076	BR	0.030	0.030	0.000	0.032	0.000
A-58	A-58-DWF-28/A-58-C-8	LNA__1077	BR	0.052	0.050	0.002	0.078	0.028
A-58	A-58-DWF-26/A-58-C-13	LNA__1078	BR	0.008	0.000	0.008	0.012	0.003
A-58	A-58-DWF-26/A-58-C-13	LNA__1079	BR	0.021	0.019	0.002	0.026	0.009
A-58	A-58-DWF-26/A-58-C-13	LNA__1080	BR	0.015	0.012	0.003	0.020	0.006
A-58	A-58-DWF-26/A-58-C-13	LNA__1081	BR	0.015	0.015	0.000	0.020	0.008
A-58	A-58-DWF-26/A-58-C-13	LNA__1082	BR	0.008	0.008	0.000	0.009	0.003
A-58	A-58-DWF-26/A-58-C-13	LNA__1083	BR	0.016	0.016	0.000	0.020	0.005
A-58	A-58-DWF-26/A-58-C-13	LNA__1084	BR	0.015	0.012	0.003	0.019	0.006
A-58	A-58-DWF-26/A-58-C-13	LNA__1085	BR	0.051	0.041	0.010	0.070	0.028
A-58	A-58-DWF-26/A-58-C-13	LNA__1086	BR	0.016	0.013	0.003	0.021	0.009



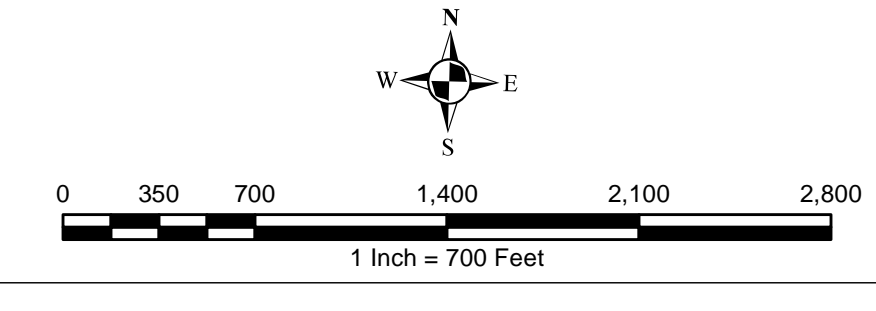
ALCOSAN POC	Model Subcatchment	Concept Municipal Project UID	BMP Type	Concept Municipal Project Area (acres)	Public ROW or Parcel		Concept Municipal Project Individual Drainage Area (acres)*	Concept Municipal Project Individual Project Impervious Drainage Area (acres)*
					Area of Municipal Project in Public ROW (acres)	Area of Municipal Project outside of Public ROW (acres)		
A-58	A-58-DWF-26/A-58-C-13	LNA__1087	BR	0.006	0.004	0.002	0.007	0.002
A-58	A-58-DWF-26/A-58-C-13	LNA__1088	BR	0.007	0.005	0.002	0.009	0.002
A-58	A-58-DWF-26/A-58-C-13	LNA__1089	BR	0.005	0.005	0.000	0.006	0.003
A-58	A-58-DWF-26/A-58-C-13	LNA__1090	BR	0.005	0.004	0.001	0.007	0.002
A-58	A-58-DWF-26/A-58-C-13	LNA__1091	BR	0.005	0.003	0.002	0.006	0.002
A-58	A-58-GWI-16/A-58-C-36	LNA__1092	BR	0.014	0.008	0.006	0.017	0.002
A-58	A-58-GWI-16/A-58-C-36	LNA__1093	BR	0.098	0.098	0.000	0.126	0.012
A-58	A-58-GWI-16/A-58-C-36	LNA__1094	BR	0.041	0.037	0.004	0.079	0.024
A-58	A-58-GWI-16/A-58-C-36	LNA__1095	BR	0.034	0.034	0.000	0.045	0.018
A-58	A-58-GWI-16/A-58-C-36	LNA__1096	BR	0.041	0.041	0.000	0.064	0.026
A-58	A-58-GWI-16/A-58-C-36	LNA__1097	BR	0.012	0.012	0.000	0.014	0.004
A-58	A-58-GWI-16/A-58-C-36	LNA__1098	BR	0.020	0.015	0.005	0.031	0.013
A-58	A-58-GWI-16/A-58-C-36	LNA__1099	BR	0.045	0.045	0.000	0.050	0.032
A-58	A-58-GWI-16/A-58-C-36	LNA__1100	BR	0.071	0.065	0.006	0.120	0.087
A-58	A-58-GWI-16/A-58-C-36	LNA__1101	BR	0.012	0.012	0.000	0.016	0.003
A-58	A-58-GWI-16/A-58-C-36	LNA__1102	BR	0.080	0.080	0.000	0.264	0.131
A-58	A-58-DWF-32/A-58-C-45-B	LNA__1103	BR	0.008	0.006	0.002	0.010	0.001
A-58	A-58-DWF-32/A-58-C-45-B	LNA__1104	BR	0.037	0.023	0.014	0.039	0.006
A-58	A-58-DWF-32/A-58-C-45-B	LNA__1105	BR	0.010	0.010	0.000	0.012	0.005
A-58	A-58-DWF-32/A-58-C-45-A	LNA__1106	BR	0.005	0.003	0.002	0.005	0.001
A-58	A-58-DWF-32/A-58-C-45-A	LNA__1107	BR	0.004	0.003	0.001	0.005	0.001
A-58	A-58-DWF-32/A-58-C-45-A	LNA__1108	BR	0.040	0.032	0.008	0.075	0.024
A-58	A-58-DWF-22/A-58-C-16	LNA__1109	BR	0.010	0.008	0.002	0.016	0.011
A-58	A-58-DWF-27/A-58-C-25	LNA__1110	BR	0.064	0.048	0.016	0.083	0.016
A-58	A-58-DWF-27/A-58-C-25	LNA__1111	BR	0.010	0.007	0.003	0.012	0.005
A-58	A-58-DWF-25/A-58-C-27	LNA__1112	BR	0.014	0.000	0.014	0.025	0.010
A-58	A-58-DWF-25/A-58-C-27	LNA__1113	BR	0.023	0.023	0.000	0.028	0.005
A-58	A-58-DWF-25/A-58-C-27	LNA__1114	BR	0.030	0.000	0.030	0.038	0.010
A-58	A-58-DWF-25/A-58-C-27	LNA__1115	BR	0.053	0.053	0.000	0.091	0.027
A-58	A-58-DWF-20/A-58-C-29	LNA__1116	BR	0.008	0.008	0.000	0.010	0.002
A-58	A-58-DWF-20/A-58-C-29	LNA__1117	BR	0.009	0.009	0.000	0.013	0.001
A-58	A-58-DWF-20/A-58-C-29	LNA__1118	BR	0.003	0.000	0.003	0.005	0.001
A-58	A-58-DWF-20/A-58-C-29	LNA__1119	BR	0.015	0.015	0.000	0.026	0.010
A-58	A-58-DWF-21/A-58-C-28	LNA__1120	BR	0.011	0.010	0.001	0.017	0.004

ALCOSAN POC	Model Subcatchment	Concept Municipal Project UID	BMP Type	Concept Municipal Project Area (acres)	Public ROW or Parcel		Concept Municipal Project Individual Drainage Area (acres)*	Concept Municipal Project Individual Project Impervious Drainage Area (acres)*
					Area of Municipal Project in Public ROW (acres)	Area of Municipal Project outside of Public ROW (acres)		
A-58	A-58-DWF-21/A-58-C-28	LNA__1121	BR	0.004	0.004	0.000	0.006	0.002
A-58	A-58-DWF-11/A-58-C-37	LNA__1122	BR	0.158	0.158	0.000	0.175	0.029
A-58	A-58-DWF-11/A-58-C-37	LNA__1123	BR	0.065	0.014	0.051	0.092	0.025
A-58	A-58-DWF-20/A-58-C-29	LNA__1124	BR	0.010	0.000	0.010	0.014	0.006
A-58	A-58-DWF-20/A-58-C-29	LNA__1125	BR	0.067	0.000	0.067	0.145	0.030
A-58	A-58-DWF-18/A-58-C-17	LNA__1126	BR	0.006	0.003	0.003	0.009	0.002
A-58	A-58-DWF-18/A-58-C-17	LNA__1127	BR	0.008	0.003	0.005	0.009	0.000
A-58	A-58-DWF-18/A-58-C-17	LNA__1128	BR	0.008	0.005	0.003	0.011	0.001
A-58	A-58-DWF-18/A-58-C-17	LNA__1129	BR	0.008	0.006	0.002	0.010	0.000
A-58	A-58-GWI-16/A-58-C-39	LNA__1130	BR	0.020	0.020	0.000	0.038	0.015
A-58	A-58-GWI-16/A-58-C-39	LNA__1131	BR	0.169	0.169	0.000	0.268	0.104
A-58	A-58-DWF-15/A-58-C-18	LNA__1132	BR	0.019	0.007	0.012	0.038	0.010
A-58	A-58-DWF-15/A-58-C-18	LNA__1133	BR	0.005	0.001	0.004	0.007	0.001
A-58	A-58-DWF-15/A-58-C-18	LNA__1134	BR	0.054	0.034	0.020	0.134	0.090
A-58	A-58-DWF-17/A-58-C-19	LNA__1135	BR	0.011	0.008	0.003	0.013	0.004
A-58	A-58-DWF-13/A-58-C-31	LNA__1136	BR	0.036	0.000	0.036	0.086	0.005
A-58	A-58-DWF-13/A-58-C-31	LNA__1137	BR	0.028	0.000	0.028	0.068	0.031
A-58	A-58-GWI-16/A-58-C-26-A	LNA__1138	BR	0.039	0.039	0.000	0.046	0.007
A-58	A-58-DWF-28/A-58-C-10	LNA__1139	BR	0.069	0.068	0.001	0.149	0.063
A-58	A-58-DWF-28/A-58-C-8	LNA__1140	BR	0.019	0.019	0.000	0.031	0.014
A-58	A-58-DWF-11/A-58-C-41	LNA__1141	BR	0.023	0.023	0.000	0.039	0.022
A-58	A-58-DWF-11/A-58-C-41	LNA__1142	BR	0.812	0.812	0.000	1.721	0.691
A-61	A-61-DWF-1/A-61-C-1	LNA__1143	BR	0.089	0.007	0.082	0.229	0.105
A-61	A-61-DWF-1/A-61-C-1	LNA__1144	BR	0.113	0.113	0.000	0.421	0.258
A-61	A-61-DWF-1/A-61-C-1	LNA__1145	BR	0.124	0.124	0.000	0.356	0.178
A-62	A-62-River-Avenue	LNA__1146	BR	0.046	0.046	0.000	0.067	0.000
A-58	A-58-DWF-28/A-58-C-7	LNA__1147	BR	0.011	0.011	0.000	0.020	0.009
A-58	A-58-DWF-29/A-58-C-11	LNA__2001	IB	0.202	0.202	0.000	0.319	0.123
A-61	A-61-DWF-1/A-61-C-1	LNA__3001	GS	0.036	0.000	0.036	0.099	0.054
A-58	A-58-DWF-8/A-58-C-33-A	LNA__4001	VF	0.006	0.006	0.000	0.006	0.000
A-58	A-58-DWF-11/A-58-C-42	LNA__4002	VF	0.043	0.032	0.011	0.116	0.029
A-58	A-58-DWF-11/A-58-C-42	LNA__4003	VF	0.133	0.077	0.056	0.553	0.058
A-58	A-58-GWI-3/A-58-C-44	LNA__4004	VF	0.058	0.037	0.021	0.068	0.004
A-58	A-58-DWF-6/A-58-C-24	LNA__4005	VF	0.070	0.045	0.025	0.080	0.026

ALCOSAN POC	Model Subcatchment	Concept Municipal Project UID	BMP Type	Concept Municipal Project Area (acres)	Public ROW or Parcel		Concept Municipal Project Individual Drainage Area (acres)*	Concept Municipal Project Individual Project Impervious Drainage Area (acres)*
					Area of Municipal Project in Public ROW (acres)	Area of Municipal Project outside of Public ROW (acres)		
A-58	A-58-DWF-6/A-58-C-24	LNA__4006	VF	0.018	0.001	0.017	0.033	0.002
A-58	A-58-DWF-6/A-58-C-24	LNA__4007	VF	0.035	0.007	0.028	0.085	0.042
A-58	A-58-DWF-7/A-58-C-32	LNA__4008	VF	0.010	0.007	0.003	0.013	0.003
A-58	A-58-DWF-7/A-58-C-32	LNA__4009	VF	0.019	0.013	0.006	0.030	0.016

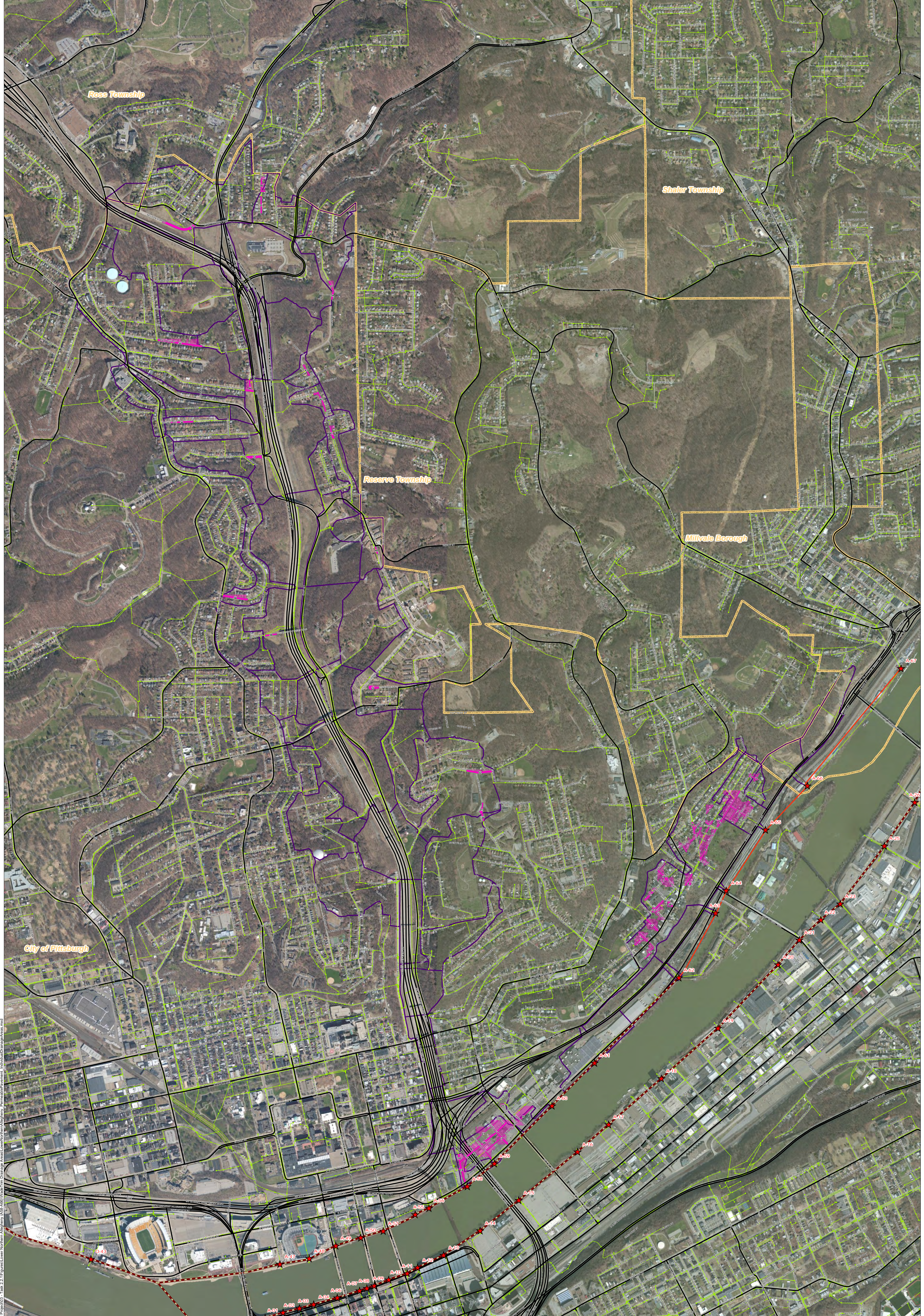


- ★ ALCOSAN Structures
  - ALCOSAN Shallow-Cut Interceptor
  - ALCOSAN Deep Tunnel Interceptor
  - One Overall Manholes
  - One Overall Sewerlines
- |                           |                               |
|---------------------------|-------------------------------|
| <b>Municipal Projects</b> | — State Roads                 |
| ■ Infiltration Basin      | ■ Combined Sewer Subcatchment |
| ■ Vegetated Filter Strip  | ■ Municipal Boundaries        |
| ■ Bioretention            |                               |
| ■ Grass Swales            |                               |
| ■ Permeable Pavement      |                               |

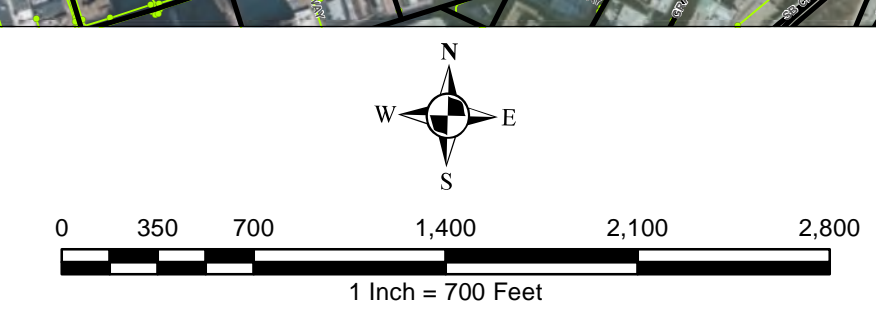


**ALCOSAN GSI Project**  
**Lower Northern Allegheny (A-58 thru A-66)**  
**Concept Municipal GSI Projects**

FROM: I:\PROJECTS\ALCOSAN\_GSI\Project\03 - Task 2.1\Figures\LowerNorthernAllegheny\_ConceptMunicipalGSI.mxd  
 SOURCE: Esri, DeLorme, USGS, AIR, GeoEye, IGN, Aerotech, Earthstar, AeroGRID, IGN, Esri, Swire, and others. User Contributed Imagery.



- ★ ALCOBAN Structures
- ALCOBAN Shallow-Cut Interceptor
- ALCOBAN Deep Tunnel Interceptor
- One Overall Manholes
- One Overall Sewerlines
- Permeable Pavement Municipal Projects
- Permeable Pavement Drainage Areas
- State Roads
- Combined Sewer Subcatchment
- Municipal Boundaries



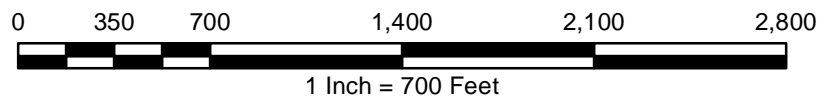
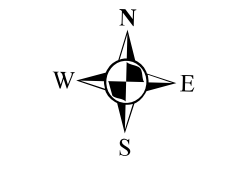
**ALCOBAN GSI Project**  
 Lower Northern Allegheny (A-58 thru A-66)  
 Concept Municipal Permeable Pavement GSI Projects  
 Individual Project Drainage Areas

File: I:\P\3403406 ALCOBAN GSI Project\03 - Task 2.1\Figures\Lower Northern Allegheny\_A58-A66\Work\Tm Drainage Areas\LowerNorthernAllegheny\_PermeablePavement\_IndividualDrainageAreas.mxd

Source: Esri, DigitalGlobe, GeoEye, IGN, GeoEye, USGS, AeroGRID, IGN, SRTM, Swirestop, and others. © 2011



- ★ ALCOSAN Structures
- ALCOSAN Shallow-Cut Interceptor
- ALCOSAN Deep Tunnel Interceptor
- One Overall Manholes
- One Overall Sewerlines
- Bioretention Municipal Projects
- Bioretention Drainage Areas
- State Roads
- Combined Sewer Subcatchment
- Municipal Boundaries



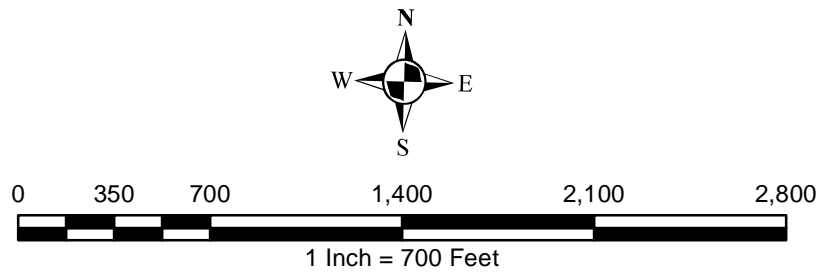
**ALCOSAN GSI Project**  
 Lower Northern Allegheny (A-58 thru A-66)  
 Concept Municipal Bioretention GSI Projects  
 Individual Project Drainage Areas

File: I:\FRD\343436 ALCOSAN GSI Project\03 - Task 2.1\Figures\Lower Northern Allegheny A58-A66\Watershed\Drainage Areas\LowerNorthernAllegheny\_Bioretenction\_IndividualProjectAreas.mxd

Source: Esri, DigitalGlobe, GeoEye, IGN, GeoEye, USGS, USDA, Swirestop, and others. User: [unreadable]



- ★ ALCOSAN Structures
- ALCOSAN Shallow-Cut Interceptor
- ALCOSAN Deep Tunnel Interceptor
- One Overall Manholes
- One Overall Sewerlines
- Infiltration Basin Municipal Projects
- Infiltration Basin Drainage Areas
- State Roads
- Combined Sewer Subcatchment
- Municipal Boundaries



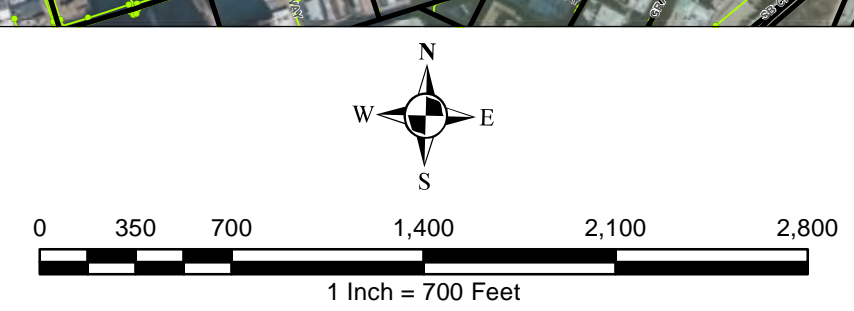
**ALCOSAN GSI Project**  
 Lower Northern Allegheny (A-58 thru A-66)  
 Concept Municipal Infiltration Basin GSI Projects  
 Individual Project Drainage Areas

File: I:\FRD\34034\05 ALCOSAN GSI Project\03 - Task 2.1\Figures\Lower Northern Allegheny A58-A66\Views\Frm Drainage Areas\LowerNorthernAllegheny\_InfiltrationBasin\_IndividualDrainageAreas.mxd

Source: Esri, DigitalGlobe, GeoEye, AeroGRID, IGN, USGS, USFWS, AeroGRID, IGN, USGS, USFWS, Swirestop, and others © 2011



- ★ ALCOSAN Structures
- ALCOSAN Shallow-Cut Interceptor
- ALCOSAN Deep Tunnel Interceptor
- One Overall Manholes
- One Overall Sewerlines
- Vegetated Filter Strip Municipal Projects
- Vegetated Filter Strips Drainage Areas
- State Roads
- Combined Sewer Subcatchment
- Municipal Boundaries



**ALCOSAN GSI Project**  
 Lower Northern Allegheny (A-58 thru A-66)  
 Concept Municipal Vegetated Filter Strip GSI Projects  
 Individual Project Drainage Areas

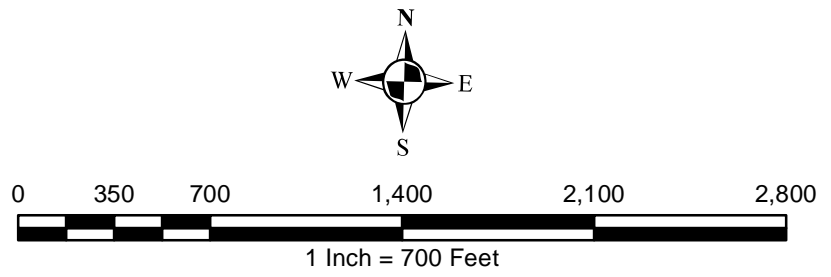
File: I:\FRD\3403405 ALCOSAN GSI Project\03 - Task 2.1\Figures\Lower Northern Allegheny\_Vegetated Filter Strips\_IndividualDrainageAreas.mxd

Source: Esri, DigitalGlobe, GeoEye, IGN, GeoEye, USGS, USDA, Swirestop, and others. © 2011





- ★ ALCOBAN Structures
- ALCOBAN Shallow-Cut Interceptor
- ALCOBAN Deep Tunnel Interceptor
- One Overall Manholes
- One Overall Sewerlines
- Grass Swale Municipal Projects
- Grass Swale Drainage Areas
- State Roads
- Combined Sewer Subcatchment
- Municipal Boundaries



**ALCOBAN GSI Project**  
 Lower Northern Allegheny (A-58 thru A-66)  
 Concept Municipal Grass Swale GSI Projects  
 Individual Project Drainage Areas

File: I:\P\2013\2013\2013\ALCOBAN GSI Project\03 - Task 2.1\Figures\Lower Northern Allegheny A-58 thru A-66\Map\Map\_IndividualDrainageAreas.mxd

**Lower Northern Allegheny Concept Commercial / Institutional Permeable Pavement, Green Roof, and Special Case GSI  
Projects: Summary Table**

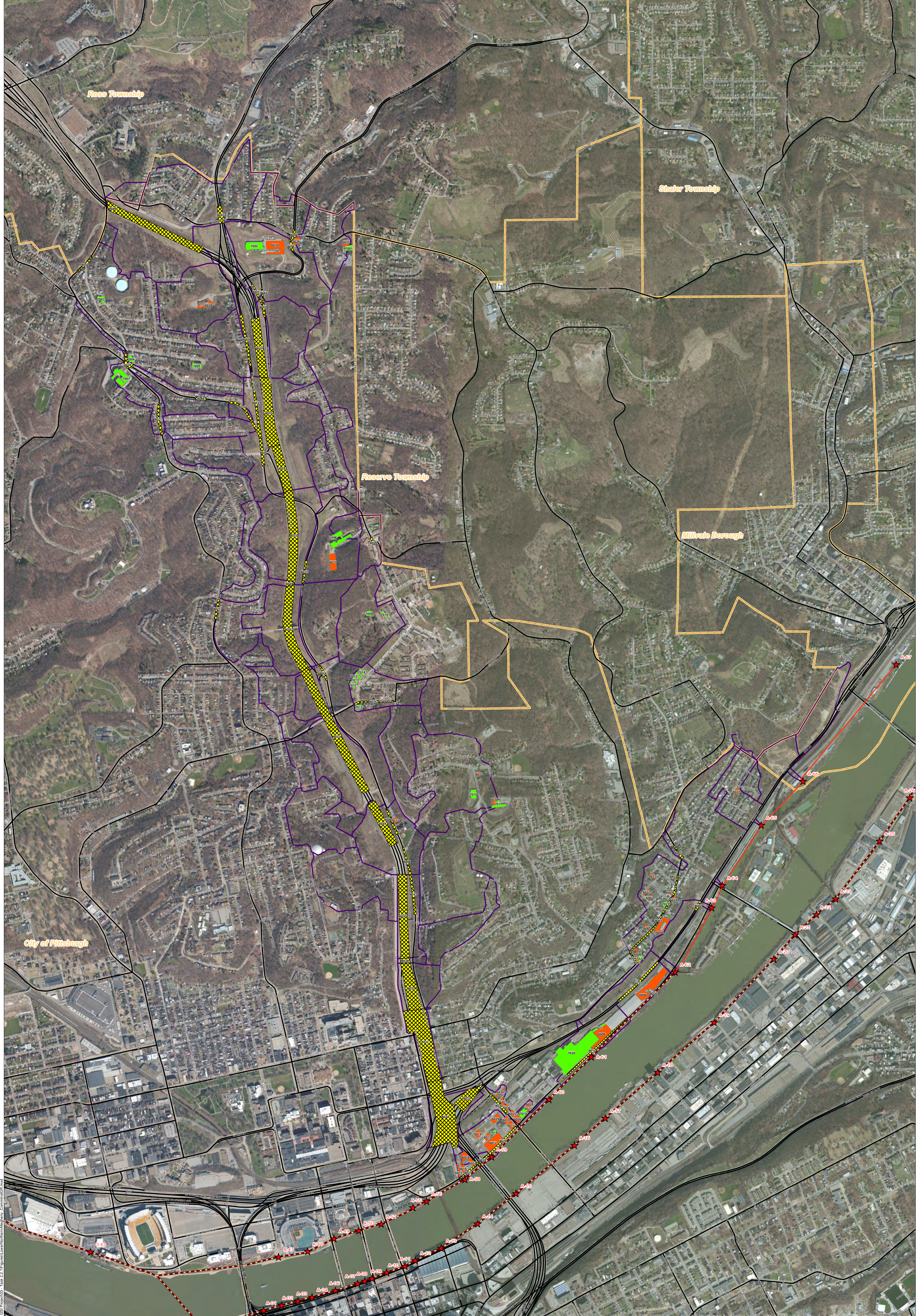
February 21, 2014  
Revised October 10, 2014

<b>ALCOSAN POC</b>	<b>Model Subcatchment</b>	<b>Concept Comm / Inst Project UID</b>	<b>BMP Type</b>	<b>Concept Municipal Project Area (acres)</b>	<b>Taxable (acres)</b>	<b>Exempt (acres)</b>	<b>Provisionally Exempt (acres)</b>	<b>Public ROW (acres)</b>
A-64-00	A-64-00	LNA__6001	CPP	0.118	0.006	0.000	0.000	0.112
A-64-00	A-64-00	LNA__6002	CPP	0.104	0.000	0.104	0.000	0.000
A-64-00	A-64-00	LNA__6003	CPP	0.048	0.000	0.000	0.000	0.048
A-64-00	A-64-00	LNA__6004	CPP	0.767	0.767	0.000	0.000	0.000
A-64-00	A-64-00	LNA__6005	CPP	0.136	0.133	0.000	0.000	0.003
A-64-00	A-64-00	LNA__6006	CPP	0.122	0.013	0.000	0.000	0.109
A-64-00	A-64-00	LNA__6007	CPP	0.068	0.067	0.000	0.000	0.001
A-62-00	A-62-River-Avenue	LNA__6008	CPP	2.106	1.913	0.000	0.000	0.193
A-61-00	A-61-DWF-1/A-61-C-1	LNA__6009	CPP	1.330	0.359	0.000	0.000	0.971
A-59-00	A-59A-DWF-1/A-59A-C-1	LNA__6010	CPP	0.238	0.198	0.000	0.000	0.040
A-59-00	A-59A-DWF-1/A-59A-C-1	LNA__6011	CPP	0.343	0.050	0.000	0.000	0.293
A-59-00	A-59A-DWF-1/A-59A-C-1	LNA__6012	CPP	1.174	0.063	0.000	0.000	1.111
A-59-00	A-59A-DWF-1/A-59A-C-1	LNA__6013	CPP	0.235	0.210	0.000	0.000	0.025
A-59-00	A-59A-DWF-1/A-59A-C-1	LNA__6014	CPP	0.316	0.007	0.000	0.000	0.309
A-58-00	A-58-DWF-1/A-58-C-1	LNA__6015	CPP	0.159	0.000	0.113	0.000	0.046
A-58-00	A-58-DWF-1/A-58-C-1	LNA__6016	CPP	0.232	0.054	0.000	0.000	0.178
A-58-00	A-58-DWF-1/A-58-C-1	LNA__6017	CPP	0.116	0.044	0.000	0.000	0.072
A-59-00	A-59A-DWF-1/A-59A-C-1	LNA__6018	CPP	0.449	0.054	0.000	0.000	0.395
A-58-00	A-58-DWF-6/A-58-C-24	LNA__6019	CPP	0.134	0.134	0.000	0.000	0.000
A-58-00	A-58-DWF-7/A-58-C-32	LNA__6020	CPP	0.222	0.213	0.000	0.000	0.009
A-65-00	A-65-00	LNA__6021	CPP	0.159	0.000	0.148	0.000	0.011
A-64-00	A-64-00	LNA__6022	CPP	0.099	0.000	0.071	0.000	0.028
A-64-00	A-64-00	LNA__6023	CPP	0.118	0.007	0.106	0.000	0.005
A-64-00	A-64-00	LNA__6024	CPP	0.085	0.074	0.000	0.000	0.011
A-59Z-00	A-59-DWF-1/A-59-C-1	LNA__6025	CPP	0.186	0.048	0.000	0.000	0.138
A-59Z-00	A-59-DWF-1/A-59-C-1	LNA__6026	CPP	0.283	0.268	0.000	0.000	0.015
A-59Z-00	A-59-DWF-1/A-59-C-1	LNA__6027	CPP	0.176	0.168	0.000	0.000	0.008
A-59Z-00	A-59-DWF-1/A-59-C-1	LNA__6028	CPP	0.090	0.082	0.000	0.000	0.008

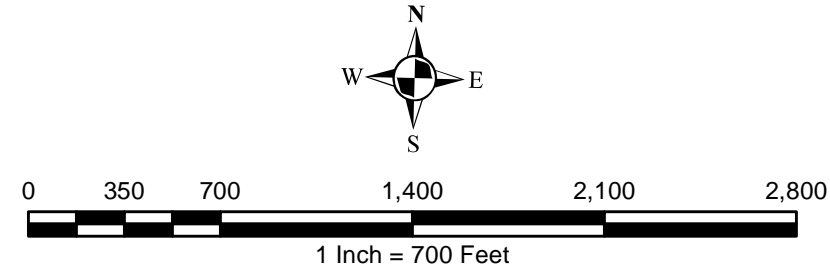
ALCOSAN POC	Model Subcatchment	Concept Comm / Inst Project UID	BMP Type	Concept Municipal Project Area (acres)	Taxable (acres)	Exempt (acres)	Provisionally Exempt (acres)	Public ROW (acres)
A-59-00	A-59A-DWF-1/A-59A-C-1	LNA__6029	CPP	0.396	0.356	0.000	0.000	0.040
A-59Z-00	A-59-DWF-1/A-59-C-1	LNA__6030	CPP	0.183	0.119	0.000	0.000	0.064
A-59Z-00	A-59-DWF-1/A-59-C-1	LNA__6031	CPP	0.191	0.001	0.000	0.000	0.190
A-58-00	A-58-GWI-3/A-58-C-43	LNA__6032	CPP	0.189	0.000	0.189	0.000	0.000
A-58-00	A-58-DWF-7/A-58-C-32	LNA__6033	CPP	0.099	0.099	0.000	0.000	0.000
A-59Z-00	A-59-DWF-1/A-59-C-1	LNA__6034	CPP	0.132	0.000	0.116	0.015	0.001
A-58-00	A-58-DWF-30/A-58-C-5	LNA__6035	CPP	0.200	0.200	0.000	0.000	0.000
A-58-00	A-58-DWF-30/A-58-C-5	LNA__6036	CPP	0.207	0.102	0.000	0.000	0.105
A-58-00	A-58-DWF-11/A-58-C-37	LNA__6037	CPP	0.771	0.000	0.771	0.000	0.000
A-58-00	A-58-DWF-28/A-58-C-9	LNA__6038	CPP	0.274	0.000	0.274	0.000	0.000
A-58-00	A-58-DWF-28/A-58-C-7	LNA__6039	CPP	1.457	1.457	0.000	0.000	0.000
A-58-00	A-58-DWF-30/A-58-C-5	LNA__7001	GR	0.271	0.271	0.000	0.000	0.000
A-58-00	A-58-DWF-28/A-58-C-7	LNA__7002	GR	0.944	0.944	0.000	0.000	0.000
A-58-00	A-58-DWF-26/A-58-C-13	LNA__7003	GR	0.277	0.000	0.277	0.000	0.000
A-58-00	A-58-DWF-26/A-58-C-13	LNA__7004	GR	0.249	0.043	0.000	0.000	0.206
A-58-00	A-58-DWF-26/A-58-C-13	LNA__7005	GR	0.268	0.000	0.268	0.000	0.000
A-58-00	A-58-DWF-11/A-58-C-37	LNA__7006	GR	1.030	0.000	1.030	0.000	0.000
A-58-00	A-58-DWF-32/A-58-C-45-A	LNA__7007	GR	1.070	0.000	1.000	0.000	0.070
A-58-00	A-58-DWF-20/A-58-C-29	LNA__7008	GR	0.119	0.000	0.119	0.000	0.000
A-58-00	A-58-DWF-13/A-58-C-31	LNA__7009	GR	0.184	0.000	0.184	0.000	0.000
A-58-00	A-58-DWF-13/A-58-C-31	LNA__7010	GR	0.122	0.000	0.122	0.000	0.000
A-58-00	A-58-DWF-8/A-58-C-33-A	LNA__7011	GR	0.117	0.000	0.117	0.000	0.000
A-58-00	A-58-DWF-8/A-58-C-33-A	LNA__7012	GR	0.118	0.000	0.118	0.000	0.000
A-58-00	A-58-DWF-8/A-58-C-33-A	LNA__7013	GR	0.122	0.000	0.122	0.000	0.000
A-58-00	A-58-DWF-8/A-58-C-33-A	LNA__7014	GR	0.118	0.000	0.118	0.000	0.000
A-58-00	A-58-DWF-8/A-58-C-33-A	LNA__7015	GR	0.148	0.000	0.148	0.000	0.000
A-58-00	A-58-DWF-7/A-58-C-32	LNA__7016	GR	0.366	0.366	0.000	0.000	0.000
A-58-00	A-58-DWF-5/A-58-C-34	LNA__7017	GR	0.359	0.350	0.000	0.000	0.009
A-59-00	A-59A-DWF-1/A-59A-C-1	LNA__7018	GR	0.150	0.134	0.000	0.000	0.016
A-59Z-00	A-59-DWF-1/A-59-C-1	LNA__7019	GR	0.384	0.374	0.000	0.000	0.010
A-61-00	A-61-DWF-1/A-61-C-1	LNA__7020	GR	6.002	6.002	0.000	0.000	0.000
A-61-00	A-61-DWF-1/A-61-C-1	LNA__7021	GR	0.206	0.020	0.000	0.000	0.186
A-64-00	A-64-00	LNA__7022	GR	0.199	0.065	0.000	0.000	0.134
A-64-00	A-64-00	LNA__7023	GR	0.129	0.004	0.000	0.000	0.125

ALCOSAN POC	Model Subcatchment	Concept Comm / Inst Project UID	BMP Type	Concept Municipal Project Area (acres)	Taxable (acres)	Exempt (acres)	Provisionally Exempt (acres)	Public ROW (acres)
A-64-00	A-64-00	LNA__8001	SRPP	0.217	0.000	0.000	0.000	0.217
A-63-00	A-63-00	LNA__8002	SRPP	0.200	0.000	0.000	0.000	0.200
A-64-00	A-64-00	LNA__8003	SRPP	1.111	0.001	0.000	0.000	1.110
A-64-00	A-64-00	LNA__8004	SRPP	0.153	0.000	0.001	0.000	0.152
A-58-00	A-58-DWF-30/A-58-C-5	LNA__8005	SRPP	0.139	0.000	0.000	0.000	0.139
A-58-00	A-58-DWF-28/A-58-C-7	LNA__8006	SRPP	0.221	0.009	0.000	0.000	0.212
A-58-00	A-58-DWF-28/A-58-C-8	LNA__8007	SRPP	1.004	0.000	0.000	0.000	1.004
A-58-00	A-58-GWI-3/A-58-C-43	LNA__8008	SRPP	0.413	0.000	0.026	0.000	0.387
A-58-00	A-58-GWI-3/A-58-C-43	LNA__8009	SRPP	0.458	0.002	0.002	0.000	0.454
A-61-00	A-61-DWF-1/A-61-C-1	LNA__8010	SRPP	1.338	0.042	0.000	0.000	1.296
A-58-00	A-58-DWF-15/A-58-C-18	LNA__8011	SRPP	0.362	0.000	0.000	0.000	0.362
A-58-00	A-58-GWI-16/A-58-C-36	LNA__8012	SRPP	1.495	0.000	0.041	0.000	1.454
A-58-00	A-58-GWI-16/A-58-C-36	LNA__8013	SRPP	5.416	0.055	0.282	0.000	5.079
A-58-00	A-58-GWI-16/A-58-C-36	LNA__8014	SRPP	2.988	0.000	0.034	0.000	2.954
A-58-00	A-58-GWI-16/A-58-C-38	LNA__8015	SRPP	6.086	0.057	0.010	0.000	6.019
A-58-00	A-58-GWI-16/A-58-C-39	LNA__8016	SRPP	5.849	0.026	0.043	0.000	5.780
A-58-00	A-58-GWI-16/A-58-C-26-A	LNA__8017	SRPP	3.759	0.000	0.347	0.000	3.412
A-58-00	A-58-DWF-32/A-58-C-45-B	LNA__8018	SRPP	0.467	0.000	0.004	0.000	0.463
A-58-00	A-58-GWI-16/A-58-C-14	LNA__8019	SRPP	0.478	0.000	0.000	0.000	0.478
A-58-00	A-58-GWI-16/A-58-C-36	LNA__8020	SRPP	0.690	0.000	0.000	0.000	0.690
A-58-00	A-58-DWF-32/A-58-C-45-A	LNA__8021	SRPP	0.545	0.000	0.000	0.000	0.545
A-58-00	A-58-DWF-11/A-58-C-37	LNA__8022	SRPP	0.371	0.000	0.193	0.000	0.178
A-58-00	A-58-DWF-11/A-58-C-41	LNA__8023	SRPP	8.722	0.010	0.030	0.000	8.682
A-58-00	A-58-DWF-11/A-58-C-42	LNA__8024	SRPP	0.393	0.000	0.000	0.000	0.393
A-58-00	A-58-DWF-29/A-58-C-11	LNA__8025	SRPP	0.109	0.000	0.000	0.000	0.109
A-58-00	A-58-DWF-20/A-58-C-29	LNA__8026	SRPP	0.160	0.000	0.160	0.000	0.000
A-58-00	A-58-DWF-1/A-58-C-1	LNA__8027	SRPP	0.307	0.023	0.000	0.000	0.284
A-58-00	A-58-DWF-1/A-58-C-1	LNA__8028	SRPP	0.270	0.044	0.000	0.000	0.226
A-59-00	A-59A-DWF-1/A-59A-C-1	LNA__8029	SRPP	0.601	0.001	0.000	0.000	0.600
A-59Z-00	A-59-DWF-1/A-59-C-1	LNA__8030	SRPP	0.522	0.000	0.000	0.067	0.455
A-58-00	A-58-DWF-2/A-58-C-4	LNA__8031	SRPP	4.136	0.000	0.036	0.000	4.100
A-58-00	A-58-DWF-2/A-58-C-3	LNA__8032	SRPP	9.230	0.000	0.029	0.000	9.201
A-58-00	A-58-DWF-2/A-58-C-2	LNA__8033	SRPP	2.048	0.000	0.032	0.000	2.016
A-58-00	A-58-DWF-2/A-58-C-2	LNA__8034	SRPP	8.906	0.014	0.053	1.022	7.817

<b>ALCOSAN POC</b>	<b>Model Subcatchment</b>	<b>Concept Comm / Inst Project UID</b>	<b>BMP Type</b>	<b>Concept Municipal Project Area (acres)</b>	<b>Taxable (acres)</b>	<b>Exempt (acres)</b>	<b>Provisionally Exempt (acres)</b>	<b>Public ROW (acres)</b>
A-58-00	A-58-DWF-8/A-58-C-33-A	LNA__8035	SRPP	0.519	0.000	0.008	0.000	0.511
A-62-00	A-62-River-Avenue	LNA__8036	SRPP	0.097	0.000	0.000	0.000	0.097
A-62-00	A-62-East-Ohio-Street	LNA__8037	SRPP	0.934	0.000	0.000	0.019	0.915
A-58-00	A-58-GWI-3/A-58-C-47	LNA__8038	SRPP	0.354	0.000	0.000	0.000	0.354
A-58-00	A-58-GWI-3/A-58-C-44	LNA__8039	SRPP	5.340	0.009	0.002	0.000	5.329
A-58-00	A-58-DWF-28/A-58-C-12	LNA__8040	SRPP	5.376	3.036	0.000	0.000	2.340
A-58-00	A-58-DWF-28/A-58-C-7	LNA__8041	SRPP	0.194	0.000	0.000	0.000	0.194
A-58-00	A-58-DWF-28/A-58-C-7	LNA__8042	SRPP	0.101	0.000	0.000	0.000	0.101
A-58-00	A-58-GWI-3/A-58-C-44	LNA__8043	SRPP	0.729	0.000	0.212	0.000	0.517
A-58-00	A-58-GWI-3/A-58-C-43	LNA__8044	SRPP	2.983	0.000	0.070	0.000	2.913
A-58-00	A-58-DWF-29/A-58-C-11	LNA__8045	SRPP	0.660	0.000	0.000	0.000	0.660
A-58-00	A-58-DWF-31/A-58-C-6	LNA__8046	SRPP	0.218	0.002	0.000	0.000	0.216
A-58-00	A-58-GWI-16/A-58-C-26-A	LNA__8047	SRPP	0.410	0.000	0.000	0.000	0.410
A-58-00	A-58-DWF-32/A-58-C-45-B	LNA__8048	SRPP	0.222	0.000	0.000	0.000	0.222
A-58-00	A-58-DWF-18/A-58-C-17	LNA__8049	SRPP	0.264	0.000	0.019	0.000	0.245
A-58-00	A-58-DWF-26/A-58-C-13	LNA__8050	SRPP	0.309	0.000	0.000	0.000	0.309



- ★ ALCOSAN Structures
- Concept Commercial / Institutional Permeable Pavement Projects
- Concept Green Roof Projects
- Special Case
- Combined Sewer Subcatchment
- Municipal Boundaries
- State Roads
- ALCOSAN Shallow-Cut Interceptor
- ALCOSAN Deep Tunnel Interceptor



**ALCOSAN GSI Project**  
 Lower Northern Allegheny (A-58 thru A-66)  
 Concept Commercial / Institutional,  
 Green Roof, and Special Case GSI Projects

Path: I:\PROJECTS\ALCOSAN GSI Project\03 - Task 2.1 Figures\LowerNorthernAllegheny\_CommunityGSI.mxd

Source: Esri, DeLorme, NAVTEQ, USGS, Air Photo, Swiremap, IGN, Esri, and the GIS User Community