

### 5.23 Study Area 23 – Downtown Allegheny

These findings apply to ALCOSAN Points of Connection A-01 through A-13, which include combined sewer systems in the City of Pittsburgh.

#### Downtown Allegheny - BMP GIS Features

The SUSTAIN BMP siting tool analysis resulted in identification of a total of 1,327 BMP GIS Features covering 129 acres, which consisted of the following:

**Table 5.23-1 - TOTAL SUSTAIN BMP Features Output**

<b>SUSTAIN BMP Feature Type</b>	<b>Number of Features</b>	<b>Area of BMP Features (Acres)</b>
Permeable Pavement	451	63
Bioretention	329	22
Infiltration Basin/Trenches	45	3
Vegetated Filter Strips	155	23
Grass Swales	347	19
Constructed Wetlands	0	0

Locations of all identified BMP GIS features are presented on the SUSTAIN BMP Features Figure.

Downtown Allegheny - Concept Municipal GSI Projects

Based on the BMP features, 51 concept Municipal GSI Projects were identified covering 5 total acres with a corresponding drainage area delineation of 20 total acres and consisted of the following:

**Table 5.23-2 - Summary of Identified Concept Municipal GSI Projects**

<b>Concept GSI Technology</b>	<b>Number of Projects</b>	<b>GSI Project Area (Acres)</b>	<b>Project Drainage Area (Acres)</b>
Permeable Pavement	32	5	19
Bioretention	16	1	1
Infiltration Basin/Trenches	3	< 1	< 1
Vegetated Filter Strips	0	0	0
Grass Swales	0	0	0
Constructed Wetlands	0	0	0

Project statistics including ALCOSAN POC, model subcatchment, BMP type, project area, area of project inside and outside of the public right-of-way, tributary drainage area, and tributary impervious drainage area are provided in the Concept Municipal Projects Table. Locations of all identified Concept Municipal GSI projects are presented in the Concept Municipal GSI Projects Figure (1) and the corresponding delineated tributary drainage areas are presented by BMP in the Individual Project Drainage Area Figures (3).

Downtown Allegheny - Concept Commercial/Institutional and Special Case GSI Projects

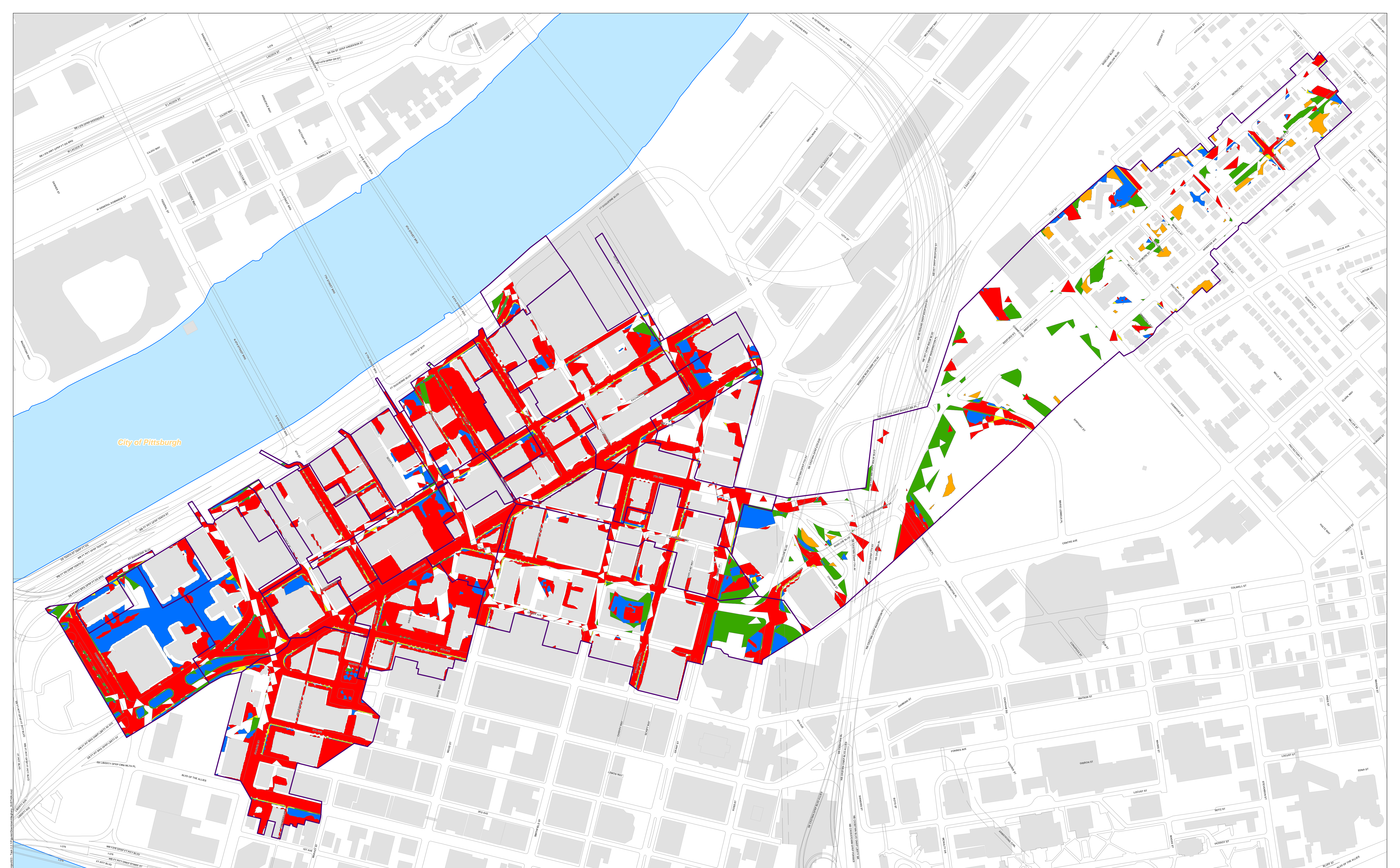
Based on the BMP features, 142 concept Commercial/Institutional and Special Case GSI Projects were identified covering 49 total acres and consisted of the following:

**Table 5.23-3 - Summary of Identified Concept Commercial/Institutional and Special Case GSI Projects**

<b>Concept GSI Technology or Special Case Project Category</b>	<b>Number of Projects</b>	<b>GSI Project Area (Acres)</b>
Commercial/Institutional Permeable Pavement	26	5
Commercial/Institutional Green Roofs	58	19
State Route Permeable Pavement	58	25
Busway Permeable Pavement	0	0
Busway Bioretention	0	0

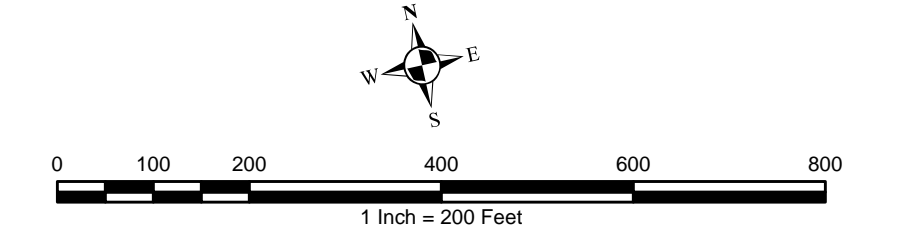
Project statistics including ALCOSAN POC, model subcatchment, BMP type, project area, area of project taxable, exempt, provisionally exempt and in the public right-of-way are provided in Concept Commercial / Institutional GSI Projects Table. Locations of all identified Concept Commercial / Institutional GSI projects are presented in the Concept Commercial / Institutional GSI Projects Figure (1).





City of Pittsburgh

- Permeable Pavement
- Vegetated Filter Strips
- Combined Sewer Subcatchment
- Infiltration Basin / Trench
- Constructed Wetlands
- Municipal Boundaries
- Bioretention Basin
- Grass Swales



**ALCOSAN GSI Project**  
 Downtown Allegheny (A-01 thru A-13)  
**SUSTAIN BMP Features**



## Downtown Allegheny Concept Municipal Projects

June 16, 2014

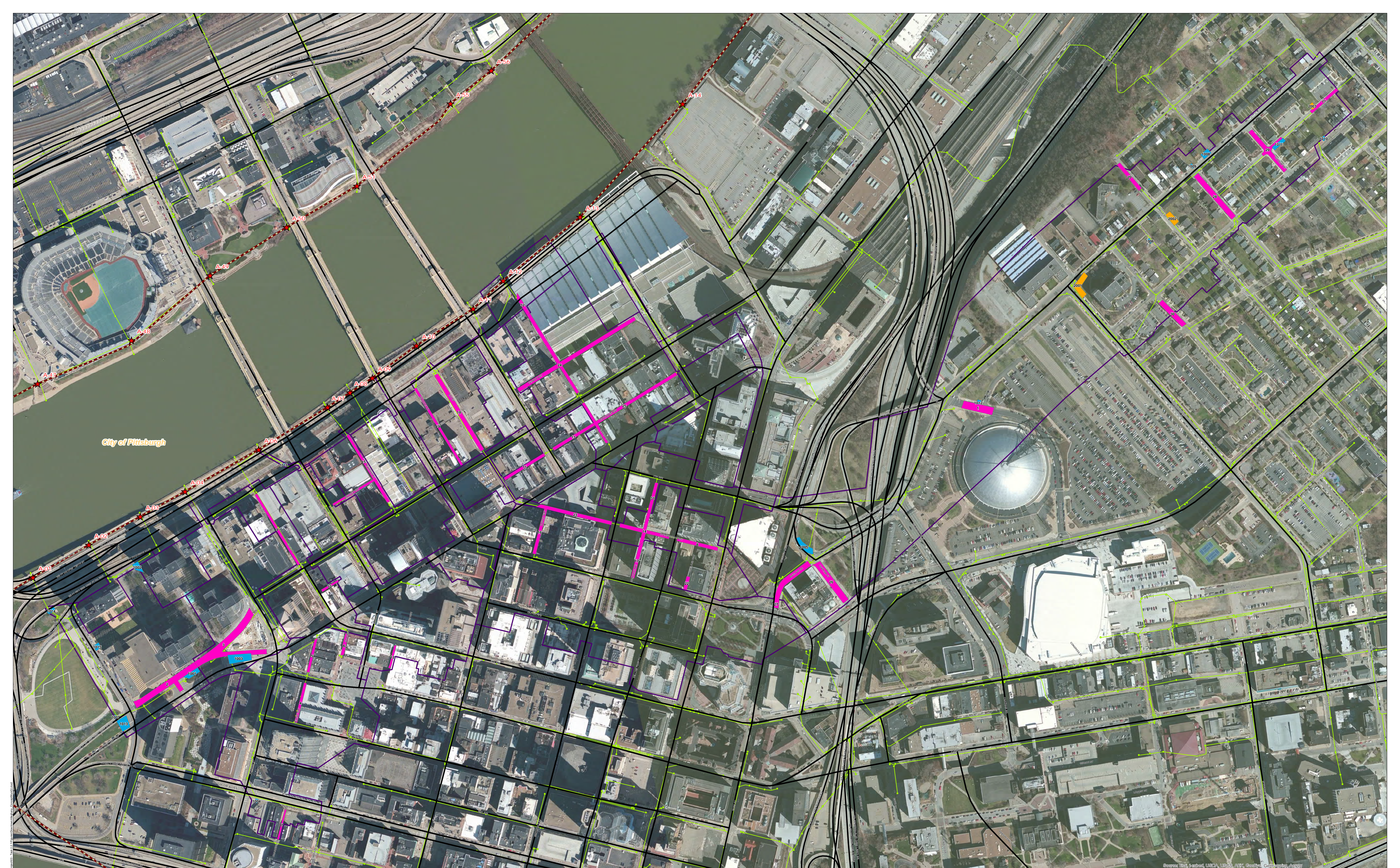
Revised October 7, 2014

\*Note: The drainage area presented in this table is representative of the individual drainage area tributary to each concept municipal project without any revisions to account for overlap, without engineering judgment revisions applied, and without the drainage areas being clipped to their corresponding model subcatchments.

ALCOSAN POC	Model Subcatchment	Concept Municipal Project UID	BMP Type	Concept Municipal Project Area (acres)	Public ROW or Parcel		Concept Municipal Project Individual Drainage Area (acres)*	Concept Municipal Project Individual Project Impervious Drainage Area (acres)*
					Area of Municipal Project in Public ROW (acres)	Area of Municipal Project outside of Public ROW (acres)		
A-12-00	A-12-DWF-2/A-12-C-3	DALL_1	PP	0.144	0.000	0.144	0.287	0.193
A-01-00	A-01-DWF-1/A-01-C-1	DALL_2	PP	0.304	0.304	0.000	0.698	0.423
A-04-00	A-04-DWF-1/A-04-C-1	DALL_3	PP	0.482	0.482	0.000	1.129	0.506
A-04-00	A-04-DWF-2/A-04-C-2	DALL_4	PP	0.069	0.065	0.004	0.298	0.283
A-04-00	A-04-DWF-2/A-04-C-2	DALL_5	PP	0.055	0.055	0.000	0.210	0.172
A-04-00	A-04-DWF-2/A-04-C-2	DALL_6	PP	0.045	0.045	0.000	0.127	0.083
A-04-00	A-04-DWF-2/A-04-C-2	DALL_7	PP	0.032	0.029	0.003	0.082	0.068
A-10-00	A-10-DWF-2/A-10-C-2	DALL_8	PP	0.088	0.060	0.028	0.270	0.168
A-05-00	A-05-DWF-2/A-05-C-2	DALL_9	PP	0.133	0.133	0.000	0.858	0.783
A-05-00	A-05-DWF-1/A-05-C-1	DALL_10	PP	0.027	0.024	0.003	0.042	0.039
A-11-00	A-11-DWF-1/A-11-C-1	DALL_11	PP	0.085	0.085	0.000	0.302	0.270
A-06-00	A-06-DWF-2/A-06-C-4	DALL_12	PP	0.030	0.030	0.000	0.089	0.080
A-11-00	A-11-DWF-1/A-11-C-1	DALL_13	PP	0.092	0.092	0.000	0.307	0.241
A-10-00	A-10-DWF-2/A-10-C-2	DALL_14	PP	0.170	0.151	0.019	0.566	0.396
A-07-00	A-07-DWF-1/A-07-C-1	DALL_15	PP	0.205	0.151	0.054	0.547	0.443
A-09-00	A-09-DWF-1/A-09-C-2-B	DALL_16	PP	0.089	0.083	0.006	0.345	0.307
A-09-00	A-09-DWF-1/A-09-C-2-B	DALL_17	PP	0.075	0.075	0.000	0.266	0.173
A-10-00	A-10-DWF-1/A-10-C-1	DALL_18	PP	0.224	0.224	0.000	0.583	0.559
A-10-00	A-10-DWF-1/A-10-C-1	DALL_19	PP	0.141	0.126	0.015	0.549	0.459
A-12-00	A-12-DWF-2/A-12-C-3	DALL_20	PP	0.078	0.078	0.000	0.214	0.127
A-12-00	A-12-DWF-2/A-12-C-3	DALL_21	PP	0.067	0.067	0.000	0.377	0.072
A-10-00	A-10-DWF-2/A-10-C-2	DALL_22	PP	0.029	0.029	0.000	0.058	0.045
A-10-00	A-10-DWF-2/A-10-C-2	DALL_23	PP	0.163	0.147	0.016	0.407	0.321
A-12-00	A-12-DWF-1/A-12-C-1	DALL_24	PP	0.527	0.518	0.009	5.219	4.466
A-12-00	A-12-DWF-1/A-12-C-1	DALL_25	PP	0.269	0.246	0.023	1.840	1.591
A-12-00	A-12-DWF-2/A-12-C-3	DALL_26	PP	0.199	0.199	0.000	0.317	0.191
A-12-00	A-12-DWF-2/A-12-C-3	DALL_27	PP	0.201	0.201	0.000	0.755	0.617
A-12-00	A-12-DWF-2/A-12-C-3	DALL_28	PP	0.192	0.192	0.000	0.824	0.407

ALCOSAN POC	Model Subcatchment	Concept Municipal Project UID	BMP Type	Concept Municipal Project Area (acres)	Public ROW or Parcel		Concept Municipal Project Individual Drainage Area (acres)*	Concept Municipal Project Individual Project Impervious Drainage Area (acres)*
					Area of Municipal Project in Public ROW (acres)	Area of Municipal Project outside of Public ROW (acres)		
A-12-00	A-12-DWF-2/A-12-C-3	DALL_29	PP	0.185	0.055	0.130	0.668	0.275
A-12-00	A-12-DWF-2/A-12-C-3	DALL_30	PP	0.107	0.107	0.000	0.314	0.158
A-12-00	A-12-DWF-1/A-12-C-2	DALL_31	PP	0.062	0.060	0.002	0.190	0.164
A-12-00	A-12-DWF-1	DALL_32	PP	0.047	0.047	0.000	0.137	0.128
A-01-00	A-01-DWF-1/A-01-C-1	DALL_1001	BR	0.056	0.056	0.000	0.068	0.018
A-03-00	A-03-DWF-1/A-03-C-1	DALL_1002	BR	0.036	0.007	0.029	0.044	0.011
A-04-00	A-04-DWF-1/A-04-C-1	DALL_1003	BR	0.112	0.112	0.000	0.116	0.038
A-04-00	A-04-DWF-2/A-04-C-2	DALL_1004	BR	0.008	0.005	0.003	0.011	0.004
A-12-00	A-12-DWF-2/A-12-C-3	DALL_1005	BR	0.076	0.028	0.048	0.084	0.036
A-12-00	A-12-DWF-2/A-12-C-3	DALL_1006	BR	0.008	0.003	0.005	0.011	0.000
A-01-00	A-01-DWF-1/A-01-C-1	DALL_1007	BR	0.006	0.006	0.000	0.007	0.000
A-12-00	A-12-DWF-2/A-12-C-3	DALL_1008	BR	0.033	0.019	0.014	0.043	0.011
A-12-00	A-12-DWF-2/A-12-C-3	DALL_1009	BR	0.008	0.004	0.004	0.014	0.002
A-12-00	A-12-DWF-2/A-12-C-3	DALL_1010	BR	0.010	0.006	0.004	0.014	0.003
A-12-00	A-12-DWF-2/A-12-C-3	DALL_1011	BR	0.035	0.019	0.016	0.068	0.015
A-12-00	A-12-DWF-2/A-12-C-3	DALL_1012	BR	0.014	0.000	0.014	0.024	0.009
A-01-00	A-01-DWF-1/A-01-C-1	DALL_1013	BR	0.075	0.075	0.000	0.089	0.089
A-01-00	A-01-DWF-1/A-01-C-1	DALL_1014	BR	0.017	0.017	0.000	0.023	0.010
A-01-00	A-01-DWF-1/A-01-C-1	DALL_1015	BR	0.022	0.020	0.002	0.028	0.009
A-06-00	A-06-DWF-3/A-06-C-1	DALL_1016	BR	0.005	0.000	0.005	0.007	0.001
A-12-00	A-12-DWF-2/A-12-C-3	DALL_2001	IB	0.097	0.055	0.042	0.206	0.059
A-12-00	A-12-DWF-2/A-12-C-3	DALL_2002	IB	0.051	0.028	0.023	0.082	0.011
A-12-00	A-12-DWF-2/A-12-C-3	DALL_2003	IB	0.016	0.006	0.010	0.023	0.003



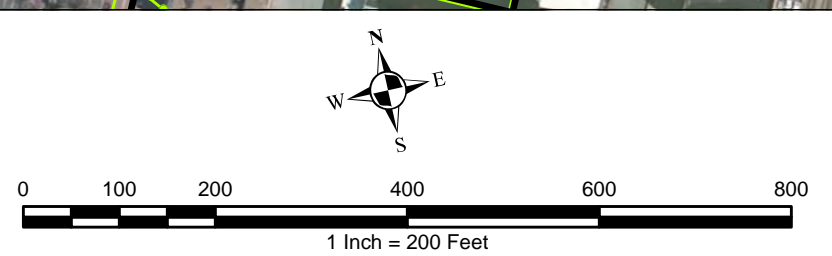


City of Pittsburgh

- ★ ALCOSAN Structures
- ALCOSAN Shallow-Cut Interceptor
- ALCOSAN Deep Tunnel Interceptor
- One Overall Manholes
- One Overall Sewerlines

- Municipal Projects**
- Infiltration Basin
  - Bioretention
  - Permeable Pavement

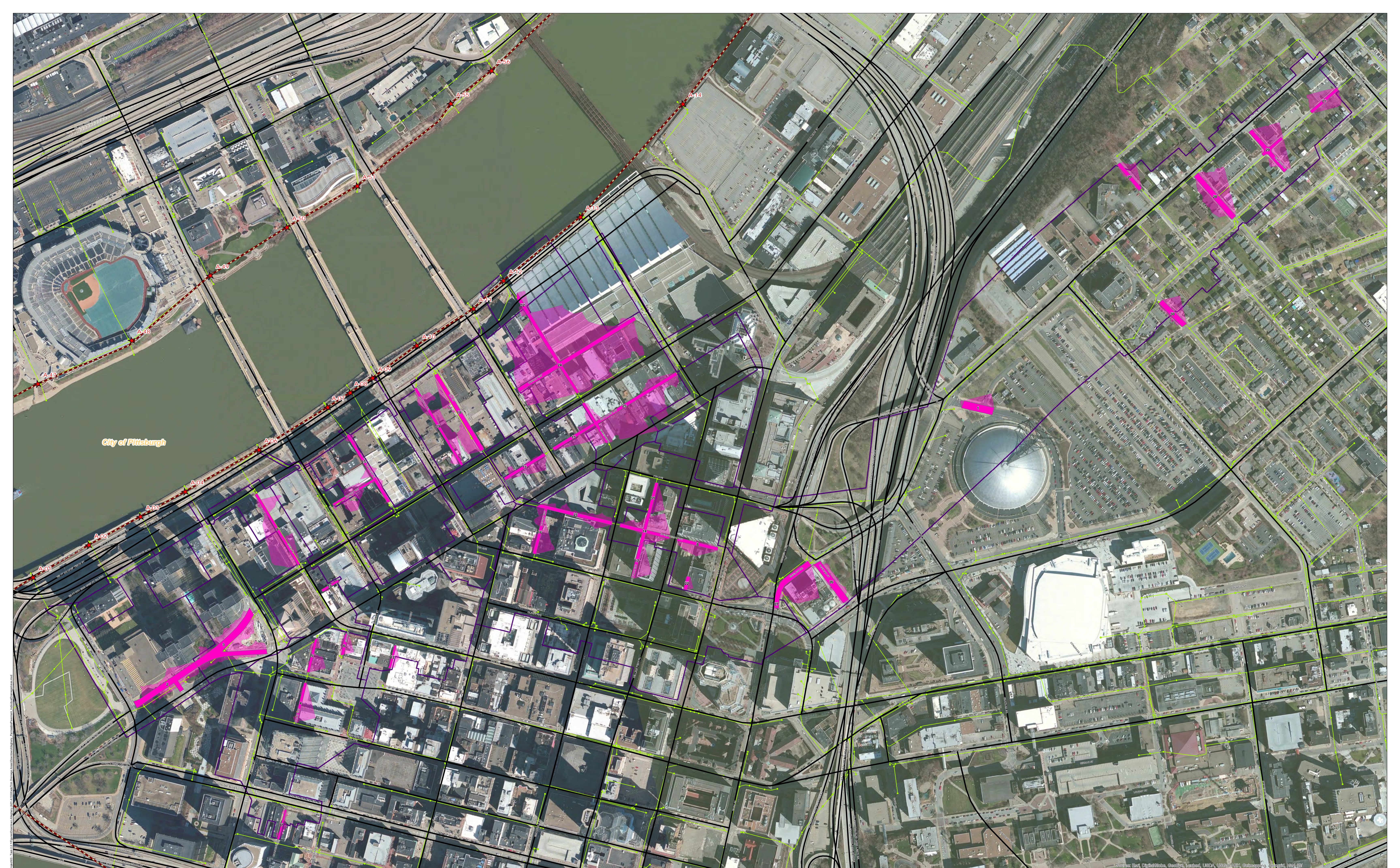
- State Roads
- Combined Sewer Subcatchment
- Municipal Boundaries



**ALCOSAN GSI Project**  
 Downtown Allegheny (A-01 thru A-13)  
 Concept Municipal GSI Projects

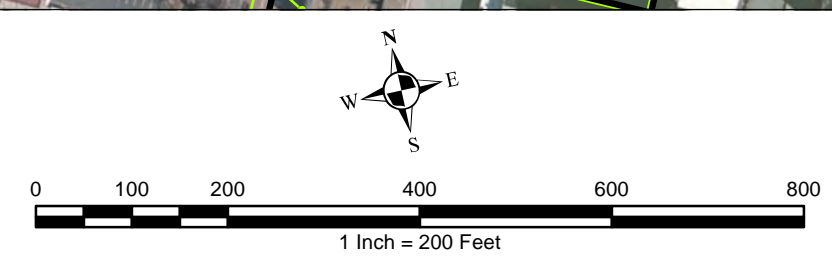
Source: Esri, Imagery, USGS, USGS, AEC, © 2014, City of Pittsburgh, © 2014





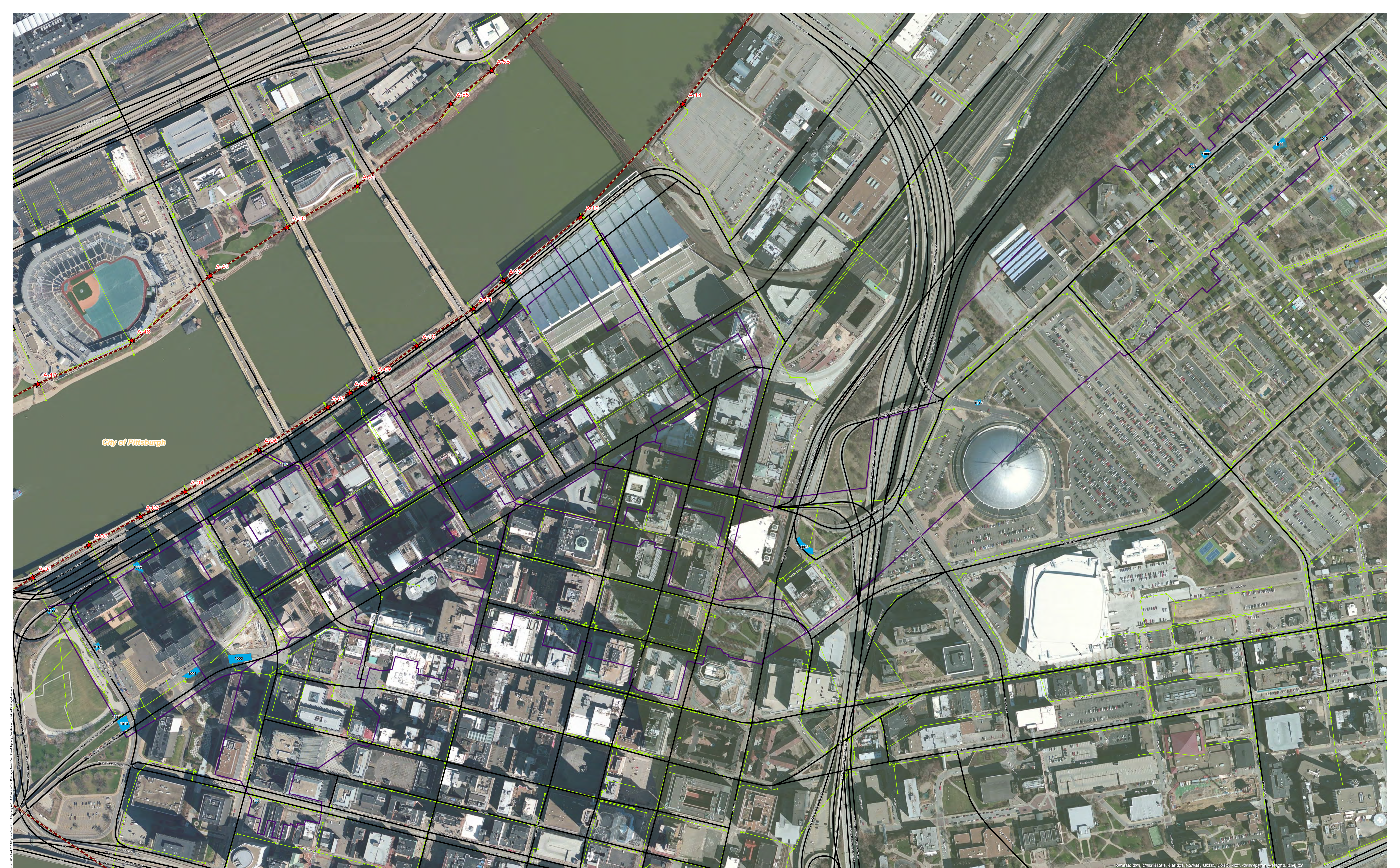
City of Pittsburgh

- ★ ALCOSAN Structures
- ALCOSAN Shallow-Cut Interceptor
- ALCOSAN Deep Tunnel Interceptor
- One Overall Manholes
- One Overall Sewerlines
- Permeable Pavement Municipal Projects
- Permeable Pavement Drainage Areas
- State Roads
- Combined Sewer Subcatchment
- Municipal Boundaries



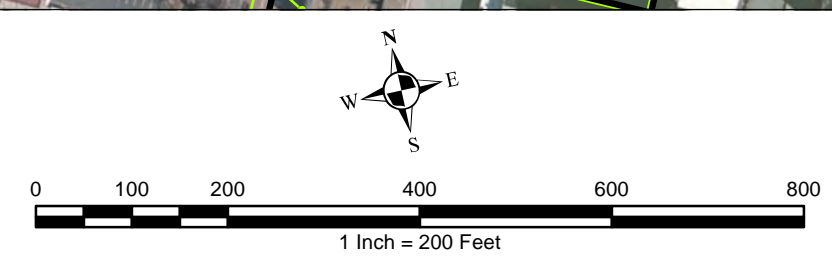
**ALCOSAN GSI Project**  
 Downtown Allegheny (A-01 thru A-13)  
 Concept Municipal Permeable Pavement GSI Projects  
 Individual Project Drainage Areas





City of Pittsburgh

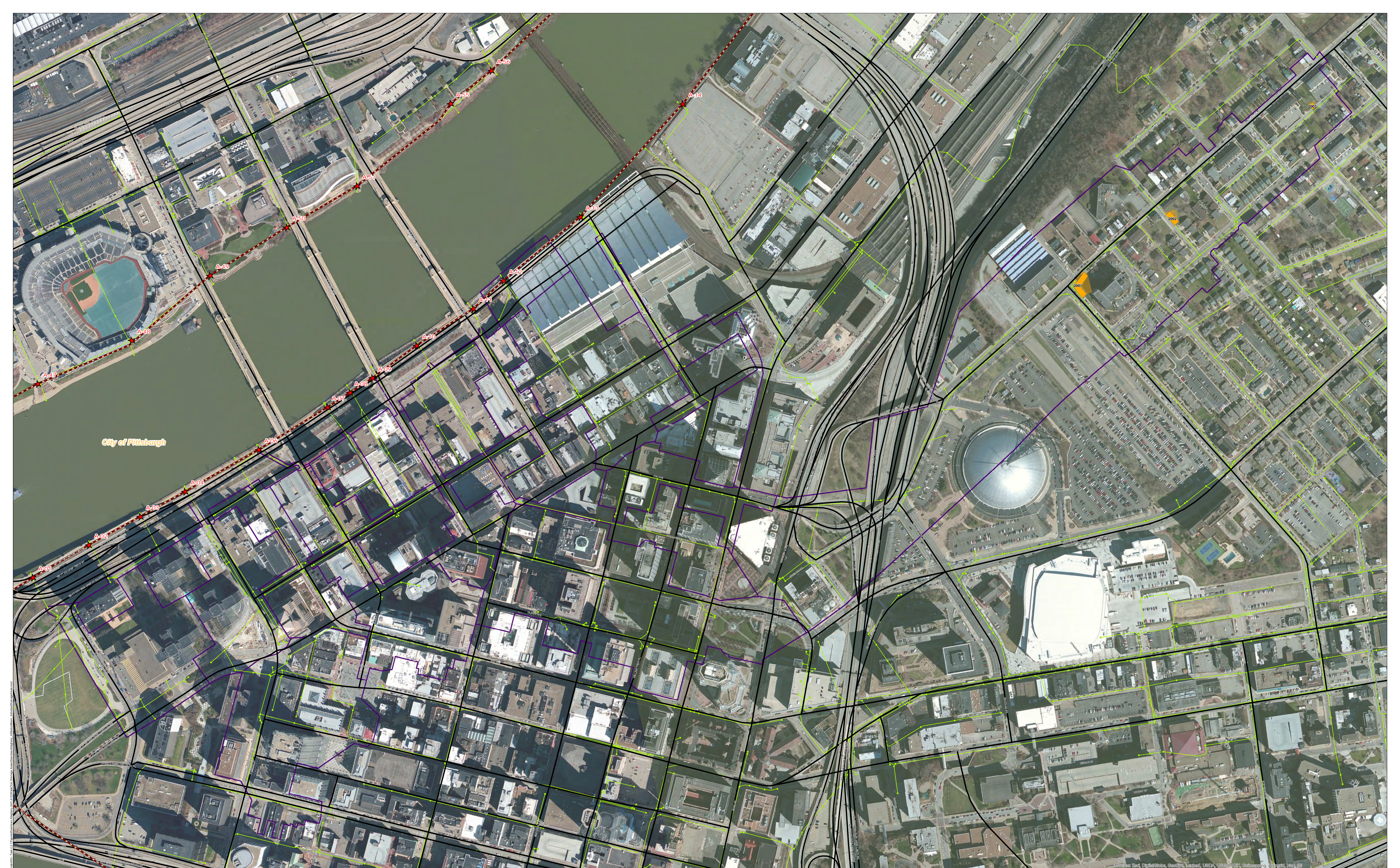
- ★ ALCOSAN Structures
- ALCOSAN Shallow-Cut Interceptor
- ALCOSAN Deep Tunnel Interceptor
- One Overall Manholes
- One Overall Sewerlines
- Bioretention Municipal Projects
- Bioretention Drainage Areas
- State Roads
- Combined Sewer Subcatchment
- Municipal Boundaries



**ALCOSAN GSI Project**  
 Downtown Allegheny (A-01 thru A-13)  
 Concept Municipal Bioretention GSI Projects  
 Individual Project Drainage Areas

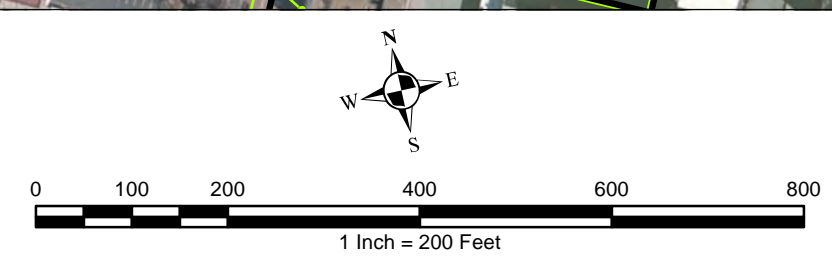
Aerial Imagery: © 2013 DigitalGlobe, GeoEye, Earthstar (United States), CNES/Airbus DS, USDA, USGS, AeroGRID, IGN, SIA, Mapbox, etc.  
 Aerial Imagery: © 2013 DigitalGlobe, GeoEye, Earthstar (United States), CNES/Airbus DS, USDA, USGS, AeroGRID, IGN, SIA, Mapbox, etc.





City of Pittsburgh

- ★ ALCOSAN Structures
- ALCOSAN Shallow-Cut Interceptor
- ALCOSAN Deep Tunnel Interceptor
- One Overall Manholes
- One Overall Sewerlines
- Infiltration Basin Municipal Projects
- Infiltration Basin Drainage Areas
- State Roads
- Combined Sewer Subcatchment
- Municipal Boundaries



**ALCOSAN GSI Project**  
 Downtown Allegheny (A-01 thru A-13)  
 Concept Municipal Infiltration Basin GSI Projects  
 Individual Project Drainage Areas



**Downtown Allegheny Concept Commercial / Institutional Permeable Pavement, Green Roof, and Special Case GSI Projects:  
Summary Table**

February 21, 2014  
Revised October 10, 2014

<b>ALCOSAN POC</b>	<b>Model Subcatchment</b>	<b>Concept Comm / Inst Project UID</b>	<b>BMP Type</b>	<b>Concept Municipal Project Area (acres)</b>	<b>Taxable (acres)</b>	<b>Exempt (acres)</b>	<b>Provisionally Exempt (acres)</b>	<b>Public ROW (acres)</b>
A-12-00	A-12-DWF-1/A-12-C-1	DALL_6001	CPP	0.103	0.007	0.000	0.000	0.096
A-12-00	A-12-DWF-1/A-12-C-1	DALL_6002	CPP	0.285	0.002	0.283	0.000	0.000
A-12-00	A-12-DWF-1/A-12-C-1	DALL_6003	CPP	0.132	0.047	0.000	0.000	0.085
A-12-00	A-12-DWF-1/A-12-C-1	DALL_6004	CPP	0.074	0.074	0.000	0.000	0.000
A-12-00	A-12-DWF-2/A-12-C-3	DALL_6005	CPP	0.904	0.000	0.887	0.000	0.017
A-12-00	A-12-DWF-2/A-12-C-3	DALL_6006	CPP	0.075	0.000	0.075	0.000	0.000
A-12-00	A-12-DWF-2/A-12-C-3	DALL_6007	CPP	0.168	0.002	0.003	0.000	0.163
A-12-00	A-12-DWF-2/A-12-C-3	DALL_6008	CPP	0.216	0.000	0.216	0.000	0.000
A-12-00	A-12-DWF-2/A-12-C-3	DALL_6009	CPP	0.140	0.139	0.000	0.000	0.001
A-12-00	A-12-DWF-2/A-12-C-3	DALL_6010	CPP	0.098	0.098	0.000	0.000	0.000
A-11-00	A-11-DWF-1/A-11-C-1	DALL_6011	CPP	0.083	0.042	0.000	0.000	0.041
A-11-00	A-11-DWF-1/A-11-C-1	DALL_6012	CPP	0.042	0.042	0.000	0.000	0.000
A-10-00	A-10-DWF-1/A-10-C-1	DALL_6013	CPP	0.288	0.288	0.000	0.000	0.000
A-10-00	A-10-DWF-1/A-10-C-1	DALL_6014	CPP	0.357	0.169	0.000	0.000	0.188
A-10-00	A-10-DWF-1/A-10-C-1	DALL_6015	CPP	0.594	0.349	0.003	0.000	0.242
A-10-00	A-10-DWF-1/A-10-C-1	DALL_6016	CPP	0.343	0.005	0.000	0.000	0.338
A-10-00	A-10-DWF-1/A-10-C-1	DALL_6017	CPP	0.124	0.076	0.000	0.000	0.048
A-10-00	A-10-DWF-1/A-10-C-1	DALL_6018	CPP	0.236	0.000	0.000	0.000	0.236
A-06-00	A-06-DWF-2/A-06-C-4	DALL_6019	CPP	0.125	0.051	0.000	0.000	0.074
A-04-00	A-04-DWF-2/A-04-C-2	DALL_6020	CPP	0.065	0.063	0.000	0.000	0.002
A-04-00	A-04-DWF-2/A-04-C-2	DALL_6021	CPP	0.153	0.031	0.000	0.000	0.122
A-04-00	A-04-DWF-2/A-04-C-2	DALL_6022	CPP	0.057	0.000	0.000	0.000	0.057
A-04-00	A-04-DWF-2/A-04-C-2	DALL_6023	CPP	0.175	0.058	0.000	0.000	0.117
A-04-00	A-04-DWF-2/A-04-C-2	DALL_6024	CPP	0.040	0.005	0.000	0.000	0.035
A-07-00	A-07-DWF-1/A-07-C-1	DALL_6025	CPP	0.222	0.222	0.000	0.000	0.000
A-07-00	A-07-DWF-1/A-07-C-1	DALL_6026	CPP	0.181	0.181	0.000	0.000	0.000
A-02-00	A-02-DWF-1/A-02-C-1	DALL_7001	GR	0.377	0.110	0.000	0.000	0.267
A-06-00	A-06-DWF-1/A-06-C-2	DALL_7002	GR	0.256	0.244	0.000	0.000	0.012

<b>ALCOSAN POC</b>	<b>Model Subcatchment</b>	<b>Concept Comm / Inst Project UID</b>	<b>BMP Type</b>	<b>Concept Municipal Project Area (acres)</b>	<b>Taxable (acres)</b>	<b>Exempt (acres)</b>	<b>Provisionally Exempt (acres)</b>	<b>Public ROW (acres)</b>
A-07-00	A-07-DWF-1/A-07-C-1	DALL_7003	GR	0.211	0.000	0.211	0.000	0.000
A-06-00	A-06-DWF-1/A-06-C-2	DALL_7004	GR	0.160	0.034	0.000	0.000	0.126
A-08-00	A-08-DWF-1/A-08-C-1	DALL_7005	GR	0.222	0.213	0.000	0.000	0.009
A-10-00	A-10-DWF-1/A-10-C-1	DALL_7006	GR	0.173	0.173	0.000	0.000	0.000
A-10-00	A-10-DWF-1/A-10-C-1	DALL_7007	GR	0.141	0.141	0.000	0.000	0.000
A-10-00	A-10-DWF-1/A-10-C-1	DALL_7008	GR	0.125	0.000	0.000	0.000	0.125
A-10-00	A-10-DWF-1/A-10-C-1	DALL_7009	GR	0.256	0.254	0.000	0.000	0.002
A-10-00	A-10-DWF-1/A-10-C-1	DALL_7010	GR	0.167	0.003	0.000	0.000	0.164
A-11-00	A-11-DWF-1/A-11-C-1	DALL_7011	GR	0.371	0.000	0.371	0.000	0.000
A-12-00	A-12-DWF-1/A-12-C-1	DALL_7012	GR	0.314	0.313	0.000	0.000	0.001
A-12-00	A-12-DWF-1/A-12-C-1	DALL_7013	GR	0.149	0.144	0.000	0.000	0.005
A-12-00	A-12-DWF-1/A-12-C-1	DALL_7014	GR	0.647	0.000	0.216	0.000	0.431
A-12-00	A-12-DWF-1/A-12-C-1	DALL_7015	GR	0.193	0.193	0.000	0.000	0.000
A-12-00	A-12-DWF-1/A-12-C-1	DALL_7016	GR	0.145	0.137	0.000	0.000	0.008
A-12-00	A-12-DWF-1/A-12-C-1	DALL_7017	GR	0.435	0.094	0.000	0.000	0.341
A-13-00	A-13-DWF-2/A-12-C-1	DALL_7018	GR	0.289	0.289	0.000	0.000	0.000
A-12-00	A-12-DWF-1/A-12-C-1	DALL_7019	GR	0.198	0.196	0.000	0.000	0.002
A-12-00	A-12-DWF-1/A-12-C-1	DALL_7020	GR	0.154	0.154	0.000	0.000	0.000
A-12-00	A-12-DWF-1/A-12-C-1	DALL_7021	GR	0.133	0.133	0.000	0.000	0.000
A-11-00	A-11-DWF-1/A-11-C-1	DALL_7022	GR	0.175	0.175	0.000	0.000	0.000
A-13-00	A-13-DWF-2/A-13-C-2	DALL_7023	GR	0.487	0.001	0.486	0.000	0.000
A-12-00	A-12-DWF-1/A-12-C-2	DALL_7024	GR	0.458	0.430	0.026	0.000	0.002
A-10-00	A-10-DWF-2/A-10-C-2	DALL_7025	GR	0.328	0.328	0.000	0.000	0.000
A-09-00	A-09-DWF-1/A-09-C-2-A	DALL_7026	GR	0.257	0.254	0.000	0.000	0.003
A-07-00	A-07-DWF-1/A-07-C-1	DALL_7027	GR	0.133	0.133	0.000	0.000	0.000
A-09-00	A-09-DWF-1/A-09-C-2-B	DALL_7028	GR	0.146	0.001	0.000	0.000	0.145
A-09-00	A-09-DWF-1/A-09-C-2-B	DALL_7029	GR	0.360	0.000	0.360	0.000	0.000
A-09-00	A-09-DWF-1/A-09-C-2-B	DALL_7030	GR	0.282	0.282	0.000	0.000	0.000
A-09-00	A-09-DWF-1/A-09-C-2-B	DALL_7031	GR	0.684	0.673	0.000	0.000	0.011
A-09-00	A-09-DWF-1/A-09-C-2-B	DALL_7032	GR	0.335	0.326	0.000	0.000	0.009
A-09-00	A-09-DWF-1/A-09-C-2-B	DALL_7033	GR	0.297	0.243	0.000	0.000	0.054
A-06-00	A-06-DWF-2/A-06-C-4	DALL_7034	GR	0.204	0.204	0.000	0.000	0.000
A-06-00	A-06-DWF-2/A-06-C-4	DALL_7035	GR	0.142	0.013	0.000	0.000	0.129
A-01-00	A-01-DWF-1/A-01-C-1	DALL_7036	GR	1.189	1.189	0.000	0.000	0.000



<b>ALCOSAN POC</b>	<b>Model Subcatchment</b>	<b>Concept Comm / Inst Project UID</b>	<b>BMP Type</b>	<b>Concept Municipal Project Area (acres)</b>	<b>Taxable (acres)</b>	<b>Exempt (acres)</b>	<b>Provisionally Exempt (acres)</b>	<b>Public ROW (acres)</b>
A-01-00	A-01-DWF-1/A-01-C-1	DALL_7037	GR	0.326	0.326	0.000	0.000	0.000
A-04-00	A-04-DWF-1/A-04-C-1	DALL_7038	GR	0.329	0.329	0.000	0.000	0.000
A-03-00	A-03-DWF-1/A-03-C-1	DALL_7039	GR	0.320	0.320	0.000	0.000	0.000
A-04-00	A-04-DWF-1/A-04-C-1	DALL_7040	GR	1.003	0.991	0.000	0.000	0.012
A-04-00	A-04-DWF-1/A-04-C-1	DALL_7041	GR	0.425	0.401	0.000	0.000	0.024
A-05-00	A-05-DWF-1/A-05-C-1	DALL_7042	GR	0.160	0.153	0.000	0.000	0.007
A-06-00	A-06-DWF-1/A-06-C-2	DALL_7043	GR	0.268	0.046	0.000	0.000	0.222
A-06-00	A-06-DWF-1/A-06-C-3	DALL_7044	GR	0.242	0.074	0.000	0.000	0.168
A-04-00	A-04-DWF-2/A-04-C-2	DALL_7045	GR	0.260	0.260	0.000	0.000	0.000
A-04-00	A-04-DWF-2/A-04-C-2	DALL_7046	GR	0.308	0.308	0.000	0.000	0.000
A-04-00	A-04-DWF-2/A-04-C-2	DALL_7047	GR	0.524	0.368	0.000	0.000	0.156
A-04-00	A-04-DWF-2/A-04-C-2	DALL_7048	GR	0.117	0.003	0.000	0.000	0.114
A-12-00	A-12-DWF-2/A-12-C-3	DALL_7049	GR	0.449	0.449	0.000	0.000	0.000
A-12-00	A-12-DWF-2/A-12-C-3	DALL_7050	GR	0.323	0.323	0.000	0.000	0.000
A-12-00	A-12-DWF-2/A-12-C-3	DALL_7051	GR	0.299	0.299	0.000	0.000	0.000
A-12-00	A-12-DWF-2/A-12-C-3	DALL_7052	GR	0.192	0.000	0.192	0.000	0.000
A-10-00	A-10-DWF-2/A-10-C-2	DALL_7053	GR	0.219	0.212	0.000	0.000	0.007
A-12-00	A-12-DWF-2/A-12-C-3	DALL_7054	GR	0.787	0.779	0.000	0.000	0.008
A-07-00	A-07-DWF-1/A-07-C-1	DALL_7055	GR	0.257	0.241	0.000	0.000	0.016
A-07-00	A-07-DWF-1/A-07-C-1	DALL_7056	GR	0.266	0.000	0.258	0.000	0.008
A-09-00	A-09-DWF-1/A-09-C-2-B	DALL_7057	GR	0.534	0.493	0.000	0.000	0.041
A-12-00	A-12-DWF-1/A-12-C-1	DALL_7058	GR	0.312	0.250	0.000	0.000	0.062
A-12-00	A-12-DWF-2/A-12-C-3	DALL_8001	SRPP	0.341	0.000	0.000	0.000	0.341
A-12-00	A-12-DWF-1	DALL_8002	SRPP	0.131	0.000	0.000	0.000	0.131
A-12-00	A-12-DWF-2/A-12-C-3	DALL_8003	SRPP	0.955	0.000	0.000	0.000	0.955
A-12-00	A-12-DWF-2/A-12-C-3	DALL_8004	SRPP	0.493	0.000	0.000	0.000	0.493
A-07-00	A-07-DWF-1/A-07-C-1	DALL_8005	SRPP	0.178	0.000	0.000	0.000	0.178
A-09-00	A-09-DWF-2/A-09-C-1	DALL_8006	SRPP	0.108	0.000	0.027	0.000	0.081
A-07-00	A-07-DWF-1/A-07-C-1	DALL_8007	SRPP	0.441	0.000	0.000	0.000	0.441
A-01-00	A-01-DWF-1/A-01-C-1	DALL_8008	SRPP	1.227	0.000	0.000	0.000	1.227
A-09-00	A-09-DWF-1/A-09-C-2-B	DALL_8009	SRPP	0.622	0.000	0.000	0.000	0.622
A-09-00	A-09-DWF-1/A-09-C-2-B	DALL_8010	SRPP	0.475	0.000	0.000	0.000	0.475
A-09-00	A-09-DWF-1/A-09-C-2-B	DALL_8011	SRPP	0.528	0.000	0.000	0.000	0.528
A-09-00	A-09-DWF-1/A-09-C-2-B	DALL_8012	SRPP	1.400	0.000	0.026	0.000	1.374

<b>ALCOSAN POC</b>	<b>Model Subcatchment</b>	<b>Concept Comm / Inst Project UID</b>	<b>BMP Type</b>	<b>Concept Municipal Project Area (acres)</b>	<b>Taxable (acres)</b>	<b>Exempt (acres)</b>	<b>Provisionally Exempt (acres)</b>	<b>Public ROW (acres)</b>
A-09-00	A-09-DWF-1/A-09-C-2-B	DALL_8013	SRPP	0.416	0.000	0.000	0.000	0.416
A-09-00	A-09-DWF-1/A-09-C-2-B	DALL_8014	SRPP	0.539	0.001	0.021	0.000	0.517
A-09-00	A-09-DWF-1/A-09-C-2-B	DALL_8015	SRPP	0.222	0.002	0.026	0.000	0.194
A-10-00	A-10-DWF-2/A-10-C-2	DALL_8016	SRPP	0.099	0.000	0.000	0.000	0.099
A-10-00	A-10-DWF-2/A-10-C-2	DALL_8017	SRPP	0.221	0.000	0.000	0.000	0.221
A-10-00	A-10-DWF-2/A-10-C-2	DALL_8018	SRPP	0.388	0.000	0.000	0.000	0.388
A-09-00	A-09-DWF-1/A-09-C-2-B	DALL_8019	SRPP	0.371	0.001	0.001	0.000	0.369
A-13-00	A-13-DWF-2/A-13-C-2	DALL_8020	SRPP	0.344	0.000	0.002	0.000	0.342
A-09-00	A-09-DWF-1/A-09-C-2-A	DALL_8021	SRPP	1.290	0.028	0.001	0.000	1.261
A-13-00	A-13-DWF-2/A-13-C-2	DALL_8022	SRPP	0.299	0.000	0.000	0.000	0.299
A-13-00	A-13-DWF-2/A-13-C-2	DALL_8023	SRPP	0.063	0.000	0.010	0.000	0.053
A-09-00	A-09-DWF-1/A-09-C-2-A	DALL_8024	SRPP	0.329	0.000	0.000	0.000	0.329
A-06-00	A-06-DWF-1/A-06-C-2	DALL_8025	SRPP	0.388	0.002	0.002	0.000	0.384
A-06-00	A-06-DWF-1/A-06-C-3	DALL_8026	SRPP	0.211	0.001	0.000	0.000	0.210
A-06-00	A-06-DWF-1/A-06-C-3	DALL_8027	SRPP	0.187	0.000	0.000	0.000	0.187
A-05-00	A-05-DWF-1/A-05-C-1	DALL_8028	SRPP	0.524	0.000	0.000	0.000	0.524
A-05-00	A-05-DWF-2/A-05-C-2	DALL_8029	SRPP	0.232	0.002	0.067	0.000	0.163
A-04-00	A-04-DWF-1/A-04-C-1	DALL_8030	SRPP	0.511	0.003	0.000	0.000	0.508
A-04-00	A-04-DWF-1/A-04-C-1	DALL_8031	SRPP	0.069	0.001	0.005	0.000	0.063
A-13-00	A-13-DWF-1/A-13-C-1	DALL_8032	SRPP	0.308	0.000	0.005	0.000	0.303
A-12-00	A-12-DWF-1/A-12-C-1	DALL_8033	SRPP	0.633	0.000	0.000	0.000	0.633
A-12-00	A-12-DWF-1/A-12-C-2	DALL_8034	SRPP	0.213	0.000	0.000	0.000	0.213
A-12-00	A-12-DWF-1/A-12-C-2	DALL_8035	SRPP	0.092	0.000	0.000	0.000	0.092
A-12-00	A-12-DWF-1/A-12-C-2	DALL_8036	SRPP	0.949	0.000	0.000	0.000	0.949
A-12-00	A-12-DWF-1/A-12-C-2	DALL_8037	SRPP	0.125	0.008	0.000	0.000	0.117
A-12-00	A-12-DWF-1/A-12-C-2	DALL_8038	SRPP	0.124	0.003	0.000	0.000	0.121
A-13-00	A-13-DWF-2/A-12-C-1	DALL_8039	SRPP	1.163	0.000	0.009	0.000	1.154
A-05-00	A-05-DWF-1/A-05-C-1	DALL_8040	SRPP	0.465	0.000	0.000	0.000	0.465
A-04-00	A-04-DWF-1/A-04-C-1	DALL_8041	SRPP	0.903	0.001	0.000	0.000	0.902
A-12-00	A-12-DWF-1/A-12-C-1	DALL_8042	SRPP	0.645	0.000	0.000	0.000	0.645
A-13-00	A-13-DWF-2/A-13-C-2	DALL_8043	SRPP	0.151	0.000	0.000	0.000	0.151
A-10-00	A-10-DWF-2/A-10-C-2	DALL_8044	SRPP	0.102	0.000	0.000	0.000	0.102
A-11-00	A-11-DWF-1/A-11-C-1	DALL_8045	SRPP	0.563	0.000	0.007	0.000	0.556
A-11-00	A-11-DWF-1/A-11-C-1	DALL_8046	SRPP	0.750	0.000	0.000	0.000	0.750



<b>ALCOSAN POC</b>	<b>Model Subcatchment</b>	<b>Concept Comm / Inst Project UID</b>	<b>BMP Type</b>	<b>Concept Municipal Project Area (acres)</b>	<b>Taxable (acres)</b>	<b>Exempt (acres)</b>	<b>Provisionally Exempt (acres)</b>	<b>Public ROW (acres)</b>
A-10-00	A-10-DWF-1/A-10-C-1	DALL_8047	SRPP	0.368	0.000	0.099	0.000	0.269
A-06-00	A-06-DWF-2/A-06-C-4	DALL_8048	SRPP	0.640	0.000	0.000	0.000	0.640
A-06-00	A-06-DWF-2/A-06-C-4	DALL_8049	SRPP	0.110	0.000	0.000	0.000	0.110
A-06-00	A-06-DWF-2/A-06-C-4	DALL_8050	SRPP	0.135	0.000	0.000	0.000	0.135
A-06-00	A-06-DWF-2/A-06-C-4	DALL_8051	SRPP	0.480	0.000	0.000	0.000	0.480
A-06-00	A-04-DWF-2/A-04-C-2	DALL_8052	SRPP	0.557	0.000	0.000	0.000	0.557
A-06-00	A-04-DWF-2/A-04-C-2	DALL_8053	SRPP	0.740	0.000	0.000	0.000	0.740
A-04-00	A-04-DWF-2/A-04-C-2	DALL_8054	SRPP	0.183	0.010	0.004	0.000	0.169
A-04-00	A-04-DWF-2/A-04-C-2	DALL_8055	SRPP	0.366	0.000	0.000	0.000	0.366
A-02-00	A-02-DWF-1/A-02-C-1	DALL_8056	SRPP	0.353	0.043	0.017	0.000	0.293
A-04-00	A-04-DWF-2/A-04-C-2	DALL_8057	SRPP	0.306	0.054	0.000	0.000	0.252
A-07-00	A-07-DWF-1/A-07-C-1	DALL_8058	SRPP	0.194	0.000	0.000	0.000	0.194



