

5.20 Study Area 20 – Brighton Heights

These findings apply to ALCOSAN Points of Connection O-25 and O-26, which include combined sewer systems in the City of Pittsburgh.

Brighton Heights - BMP GIS Features

The SUSTAIN BMP siting tool analysis resulted in identification of a total of 3,067 BMP GIS Features covering 97 acres, which consisted of the following:

Table 5.20-1 - TOTAL SUSTAIN BMP Features Output

SUSTAIN BMP Feature Type	Number of Features	Area of BMP Features (Acres)
Permeable Pavement	921	32
Bioretention	1,103	36
Infiltration Basin/Trenches	0	0
Vegetated Filter Strips	286	12
Grass Swales	748	17
Constructed Wetlands	9	< 1

Locations of all identified BMP GIS features are presented on the SUSTAIN BMP Features Figure.

Brighton Heights - Concept Municipal GSI Projects

Based on the BMP features, 121 concept Municipal GSI Projects were identified covering 14 total acres with a corresponding drainage area delineation of 181 total acres and consisted of the following:

Table 5.20-2 - Summary of Identified Concept Municipal GSI Projects

Concept GSI Technology	Number of Projects	GSI Project Area (Acres)	Project Drainage Area (Acres)
Permeable Pavement	32	11	119
Bioretention	89	3	62
Infiltration Basin/Trenches	0	0	0
Vegetated Filter Strips	0	0	0
Grass Swales	0	0	0
Constructed Wetlands	0	0	0

Project statistics including ALCOSAN POC, model subcatchment, BMP type, project area, area of project inside and outside of the public right-of-way, tributary drainage area, and tributary impervious drainage area are provided in the Concept Municipal Projects Table. Locations of all identified Concept Municipal GSI projects are presented in the Concept Municipal GSI Projects Figure (1) and the corresponding delineated tributary drainage areas are presented by BMP in the Individual Project Drainage Area Figures (2).

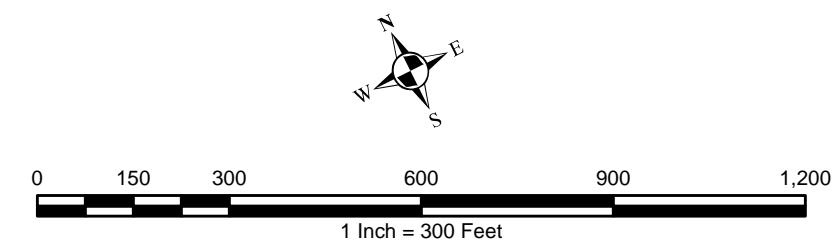
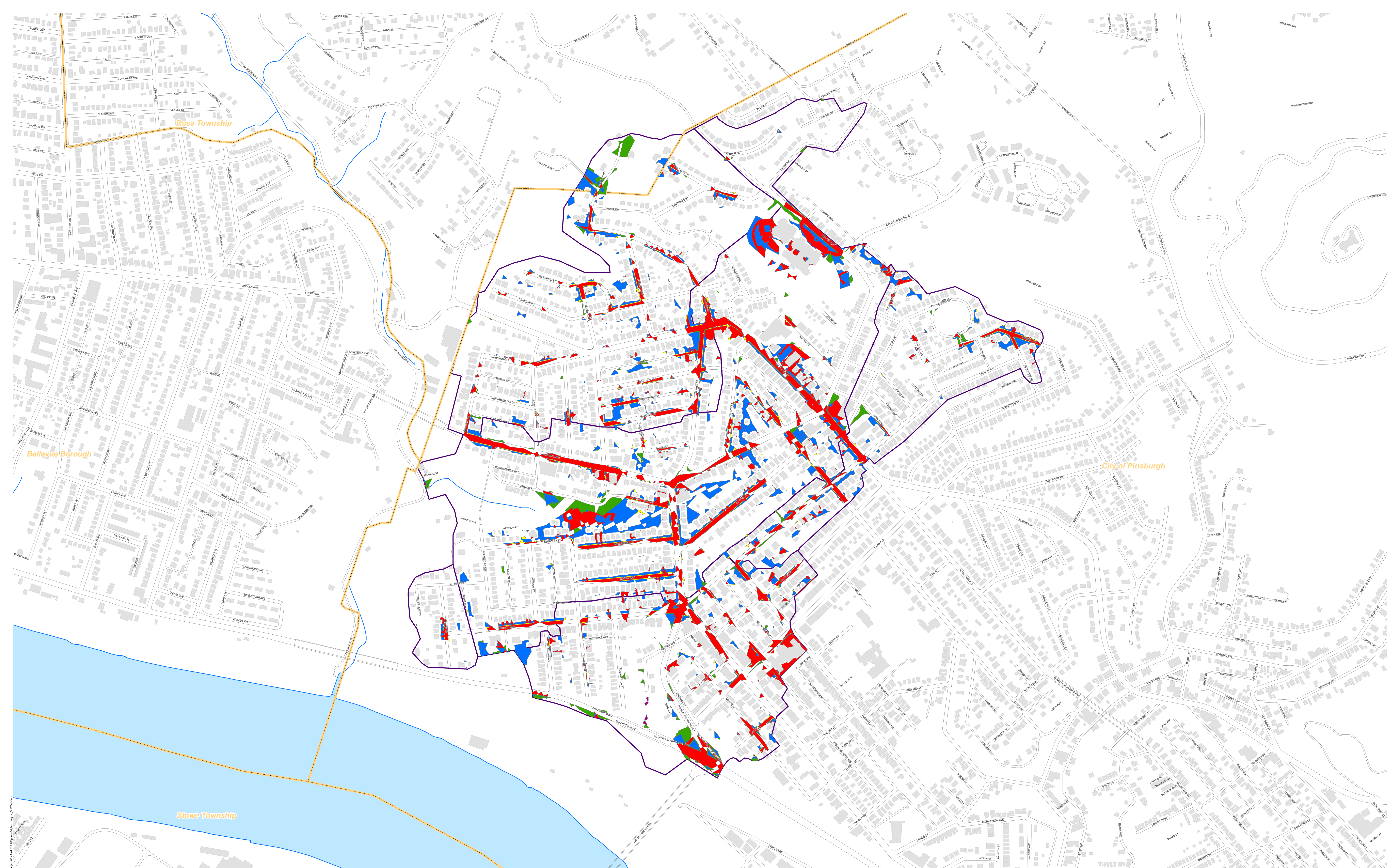
Brighton Heights - Concept Commercial/Institutional and Special Case GSI Projects

Based on the BMP features, 38 concept Commercial/Institutional and Special Case GSI Projects were identified covering 13 total acres and consisted of the following:

Table 5.20-3 - Summary of Identified Concept Commercial/Institutional and Special Case GSI Projects

Concept GSI Technology or Special Case Project Category	Number of Projects	GSI Project Area (Acres)
Commercial/Institutional Permeable Pavement	19	3
Commercial/Institutional Green Roofs	9	2
State Route Permeable Pavement	10	8
Busway Permeable Pavement	0	0
Busway Bioretention	0	0

Project statistics including ALCOSAN POC, model subcatchment, BMP type, project area, area of project taxable, exempt, provisionally exempt and in the public right-of-way are provided in Concept Commercial / Institutional GSI Projects Table. Locations of all identified Concept Commercial / Institutional GSI projects are presented in the Concept Commercial / Institutional GSI Projects Figure (1).



ALCOSAN GSI Project
O-25 through O-26
SUSTAIN BMP Features

Brighton Heights Concept Municipal Projects

June 13, 2014

Revised October 7, 2014

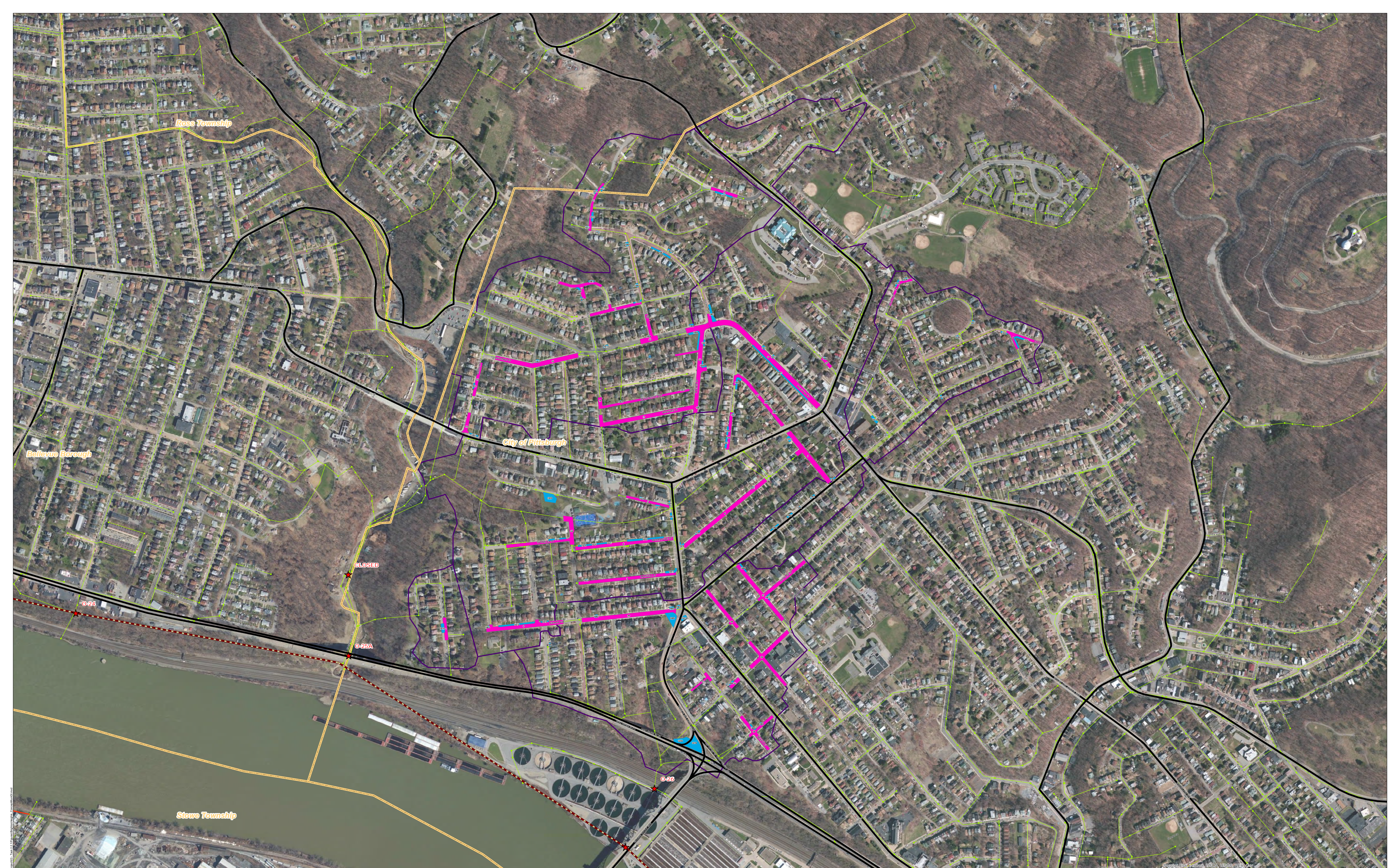
*Note: The drainage area presented in this table is representative of the individual drainage area tributary to each concept municipal project without any revisions to account for overlap, without engineering judgment revisions applied, and without the drainage areas being clipped to their corresponding model subcatchments.

ALCOSAN POC	Model Subcatchment	Concept Municipal Project UID	BMP Type	Concept Municipal Project Area (acres)	Public ROW or Parcel		Concept Municipal Project Individual Drainage Area (acres)*	Concept Municipal Project Individual Project Impervious Drainage Area (acres)*
					Area of Municipal Project in Public ROW (acres)	Area of Municipal Project outside of Public ROW (acres)		
O-25-00	O-25-Wea-O-25-Wea-M1	BHGT_1	PP	0.107	0.107	0.000	1.722	0.582
O-25-00	O-25-Blg-M2-2	BHGT_2	PP	0.486	0.486	0.000	2.450	0.978
O-25-00	O-25-Blg-M2-2	BHGT_3	PP	0.435	0.435	0.000	3.013	1.126
O-25-00	O-25-Blg-M2-2	BHGT_4	PP	0.477	0.477	0.000	5.133	1.926
O-25-00	O-25-Blg-M2-2	BHGT_5	PP	0.151	0.118	0.033	0.394	0.247
O-25-00	O-25-Blg-M2-2	BHGT_6	PP	0.576	0.576	0.000	3.497	1.096
O-25-00	O-25-Blg-M2-2	BHGT_7	PP	0.463	0.463	0.000	7.938	3.237
O-25-00	O-25-Blg-M2-3	BHGT_8	PP	0.187	0.187	0.000	0.546	0.241
O-25-00	O-25-Blg-M2-3	BHGT_9	PP	0.127	0.127	0.000	0.493	0.163
O-25-00	O-25-Bri-PWSA-10-3	BHGT_10	PP	0.116	0.116	0.000	5.284	1.498
O-25-00	O-25-Bri-PWSA-10-3	BHGT_11	PP	0.171	0.170	0.001	16.308	0.968
O-25-00	O-25-Bri-PWSA-10-3	BHGT_12	PP	0.235	0.235	0.000	1.421	0.595
O-25-00	O-25-Bri-PWSA-10-3	BHGT_13	PP	0.246	0.246	0.000	0.697	0.341
O-25-00	O-25-Bri-PWSA-10-3	BHGT_14	PP	0.103	0.103	0.000	0.974	0.318
O-25-00	O-25-Bri-PWSA-10-3	BHGT_15	PP	0.151	0.151	0.000	3.096	1.061
O-25-00	O-25-Bri-PWSA-10-3	BHGT_16	PP	0.514	0.514	0.000	6.411	2.485
O-25-00	O-25-Bri-PWSA-10-3	BHGT_17	PP	0.570	0.570	0.000	2.872	1.153
O-25-00	O-25-Bri-PWSA-10-3	BHGT_18	PP	0.353	0.350	0.003	1.372	0.586
O-25-00	O-25-Blg-M2-2	BHGT_19	PP	1.083	1.083	0.000	17.602	6.444
O-25-00	O-25-Blg-M2-2	BHGT_20	PP	0.163	0.163	0.000	1.751	0.508
O-25-00	O-25-Blg-M2-2	BHGT_21	PP	0.355	0.355	0.000	7.542	3.275
O-25-00	O-25-Bri-PWSA-10-3	BHGT_22	PP	0.742	0.742	0.000	2.049	0.944
O-25-00	O-25-Bri-PWSA-10-3	BHGT_23	PP	0.229	0.228	0.001	1.916	0.903
O-25-00	O-25-Blg-M2-2	BHGT_24	PP	0.458	0.456	0.002	13.083	4.746
O-25-00	O-25-Blg-M2-2	BHGT_25	PP	0.062	0.062	0.000	0.086	0.072
O-26-00	O-26-00-M1	BHGT_26	PP	0.515	0.515	0.000	1.954	0.910
O-26-00	O-26-00-M1	BHGT_27	PP	0.653	0.653	0.000	2.564	1.201
O-26-00	O-26-00-M1	BHGT_28	PP	0.235	0.235	0.000	1.671	0.868

ALCOSAN POC	Model Subcatchment	Concept Municipal Project UID	BMP Type	Concept Municipal Project Area (acres)	Public ROW or Parcel		Concept Municipal Project Individual Drainage Area (acres)*	Concept Municipal Project Individual Project Impervious Drainage Area (acres)*
					Area of Municipal Project in Public ROW (acres)	Area of Municipal Project outside of Public ROW (acres)		
O-26-00	O-26-00-M1	BHGT_29	PP	0.516	0.516	0.000	2.617	1.407
O-26-00	O-26-00-M1	BHGT_30	PP	0.308	0.308	0.000	1.289	0.595
O-26-00	O-26-00-M1	BHGT_31	PP	0.093	0.093	0.000	1.061	0.632
O-26-00	O-26-00-M1	BHGT_32	PP	0.066	0.066	0.000	0.270	0.159
O-25-00	O-25-Blg-M2-2	BHGT_1001	BR	0.021	0.021	0.000	0.102	0.071
O-25-00	O-25-Bri-PWSA-10-3	BHGT_1002	BR	0.007	0.006	0.001	0.070	0.023
O-25-00	O-25-Blg-M2-2	BHGT_1003	BR	0.011	0.011	0.000	0.018	0.006
O-25-00	O-25-Blg-M2-3	BHGT_1004	BR	0.024	0.024	0.000	0.082	0.004
O-25-00	O-25-Blg-M2-3	BHGT_1005	BR	0.019	0.019	0.000	3.078	0.853
O-25-00	O-25-Blg-M2-3	BHGT_1006	BR	0.008	0.008	0.000	0.812	0.253
O-25-00	O-25-Blg-M2-3	BHGT_1007	BR	0.014	0.014	0.000	0.022	0.011
O-25-00	O-25-Blg-M2-2	BHGT_1008	BR	0.016	0.016	0.000	0.600	0.268
O-25-00	O-25-Blg-M2-3	BHGT_1009	BR	0.005	0.005	0.000	0.072	0.002
O-25-00	O-25-Blg-M2-3	BHGT_1010	BR	0.006	0.006	0.000	7.901	2.815
O-25-00	O-25-Blg-M2-3	BHGT_1011	BR	0.012	0.012	0.000	0.045	0.005
O-25-00	O-25-Bri-PWSA-10-3	BHGT_1012	BR	0.010	0.010	0.000	0.015	0.003
O-25-00	O-25-Bri-PWSA-10-3	BHGT_1013	BR	0.018	0.018	0.000	0.489	0.124
O-25-00	O-25-Wea-O-25-Wea-M1	BHGT_1014	BR	0.043	0.015	0.028	0.058	0.018
O-25-00	O-25-Blg-M2-2	BHGT_1015	BR	0.085	0.085	0.000	0.260	0.060
O-25-00	O-25-Blg-M2-2	BHGT_1016	BR	0.017	0.017	0.000	0.077	0.023
O-25-00	O-25-Blg-M2-2	BHGT_1017	BR	0.042	0.041	0.001	1.484	0.533
O-25-00	O-25-Blg-M2-2	BHGT_1018	BR	0.011	0.011	0.000	0.035	0.010
O-25-00	O-25-Blg-M2-2	BHGT_1019	BR	0.041	0.041	0.000	0.164	0.020
O-25-00	O-25-Blg-M2-2	BHGT_1020	BR	0.142	0.018	0.124	3.123	1.000
O-25-00	O-25-Blg-M2-2	BHGT_1021	BR	0.008	0.008	0.000	0.023	0.001
O-25-00	O-25-Blg-M2-2	BHGT_1022	BR	0.095	0.089	0.006	1.116	0.418
O-25-00	O-25-Blg-M2-2	BHGT_1023	BR	0.007	0.007	0.000	1.172	0.402
O-25-00	O-25-Blg-M2-2	BHGT_1024	BR	0.008	0.008	0.000	0.017	0.002
O-25-00	O-25-Blg-M2-2	BHGT_1025	BR	0.077	0.077	0.000	1.250	0.418
O-25-00	O-25-Blg-M2-2	BHGT_1026	BR	0.008	0.008	0.000	0.017	0.006
O-25-00	O-25-Blg-M2-2	BHGT_1027	BR	0.016	0.001	0.015	0.024	0.003
O-25-00	O-25-Blg-M2-2	BHGT_1028	BR	0.019	0.004	0.015	0.065	0.028
O-25-00	O-25-Blg-M2-2	BHGT_1029	BR	0.018	0.018	0.000	0.195	0.093
O-25-00	O-25-Blg-M2-2	BHGT_1030	BR	0.013	0.013	0.000	0.025	0.003

ALCOSAN POC	Model Subcatchment	Concept Municipal Project UID	BMP Type	Concept Municipal Project Area (acres)	Public ROW or Parcel		Concept Municipal Project Individual Drainage Area (acres)*	Concept Municipal Project Individual Project Impervious Drainage Area (acres)*
					Area of Municipal Project in Public ROW (acres)	Area of Municipal Project outside of Public ROW (acres)		
O-25-00	O-25-Blg-M2-2	BHGT_1031	BR	0.007	0.007	0.000	0.031	0.008
O-25-00	O-25-Blg-M2-2	BHGT_1032	BR	0.027	0.010	0.017	0.209	0.073
O-25-00	O-25-Blg-M2-3	BHGT_1033	BR	0.035	0.019	0.016	0.207	0.110
O-25-00	O-25-Blg-M2-3	BHGT_1034	BR	0.057	0.055	0.002	0.184	0.040
O-25-00	O-25-Blg-M2-3	BHGT_1035	BR	0.017	0.016	0.001	0.036	0.016
O-25-00	O-25-Blg-M2-3	BHGT_1036	BR	0.011	0.008	0.003	0.050	0.010
O-25-00	O-25-Blg-M2-3	BHGT_1037	BR	0.014	0.001	0.013	0.018	0.003
O-25-00	O-25-Blg-M2-3	BHGT_1038	BR	0.017	0.017	0.000	0.079	0.012
O-25-00	O-25-Blg-M2-3	BHGT_1039	BR	0.017	0.017	0.000	0.021	0.001
O-25-00	O-25-Blg-M2-2	BHGT_1040	BR	0.008	0.007	0.001	0.012	0.005
O-25-00	O-25-Blg-M2-2	BHGT_1041	BR	0.145	0.143	0.002	2.484	1.136
O-25-00	O-25-Blg-M2-2	BHGT_1042	BR	0.013	0.003	0.010	0.174	0.059
O-25-00	O-25-Blg-M2-2	BHGT_1043	BR	0.019	0.007	0.012	2.888	0.783
O-25-00	O-25-Blg-M2-2	BHGT_1044	BR	0.043	0.039	0.004	2.370	1.011
O-25-00	O-25-Blg-M2-2	BHGT_1045	BR	0.008	0.008	0.000	0.457	0.129
O-25-00	O-25-Blg-M2-2	BHGT_1046	BR	0.021	0.013	0.008	0.129	0.029
O-25-00	O-25-Blg-M2-2	BHGT_1047	BR	0.030	0.017	0.013	0.332	0.099
O-25-00	O-25-Blg-M2-2	BHGT_1048	BR	0.009	0.009	0.000	0.034	0.012
O-25-00	O-25-Blg-M2-2	BHGT_1049	BR	0.008	0.008	0.000	0.037	0.012
O-25-00	O-25-Blg-M2-2	BHGT_1050	BR	0.009	0.007	0.002	0.102	0.012
O-25-00	O-25-Bri-PWSA-10-3	BHGT_1051	BR	0.019	0.019	0.000	0.101	0.037
O-25-00	O-25-Bri-PWSA-10-3	BHGT_1052	BR	0.013	0.013	0.000	0.028	0.005
O-25-00	O-25-Bri-PWSA-10-3	BHGT_1053	BR	0.017	0.012	0.005	0.903	0.320
O-25-00	O-25-Bri-PWSA-10-3	BHGT_1054	BR	0.006	0.006	0.000	0.010	0.002
O-25-00	O-25-Bri-PWSA-10-3	BHGT_1055	BR	0.005	0.003	0.002	0.007	0.002
O-25-00	O-25-Bri-PWSA-10-3	BHGT_1056	BR	0.090	0.064	0.026	0.259	0.075
O-25-00	O-25-Bri-PWSA-10-3	BHGT_1057	BR	0.019	0.018	0.001	0.198	0.142
O-25-00	O-25-Bri-PWSA-10-3	BHGT_1058	BR	0.034	0.034	0.000	0.098	0.014
O-25-00	O-25-Bri-PWSA-10-3	BHGT_1059	BR	0.007	0.007	0.000	0.020	0.013
O-25-00	O-25-Bri-PWSA-10-3	BHGT_1060	BR	0.025	0.013	0.012	0.123	0.038
O-25-00	O-25-Blg-M2-2	BHGT_1061	BR	0.067	0.067	0.000	1.194	0.489
O-25-00	O-25-Bri-PWSA-10-3	BHGT_1062	BR	0.020	0.020	0.000	2.758	0.689
O-25-00	O-25-Bri-PWSA-10-3	BHGT_1063	BR	0.059	0.054	0.005	0.069	0.023
O-25-00	O-25-Bri-PWSA-10-3	BHGT_1064	BR	0.018	0.009	0.009	0.020	0.008

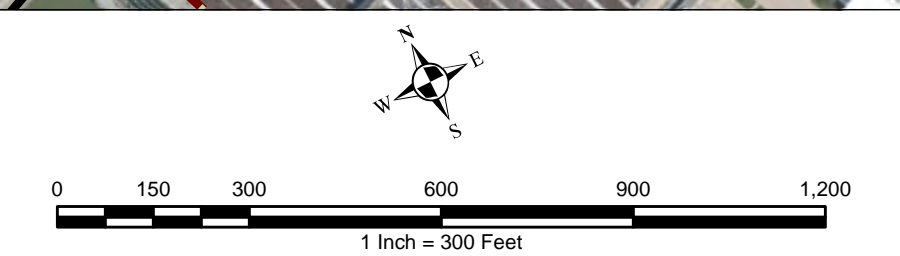
ALCOSAN POC	Model Subcatchment	Concept Municipal Project UID	BMP Type	Concept Municipal Project Area (acres)	Public ROW or Parcel		Concept Municipal Project Individual Drainage Area (acres)*	Concept Municipal Project Individual Project Impervious Drainage Area (acres)*
					Area of Municipal Project in Public ROW (acres)	Area of Municipal Project outside of Public ROW (acres)		
O-25-00	O-25-Bri-PWSA-10-3	BHGT_1065	BR	0.015	0.009	0.006	0.072	0.018
O-25-00	O-25-Bri-PWSA-10-3	BHGT_1066	BR	0.021	0.021	0.000	0.270	0.125
O-25-00	O-25-Bri-PWSA-10-3	BHGT_1067	BR	0.017	0.017	0.000	0.108	0.055
O-25-00	O-25-Bri-PWSA-10-3	BHGT_1068	BR	0.018	0.018	0.000	0.025	0.008
O-25-00	O-25-Bri-PWSA-10-3	BHGT_1069	BR	0.011	0.011	0.000	0.017	0.004
O-25-00	O-25-Bri-PWSA-10-3	BHGT_1070	BR	0.008	0.008	0.000	0.823	0.292
O-25-00	O-25-Bri-PWSA-10-3	BHGT_1071	BR	0.011	0.011	0.000	0.013	0.002
O-25-00	O-25-Bri-PWSA-10-3	BHGT_1072	BR	0.028	0.027	0.001	0.186	0.064
O-25-00	O-25-Bri-PWSA-10-3	BHGT_1073	BR	0.019	0.019	0.000	0.658	0.014
O-25-00	O-25-Bri-PWSA-10-3	BHGT_1074	BR	0.013	0.013	0.000	14.724	0.747
O-25-00	O-25-Bri-PWSA-10-3	BHGT_1075	BR	0.011	0.000	0.011	0.396	0.056
O-25-00	O-25-Bri-PWSA-10-3	BHGT_1076	BR	0.047	0.045	0.002	4.604	1.377
O-26-00	O-26-00-M1	BHGT_1077	BR	0.030	0.016	0.014	0.189	0.115
O-26-00	O-26-00-M1	BHGT_1078	BR	0.107	0.026	0.081	0.283	0.005
O-26-00	O-26-00-M1	BHGT_1079	BR	0.207	0.149	0.058	0.233	0.123
O-26-00	O-26-00-M1	BHGT_1080	BR	0.009	0.009	0.000	0.027	0.004
O-26-00	O-26-00-M1	BHGT_1082	BR	0.015	0.010	0.005	0.108	0.042
O-26-00	O-26-00-M1	BHGT_1083	BR	0.022	0.013	0.009	0.175	0.037
O-26-00	O-26-00-M1	BHGT_1084	BR	0.015	0.012	0.003	0.042	0.008
O-26-00	O-26-00-M1	BHGT_1085	BR	0.134	0.053	0.081	0.296	0.113
O-26-00	O-26-00-M1	BHGT_1086	BR	0.028	0.028	0.000	0.273	0.124
O-26-00	O-26-00-M1	BHGT_1087	BR	0.025	0.024	0.001	0.048	0.015
O-26-00	O-26-00-M1	BHGT_1088	BR	0.008	0.006	0.002	0.247	0.146
O-26-00	O-26-00-M1	BHGT_1089	BR	0.019	0.019	0.000	0.056	0.012
O-26-00	O-26-00-M1	BHGT_1090	BR	0.015	0.015	0.000	0.100	0.048



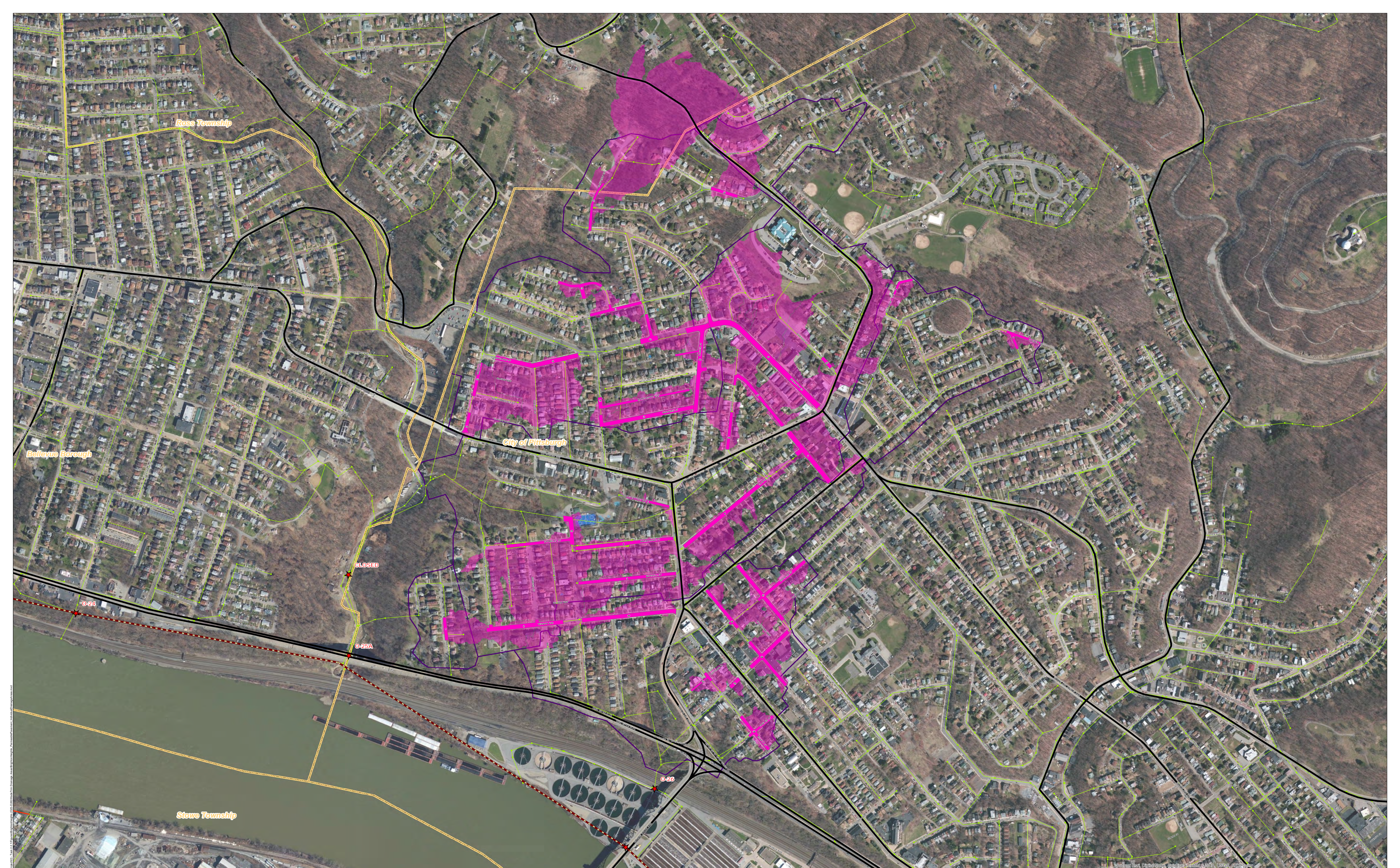
- ★ ALCOSAN Structures
- ALCOSAN Shallow-Cut Interceptor
- ALCOSAN Deep Tunnel Interceptor
- One Overall Manholes
- One Overall Sewerlines

- Bioretention
- Permeable Pavement

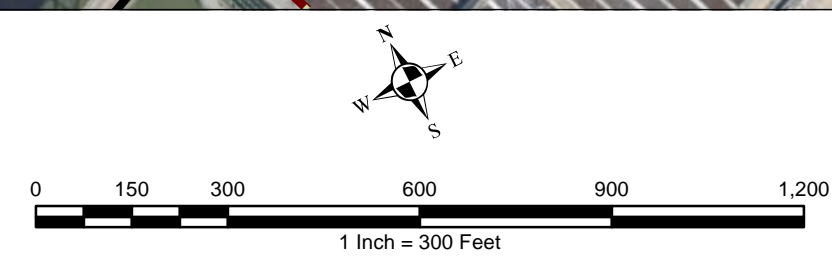
- State Roads
- Combined Sewer Subcatchment
- Municipal Boundaries



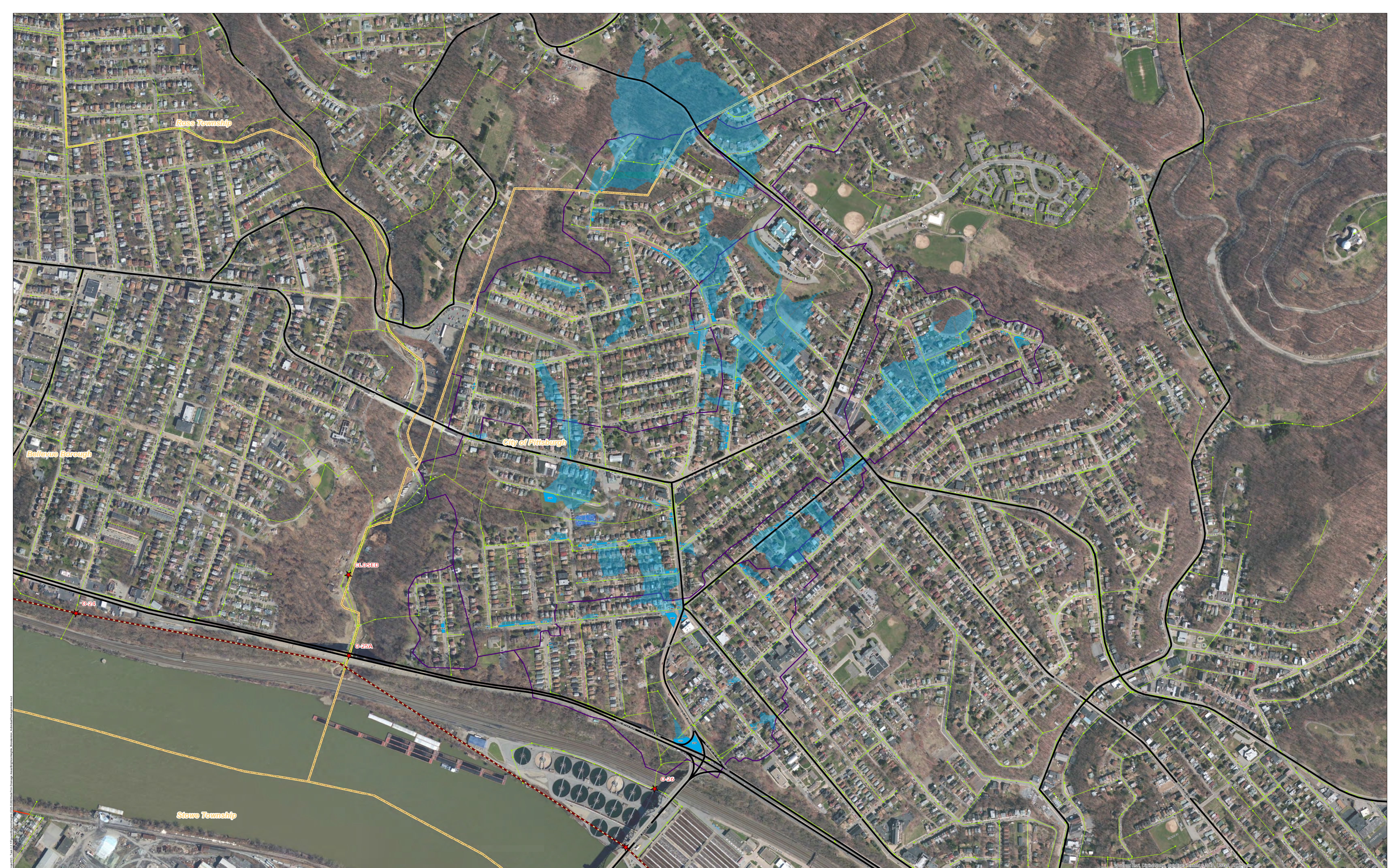
ALCOSAN GSI Project
 O-25 through O-26
 Concept Municipal GSI Projects



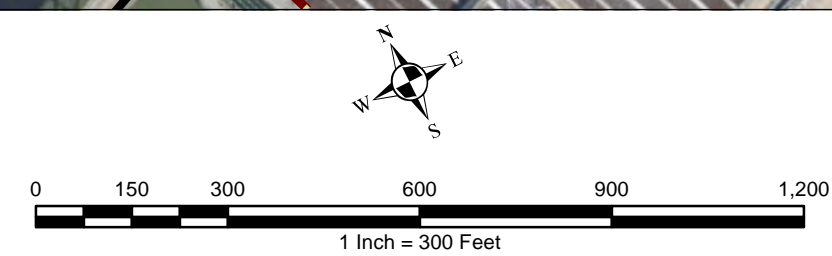
- ★ ALCOSAN Structures
- ALCOSAN Shallow-Cut Interceptor
- ALCOSAN Deep Tunnel Interceptor
- One Overall Manholes
- One Overall Sewerlines
- Permeable Pavement Municipal Projects
- Permeable Pavement Drainage Areas
- State Roads
- Combined Sewer Subcatchment
- Municipal Boundaries



ALCOSAN GSI Project
 Brighton Heights (O-25 thru O-26)
 Concept Municipal Permeable Pavement GSI Projects
 Individual Project Drainage Areas



- ★ ALCOSAN Structures
- ALCOSAN Shallow-Cut Interceptor
- ALCOSAN Deep Tunnel Interceptor
- One Overall Manholes
- One Overall Sewerlines
- Bioretention Municipal Projects
- Bioretention Drainage Areas
- State Roads
- Combined Sewer Subcatchment
- Municipal Boundaries



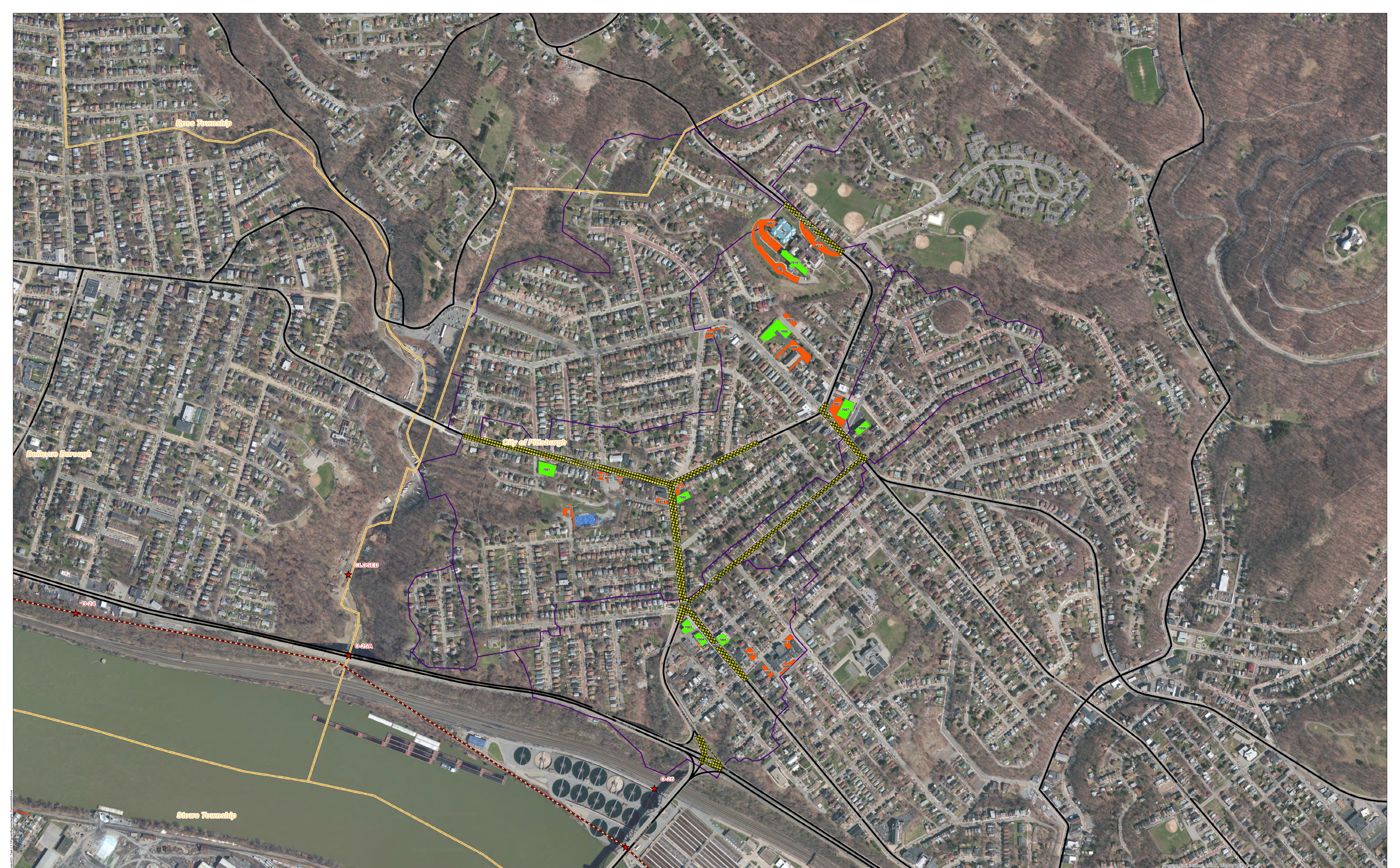
ALCOSAN GSI Project
 Brighton Heights (O-25 thru O-26)
 Concept Municipal Bioretention GSI Projects
 Individual Project Drainage Areas

**Brighton Heights Concept Commercial / Institutional Permeable Pavement, Green Roof, and Special Case GSI Projects:
Summary Table**

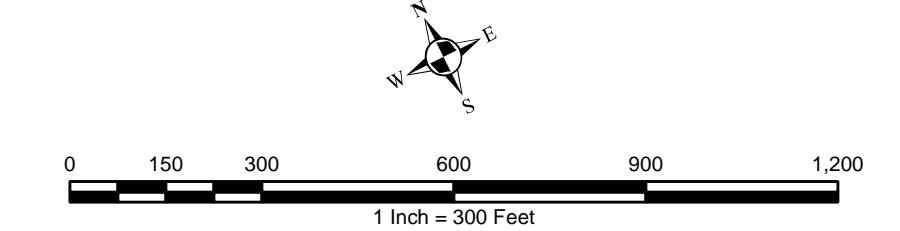
February 21, 2014
Revised October 10, 2014

ALCOSAN POC	Model Subcatchment	Concept Comm / Inst Project UID	BMP Type	Concept Municipal Project Area (acres)	Taxable (acres)	Exempt (acres)	Provisionally Exempt (acres)	Public ROW (acres)
O-25-00	O-25-Blg-M2-2	BHGT_6001	CPP	0.999	0.000	0.999	0.000	0.000
O-25-00	O-25-Blg-M2-2	BHGT_6002	CPP	0.100	0.000	0.098	0.000	0.002
O-26-00	O-26-00-M1	BHGT_6003	CPP	0.115	0.115	0.000	0.000	0.000
O-26-00	O-26-00-M1	BHGT_6004	CPP	0.087	0.024	0.000	0.000	0.063
O-25-00	O-25-Blg-M2-2	BHGT_6005	CPP	0.127	0.000	0.014	0.035	0.078
O-25-00	O-25-Blg-M2-2	BHGT_6006	CPP	0.373	0.001	0.371	0.000	0.001
O-25-00	O-25-Blg-M2-2	BHGT_6007	CPP	0.313	0.304	0.000	0.000	0.009
O-25-00	O-25-Blg-M2-2	BHGT_6008	CPP	0.093	0.017	0.000	0.000	0.076
O-26-00	O-26-00-M1	BHGT_6009	CPP	0.103	0.000	0.037	0.000	0.066
O-25-00	O-25-Blg-M2-2	BHGT_6010	CPP	0.033	0.000	0.000	0.000	0.033
O-25-00	O-25-Blg-M2-2	BHGT_6011	CPP	0.043	0.036	0.000	0.000	0.007
O-25-00	O-25-Blg-M2-2	BHGT_6012	CPP	0.026	0.001	0.000	0.000	0.025
O-25-00	O-25-Blg-M2-2	BHGT_6013	CPP	0.053	0.039	0.000	0.000	0.014
O-25-00	O-25-Blg-M2-2	BHGT_6014	CPP	0.412	0.000	0.412	0.000	0.000
O-25-00	O-25-Blg-M2-2	BHGT_6015	CPP	0.024	0.015	0.000	0.000	0.009
O-26-00	O-26-00-M1	BHGT_6016	CPP	0.028	0.028	0.000	0.000	0.000
O-25-00	O-25-Blg-M2-2	BHGT_6017	CPP	0.071	0.062	0.000	0.000	0.009
O-25-00	O-25-Blg-M2-2	BHGT_6018	CPP	0.070	0.070	0.000	0.000	0.000
O-26-00	O-26-00-M1	BHGT_6019	CPP	0.113	0.000	0.111	0.000	0.002
O-25-00	O-25-Blg-M2-2	BHGT_7001	GR	0.284	0.002	0.000	0.000	0.282
O-25-00	O-25-Blg-M2-2	BHGT_7002	GR	0.137	0.005	0.000	0.000	0.132
O-26-00	O-26-00-M1	BHGT_7003	GR	0.149	0.147	0.000	0.000	0.002
O-26-00	O-26-00-M1	BHGT_7004	GR	0.126	0.126	0.000	0.000	0.000
O-26-00	O-26-00-M1	BHGT_7005	GR	0.121	0.117	0.000	0.000	0.004
O-25-00	O-25-Blg-M2-2	BHGT_7007	GR	0.276	0.276	0.000	0.000	0.000

ALCOSAN POC	Model Subcatchment	Concept Comm / Inst Project UID	BMP Type	Concept Municipal Project Area (acres)	Taxable (acres)	Exempt (acres)	Provisionally Exempt (acres)	Public ROW (acres)
O-25-00	O-25-Blg-M2-3	BHGT_7008	GR	0.139	0.000	0.139	0.000	0.000
O-25-00	O-25-Blg-M2-2	BHGT_7009	GR	0.422	0.000	0.422	0.000	0.000
O-25-00	O-25-Blg-M2-2	BHGT_7010	GR	0.299	0.000	0.299	0.000	0.000
O-25-00	O-25-Blg-M2-2	BHGT_8001	SRPP	0.638	0.001	0.000	0.000	0.637
O-25-00	O-25-Blg-M2-2	BHGT_8002	SRPP	1.122	0.006	0.000	0.000	1.116
O-25-00	O-25-Blg-M2-2	BHGT_8003	SRPP	0.744	0.000	0.000	0.000	0.744
O-25-00	O-25-Blg-M2-2	BHGT_8004	SRPP	1.808	0.001	0.006	0.000	1.801
O-25-00	O-25-Blg-M2-2	BHGT_8005	SRPP	0.350	0.000	0.000	0.000	0.350
O-25-00	O-25-Blg-M2-3	BHGT_8006	SRPP	1.262	0.000	0.000	0.000	1.262
O-26-00	O-26-00-M1	BHGT_8007	SRPP	0.800	0.000	0.000	0.000	0.800
O-26-00	O-26-00-M1	BHGT_8008	SRPP	0.379	0.000	0.000	0.000	0.379
O-26-00	O-26-00-M1	BHGT_8009	SRPP	0.263	0.000	0.000	0.000	0.263
O-26-00	O-26-00-M1	BHGT_8010	SRPP	0.563	0.000	0.000	0.000	0.563



- ★ ALCOSAN Structures
- ALCOSAN Shallow-Cut Interceptor
- ALCOSAN Deep Tunnel Interceptor
- Special Case
- Concept Commercial / Institutional Permeable Pavement Projects
- Concept Green Roof Projects
- State Roads
- Combined Sewer Subcatchment
- Municipal Boundaries



ALCOSAN GSI Project
 Brighton Heights (O-25 thru O-26)
 Concept Commercial / Institutional,
 Green Roof, and Special Case GSI Projects