

5.19 Study Area 19 – Corliss

These findings apply to ALCOSAN Point of Connection O-13, which includes combined sewer systems in the City of Pittsburgh.

Corliss - BMP GIS Features

The SUSTAIN BMP siting tool analysis resulted in identification of a total of 4,061 BMP GIS Features covering 185 acres, which consisted of the following:

Table 5.19-1 - TOTAL SUSTAIN BMP Features Output

SUSTAIN BMP Feature Type	Number of Features	Area of BMP Features (Acres)
Permeable Pavement	887	32
Bioretention	1,181	71
Infiltration Basin/Trenches	507	31
Vegetated Filter Strips	539	28
Grass Swales	884	21
Constructed Wetlands	63	1

Locations of all identified BMP GIS features are presented on the SUSTAIN BMP Features Figure.

Corliss - Concept Municipal GSI Projects

Based on the BMP features, 147 concept Municipal GSI Projects were identified covering 16 total acres with a corresponding drainage area delineation of 248 total acres and consisted of the following:

Table 5.19-2 - Summary of Identified Concept Municipal GSI Projects

Concept GSI Technology	Number of Projects	GSI Project Area (Acres)	Project Drainage Area (Acres)
Permeable Pavement	43	13	180
Bioretention	96	2	55
Infiltration Basin/Trenches	8	1	13
Vegetated Filter Strips	0	0	0
Grass Swales	0	0	0
Constructed Wetlands	0	0	0

Project statistics including ALCOSAN POC, model subcatchment, BMP type, project area, area of project inside and outside of the public right-of-way, tributary drainage area, and tributary impervious drainage area are provided in the Concept Municipal Projects Table. Locations of all identified Concept Municipal GSI projects are presented in the Concept Municipal GSI Projects Figure (1) and the corresponding delineated tributary drainage areas are presented by BMP in the Individual Project Drainage Area Figures (3).

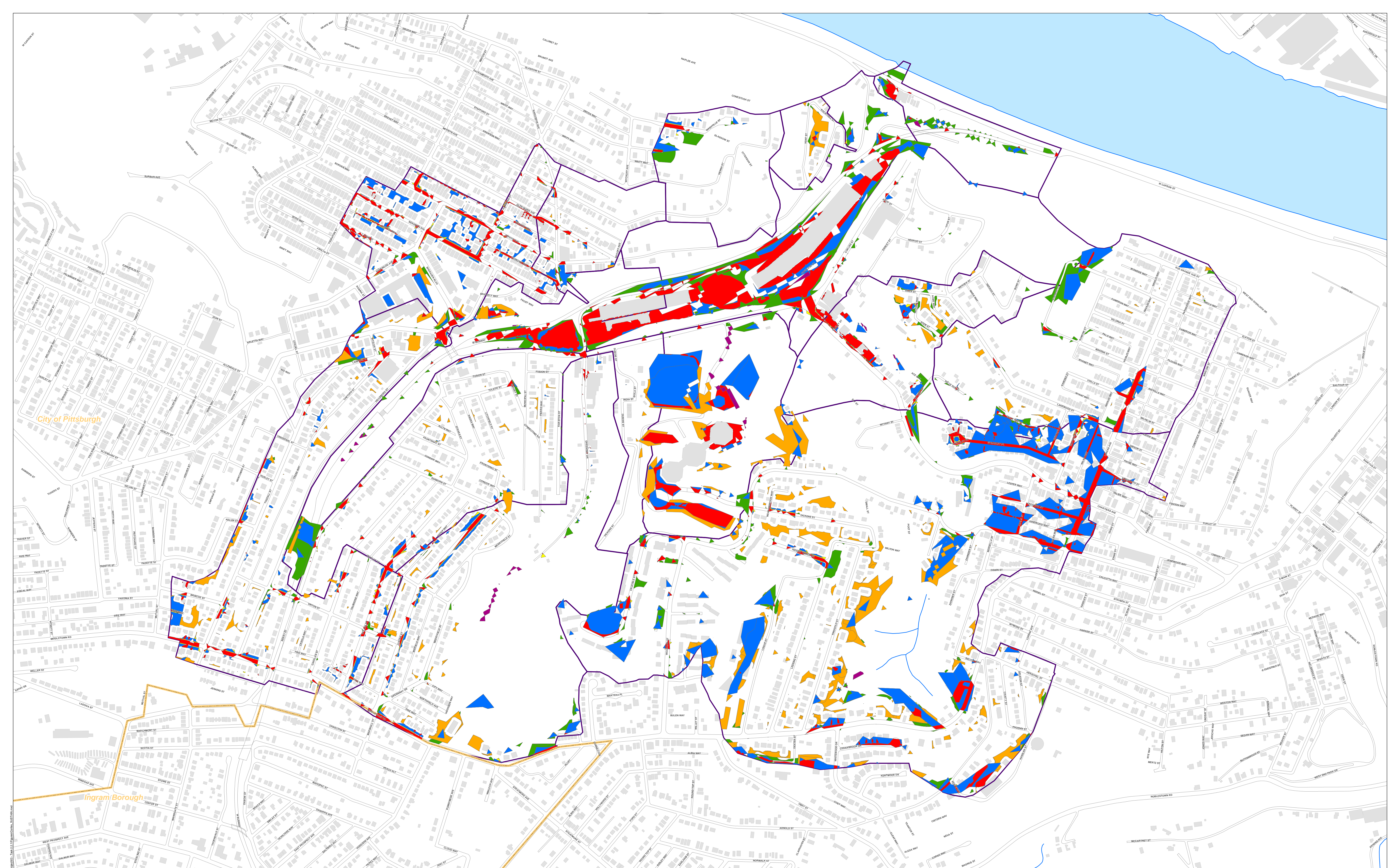
Corliss - Concept Commercial/Institutional and Special Case GSI Projects

Based on the BMP features, 49 concept Commercial/Institutional and Special Case GSI Projects were identified covering 34 total acres and consisted of the following:

Table 5.19-3 - Summary of Identified Concept Commercial/Institutional and Special Case GSI Projects

Concept GSI Technology or Special Case Project Category	Number of Projects	GSI Project Area (Acres)
Commercial/Institutional Permeable Pavement	20	17
Commercial/Institutional Green Roofs	17	12
State Route Permeable Pavement	12	5
Busway Permeable Pavement	0	0
Busway Bioretention	0	0

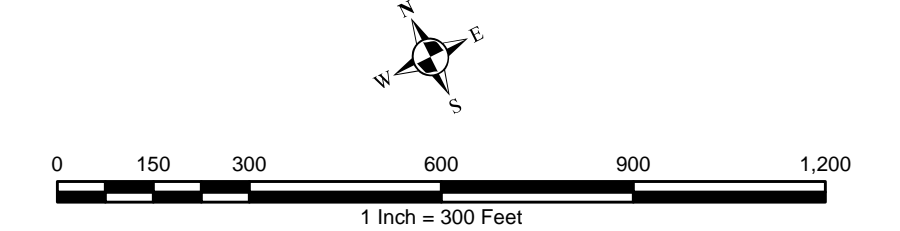
Project statistics including ALCOSAN POC, model subcatchment, BMP type, project area, area of project taxable, exempt, provisionally exempt and in the public right-of-way are provided in Concept Commercial / Institutional GSI Projects Table. Locations of all identified Concept Commercial / Institutional GSI projects are presented in the Concept Commercial / Institutional GSI Projects Figure (1).



City of Pittsburgh

Ingram Borough

- Permeable Pavement
- Bioretention Basin
- Infiltration Basin / Trench
- Vegetated Filter Strips
- Grass Swales
- Constructed Wetlands
- Combined Sewer Subcatchment
- Municipal Boundaries



Corliss Concept Municipal Projects

June 13, 2014

Revised October 7, 2014

*Note: The drainage area presented in this table is representative of the individual drainage area tributary to each concept municipal project without any revisions to account for overlap, without engineering judgment revisions applied, and without the drainage areas being clipped to their corresponding model subcatchments.

ALCOSAN POC	Model Subcatchment	Concept Municipal Project UID	BMP Type	Concept Municipal Project Area (acres)	Public ROW or Parcel		Concept Municipal Project Individual Drainage Area (acres)*	Concept Municipal Project Individual Project Impervious Drainage Area (acres)*
					Area of Municipal Project in Public ROW (acres)	Area of Municipal Project outside of Public ROW (acres)		
O-13-00	SUB-O1300-328416S992	CORL_1	PP	0.247	0.247	0.000	2.500	0.891
O-13-00	SUB-O1300-328416S992	CORL_2	PP	0.293	0.293	0.000	2.131	0.795
O-13-00	SUB-O1300-329415S991	CORL_3	PP	0.155	0.155	0.000	0.352	0.186
O-13-00	SUB-O1300-330414S002	CORL_4	PP	0.635	0.635	0.000	1.817	0.957
O-13-00	SUB-O1300-330414S002	CORL_5	PP	0.233	0.233	0.000	8.853	2.872
O-13-00	SUB-O1300-330413S007	CORL_6	PP	0.213	0.173	0.040	3.805	0.713
O-13-00	SUB-O1300-330414S002	CORL_7	PP	0.220	0.215	0.005	6.837	2.148
O-13-00	SUB-O1300-330414S002	CORL_8	PP	0.544	0.544	0.000	2.956	1.545
O-13-00	SUB-O1300-330413S007	CORL_9	PP	0.477	0.477	0.000	24.182	8.242
O-13-00	SUB-O1300-330414S002	CORL_10	PP	0.364	0.362	0.002	3.899	1.847
O-13-00	SUB-O1300-330414S002	CORL_11	PP	0.089	0.087	0.002	1.346	0.565
O-13-00	SUB-O1300-330414S002	CORL_12	PP	0.476	0.476	0.000	7.218	2.850
O-13-00	SUB-O1300-330414S002	CORL_13	PP	0.499	0.493	0.006	2.272	1.224
O-13-00	SUB-O1300-330414S002	CORL_14	PP	0.054	0.042	0.012	0.472	0.301
O-13-00	SUB-O1300-330414S002	CORL_15	PP	0.285	0.285	0.000	2.539	0.833
O-13-00	SUB-O1300-330414S002	CORL_16	PP	0.427	0.422	0.005	13.497	4.145
O-13-00	SUB-O1300-330414S002	CORL_17	PP	0.419	0.000	0.419	5.765	1.763
O-13-00	SUB-O1300-327416S010	CORL_18	PP	0.147	0.147	0.000	0.922	0.279
O-13-00	SUB-O1300-327416S010	CORL_19	PP	0.753	0.753	0.000	4.737	2.166
O-13-00	SUB-O1300-327416S010	CORL_20	PP	0.555	0.555	0.000	2.967	1.205
O-13-00	SUB-O1300-327416S010	CORL_21	PP	0.302	0.302	0.000	2.409	1.020
O-13-00	SUB-O1300-327416S010	CORL_22	PP	0.252	0.252	0.000	1.045	0.505
O-13-00	SUB-O1300-327416S010	CORL_23	PP	0.075	0.075	0.000	0.572	0.182
O-13-00	SUB-O1300-327416S010	CORL_24	PP	0.214	0.214	0.000	1.784	0.756
O-13-00	SUB-O1300-327416S010	CORL_25	PP	0.124	0.124	0.000	2.588	0.805
O-13-00	SUB-O1300-327416S010	CORL_27	PP	0.232	0.232	0.000	13.217	6.257
O-13-00	SUB-O1300-327416S008	CORL_28	PP	0.270	0.270	0.000	2.628	1.086
O-13-00	SUB-O1300-327416S008	CORL_29	PP	0.294	0.289	0.005	0.673	0.287

ALCOSAN POC	Model Subcatchment	Concept Municipal Project UID	BMP Type	Concept Municipal Project Area (acres)	Public ROW or Parcel		Concept Municipal Project Individual Drainage Area (acres)*	Concept Municipal Project Individual Project Impervious Drainage Area (acres)*
					Area of Municipal Project in Public ROW (acres)	Area of Municipal Project outside of Public ROW (acres)		
O-13-00	SUB-O1300-327416S008	CORL_30	PP	0.593	0.593	0.000	1.720	0.733
O-13-00	SUB-O1300-327416S008	CORL_31	PP	0.095	0.095	0.000	3.912	1.027
O-13-00	SUB-O1300-327416S008	CORL_32	PP	0.108	0.108	0.000	8.081	2.177
O-13-00	SUB-O1300-327416S008	CORL_33	PP	0.288	0.288	0.000	2.289	0.735
O-13-00	SUB-O1300-327416S008	CORL_34	PP	0.580	0.573	0.007	1.745	0.727
O-13-00	SUB-O1300-328415S012	CORL_35	PP	0.292	0.292	0.000	0.986	0.377
O-13-00	SUB-O1300-327415S023	CORL_36	PP	1.104	1.104	0.000	7.365	2.461
O-13-00	SUB-O1300-330414S002	CORL_37	PP	0.241	0.240	0.001	1.255	0.432
O-13-00	SUB-O1300-330414S002	CORL_38	PP	0.164	0.164	0.000	0.181	0.111
O-13-00	SUB-O1300-330415S990	CORL_39	PP	0.088	0.088	0.000	25.482	2.784
O-13-00	SUB-O1300-330414S002	CORL_40	PP	0.114	0.114	0.000	0.306	0.135
O-13-00	SUB-O1300-330414S002	CORL_41	PP	0.127	0.104	0.023	0.173	0.110
O-13-00	SUB-O1300-330414S002	CORL_43	PP	0.294	0.015	0.279	0.882	0.436
O-13-00	SUB-O1300-327416S010	CORL_44	PP	0.104	0.104	0.000	0.856	0.349
O-13-00	SUB-O1300-328415S012	CORL_45	PP	0.045	0.045	0.000	1.094	0.301
O-13-00	SUB-O1300-327416S008	CORL_1001	BR	0.051	0.050	0.001	0.157	0.043
O-13-00	SUB-O1300-327416S008	CORL_1004	BR	0.014	0.014	0.000	0.333	0.121
O-13-00	SUB-O1300-327416S008	CORL_1005	BR	0.014	0.014	0.000	0.024	0.002
O-13-00	SUB-O1300-327416S008	CORL_1007	BR	0.012	0.012	0.000	0.260	0.102
O-13-00	SUB-O1300-327416S008	CORL_1008	BR	0.010	0.010	0.000	0.158	0.051
O-13-00	SUB-O1300-327416S008	CORL_1009	BR	0.006	0.006	0.000	0.049	0.016
O-13-00	SUB-O1300-327416S008	CORL_1010	BR	0.005	0.005	0.000	0.032	0.013
O-13-00	SUB-O1300-327416S008	CORL_1011	BR	0.007	0.007	0.000	0.250	0.087
O-13-00	SUB-O1300-327416S008	CORL_1013	BR	0.023	0.023	0.000	0.044	0.011
O-13-00	SUB-O1300-327416S008	CORL_1014	BR	0.031	0.031	0.000	0.124	0.050
O-13-00	SUB-O1300-328415S012	CORL_1015	BR	0.018	0.018	0.000	0.037	0.007
O-13-00	SUB-O1300-328415S012	CORL_1016	BR	0.009	0.009	0.000	0.028	0.010
O-13-00	SUB-O1300-328415S012	CORL_1019	BR	0.035	0.021	0.014	1.756	0.384
O-13-00	SUB-O1300-328415S012	CORL_1020	BR	0.007	0.004	0.003	0.013	0.005
O-13-00	SUB-O1300-327415S023	CORL_1023	BR	0.013	0.010	0.003	0.056	0.020
O-13-00	SUB-O1300-327415S023	CORL_1024	BR	0.022	0.022	0.000	0.208	0.096
O-13-00	SUB-O1300-327415S023	CORL_1025	BR	0.009	0.009	0.000	2.822	0.826
O-13-00	SUB-O1300-327415S023	CORL_1026	BR	0.018	0.017	0.001	0.070	0.028
O-13-00	SUB-O1300-327415S023	CORL_1027	BR	0.014	0.012	0.002	0.022	0.008

ALCOSAN POC	Model Subcatchment	Concept Municipal Project UID	BMP Type	Concept Municipal Project Area (acres)	Public ROW or Parcel		Concept Municipal Project Individual Drainage Area (acres)*	Concept Municipal Project Individual Project Impervious Drainage Area (acres)*
					Area of Municipal Project in Public ROW (acres)	Area of Municipal Project outside of Public ROW (acres)		
O-13-00	SUB-O1300-327415S023	CORL_1028	BR	0.045	0.045	0.000	0.222	0.060
O-13-00	SUB-O1300-327415S023	CORL_1031	BR	0.013	0.013	0.000	0.109	0.028
O-13-00	SUB-O1300-330414S002	CORL_1032	BR	0.217	0.000	0.217	1.814	0.483
O-13-00	SUB-O1300-330414S002	CORL_1034	BR	0.010	0.009	0.001	0.018	0.001
O-13-00	SUB-O1300-330414S002	CORL_1035	BR	0.005	0.005	0.000	0.023	0.000
O-13-00	SUB-O1300-330414S002	CORL_1036	BR	0.015	0.012	0.003	0.026	0.004
O-13-00	SUB-O1300-330414S002	CORL_1037	BR	0.013	0.013	0.000	0.026	0.009
O-13-00	SUB-O1300-330414S002	CORL_1038	BR	0.009	0.008	0.001	0.038	0.013
O-13-00	SUB-O1300-330414S002	CORL_1039	BR	0.010	0.000	0.010	0.024	0.012
O-13-00	SUB-O1300-330414S002	CORL_1040	BR	0.009	0.009	0.000	0.085	0.024
O-13-00	SUB-O1300-330414S002	CORL_1041	BR	0.008	0.008	0.000	0.063	0.017
O-13-00	SUB-O1300-330414S002	CORL_1042	BR	0.007	0.007	0.000	0.007	0.001
O-13-00	SUB-O1300-330414S002	CORL_1043	BR	0.009	0.008	0.001	0.028	0.009
O-13-00	SUB-O1300-330414S002	CORL_1044	BR	0.053	0.003	0.050	1.799	0.327
O-13-00	SUB-O1300-330414S002	CORL_1045	BR	0.005	0.005	0.000	0.006	0.001
O-13-00	SUB-O1300-330414S002	CORL_1046	BR	0.004	0.004	0.000	0.008	0.001
O-13-00	SUB-O1300-330414S002	CORL_1047	BR	0.032	0.032	0.000	0.055	0.014
O-13-00	SUB-O1300-330414S002	CORL_1048	BR	0.059	0.012	0.047	0.228	0.067
O-13-00	SUB-O1300-330414S002	CORL_1049	BR	0.057	0.057	0.000	1.867	0.880
O-13-00	SUB-O1300-330414S002	CORL_1050	BR	0.219	0.039	0.180	24.243	6.714
O-13-00	SUB-O1300-330414S002	CORL_1051	BR	0.017	0.002	0.015	0.077	0.029
O-13-00	SUB-O1300-330414S002	CORL_1052	BR	0.012	0.005	0.007	0.114	0.027
O-13-00	SUB-O1300-327416S008	CORL_1053	BR	0.003	0.003	0.000	0.031	0.011
O-13-00	SUB-O1300-327416S008	CORL_1054	BR	0.020	0.020	0.000	0.122	0.025
O-13-00	SUB-O1300-327416S008	CORL_1055	BR	0.010	0.007	0.003	0.056	0.006
O-13-00	SUB-O1300-327416S008	CORL_1057	BR	0.014	0.014	0.000	2.270	0.713
O-13-00	SUB-O1300-328415S018	CORL_1058	BR	0.081	0.080	0.001	0.715	0.020
O-13-00	SUB-O1300-327416S010	CORL_1059	BR	0.016	0.011	0.005	0.487	0.256
O-13-00	SUB-O1300-327416S010	CORL_1061	BR	0.014	0.014	0.000	0.037	0.008
O-13-00	SUB-O1300-327416S010	CORL_1062	BR	0.019	0.007	0.012	0.278	0.102
O-13-00	SUB-O1300-327416S010	CORL_1064	BR	0.006	0.002	0.004	0.012	0.000
O-13-00	SUB-O1300-327416S010	CORL_1065	BR	0.020	0.020	0.000	0.058	0.038
O-13-00	SUB-O1300-327416S010	CORL_1066	BR	0.018	0.007	0.011	0.023	0.003
O-13-00	SUB-O1300-328416S992	CORL_1067	BR	0.029	0.021	0.008	0.044	0.014

ALCOSAN POC	Model Subcatchment	Concept Municipal Project UID	BMP Type	Concept Municipal Project Area (acres)	Public ROW or Parcel		Concept Municipal Project Individual Drainage Area (acres)*	Concept Municipal Project Individual Project Impervious Drainage Area (acres)*
					Area of Municipal Project in Public ROW (acres)	Area of Municipal Project outside of Public ROW (acres)		
O-13-00	SUB-O1300-328416S992	CORL_1068	BR	0.038	0.018	0.020	0.133	0.022
O-13-00	SUB-O1300-328416S992	CORL_1069	BR	0.012	0.012	0.000	0.023	0.010
O-13-00	SUB-O1300-330414S002	CORL_1070	BR	0.040	0.000	0.040	0.071	0.043
O-13-00	SUB-O1300-330414S002	CORL_1072	BR	0.017	0.016	0.001	0.104	0.031
O-13-00	SUB-O1300-330414S002	CORL_1073	BR	0.007	0.007	0.000	2.914	1.112
O-13-00	SUB-O1300-330414S002	CORL_1077	BR	0.046	0.046	0.000	0.070	0.019
O-13-00	SUB-O1300-330414S002	CORL_1078	BR	0.004	0.004	0.000	0.006	0.000
O-13-00	SUB-O1300-330414S002	CORL_1079	BR	0.003	0.003	0.000	0.017	0.002
O-13-00	SUB-O1300-330414S002	CORL_1080	BR	0.029	0.029	0.000	0.259	0.080
O-13-00	SUB-O1300-330413S007	CORL_1081	BR	0.009	0.009	0.000	0.047	0.010
O-13-00	SUB-O1300-330415S990	CORL_1082	BR	0.007	0.007	0.000	0.042	0.002
O-13-00	SUB-O1300-330415S990	CORL_1083	BR	0.014	0.014	0.000	0.048	0.027
O-13-00	SUB-O1300-329415S991	CORL_1085	BR	0.009	0.009	0.000	0.170	0.068
O-13-00	SUB-O1300-329415S991	CORL_1086	BR	0.011	0.011	0.000	0.034	0.011
O-13-00	SUB-O1300-329415S991	CORL_1087	BR	0.009	0.009	0.000	0.012	0.000
O-13-00	SUB-O1300-328416S992	CORL_1088	BR	0.011	0.011	0.000	0.016	0.004
O-13-00	SUB-O1300-328416S992	CORL_1089	BR	0.014	0.014	0.000	0.017	0.002
O-13-00	SUB-O1300-327416S010	CORL_1095	BR	0.009	0.009	0.000	0.646	0.177
O-13-00	SUB-O1300-327416S010	CORL_1097	BR	0.017	0.017	0.000	2.111	0.872
O-13-00	SUB-O1300-327416S010	CORL_1098	BR	0.020	0.020	0.000	0.026	0.000
O-13-00	SUB-O1300-327416S008	CORL_1099	BR	0.016	0.016	0.000	0.614	0.087
O-13-00	SUB-O1300-327416S008	CORL_1100	BR	0.010	0.010	0.000	0.015	0.001
O-13-00	SUB-O1300-327416S008	CORL_1101	BR	0.009	0.009	0.000	0.013	0.002
O-13-00	SUB-O1300-327416S008	CORL_1102	BR	0.015	0.015	0.000	0.057	0.023
O-13-00	SUB-O1300-327416S008	CORL_1103	BR	0.008	0.008	0.000	0.113	0.044
O-13-00	SUB-O1300-327415S023	CORL_1106	BR	0.052	0.026	0.026	0.513	0.213
O-13-00	SUB-O1300-327415S023	CORL_1107	BR	0.009	0.008	0.001	0.020	0.008
O-13-00	SUB-O1300-330413S007	CORL_1108	BR	0.005	0.005	0.000	0.141	0.045
O-13-00	SUB-O1300-330415S990	CORL_1109	BR	0.005	0.005	0.000	2.313	0.458
O-13-00	SUB-O1300-330414S002	CORL_1110	BR	0.032	0.004	0.028	0.039	0.016
O-13-00	SUB-O1300-330414S002	CORL_1111	BR	0.064	0.041	0.023	1.591	0.447
O-13-00	SUB-O1300-330414S002	CORL_1113	BR	0.003	0.000	0.003	0.011	0.001
O-13-00	SUB-O1300-330414S002	CORL_1114	BR	0.006	0.003	0.003	0.020	0.006
O-13-00	SUB-O1300-330414S002	CORL_1115	BR	0.006	0.003	0.003	0.017	0.010

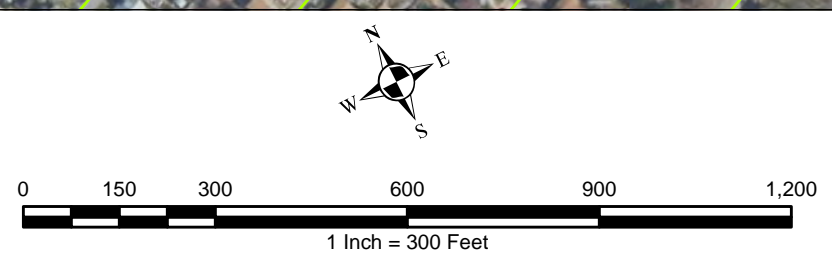
ALCOSAN POC	Model Subcatchment	Concept Municipal Project UID	BMP Type	Concept Municipal Project Area (acres)	Public ROW or Parcel		Concept Municipal Project Individual Drainage Area (acres)*	Concept Municipal Project Individual Project Impervious Drainage Area (acres)*
					Area of Municipal Project in Public ROW (acres)	Area of Municipal Project outside of Public ROW (acres)		
O-13-00	SUB-O1300-330414S002	CORL_1116	BR	0.008	0.005	0.003	0.023	0.007
O-13-00	SUB-O1300-330414S002	CORL_1117	BR	0.008	0.006	0.002	0.208	0.059
O-13-00	SUB-O1300-330414S002	CORL_1118	BR	0.002	0.002	0.000	0.008	0.000
O-13-00	SUB-O1300-330414S002	CORL_1119	BR	0.003	0.003	0.000	0.023	0.009
O-13-00	SUB-O1300-330414S002	CORL_1120	BR	0.020	0.000	0.020	0.132	0.073
O-13-00	SUB-O1300-330414S002	CORL_1121	BR	0.014	0.000	0.014	0.079	0.073
O-13-00	SUB-O1300-330414S002	CORL_1122	BR	0.003	0.002	0.001	0.008	0.001
O-13-00	SUB-O1300-330414S002	CORL_1123	BR	0.007	0.003	0.004	0.352	0.173
O-13-00	SUB-O1300-330414S002	CORL_1124	BR	0.004	0.003	0.001	0.015	0.007
O-13-00	SUB-O1300-327415S023	CORL_2001	IB	0.026	0.026	0.000	0.044	0.000
O-13-00	SUB-O1300-330414S002	CORL_2002	IB	0.014	0.013	0.001	0.042	0.002
O-13-00	SUB-O1300-330414S002	CORL_2003	IB	0.088	0.001	0.087	0.213	0.052
O-13-00	SUB-O1300-327416S008	CORL_2004	IB	0.050	0.032	0.018	0.226	0.088
O-13-00	SUB-O1300-330414S002	CORL_2005	IB	0.196	0.063	0.133	11.087	3.506
O-13-00	SUB-O1300-330415S990	CORL_2006	IB	0.038	0.008	0.030	0.264	0.094
O-13-00	SUB-O1300-328415S012	CORL_2007	IB	0.062	0.030	0.032	0.508	0.213
O-13-00	SUB-O1300-327416S008	CORL_2008	IB	0.037	0.012	0.025	0.467	0.285



- ★ ALCOSAN Structures
- ALCOSAN Shallow-Cut Interceptor
- ALCOSAN Deep Tunnel Interceptor
- One Overall Manholes
- One Overall Sewerlines

- Municipal Projects**
- Infiltration Basin
 - Bioretention
 - Permeable Pavement

- State Roads
- Combined Sewer Subcatchment
- Municipal Boundaries

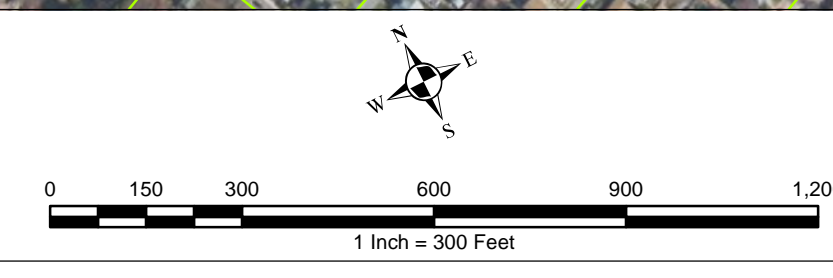


ALCOSAN GSI Project
O-13
Concept Municipal GSI Projects

© 2013 Bentley Systems, Incorporated. All rights reserved. Bentley, the "B" Bentley logo, MicroStation, and MicroStation V8i are either registered trademarks or trademarks of Bentley Systems, Incorporated or Bentley Software, Inc. Other brands and product names are trademarks of their respective owners.



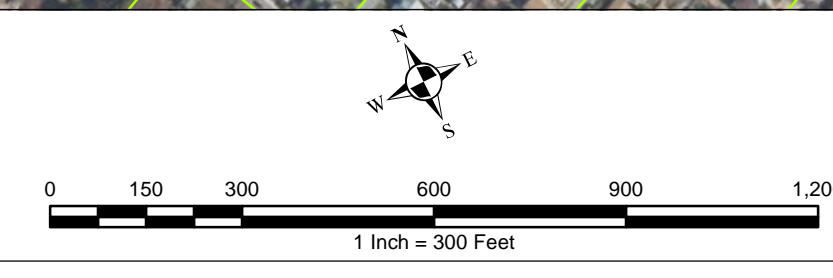
- ★ ALCOSAN Structures
- ALCOSAN Shallow-Cut Interceptor
- ALCOSAN Deep Tunnel Interceptor
- One Overall Manholes
- One Overall Sewerlines
- Permeable Pavement Municipal Projects
- Permeable Pavement Drainage Areas
- State Roads
- Combined Sewer Subcatchment
- Municipal Boundaries



ALCOSAN GSI Project
 Corliss (O-13)
 Concept Municipal Permeable Pavement GSI Projects
 Individual Project Drainage Areas



- ★ ALCOSAN Structures
- ALCOSAN Shallow-Cut Interceptor
- ALCOSAN Deep Tunnel Interceptor
- One Overall Manholes
- One Overall Sewerlines
- Bioretention Municipal Projects
- Bioretention Drainage Areas
- State Roads
- Combined Sewer Subcatchment
- Municipal Boundaries



ALCOSAN GSI Project
 Corliss (O-13)
 Concept Municipal Bioretention GSI Projects
 Individual Project Drainage Areas

Source: Esri, DigitalGlobe, GeoEye, IGN, GeoEye, USDA, USGS, Aerial, © 2017



★	ALCOSAN Structures	■	Infiltration Basin Municipal Projects
—	ALCOSAN Shallow-Cut Interceptor	■	Infiltration Basin Drainage Areas
—	ALCOSAN Deep Tunnel Interceptor	—	State Roads
●	One Overall Manholes	—	Combined Sewer Subcatchment
—	One Overall Sewerlines	—	Municipal Boundaries

0 150 300 600 900 1,200
1 Inch = 300 Feet

ALCOSAN GSI Project
Corliss (O-13)
Concept Municipal Infiltration Basin GSI Projects
Individual Project Drainage Areas

Corliss Concept Commercial / Institutional Permeable Pavement, Green Roof, and Special Case GSI Projects: Summary Table

February 21, 2014
Revised October 10, 2014

ALCOSAN POC	Model Subcatchment	Concept Comm / Inst Project UID	BMP Type	Concept Municipal Project Area (acres)	Taxable (acres)	Exempt (acres)	Provisionally Exempt (acres)	Public ROW (acres)
O-13-00	SUB-O1300-331416S907	CORL_6001	CPP	2.423	0.301	0.016	0.000	2.106
O-13-00	SUB-O1300-331416S907	CORL_6002	CPP	1.144	0.019	0.305	0.000	0.820
O-13-00	SUB-O1300-331416S907	CORL_6003	CPP	1.094	1.070	0.000	0.000	0.024
O-13-00	SUB-O1300-331416S907	CORL_6004	CPP	4.007	0.107	0.000	0.000	3.900
O-13-00	SUB-O1300-331416S907	CORL_6005	CPP	1.273	0.041	0.000	0.000	1.232
O-13-00	SUB-O1300-330414S002	CORL_6006	CPP	0.082	0.082	0.000	0.000	0.000
O-13-00	SUB-O1300-330414S002	CORL_6007	CPP	0.208	0.207	0.000	0.000	0.001
O-13-00	SUB-O1300-329415S992	CORL_6008	CPP	1.922	0.000	1.922	0.000	0.000
O-13-00	SUB-O1300-329415S992	CORL_6009	CPP	0.972	0.000	0.926	0.000	0.046
O-13-00	SUB-O1300-329415S992	CORL_6010	CPP	0.589	0.000	0.589	0.000	0.000
O-13-00	SUB-O1300-330415S990	CORL_6011	CPP	0.272	0.211	0.000	0.000	0.061
O-13-00	SUB-O1300-330415S990	CORL_6012	CPP	0.140	0.042	0.000	0.000	0.098
O-13-00	SUB-O1300-330415S990	CORL_6013	CPP	0.180	0.000	0.000	0.000	0.180
O-13-00	SUB-O1300-330415S010	CORL_6014	CPP	0.132	0.000	0.088	0.000	0.044
O-13-00	SUB-O1300-328415S018	CORL_6015	CPP	1.288	0.000	1.083	0.000	0.205
O-13-00	SUB-O1300-327416S008	CORL_6016	CPP	0.178	0.104	0.000	0.000	0.074
O-13-00	SUB-O1300-327416S008	CORL_6017	CPP	0.082	0.076	0.000	0.000	0.006
O-13-00	SUB-O1300-330414S002	CORL_6018	CPP	0.256	0.000	0.252	0.000	0.004
O-13-00	SUB-O1300-330414S002	CORL_6019	CPP	0.178	0.000	0.178	0.000	0.000
O-13-00	SUB-O1300-327416S008	CORL_6020	CPP	0.101	0.000	0.101	0.000	0.000
O-13-00	SUB-O1300-331416S907	CORL_7001	GR	0.326	0.304	0.003	0.000	0.019
O-13-00	SUB-O1300-331416S907	CORL_7002	GR	3.401	0.468	0.069	0.000	2.864
O-13-00	SUB-O1300-328415S018	CORL_7003	GR	1.648	1.516	0.000	0.000	0.132
O-13-00	SUB-O1300-331416S907	CORL_7004	GR	0.409	0.363	0.000	0.000	0.046
O-13-00	SUB-O1300-328415S018	CORL_7005	GR	0.156	0.108	0.000	0.000	0.048

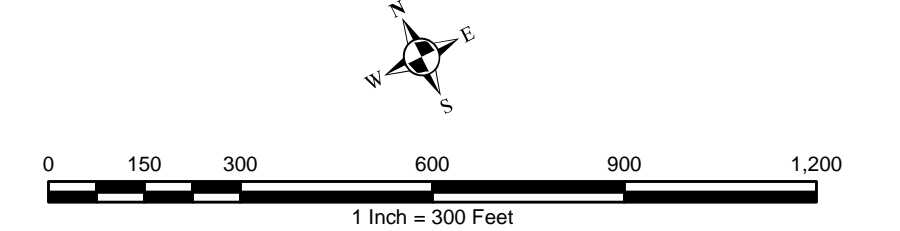
ALCOSAN POC	Model Subcatchment	Concept Comm / Inst Project UID	BMP Type	Concept Municipal Project Area (acres)	Taxable (acres)	Exempt (acres)	Provisionally Exempt (acres)	Public ROW (acres)
O-13-00	SUB-O1300-330415S010	CORL_7006	GR	0.133	0.002	0.129	0.000	0.002
O-13-00	SUB-O1300-329415S992	CORL_7007	GR	1.890	0.000	1.843	0.000	0.047
O-13-00	SUB-O1300-327416S010	CORL_7008	GR	1.612	0.000	1.612	0.000	0.000
O-13-00	SUB-O1300-327416S010	CORL_7009	GR	0.270	0.060	0.210	0.000	0.000
O-13-00	SUB-O1300-327416S010	CORL_7010	GR	0.134	0.000	0.134	0.000	0.000
O-13-00	SUB-O1300-327416S008	CORL_7011	GR	0.435	0.014	0.000	0.000	0.421
O-13-00	SUB-O1300-327415S023	CORL_7012	GR	0.265	0.263	0.000	0.000	0.002
O-13-00	SUB-O1300-330414S002	CORL_7013	GR	0.585	0.000	0.585	0.000	0.000
O-13-00	SUB-O1300-330414S002	CORL_7014	GR	0.341	0.000	0.341	0.000	0.000
O-13-00	SUB-O1300-330414S002	CORL_7015	GR	0.170	0.170	0.000	0.000	0.000
O-13-00	SUB-O1300-330415S010	CORL_7016	GR	0.224	0.222	0.000	0.000	0.002
O-13-00	SUB-O1300-330415S010	CORL_7017	GR	0.444	0.002	0.000	0.000	0.442
O-13-00	SUB-O1300-330414S002	CORL_8001	SRPP	0.180	0.000	0.000	0.000	0.180
O-13-00	SUB-O1300-330414S002	CORL_8002	SRPP	0.267	0.000	0.000	0.000	0.267
O-13-00	SUB-O1300-330414S002	CORL_8003	SRPP	0.459	0.005	0.000	0.000	0.454
O-13-00	SUB-O1300-330414S002	CORL_8004	SRPP	0.178	0.000	0.000	0.000	0.178
O-13-00	SUB-O1300-328415S012	CORL_8005	SRPP	0.722	0.007	0.001	0.000	0.714
O-13-00	SUB-O1300-330415S010	CORL_8006	SRPP	0.176	0.001	0.000	0.000	0.175
O-13-00	SUB-O1300-330415S010	CORL_8007	SRPP	0.192	0.002	0.002	0.000	0.188
O-13-00	SUB-O1300-330415S990	CORL_8008	SRPP	0.508	0.000	0.000	0.000	0.508
O-13-00	SUB-O1300-327415S023	CORL_8009	SRPP	0.662	0.002	0.000	0.000	0.660
O-13-00	SUB-O1300-327415S023	CORL_8010	SRPP	0.460	0.028	0.000	0.000	0.432
O-13-00	SUB-O1300-328415S012	CORL_8011	SRPP	0.609	0.001	0.018	0.000	0.590
O-13-00	SUB-O1300-327416S008	CORL_8012	SRPP	0.219	0.000	0.000	0.000	0.219



City of Pittsburgh

Ingram Borough

- ★ ALCOSAN Structures
- Special Case
- State Roads
- ALCOSAN Shallow-Cut Interceptor
- Concept Commercial / Institutional Permeable Pavement Projects
- Combined Sewer Subcatchment
- ALCOSAN Deep Tunnel Interceptor
- Concept Green Roof Projects
- Municipal Boundaries



ALCOSAN GSI Project
 Corliss (O-13)
 Concept Commercial / Institutional,
 Green Roof, and Special Case GSI Projects

© 2014 Bentley Systems, Incorporated. All rights reserved. Bentley, the "B" Bentley logo, and MicroStation are registered trademarks of Bentley Systems, Incorporated or Bentley Software, Inc. Other brands and product names are trademarks of their respective owners.