

5.15 Study Area 15 – Lower Southside Area

These findings apply to ALCOSAN Points of Connection M-06 through M-14, which include combined sewer systems in the City of Pittsburgh.

Lower Southside - BMP GIS Features

The SUSTAIN BMP siting tool analysis resulted in identification of a total of 1,178 BMP GIS Features covering 199 acres, which consisted of the following:

Table 5.15-1 - TOTAL SUSTAIN BMP Features Output

SUSTAIN BMP Feature Type	Number of Features	Area of BMP Features (Acres)
Permeable Pavement	587	76
Bioretention	445	76
Infiltration Basin/Trenches	0	0
Vegetated Filter Strips	263	25
Grass Swales	474	23
Constructed Wetlands	9	< 1

Locations of all identified BMP GIS features are presented on the SUSTAIN BMP Features Figure.

Lower Southside - Concept Municipal GSI Projects

Based on the BMP features, 103 concept Municipal GSI Projects were identified covering 15 total acres with a corresponding drainage area delineation of 109 total acres and consisted of the following:

Table 5.15-2 - Summary of Identified Concept Municipal GSI Projects

Concept GSI Technology	Number of Projects	GSI Project Area (Acres)	Project Drainage Area (Acres)
Permeable Pavement	48	13	91
Bioretention	51	2	15
Infiltration Basin/Trenches	0	0	0
Vegetated Filter Strips	4	< 1	2
Grass Swales	0	0	0
Constructed Wetlands	0	0	0

Project statistics including ALCOSAN POC, model subcatchment, BMP type, project area, area of project inside and outside of the public right-of-way, tributary drainage area, and tributary impervious drainage area are provided in the Concept Municipal Projects Table. Locations of all identified Concept Municipal GSI projects are presented in the Concept Municipal GSI Projects Figure (1) and the corresponding delineated tributary drainage areas are presented by BMP in the Individual Project Drainage Area Figures (3).

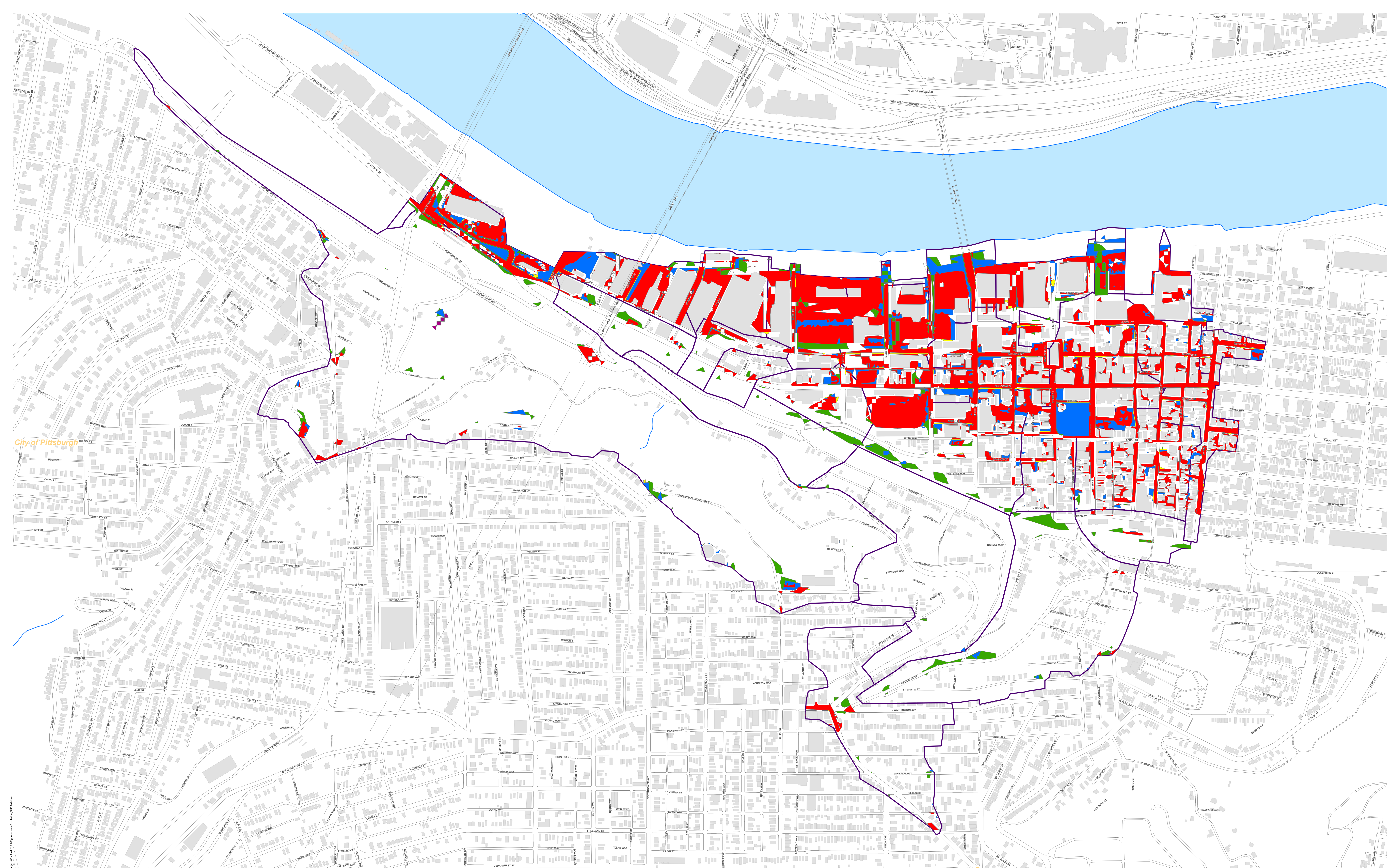
Lower Southside - Concept Commercial/Institutional and Special Case GSI Projects

Based on the BMP features, 151 concept Commercial/Institutional and Special Case GSI Projects were identified covering 51 total acres and consisted of the following:

Table 5.15-3 - Summary of Identified Concept Commercial/Institutional and Special Case GSI Projects

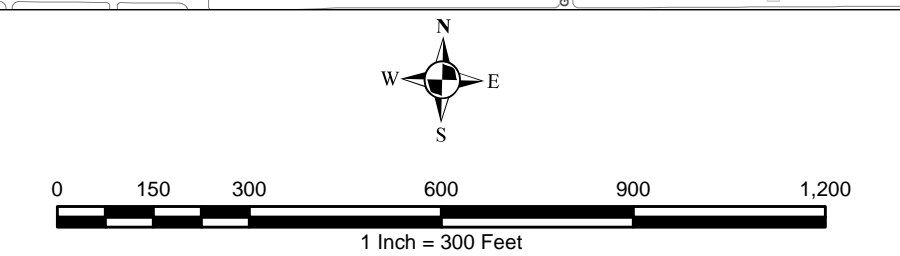
Concept GSI Technology or Special Case Project Category	Number of Projects	GSI Project Area (Acres)
Commercial/Institutional Permeable Pavement	71	22
Commercial/Institutional Green Roofs	51	20
State Route Permeable Pavement	29	9
Busway Permeable Pavement	0	0
Busway Bioretention	0	0

Project statistics including ALCOSAN POC, model subcatchment, BMP type, project area, area of project taxable, exempt, provisionally exempt and in the public right-of-way are provided in Concept Commercial / Institutional GSI Projects Table. Locations of all identified Concept Commercial / Institutional GSI projects are presented in the Concept Commercial / Institutional GSI Projects Figure (1).



City of Pittsburgh

- Permeable Pavement
- Vegetated Filter Strips
- Bioretention Basin
- Grass Swales
- Infiltration Basin / Trench
- Constructed Wetlands
- Combined Sewer Subcatchment
- Municipal Boundaries



ALCOSAN GSI Project
M-06 through M-14
SUSTAIN BMP Features

Lower Southside Concept Municipal Projects

June 4, 2014

Revised October 7, 2014

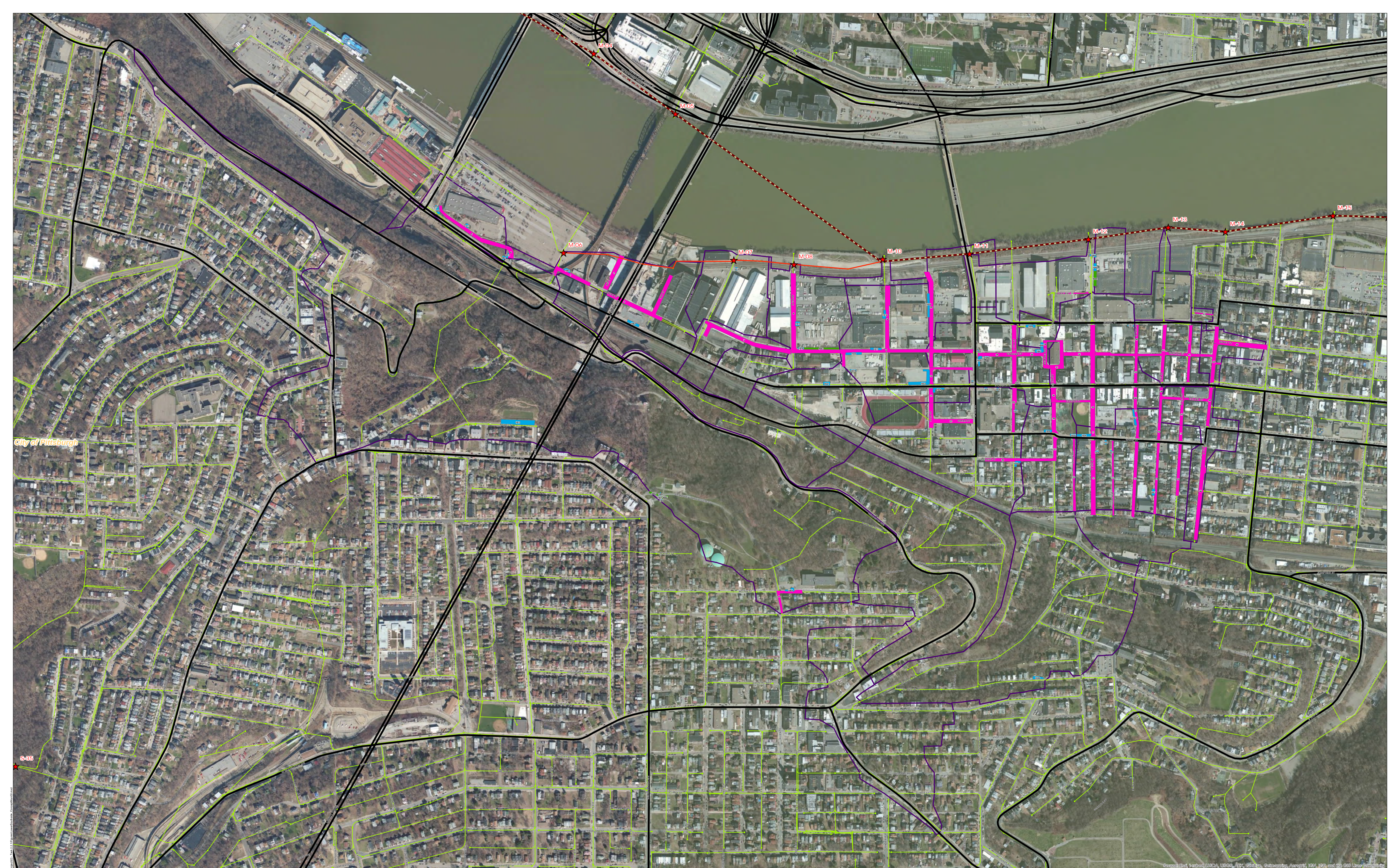
*Note: The drainage area presented in this table is representative of the individual drainage area tributary to each concept municipal project without any revisions to account for overlap, without engineering judgment revisions applied, and without the drainage areas being clipped to their corresponding model subcatchments.

ALCOSAN POC	Model Subcatchment	Concept Municipal Project UID	BMP Type	Concept Municipal Project Area (acres)	Public ROW or Parcel		Concept Municipal Project Individual Drainage Area (acres)*	Concept Municipal Project Impervious Drainage Area (acres)*
					Area of Municipal Project in Public ROW (acres)	Area of Municipal Project outside of Public ROW (acres)		
M-06-00	M-06-C-1-A	LWSS_1	PP	0.233	0.232	0.001	3.177	1.755
M-06-00	M-06-C-1-A	LWSS_2	PP	0.238	0.203	0.035	1.514	1.286
M-06-00	M-06-C-1-A	LWSS_3	PP	0.565	0.565	0.000	8.500	5.545
M-06-00	M-06-C-3	LWSS_4	PP	0.167	0.166	0.001	1.495	0.639
M-06-00	M-06-C-2-A	LWSS_5	PP	0.380	0.001	0.379	0.776	0.420
M-06-00	M-06-C-1-A	LWSS_6	PP	0.084	0.000	0.084	0.176	0.150
M-07-00	M-07-C-1-B	LWSS_7	PP	0.561	0.561	0.000	3.003	2.076
M-08-00	M-08-C-1-B	LWSS_8	PP	0.752	0.752	0.000	7.327	6.545
M-10-00	M-10-C-1-A	LWSS_9	PP	0.849	0.849	0.000	3.026	2.788
M-10-00	M-10-C-1-A	LWSS_10	PP	0.216	0.197	0.019	2.301	1.451
M-10-00	M-10-C-4-A	LWSS_11	PP	0.058	0.058	0.000	1.758	1.012
M-10-00	M-10-C-4-A	LWSS_12	PP	0.469	0.469	0.000	2.613	1.534
M-10-00	M-10-C-4-A	LWSS_13	PP	0.181	0.181	0.000	1.398	0.662
M-10-00	M-10-C-4-A	LWSS_14	PP	0.334	0.334	0.000	2.080	1.319
M-10-00	M-10-C-4-A	LWSS_15	PP	0.121	0.121	0.000	0.823	0.477
M-10-00	M-10-C-4-A	LWSS_16	PP	0.069	0.069	0.000	1.529	0.993
M-10-00	M-10-C-4-A	LWSS_17	PP	0.072	0.072	0.000	0.791	0.459
M-10-00	M-10-C-4-A	LWSS_18	PP	0.259	0.259	0.000	2.865	1.561
M-10-00	M-10-C-4-A	LWSS_19	PP	0.218	0.218	0.000	2.455	1.352
M-10-00	M-10-C-3-A	LWSS_20	PP	0.187	0.187	0.000	0.993	0.411
M-10-00	M-10-C-3-A	LWSS_21	PP	0.238	0.238	0.000	1.341	0.803
M-10-00	M-10-C-3-A	LWSS_22	PP	0.208	0.197	0.011	1.648	0.926
M-10-00	M-10-C-2-A	LWSS_23	PP	0.379	0.379	0.000	3.073	1.983
M-10-00	M-10-C-1-A	LWSS_24	PP	0.090	0.090	0.000	0.326	0.119
M-10-00	M-10-C-2-A	LWSS_25	PP	0.204	0.204	0.000	0.618	0.394
M-10-00	M-10-C-2-A	LWSS_26	PP	0.162	0.162	0.000	3.205	1.468

ALCOSAN POC	Model Subcatchment	Concept Municipal Project UID	BMP Type	Concept Municipal Project Area (acres)	Public ROW or Parcel		Concept Municipal Project Individual Drainage Area (acres)*	Concept Municipal Project Individual Project Impervious Drainage Area (acres)*
					Area of Municipal Project in Public ROW (acres)	Area of Municipal Project outside of Public ROW (acres)		
M-11-00	M-11-C-2	LWSS_27	PP	0.302	0.302	0.000	0.942	0.657
M-11-00	M-10-C-1-A	LWSS_28	PP	0.453	0.432	0.021	3.768	3.615
M-11-00	M-11-C-2	LWSS_29	PP	0.545	0.545	0.000	2.166	1.308
M-11-00	M-11-C-2	LWSS_30	PP	0.267	0.267	0.000	0.801	0.602
M-12-00	M-12-C-1	LWSS_31	PP	0.309	0.309	0.000	1.195	0.898
M-12-00	M-12-C-1	LWSS_32	PP	0.506	0.506	0.000	3.104	2.317
M-12-00	M-12-C-1	LWSS_33	PP	0.276	0.276	0.000	1.513	1.066
M-12-00	M-12-C-1	LWSS_34	PP	0.213	0.132	0.081	0.651	0.399
M-12-00	M-12-C-1	LWSS_35	PP	0.250	0.250	0.000	1.316	0.832
M-12-00	M-12-C-1	LWSS_36	PP	0.090	0.090	0.000	0.283	0.216
M-12-00	M-11A-C-1	LWSS_37	PP	0.064	0.064	0.000	0.695	0.486
M-12-00	M-13-C-1	LWSS_38	PP	0.033	0.033	0.000	0.109	0.078
M-12Z-00	M-11A-C-2	LWSS_39	PP	0.060	0.060	0.000	0.461	0.386
M-13-00	M-13-C-2	LWSS_40	PP	0.116	0.116	0.000	0.417	0.252
M-13-00	M-13-C-2	LWSS_41	PP	0.337	0.337	0.000	1.635	1.179
M-13-00	M-13-C-2	LWSS_42	PP	0.352	0.352	0.000	1.207	0.792
M-14-00	M-14-C-1-A	LWSS_43	PP	0.034	0.032	0.002	0.193	0.048
M-14-00	M-14-C-1-B	LWSS_44	PP	0.263	0.262	0.001	1.795	1.164
M-14-00	M-14-C-1-B	LWSS_45	PP	0.415	0.415	0.000	4.688	3.297
M-14-00	M-14-C-1-B	LWSS_46	PP	0.508	0.508	0.000	3.158	1.698
M-14-00	M-14-C-1-B	LWSS_47	PP	0.327	0.327	0.000	1.930	1.180
M-14-00	M-14-C-1-B	LWSS_48	PP	0.267	0.267	0.000	0.645	0.500
M-06-00	M-06-C-2-A	LWSS_1001	BR	0.016	0.011	0.005	0.027	0.001
M-06-00	M-06-C-1-A	LWSS_1002	BR	0.027	0.025	0.002	0.032	0.024
M-06-00	M-06-C-1-B	LWSS_1003	BR	0.047	0.031	0.016	0.142	0.097
M-06-00	M-06-C-3	LWSS_1004	BR	0.031	0.009	0.022	0.073	0.050
M-06-00	M-06-C-3	LWSS_1005	BR	0.012	0.007	0.005	0.024	0.003
M-06-00	M-06-C-3	LWSS_1006	BR	0.008	0.000	0.008	0.026	0.022
M-06-00	M-06-C-3	LWSS_1007	BR	0.002	0.000	0.002	0.004	0.004
M-06-00	M-06-C-3	LWSS_1008	BR	0.001	0.000	0.001	0.091	0.000
M-06-00	M-06-C-2-A	LWSS_1009	BR	0.028	0.006	0.022	0.047	0.002
M-06-00	M-06-C-2-A	LWSS_1010	BR	0.008	0.003	0.005	0.011	0.000

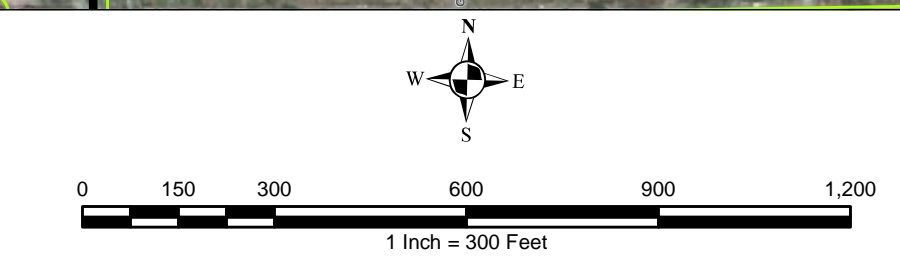
ALCOSAN POC	Model Subcatchment	Concept Municipal Project UID	BMP Type	Concept Municipal Project Area (acres)	Public ROW or Parcel		Concept Municipal Project Individual Drainage Area (acres)*	Concept Municipal Project Individual Project Impervious Drainage Area (acres)*
					Area of Municipal Project in Public ROW (acres)	Area of Municipal Project outside of Public ROW (acres)		
M-06-00	M-06-C-2-A	LWSS_1011	BR	0.021	0.000	0.021	0.023	0.000
M-06-00	M-06-C-1-A	LWSS_1012	BR	0.016	0.001	0.015	0.044	0.026
M-06-00	M-06-C-3	LWSS_1013	BR	0.217	0.080	0.137	0.814	0.325
M-07-00	M-07-C-1-A	LWSS_1014	BR	0.011	0.011	0.000	0.030	0.017
M-08-00	M-08-C-1-B	LWSS_1015	BR	0.029	0.008	0.021	2.531	2.202
M-08-00	M-08-C-1-B	LWSS_1016	BR	0.016	0.016	0.000	0.020	0.020
M-10-00	M-10-C-1-A	LWSS_1017	BR	0.036	0.036	0.000	0.043	0.043
M-10-00	M-10-C-1-A	LWSS_1018	BR	0.033	0.022	0.011	0.768	0.756
M-10-00	M-10-C-1-A	LWSS_1019	BR	0.017	0.006	0.011	0.080	0.023
M-10-00	M-10-C-1-A	LWSS_1020	BR	0.076	0.073	0.003	0.937	0.937
M-10-00	M-10-C-4-A	LWSS_1021	BR	0.013	0.005	0.008	0.022	0.007
M-10-00	M-10-C-4-A	LWSS_1022	BR	0.044	0.044	0.000	0.552	0.224
M-10-00	M-10-C-4-A	LWSS_1023	BR	0.028	0.006	0.022	0.202	0.113
M-10-00	M-10-C-4-A	LWSS_1024	BR	0.050	0.023	0.027	0.220	0.008
M-10-00	M-10-C-3-A	LWSS_1025	BR	0.022	0.010	0.012	0.228	0.001
M-10-00	M-10-C-3-A	LWSS_1026	BR	0.030	0.020	0.010	0.957	0.499
M-10-00	M-10-C-2-A	LWSS_1027	BR	0.010	0.005	0.005	0.133	0.083
M-10-00	M-10-C-2-A	LWSS_1028	BR	0.008	0.003	0.005	0.014	0.010
M-10-00	M-10-C-2-A	LWSS_1029	BR	0.012	0.007	0.005	0.019	0.019
M-10-00	M-10-C-2-A	LWSS_1030	BR	0.028	0.020	0.008	2.352	0.995
M-10-00	M-10-C-1-B	LWSS_1031	BR	0.033	0.022	0.011	0.807	0.658
M-10-00	M-10-C-3-A	LWSS_1032	BR	0.011	0.004	0.007	1.036	0.436
M-10-00	M-10-C-1-A	LWSS_1033	BR	0.155	0.092	0.063	0.989	0.494
M-10-00	M-10-C-1-A	LWSS_1034	BR	0.037	0.025	0.012	0.122	0.026
M-10-00	M-10-C-1-A	LWSS_1035	BR	0.052	0.041	0.011	0.100	0.052
M-10-00	M-10-C-3-B	LWSS_1036	BR	0.035	0.011	0.024	0.047	0.002
M-10-00	M-10-C-4-A	LWSS_1037	BR	0.010	0.004	0.006	0.098	0.060
M-10-00	M-10-C-4-A	LWSS_1038	BR	0.014	0.007	0.007	0.047	0.034
M-11-00	M-11-C-2	LWSS_1039	BR	0.034	0.017	0.017	0.040	0.023
M-11-00	M-11-C-2	LWSS_1040	BR	0.015	0.008	0.007	0.018	0.018
M-11-00	M-11-C-2	LWSS_1041	BR	0.003	0.003	0.000	0.012	0.005
M-11-00	M-11-C-2	LWSS_1042	BR	0.008	0.007	0.001	0.013	0.013

ALCOSAN POC	Model Subcatchment	Concept Municipal Project UID	BMP Type	Concept Municipal Project Area (acres)	Public ROW or Parcel		Concept Municipal Project Individual Drainage Area (acres)*	Concept Municipal Project Individual Project Impervious Drainage Area (acres)*
					Area of Municipal Project in Public ROW (acres)	Area of Municipal Project outside of Public ROW (acres)		
M-11-00	M-11-C-2	LWSS_1043	BR	0.045	0.030	0.015	0.350	0.247
M-11-00	M-11-C-2	LWSS_1044	BR	0.009	0.009	0.000	0.121	0.091
M-12-00	M-11A-C-1	LWSS_1045	BR	0.032	0.029	0.003	0.178	0.026
M-12-00	M-11A-C-1	LWSS_1046	BR	0.024	0.012	0.012	0.040	0.004
M-12-00	M-12-C-1	LWSS_1047	BR	0.013	0.008	0.005	0.030	0.030
M-12Z-00	M-11A-C-2	LWSS_1048	BR	0.025	0.016	0.009	0.395	0.284
M-12Z-00	M-11A-C-2	LWSS_1049	BR	0.037	0.018	0.019	0.061	0.013
M-13-00	M-13-C-2	LWSS_1050	BR	0.009	0.006	0.003	0.194	0.096
M-14-00	M-14-C-1-A	LWSS_1051	BR	0.013	0.011	0.002	0.024	0.003
M-06-00	M-06-C-3	LWSS_4001	VF	0.014	0.000	0.014	0.034	0.013
M-06-00	M-06-C-3	LWSS_4002	VF	0.023	0.000	0.023	0.056	0.042
M-08-00	M-08-C-1-B	LWSS_4003	VF	0.085	0.085	0.000	0.818	0.630
M-12-00	M-11A-C-1	LWSS_4004	VF	0.062	0.055	0.007	1.159	0.886



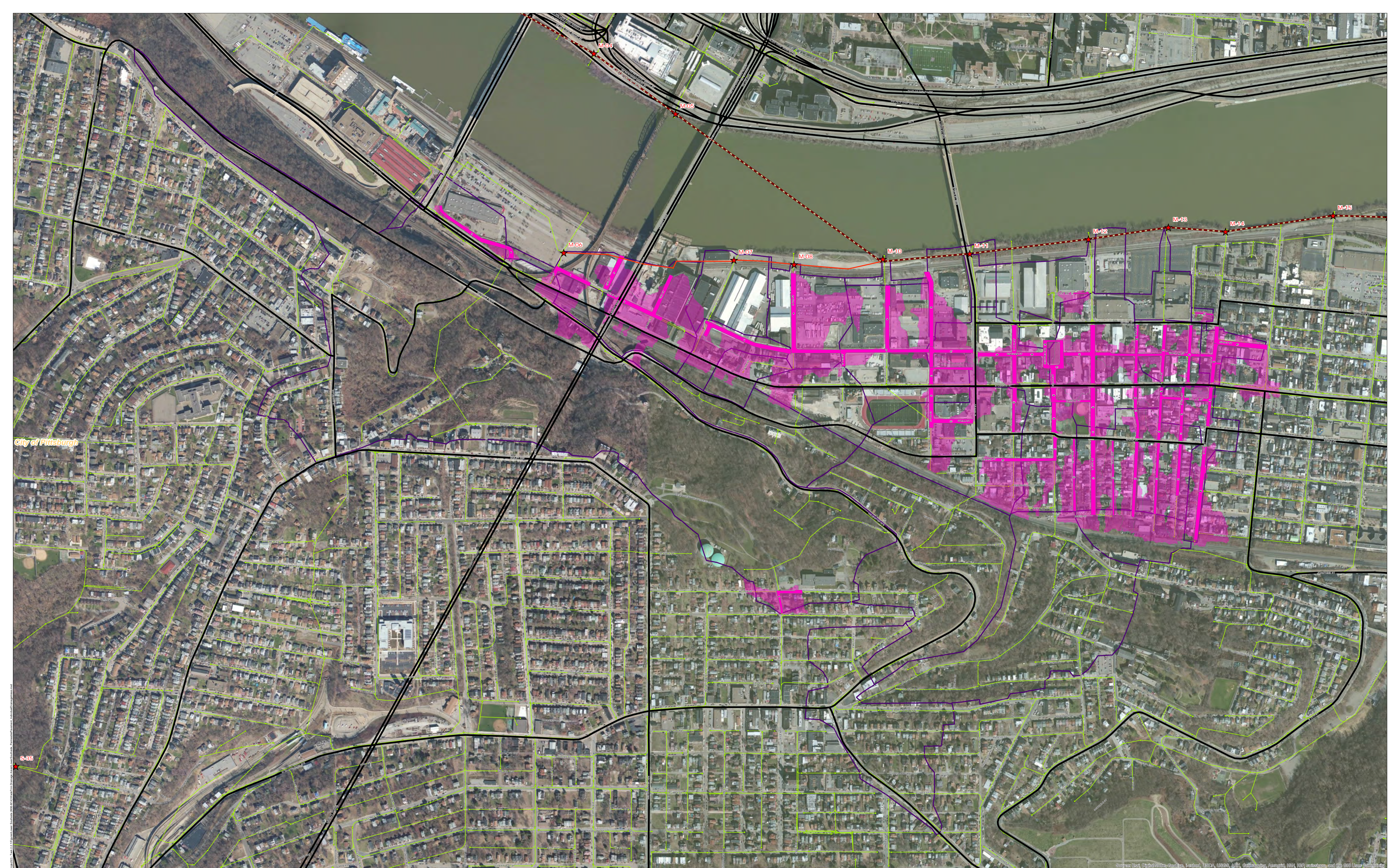
City of Pittsburgh

- ★ ALCOSAN Structures
 - ALCOSAN Shallow-Cut Interceptor
 - ALCOSAN Deep Tunnel Interceptor
 - One Overall Manholes
 - One Overall Sewerlines
- Municipal Projects**
- Vegetated Filter Strips
 - Bioretention
 - Permeable Pavement
- State Roads
- Combined Sewer Subcatchment
 - Municipal Boundaries

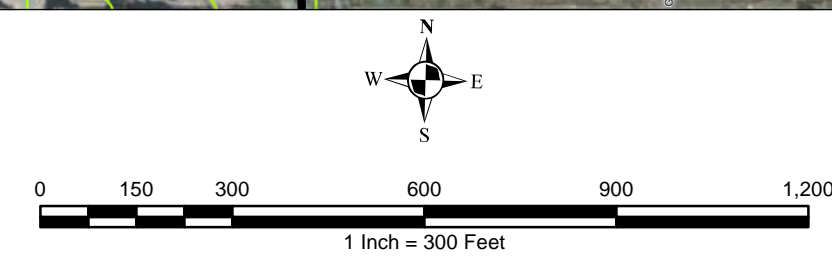


Source: Esri, Intellicart, USDA, USGS, AeroGRID, IGN, Esri, DeLorme, NAVTEQ, and the GIS User Community

ALCOSAN GSI Project
 M-06 through M-14
 Concept Municipal GSI Projects

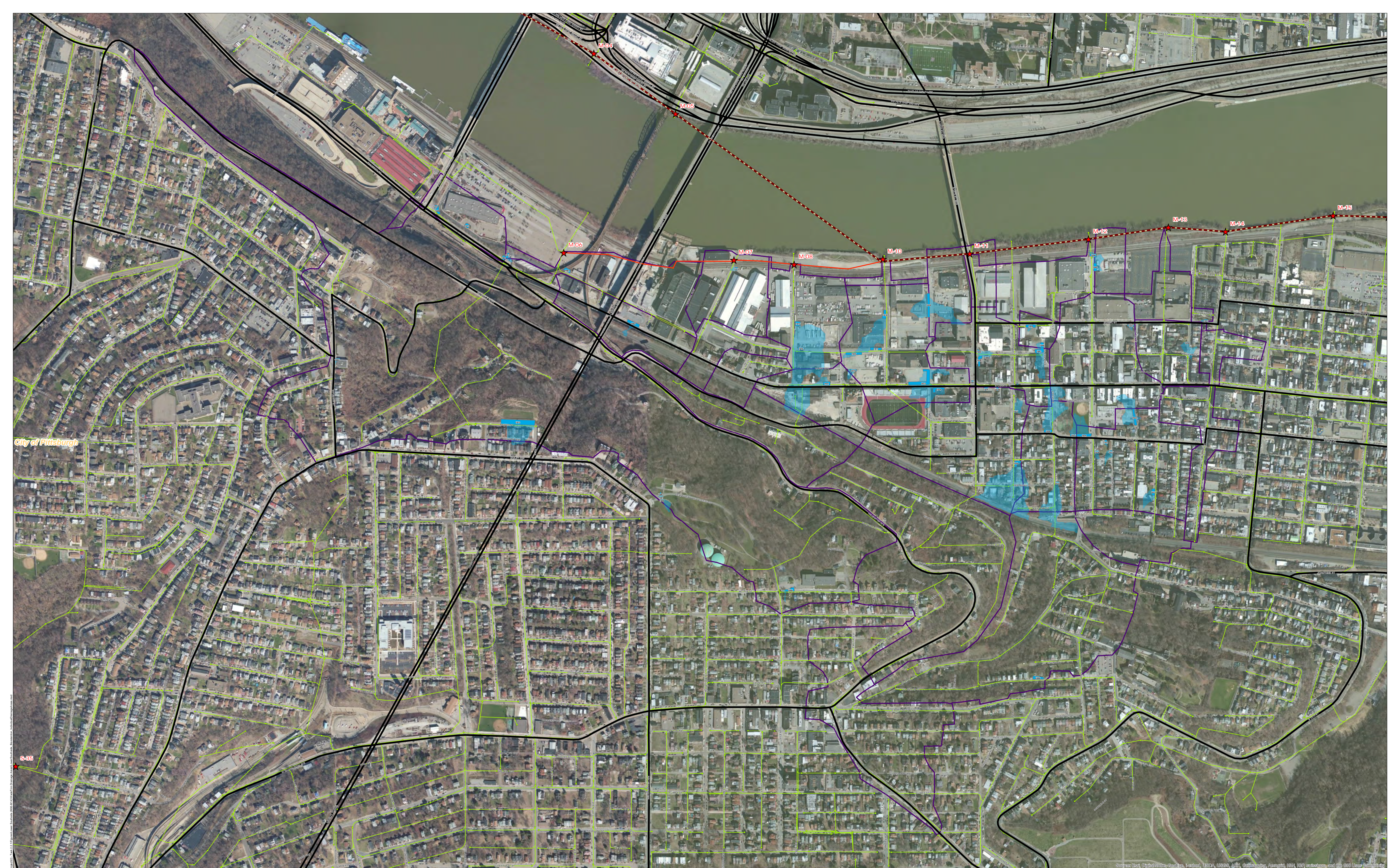


- ★ ALCOSAN Structures
- ALCOSAN Shallow-Cut Interceptor
- ALCOSAN Deep Tunnel Interceptor
- One Overall Manholes
- One Overall Sewerlines
- Permeable Pavement Municipal Projects
- Permeable Pavement Drainage Areas
- State Roads
- Combined Sewer Subcatchment
- Municipal Boundaries



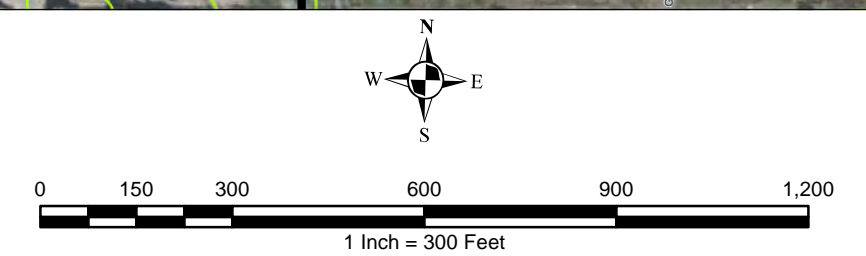
ALCOSAN GSI Project
 Lower Southside (M-06 thru M-14)
 Concept Municipal Permeable Pavement GSI Projects
 Individual Project Drainage Areas

Source: Esri, DigitalGlobe, GeoEye, USDA, USGS, AeroGRID, IGN, and the GIS User Community



City of Pittsburgh

- ★ ALCOSAN Structures
- ALCOSAN Shallow-Cut Interceptor
- ALCOSAN Deep Tunnel Interceptor
- One Overall Manholes
- One Overall Sewerlines
- Bioretention Municipal Projects
- Bioretention Drainage Areas
- State Roads
- Combined Sewer Subcatchment
- Municipal Boundaries

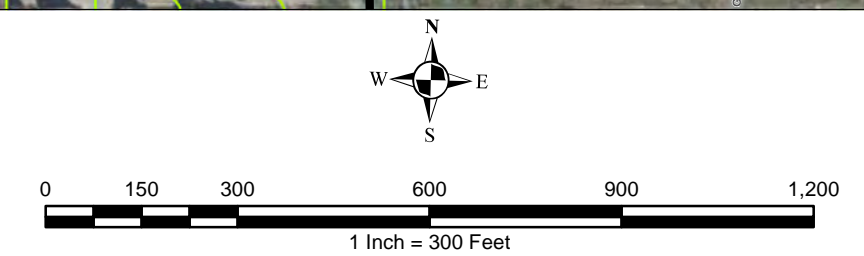


ALCOSAN GSI Project
 Lower Southside (M-06 thru M-14)
 Concept Municipal Bioretention GSI Projects
 Individual Project Drainage Areas

Source: Esri, DigitalGlobe, GeoEye, USDA, USGS, AeroGRID, IGN, IGA, and the GIS User Community



- ★ ALCOSAN Structures
- ALCOSAN Shallow-Cut Interceptor
- ALCOSAN Deep Tunnel Interceptor
- One Overall Manholes
- One Overall Sewerlines
- Vegetated Filter Strips Municipal Projects
- Vegetated Filter Strips Drainage Areas
- State Roads
- Combined Sewer Subcatchment
- Municipal Boundaries



ALCOSAN GSI Project
 Lower Southside (M-06 thru M-14)
 Concept Municipal Vegetated Filter Strips GSI Projects
 Individual Project Drainage Areas

Source: Esri, DigitalGlobe, GeoEye, USAID, USDA, USDA, GeoEye, AeroGRID, IGN, IGA, and the GIS User Community

**Lower Southside Concept Commercial / Institutional Permeable Pavement, Green Roof, and Special Case GSI Projects:
Summary Table**

February 21, 2014
Revised October 10, 2014

ALCOSAN POC	Model Subcatchment	Concept Comm / Inst Project UID	BMP Type	Concept Municipal Project Area (acres)	Taxable (acres)	Exempt (acres)	Provisionally Exempt (acres)	Public ROW (acres)
M-06-00	M-06-DWF-2/M-06-C-2-A	LWSS_6001	CPP	1.463	1.461	0.000	0.000	0.002
M-06-00	M-06-DWF-1/M-06-C-1-A	LWSS_6002	CPP	0.116	0.115	0.000	0.000	0.001
M-06-00	M-06-DWF-1/M-06-C-1-A	LWSS_6003	CPP	0.374	0.373	0.000	0.000	0.001
M-06-00	M-06-DWF-1/M-06-C-1-A	LWSS_6004	CPP	0.422	0.225	0.000	0.000	0.197
M-06-00	M-06-DWF-3/M-06-C-3	LWSS_6005	CPP	0.149	0.000	0.060	0.000	0.089
M-06-00	M-06-DWF-3/M-06-C-3	LWSS_6006	CPP	0.088	0.005	0.081	0.000	0.002
M-06-00	M-06-DWF-3/M-06-C-3	LWSS_6007	CPP	0.174	0.174	0.000	0.000	0.000
M-06-00	M-06-DWF-3/M-06-C-3	LWSS_6008	CPP	0.027	0.011	0.000	0.000	0.016
M-06-00	M-06-DWF-3/M-06-C-3	LWSS_6009	CPP	0.024	0.024	0.000	0.000	0.000
M-06-00	M-06-DWF-3/M-06-C-3	LWSS_6010	CPP	0.083	0.081	0.000	0.000	0.002
M-07-00	M-07-DWF-1/M-07-C-1-B	LWSS_6011	CPP	0.082	0.080	0.000	0.000	0.002
M-07-00	M-07-DWF-1/M-07-C-1-A	LWSS_6012	CPP	0.438	0.438	0.000	0.000	0.000
M-07-00	M-07-DWF-1/M-07-C-1-A	LWSS_6013	CPP	0.098	0.097	0.000	0.000	0.001
M-07-00	M-07-DWF-1/M-07-C-1-A	LWSS_6014	CPP	0.059	0.024	0.000	0.017	0.018
M-07-00	M-08-DWF-1/M-08-C-1-B	LWSS_6015	CPP	0.468	0.432	0.000	0.000	0.036
M-07-00	M-07-DWF-1/M-07-C-1-A	LWSS_6016	CPP	0.867	0.002	0.000	0.000	0.865
M-08-00	M-08-DWF-1/M-08-C-1-B	LWSS_6017	CPP	2.710	0.000	0.000	0.000	2.710
M-08-00	M-08-DWF-1/M-08-C-1-B	LWSS_6018	CPP	0.073	0.070	0.000	0.000	0.003
M-10-00	M-10-DWF-2/M-10-C-1-A	LWSS_6019	CPP	0.417	0.417	0.000	0.000	0.000
M-10-00	M-10-DWF-2/M-10-C-1-A	LWSS_6020	CPP	1.680	1.644	0.000	0.000	0.036
M-10-00	M-10-DWF-2/M-10-C-1-A	LWSS_6021	CPP	0.550	0.000	0.466	0.000	0.084
M-10-00	M-10-DWF-2/M-10-C-1-A	LWSS_6022	CPP	0.397	0.180	0.000	0.000	0.217
M-10-00	M-10-DWF-2/M-10-C-1-A	LWSS_6023	CPP	0.802	0.001	0.000	0.000	0.801
M-10-00	M-10-DWF-2/M-10-C-1-A	LWSS_6024	CPP	0.086	0.068	0.000	0.000	0.018
M-10-00	M-10-DWF-2/M-10-C-1-A	LWSS_6025	CPP	0.225	0.005	0.000	0.000	0.220

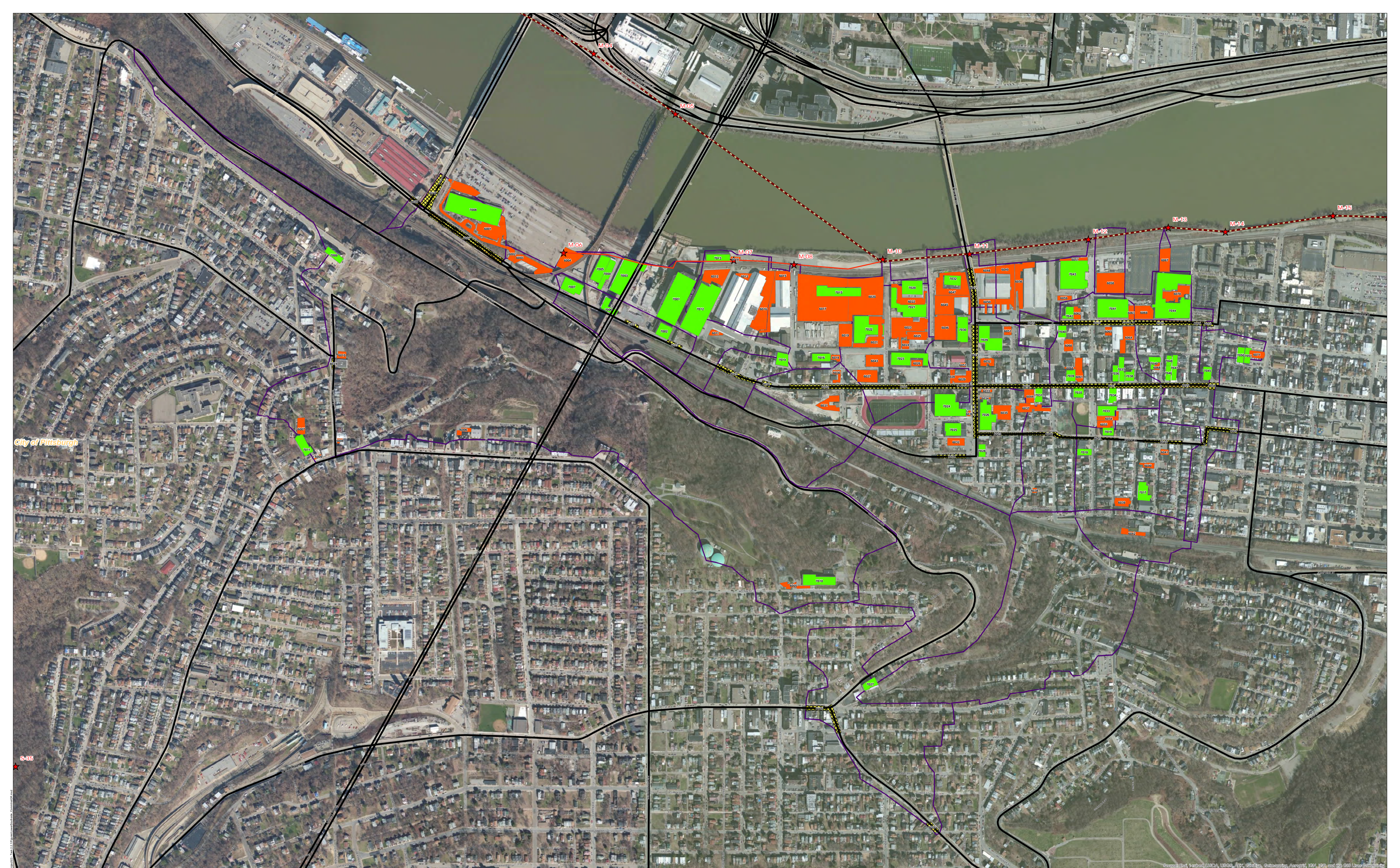
ALCOSAN POC	Model Subcatchment	Concept Comm / Inst Project UID	BMP Type	Concept Municipal Project Area (acres)	Taxable (acres)	Exempt (acres)	Provisionally Exempt (acres)	Public ROW (acres)
M-10-00	M-10-DWF-2/M-10-C-1-A	LWSS_6026	CPP	0.096	0.000	0.096	0.000	0.000
M-10-00	M-10-DWF-2/M-10-C-1-A	LWSS_6027	CPP	0.339	0.052	0.000	0.000	0.287
M-10-00	M-10-DWF-2/M-10-C-1-A	LWSS_6028	CPP	0.048	0.006	0.000	0.000	0.042
M-10-00	M-10-DWF-2/M-10-C-1-A	LWSS_6029	CPP	0.232	0.224	0.000	0.000	0.008
M-10-00	M-10-DWF-2/M-10-C-1-B	LWSS_6030	CPP	0.099	0.084	0.000	0.000	0.015
M-10-00	M-10-DWF-2/M-10-C-1-B	LWSS_6031	CPP	0.294	0.294	0.000	0.000	0.000
M-10-00	M-10-DWF-2/M-10-C-2-A	LWSS_6032	CPP	0.174	0.000	0.064	0.000	0.110
M-10-00	M-10-DWF-2/M-10-C-2-A	LWSS_6033	CPP	0.045	0.045	0.000	0.000	0.000
M-10-00	M-10-DWF-2/M-10-C-2-A	LWSS_6034	CPP	0.026	0.026	0.000	0.000	0.000
M-10-00	M-10-DWF-2/M-10-C-2-A	LWSS_6035	CPP	0.314	0.002	0.281	0.000	0.031
M-10-00	M-10-DWF-2/M-10-C-2-A	LWSS_6036	CPP	0.024	0.024	0.000	0.000	0.000
M-10-00	M-10-DWF-2/M-10-C-2-A	LWSS_6037	CPP	0.291	0.254	0.000	0.000	0.037
M-10-00	M-10-DWF-2/M-10-C-3-A	LWSS_6038	CPP	0.032	0.023	0.000	0.000	0.009
M-10-00	M-10-DWF-3/M-10-C-4-A	LWSS_6039	CPP	0.179	0.000	0.032	0.000	0.147
M-10-00	M-10-DWF-3/M-10-C-4-A	LWSS_6040	CPP	0.088	0.018	0.000	0.000	0.070
M-10-00	M-10-DWF-3/M-10-C-4-A	LWSS_6041	CPP	0.059	0.058	0.000	0.000	0.001
M-10-00	M-10-DWF-3/M-10-C-4-B	LWSS_6042	CPP	0.142	0.121	0.000	0.000	0.021
M-10-00	M-10-DWF-2/M-10-C-1-A	LWSS_6043	CPP	0.293	0.000	0.293	0.000	0.000
M-11-00	M-11-DWF-2/M-11-C-2	LWSS_6044	CPP	0.173	0.173	0.000	0.000	0.000
M-11-00	M-11-DWF-1	LWSS_6045	CPP	0.604	0.591	0.000	0.000	0.013
M-11-00	M-11-DWF-2/M-11-C-2	LWSS_6046	CPP	0.720	0.720	0.000	0.000	0.000
M-11-00	M-11-DWF-1	LWSS_6047	CPP	0.639	0.018	0.000	0.000	0.621
M-11-00	M-11-DWF-1/M-11-C-1	LWSS_6048	CPP	0.173	0.132	0.000	0.040	0.001
M-11-00	M-11A-DWF-1/M-11A-C-1	LWSS_6049	CPP	0.565	0.565	0.000	0.000	0.000
M-11-00	M-11-DWF-1/M-11-C-1	LWSS_6050	CPP	0.176	0.176	0.000	0.000	0.000
M-11-00	M-11-DWF-2/M-11-C-2	LWSS_6051	CPP	0.089	0.000	0.074	0.000	0.015
M-11-00	M-11-DWF-2/M-11-C-2	LWSS_6052	CPP	0.140	0.140	0.000	0.000	0.000
M-11-00	M-11-DWF-2/M-11-C-2	LWSS_6053	CPP	0.029	0.000	0.000	0.000	0.029
M-12-00	M-12-DWF-1/M-12-C-1	LWSS_6054	CPP	0.140	0.000	0.139	0.000	0.001
M-12-00	M-12-DWF-1/M-12-C-1	LWSS_6055	CPP	0.148	0.133	0.007	0.000	0.008

ALCOSAN POC	Model Subcatchment	Concept Comm / Inst Project UID	BMP Type	Concept Municipal Project Area (acres)	Taxable (acres)	Exempt (acres)	Provisionally Exempt (acres)	Public ROW (acres)
M-12-00	M-11A-DWF-1/M-11A-C-1	LWSS_6056	CPP	0.511	0.024	0.000	0.000	0.487
M-12-00	M-11A-DWF-1/M-11A-C-1	LWSS_6057	CPP	0.095	0.000	0.055	0.000	0.040
M-12-00	M-12-DWF-1	LWSS_6058	CPP	0.753	0.753	0.000	0.000	0.000
M-12-00	M-11A-DWF-1/M-11A-C-1	LWSS_6059	CPP	0.089	0.000	0.089	0.000	0.000
M-12-00	M-12-DWF-1/M-12-C-1	LWSS_6060	CPP	0.149	0.122	0.000	0.000	0.027
M-12-00	M-12-DWF-1/M-12-C-1	LWSS_6061	CPP	0.239	0.000	0.237	0.000	0.002
M-12-00	M-12-DWF-1/M-12-C-1	LWSS_6062	CPP	0.121	0.114	0.000	0.000	0.007
M-12-00	M-12-DWF-1/M-12-C-1	LWSS_6063	CPP	0.105	0.000	0.102	0.000	0.003
M-12-00	M-12-DWF-1/M-12-C-1	LWSS_6064	CPP	0.313	0.097	0.205	0.000	0.011
M-12-00	M-12-DWF-1/M-12-C-1	LWSS_6065	CPP	0.079	0.000	0.079	0.000	0.000
M-12-00	M-12-DWF-1/M-12-C-1	LWSS_6066	CPP	0.028	0.022	0.002	0.000	0.004
M-13-00	M-13-DWF-1/M-13-C-1	LWSS_6067	CPP	0.330	0.125	0.000	0.000	0.205
M-13-00	M-13-DWF-2/M-13-C-2	LWSS_6068	CPP	0.051	0.001	0.000	0.000	0.050
M-13-00	M-13-DWF-1/M-13-C-1	LWSS_6069	CPP	0.326	0.323	0.003	0.000	0.000
M-13-00	M-13-DWF-1/M-13-C-1	LWSS_6070	CPP	0.364	0.361	0.000	0.000	0.003
M-14-00	M-14-DWF-1/M-14-C-1-B	LWSS_6071	CPP	0.144	0.000	0.126	0.000	0.018
M-06-00	M-06-DWF-1/M-06-C-1-A	LWSS_7001	GR	1.386	1.317	0.000	0.000	0.069
M-06-00	M-06-DWF-1/M-06-C-1-B	LWSS_7002	GR	0.237	0.222	0.000	0.000	0.015
M-06-00	M-06-DWF-1/M-06-C-1-A	LWSS_7003	GR	0.815	0.007	0.613	0.000	0.195
M-06-00	M-06-DWF-1/M-06-C-1-A	LWSS_7004	GR	0.259	0.215	0.000	0.000	0.044
M-06-00	M-06-DWF-1/M-06-C-1-A	LWSS_7005	GR	0.370	0.023	0.000	0.000	0.347
M-06-00	M-06-DWF-1/M-06-C-1-B	LWSS_7006	GR	0.183	0.025	0.000	0.000	0.158
M-06-00	M-06-DWF-1/M-06-C-1-B	LWSS_7007	GR	0.340	0.206	0.000	0.000	0.134
M-06-00	M-06-DWF-2/M-06-C-2-A	LWSS_7008	GR	1.344	1.342	0.000	0.000	0.002
M-06-00	M-06-DWF-3/M-06-C-3	LWSS_7009	GR	0.169	0.009	0.000	0.000	0.160
M-06-00	M-06-DWF-3/M-06-C-3	LWSS_7010	GR	0.408	0.000	0.408	0.000	0.000
M-06-00	M-06-DWF-3/M-06-C-3	LWSS_7011	GR	0.259	0.257	0.000	0.000	0.002
M-07-00	M-07-DWF-1/M-07-C-1-A	LWSS_7012	GR	1.472	1.357	0.000	0.000	0.115
M-07-00	M-07-DWF-1/M-07-C-1-A	LWSS_7013	GR	0.224	0.186	0.000	0.038	0.000
M-08-00	M-08-DWF-1/M-08-C-1-A	LWSS_7014	GR	0.201	0.201	0.000	0.000	0.000

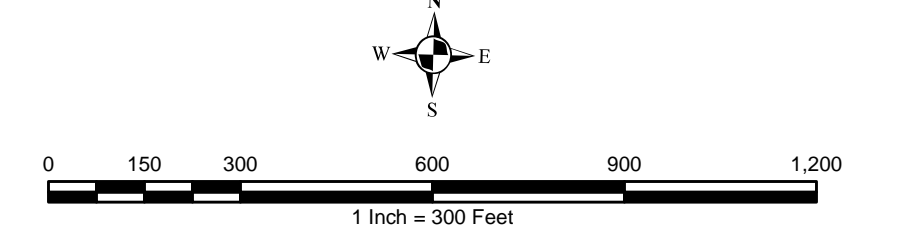
ALCOSAN POC	Model Subcatchment	Concept Comm / Inst Project UID	BMP Type	Concept Municipal Project Area (acres)	Taxable (acres)	Exempt (acres)	Provisionally Exempt (acres)	Public ROW (acres)
M-08-00	M-08-DWF-1/M-08-C-1-B	LWSS_7015	GR	0.577	0.545	0.000	0.000	0.032
M-08-88	M-08-DWF-1/M-08-C-1-B	LWSS_7016	GR	0.190	0.175	0.000	0.000	0.015
M-10-00	M-10-DWF-3/M-10-C-4-A	LWSS_7017	GR	0.264	0.000	0.257	0.000	0.007
M-10-00	M-10-DWF-3/M-10-C-4-A	LWSS_7018	GR	0.123	0.084	0.000	0.000	0.039
M-10-00	M-10-DWF-3/M-10-C-4-A	LWSS_7019	GR	0.120	0.005	0.000	0.082	0.033
M-10-00	M-10-DWF-2/M-10-C-1-A	LWSS_7020	GR	0.386	0.385	0.000	0.000	0.001
M-10-00	M-10-DWF-2/M-10-C-1-A	LWSS_7021	GR	0.673	0.614	0.000	0.000	0.059
M-10-00	M-10-DWF-2/M-10-C-1-A	LWSS_7022	GR	0.711	0.000	0.643	0.000	0.068
M-10-00	M-10-DWF-2/M-10-C-1-A	LWSS_7023	GR	0.498	0.000	0.438	0.000	0.060
M-10-00	M-10-DWF-2/M-10-C-2-A	LWSS_7024	GR	0.759	0.759	0.000	0.000	0.000
M-10-00	M-10-DWF-2/M-10-C-2-A	LWSS_7025	GR	0.278	0.015	0.234	0.000	0.029
M-10-00	M-10-DWF-2/M-10-C-2-A	LWSS_7026	GR	0.479	0.011	0.462	0.000	0.006
M-10-00	M-10-DWF-2/M-10-C-2-B	LWSS_7027	GR	0.150	0.081	0.000	0.000	0.069
M-10-00	M-10-DWF-2/M-10-C-2-A	LWSS_7028	GR	0.120	0.120	0.000	0.000	0.000
M-11-00	M-11-DWF-2/M-11-C-2	LWSS_7029	GR	0.502	0.000	0.496	0.000	0.006
M-11-00	M-11-DWF-2/M-11-C-2	LWSS_7030	GR	0.357	0.001	0.015	0.000	0.341
M-11-00	M-11-DWF-2/M-11-C-2	LWSS_7031	GR	0.145	0.106	0.000	0.000	0.039
M-11-00	M-11-DWF-1	LWSS_7032	GR	0.323	0.226	0.000	0.000	0.097
M-12-00	M-12-DWF-1/M-12-C-1	LWSS_7033	GR	0.228	0.000	0.228	0.000	0.000
M-12-00	M-12-DWF-1/M-12-C-1	LWSS_7034	GR	0.155	0.034	0.001	0.000	0.120
M-12-00	M-12-DWF-1/M-12-C-1	LWSS_7035	GR	0.145	0.037	0.000	0.000	0.108
M-12-00	M-12-DWF-1/M-12-C-1	LWSS_7036	GR	0.127	0.006	0.121	0.000	0.000
M-12-00	M-12-DWF-1/M-12-C-1	LWSS_7037	GR	0.177	0.004	0.000	0.000	0.173
M-12-00	M-12-DWF-1/M-12-C-1	LWSS_7038	GR	0.122	0.001	0.000	0.000	0.121
M-12-00	M-12-DWF-1/M-12-C-1	LWSS_7039	GR	0.140	0.028	0.004	0.000	0.108
M-12-00	M-12-DWF-1/M-12-C-1	LWSS_7040	GR	0.130	0.109	0.000	0.000	0.021
M-12-00	M-12-DWF-1/M-12-C-1	LWSS_7041	GR	0.782	0.000	0.782	0.000	0.000
M-12-00	M-12-DWF-1/M-12-C-1	LWSS_7042	GR	0.139	0.004	0.006	0.000	0.129
M-12-00	M-11A-DWF-1/M-11A-C-1	LWSS_7043	GR	1.069	0.000	1.026	0.000	0.043
M-13-00	M-13-DWF-1/M-13-C-1	LWSS_7044	GR	1.582	1.527	0.003	0.000	0.052

ALCOSAN POC	Model Subcatchment	Concept Comm / Inst Project UID	BMP Type	Concept Municipal Project Area (acres)	Taxable (acres)	Exempt (acres)	Provisionally Exempt (acres)	Public ROW (acres)
M-13-00	M-14-DWF-1/M-14-C-1-B	LWSS_7045	GR	0.143	0.087	0.000	0.000	0.056
M-13-00	M-13-DWF-2/M-13-C-2	LWSS_7046	GR	0.113	0.083	0.000	0.000	0.030
M-13-00	M-13-DWF-2/M-13-C-2	LWSS_7047	GR	0.169	0.006	0.000	0.000	0.163
M-13-00	M-13-DWF-2/M-13-C-2	LWSS_7048	GR	0.074	0.052	0.000	0.000	0.022
M-13-00	M-13-DWF-2/M-13-C-2	LWSS_7049	GR	0.128	0.112	0.000	0.000	0.016
M-14-00	M-14-DWF-1/M-14-C-1-B	LWSS_7050	GR	0.143	0.028	0.000	0.000	0.115
M-14-00	M-14-DWF-1/M-14-C-1-B	LWSS_7051	GR	0.131	0.089	0.020	0.000	0.022
M-10-00	M-10-DWF-2/M-10-C-1-A	LWSS_8001	SRPP	0.657	0.000	0.000	0.000	0.657
M-10-00	M-10-DWF-2/M-10-C-1-B	LWSS_8002	SRPP	0.454	0.000	0.000	0.000	0.454
M-10-00	M-10-DWF-2/M-10-C-2-A	LWSS_8003	SRPP	0.556	0.000	0.000	0.000	0.556
M-10-00	M-10-DWF-2/M-10-C-2-A	LWSS_8004	SRPP	0.157	0.000	0.000	0.000	0.157
M-10-00	M-10-DWF-2/M-10-C-2-B	LWSS_8005	SRPP	0.336	0.000	0.000	0.000	0.336
M-10-00	M-10-DWF-2/M-10-C-3-A	LWSS_8006	SRPP	0.257	0.000	0.000	0.000	0.257
M-14-00	M-14-DWF-1/M-14-C-1-B	LWSS_8007	SRPP	0.310	0.000	0.000	0.000	0.310
M-14-00	M-14-DWF-1/M-14-C-1-B	LWSS_8008	SRPP	0.078	0.000	0.000	0.000	0.078
M-13-00	M-13-DWF-2/M-13-C-2	LWSS_8009	SRPP	0.051	0.000	0.000	0.000	0.051
M-12-00	M-12-DWF-1/M-12-C-1	LWSS_8010	SRPP	0.498	0.000	0.000	0.000	0.498
M-12-00	M-12-DWF-1/M-12-C-1	LWSS_8011	SRPP	0.758	0.000	0.000	0.000	0.758
M-11-00	M-11-DWF-1/M-11-C-1	LWSS_8012	SRPP	0.313	0.000	0.000	0.015	0.298
M-08-00	M-08-DWF-1/M-08-C-1-A	LWSS_8013	SRPP	0.273	0.000	0.000	0.000	0.273
M-11-00	M-11-DWF-2/M-11-C-2	LWSS_8014	SRPP	0.501	0.000	0.000	0.000	0.501
M-10-00	M-10-DWF-3/M-10-C-4-A	LWSS_8015	SRPP	0.153	0.000	0.000	0.000	0.153
M-10-00	M-10-DWF-3/M-10-C-4-A	LWSS_8016	SRPP	0.182	0.000	0.000	0.000	0.182
M-06-00	M-06-DWF-2/M-06-C-2-A	LWSS_8017	SRPP	0.481	0.005	0.000	0.000	0.476
M-11-00	M-11-DWF-2/M-11-C-2	LWSS_8018	SRPP	0.423	0.000	0.000	0.000	0.423
M-12Z-00	M-11A-DWF-2/M-11A-C-2	LWSS_8019	SRPP	0.100	0.000	0.000	0.000	0.100
M-13-00	M-13-DWF-2/M-13-C-2	LWSS_8020	SRPP	0.383	0.000	0.000	0.000	0.383
M-06-00	M-06-DWF-2/M-06-C-2-A	LWSS_8021	SRPP	0.753	0.000	0.002	0.000	0.751
M-06-00	M-06-DWF-1/M-06-C-1-B	LWSS_8022	SRPP	0.073	0.000	0.000	0.000	0.073
M-06-00	M-06-DWF-1/M-06-C-1-B	LWSS_8023	SRPP	0.094	0.000	0.000	0.000	0.094

ALCOSAN POC	Model Subcatchment	Concept Comm / Inst Project UID	BMP Type	Concept Municipal Project Area (acres)	Taxable (acres)	Exempt (acres)	Provisionally Exempt (acres)	Public ROW (acres)
M-13-00	M-13-DWF-2/M-13-C-2	LWSS_8025	SRPP	0.336	0.004	0.000	0.000	0.332
M-10-00	M-10-DWF-2/M-10-C-2-B	LWSS_8026	SRPP	0.082	0.000	0.000	0.000	0.082
M-06-00	M-06-DWF-3/M-06-C-3	LWSS_8027	SRPP	0.053	0.000	0.000	0.000	0.053
M-06-00	M-06-DWF-2/M-06-C-2-B	LWSS_8028	SRPP	0.090	0.000	0.000	0.000	0.090
M-10-00	M-10-DWF-2/M-10-C-1-B	LWSS_8034	SRPP	0.068	0.000	0.000	0.000	0.068
M-14-00	M-14-DWF-1/M-14-C-1-A	LWSS_8035	SRPP	0.072	0.000	0.000	0.000	0.072



- ★ ALCOSAN Structures
- ALCOSAN Shallow-Cut Interceptor
- ALCOSAN Deep Tunnel Interceptor
- Special Case
- Concept Commercial / Institutional Permeable Pavement Projects
- Concept Green Roof Projects
- State Roads
- Combined Sewer Subcatchment
- Municipal Boundaries



Source: Esri, Imagery, USGS, USDA, NPS, FEMA, GEBCO, Swatch, GEBCO, Esri, and the GIS User Community

ALCOSAN GSI Project
 Lower Southside (M-06 thru M-14)
 Concept Commercial / Institutional,
 Green Roof, and Special Case GSI Projects