

### 5.13 Study Area 13 – Swissvale / Rankin

These findings apply to ALCOSAN Points of Connection M-48 through M-50, which include combined sewer systems in Rankin Borough and Swissvale Borough.

#### Swissvale/Rankin - BMP GIS Features

The SUSTAIN BMP siting tool analysis resulted in identification of a total of 2,055 BMP GIS Features covering 135 acres, which consisted of the following:

**Table 5.13-1 - TOTAL SUSTAIN BMP Features Output**

<b>SUSTAIN BMP Feature Type</b>	<b>Number of Features</b>	<b>Area of BMP Features (Acres)</b>
Permeable Pavement	311	51
Bioretention	754	36
Infiltration Basin/Trenches	105	10
Vegetated Filter Strips	176	17
Grass Swales	667	20
Constructed Wetlands	42	1

Locations of all identified BMP GIS features are presented on the SUSTAIN BMP Features Figure.

Swissvale/Rankin - Concept Municipal GSI Projects

Based on the BMP features, 137 concept Municipal GSI Projects were identified covering 20 total acres with a corresponding drainage area delineation of 64 total acres and consisted of the following:

**Table 5.13-2 - Summary of Identified Concept Municipal GSI Projects**

<b>Concept GSI Technology</b>	<b>Number of Projects</b>	<b>GSI Project Area (Acres)</b>	<b>Project Drainage Area (Acres)</b>
Permeable Pavement	57	17	52
Bioretention	79	3	12
Infiltration Basin/Trenches	0	0	0
Vegetated Filter Strips	1	< 1	< 1
Grass Swales	0	0	0
Constructed Wetlands	0	0	0

Project statistics including ALCOSAN POC, model subcatchment, BMP type, project area, area of project inside and outside of the public right-of-way, tributary drainage area, and tributary impervious drainage area are provided in the Concept Municipal Projects Table. Locations of all identified Concept Municipal GSI projects are presented in the Concept Municipal GSI Projects Figure (1) and the corresponding delineated tributary drainage areas are presented by BMP in the Individual Project Drainage Area Figures (3).

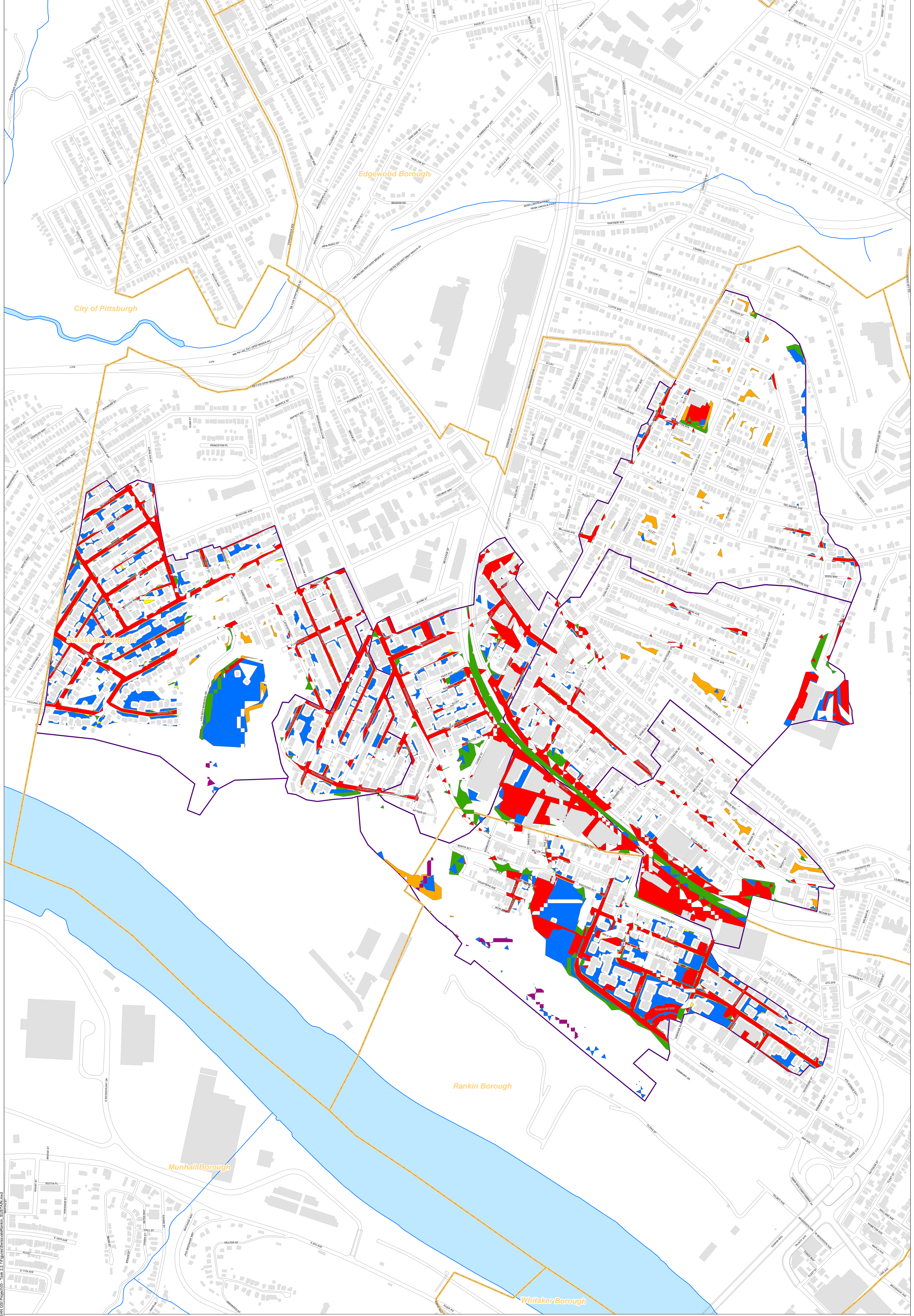
Swissvale/Rankin - Concept Commercial/Institutional and Special Case GSI Projects

Based on the BMP features, 62 concept Commercial/Institutional and Special Case GSI Projects were identified covering 21 total acres and consisted of the following:

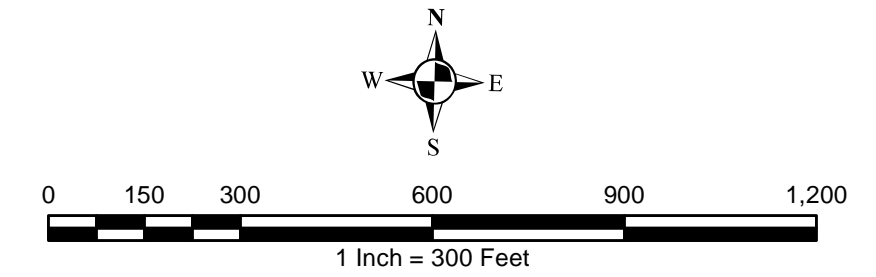
**Table 5.13-3 - Summary of Identified Concept Commercial/Institutional and Special Case GSI Projects**

<b>Concept GSI Technology or Special Case Project Category</b>	<b>Number of Projects</b>	<b>GSI Project Area (Acres)</b>
Commercial/Institutional Permeable Pavement	36	9
Commercial/Institutional Green Roofs	16	6
State Route Permeable Pavement	7	5
Busway Permeable Pavement	3	2
Busway Bioretention	0	0

Project statistics including ALCOSAN POC, model subcatchment, BMP type, project area, area of project taxable, exempt, provisionally exempt and in the public right-of-way are provided in Concept Commercial / Institutional GSI Projects Table. Locations of all identified Concept Commercial / Institutional GSI projects are presented in the Concept Commercial / Institutional GSI Projects Figure (1).



- Permeable Pavement
- Bioretention Basin
- Infiltration Basin / Trench
- Vegetated Filter Strips
- Grass Swales
- Constructed Wetlands
- Combined Sewer Subcatchment
- Municipal Boundaries



**ALCOSAN GSI Project**  
**M-48 thru M-50**  
**SUSTAIN BMP Features**

Path: N:\PROJ\34\34\05\_ALCOSAN\_GSI\_Proj\03 - Task 2.1\Figures\BmpFeatures\_SUSTAIN.mxd

## Swissvale/Rankin Concept Municipal Projects

June 3, 2014

Revised October 7, 2014

\*Note: The drainage area presented in this table is representative of the individual drainage area tributary to each concept municipal project without any revisions to account for overlap, without engineering judgment revisions applied, and without the drainage areas being clipped to their corresponding model subcatchments.

ALCOSAN POC	Model Subcatchment	Concept Municipal Project UID	BMP Type	Concept Municipal Project Area (acres)	Public ROW or Parcel		Concept Municipal Project Individual Drainage Area (acres)*	Concept Municipal Project Individual Project Impervious Drainage Area (acres)*
					Area of Municipal Project in Public ROW (acres)	Area of Municipal Project outside of Public ROW (acres)		
M-48	M-48-00_S1	SWIS_1	PP	0.322	0.315	0.007	0.481	0.322
M-48	M-48-00_S1	SWIS_2	PP	0.285	0.285	0.000	0.413	0.283
M-48	M-48-00_S1	SWIS_3	PP	0.242	0.242	0.000	0.403	0.313
M-48	M-48-00_S1	SWIS_5	PP	0.243	0.243	0.000	0.820	0.307
M-48	M-48-00_S1	SWIS_7	PP	0.279	0.279	0.000	0.757	0.443
M-48	M-48-00_S1	SWIS_8	PP	0.410	0.410	0.000	0.783	0.527
M-48	M-48-00_S1	SWIS_9	PP	0.136	0.136	0.000	1.079	0.476
M-48	M-48-00_S1	SWIS_10	PP	0.340	0.340	0.000	0.983	0.578
M-48	M-48-00_S1	SWIS_11	PP	0.307	0.307	0.000	0.386	0.340
M-48	M-48-00_S1	SWIS_12	PP	0.183	0.183	0.000	1.261	0.461
M-48	M-48-00_S1	SWIS_13	PP	0.090	0.089	0.001	0.663	0.237
M-48	M-48-00_S1	SWIS_14	PP	0.423	0.423	0.000	0.561	0.449
M-48	M-48-00_S1	SWIS_15	PP	0.778	0.778	0.000	0.950	0.808
M-50	M5000-MB-L-02_S1	SWIS_16	PP	0.161	0.158	0.003	0.236	0.106
M-50	M5000-MB-L-02_S1	SWIS_17	PP	0.135	0.135	0.000	0.406	0.245
M-50	M5000-MB-L-02_S1	SWIS_19	PP	0.165	0.165	0.000	0.472	0.320
M-50	M5000-MB-L-02_S1	SWIS_20	PP	0.300	0.300	0.000	0.853	0.573
M-50	M5000-MB-L-02_S1	SWIS_21	PP	0.284	0.284	0.000	0.488	0.374
M-50	M5000-MB-L-02_S1	SWIS_22	PP	0.355	0.355	0.000	0.579	0.422
M-50	M5000-MB-L-02_S1	SWIS_24	PP	0.065	0.065	0.000	0.303	0.174
M-50	M5000-MB-L-02_S1	SWIS_25	PP	0.116	0.103	0.013	0.511	0.239
M-48	M-48-00_S1	SWIS_26	PP	0.328	0.328	0.000	0.412	0.365
M-48	M-48-00_S1	SWIS_27	PP	0.297	0.297	0.000	0.508	0.470
M-48	M-48-00_S1	SWIS_28	PP	0.111	0.111	0.000	0.143	0.127
M-48	M-48-00_S1	SWIS_29	PP	0.343	0.343	0.000	0.742	0.447
M-48	M-48-00_S1	SWIS_30	PP	0.118	0.117	0.001	0.527	0.219
M-48	M-48-00_S1	SWIS_31	PP	0.283	0.283	0.000	0.864	0.468
M-48	M-48-00_S1	SWIS_32	PP	0.317	0.317	0.000	0.448	0.356

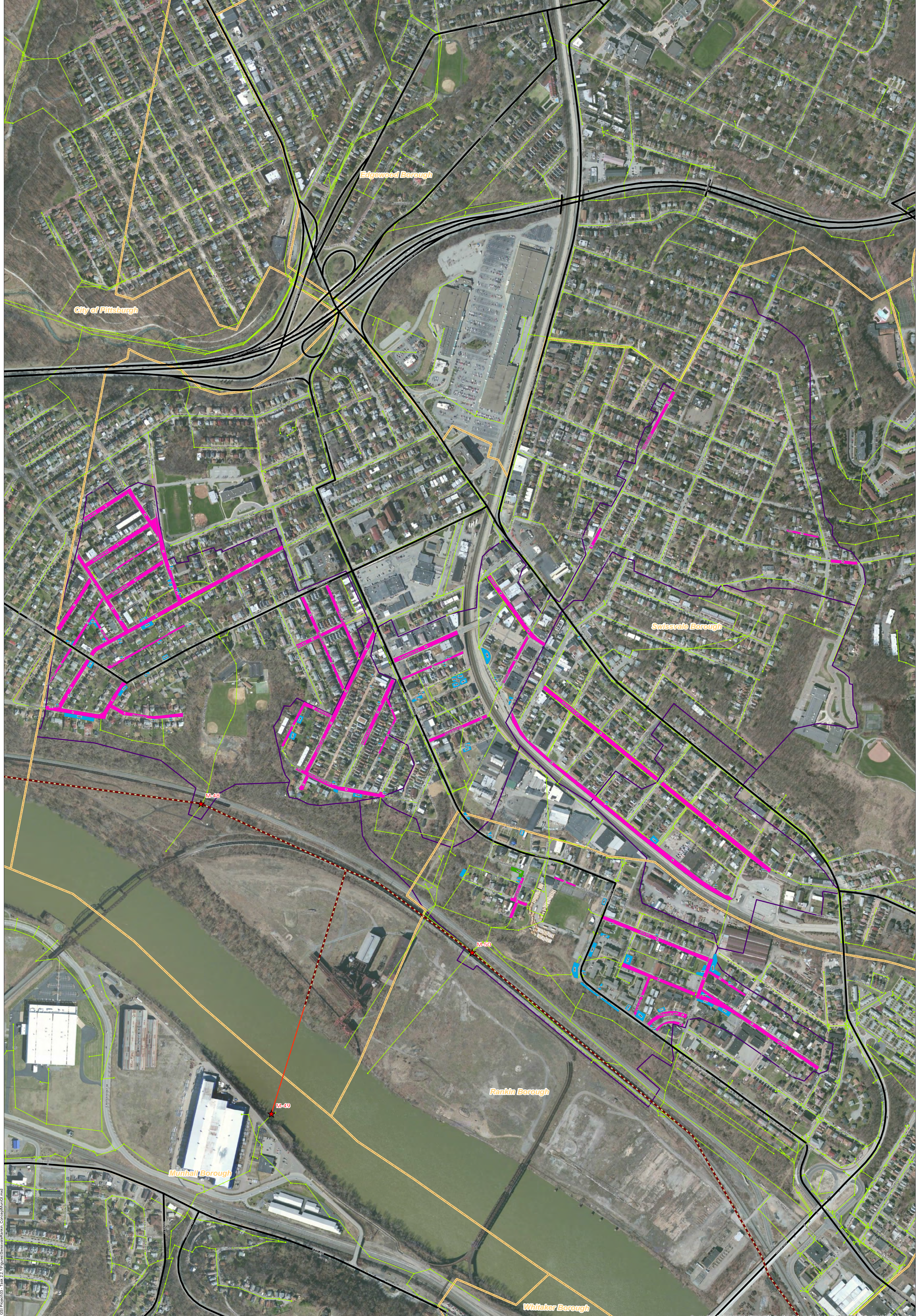
ALCOSAN POC	Model Subcatchment	Concept Municipal Project UID	BMP Type	Concept Municipal Project Area (acres)	Public ROW or Parcel		Concept Municipal Project Individual Drainage Area (acres)*	Concept Municipal Project Individual Project Impervious Drainage Area (acres)*
					Area of Municipal Project in Public ROW (acres)	Area of Municipal Project outside of Public ROW (acres)		
M-48	M-48-00_S1	SWIS_33	PP	0.231	0.231	0.000	0.345	0.295
M-48	M-48-00_S1	SWIS_34	PP	0.179	0.179	0.000	0.783	0.385
M-48	M-48-00_S1	SWIS_35	PP	0.202	0.202	0.000	0.272	0.222
M-50	M5000-MB-L-03_S1	SWIS_36	PP	0.396	0.396	0.000	0.658	0.535
M-50	M5000-MB-L-03_S1	SWIS_40	PP	0.187	0.162	0.025	1.460	0.807
M-50	M5000-MB-L-03_S1	SWIS_41	PP	0.254	0.254	0.000	0.733	0.468
M-50	M5000-POC-L-01_S1	RNKN_42	PP	0.064	0.063	0.001	0.700	0.314
M-50	M5000-POC-L-01_S1	RNKN_44	PP	0.547	0.547	0.000	2.022	0.969
M-50	M5000-POC-L-01_S1	RNKN_45	PP	0.371	0.371	0.000	1.498	0.845
M-50	M5000-POC-L-01_S1	RNKN_46	PP	0.143	0.142	0.001	0.690	0.405
M-50	M5000-POC-L-01_S1	RNKN_47	PP	0.231	0.010	0.221	0.717	0.394
M-50	M5000-POC-L-01_S1	RNKN_48	PP	0.092	0.006	0.086	0.422	0.295
M-50	M5000-POC-L-01_S1	RNKN_53	PP	0.781	0.741	0.040	1.409	0.959
M-50	M5000-MB-S-05_S1	SWIS_60	PP	0.977	0.875	0.102	3.886	2.413
M-50	M5000-MB-L-04_S1	SWIS_62	PP	0.797	0.797	0.000	5.075	2.735
M-50	M5000-MB-L-04_S1	SWIS_65	PP	0.541	0.447	0.094	1.542	1.084
M-50	M5000-MB-L-03_S1	SWIS_67	PP	0.193	0.193	0.000	0.739	0.495
M-50	M5000-MB-L-03_S1	SWIS_68	PP	0.219	0.219	0.000	0.347	0.323
M-50	M5000-MB-L-03_S1	SWIS_69	PP	0.250	0.250	0.000	0.432	0.378
M-50	M5000-MB-L-03_S1	SWIS_72	PP	0.265	0.265	0.000	0.734	0.424
M-50	M5000-POC-L-01_S1	RNKN_73	PP	0.159	0.150	0.009	0.882	0.334
M-50	M5000-MB-L-03_S1	SWIS_74	PP	0.085	0.085	0.000	0.194	0.113
M-50	M5000-MB-L-03_S1	SWIS_75	PP	0.086	0.086	0.000	0.225	0.135
M-50	M5000-MB-L-03_S1	SWIS_76	PP	0.112	0.112	0.000	0.259	0.142
M-50	M5000-POC-L-01_S1	RNKN_77	PP	0.222	0.173	0.049	0.416	0.268
M-50	M5000-MB-L-02_S1	SWIS_81	PP	0.072	0.072	0.000	0.082	0.076
M-50	M5000-POC-L-01_S1	RNKN_82	PP	0.205	0.205	0.000	0.378	0.277
M-50	M5000-MB-S-05_S1	SWIS_83	PP	0.839	0.836	0.003	6.845	3.044
M-50	M5000-MB-L-02_S1	SWIS_84	PP	0.478	0.478	0.000	0.867	0.598
M-48	M-48-00_S1	SWIS_1001	BR	0.012	0.007	0.005	0.022	0.005
M-48	M-48-00_S1	SWIS_1003	BR	0.010	0.007	0.003	0.012	0.005
M-48	M-48-00_S1	SWIS_1005	BR	0.175	0.102	0.073	0.206	0.085
M-48	M-48-00_S1	SWIS_1009	BR	0.013	0.013	0.000	0.046	0.022
M-48	M-48-00_S1	SWIS_1010	BR	0.002	0.002	0.000	0.017	0.000

ALCOSAN POC	Model Subcatchment	Concept Municipal Project UID	BMP Type	Concept Municipal Project Area (acres)	Public ROW or Parcel		Concept Municipal Project Individual Drainage Area (acres)*	Concept Municipal Project Individual Project Impervious Drainage Area (acres)*
					Area of Municipal Project in Public ROW (acres)	Area of Municipal Project outside of Public ROW (acres)		
M-48	M-48-00_S1	SWIS_1011	BR	0.012	0.008	0.004	0.017	0.005
M-48	M-48-00_S1	SWIS_1012	BR	0.048	0.036	0.012	0.057	0.021
M-48	M-48-00_S1	SWIS_1013	BR	0.032	0.025	0.007	0.235	0.108
M-48	M-48-00_S1	SWIS_1014	BR	0.053	0.021	0.032	0.253	0.065
M-48	M-48-00_S1	SWIS_1018	BR	0.037	0.020	0.017	0.045	0.009
M-48	M-48-00_S1	SWIS_1020	BR	0.076	0.031	0.045	0.189	0.057
M-48	M-48-00_S1	SWIS_1022	BR	0.024	0.007	0.017	0.031	0.007
M-48	M-48-00_S1	SWIS_1023	BR	0.022	0.013	0.009	0.061	0.008
M-48	M-48-00_S1	SWIS_1024	BR	0.014	0.008	0.006	0.019	0.007
M-48	M-48-00_S1	SWIS_1025	BR	0.026	0.012	0.014	0.120	0.018
M-48	M-48-00_S1	SWIS_1026	BR	0.032	0.014	0.018	0.117	0.028
M-48	M-48-00_S1	SWIS_1027	BR	0.018	0.008	0.010	0.100	0.047
M-48	M-48-00_S1	SWIS_1029	BR	0.032	0.024	0.008	0.048	0.020
M-48	M-48-00_S1	SWIS_1030	BR	0.057	0.032	0.025	0.063	0.014
M-48	M-48-00_S1	SWIS_1035	BR	0.021	0.017	0.004	0.023	0.009
M-48	M-48-00_S1	SWIS_1038	BR	0.009	0.001	0.008	0.016	0.001
M-48	M-48-00_S1	SWIS_1039	BR	0.007	0.006	0.001	0.011	0.002
M-50	M5000-MB-L-02_S1	SWIS_1040	BR	0.052	0.022	0.030	0.194	0.038
M-50	M5000-MB-L-02_S1	SWIS_1041	BR	0.059	0.024	0.035	0.187	0.025
M-50	M5000-MB-L-02_S1	SWIS_1042	BR	0.023	0.012	0.011	0.077	0.034
M-50	M5000-MB-L-02_S1	SWIS_1043	BR	0.014	0.004	0.010	0.019	0.002
M-50	M5000-MB-L-02_S1	SWIS_1044	BR	0.012	0.006	0.006	0.022	0.005
M-50	M5000-MB-L-02_S1	SWIS_1045	BR	0.012	0.006	0.006	0.513	0.300
M-50	M5000-MB-L-02_S1	SWIS_1047	BR	0.015	0.001	0.014	0.081	0.004
M-50	M5000-MB-L-02_S1	SWIS_1048	BR	0.016	0.006	0.010	0.065	0.044
M-50	M5000-MB-L-02_S1	SWIS_1049	BR	0.051	0.020	0.031	0.066	0.023
M-50	M5000-MB-L-03_S1	SWIS_1051	BR	0.041	0.024	0.017	0.714	0.227
M-50	M5000-MB-L-03_S1	SWIS_1052	BR	0.024	0.006	0.018	0.625	0.195
M-50	M5000-MB-L-03_S1	SWIS_1053	BR	0.046	0.020	0.026	0.116	0.027
M-50	M5000-MB-L-03_S1	SWIS_1054	BR	0.015	0.002	0.013	0.113	0.065
M-50	M5000-MB-L-03_S1	SWIS_1055	BR	0.039	0.012	0.027	0.458	0.212
M-50	M5000-MB-L-03_S1	SWIS_1056	BR	0.030	0.012	0.018	0.038	0.011
M-50	M5000-MB-L-03_S1	SWIS_1057	BR	0.051	0.003	0.048	0.175	0.063
M-50	M5000-MB-L-03_S1	SWIS_1058	BR	0.044	0.001	0.043	0.296	0.085

ALCOSAN POC	Model Subcatchment	Concept Municipal Project UID	BMP Type	Concept Municipal Project Area (acres)	Public ROW or Parcel		Concept Municipal Project Individual Drainage Area (acres)*	Concept Municipal Project Individual Project Impervious Drainage Area (acres)*
					Area of Municipal Project in Public ROW (acres)	Area of Municipal Project outside of Public ROW (acres)		
M-50	M5000-MB-L-03_S1	SWIS_1059	BR	0.018	0.000	0.018	0.241	0.115
M-50	M5000-MB-L-03_S1	SWIS_1060	BR	0.012	0.003	0.009	0.388	0.196
M-50	M5000-MB-L-03_S1	SWIS_1061	BR	0.032	0.007	0.025	0.053	0.014
M-50	M5000-MB-L-03_S1	SWIS_1062	BR	0.116	0.001	0.115	0.388	0.070
M-50	M5000-MB-L-03_S1	SWIS_1063	BR	0.009	0.000	0.009	0.228	0.074
M-50	M5000-POC-L-01_S1	RNKN_1064	BR	0.032	0.011	0.021	0.070	0.070
M-50	M5000-POC-L-01_S1	RNKN_1065	BR	0.032	0.011	0.021	0.040	0.008
M-50	M5000-POC-L-01_S1	RNKN_1066	BR	0.173	0.065	0.108	0.225	0.077
M-50	M5000-POC-L-01_S1	RNKN_1067	BR	0.077	0.031	0.046	0.203	0.038
M-50	M5000-POC-L-01_S1	RNKN_1069	BR	0.035	0.035	0.000	0.040	0.005
M-50	M5000-POC-L-01_S1	RNKN_1070	BR	0.098	0.012	0.086	0.292	0.139
M-50	M5000-POC-L-01_S1	RNKN_1074	BR	0.098	0.036	0.062	0.412	0.077
M-50	M5000-POC-L-01_S1	RNKN_1078	BR	0.020	0.009	0.011	0.218	0.043
M-50	M5000-POC-L-01_S1	RNKN_1079	BR	0.102	0.026	0.076	0.186	0.052
M-50	M5000-POC-L-01_S1	RNKN_1081	BR	0.013	0.004	0.009	0.020	0.002
M-50	M5000-POC-L-01_S1	RNKN_1083	BR	0.017	0.010	0.007	0.026	0.011
M-50	M5000-POC-L-01_S1	RNKN_1084	BR	0.037	0.000	0.037	0.165	0.053
M-50	M5000-POC-L-01_S1	RNKN_1086	BR	0.074	0.036	0.038	0.085	0.015
M-50	M5000-POC-L-01_S1	RNKN_1087	BR	0.116	0.029	0.087	0.159	0.019
M-50	M5000-POC-L-01_S1	RNKN_1088	BR	0.022	0.012	0.010	0.408	0.170
M-50	M5000-POC-L-01_S1	RNKN_1090	BR	0.021	0.005	0.016	0.058	0.008
M-50	M5000-POC-L-01_S1	RNKN_1091	BR	0.125	0.083	0.042	0.193	0.066
M-50	M5000-POC-L-01_S1	RNKN_1092	BR	0.033	0.009	0.024	0.042	0.003
M-50	M5000-POC-L-01_S1	RNKN_1094	BR	0.097	0.047	0.050	0.151	0.057
M-50	M5000-POC-L-01_S1	RNKN_1096	BR	0.020	0.019	0.001	0.023	0.007
M-50	M5000-MB-S-05_S1	SWIS_1098	BR	0.008	0.001	0.007	0.513	0.216
M-50	M5000-MB-S-05_S1	SWIS_1099	BR	0.012	0.007	0.005	0.029	0.015
M-50	M5000-MB-S-05_S1	SWIS_1100	BR	0.064	0.012	0.052	0.290	0.071
M-50	M5000-MB-S-05_S1	SWIS_1101	BR	0.016	0.009	0.007	0.083	0.003
M-50	M5000-POC-L-01_S1	RNKN_1102	BR	0.025	0.008	0.017	0.043	0.004
M-48	M-48-00_S1	SWIS_1108	BR	0.019	0.019	0.000	0.112	0.090
M-48	M-48-00_S1	SWIS_1109	BR	0.008	0.008	0.000	0.011	0.002
M-48	M-48-00_S1	SWIS_1110	BR	0.013	0.007	0.006	0.429	0.138
M-50	M5000-POC-L-01_S1	RNKN_1111	BR	0.029	0.004	0.025	0.036	0.036



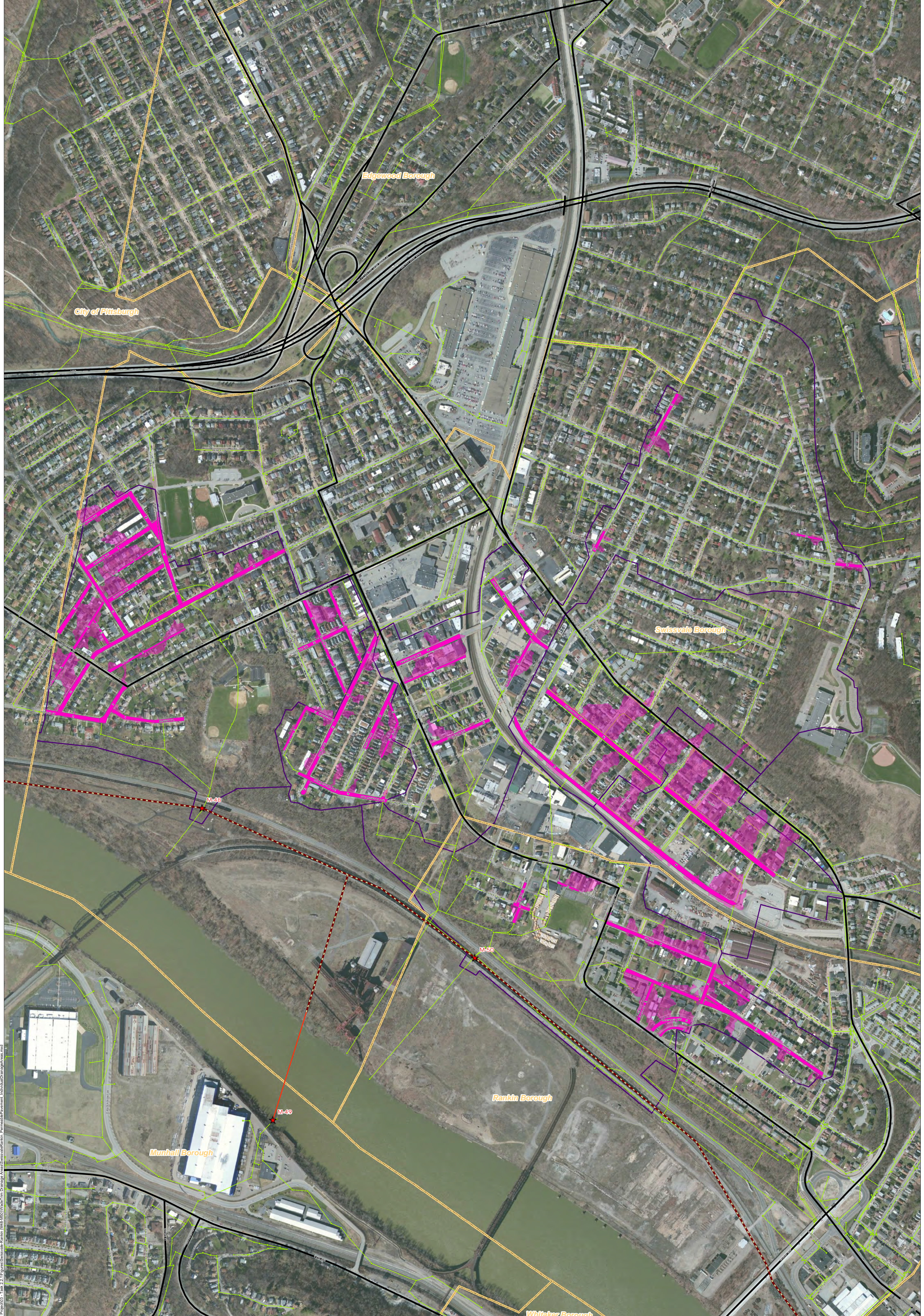
ALCOSAN POC	Model Subcatchment	Concept Municipal Project UID	BMP Type	Concept Municipal Project Area (acres)	Public ROW or Parcel		Concept Municipal Project Individual Drainage Area (acres)*	Concept Municipal Project Individual Project Impervious Drainage Area (acres)*
					Area of Municipal Project in Public ROW (acres)	Area of Municipal Project outside of Public ROW (acres)		
M-50	M5000-MB-L-04_S1	SWIS_1112	BR	0.013	0.006	0.007	0.017	0.005
M-50	M5000-POC-L-01_S1	RNKN_1113	BR	0.035	0.000	0.035	0.097	0.007
M-50	M5000-POC-L-01_S1	RNKN_1114	BR	0.043	0.031	0.012	0.082	0.012
M-50	M5000-MB-L-03_S1	RNKN_1115	BR	0.029	0.027	0.002	0.032	0.004
M-50	M5000-MB-L-02_S1	SWIS_1116	BR	0.020	0.008	0.012	0.027	0.008
M-50	M5000-MB-L-02_S1	SWIS_1117	BR	0.008	0.002	0.006	0.072	0.037
M-50	M5000-POC-L-01_S1	RNKN_4001	VF	0.091	0.022	0.069	0.482	0.270



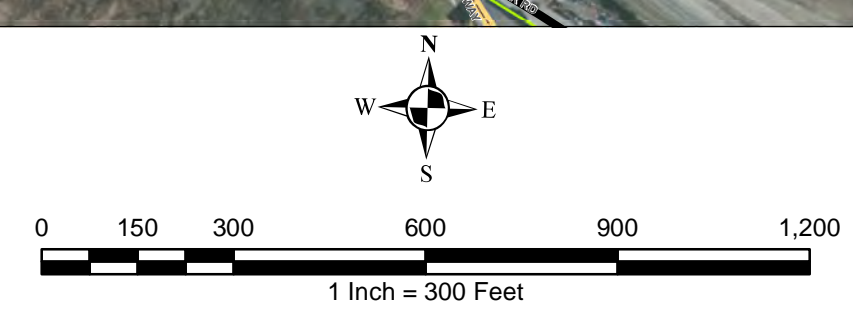
P:\Info\ALCOSAN GSI Project\03 - Task 2.1\Figures\Swissvale\Swissvale\_ConsceptMunGI.mxd  
 ALCOSAN GSI Project\03 - Task 2.1\Figures\Swissvale\Swissvale\_ConsceptMunGI.mxd

Source: ESRI, DeLorme, USGS, AIR, GeoEye, AeroMap, Swire, IGN, US Dept of Defense, The Community

### ALCOSAN GSI Project M-48 thru M-50 Concept Municipal GSI Projects



- ★ ALCOSAN Structures
- ALCOSAN Shallow-Cut Interceptor
- ALCOSAN Deep Tunnel Interceptor
- One Overall Manholes
- One Overall Sewerlines
- Permeable Pavement Municipal Projects
- Permeable Pavement Drainage Areas
- State Roads
- Combined Sewer Subcatchment
- Municipal Boundaries

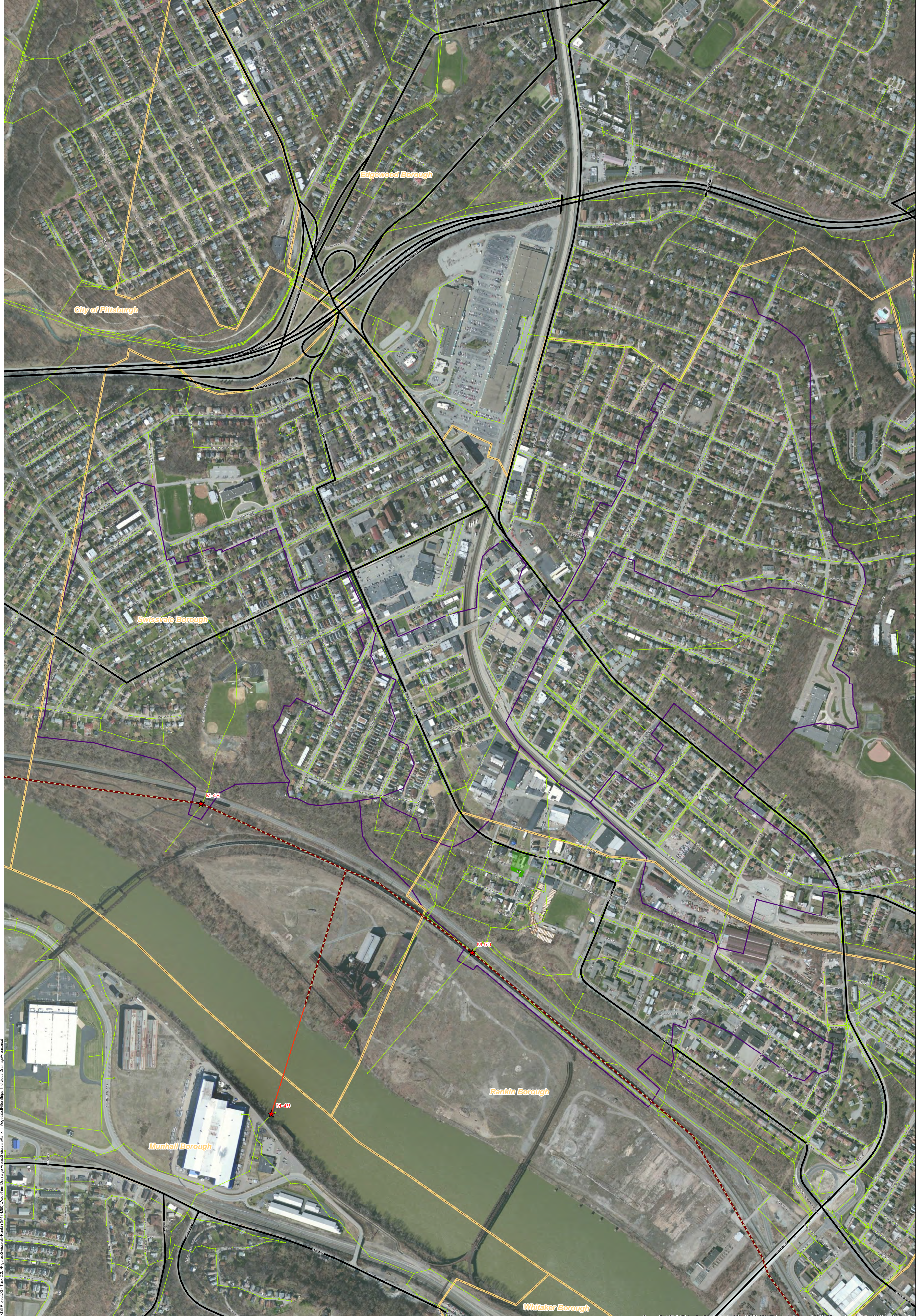


**ALCOSAN GSI Project**  
 Swissvale / Rankin (M-48 thru M-50)  
 Concept Municipal Permeable Pavement GSI Projects  
 Individual Project Drainage Areas

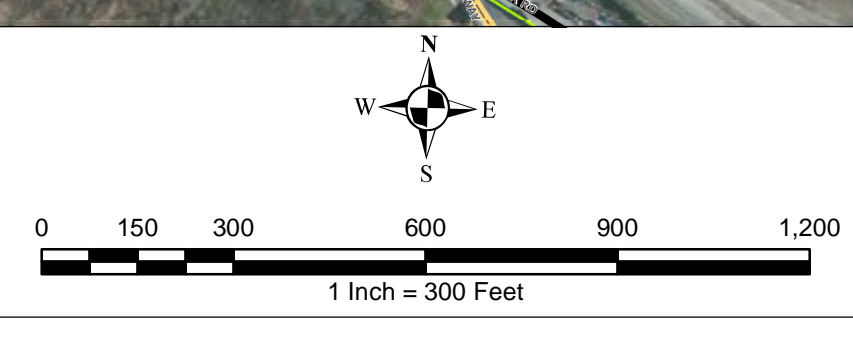
File: I:\PFD\03\34\3456 ALCOSAN GSI Project\03 - Task 2.1\Figures\Swissvale\_Rankin (M&M\_MSD)\164517.mxd Drainage Areas\Swissvale\_Rankin\_PermeablePavement\_IndividualDrainageAreas.mxd

Sources: Esri, DigitalGlobe, GeoEye, IGN, GeoEye, USDA, USGS, AeroGRID, IGN, Esri, Swisstopo, and the GIS User Community





- ★ ALCOSAN Structures
- ALCOSAN Shallow-Cut Interceptor
- ALCOSAN Deep Tunnel Interceptor
- One Overall Manholes
- One Overall Sewerlines
- Vegetated Filter Strip Municipal Projects
- Vegetated Filter Strips Drainage Areas
- State Roads
- Combined Sewer Subcatchment
- Municipal Boundaries



**ALCOSAN GSI Project**  
 Swissvale / Rankin (M-48 thru M-50)  
 Concept Municipal Vegetated Filter Strips GSI Projects  
 Individual Project Drainage Areas

File: N:\P\03\346\346 ALCOSAN GSI Project\03 - Task 2.1\Figures\Swissvale Rankin (M-48 thru M-50)\Map\Map.mxd  
 Date: 11/11/2014 10:58:12 AM  
 User: jk...

**Swissvale-Rankin Concept Commercial / Institutional Permeable Pavement, Green Roof, and Special Case GSI Projects:  
Summary Table**

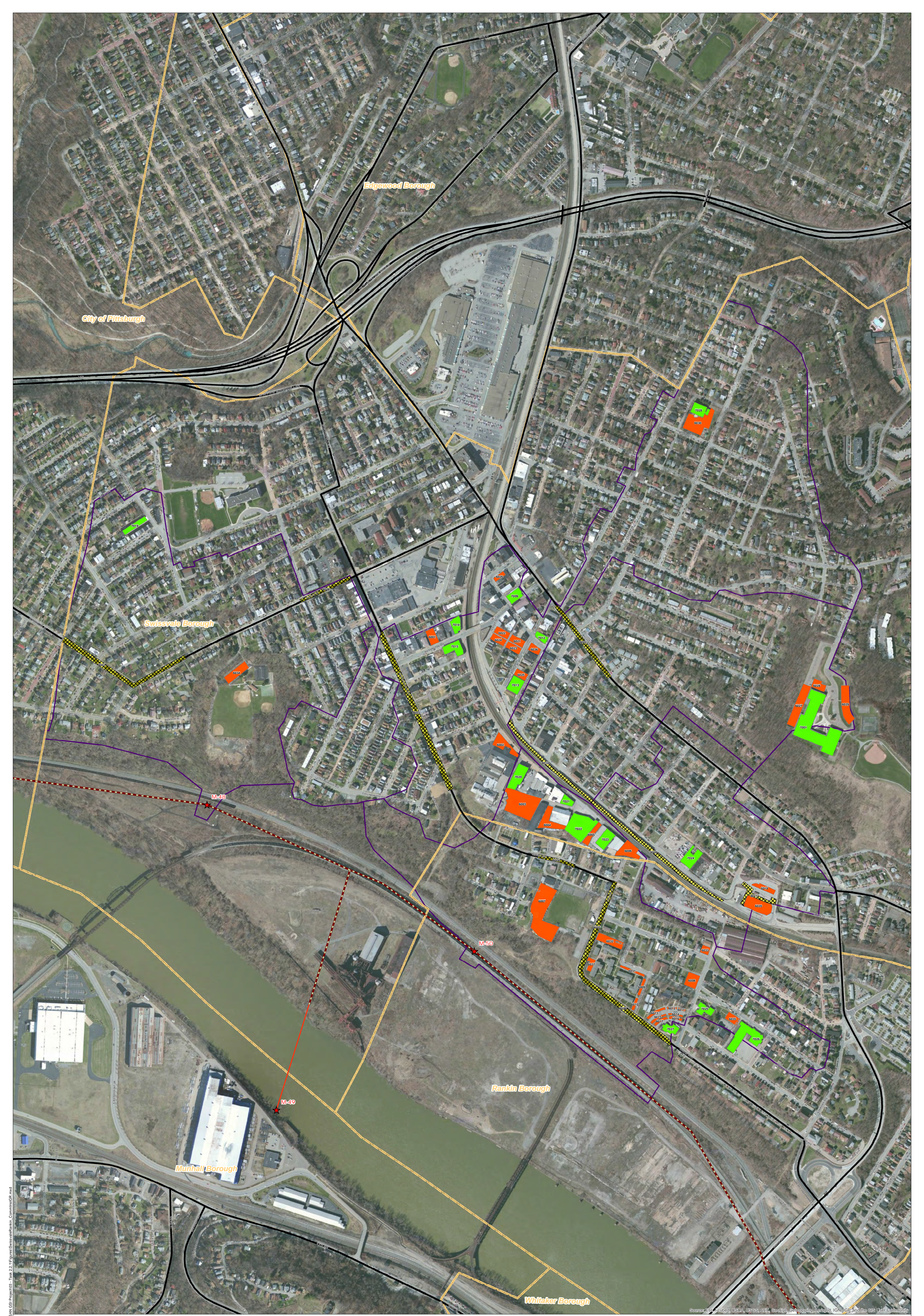
February 21, 2014  
Revised October 10, 2014

<b>ALCOSAN POC</b>	<b>Model Subcatchment</b>	<b>Concept Comm / Inst Project UID</b>	<b>BMP Type</b>	<b>Concept Municipal Project Area (acres)</b>	<b>Taxable (acres)</b>	<b>Exempt (acres)</b>	<b>Provisionally Exempt (acres)</b>	<b>Public ROW (acres)</b>
M-50-00	M5000-MB-L-03_S1	SWIS_6001	CPP	0.187	0.085	0.000	0.000	0.102
M-50-00	M5000-MB-L-03_S1	SWIS_6002	CPP	0.293	0.202	0.000	0.000	0.091
M-50-00	M5000-POC-L-01_S1	SWIS_6003	CPP	1.036	1.033	0.000	0.000	0.003
M-50-00	M5000-POC-L-01_S1	SWIS_6004	CPP	0.371	0.029	0.000	0.000	0.342
M-50-00	M5000-POC-L-01_S1	SWIS_6005	CPP	0.176	0.028	0.000	0.000	0.148
M-50-00	M5000-POC-L-01_S1	SWIS_6006	CPP	0.360	0.330	0.000	0.014	0.016
M-50-00	M5000-POC-L-01_S1	RNKN_6007	CPP	1.319	0.484	0.008	0.000	0.827
M-50-00	M5000-POC-L-01_S1	RNKN_6008	CPP	0.230	0.094	0.000	0.000	0.136
M-50-00	M5000-POC-L-01_S1	RNKN_6009	CPP	0.063	0.058	0.000	0.000	0.005
M-50-00	M5000-POC-L-01_S1	RNKN_6010	CPP	0.051	0.051	0.000	0.000	0.000
M-50-00	M5000-POC-L-01_S1	RNKN_6011	CPP	0.023	0.023	0.000	0.000	0.000
M-50-00	M5000-POC-L-01_S1	RNKN_6012	CPP	0.028	0.028	0.000	0.000	0.000
M-50-00	M5000-POC-L-01_S1	RNKN_6013	CPP	0.073	0.073	0.000	0.000	0.000
M-50-00	M5000-POC-L-01_S1	RNKN_6014	CPP	0.040	0.040	0.000	0.000	0.000
M-50-00	M5000-POC-L-01_S1	RNKN_6015	CPP	0.053	0.053	0.000	0.000	0.000
M-50-00	M5000-POC-L-01_S1	RNKN_6016	CPP	0.045	0.045	0.000	0.000	0.000
M-50-00	M5000-POC-L-01_S1	RNKN_6017	CPP	0.054	0.054	0.000	0.000	0.000
M-50-00	M5000-MB-S-05_S1	SWIS_6019	CPP	0.147	0.000	0.118	0.000	0.029
M-50-00	M5000-MB-S-05_S1	SWIS_6020	CPP	0.467	0.000	0.304	0.000	0.163
M-50-00	M5000-MB-L-03_S1	SWIS_6021	CPP	0.149	0.000	0.039	0.000	0.110
M-50-00	M5000-MB-L-03_S1	SWIS_6022	CPP	0.148	0.001	0.145	0.000	0.002
M-50-00	M5000-MB-L-03_S1	SWIS_6023	CPP	0.141	0.000	0.048	0.000	0.093
M-50-00	M5000-MB-L-03_S1	SWIS_6024	CPP	0.144	0.000	0.143	0.000	0.001
M-50-00	M5000-MB-L-03_S1	SWIS_6025	CPP	0.126	0.123	0.000	0.000	0.003
M-50-00	M5000-MB-L-03_S1	SWIS_6026	CPP	0.073	0.073	0.000	0.000	0.000

<b>ALCOSAN POC</b>	<b>Model Subcatchment</b>	<b>Concept Comm / Inst Project UID</b>	<b>BMP Type</b>	<b>Concept Municipal Project Area (acres)</b>	<b>Taxable (acres)</b>	<b>Exempt (acres)</b>	<b>Provisionally Exempt (acres)</b>	<b>Public ROW (acres)</b>
M-50-00	M5000-MB-L-04_S1	SWIS_6027	CPP	0.509	0.000	0.509	0.000	0.000
M-50-00	M5000-MB-L-04_S1	SWIS_6028	CPP	0.158	0.000	0.158	0.000	0.000
M-50-00	M5000-MB-L-04_S1	SWIS_6029	CPP	0.429	0.000	0.429	0.000	0.000
M-50-00	M5000-MB-L-03_S1	SWIS_6030	CPP	0.605	0.000	0.603	0.000	0.002
M-50-00	M5000-POC-L-01_S1	RNKN_6031	CPP	0.081	0.040	0.000	0.000	0.041
M-50-00	M5000-POC-L-01_S1	RNKN_6032	CPP	0.284	0.277	0.000	0.000	0.007
M-50-00	M5000-POC-L-01_S1	RNKN_6033	CPP	0.090	0.089	0.000	0.000	0.001
M-48-00	M-48-00_S1	SWIS_6034	CPP	0.285	0.000	0.204	0.000	0.081
M-50-00	M5000-POC-L-01_S1	RNKN_6035	CPP	0.148	0.000	0.148	0.000	0.000
M-50-00	M5000-MB-L-03_S1	SWIS_6036	CPP	0.120	0.119	0.000	0.000	0.001
M-50-00	M5000-POC-L-01_S1	RNKN_6037	CPP	0.096	0.093	0.000	0.000	0.003
M-50-00	M5000-MB-L-04_S1	SWIS_7001	GR	1.669	0.000	1.669	0.000	0.000
M-50-00	M5000-MB-L-03_S1	SWIS_7009	GR	0.199	0.000	0.000	0.000	0.199
M-50-00	M5000-MB-L-03_S1	SWIS_7012	GR	0.120	0.001	0.000	0.000	0.119
M-50-00	M5000-MB-L-03_S1	SWIS_7013	GR	0.269	0.265	0.000	0.000	0.004
M-50-00	M5000-MB-L-03_S1	SWIS_7014	GR	0.177	0.018	0.000	0.000	0.159
M-50-00	M5000-MB-L-03_S1	SWIS_7015	GR	0.272	0.136	0.000	0.000	0.136
M-48-00	M-48-00_S1	SWIS_7019	GR	0.184	0.115	0.000	0.000	0.069
M-50-00	M5000-POC-L-01_S1	SWIS_7020	GR	0.370	0.000	0.000	0.000	0.370
M-50-00	M5000-POC-L-01_S1	SWIS_7021	GR	0.131	0.131	0.000	0.000	0.000
M-50-00	M5000-POC-L-01_S1	SWIS_7022	GR	0.756	0.737	0.000	0.000	0.019
M-50-00	M5000-POC-L-01_S1	SWIS_7023	GR	0.290	0.290	0.000	0.000	0.000
M-50-00	M5000-MB-S-05_S1	SWIS_7024	GR	0.327	0.157	0.000	0.000	0.170
M-50-00	M5000-POC-L-01_S1	RNKN_7025	GR	0.183	0.000	0.183	0.000	0.000
M-50-00	M5000-POC-L-01_S1	RNKN_7026	GR	0.634	0.000	0.634	0.000	0.000
M-50-00	M5000-POC-L-01_S1	RNKN_7027	GR	0.165	0.165	0.000	0.000	0.000
M-50-00	M5000-MB-L-03_S1	SWIS_7028	GR	0.236	0.000	0.234	0.000	0.002
M-48-00	M-48-00_S1	SWIS_8001	SRPP	0.980	0.006	0.000	0.000	0.974
M-50-00	M5000-MB-L-04_S1	SWIS_8002	SRPP	0.550	0.003	0.001	0.000	0.546
M-50-00	M5000-MB-L-03_S1	SWIS_8003	SRPP	1.304	0.001	0.000	0.000	1.303

<b>ALCOSAN POC</b>	<b>Model Subcatchment</b>	<b>Concept Comm / Inst Project UID</b>	<b>BMP Type</b>	<b>Concept Municipal Project Area (acres)</b>	<b>Taxable (acres)</b>	<b>Exempt (acres)</b>	<b>Provisionally Exempt (acres)</b>	<b>Public ROW (acres)</b>
M-50-00	M5000-POC-L-01_S1	RNKN_8004	SRPP	0.188	0.002	0.000	0.000	0.186
M-50-00	M5000-POC-L-01_S1	RNKN_8005	SRPP	0.639	0.003	0.022	0.000	0.614
M-50-00	M5000-POC-L-01_S1	RNKN_8006	SRPP	0.856	0.000	0.008	0.000	0.848
M-48-00	M-48-00_S1	SWIS_8008	SRPP	0.277	0.000	0.000	0.000	0.277
M-50-00	M5000-MB-S-05_S1	SWIS_8009	BWPP	0.847	0.000	0.000	0.802	0.045
M-50-00	M5000-MB-L-04_S1	SWIS_8010	BWPP	0.573	0.000	0.000	0.480	0.093
M-50-00	M5000-MB-S-05_S1	SWIS_8011	BWPP	0.285	0.000	0.078	0.000	0.207





★ ALCOSAN Structures  
 ALCOSAN Shallow-Cut Interceptor  
 ALCOSAN Deep Tunnel Interceptor

Special Case  
 Concept Commercial / Institutional Permeable Pavement Projects  
 Concept Green Roof Projects

State Roads  
 Combined Sewer Subcatchment  
 Municipal Boundaries

0 150 300 600 900 1200

1 Inch = 300 Feet

**ALCOSAN GSI Project**  
 Swissvale / Rankin (M-48 thru M-50)  
 Concept Commercial / Institutional,  
 Green Roof, and Special Case GSI Projects