

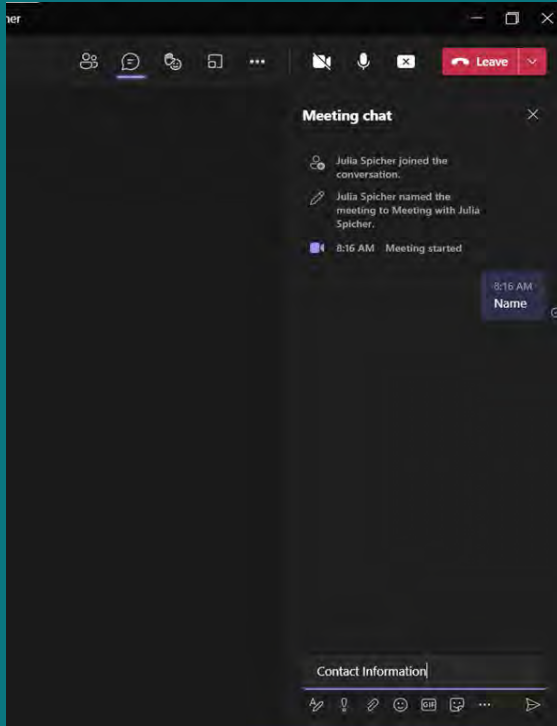


Assessment of Regionalized Regulator Structures

March 3, 2025



Informational Meeting



- This meeting is being recorded for record purposes and for compiling minutes.
- Enter in the chat window
 - Name
 - Company
 - Phone Number
 - Email



Agenda

- Introductions
- Procurement Schedule
- Procurement Requirements
- Project Scope
- Questions and Answers



ALCOSAN Project Team

- Procurement: Suzanne Thomas, Procurement Officer
- Project Manager: Darnetta Craig, PE, Project Engineer III
- Program Manager: Julia Spicher, Manager of Regionalization
- Operations: Nate Carll, PE, Manager of Interceptor Systems
- Director: Mike Lichte, PE, Director of Regional Conveyance



Procurement Schedule

- March 19 at 2 PM – Statement of Qualifications due
- April 2025 Board of Directors Meeting - shortlist
- April 2025 - RFPs issued to short-list
- June 2025 - Proposals due
- July 2025 - Award contract
- August 2025 – Notice to Proceed



Selection Criteria

- Team's resources and ability to perform required tasks and services
- Team's demonstrated knowledge of sewer regulator structures, ability to identify components of those structures, and approach to obtaining detailed dimensions
- Team's experience performing PACP, MACP, GPS, topographic surveys
- Project manager and task leads
- Evaluation of assigned personnel and their geographic location(s) – resumes and experience of key staff and subconsultants
- Familiarity with ALCOSAN and our customer municipal sewer systems
- References and team's experience



Additional Information

- Identify RTK Law-exempt pages of your submittal
- Conflict of Interest forms for each team member
- Read the RFQ
- Follow the Directions
 - SF 330
 - Project-Based Resumes
 - Case Histories – make sure the staff proposed worked on them.



MWDBE/SDVOSB

- MBE/WBE/SDV Participation – include certification
- 10-25% MWBE – total contract value
- 3% SDVOSB – total contract value
- Relevant roles on the contract, part of the evaluation
- ALCOSAN does not accept self-certifications



Project Purpose

ALCOSAN's Regionalization Program includes the transfer of regulators and their associated overflows located along and immediately adjacent to intermunicipal trunk sewers. The Modified Consent Decree (CD) requires ALCOSAN to maintain drawings of these structures and complete a capacity evaluation of newly transferred regulator structures within 1-year following the year of ownership transfer.

Information gathered during the assessment will be used to/by:

- IT-GIS to update ALCOSAN's Asset Management and GIS systems
- Interceptor Systems to properly perform O&M activities
- Wet Weather Programs to install flow monitoring equipment
- ALCOSAN's Program Director (CDM Smith) to complete regulator capacity assessment
- Hydrologic and Hydraulic Analyst to update ALCOSAN's models



Primary Project Tasks

- Regulator structure survey and assessment
- Manhole inspection
- Sewer inspection
- Topographic and GPS surveys
- Record drawings
- Consent Decree compliance
- Coordination with various ALCOSAN programs



Regulator Assessment

- Structure measurement and inspection
 - 3D scan, LIDAR, or other highly accurate method
- Obtain critical elevations
- NASSCO MACP level 2 inspection
- Observe structural condition
- Identify regulating device
- Identify solids and floatables controls
- Confined space entry may be required
- Equipment selection





Manhole Inspection and Survey

- Survey manholes along all influent and effluent lines connected to each regulator
- MACP Level 2 inspections
- GPS coordinates





Sewer Inspection

- Inspect all influent and effluent lines connected to each structure
- Inspect overflow pipes
- PACP inspection





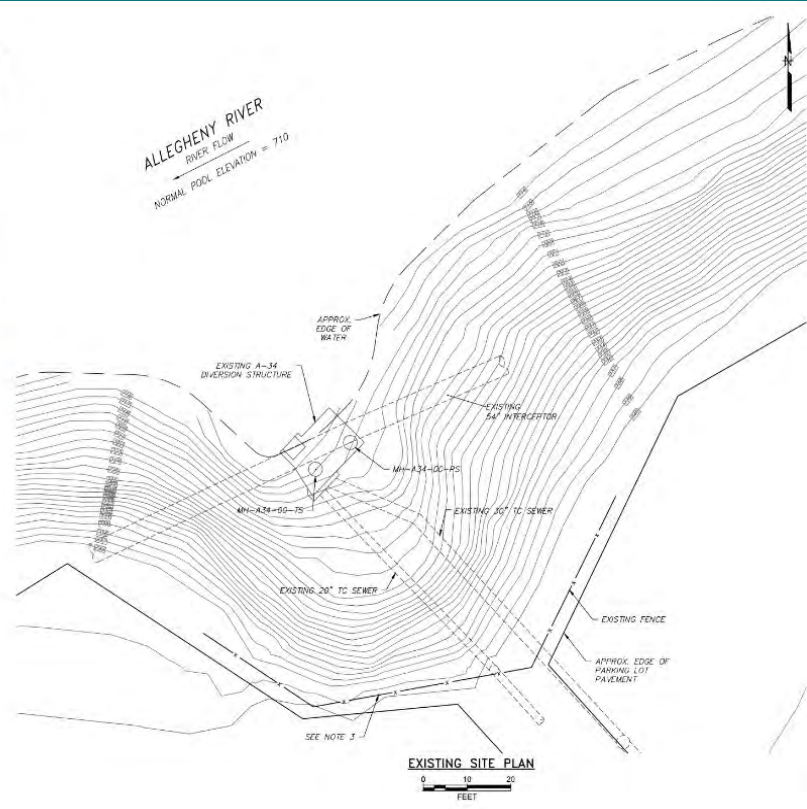
Topographic Survey



LOCATION PLAN
0 100 200
FEET

NOTES:

1. EXISTING SITE PLAN IS BASED ON LIDAR POINTS COLLECTED FROM PAMAP PROGRAM. EXISTING CONTOURS ARE REFLECTIVE OF THOSE OBTAINED FROM PROGRAM. FILL HAS BEEN BROUGHT INTO THE SITE TO FACILITATE INSTALLATION OF BYPASS PUMPING OF THE EXISTING STRUCTURE. THE CONTRACTOR IS RESPONSIBLE TO VERIFY EXISTING GRADE CONDITIONS AT SITE AS REQUIRED TO PERFORM WORK, AND RESTORE THE SITE WHEN COMPLETE AS SHOWN ON THE SITE IMPROVEMENT PLAN.
2. CONTRACTOR SHALL VERIFY EXISTING ELEVATIONS AND SHOWN ON PLANS AND ESTABLISH SURVEY CONTROL POINTS AS REQUIRED.
3. PORTIONS OF EXISTING FENCE HAVE BEEN REMOVED BY OTHERS.





Drawings for each structure

ALLEGHENY COUNTY SANITARY AUTHORITY
3300 PREBLE AVENUE
PITTSBURGH, PA 15233

A-34 DIVERSION STRUCTURE AND DROP SHAFT REPLACEMENT EMERGENCY PROCUREMENT



MEMBERS OF THE BOARD

- Sylvia C. Wilson: Chairperson
- Gregory Jones: Vice-Chairperson
- Jack Shale: Treasurer
- Harry A. Reckhow: Secretary
- John K. Wavroski
- Cory D'Conor
- Brenda Smith
- Arlene Scott Williams: Executive Director
- Jan Oliver: Director of Regional Conveyance

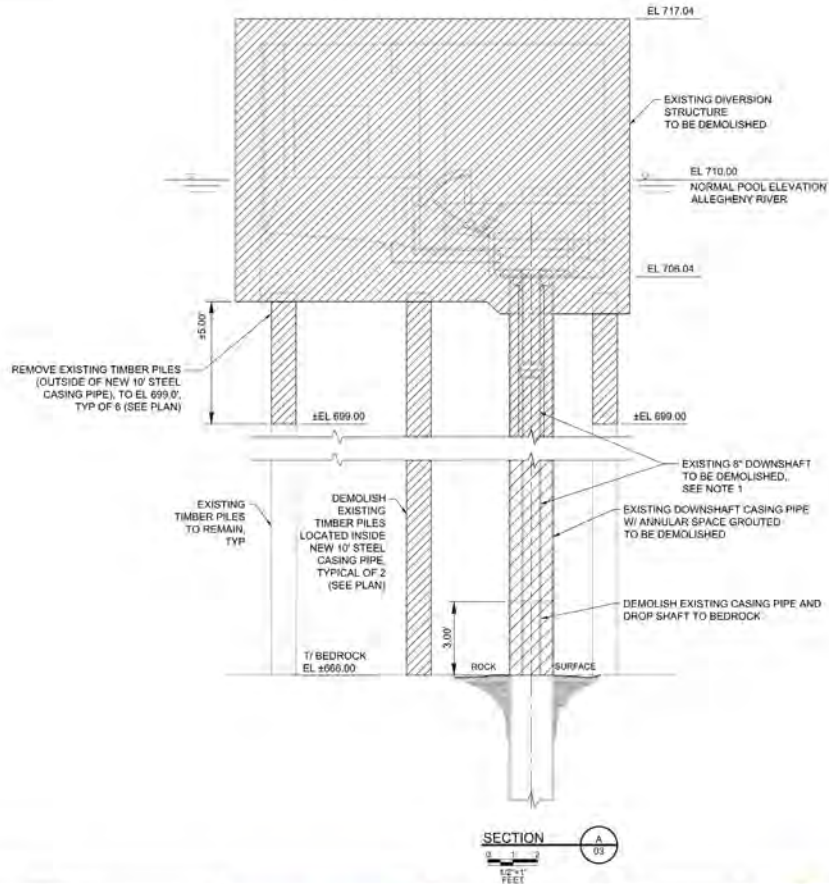
DRAWING INDEX		
SHEET No.	DRAWING No.	DRAWING DESCRIPTION
1	01_A34_CVR	COVER SHEET, INDEX OF DRAWINGS and VICINITY MAP
2	02_A34_SITE_PLN	EXISTING OVERALL SITE PLAN
3	03_A34_SITE_DEMO	EXISTING SITE DEMOLITION PLAN
4	04_A34_DEMO_SEC	DEMOLITION SECTIONS
5	05_A34_PLN	PROPOSED STRUCTURE PLANS
6	06_A34_SEC	PROPOSED STRUCTURE SECTIONS
7	07_A34_REINF_PLN	CONCRETE REINFORCING PLANS
8	08_A34_REINF_SEC	CONCRETE REINFORCING SECTIONS
9	09_A34_SITE_PLN	SITE IMPROVEMENT PLAN
10	10_A34_DTE	DETAILS

AS-BUILT DRAWINGS



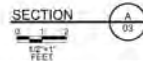
DESIGN SCALE
 1" = 10' (AS SHOWN)
 1" = 20' (AS SHOWN)
 1" = 40' (AS SHOWN)

PLANNING BASINS MAP
 6.7.5
 OCT 1998 REV. 11.2001 (REV. 08)



NOTES:

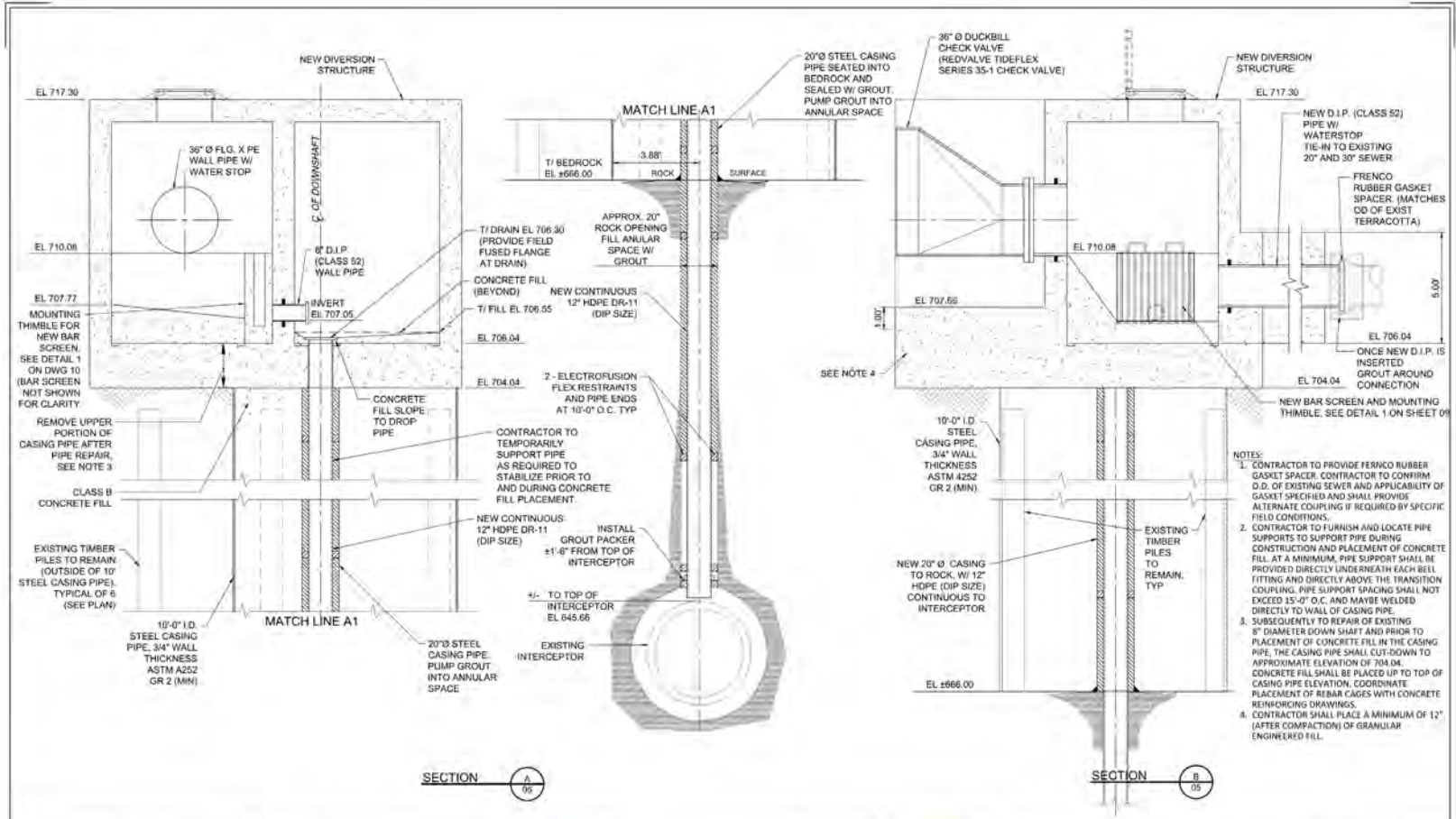
1. THE CONTRACTOR SHALL TAKE CARE TO PROTECT EXISTING DOWNSHAFT DURING REMOVAL AND DEMOLITION FROM DEBRIS, SOIL, CONCRETE, OR OTHER MATERIAL ENTERING THE PIPE DURING DEMOLITION



Designed by:	REV. No.	DATE	REVISION DESCRIPTION	APPV
Drawn by:	0	8/18	AS-BUILT DRAWINGS	CLL
Checked by:				



ALLEIGH COUNTY SANITARY AUTHORITY REGIONAL CONVEYANCE SYSTEM A-34 DIVERSION STRUCTURE AND DROP SHAFT REPLACEMENT 04_A34_DEMO_SEC DEMOLITION SECTION	Contract: CAD File Name: Date: Sheet:
---	--

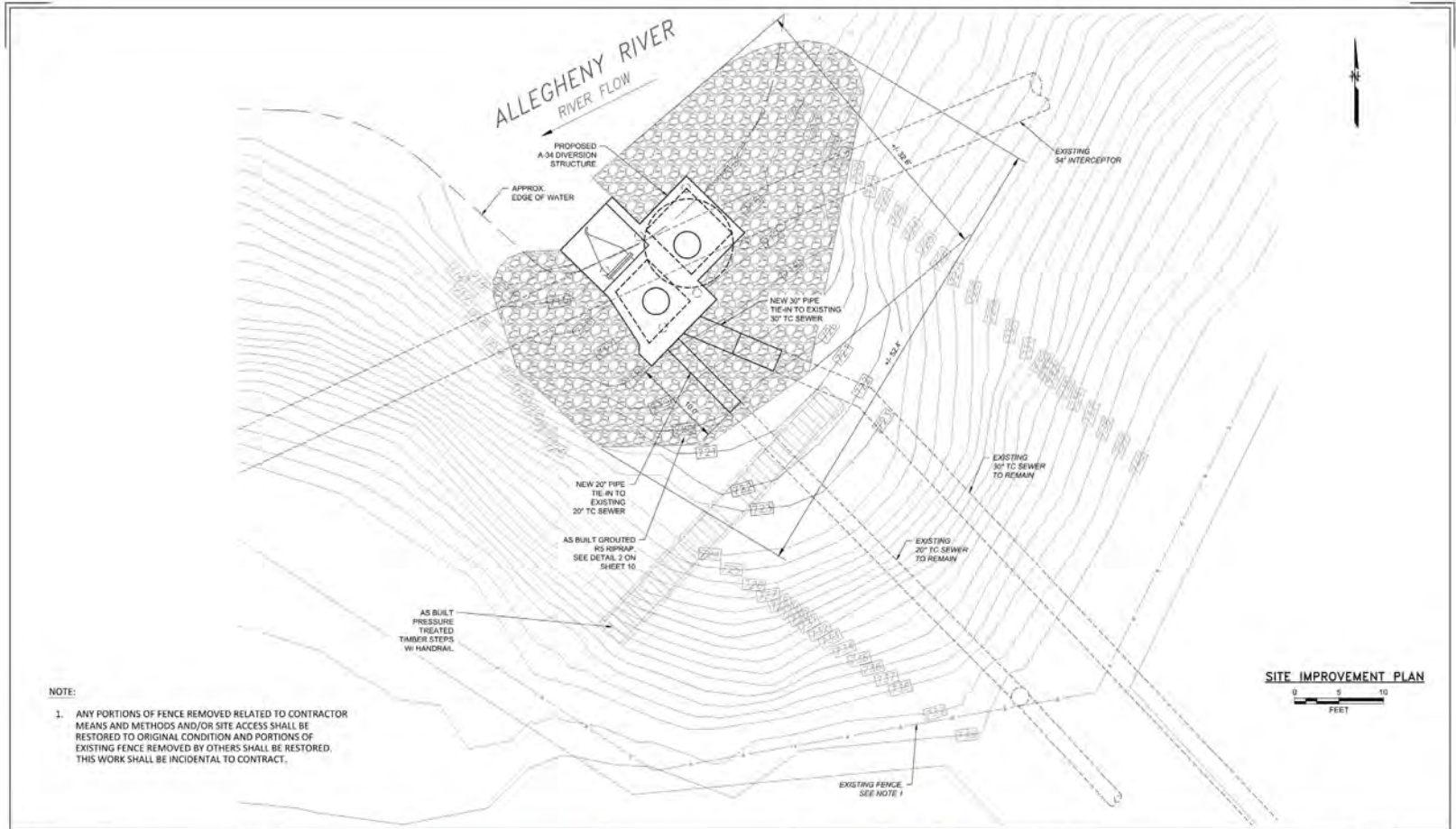


- NOTES:
1. CONTRACTOR TO PROVIDE FERRO RUBBER GASKLET SPACER. CONTRACTOR TO CONFIRM O.D. OF EXISTING SEWER AND APPLICABILITY OF GASKLET SPECIFIED AND SHALL PROVIDE ALTERNATE COUPLING IF REQUIRED BY SPECIFIC FIELD CONDITIONS.
 2. CONTRACTOR TO FURNISH AND LOCATE PIPE SUPPORTS TO SUPPORT PIPE DURING CONSTRUCTION AND PLACEMENT OF CONCRETE FILL. AT A MINIMUM, PIPE SUPPORT SHALL BE FITTING DIRECTLY UNDERNEATH EACH BELL FITTING AND DIRECTLY ABOVE THE TRANSITION COUPLING. PIPE SUPPORT SPACING SHALL NOT EXCEED 15'-0" O.C. AND MAYBE WELDED DIRECTLY TO WALL OF CASING PIPE.
 3. SUBSEQUENTLY TO REPAIR OF EXISTING 3" DIAMETER DOWN SHAFT AND PRIOR TO PLACEMENT OF CONCRETE FILL IN THE CASING PIPE, THE CASING PIPE SHALL CUT-DOWN TO APPROXIMATE ELEVATION OF 704.06. CONCRETE FILL SHALL BE PLACED UP TO TOP OF CASING PIPE ELEVATION. COORDINATE PLACEMENT OF REBAR CAGES WITH CONCRETE REINFORCING DRAWINGS.
 4. CONTRACTOR SHALL PLACE A MINIMUM OF 12" (AFTER COMPACTION) OF GRANULAR ENGINEERED FILL.

Designed by:	REVISION			APPROV
C. LAMPARD	REV No	DATE	DESCRIPTION	CLL
	0	8/18	AS-BUILT DRAWINGS	
Drawn by:				
C. KOYEN				
Checked by:				
M. RYDER				



ALLEGANY COUNTY SANITARY AUTHORITY
REGIONAL CONVEYANCE SYSTEM
A-34 DIVERSION STRUCTURE AND DROP SHAFT REPLACEMENT
06_A34_SEC
PROPOSED STRUCTURE SECTIONS
Contract:
CAD File Name:
Date: 11/02/2010
Sheet: 6 of 10



NOTE:

1. ANY PORTIONS OF FENCE REMOVED RELATED TO CONTRACTOR MEANS AND METHODS AND/OR SITE ACCESS SHALL BE RESTORED TO ORIGINAL CONDITION AND PORTIONS OF EXISTING FENCE REMOVED BY OTHERS SHALL BE RESTORED. THIS WORK SHALL BE INCIDENTAL TO CONTRACT.

SITE IMPROVEMENT PLAN



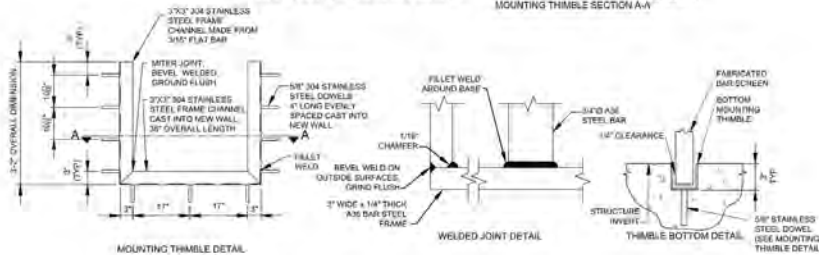
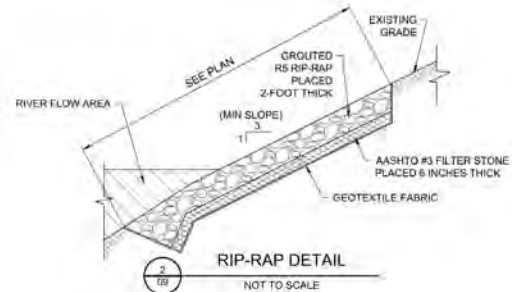
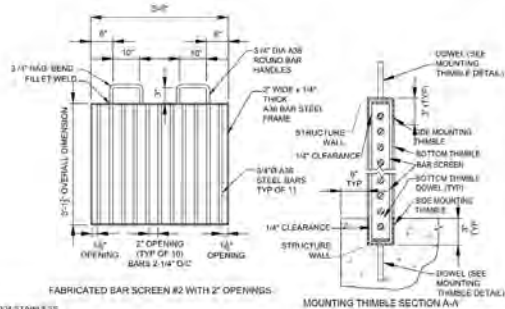
Designed by:	C. LAMPARK
Drawn by:	C. NGUYEN
Checked by:	M. RYDER

REV No	DATE	REVISION DESCRIPTION	APPV
0	8/18	AS-BUILT DRAWINGS	CLL

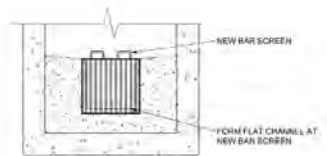
HATCH
 1600 West Chester Street, Suite 1
 Pittsburgh, PA 15228
 PH: 412.486.2000
 FAX: 412.486.2002
 www.hatch.com

alcosan allegheny county sanitary authority
 MILETTA SCOTT WILLIAMS
 EXECUTIVE DIRECTOR, ALCOSSAN
 3300 PRESLE AVE.
 PITTSBURGH, PENNSYLVANIA
 PITTSBURGH, PA 15223
 (412) 756 - 4810
 www.alcosan.org

Contract:	ALLEGHENY COUNTY SANITARY AUTHORITY REGIONAL CONVEYANCE SYSTEM A-34 DIVERSION STRUCTURE AND DROP SHAFT REPLACEMENT
CAD File Name:	09_A34_SITE_PLN.rvt
Date:	11/2/2018
Sheet:	9 of 10



1
06 FABRICATED BAR SCREEN DETAIL
NOT TO SCALE



3
06 FLOW CHANNEL DETAIL AT BAR SCREEN
NOT TO SCALE

Designed by:	REVISION			
Drawn by:	REV No.	DATE	DESCRIPTION	APPROV
Checked by:	0	8/18	AS-BUILT DRAWINGS	CEL



allegheeny county sanitary authority
ALEXIA SCOTT WILLIAMS
DESIGNER (PROJ#104 420048)
3900 FREEBIE AVE
PITTSBURGH, PENNSYLVANIA 15220
(412) 762 - 4810
www.aacosan.org

ALLEGHENY COUNTY SANITARY AUTHORITY
REGIONAL CONVEYANCE SYSTEM
A-34 DIVISION STRUCTURE AND DROF SHAFT REPLACEMENT
10_A34_DET3
DETAILS
Contract:
CAD File Name:
Date:
Sheet:
10/20/2018
13 of 10



CD Compliance Considerations

- This is a Consent Decree task with submission deadlines
- Schedule
 - End of the year following the year of transfer
 - All regulators transferred in 2024 will be given priority
- Regionalization
 - New infrastructure to ALCOSAN
 - Municipal coordination with high level of customer service required
 - Regionalization is on-going, we do not own all the infrastructure
 - Trunk sewer regulator vs interceptor regulator



Questions / Comments?

Contact:

Suzanne Thomas

ALCOSAN Chief Procurement Officer

(412) 732-8020

Procurement@alcosan.org