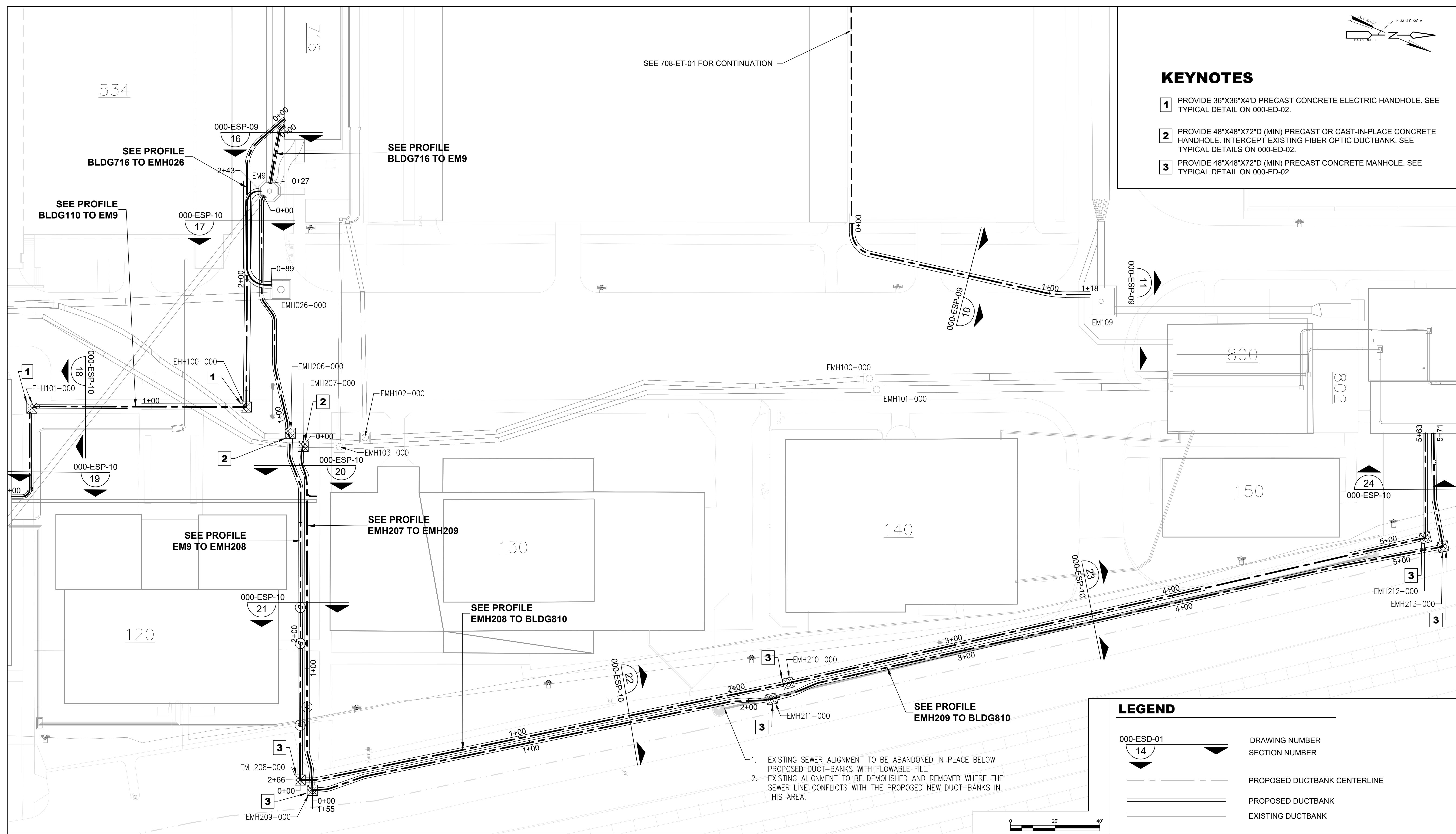


KEYNOTES

- 1** PROVIDE 36"X36"X4"D PRECAST CONCRETE ELECTRIC HANDHOLE. SEE TYPICAL DETAIL ON 000-ED-02.
- 2** PROVIDE 48"X48"X72"D (MIN) PRECAST OR CAST-IN-PLACE CONCRETE HANDHOLE. INTERCEPT EXISTING FIBER OPTIC DUCTBANK. SEE TYPICAL DETAILS ON 000-ED-02.
- 3** PROVIDE 48"X48"X72"D (MIN) PRECAST CONCRETE MANHOLE. SEE TYPICAL DETAIL ON 000-ED-02.



LEGEND

- | | |
|------------------|------------------------------|
| 000-ESD-01 14 | DRAWING NUMBER |
| 14 | SECTION NUMBER |
| --- | PROPOSED DUCTBANK CENTERLINE |
| == | PROPOSED DUCTBANK |
| --- | EXISTING DUCTBANK |

1. EXISTING SEWER ALIGNMENT TO BE ABANDONED IN PLACE BELOW PROPOSED DUCT-BANKS WITH FLOWABLE FILL.
2. EXISTING ALIGNMENT TO BE DEMOLISHED AND REMOVED WHERE THE SEWER LINE CONFLICTS WITH THE PROPOSED NEW DUCT-BANKS IN THIS AREA.

Designed by: KPK
 Drawn by: TSW
 Checked by: KPK

| REV No. | DATE | REVISION DESCRIPTION | APPV |
|---------|---------|----------------------|------|
| A | 7/26/21 | CONFORMED SET | |

Quad3 Architecture
 Engineering
 Environmental Services

412.781.1344
 412.781.1389
 www.quad3.com

SciTek CONSULTANTS, INC.

655 RODI ROAD - PITTSBURGH PA 15225
 PHONE: (412) 371-4460 FAX: (412) 371-4462
 www.scitekanswers.com

COMMONWEALTH OF PENNSYLVANIA
 REGISTERED PROFESSIONAL ENGINEER
JOHN D. HARDING
 ENGINEER
 007491-E
 May 18, 2021

alcosan
 allegheny county sanitary authority

ARLETTA SCOTT WILLIAMS
 EXECUTIVE DIRECTOR, ALCOSAN

3300 PREBLE AVE.
 PITTSBURGH, PA 15233
 (412) 766 - 4810

www.alcosan.org

ALLEGHENY COUNTY SANITARY AUTHORITY
 WASTEWATER TREATMENT PLANT
 ELECTRICAL DISTRIBUTION SYSTEM UPGRADE

000-ESP-05
SITE ELECTRICAL UPDATES PLAN

Contract: 1739
 CAD File Name: 000ESP
 Date: 5 / 25 / 2021
 Sheet: 40 OF 108