



**On-Call
Engineering Services
Informational Meeting**

March 30, 2026



Agenda

- Introductions
- Procurement Schedule
- Procurement Requirements
- Scope of Services
- Questions and Answers



ALCOSAN Project Team

- Project Managers: Dan Sharek, PE Manager of Capital Projects, Conveyance
Jeff Argyros, PE Manager of Capital Projects, Treatment
- Overseeing Directors: Kim Kennedy, PE Director of Engineering & Construction
Mike Lichte, PE Director of Regional Conveyance
- Procurement: Tawanda Stamps Director of Procurement
Ash Eberle Contract Administration Specialist



Procurement Schedule

- May 8 at 2:00 PM – Statement of Qualifications due
 - Electronic submission
 - ALCOSAN cannot guarantee responses to any questions received after April 24 at 2:00PM
- Week of June 8 – Notification of Awards*
- July 23– Contract Award*

* - tentative dates



Submittal

- Follow the Directions
- SF 330 Forms – Part I only
 - Parts A-C – Identify the team
 - Part D – detailed organizational chart with names, titles and roles
 - Project-Based Resumes (Part E)
 - Case Histories (Part F) – make sure proposed staff worked on them
 - Matrix of Case Histories v. Proposed Staff (Part G)



MWDBE/SDVOSB

- Participation rates on past projects will be part of the evaluation
- MBE/WBE/SDVOSB Participation – include certification
- 10-25% MWBE – total contract value
- 3% SDVOSB – total contract value
- ALCOSAN only accepts third-party certifications
 - SBA – SDVOSB
 - PAUCP
 - EMSDC
 - WBENC



Additional Information

- Cover Letter – 2 Pages – executive summary
- Identify RTK Law-exempt pages of your submittal
- Conflict of Interest
 - RFPs: Review current and past projects which may pose a potential or real conflict of interest. If there is a potential and the Proposer would still like to submit, the Proposer shall identify the issue and mitigation efforts



Selection Criteria

- Firm's history and resource capability to perform required services
- Evaluation of potential key personnel
- Related experience (as appropriate) and technical competence
- Subconsultants and Team Experience
- MBE/WBE/SDV Participation on past project(s)
- Familiarity with local area geography and facilities
- Local office within 10-county region (Allegheny, Armstrong, Beaver, Butler, Fayette, Greene, Indiana, Lawrence, Washington and Westmoreland)



Scope of Services

- Project Management and Coordination
- Preliminary Design and Alternatives Development
- Final Design and Preparation of Contract Bid Documents
- Construction Phase Engineering Support (Design Services During Construction)
- Condition Assessment and Closed-Circuit Television and Visual Inspections
- Hydraulic Capacity Analysis, and Hydrologic and Hydraulic Modeling
- Geotechnical Investigations and Analyses
- Environmental Due Diligence, Material Testing, and Hazardous Materials Surveys
- Topographic and Utility Surveys
- Underground Utility Locating
- Property/Easement Mapping and Legal Descriptions
- Permitting Support



Wastewater Treatment Plant

- Annual “Plant and Safety” required upgrades
- Example projects:
 - Main Pump Station pump platform fabrication
 - Main Pump Station architectural crack repairs*
 - Assessment of plant air needs and technology alternative analysis for future of aging compressors*
 - Effluent Flushing Water (EFW) pipe replacement of aging infrastructure*
 - Replacement of aging fluidized bed incinerators
 - Assessment of converting various onsite spaces into storage
 - Replacement of aging sludge cake bins



MPS Architectural Crack Repairs

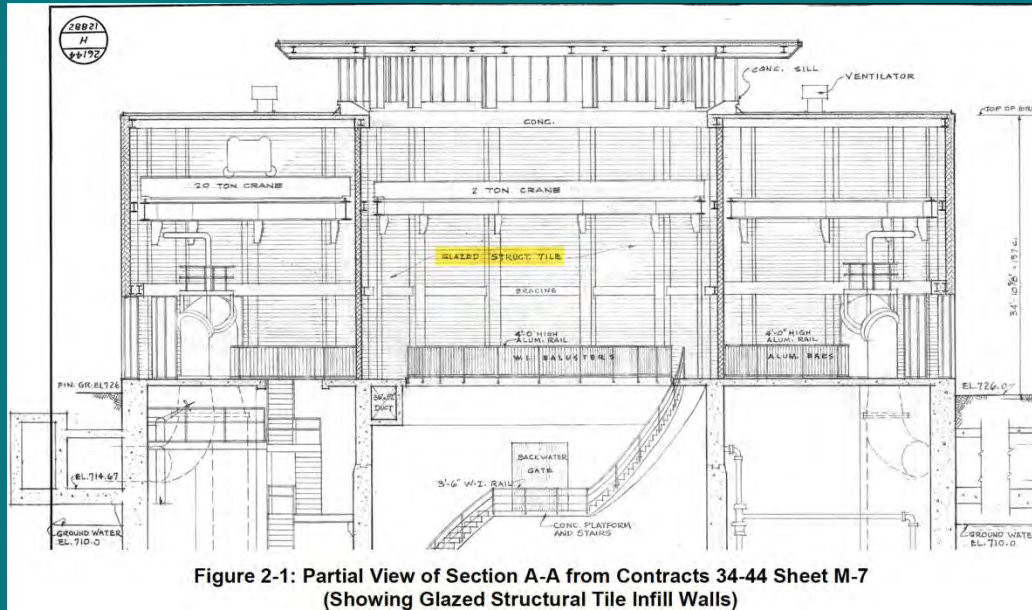
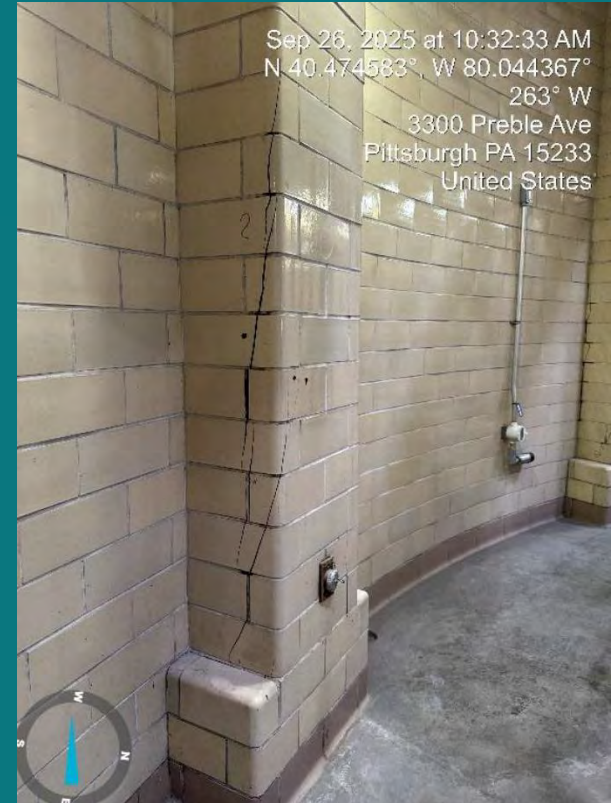
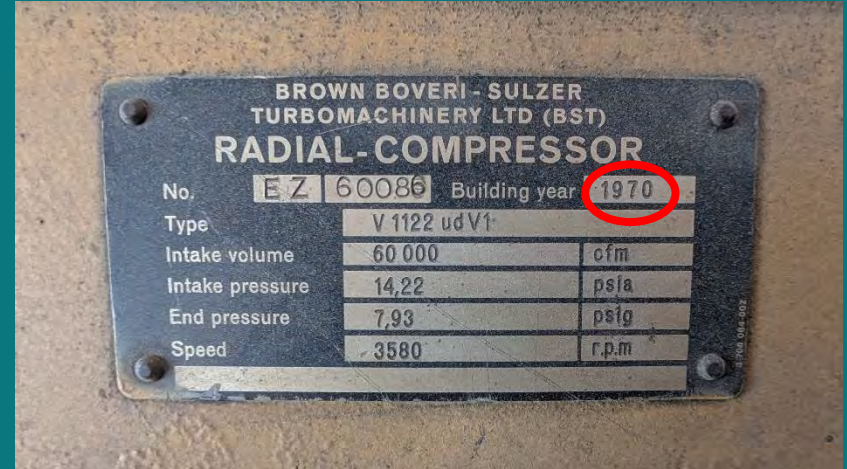


Figure 2-1: Partial View of Section A-A from Contracts 34-44 Sheet M-7 (Showing Glazed Structural Tile Infill Walls)





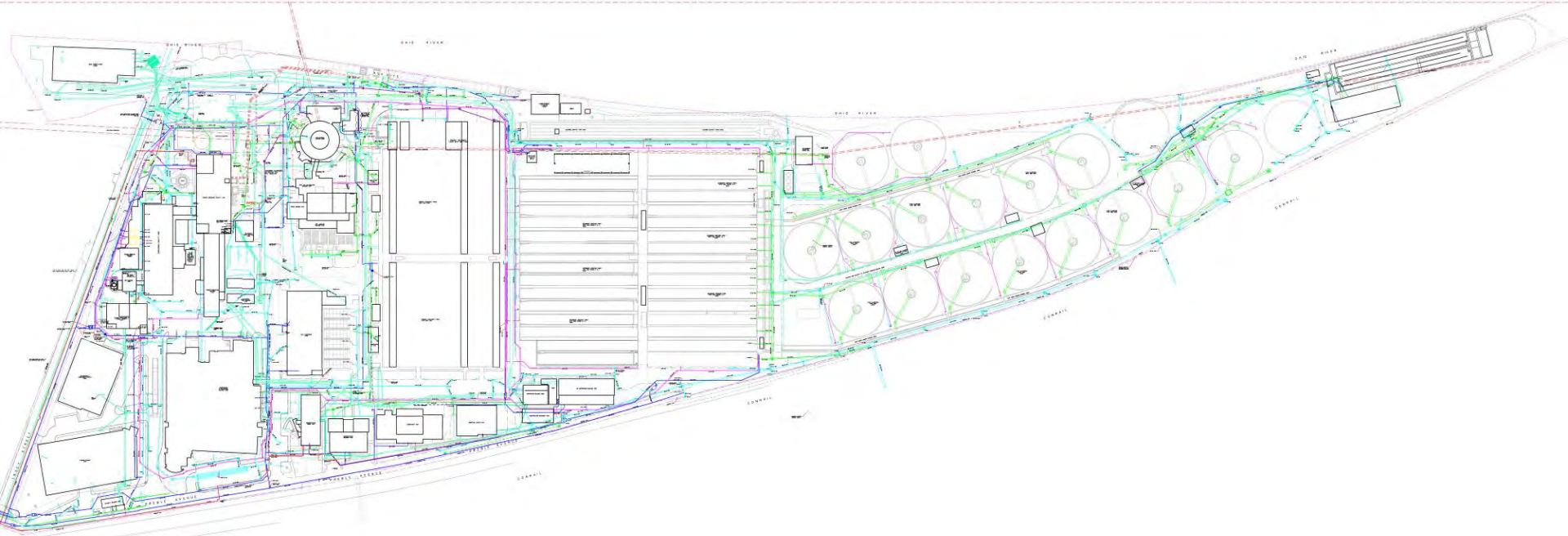
Compressor Assessment





EFW Pipe Replacement (Multi-Phase)

- EFW is magenta in Utility Site Plan below



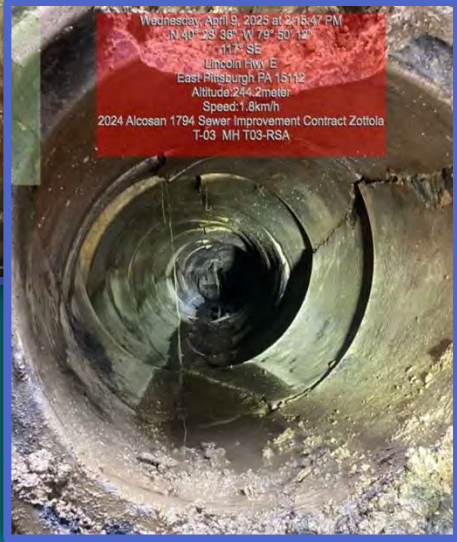
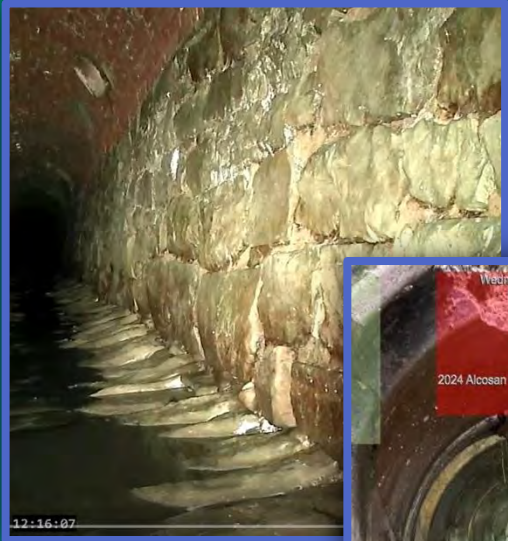


Regional Conveyance System

- Combined sewer collection system piping and appurtenances in an urban setting
- Sanitary sewer collection system piping and appurtenances in an urban setting
- Open-cut and trenchless sewer extension, replacement, and rehabilitation in an urban setting
- Manhole, junction structure and flow divider construction, assessment and rehabilitation
- Flow regulator and outfall assessment and rehabilitation
- Pump station and force main assessment, rehabilitation, and replacement
 - The work at pumping facilities may extend beyond the wastewater process and include, but not be limited to, HVAC, mechanical, electrical, plumbing, instrumentation, 3rd party utility work, grounds, safety, and below and above ground structure and/or building.



Sewer/Manhole/Regulator inspection, assessment, and rehabilitation





Pump station and force main assessment, rehabilitation, and replacement





Questions / Comments?

Contact:

Tawanda Stamps

Director of Procurement

(412) 732-8020

Procurement@alcosan.org