

## 5.7 Study Area 7 – Sharpsburg / Aspinwall

These findings apply to ALCOSAN Points of Connection A-69 through A-78, which include combined sewer systems in Sharpsburg Borough and Aspinwall Borough.

### Sharpsburg/Aspinwall - BMP GIS Features

The SUSTAIN BMP siting tool analysis resulted in identification of a total of 3,031 BMP GIS Features covering 283 acres, which consisted of the following:

**Table 5.7-1 - TOTAL SUSTAIN BMP Features Output**

<b>SUSTAIN BMP Feature Type</b>	<b>Number of Features</b>	<b>Area of BMP Features (Acres)</b>
Permeable Pavement	474	92
Bioretention	1,116	97
Infiltration Basin/Trenches	40	4
Vegetated Filter Strips	229	36
Grass Swales	1,147	53
Constructed Wetlands	25	< 1

Locations of all identified BMP GIS features are presented on the SUSTAIN BMP Features Figure.

Sharpsburg/Aspinwall - Concept Municipal GSI Projects

Based on the BMP features, 240 concept Municipal GSI Projects were identified covering 24 total acres with a corresponding drainage area delineation of 234 total acres and consisted of the following:

**Table 5.7-2 - Summary of Identified Concept Municipal GSI Projects**

<b>Concept GSI Technology</b>	<b>Number of Projects</b>	<b>GSI Project Area (Acres)</b>	<b>Project Drainage Area (Acres)</b>
Permeable Pavement	89	21	202
Bioretention	151	3	31
Infiltration Basin/Trenches	0	0	0
Vegetated Filter Strips	0	0	0
Grass Swales	0	0	0
Constructed Wetlands	0	0	0

Project statistics including ALCOSAN POC, model subcatchment, BMP type, project area, area of project inside and outside of the public right-of-way, tributary drainage area, and tributary impervious drainage area are provided in the Concept Municipal Projects Table. Locations of all identified Concept Municipal GSI projects are presented in the Concept Municipal GSI Projects Figure (1) and the corresponding delineated tributary drainage areas are presented by BMP in the Individual Project Drainage Area Figures (2).

Sharpsburg/Aspinwall - Concept Commercial/Institutional and Special Case GSI Projects

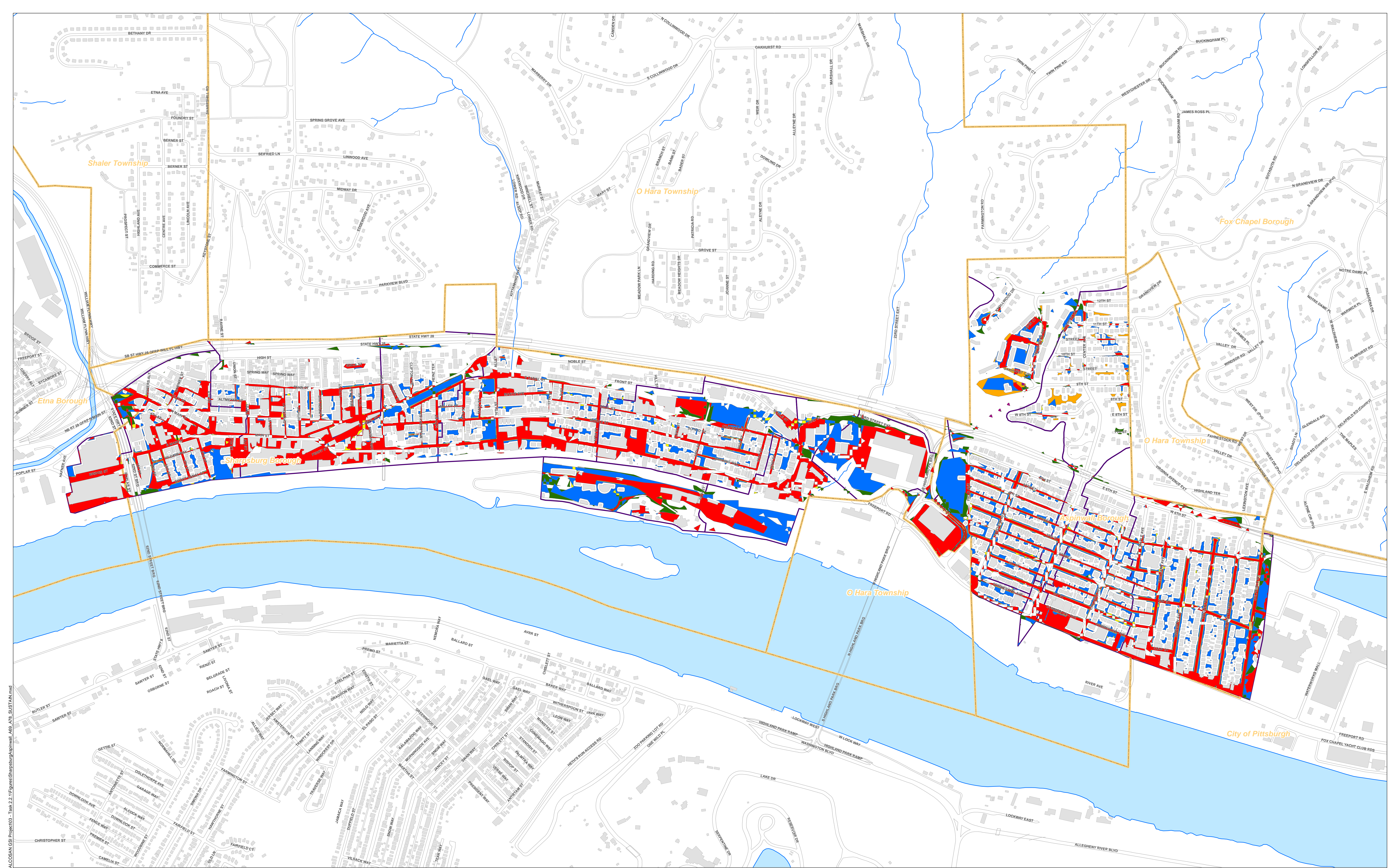
Based on the BMP features, 146 concept Commercial/Institutional and Special Case GSI Projects were identified covering 51 total acres and consisted of the following:

**Table 5.7-3 - Summary of Identified Concept Commercial/Institutional and Special Case GSI Projects**

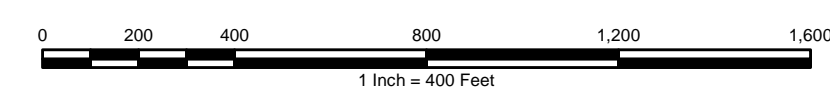
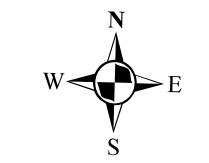
<b>Concept GSI Technology or Special Case Project Category</b>	<b>Number of Projects</b>	<b>GSI Project Area (Acres)</b>
Commercial/Institutional Permeable Pavement	85	27
Commercial/Institutional Green Roofs	49	16
State Route Permeable Pavement	12	8
Busway Permeable Pavement	0	0
Busway Bioretention	0	0

Project statistics including ALCOSAN POC, model subcatchment, BMP type, project area, area of project taxable, exempt, provisionally exempt and in the public right-of-way are provided in Concept Commercial / Institutional GSI Projects Table. Locations of all identified Concept Commercial / Institutional GSI projects are presented in the Concept Commercial / Institutional GSI Projects Figure (1).





- Permeable Pavement
- Bioretention Basin
- Infiltration Basin / Trench
- Vegetated Filter Strips
- Grass Swales
- Constructed Wetlands
- Combined Sewer Subcatchment
- Municipal Boundaries



**ALCOSAN GSI Project**  
**A-69 through A-78**  
**SUSTAIN BMP Features**

Path: N:\PROJECTS\ALCOSAN GSI Project\A-69 through A-78\SUSTAIN.mxd



**Sharpsburg/Aspinwall Concept Municipal Projects: Individual Drainage Areas**

March 30, 2014

Revised October, 7, 2014

\*Note: The drainage area presented in this table is representative of the individual drainage area tributary to each concept municipal project without any revisions to account for overlap, without engineering judgment revisions applied, and without the drainage areas being clipped to their corresponding model subcatchments.

ALCOSAN POC	Model Subcatchment	Concept Municipal Project UID	BMP Type	Concept Municipal Project Area (acres)	Public ROW or Parcel		Concept Municipal Project Individual Drainage Area (acres)*	Concept Municipal Project Individual Project Impervious Drainage Area (acres)*
					Area of Municipal Project in Public ROW (acres)	Area of Municipal Project outside of Public ROW (acres)		
A-69	A-69-00-M1_C1	SHAR_1	PP	0.122	0.112	0.010	4.523	2.362
A-69	A-69-00-M1_C1	SHAR_2	PP	0.310	0.309	0.001	21.154	5.750
A-69	A-69-00-M1_C1	SHAR_3	PP	0.031	0.031	0.000	0.141	0.085
A-69	A-69-00-M1_C1	SHAR_5	PP	0.112	0.103	0.009	18.113	4.051
A-69	A-69-00-M1_C1	SHAR_6	PP	0.232	0.232	0.000	15.772	2.726
A-69	A-69-00-M1_C1	SHAR_8	PP	0.201	0.201	0.000	1.489	1.225
A-69	A-69-00-M1_C1	SHAR_10	PP	0.480	0.473	0.007	1.667	1.398
A-69	A-69-00-M1_C1	SHAR_11	PP	0.093	0.086	0.007	1.390	0.754
A-69	A-69-00-M1_C1	SHAR_12	PP	0.120	0.120	0.000	1.720	0.938
A-69	A-69-00-M1_C1	SHAR_13	PP	0.136	0.136	0.000	0.862	0.463
A-69	A-69-00-M1_C1	SHAR_14	PP	0.109	0.109	0.000	1.608	0.766
A-69	A-69-00-M1_C1	SHAR_15	PP	0.178	0.178	0.000	1.533	0.702
A-69	A-69-00-M1_C1	SHAR_16	PP	0.227	0.226	0.001	2.387	0.990
A-69	A-69-00-M1_C1	SHAR_17	PP	0.163	0.163	0.000	1.320	0.403
A-69	A-69-00-M1_C1	SHAR_20	PP	0.147	0.147	0.000	1.835	1.331
A-70	A-70-00-M1_C1	SHAR_21	PP	0.104	0.065	0.039	1.390	1.232
A-70	A-70-00-M1_C1	SHAR_22	PP	0.109	0.109	0.000	0.889	0.712
A-70	A-70-00-M1_C1	SHAR_23	PP	0.229	0.229	0.000	5.334	2.037
A-70	A-70-00-M1_C1	SHAR_25	PP	0.143	0.143	0.000	7.164	3.279
A-70	A-70-00-M1_C1	SHAR_26	PP	0.101	0.100	0.001	3.744	1.670
A-70	A-70-00-M1_C1	SHAR_27	PP	0.040	0.040	0.000	2.536	1.081
A-70	A-70-00-M1_C1	SHAR_28	PP	0.164	0.164	0.000	3.260	1.991
A-70	A-70-00-M1_C1	SHAR_29	PP	0.241	0.241	0.000	1.896	1.398
A-70	A-70-00-M1_C1	SHAR_30	PP	0.118	0.100	0.018	0.831	0.454
A-70	A-70-00-M1_C1	SHAR_31	PP	0.280	0.272	0.008	11.568	3.977
A-70	A-70-00-M1_C1	SHAR_32	PP	0.195	0.195	0.000	2.355	1.420
A-70	A-70-00-M1_C1	SHAR_33	PP	0.363	0.335	0.028	3.710	1.436
A-70	A-70-00-M1_C1	SHAR_34	PP	0.201	0.196	0.005	2.777	1.311
A-70	A-70-00-M1_C1	SHAR_36	PP	0.128	0.105	0.023	0.689	0.408
A-71	A-71-00-M1_C1	SHAR_37	PP	0.299	0.294	0.005	1.772	0.972
A-71	A-71-00-M1_C1	SHAR_39	PP	0.092	0.007	0.085	1.146	1.102
A-71	A-71-00-M1_C1	SHAR_40	PP	0.210	0.208	0.002	2.032	1.459



ALCOSAN POC	Model Subcatchment	Concept Municipal Project UID	BMP Type	Concept Municipal Project Area (acres)	Public ROW or Parcel		Concept Municipal Project Individual Drainage Area (acres)*	Concept Municipal Project Individual Project Impervious Drainage Area (acres)*
					Area of Municipal Project in Public ROW (acres)	Area of Municipal Project outside of Public ROW (acres)		
A-71	A-71-00-M1_C1	SHAR_42	PP	0.281	0.281	0.000	1.640	1.075
A-71	A-71-00-M1_C1	SHAR_44	PP	0.035	0.034	0.001	0.116	0.042
A-71	A-71-00-M1_C1	SHAR_45	PP	0.217	0.217	0.000	0.446	0.369
A-71	A-71-00-M1_C1	SHAR_46	PP	0.036	0.036	0.000	0.211	0.123
A-71	A-71-00-M1_C1	SHAR_47	PP	0.104	0.104	0.000	4.956	0.840
A-71	A-71-00-M1_C1	SHAR_48	PP	0.264	0.229	0.035	1.425	0.465
A-72	A7200__-POC-L-01_C1	SHAR_49	PP	0.346	0.346	0.000	1.530	0.843
A-72	A7200__-POC-L-01_C1	SHAR_50	PP	0.061	0.061	0.000	0.660	0.232
A-72	A7200__-POC-L-01_C1	SHAR_51	PP	0.127	0.127	0.000	0.509	0.317
A-72	A7200__-POC-L-01_C1	SHAR_52	PP	0.232	0.232	0.000	1.239	0.713
A-72	A7200__-POC-L-01_C1	SHAR_53	PP	0.164	0.158	0.006	0.683	0.381
A-72	A7200__-POC-L-01_C1	SHAR_55	PP	0.183	0.097	0.086	0.819	0.420
A-72	A7200__-POC-L-01_C1	SHAR_56	PP	0.061	0.050	0.011	0.356	0.208
A-72	A7200__-POC-L-01_C1	SHAR_57	PP	0.350	0.336	0.014	1.532	1.088
A-72	A7200__-POC-L-01_C1	SHAR_58	PP	0.734	0.646	0.088	3.968	2.425
A-72	A7200__-POC-L-01_C1	SHAR_59	PP	0.171	0.169	0.002	1.749	0.885
A-72	A7200__-POC-L-01_C1	SHAR_60	PP	0.250	0.250	0.000	1.314	0.709
A-72	A7200__-POC-L-01_C1	SHAR_61	PP	0.376	0.353	0.023	0.822	0.497
A-73	A-73-00-M1_C1	SHAR_62	PP	0.298	0.262	0.036	2.628	1.676
A-73	A-73-00-M1_C1	SHAR_63	PP	0.583	0.582	0.001	1.976	1.272
A-73	A-73-00-M1_C1	SHAR_64	PP	0.082	0.073	0.009	0.250	0.200
A-73	A-73-00-M1_C1	SHAR_66	PP	0.160	0.160	0.000	0.405	0.271
A-73	A-73-00-M1_C1	SHAR_67	PP	0.219	0.202	0.017	0.814	0.493
A-73	A-73-00-M1_C1	SHAR_68	PP	0.360	0.360	0.000	1.586	0.879
A-73	A-73-00-M1_C1	SHAR_69	PP	0.194	0.176	0.018	1.278	0.526
A-73	A-73-00-M1_C1	SHAR_70	PP	0.122	0.016	0.106	0.356	0.194
A-73	A-73-00-M1_C1	SHAR_72	PP	0.062	0.044	0.018	0.179	0.069
A-73	A-73-00-M1_C1	SHAR_73	PP	0.219	0.198	0.021	0.888	0.390
A-73	A-73-00-M1_C1	SHAR_74	PP	0.151	0.151	0.000	0.245	0.232
A-74	INT_A74_C1	SHAR_75	PP	0.274	0.195	0.079	0.357	0.335
A-74	INT_A74_C1	SHAR_76	PP	0.214	0.187	0.027	0.545	0.349
A-74	INT_A74_C1	SHAR_77	PP	0.326	0.313	0.013	0.683	0.625
A-75	A-75-00-M1_C1	ASPN_78	PP	0.327	0.327	0.000	1.392	0.718
A-75	A-75-00-M1_C1	ASPN_79	PP	0.230	0.212	0.018	2.449	1.120
A-75	A-75-00-M1_C1	ASPN_80	PP	0.210	0.202	0.008	0.863	0.407
A-75	A-75-00-M1_C1	ASPN_81	PP	0.234	0.231	0.003	1.246	0.541
A-75	A-75-00-M1_C1	ASPN_82	PP	0.157	0.140	0.017	0.660	0.270
A-75	A-75-00-M1_C1	ASPN_83	PP	0.144	0.144	0.000	0.635	0.278



ALCOSAN POC	Model Subcatchment	Concept Municipal Project UID	BMP Type	Concept Municipal Project Area (acres)	Public ROW or Parcel		Concept Municipal Project Individual Drainage Area (acres)*	Concept Municipal Project Individual Project Impervious Drainage Area (acres)*
					Area of Municipal Project in Public ROW (acres)	Area of Municipal Project outside of Public ROW (acres)		
A-75	A-75-00-M1_C1	ASPN_85	PP	0.575	0.023	0.552	3.880	0.890
A-75	A-75-00-M1_C1	ASPN_86	PP	0.848	0.848	0.000	5.948	3.423
A-76	A-76-00-M1_C1	ASPN_87	PP	0.811	0.811	0.000	5.238	2.756
A-77	A-77-00-M1_C1	ASPN_88	PP	0.280	0.280	0.000	1.262	0.589
A-77	A-77-00-M1_C1	ASPN_89	PP	0.099	0.099	0.000	0.425	0.200
A-77	A-77-00-M1_C1	ASPN_90	PP	0.199	0.199	0.000	0.570	0.292
A-77	A-77-00-M1_C1	ASPN_91	PP	0.191	0.191	0.000	1.393	0.696
A-77	A-77-00-M1_C1	ASPN_92	PP	0.534	0.534	0.000	2.921	1.345
A-77	A-77-00-M1_C1	ASPN_93	PP	0.080	0.080	0.000	1.908	1.024
A-78	A7800__-POC-L-01_C1	ASPN_94	PP	0.293	0.293	0.000	0.445	0.353
A-78	A7800__-POC-L-01_C1	ASPN_95	PP	0.648	0.648	0.000	0.924	0.618
A-78	A7800__-POC-L-01_C1	ASPN_98	PP	0.742	0.741	0.001	1.083	0.828
A-78	A7800__-POC-L-01_C1	ASPN_99	PP	0.330	0.330	0.000	0.384	0.301
A-76	A-76-00-M1_C1	ASPN_102	PP	0.093	0.084	0.009	0.121	0.090
A-75	A-75-00-M1_C1	ASPN_106	PP	0.203	0.203	0.000	0.249	0.205
A-76	A-76-00-M1_C1	ASPN_108	PP	0.341	0.341	0.000	0.524	0.392
A-75	A-75-00-M1_C1	ASPN_109	PP	0.456	0.000	0.456	1.949	0.720
A-72	A7200__-POC-L-01_C1	SHAR_110	PP	0.111	0.111	0.000	0.825	0.389
A-73	A-73-00-M1_C1	SHAR_111	PP	0.089	0.006	0.083	0.275	0.189
A-69	A-69-00-M1_C1	SHAR_1001	BR	0.018	0.000	0.018	0.056	0.031
A-69	A-69-00-M1_C1	SHAR_1002	BR	0.006	0.001	0.005	0.954	0.461
A-69	A-69-00-M1_C1	SHAR_1003	BR	0.006	0.005	0.001	0.019	0.001
A-69	A-69-00-M1_C1	SHAR_1004	BR	0.027	0.006	0.021	0.168	0.009
A-69	A-69-00-M1_C1	SHAR_1006	BR	0.019	0.019	0.000	7.018	1.405
A-69	A-69-00-M1_C1	SHAR_1007	BR	0.020	0.002	0.018	0.916	0.505
A-69	A-69-00-M1_C1	SHAR_1008	BR	0.032	0.026	0.006	0.036	0.001
A-69	A-69-00-M1_C1	SHAR_1009	BR	0.010	0.004	0.006	0.146	0.088
A-71	A-71-00-M1_C1	SHAR_1011	BR	0.161	0.004	0.157	0.339	0.044
A-71	A-71-00-M1_C1	SHAR_1012	BR	0.008	0.004	0.004	0.010	0.001
A-71	A-71-00-M1_C1	SHAR_1013	BR	0.469	0.040	0.429	0.808	0.198
A-72	A7200__-POC-L-01_C1	SHAR_1014	BR	0.004	0.001	0.003	0.005	0.001
A-72	A7200__-POC-L-01_C1	SHAR_1015	BR	0.024	0.012	0.012	0.073	0.024
A-72	A7200__-POC-L-01_C1	SHAR_1017	BR	0.034	0.014	0.020	0.087	0.018
A-73	A-73-00-M1_C1	SHAR_1021	BR	0.012	0.006	0.006	0.022	0.010
A-73	A-73-00-M1_C1	SHAR_1022	BR	0.008	0.002	0.006	0.107	0.028
A-73	A-73-00-M1_C1	SHAR_1023	BR	0.105	0.062	0.043	3.843	1.290
A-73	A-73-00-M1_C1	SHAR_1024	BR	0.009	0.000	0.009	0.012	0.004
A-73	A-73-00-M1_C1	SHAR_1025	BR	0.009	0.008	0.001	0.024	0.013



ALCOSAN POC	Model Subcatchment	Concept Municipal Project UID	BMP Type	Concept Municipal Project Area (acres)	Public ROW or Parcel		Concept Municipal Project Individual Drainage Area (acres)*	Concept Municipal Project Individual Project Impervious Drainage Area (acres)*
					Area of Municipal Project in Public ROW (acres)	Area of Municipal Project outside of Public ROW (acres)		
A-73	A-73-00-M1_C1	SHAR_1026	BR	0.059	0.016	0.043	0.156	0.060
A-73	A-73-00-M1_C1	SHAR_1027	BR	0.077	0.015	0.062	0.141	0.036
A-73	A-73-00-M1_C1	SHAR_1029	BR	0.066	0.030	0.036	0.077	0.026
A-73	A-73-00-M1_C1	SHAR_1030	BR	0.009	0.003	0.006	0.236	0.000
A-74	INT_A74_C1	SHAR_1031	BR	0.023	0.022	0.001	0.032	0.018
A-74	INT_A74_C1	SHAR_1032	BR	0.004	0.004	0.000	0.006	0.004
A-74	INT_A74_C1	SHAR_1033	BR	0.041	0.000	0.041	0.608	0.032
A-74	INT_A74_C1	SHAR_1034	BR	0.013	0.000	0.013	0.024	0.024
A-75	A-75-00-M1_C1	ASPN_1035	BR	0.013	0.013	0.000	0.036	0.007
A-75	A-75-00-M1_C1	ASPN_1036	BR	0.005	0.005	0.000	0.006	0.003
A-74	INT_A74_C1	SHAR_1037	BR	0.006	0.006	0.000	0.009	0.003
A-74A	A74A00 -POC-L-01_C1	SHAR_1038	BR	0.032	0.032	0.000	0.039	0.020
A-75	A-75-00-M1_C1	ASPN_1039	BR	0.010	0.010	0.000	0.068	0.034
A-73	A-73-00-M1_C1	SHAR_1040	BR	0.019	0.004	0.015	0.092	0.092
A-75	A-75-00-M1_C1	ASPN_1044	BR	0.006	0.006	0.000	0.016	0.002
A-75	A-75-00-M1_C1	ASPN_1046	BR	0.003	0.002	0.001	0.102	0.053
A-75	A-75-00-M1_C1	ASPN_1048	BR	0.003	0.003	0.000	0.011	0.003
A-75	A-75-00-M1_C1	ASPN_1049	BR	0.002	0.002	0.000	0.131	0.046
A-75	A-75-00-M1_C1	ASPN_1050	BR	0.036	0.036	0.000	1.526	0.642
A-75	A-75-00-M1_C1	ASPN_1052	BR	0.017	0.017	0.000	0.058	0.016
A-75	A-75-00-M1_C1	ASPN_1054	BR	0.018	0.018	0.000	0.129	0.048
A-75	A-75-00-M1_C1	ASPN_1055	BR	0.008	0.008	0.000	0.017	0.002
A-75	A-75-00-M1_C1	ASPN_1056	BR	0.004	0.004	0.000	0.006	0.002
A-75	A-75-00-M1_C1	ASPN_1057	BR	0.013	0.013	0.000	0.027	0.006
A-75	A-75-00-M1_C1	ASPN_1058	BR	0.002	0.000	0.002	0.024	0.005
A-75	A-75-00-M1_C1	ASPN_1059	BR	0.002	0.001	0.001	0.135	0.064
A-75	A-75-00-M1_C1	ASPN_1060	BR	0.003	0.002	0.001	0.005	0.003
A-75	A-75-00-M1_C1	ASPN_1061	BR	0.006	0.002	0.004	0.470	0.142
A-75	A-75-00-M1_C1	ASPN_1062	BR	0.006	0.006	0.000	0.011	0.002
A-75	A-75-00-M1_C1	ASPN_1063	BR	0.014	0.014	0.000	0.076	0.037
A-75	A-75-00-M1_C1	ASPN_1064	BR	0.004	0.004	0.000	0.017	0.000
A-75	A-75-00-M1_C1	ASPN_1065	BR	0.015	0.015	0.000	0.066	0.023
A-75	A-75-00-M1_C1	ASPN_1066	BR	0.031	0.031	0.000	0.263	0.105
A-75	A-75-00-M1_C1	ASPN_1067	BR	0.014	0.014	0.000	0.049	0.003
A-75	A-75-00-M1_C1	ASPN_1068	BR	0.008	0.008	0.000	0.017	0.002
A-75	A-75-00-M1_C1	ASPN_1069	BR	0.003	0.002	0.001	0.011	0.001
A-75	A-75-00-M1_C1	ASPN_1070	BR	0.017	0.015	0.002	0.624	0.296
A-75	A-75-00-M1_C1	ASPN_1071	BR	0.043	0.031	0.012	0.257	0.113

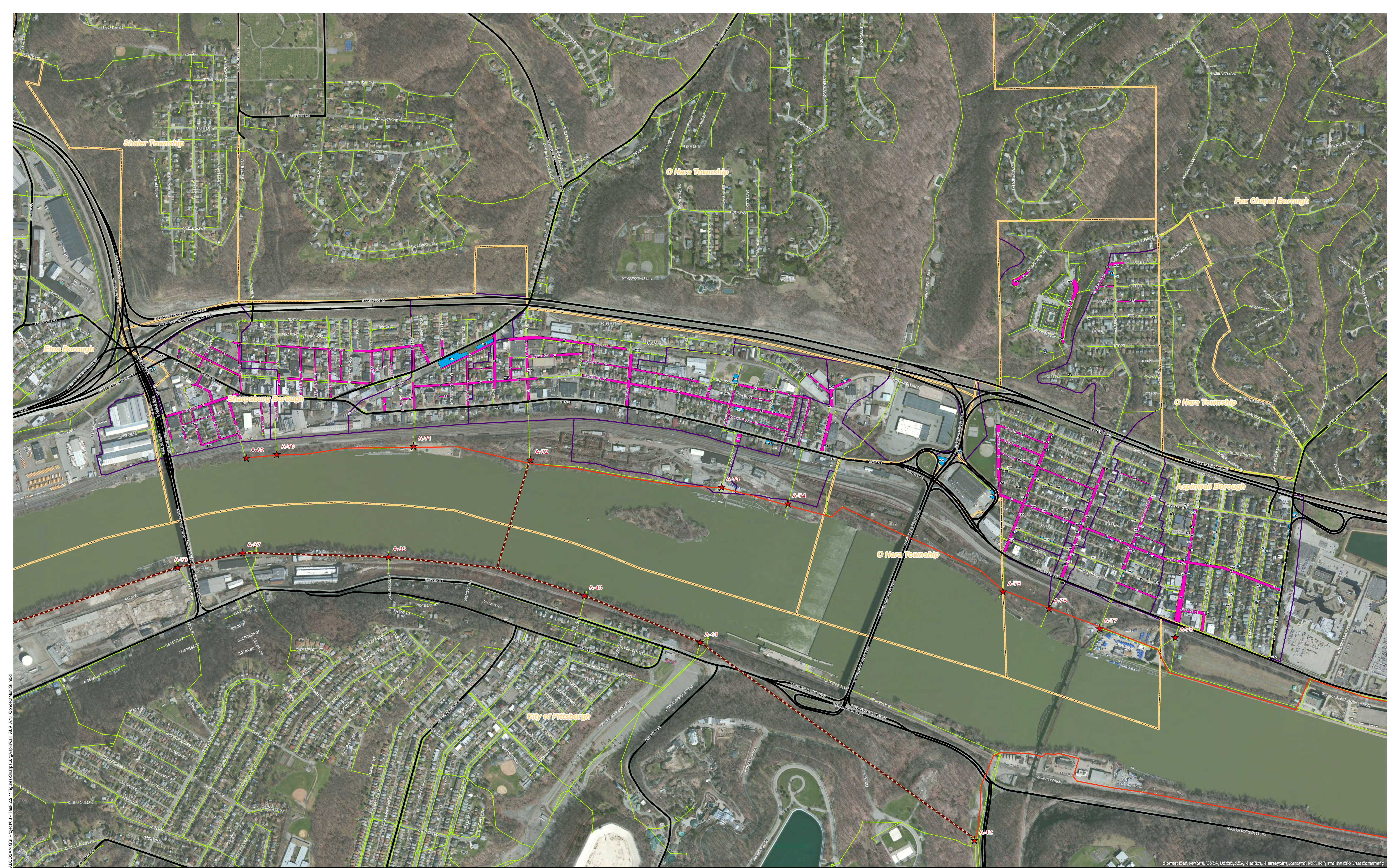
ALCOSAN POC	Model Subcatchment	Concept Municipal Project UID	BMP Type	Concept Municipal Project Area (acres)	Public ROW or Parcel		Concept Municipal Project Individual Drainage Area (acres)*	Concept Municipal Project Individual Project Impervious Drainage Area (acres)*
					Area of Municipal Project in Public ROW (acres)	Area of Municipal Project outside of Public ROW (acres)		
A-75	A-75-00-M1_C1	ASPN_1072	BR	0.003	0.003	0.000	1.026	0.537
A-75	A-75-00-M1_C1	ASPN_1073	BR	0.013	0.000	0.013	0.015	0.005
A-75	A-75-00-M1_C1	ASPN_1077	BR	0.010	0.000	0.010	0.134	0.054
A-75	A-75-00-M1_C1	ASPN_1078	BR	0.013	0.000	0.013	0.015	0.015
A-75	A-75-00-M1_C1	ASPN_1079	BR	0.007	0.007	0.000	0.010	0.004
A-75	A-75-00-M1_C1	ASPN_1080	BR	0.008	0.008	0.000	0.033	0.005
A-76	A-76-00-M1_C1	ASPN_1081	BR	0.010	0.010	0.000	0.050	0.015
A-76	A-76-00-M1_C1	ASPN_1082	BR	0.058	0.024	0.034	0.097	0.011
A-75	A-75-00-M1_C1	ASPN_1083	BR	0.142	0.142	0.000	0.155	0.015
A-76	A-76-00-M1_C1	ASPN_1084	BR	0.004	0.004	0.000	0.241	0.061
A-76	A-76-00-M1_C1	ASPN_1085	BR	0.005	0.000	0.005	0.007	0.000
A-75	A-75-00-M1_C1	ASPN_1086	BR	0.080	0.015	0.065	0.558	0.398
A-75	A-75-00-M1_C1	ASPN_1087	BR	0.029	0.000	0.029	0.143	0.057
A-76	A-76-00-M1_C1	ASPN_1088	BR	0.010	0.010	0.000	0.032	0.005
A-76	A-76-00-M1_C1	ASPN_1089	BR	0.010	0.010	0.000	0.062	0.009
A-76	A-76-00-M1_C1	ASPN_1090	BR	0.019	0.010	0.009	0.030	0.005
A-76	A-76-00-M1_C1	ASPN_1091	BR	0.006	0.006	0.000	0.010	0.005
A-76	A-76-00-M1_C1	ASPN_1093	BR	0.006	0.006	0.000	0.053	0.016
A-76	A-76-00-M1_C1	ASPN_1095	BR	0.015	0.015	0.000	0.187	0.080
A-76	A-76-00-M1_C1	ASPN_1096	BR	0.006	0.006	0.000	0.348	0.146
A-76	A-76-00-M1_C1	ASPN_1097	BR	0.015	0.015	0.000	0.087	0.031
A-76	A-76-00-M1_C1	ASPN_1098	BR	0.004	0.004	0.000	0.019	0.001
A-76	A-76-00-M1_C1	ASPN_1099	BR	0.010	0.010	0.000	0.051	0.003
A-76	A-76-00-M1_C1	ASPN_1100	BR	0.005	0.005	0.000	0.570	0.279
A-77	A-76-00-M1_C1	ASPN_1101	BR	0.004	0.004	0.000	0.009	0.005
A-76	A-76-00-M1_C2	ASPN_1102	BR	0.007	0.006	0.001	0.021	0.003
A-76	A-76-00-M1_C1	ASPN_1103	BR	0.004	0.004	0.000	1.454	0.715
A-76	A-76-00-M1_C2	ASPN_1104	BR	0.003	0.003	0.000	0.009	0.001
A-76	A-76-00-M1_C2	ASPN_1106	BR	0.005	0.000	0.005	0.239	0.029
A-76	A-76-00-M1_C2	ASPN_1107	BR	0.008	0.008	0.000	0.010	0.003
A-77	A-77-00-M1_C1	ASPN_1108	BR	0.015	0.008	0.007	0.025	0.002
A-76	A-76-00-M1_C1	ASPN_1109	BR	0.018	0.016	0.002	0.032	0.006
A-77	A-77-00-M1_C1	ASPN_1111	BR	0.016	0.016	0.000	0.125	0.047
A-77	A-77-00-M1_C1	ASPN_1115	BR	0.009	0.009	0.000	1.264	0.564
A-77	A-77-00-M1_C1	ASPN_1116	BR	0.009	0.009	0.000	0.033	0.003
A-77	A-77-00-M1_C1	ASPN_1117	BR	0.011	0.011	0.000	0.231	0.083
A-77	A-77-00-M1_C1	ASPN_1118	BR	0.014	0.014	0.000	0.087	0.050
A-77	A-77-00-M1_C1	ASPN_1119	BR	0.014	0.014	0.000	0.073	0.036



ALCOSAN POC	Model Subcatchment	Concept Municipal Project UID	BMP Type	Concept Municipal Project Area (acres)	Public ROW or Parcel		Concept Municipal Project Individual Drainage Area (acres)*	Concept Municipal Project Individual Project Impervious Drainage Area (acres)*
					Area of Municipal Project in Public ROW (acres)	Area of Municipal Project outside of Public ROW (acres)		
A-77	A-77-00-M1_C1	ASPN_1120	BR	0.010	0.006	0.004	0.121	0.047
A-77	A-77-00-M1_C1	ASPN_1121	BR	0.037	0.029	0.008	0.109	0.051
A-77	A-77-00-M1_C1	ASPN_1123	BR	0.016	0.016	0.000	0.081	0.025
A-77	A-77-00-M1_C1	ASPN_1124	BR	0.009	0.009	0.000	0.012	0.003
A-77	A-77-00-M1_C1	ASPN_1125	BR	0.008	0.008	0.000	0.063	0.019
A-77	A-77-00-M1_C1	ASPN_1126	BR	0.022	0.012	0.010	0.094	0.032
A-77	A-77-00-M1_C1	ASPN_1127	BR	0.009	0.007	0.002	0.058	0.016
A-77	A-77-00-M1_C1	ASPN_1128	BR	0.007	0.003	0.004	0.082	0.027
A-77	A-77-00-M1_C1	ASPN_1129	BR	0.006	0.004	0.002	0.038	0.012
A-77	A-77-00-M1_C1	ASPN_1130	BR	0.013	0.004	0.009	0.075	0.032
A-77	A-77-00-M1_C1	ASPN_1133	BR	0.006	0.002	0.004	0.030	0.005
A-77	A-77-00-M1_C1	ASPN_1134	BR	0.019	0.015	0.004	0.629	0.316
A-78	A7800__-POC-L-01_C1	ASPN_1135	BR	0.014	0.012	0.002	0.079	0.063
A-78	A7800__-POC-L-01_C1	ASPN_1136	BR	0.009	0.009	0.000	0.012	0.003
A-77	A-77-00-M1_C1	ASPN_1137	BR	0.008	0.008	0.000	0.126	0.068
A-77	A-77-00-M1_C1	ASPN_1138	BR	0.020	0.020	0.000	0.087	0.022
A-77	A-77-00-M1_C1	ASPN_1139	BR	0.011	0.011	0.000	0.023	0.006
A-78	A7800__-POC-L-01_C1	ASPN_1140	BR	0.005	0.004	0.001	0.007	0.001
A-78	A7800__-POC-L-01_C1	ASPN_1141	BR	0.005	0.004	0.001	0.022	0.000
A-78	A7800__-POC-L-01_C1	ASPN_1142	BR	0.004	0.002	0.002	0.005	0.000
A-78	A7800__-POC-L-01_C1	ASPN_1143	BR	0.005	0.005	0.000	0.007	0.003
A-78	A7800__-POC-L-01_C1	ASPN_1144	BR	0.015	0.015	0.000	0.037	0.003
A-78	A7800__-POC-L-01_C1	ASPN_1146	BR	0.006	0.003	0.003	0.017	0.010
A-78	A7800__-POC-L-01_C1	ASPN_1147	BR	0.019	0.019	0.000	0.047	0.005
A-78	A7800__-POC-L-01_C1	ASPN_1148	BR	0.006	0.004	0.002	0.010	0.001
A-78	A7800__-POC-L-01_C1	ASPN_1149	BR	0.032	0.026	0.006	0.074	0.020
A-78	A7800__-POC-L-01_C1	ASPN_1150	BR	0.012	0.010	0.002	0.015	0.004
A-78	A7800__-POC-L-01_C1	ASPN_1152	BR	0.017	0.016	0.001	0.022	0.002
A-78	A7800__-POC-L-01_C1	ASPN_1153	BR	0.004	0.004	0.000	0.007	0.000
A-78	A7800__-POC-L-01_C1	ASPN_1158	BR	0.071	0.071	0.000	0.244	0.103
A-78	A7800__-POC-L-01_C1	ASPN_1159	BR	0.025	0.022	0.003	0.044	0.007
A-78	A7800__-POC-L-01_C1	ASPN_1160	BR	0.008	0.008	0.000	0.014	0.005
A-78	A7800__-POC-L-01_C1	ASPN_1162	BR	0.017	0.009	0.008	0.031	0.000
A-78	A7800__-POC-L-01_C1	ASPN_1163	BR	0.010	0.010	0.000	0.012	0.003
A-78	A7800__-POC-L-01_C1	ASPN_1164	BR	0.007	0.003	0.004	0.279	0.076
A-78	A7800__-POC-L-01_C1	ASPN_1165	BR	0.006	0.006	0.000	0.006	0.001
A-78	A7800__-POC-L-01_C1	ASPN_1166	BR	0.010	0.010	0.000	0.159	0.067
A-78	A7800__-POC-L-01_C1	ASPN_1167	BR	0.007	0.007	0.000	0.008	0.003

ALCOSAN POC	Model Subcatchment	Concept Municipal Project UID	BMP Type	Concept Municipal Project Area (acres)	Public ROW or Parcel		Concept Municipal Project Individual Drainage Area (acres)*	Concept Municipal Project Individual Project Impervious Drainage Area (acres)*
					Area of Municipal Project in Public ROW (acres)	Area of Municipal Project outside of Public ROW (acres)		
A-78	A7800__-POC-L-01_C1	ASPN_1171	BR	0.013	0.007	0.006	0.022	0.000
A-78	A7800__-POC-L-01_C1	ASPN_1172	BR	0.004	0.004	0.000	0.005	0.001
A-78	A7800__-POC-L-01_C1	ASPN_1173	BR	0.009	0.003	0.006	0.010	0.001
A-78	A7800__-POC-L-01_C1	ASPN_1174	BR	0.011	0.002	0.009	0.016	0.000
A-78	A7800__-POC-L-01_C1	ASPN_1181	BR	0.050	0.050	0.000	0.109	0.027
A-78	A7800__-POC-L-01_C1	ASPN_1182	BR	0.039	0.039	0.000	0.155	0.058
A-78	A7800__-POC-L-01_C1	ASPN_1187	BR	0.005	0.005	0.000	0.005	0.000
A-78	A7800__-POC-L-01_C1	ASPN_1190	BR	0.023	0.020	0.003	0.132	0.041
A-78	A7800__-POC-L-01_C1	ASPN_1194	BR	0.013	0.000	0.013	0.073	0.001
A-78	A7800__-POC-L-01_C1	ASPN_1195	BR	0.011	0.008	0.003	0.016	0.001
A-72	A7200__-POC-L-01_C1	SHAR_1196	BR	0.022	0.006	0.016	0.048	0.007
A-72	A7200__-POC-L-01_C1	SHAR_1197	BR	0.011	0.000	0.011	0.083	0.036
A-72	A7200__-POC-L-01_C1	SHAR_1198	BR	0.003	0.001	0.002	0.003	0.000
A-72	A7200__-POC-L-01_C1	SHAR_1199	BR	0.007	0.001	0.006	0.008	0.001
A-78	A7800__-POC-L-01_C1	ASPN_1200	BR	0.009	0.001	0.008	0.010	0.000
A-78	A7800__-POC-L-01_C1	ASPN_1201	BR	0.008	0.007	0.001	0.011	0.004
A-78	A7800__-POC-L-01_C1	ASPN_1202	BR	0.020	0.015	0.005	0.023	0.006
A-75	A-75-00-M1_C1	ASPN_1203	BR	0.009	0.001	0.008	0.084	0.031





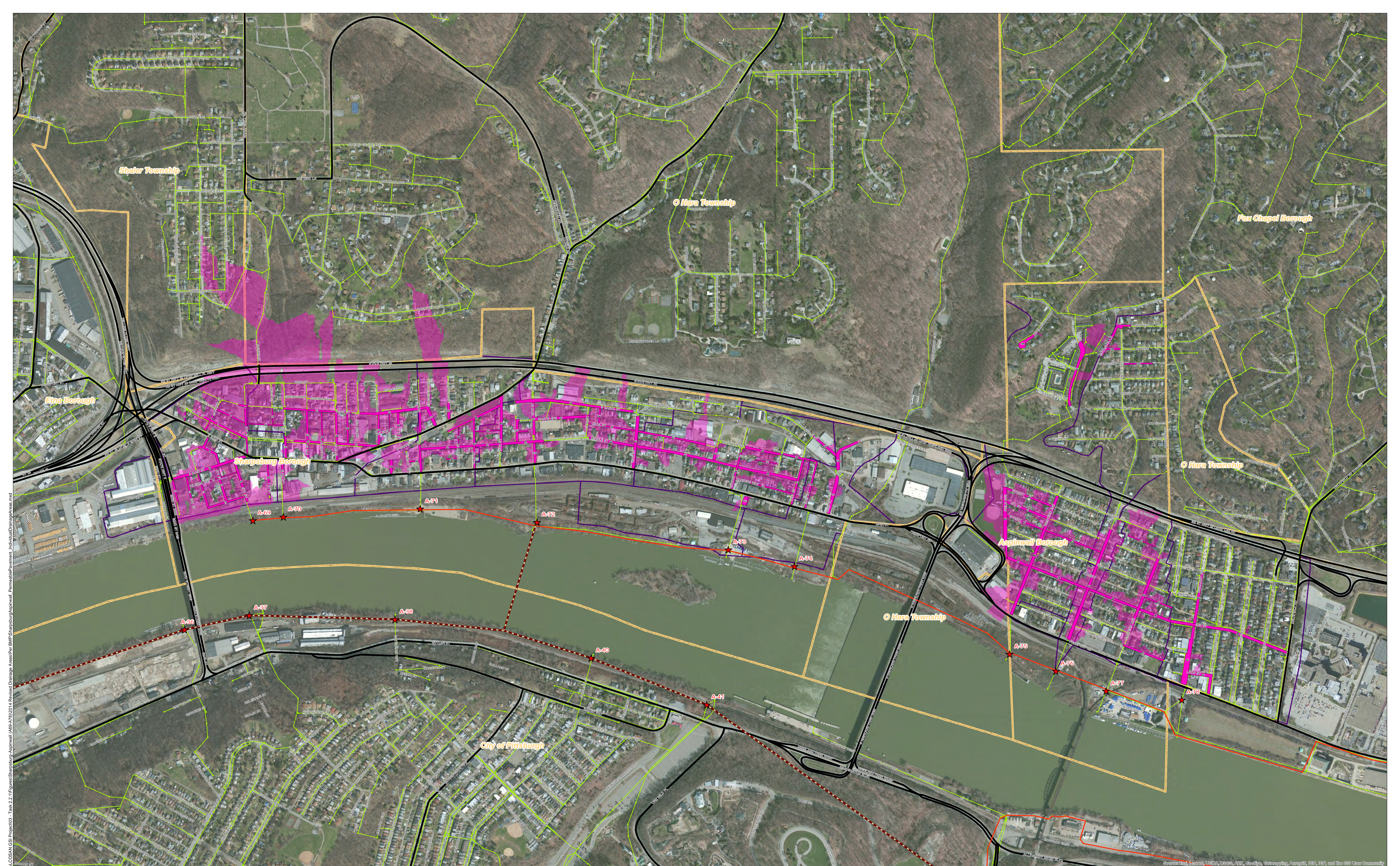
★ ALCOSAN Structures	● One Overall Manholes	<b>Municipal GSI Projects</b>	— State Roads
— ALCOSAN Shallow-Cut Interceptor	— One Overall Sewerlines	■ Bioretention	■ Combined Sewer Subcatchment
— ALCOSAN Deep Tunnel Interceptor		■ Permeable Pavement	■ Municipal Boundaries

0 200 400 600 800 1,200 1,600  
1 inch = 400 Feet

**ALCOSAN GSI Project**  
**A-69 through A-78**  
**Concept Municipal GSI Projects**

Path: N:\PROJECTS\ALCOSAN GSI Project\03 - Task 2.2 - Figures\Sharpsburg\aspinwall\_A69\_A78\_ConceptMunicipalGSI.mxd  
 Source: Esri, Intellicart, IGN, USGS, AIG, GeoEye, Earthstar, AeroGRID, IGN, SRS, and the USGS User Community





★ ALCOSAN Structures	● One Overall Manholes	■ Permeable Pavement Municipal Projects	— State Roads
— ALCOSAN Shallow-Cut Interceptor	— One Overall Sewerlines	■ Permeable Pavement Drainage Area	■ Combined Sewer Subcatchment
— ALCOSAN Deep Tunnel Interceptor		■ Municipal Boundaries	

**ALCOSAN GSI Project**  
 Sharpsburg / Aspinwall (A-69 thru A-78)  
 Concept Municipal Permeable Pavement GSI Projects  
 Individual Project Drainage Areas

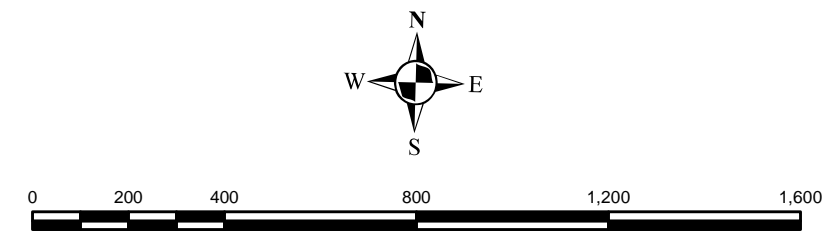
Path: N:\PROJECTS\040340\_05 ALCOSAN GSI Project\03 - Task 2.2 - Ifigures\Sharpsburg\Aspinwall - PermeablePavement\_IndividualDrainageAreas.mxd



Path: N:\PROJECTS\040340\_05 ALCOSAN\_GSI Project\03 - Task 2.2 - Figures\Sharpshurg\Aspinwall - Bioretention - Individual Drainage Areas.mxd



- ★ ALCOSAN Structures
- One Overall Manholes
- Bioretention Municipal Projects
- State Roads
- ALCOSAN Shallow-Cut Interceptor
- One Overall Sewerlines
- Bioretention Drainage Area
- Combined Sewer Subcatchment
- ALCOSAN Deep Tunnel Interceptor
- Municipal Boundaries



**ALCOSAN GSI Project**  
Sharpshurg / Aspinwall (A-69 thru A-78)  
Concept Municipal Bioretention GSI Projects  
Individual Project Drainage Areas

Source: Esri, DeLorme, Garmin, IGN, Intermap, Inc., Swire, GeoEye, AeroGRID, IGN, Esri, and the GIS User Community



**Sharpsburg-Aspinwall Concept Commercial / Institutional Permeable Pavement, Green Roof, and Special Case GSI  
Projects: Summary Table**

December 23, 2013  
Revised October 10, 2014

<b>ALCOSAN POC</b>	<b>Model Subcatchment</b>	<b>Concept Comm / Inst Project UID</b>	<b>BMP Type</b>	<b>Concept Municipal Project Area (acres)</b>	<b>Taxable (acres)</b>	<b>Exempt (acres)</b>	<b>Provisionally Exempt (acres)</b>	<b>Public ROW (acres)</b>
A-69-00	A-69-00-M1_C1	SHAR_6001	CPP	1.419	0.217	0.000	0.000	1.202
A-69-00	A-69-00-M1_C1	SHAR_6002	CPP	0.257	0.000	0.000	0.207	0.050
A-69-00	A-69-00-M1_C1	SHAR_6003	CPP	0.188	0.115	0.000	0.000	0.073
A-69-00	A-69-00-M1_C1	SHAR_6004	CPP	0.354	0.272	0.000	0.000	0.082
A-69-00	A-69-00-M1_C1	SHAR_6005	CPP	0.146	0.146	0.000	0.000	0.000
A-69-00	A-69-00-M1_C1	SHAR_6006	CPP	0.225	0.223	0.000	0.000	0.002
A-69-00	A-69-00-M1_C1	SHAR_6007	CPP	0.103	0.081	0.000	0.000	0.022
A-69-00	A-69-00-M1_C1	SHAR_6008	CPP	0.142	0.107	0.000	0.000	0.035
A-69-00	A-69-00-M1_C1	SHAR_6009	CPP	0.106	0.104	0.000	0.000	0.002
A-69-00	A-69-00-M1_C1	SHAR_6010	CPP	0.067	0.065	0.000	0.000	0.002
A-69-00	A-69-00-M1_C1	SHAR_6011	CPP	0.150	0.146	0.000	0.000	0.004
A-69-00	A-69-00-M1_C1	SHAR_6012	CPP	0.358	0.316	0.000	0.000	0.042
A-69-00	A-69-00-M1_C1	SHAR_6013	CPP	0.102	0.089	0.000	0.000	0.013
A-69-00	A-69-00-M1_C1	SHAR_6014	CPP	0.243	0.000	0.236	0.000	0.007
A-70-00	A-69-00-M1_C1	SHAR_6015	CPP	0.173	0.160	0.000	0.000	0.013
A-70-00	A-70-00-M1_C1	SHAR_6016	CPP	0.120	0.000	0.119	0.000	0.001
A-70-00	A-70-00-M1_C1	SHAR_6017	CPP	0.145	0.115	0.000	0.000	0.030
A-70-00	A-69-00-M1_C1	SHAR_6018	CPP	0.316	0.297	0.000	0.000	0.019
A-70-00	A-69-00-M1_C1	SHAR_6019	CPP	0.195	0.173	0.000	0.000	0.022
A-70-00	A-70-00-M1_C1	SHAR_6020	CPP	0.219	0.211	0.000	0.000	0.008
A-70-00	A-70-00-M1_C1	SHAR_6021	CPP	0.124	0.118	0.000	0.000	0.006
A-70-00	A-70-00-M1_C1	SHAR_6022	CPP	0.270	0.000	0.270	0.000	0.000
A-70-00	A-70-00-M1_C1	SHAR_6023	CPP	0.101	0.100	0.000	0.000	0.001
A-70-00	A-70-00-M1_C1	SHAR_6024	CPP	0.104	0.000	0.104	0.000	0.000
A-70-00	A-70-00-M1_C1	SHAR_6025	CPP	0.079	0.079	0.000	0.000	0.000

<b>ALCOSAN POC</b>	<b>Model Subcatchment</b>	<b>Concept Comm / Inst Project UID</b>	<b>BMP Type</b>	<b>Concept Municipal Project Area (acres)</b>	<b>Taxable (acres)</b>	<b>Exempt (acres)</b>	<b>Provisionally Exempt (acres)</b>	<b>Public ROW (acres)</b>
A-70-00	A-70-00-M1_C1	SHAR_6026	CPP	0.246	0.000	0.244	0.000	0.002
A-70-00	A-70-00-M1_C1	SHAR_6027	CPP	0.092	0.092	0.000	0.000	0.000
A-70-00	A-70-00-M1_C1	SHAR_6028	CPP	0.065	0.065	0.000	0.000	0.000
A-70-00	A-70-00-M1_C1	SHAR_6029	CPP	0.093	0.091	0.000	0.000	0.002
A-71-00	A-71-00-M1_C1	SHAR_6030	CPP	0.098	0.098	0.000	0.000	0.000
A-71-00	A-71-00-M1_C1	SHAR_6031	CPP	0.060	0.060	0.000	0.000	0.000
A-71-00	A-71-00-M1_C1	SHAR_6032	CPP	0.198	0.198	0.000	0.000	0.000
A-71-00	A-71-00-M1_C1	SHAR_6033	CPP	0.091	0.000	0.087	0.000	0.004
A-71-00	A-71-00-M1_C1	SHAR_6034	CPP	0.141	0.135	0.000	0.000	0.006
A-71-00	A-71-00-M1_C1	SHAR_6035	CPP	0.202	0.000	0.000	0.181	0.021
A-71-00	A-71-00-M1_C1	SHAR_6036	CPP	0.223	0.000	0.000	0.223	0.000
A-71-00	A-71-00-M1_C1	SHAR_6037	CPP	0.228	0.209	0.000	0.000	0.019
A-71-00	A-70-00-M1_C1	SHAR_6038	CPP	0.883	0.866	0.000	0.000	0.017
A-71-00	A-71-00-M1_C1	SHAR_6039	CPP	0.058	0.058	0.000	0.000	0.000
A-72-00	A7200__-POC-L-01_C1	SHAR_6040	CPP	0.174	0.174	0.000	0.000	0.000
A-72-00	A7200__-POC-L-01_C1	SHAR_6041	CPP	0.074	0.000	0.000	0.073	0.001
A-72-00	A7200__-POC-L-01_C1	SHAR_6042	CPP	0.063	0.000	0.000	0.061	0.002
A-72-00	A7200__-POC-L-01_C1	SHAR_6043	CPP	0.145	0.000	0.097	0.000	0.048
A-72-00	A7200__-POC-L-01_C1	SHAR_6044	CPP	0.106	0.000	0.000	0.104	0.002
A-72-00	A7200__-POC-L-01_C1	SHAR_6045	CPP	0.103	0.103	0.000	0.000	0.000
A-72-00	A7200__-POC-L-01_C1	SHAR_6046	CPP	0.192	0.192	0.000	0.000	0.000
A-72-00	A7200__-POC-L-01_C1	SHAR_6047	CPP	0.088	0.088	0.000	0.000	0.000
A-72-00	A7200__-POC-L-01_C1	SHAR_6048	CPP	0.371	0.371	0.000	0.000	0.000
A-72-00	A7200__-POC-L-01_C1	SHAR_6049	CPP	0.441	0.000	0.000	0.436	0.005
A-72-00	A7200__-POC-L-01_C1	SHAR_6050	CPP	0.401	0.401	0.000	0.000	0.000
A-72-00	A7200__-POC-L-01_C1	SHAR_6051	CPP	0.159	0.159	0.000	0.000	0.000
A-72-00	A7200__-POC-L-01_C1	SHAR_6052	CPP	0.120	0.120	0.000	0.000	0.000
A-73-00	A-73-00-M1_C1	SHAR_6053	CPP	0.788	0.788	0.000	0.000	0.000
A-73-00	A-73-00-M1_C1	SHAR_6054	CPP	0.072	0.000	0.000	0.072	0.000
A-73-00	A-73-00-M1_C1	SHAR_6055	CPP	0.076	0.000	0.000	0.066	0.010

<b>ALCOSAN POC</b>	<b>Model Subcatchment</b>	<b>Concept Comm / Inst Project UID</b>	<b>BMP Type</b>	<b>Concept Municipal Project Area (acres)</b>	<b>Taxable (acres)</b>	<b>Exempt (acres)</b>	<b>Provisionally Exempt (acres)</b>	<b>Public ROW (acres)</b>
A-73-00	A-73-00-M1_C1	SHAR_6056	CPP	0.056	0.045	0.000	0.000	0.011
A-73-00	INT_A7300_C1	SHAR_6057	CPP	0.323	0.323	0.000	0.000	0.000
A-74-00	INT_A74_C1	SHAR_6058	CPP	0.069	0.069	0.000	0.000	0.000
A-74-00	INT_A74_C1	SHAR_6059	CPP	0.053	0.044	0.000	0.000	0.009
A-74-00	INT_A74_C1	SHAR_6060	CPP	0.837	0.833	0.000	0.000	0.004
A-74-00	INT_A74_C1	SHAR_6061	CPP	0.212	0.163	0.000	0.000	0.049
A-74-00	INT_A74_C1	SHAR_6062	CPP	0.120	0.119	0.000	0.000	0.001
A-74-00	INT_A74_C1	SHAR_6063	CPP	0.450	0.000	0.000	0.301	0.149
A-74-00	INT_A74_C1	SHAR_6064	CPP	0.187	0.187	0.000	0.000	0.000
A-74-00	INT_A74_C1	SHAR_6065	CPP	0.256	0.256	0.000	0.000	0.000
A-74-00	INT_A74_C1	SHAR_6066	CPP	0.134	0.000	0.134	0.000	0.000
A-74A-00	A74A00_-POC-L-01_C1	SHAR_6067	CPP	0.216	0.216	0.000	0.000	0.000
A-74A-00	A74A00_-POC-L-01_C1	SHAR_6068	CPP	0.628	0.628	0.000	0.000	0.000
A-74A-00	A74A00_-POC-L-01_C1	SHAR_6069	CPP	6.037	6.001	0.000	0.000	0.036
A-75-00	A-75-00-M1_C1	SHAR_6070	CPP	1.918	1.763	0.000	0.000	0.155
A-75-00	A-75-00-M1_C1	ASPN_6071	CPP	0.065	0.065	0.000	0.000	0.000
A-75-00	A-75-00-M1_C1	ASPN_6072	CPP	0.212	0.000	0.212	0.000	0.000
A-75-00	A-75-00-M1_C1	ASPN_6073	CPP	0.964	0.964	0.000	0.000	0.000
A-75-00	A-75-00-M1_C1	ASPN_6074	CPP	0.218	0.218	0.000	0.000	0.000
A-77-00	A-77-00-M1_C1	ASPN_6075	CPP	0.493	0.000	0.449	0.000	0.044
A-77-00	A-77-00-M1_C1	ASPN_6076	CPP	0.165	0.158	0.000	0.000	0.007
A-77-00	A-77-00-M1_C1	ASPN_6077	CPP	0.242	0.221	0.000	0.000	0.021
A-77-00	A-77-00-M1_C1	ASPN_6078	CPP	0.249	0.243	0.000	0.000	0.006
A-78-00	A7800_-POC-L-01_C1	ASPN_6079	CPP	0.159	0.159	0.000	0.000	0.000
A-78-00	A7800_-POC-L-01_C1	ASPN_6080	CPP	0.070	0.032	0.000	0.000	0.038
A-78-00	A7800_-POC-L-01_C1	ASPN_6081	CPP	0.050	0.043	0.000	0.000	0.007
A-78-00	A7800_-POC-L-01_C1	ASPN_6082	CPP	0.119	0.114	0.000	0.000	0.005
A-78-00	A7800_-POC-L-01_C1	ASPN_6083	CPP	0.095	0.084	0.000	0.000	0.011
A-78-00	A7800_-POC-L-01_C1	ASPN_6084	CPP	0.057	0.054	0.000	0.000	0.003
A-78-00	A7800_-POC-L-01_C1	ASPN_6085	CPP	0.125	0.105	0.000	0.000	0.020

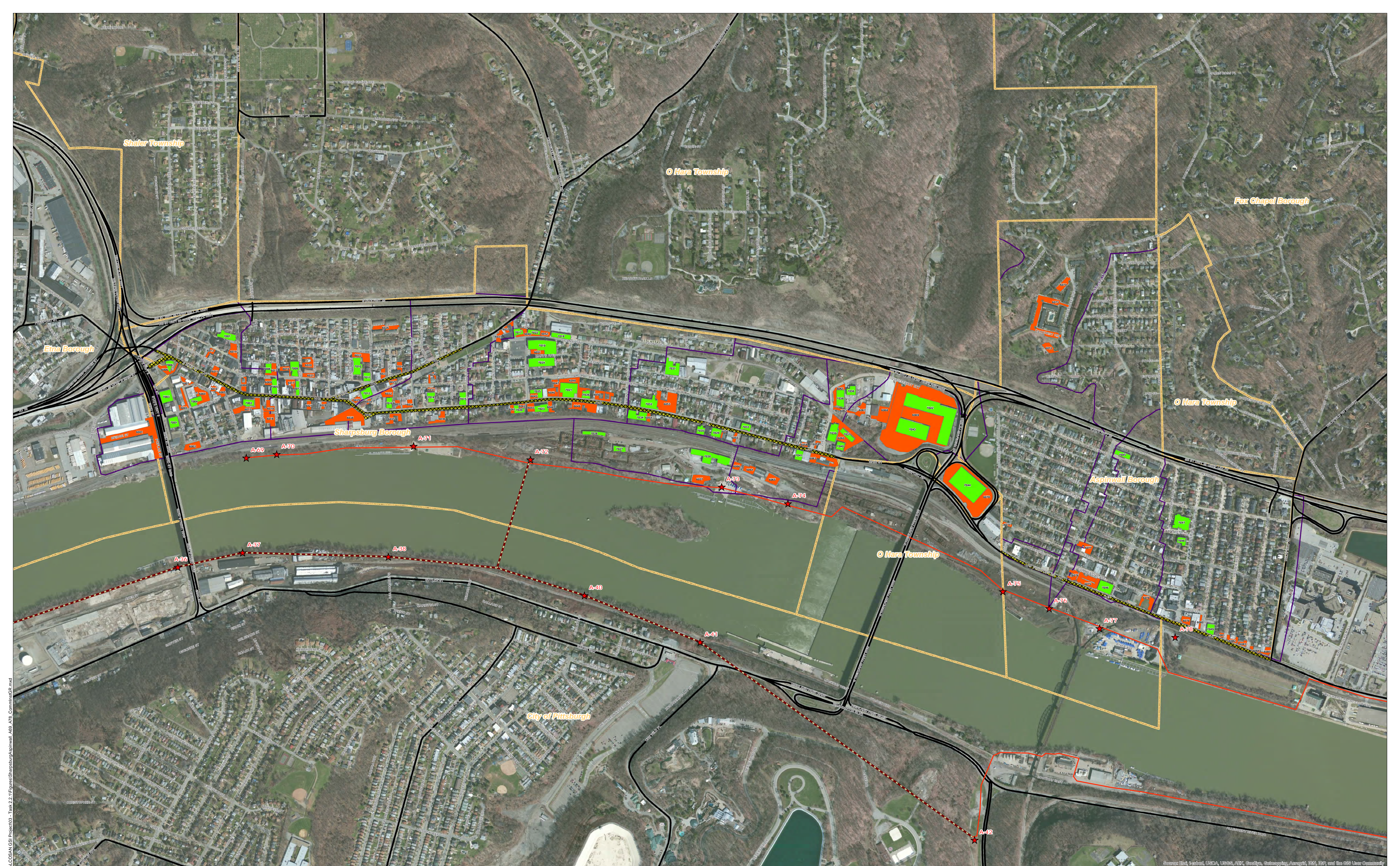


ALCOSAN POC	Model Subcatchment	Concept Comm / Inst Project UID	BMP Type	Concept Municipal Project Area (acres)	Taxable (acres)	Exempt (acres)	Provisionally Exempt (acres)	Public ROW (acres)
A-69-00	A-69-00-M1_C1	SHAR_7001	GR	0.233	0.233	0.000	0.000	0.000
A-69-00	A-69-00-M1_C1	SHAR_7002	GR	0.169	0.169	0.000	0.000	0.000
A-69-00	A-69-00-M1_C1	SHAR_7003	GR	0.322	0.322	0.000	0.000	0.000
A-69-00	A-69-00-M1_C1	SHAR_7004	GR	0.182	0.182	0.000	0.000	0.000
A-69-00	A-69-00-M1_C1	SHAR_7005	GR	0.185	0.176	0.000	0.000	0.009
A-69-00	A-69-00-M1_C1	SHAR_7006	GR	0.134	0.000	0.000	0.000	0.134
A-69-00	A-69-00-M1_C1	SHAR_7007	GR	0.264	0.257	0.000	0.000	0.007
A-70-00	A-69-00-M1_C1	SHAR_7008	GR	0.134	0.134	0.000	0.000	0.000
A-70-00	A-70-00-M1_C1	SHAR_7009	GR	0.274	0.270	0.000	0.000	0.004
A-70-00	A-70-00-M1_C1	SHAR_7010	GR	0.307	0.000	0.307	0.000	0.000
A-70-00	A-70-00-M1_C1	SHAR_7011	GR	0.141	0.000	0.138	0.000	0.003
A-70-00	A-70-00-M1_C1	SHAR_7012	GR	0.214	0.214	0.000	0.000	0.000
A-70-00	A-70-00-M1_C1	SHAR_7013	GR	0.117	0.116	0.000	0.000	0.001
A-71-00	A-71-00-M1_C1	SHAR_7014	GR	0.156	0.156	0.000	0.000	0.000
A-71-00	A-71-00-M1_C1	SHAR_7015	GR	0.187	0.000	0.000	0.187	0.000
A-71-00	A-71-00-M1_C1	SHAR_7016	GR	0.141	0.141	0.000	0.000	0.000
A-72-00	A7200__ -POC-L-01_C1	SHAR_7017	GR	0.131	0.131	0.000	0.000	0.000
A-72-00	A7200__ -POC-L-01_C1	SHAR_7018	GR	0.207	0.207	0.000	0.000	0.000
A-72-00	A7200__ -POC-L-01_C1	SHAR_7019	GR	0.751	0.751	0.000	0.000	0.000
A-72-00	A7200__ -POC-L-01_C1	SHAR_7020	GR	0.139	0.000	0.000	0.139	0.000
A-72-00	A7200__ -POC-L-01_C1	SHAR_7021	GR	0.526	0.526	0.000	0.000	0.000
A-72-00	A7200__ -POC-L-01_C1	SHAR_7022	GR	0.120	0.120	0.000	0.000	0.000
A-72-00	A7200__ -POC-L-01_C1	SHAR_7023	GR	0.222	0.000	0.000	0.222	0.000
A-72-00	A7200__ -POC-L-01_C1	SHAR_7024	GR	0.522	0.522	0.000	0.000	0.000
A-72-00	A7200__ -POC-L-01_C1	SHAR_7025	GR	0.163	0.163	0.000	0.000	0.000
A-72-00	A7200__ -POC-L-01_C1	SHAR_7026	GR	0.132	0.132	0.000	0.000	0.000
A-73-00	INT_A7300_C1	SHAR_7027	GR	0.136	0.136	0.000	0.000	0.000
A-73-00	INT_A7300_C1	SHAR_7028	GR	0.182	0.182	0.000	0.000	0.000
A-73-00	A-73-00-M1_C1	SHAR_7029	GR	0.189	0.184	0.000	0.000	0.005
A-73-00	INT_A7300_C1	SHAR_7030	GR	0.733	0.733	0.000	0.000	0.000

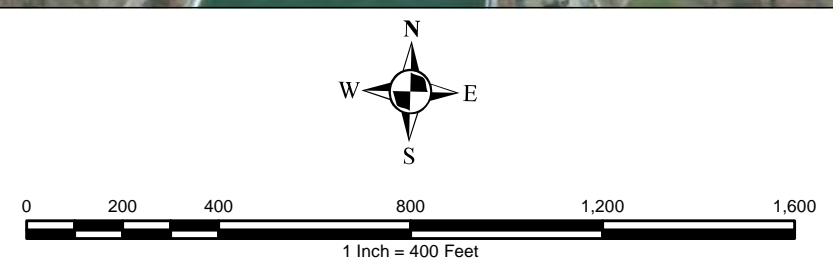
ALCOSAN POC	Model Subcatchment	Concept Comm / Inst Project UID	BMP Type	Concept Municipal Project Area (acres)	Taxable (acres)	Exempt (acres)	Provisionally Exempt (acres)	Public ROW (acres)
A-73-00	A-73-00-M1_C1	SHAR_7031	GR	0.430	0.429	0.000	0.000	0.001
A-73-00	A-73-00-M1_C1	SHAR_7032	GR	0.390	0.390	0.000	0.000	0.000
A-73-00	A-73-00-M1_C1	SHAR_7033	GR	0.148	0.148	0.000	0.000	0.000
A-73-00	A-73-00-M1_C1	SHAR_7034	GR	0.348	0.000	0.000	0.348	0.000
A-73-00	A-73-00-M1_C1	SHAR_7035	GR	0.146	0.146	0.000	0.000	0.000
A-74-00	INT_A74_C1	SHAR_7036	GR	0.176	0.176	0.000	0.000	0.000
A-74-00	INT_A74_C1	SHAR_7037	GR	0.173	0.173	0.000	0.000	0.000
A-74-00	INT_A74_C1	SHAR_7038	GR	0.304	0.304	0.000	0.000	0.000
A-74-00	INT_A74_C1	SHAR_7039	GR	0.344	0.344	0.000	0.000	0.000
A-74-00	INT_A74_C1	SHAR_7040	GR	0.145	0.145	0.000	0.000	0.000
A-74-00	INT_A74_C1	SHAR_7041	GR	0.167	0.000	0.000	0.167	0.000
A-74A-00	A74A00_-POC-L-01_C1	SHAR_7042	GR	2.211	2.211	0.000	0.000	0.000
A-74A-00	A74A00_-POC-L-01_C1	SHAR_7043	GR	1.102	1.102	0.000	0.000	0.000
A-75-00	A-75-00-M1_C1	SHAR_7044	GR	1.591	1.591	0.000	0.000	0.000
A-77-00	A-77-00-M1_C1	ASPN_7045	GR	0.168	0.168	0.000	0.000	0.000
A-77-00	A-77-00-M1_C1	ASPN_7046	GR	0.350	0.284	0.000	0.000	0.066
A-78-00	A7800_-POC-L-01_C1	ASPN_7047	GR	0.489	0.489	0.000	0.000	0.000
A-78-00	A7800_-POC-L-01_C1	ASPN_7048	GR	0.137	0.000	0.137	0.000	0.000
A-78-00	A7800_-POC-L-01_C1	ASPN_7049	GR	0.170	0.170	0.000	0.000	0.000
A-69-00	A-69-00-M1_C1	SHAR_8001	SRPP	1.126	0.000	0.000	0.000	1.126
A-70-00	A-70-00-M1_C1	SHAR_8002	SRPP	0.540	0.002	0.002	0.000	0.536
A-71-00	A-71-00-M1_C1	SHAR_8004	SRPP	0.359	0.003	0.000	0.000	0.356
A-70-00	A-70-00-M1_C1	SHAR_8005	SRPP	0.510	0.000	0.000	0.000	0.510
A-71-00	A-71-00-M1_C1	SHAR_8007	SRPP	0.875	0.051	0.000	0.000	0.824
A-74-00	INT_A74_C1	SHAR_8008	SRPP	0.413	0.000	0.000	0.000	0.413
A-73-00	A-73-00-M1_C1	SHAR_8012	SRPP	1.171	0.006	0.000	0.000	1.165
A-75-00	A-75-00-M1_C2	ASPN_8013	SRPP	0.354	0.000	0.000	0.000	0.354
A-76-00	A-76-00-M1_C2	ASPN_8014	SRPP	0.122	0.000	0.000	0.000	0.122
A-77-00	A-77-00-M1_C1	ASPN_8015	SRPP	0.624	0.003	0.001	0.000	0.620
A-72-00	A7200_-POC-L-01_C1	SHAR_8016	SRPP	1.057	0.002	0.000	0.000	1.055

<b>ALCOSAN POC</b>	<b>Model Subcatchment</b>	<b>Concept Comm / Inst Project UID</b>	<b>BMP Type</b>	<b>Concept Municipal Project Area (acres)</b>	<b>Taxable (acres)</b>	<b>Exempt (acres)</b>	<b>Provisionally Exempt (acres)</b>	<b>Public ROW (acres)</b>
A-78-00	A7800__-POC-L-01_C1	ASPN_8017	SRPP	0.949	0.000	0.000	0.000	0.949





- ★ ALCOSAN Structures
- ALCOSAN Shallow-Cut Interceptor
- - - ALCOSAN Deep Tunnel Interceptor
- ▨ Special Case
- Concept Commercial / Institutional Permeable Pavement Projects
- Concept Green Roof Projects
- State Roads
- Combined Sewer Subcatchment
- Municipal Boundaries



Source: Esri, Imagery, AEC, USGS, AEC, Imagery, Outdoors, Aerials, 1985, 1987, and the GIS User Community

**ALCOSAN GSI Project**  
**A-69 through A-78**  
**Concept Commercial / Institutional**  
**and Green Roofs GSI Projects**

Path: N:\PROJECTS\ALCOSAN GSI Project\03 - Task 2.2 - Figures\Sharpsburg\aspinwall\_A69\_A78\_CommInstGR.mxd