

5.6 Study Area 6 – Central Southside

These findings apply to ALCOSAN Points of Connection M-15 through M-18, M-19 through M-19B, and M-20 through M-22, which include combined sewer systems in the City of Pittsburgh.

Central Southside - BMP GIS Features

The SUSTAIN BMP siting tool analysis resulted in identification of a total of 6,388 BMP GIS Features covering 516 acres, which consisted of the following:

Table 5.6-1 - TOTAL SUSTAIN BMP Features Output

SUSTAIN BMP Feature Type	Number of Features	Area of BMP Features (Acres)
Permeable Pavement	2,008	149
Bioretention	1,497	127
Infiltration Basin/Trenches	605	96
Vegetated Filter Strips	790	81
Grass Swales	1,444	63
Constructed Wetlands	44	1

Locations of all identified BMP GIS features are presented on the SUSTAIN BMP Features Figure.

Central Southside - Concept Municipal GSI Projects

Based on the BMP features, 344 concept Municipal GSI Projects were identified covering 51 total acres with a corresponding drainage area delineation of 896 total acres and consisted of the following:

Table 5.6-2 - Summary of Identified Concept Municipal GSI Projects

Concept GSI Technology	Number of Projects	GSI Project Area (Acres)	Project Drainage Area (Acres)
Permeable Pavement	122	42	547
Bioretention	193	7	277
Infiltration Basin/Trenches	26	2	34
Vegetated Filter Strips	3	< 1	38
Grass Swales	0	0	0
Constructed Wetlands	0	0	0

Project statistics including ALCOSAN POC, model subcatchment, BMP type, project area, area of project inside and outside of the public right-of-way, tributary drainage area, and tributary impervious drainage area are provided in the Concept Municipal Projects Table. Locations of all identified Concept Municipal GSI projects are presented in the Concept Municipal GSI Projects Figure (1) and the corresponding delineated tributary drainage areas are presented by BMP in the Individual Project Drainage Area Figures (4).

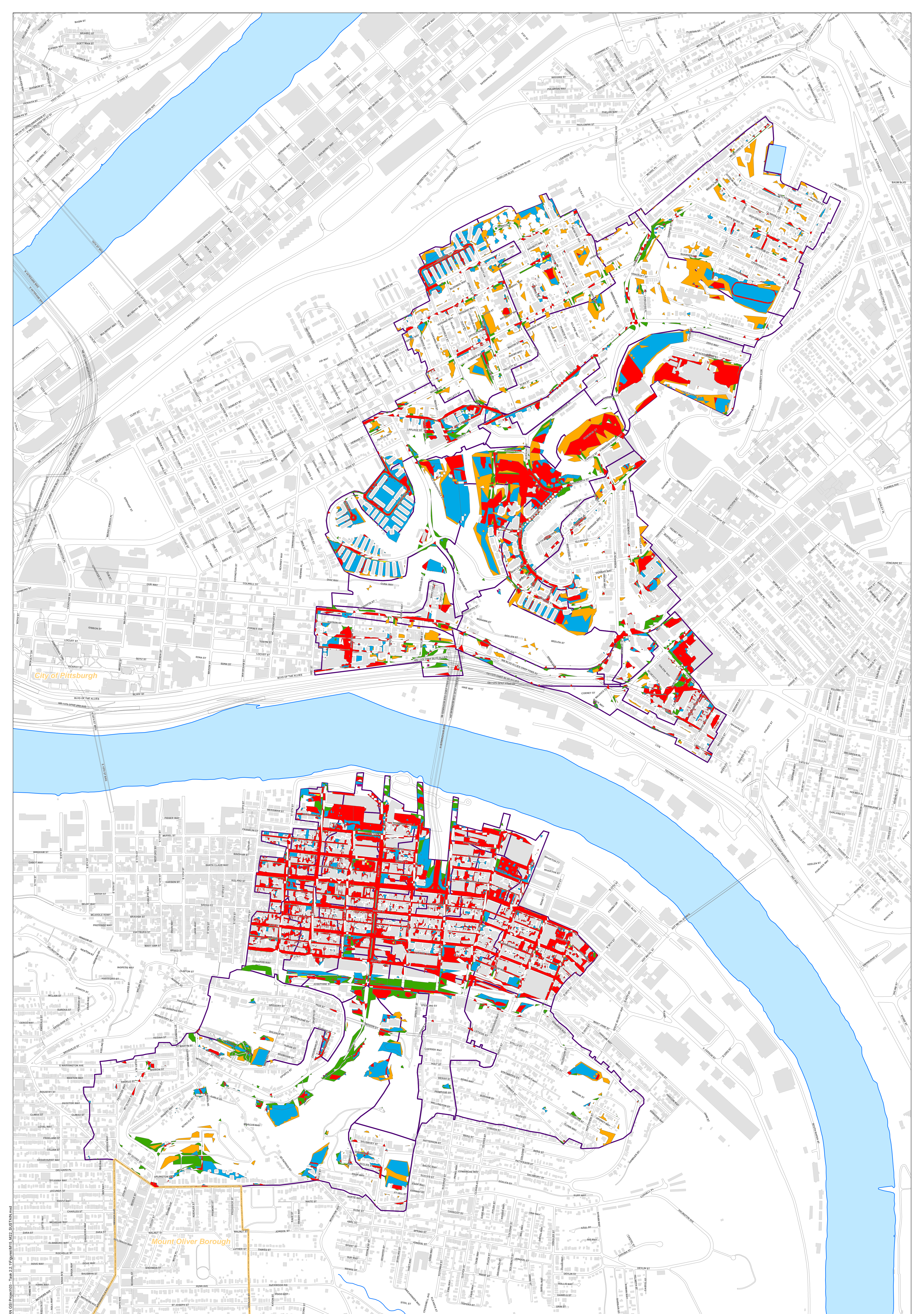
Central Southside - Concept Commercial/Institutional and Special Case GSI Projects

Based on the BMP features, 249 concept Commercial/Institutional and Special Case GSI Projects were identified covering 87 total acres and consisted of the following:

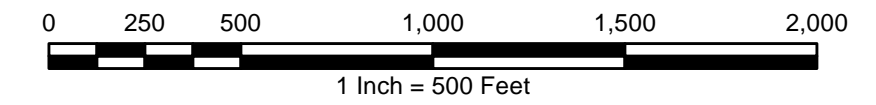
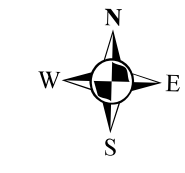
Table 5.6-3 - Summary of Identified Concept Commercial/Institutional and Special Case GSI Projects

Concept GSI Technology or Special Case Project Category	Number of Projects	GSI Project Area (Acres)
Commercial/Institutional Permeable Pavement	116	30
Commercial/Institutional Green Roofs	95	35
State Route Permeable Pavement	38	22
Busway Permeable Pavement	0	0
Busway Bioretention	0	0

Project statistics including ALCOSAN POC, model subcatchment, BMP type, project area, area of project taxable, exempt, provisionally exempt and in the public right-of-way are provided in Concept Commercial / Institutional GSI Projects Table. Locations of all identified Concept Commercial / Institutional GSI projects are presented in the Concept Commercial / Institutional GSI Projects Figure (1).



- Permeable Pavement
- Vegetated Filter Strips
- Combined Sewer Subcatchment
- Bioretention
- Grass Swales
- Municipal Boundaries
- Infiltration Basin / Trench
- Constructed Wetlands



ALCOSAN GSI Project
M-15 through M-22
SUSTAIN BMP Features

Central Southside Concept Municipal Projects: Individual Drainage Areas

March 31, 2014

Revised October 7, 2014

*Note: The drainage area presented in this table is representative of the individual drainage area tributary to each concept municipal project without any revisions to account for overlap, without engineering judgment revisions applied, and without the drainage areas being clipped to their corresponding model subcatchments.

ALCOSAN POC	Model Subcatchment	Concept Municipal Project UID	BMP Type	Concept Municipal Project Area (acres)	Public ROW or Parcel		Concept Municipal Project Individual Drainage Area (acres)*	Concept Municipal Project Individual Project Impervious Drainage Area (acres)*
					Area of Municipal Project in Public ROW (acres)	Area of Municipal Project outside of Public ROW (acres)		
M-15	M-15-C-1	CSS__1	PP	0.502	0.000	0.502	1.568	1.094
M-15	M-15-C-1	CSS__2	PP	0.109	0.000	0.109	1.282	0.628
M-15	M-15-C-1	CSS__3	PP	0.078	0.004	0.074	1.556	0.814
M-15	M-15-C-1	CSS__4	PP	0.503	0.014	0.489	3.191	2.276
M-15Z	M-14A-C-1	CSS__5	PP	0.134	0.000	0.134	0.558	0.319
M-15Z	M-14A-C-1	CSS__6	PP	0.308	0.000	0.308	0.873	0.549
M-15Z	M-14A-C-1	CSS__7	PP	0.149	0.007	0.142	0.921	0.514
M-15Z	M-14A-C-1	CSS__8	PP	0.130	0.000	0.130	1.256	0.857
M-15Z	M-14A-C-1	CSS__9	PP	0.108	0.000	0.108	1.841	1.288
M-15Z	M-14A-C-1	CSS__10	PP	0.431	0.000	0.431	3.190	2.190
M-16	M-16-C-6	CSS__11	PP	0.302	0.000	0.302	2.258	1.461
M-16	M-16-C-6	CSS__12	PP	0.199	0.003	0.196	0.823	0.574
M-16	M-16-C-6	CSS__13	PP	0.316	0.000	0.316	2.744	1.571
M-16	M-16-C-6	CSS__14	PP	0.144	0.000	0.144	1.076	0.523
M-16	M-16-C-6	CSS__15	PP	0.073	0.000	0.073	1.673	0.921
M-16	M-16-C-6	CSS__16	PP	0.196	0.000	0.196	2.423	1.285
M-16	M-16-C-1	CSS__17	PP	0.116	0.013	0.103	0.919	0.426
M-16	M-16-C-1	CSS__18	PP	0.170	0.011	0.159	1.098	0.977
M-16	M-16-C-2-B	CSS__19	PP	0.457	0.113	0.344	12.547	5.929
M-16	M-16-C-2-A	CSS__20	PP	0.151	0.000	0.151	10.154	4.764
M-16	M-16-C-2-A	CSS__21	PP	0.307	0.000	0.307	2.183	1.576
M-16	M-16-C-1	CSS__22	PP	0.128	0.040	0.088	1.098	0.773
M-16	M-16-C-1	CSS__23	PP	0.143	0.025	0.118	1.361	0.816
M-16	M-16-C-5	CSS__24	PP	0.120	0.000	0.120	1.143	0.598
M-16	M-16-C-5	CSS__25	PP	0.489	0.000	0.489	3.725	1.734
M-16	M-16-C-5	CSS__26	PP	0.436	0.000	0.436	7.569	4.160
M-16	M-16-C-8	CSS__27	PP	0.452	0.160	0.292	0.978	0.603
M-16	M-16-C-4-B	CSS__28	PP	0.061	0.000	0.061	0.127	0.105
M-16	M-16-C-1	CSS__29	PP	0.272	0.148	0.124	0.378	0.345
M-16	M-16-C-7	CSS__30	PP	0.180	0.008	0.172	0.382	0.216
M-16	M-16-C-5	CSS__31	PP	0.416	0.001	0.415	5.121	2.551
M-16	M-16-C-5	CSS__32	PP	0.282	0.000	0.282	7.492	3.971

ALCOSAN POC	Model Subcatchment	Concept Municipal Project UID	BMP Type	Concept Municipal Project Area (acres)	Public ROW or Parcel		Concept Municipal Project Individual Drainage Area (acres)*	Concept Municipal Project Individual Project Impervious Drainage Area (acres)*
					Area of Municipal Project in Public ROW (acres)	Area of Municipal Project outside of Public ROW (acres)		
M-16	M-16-C-2-A	CSS_33	PP	0.287	0.000	0.287	4.426	3.008
M-16	M-16-C-2-A	CSS_34	PP	0.778	0.330	0.448	9.167	3.980
M-16	M-16-C-1	CSS_35	PP	0.388	0.000	0.388	4.480	2.957
M-16	M-16-C-1	CSS_36	PP	1.083	0.000	1.083	3.047	2.185
M-17	M-17-C-1	CSS_37	PP	0.134	0.019	0.115	0.734	0.392
M-17	M-17-C-1	CSS_38	PP	0.321	0.000	0.321	1.684	1.242
M-17	M-17-C-1	CSS_39	PP	0.404	0.145	0.259	3.268	2.238
M-17	M-17-C-1	CSS_40	PP	0.310	0.017	0.293	1.871	1.325
M-18	M-18-C-1	CSS_41	PP	0.067	0.001	0.066	1.217	0.624
M-18	M-18-C-1	CSS_42	PP	0.055	0.010	0.045	0.371	0.327
M-18	M-18-C-1	CSS_43	PP	0.266	0.000	0.266	1.349	0.884
M-18	M-18-C-1	CSS_44	PP	0.424	0.000	0.424	28.458	12.068
M-20	M-20-C-1	CSS_45	PP	0.101	0.000	0.101	0.936	0.549
M-20	M-20-C-1	CSS_46	PP	0.403	0.000	0.403	3.535	2.000
M-20	M-20-C-1	CSS_47	PP	0.232	0.000	0.232	1.220	0.751
M-21	M-21-C-1-A	CSS_48	PP	0.066	0.000	0.066	1.449	1.033
M-21	M-21-C-1-A	CSS_49	PP	0.185	0.000	0.185	1.561	1.149
M-21	M-21-C-1-A	CSS_50	PP	0.087	0.000	0.087	0.469	0.415
M-21	M-21-C-1-A	CSS_51	PP	0.165	0.000	0.165	1.137	0.562
M-21	M-21-C-1-A	CSS_52	PP	1.235	0.000	1.235	32.892	15.355
M-21	M-16-C-2-B	CSS_53	PP	0.068	0.068	0.000	4.104	2.279
M-21	M-21-C-1-B	CSS_54	PP	0.195	0.003	0.192	17.871	5.507
M-21	M-21-C-1-A	CSS_55	PP	0.107	0.000	0.107	0.860	0.551
M-21	M-21-C-1-B	CSS_56	PP	0.112	0.000	0.112	14.719	3.897
M-21	M-21-C-1-A	CSS_57	PP	0.174	0.000	0.174	5.559	3.605
M-21	M-21-C-1-A	CSS_58	PP	0.121	0.000	0.121	1.030	0.558
M-21	M-21-C-1-A	CSS_59	PP	0.155	0.000	0.155	1.040	0.737
M-21	M-21-C-2	CSS_60	PP	0.185	0.000	0.185	0.749	0.428
M-21	M-21-C-1-A	CSS_61	PP	1.023	0.000	1.023	5.617	4.204
M-21	M-21-C-1-A	CSS_62	PP	0.279	0.001	0.278	2.881	1.435
M-21	M-21-C-1-A	CSS_63	PP	0.458	0.000	0.458	25.251	10.138
M-21	M-21-C-1-A	CSS_64	PP	0.597	0.007	0.590	6.466	4.163
M-21	M-21-C-1-A	CSS_65	PP	0.617	0.000	0.617	3.601	2.366
M-22	M-22-C-1-A	CSS_66	PP	0.154	0.000	0.154	0.823	0.524
M-22	M-22-C-1-A	CSS_67	PP	0.710	0.000	0.710	2.887	2.452
M-22	M-22-C-1-A	CSS_68	PP	0.227	0.000	0.227	1.610	1.099
M-22	M-22-C-1-A	CSS_69	PP	0.417	0.010	0.407	1.045	0.685
M-22	M-22-C-1-A	CSS_70	PP	0.254	0.000	0.254	1.349	0.909

ALCOSAN POC	Model Subcatchment	Concept Municipal Project UID	BMP Type	Concept Municipal Project Area (acres)	Public ROW or Parcel		Concept Municipal Project Individual Drainage Area (acres)*	Concept Municipal Project Individual Project Impervious Drainage Area (acres)*
					Area of Municipal Project in Public ROW (acres)	Area of Municipal Project outside of Public ROW (acres)		
M-22	M-22-C-1-A	CSS_71	PP	0.264	0.000	0.264	1.084	0.645
M-22	M-22-C-1-A	CSS_72	PP	0.574	0.000	0.574	5.156	2.638
M-22	M-22-C-1-A	CSS_73	PP	0.269	0.000	0.269	3.030	1.845
M-22	M-22-C-1-A	CSS_74	PP	0.299	0.000	0.299	1.228	0.778
M-22	M-22-C-1-A	CSS_75	PP	0.123	0.000	0.123	1.221	0.726
M-22	M-22-C-1-A	CSS_76	PP	0.315	0.000	0.315	1.032	0.946
M-19-00	M-19-C-5-B	CSS_77	PP	0.210	0.000	0.210	0.768	0.335
M-19-00	M-19-C-5-B	CSS_78	PP	0.525	0.000	0.525	4.873	1.762
M-19-00	M-19-C-3-A	CSS_81	PP	0.329	0.005	0.324	3.353	0.877
M-19-02	M-19-C-1-C	CSS_82	PP	0.682	0.000	0.682	3.473	1.989
M-19-00	M-19-C-6	CSS_85	PP	1.367	0.019	1.348	10.001	5.052
M-19B-00	M-19B-C-2	CSS_86	PP	0.645	0.016	0.629	1.970	1.235
M-19-00	M-19-C-6	CSS_87	PP	1.208	0.061	1.147	6.397	2.995
M-19-00	M-19-C-4	CSS_90	PP	0.247	0.008	0.239	1.504	0.704
M-19-00	M-19-C-6	CSS_95	PP	0.711	0.002	0.709	12.427	5.169
M-19-00	M-19-C-10	CSS_96	PP	0.092	0.017	0.075	10.464	3.638
M-19B-00	M-19B-C-2	CSS_102	PP	0.201	0.000	0.201	0.481	0.204
M-19-00	M-19-C-1-B	CSS_103	PP	0.735	0.000	0.735	3.384	2.156
M-19B-00	M-19B-C-1	CSS_108	PP	0.597	0.000	0.597	5.218	3.057
M-19B-00	M-19B-C-1	CSS_109	PP	0.158	0.000	0.158	1.876	0.686
M-19B-00	M-19B-C-1	CSS_114	PP	0.122	0.000	0.122	0.830	0.414
M-19-00	M-19-C-1-B	CSS_118	PP	0.121	0.000	0.121	0.393	0.314
M-19-00	M-19-C-1-B	CSS_119	PP	0.148	0.000	0.148	0.484	0.418
M-19-00	M-19-C-4	CSS_120	PP	0.434	0.434	0.000	1.265	0.180
M-19-00	M-19-C-9	CSS_121	PP	0.097	0.000	0.097	1.694	0.813
M-19-00	M-19-C-8-A	CSS_122	PP	0.778	0.778	0.000	2.262	0.377
M-19-00	M-19-C-9	CSS_123	PP	0.766	0.000	0.766	3.585	1.314
M-19-00	M-19-C-9	CSS_124	PP	1.211	0.000	1.211	11.443	4.143
M-19-00	M-19-C-9	CSS_125	PP	1.000	0.000	1.000	18.444	5.633
M-19-00	M-19-C-9	CSS_126	PP	0.225	0.109	0.116	1.115	0.261
M-19-00	M-19-C-8-E	CSS_127	PP	0.605	0.000	0.605	11.834	4.686
M-19-00	M-19-C-8-E	CSS_128	PP	0.246	0.000	0.246	5.850	2.158
M-19-00	M-19-C-8-E	CSS_129	PP	0.317	0.008	0.309	5.716	1.471
M-19-00	M-19-C-8-E	CSS_130	PP	0.548	0.000	0.548	8.065	3.360
M-19-00	M-19-C-8-D	CSS_131	PP	0.099	0.000	0.099	16.661	6.190
M-19-00	M-19-C-8-D	CSS_132	PP	0.105	0.000	0.105	0.423	0.172
M-19-00	M-19-C-8-D	CSS_133	PP	0.108	0.000	0.108	0.502	0.206
M-19-00	M-19-C-8-D	CSS_134	PP	0.108	0.000	0.108	1.264	0.491

ALCOSAN POC	Model Subcatchment	Concept Municipal Project UID	BMP Type	Concept Municipal Project Area (acres)	Public ROW or Parcel		Concept Municipal Project Individual Drainage Area (acres)*	Concept Municipal Project Individual Project Impervious Drainage Area (acres)*
					Area of Municipal Project in Public ROW (acres)	Area of Municipal Project outside of Public ROW (acres)		
M-19-00	M-19-C-8-D	CSS_135	PP	0.696	0.000	0.696	13.362	4.743
M-19-00	M-19-C-8-D	CSS_136	PP	0.256	0.000	0.256	3.888	1.421
M-19-00	M-19-C-8-D	CSS_137	PP	0.621	0.000	0.615	4.212	1.635
M-19-00	M-19-C-8-D	CSS_138	PP	0.391	0.000	0.391	2.301	0.569
M-19-00	M-19-C-8-D	CSS_139	PP	0.217	0.000	0.217	0.620	0.194
M-19-00	M-19-C-8-C	CSS_140	PP	0.189	0.000	0.189	22.233	4.972
M-19-00	M-19-C-10	CSS_141	PP	0.283	0.000	0.283	29.467	6.955
M-19-00	M-19-C-10	CSS_142	PP	0.333	0.000	0.333	3.712	1.268
M-19-00	M-19-C-8-F	CSS_143	PP	0.172	0.000	0.172	0.531	0.408
M-19-00	M-19-C-8-F	CSS_144	PP	0.192	0.047	0.144	0.629	0.380
M-19-00	M-19-C-8-F	CSS_145	PP	0.089	0.015	0.074	1.388	0.945
M-19B-00	M-19B-C-2	CSS_146	PP	0.208	0.000	0.208	0.889	0.585
M-19-00	M-19-C-10	CSS_147	PP	0.200	0.000	0.200	2.178	0.855
M-19-00	M-19-C-5-A	CSS_148	PP	0.831	0.000	0.831	6.570	2.031
M-15	M-15-C-1	CSS_1001	BR	0.018	0.011	0.007	0.039	0.002
M-15	M-15-C-1	CSS_1002	BR	0.010	0.000	0.010	0.070	0.068
M-15	M-15-C-1	CSS_1003	BR	0.030	0.000	0.030	0.149	0.073
M-15Z	M-14A-C-1	CSS_1004	BR	0.014	0.005	0.009	0.071	0.033
M-16	M-16-C-3	CSS_1005	BR	0.050	0.050	0.000	12.517	2.567
M-16	M-16-C-3	CSS_1006	BR	0.009	0.000	0.009	0.038	0.057
M-16	M-16-C-2-B	CSS_1007	BR	0.043	0.022	0.021	0.704	0.150
M-16	M-16-C-3	CSS_1008	BR	0.018	0.018	0.000	0.022	0.000
M-16	M-16-C-3	CSS_1009	BR	0.010	0.005	0.005	0.035	0.002
M-16	M-16-C-3	CSS_1010	BR	0.006	0.004	0.002	0.263	0.224
M-16	M-16-C-4-B	CSS_1011	BR	0.013	0.003	0.010	0.269	0.074
M-16	M-16-C-2-B	CSS_1012	BR	0.043	0.032	0.011	0.093	0.048
M-16	M-16-C-3	CSS_1013	BR	0.046	0.027	0.019	0.121	0.028
M-16	M-16-C-3	CSS_1014	BR	0.017	0.005	0.012	0.061	0.005
M-16	M-16-C-3	CSS_1015	BR	0.025	0.016	0.009	0.362	0.418
M-16	M-16-C-3	CSS_1016	BR	0.011	0.000	0.011	0.014	0.002
M-16	M-16-C-3	CSS_1017	BR	0.011	0.000	0.011	3.022	1.960
M-16	M-16-C-3	CSS_1018	BR	0.032	0.021	0.011	0.315	0.009
M-16	M-16-C-1	CSS_1019	BR	0.005	0.005	0.000	0.022	0.000
M-16	M-16-C-9	CSS_1020	BR	0.027	0.027	0.000	0.035	0.014
M-16	M-16-C-2-B	CSS_1021	BR	0.028	0.003	0.025	8.084	3.081
M-16	M-16-C-6	CSS_1022	BR	0.006	0.001	0.005	0.038	0.007
M-16	M-16-C-6	CSS_1023	BR	0.013	0.001	0.012	1.140	0.439
M-16	M-16-C-3	CSS_1024	BR	0.016	0.002	0.014	0.037	0.053

ALCOSAN POC	Model Subcatchment	Concept Municipal Project UID	BMP Type	Concept Municipal Project Area (acres)	Public ROW or Parcel		Concept Municipal Project Individual Drainage Area (acres)*	Concept Municipal Project Individual Project Impervious Drainage Area (acres)*
					Area of Municipal Project in Public ROW (acres)	Area of Municipal Project outside of Public ROW (acres)		
M-16	M-16-C-4-B	CSS_1025	BR	0.032	0.025	0.007	0.048	0.025
M-16	M-16-C-4-B	CSS_1026	BR	0.009	0.006	0.003	0.053	0.009
M-16	M-16-C-4-B	CSS_1027	BR	0.008	0.000	0.008	0.009	0.005
M-16	M-16-C-3	CSS_1028	BR	0.017	0.013	0.004	0.177	0.033
M-16	M-16-C-3	CSS_1029	BR	0.017	0.009	0.008	0.038	0.013
M-16	M-16-C-2-A	CSS_1030	BR	0.037	0.012	0.025	0.178	0.105
M-16	M-16-C-1	CSS_1031	BR	0.038	0.004	0.034	0.167	0.056
M-16	M-16-C-3	CSS_1032	BR	0.012	0.001	0.011	2.737	0.402
M-16	M-16-C-2-A	CSS_1033	BR	0.015	0.005	0.010	0.017	0.001
M-16	M-16-C-2-A	CSS_1034	BR	0.012	0.002	0.010	0.030	0.005
M-16	M-16-C-4-A	CSS_1035	BR	0.016	0.000	0.016	0.683	0.194
M-16	M-16-C-3	CSS_1036	BR	0.019	0.018	0.001	0.124	0.124
M-16	M-16-C-3	CSS_1037	BR	0.031	0.000	0.031	2.015	1.745
M-16	M-16-C-3	CSS_1038	BR	0.015	0.001	0.014	0.068	0.121
M-16	M-16-C-1	CSS_1039	BR	0.140	0.000	0.140	0.334	0.107
M-16	M-16-C-1	CSS_1040	BR	0.032	0.000	0.032	0.776	0.363
M-16	M-16-C-2-B	CSS_1041	BR	0.011	0.003	0.008	0.150	0.103
M-16	M-16-C-1	CSS_1042	BR	0.009	0.004	0.005	0.076	0.027
M-17	M-17-C-1	CSS_1043	BR	0.033	0.011	0.022	0.058	0.003
M-17	M-17-C-1	CSS_1044	BR	0.081	0.070	0.011	0.206	0.038
M-18	M-18-C-1	CSS_1045	BR	0.033	0.014	0.019	0.036	0.005
M-20	M-20-C-1	CSS_1046	BR	0.035	0.002	0.033	0.291	0.086
M-20	M-20-C-2	CSS_1047	BR	0.029	0.017	0.012	0.165	0.101
M-20	M-20-C-2	CSS_1048	BR	0.053	0.004	0.049	0.318	0.296
M-20	M-20-C-1	CSS_1049	BR	0.024	0.001	0.023	0.160	0.105
M-20	M-20-C-1	CSS_1050	BR	0.070	0.000	0.070	0.523	0.266
M-20	M-20-C-1	CSS_1051	BR	0.025	0.012	0.013	0.407	0.275
M-20	M-20-C-1	CSS_1052	BR	0.090	0.061	0.029	0.297	0.188
M-21	M-21-C-1-A	CSS_1053	BR	0.004	0.000	0.004	0.010	0.005
M-21	M-21-C-1-A	CSS_1054	BR	0.003	0.000	0.003	0.010	0.010
M-21	M-21-C-1-A	CSS_1055	BR	0.005	0.000	0.005	0.074	0.074
M-21	M-21-C-1-A	CSS_1056	BR	0.007	0.003	0.004	0.072	0.023
M-21	M-21-C-1-A	CSS_1057	BR	0.104	0.074	0.030	1.080	0.459
M-21	M-21-C-1-A	CSS_1058	BR	0.016	0.005	0.011	1.122	0.900
M-21	M-21-C-1-A	CSS_1059	BR	0.017	0.006	0.011	0.989	0.767
M-22	M-22-C-1-A	CSS_1060	BR	0.003	0.000	0.003	0.005	0.005
M-22	M-22-C-1-A	CSS_1061	BR	0.005	0.002	0.003	0.007	0.007
M-22	M-22-C-1-A	CSS_1062	BR	0.096	0.036	0.060	1.553	0.963

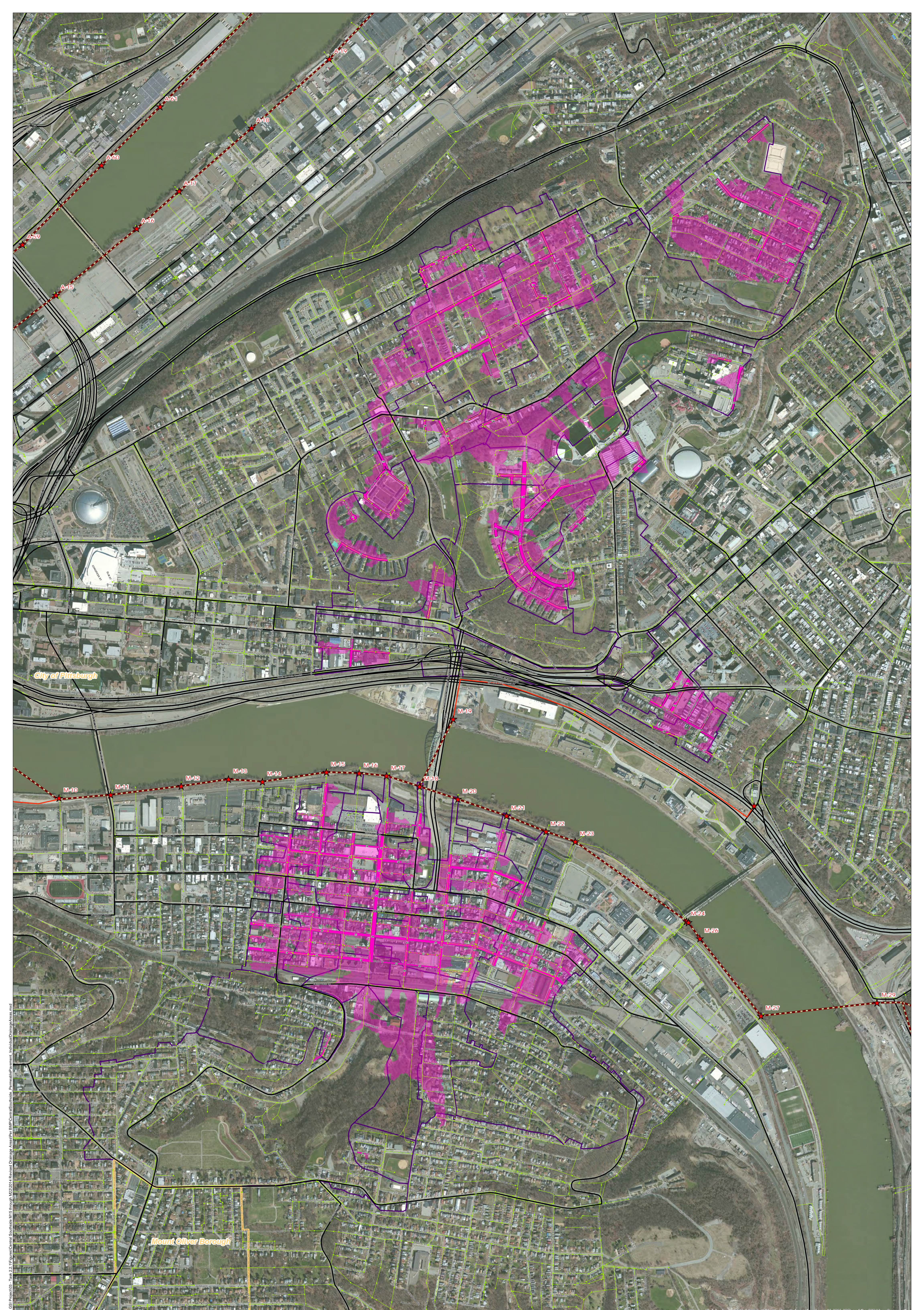
ALCOSAN POC	Model Subcatchment	Concept Municipal Project UID	BMP Type	Concept Municipal Project Area (acres)	Public ROW or Parcel		Concept Municipal Project Individual Drainage Area (acres)*	Concept Municipal Project Individual Project Impervious Drainage Area (acres)*
					Area of Municipal Project in Public ROW (acres)	Area of Municipal Project outside of Public ROW (acres)		
M-22	M-22-C-1-A	CSS_1063	BR	0.009	0.008	0.001	0.015	0.001
M-22	M-22-C-1-A	CSS_1064	BR	0.038	0.011	0.027	0.927	0.551
M-22	M-22-C-1-A	CSS_1065	BR	0.004	0.001	0.003	0.168	0.094
M-22	M-22-C-1-A	CSS_1066	BR	0.002	0.001	0.001	0.003	0.000
M-22	M-22-C-1-A	CSS_1067	BR	0.015	0.014	0.001	0.024	0.000
M-22	M-22-C-1-B	CSS_1068	BR	0.144	0.129	0.015	0.336	0.097
M-22	M-22-C-1-A	CSS_1069	BR	0.017	0.006	0.011	0.043	0.017
M-22	M-22-C-1-A	CSS_1070	BR	0.102	0.052	0.050	0.285	0.102
M-22	M-22-C-1-B	CSS_1071	BR	0.124	0.003	0.121	0.721	0.045
M-19-00	M-19-C-6	CSS_1073	BR	0.008	0.004	0.004	0.047	0.009
M-19-00	M-19-C-6	CSS_1074	BR	0.011	0.010	0.001	0.683	0.145
M-19-00	M-19-C-10	CSS_1075	BR	0.069	0.053	0.016	6.247	1.875
M-19-00	M-19-C-10	CSS_1077	BR	0.009	0.005	0.004	0.984	0.096
M-19-00	M-19-C-10	CSS_1079	BR	0.145	0.056	0.089	0.941	0.534
M-19-00	M-19-C-10	CSS_1081	BR	0.163	0.067	0.096	3.292	0.817
M-19-00	M-19-C-10	CSS_1084	BR	0.024	0.016	0.008	9.965	3.361
M-19-00	M-19-C-10	CSS_1085	BR	0.024	0.017	0.007	0.154	0.065
M-19-00	M-19-C-10	CSS_1086	BR	0.020	0.011	0.009	0.708	0.188
M-19-00	M-19-C-10	CSS_1087	BR	0.020	0.003	0.017	4.225	1.173
M-19-00	M-19-C-10	CSS_1088	BR	0.020	0.009	0.011	0.029	0.004
M-19-00	M-19-C-5-A	CSS_1090	BR	0.039	0.000	0.039	0.128	0.026
M-19-00	M-19-C-5-A	CSS_1091	BR	0.032	0.000	0.032	0.203	0.051
M-19-00	M-19-C-5-B	CSS_1104	BR	0.032	0.020	0.012	0.114	0.077
M-19-00	M-19-C-5-B	CSS_1106	BR	0.032	0.021	0.011	1.880	0.140
M-19-00	M-19-C-5-A	CSS_1107	BR	0.042	0.022	0.020	6.730	1.679
M-19-00	M-19-C-5-B	CSS_1108	BR	0.048	0.042	0.006	0.057	0.003
M-19-00	M-19-C-5-B	CSS_1109	BR	0.031	0.023	0.008	0.036	0.002
M-19-02	M-19-C-1-C	CSS_1110	BR	0.016	0.014	0.002	0.046	0.000
M-19-02	M-19-C-1-C	CSS_1113	BR	0.065	0.045	0.020	0.288	0.170
M-19-02	M-19-C-1-C	CSS_1114	BR	0.013	0.009	0.004	0.029	0.003
M-19-02	M-19-C-1-C	CSS_1115	BR	0.008	0.004	0.004	0.340	0.099
M-19-02	M-19-C-1-C	CSS_1116	BR	0.028	0.016	0.012	0.202	0.111
M-19-00	M-19-C-1-B	CSS_1118	BR	0.004	0.000	0.004	4.252	3.022
M-19-00	M-19-C-1-B	CSS_1119	BR	0.055	0.000	0.055	0.105	0.036
M-19-00	M-19-C-1-B	CSS_1120	BR	0.004	0.000	0.004	0.659	0.405
M-19-00	M-19-C-1-B	CSS_1121	BR	0.004	0.000	0.004	0.048	0.029
M-19-00	M-19-C-3-A	CSS_1122	BR	0.042	0.036	0.006	0.322	0.182
M-19-00	M-19-C-3-A	CSS_1123	BR	0.025	0.004	0.021	0.041	0.041

ALCOSAN POC	Model Subcatchment	Concept Municipal Project UID	BMP Type	Concept Municipal Project Area (acres)	Public ROW or Parcel		Concept Municipal Project Individual Drainage Area (acres)*	Concept Municipal Project Individual Project Impervious Drainage Area (acres)*
					Area of Municipal Project in Public ROW (acres)	Area of Municipal Project outside of Public ROW (acres)		
M-19-00	M-19-C-1-B	CSS_1124	BR	0.019	0.010	0.009	0.021	0.001
M-19-00	M-19-C-4	CSS_1125	BR	0.168	0.168	0.000	0.428	0.000
M-19-00	M-19-C-9	CSS_1126	BR	0.028	0.010	0.018	0.052	0.012
M-19-00	M-19-C-8-D	CSS_1127	BR	0.023	0.000	0.023	0.065	0.025
M-19-00	M-19-C-8-D	CSS_1128	BR	0.020	0.000	0.020	3.466	0.730
M-19-00	M-19-C-5-B	CSS_1129	BR	0.033	0.033	0.000	0.102	0.009
M-19-00	M-19-C-8-D	CSS_1130	BR	0.007	0.000	0.007	0.084	0.055
M-19-00	M-19-C-8-D	CSS_1131	BR	0.011	0.001	0.010	0.638	0.232
M-19-00	M-19-C-8-D	CSS_1132	BR	0.016	0.004	0.012	0.023	0.004
M-19-00	M-19-C-9	CSS_1133	BR	0.032	0.004	0.028	0.284	0.073
M-19-00	M-19-C-5-B	CSS_1134	BR	0.020	0.009	0.011	0.146	0.038
M-19-02	M-19-C-1-C	CSS_1135	BR	0.014	0.006	0.008	0.095	0.037
M-19-00	M-19-C-5-A	CSS_1136	BR	0.029	0.000	0.029	0.258	0.039
M-19-00	M-19-C-8-E	CSS_1137	BR	0.006	0.006	0.000	0.904	0.184
M-19-00	M-19-C-7	CSS_1138	BR	0.016	0.011	0.005	0.223	0.079
M-19-00	M-19-C-1-B	CSS_1139	BR	0.010	0.002	0.008	0.045	0.045
M-19-00	M-19-C-1-B	CSS_1140	BR	0.063	0.029	0.034	0.412	0.375
M-19-00	M-19-C-1-B	CSS_1141	BR	0.022	0.006	0.016	0.057	0.057
M-19-00	M-19-C-8-C	CSS_1142	BR	0.459	0.385	0.074	3.081	0.089
M-19-00	M-19-C-8-E	CSS_1143	BR	0.036	0.000	0.036	0.444	0.216
M-19-00	M-19-C-8-E	CSS_1144	BR	0.015	0.000	0.015	3.531	1.649
M-19-00	M-19-C-9	CSS_1145	BR	0.020	0.002	0.018	3.769	1.024
M-19-00	M-19-C-5-A	CSS_1146	BR	0.128	0.029	0.099	1.045	0.406
M-19-00	M-19-C-5-B	CSS_1147	BR	0.007	0.004	0.003	0.105	0.024
M-19-00	M-19-C-5-B	CSS_1148	BR	0.009	0.004	0.005	2.415	0.724
M-19-00	M-19-C-10	CSS_1149	BR	0.006	0.001	0.005	0.008	0.000
M-19-00	M-19-C-10	CSS_1150	BR	0.081	0.032	0.049	0.198	0.078
M-19-00	M-19-C-8-D	CSS_1151	BR	0.025	0.017	0.008	0.320	0.213
M-19-00	M-19-C-6	CSS_1152	BR	0.022	0.001	0.021	0.356	0.252
M-19-02	M-19-C-1-C	CSS_1153	BR	0.023	0.010	0.013	0.112	0.024
M-19-00	M-19-C-9	CSS_1154	BR	0.031	0.000	0.031	2.744	1.064
M-19-00	M-19-C-5-A	CSS_1155	BR	0.036	0.000	0.036	0.871	0.266
M-19-00	M-19-C-9	CSS_1156	BR	0.285	0.246	0.039	1.975	0.666
M-19-00	M-19-C-6	CSS_1157	BR	0.016	0.011	0.005	0.030	0.010
M-19-00	M-19-C-5-B	CSS_1158	BR	0.088	0.032	0.056	3.222	1.087
M-19-00	M-19-C-9	CSS_1159	BR	0.036	0.017	0.019	0.163	0.060
M-19-00	M-19-C-9	CSS_1160	BR	0.035	0.009	0.026	0.145	0.030
M-19-00	M-19-C-9	CSS_1161	BR	0.025	0.012	0.013	0.093	0.028

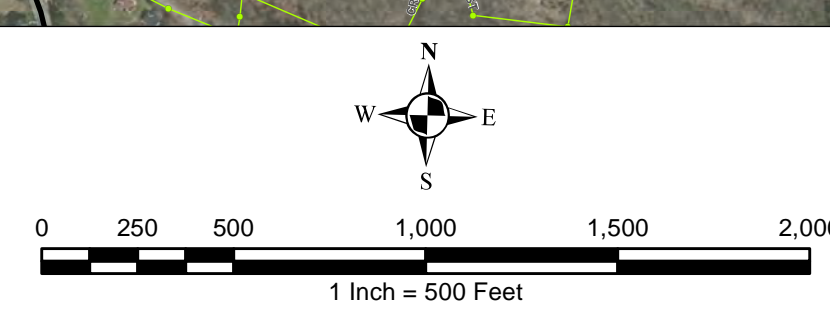
ALCOSAN POC	Model Subcatchment	Concept Municipal Project UID	BMP Type	Concept Municipal Project Area (acres)	Public ROW or Parcel		Concept Municipal Project Individual Drainage Area (acres)*	Concept Municipal Project Individual Project Impervious Drainage Area (acres)*
					Area of Municipal Project in Public ROW (acres)	Area of Municipal Project outside of Public ROW (acres)		
M-19-00	M-19-C-9	CSS_1162	BR	0.017	0.009	0.008	0.053	0.027
M-19-00	M-19-C-9	CSS_1163	BR	0.013	0.007	0.006	0.288	0.049
M-19-00	M-19-C-9	CSS_1164	BR	0.079	0.038	0.041	0.454	0.221
M-19-00	M-19-C-9	CSS_1165	BR	0.010	0.006	0.004	0.145	0.069
M-19-00	M-19-C-9	CSS_1166	BR	0.011	0.003	0.008	0.015	0.003
M-19-00	M-19-C-9	CSS_1167	BR	0.005	0.002	0.003	1.359	0.424
M-19-00	M-19-C-9	CSS_1168	BR	0.045	0.013	0.032	4.175	1.116
M-19-00	M-19-C-9	CSS_1169	BR	0.121	0.048	0.073	2.423	0.335
M-19-00	M-19-C-9	CSS_1170	BR	0.026	0.003	0.023	3.524	0.862
M-19-00	M-19-C-9	CSS_1171	BR	0.045	0.022	0.023	0.305	0.144
M-19-00	M-19-C-9	CSS_1172	BR	0.018	0.007	0.011	0.706	0.325
M-19-00	M-19-C-9	CSS_1173	BR	0.029	0.012	0.017	0.125	0.029
M-19-00	M-19-C-9	CSS_1174	BR	0.044	0.014	0.030	0.115	0.050
M-19-00	M-19-C-9	CSS_1175	BR	0.021	0.008	0.013	0.042	0.004
M-19-00	M-19-C-9	CSS_1176	BR	0.008	0.008	0.000	0.032	0.011
M-19-00	M-19-C-9	CSS_1177	BR	0.035	0.026	0.009	0.065	0.020
M-19-00	M-19-C-9	CSS_1178	BR	0.011	0.004	0.007	0.026	0.003
M-19-00	M-19-C-8-E	CSS_1179	BR	0.093	0.016	0.077	4.839	1.798
M-19-00	M-19-C-8-E	CSS_1180	BR	0.020	0.016	0.004	0.062	0.026
M-19-00	M-19-C-8-E	CSS_1181	BR	0.012	0.007	0.005	0.026	0.009
M-19-00	M-19-C-8-E	CSS_1182	BR	0.005	0.004	0.001	0.924	0.192
M-19-00	M-19-C-8-E	CSS_1183	BR	0.006	0.002	0.004	0.037	0.011
M-19-00	M-19-C-8-E	CSS_1184	BR	0.012	0.005	0.007	0.964	0.368
M-19-00	M-19-C-8-E	CSS_1185	BR	0.051	0.042	0.009	0.152	0.043
M-19-00	M-19-C-8-B	CSS_1186	BR	0.124	0.090	0.034	7.264	1.599
M-19-00	M-19-C-8-B	CSS_1187	BR	0.013	0.000	0.013	0.101	0.004
M-19-00	M-19-C-8-B	CSS_1188	BR	0.023	0.013	0.010	19.036	5.136
M-19-00	M-19-C-8-D	CSS_1189	BR	0.005	0.000	0.005	1.536	0.533
M-19-00	M-19-C-8-D	CSS_1190	BR	0.008	0.000	0.008	0.017	0.004
M-19-00	M-19-C-8-D	CSS_1191	BR	0.009	0.000	0.009	0.020	0.008
M-19-00	M-19-C-8-D	CSS_1192	BR	0.017	0.003	0.014	0.053	0.010
M-19-00	M-19-C-8-D	CSS_1193	BR	0.017	0.008	0.009	0.881	0.410
M-19-00	M-19-C-8-D	CSS_1194	BR	0.005	0.001	0.004	0.079	0.044
M-19-00	M-19-C-8-D	CSS_1195	BR	0.005	0.001	0.004	0.471	0.209
M-19-00	M-19-C-8-D	CSS_1196	BR	0.012	0.007	0.005	0.609	0.323
M-19-00	M-19-C-8-D	CSS_1197	BR	0.005	0.002	0.003	0.091	0.052
M-19-00	M-19-C-8-D	CSS_1198	BR	0.073	0.037	0.036	2.805	1.048
M-19-00	M-19-C-8-D	CSS_1199	BR	0.019	0.012	0.007	0.299	0.104

ALCOSAN POC	Model Subcatchment	Concept Municipal Project UID	BMP Type	Concept Municipal Project Area (acres)	Public ROW or Parcel		Concept Municipal Project Individual Drainage Area (acres)*	Concept Municipal Project Individual Project Impervious Drainage Area (acres)*
					Area of Municipal Project in Public ROW (acres)	Area of Municipal Project outside of Public ROW (acres)		
M-19-00	M-19-C-8-D	CSS_1200	BR	0.037	0.017	0.020	0.062	0.012
M-19-00	M-19-C-8-D	CSS_1201	BR	0.004	0.001	0.003	0.006	0.000
M-19B-00	M-19B-C-2	CSS_1202	BR	0.034	0.014	0.020	0.380	0.134
M-19B-00	M-19B-C-2	CSS_1203	BR	0.008	0.008	0.000	0.044	0.020
M-19B-00	M-19B-C-2	CSS_1204	BR	0.048	0.048	0.000	0.830	0.550
M-19B-00	M-19B-C-2	CSS_1205	BR	0.040	0.038	0.002	1.495	0.261
M-19B-00	M-19B-C-2	CSS_1206	BR	0.010	0.009	0.001	1.041	0.191
M-19-00	M-19-C-7	CSS_1207	BR	0.035	0.005	0.030	22.360	5.061
M-19-00	M-19-C-8-C	CSS_1208	BR	0.038	0.005	0.033	22.275	5.004
M-19-00	M-19-C-7	CSS_1209	BR	0.021	0.014	0.007	11.291	2.794
M-19-00	M-19-C-7	CSS_1210	BR	0.041	0.021	0.020	10.537	2.637
M-19-00	M-19-C-6	CSS_1211	BR	0.070	0.042	0.028	1.053	0.258
M-19-00	M-19-C-6	CSS_1212	BR	0.018	0.001	0.017	0.717	0.326
M-19-00	M-19-C-6	CSS_1213	BR	0.019	0.004	0.015	0.104	0.057
M-19-00	M-19-C-8-B	CSS_1214	BR	0.013	0.010	0.003	0.106	0.003
M-19-00	M-19-C-8-B	CSS_1215	BR	0.051	0.000	0.051	30.523	7.316
M-19-00	M-19-C-8-E	CSS_1216	BR	0.020	0.007	0.013	0.027	0.009
M-19-00	M-19-C-9	CSS_2001	IB	0.033	0.014	0.019	3.593	1.013
M-19-00	M-19-C-9	CSS_2002	IB	0.073	0.018	0.055	0.991	0.286
M-19-00	M-19-C-8-E	CSS_2011	IB	0.104	0.041	0.063	3.050	0.824
M-19-00	M-19-C-8-E	CSS_2012	IB	0.096	0.040	0.056	0.171	0.038
M-19-00	M-19-C-8-B	CSS_2013	IB	0.032	0.023	0.009	1.726	0.333
M-19-00	M-19-C-10	CSS_2024	IB	0.083	0.047	0.036	3.531	0.996
M-19-00	M-19-C-10	CSS_2025	IB	0.037	0.027	0.010	0.262	0.061
M-19-00	M-19-C-10	CSS_2026	IB	0.084	0.035	0.049	5.122	1.457
M-19-00	M-19-C-10	CSS_2027	IB	0.057	0.030	0.027	0.437	0.121
M-19-00	M-19-C-10	CSS_2028	IB	0.068	0.044	0.024	0.268	0.063
M-19-00	M-19-C-10	CSS_2030	IB	0.167	0.121	0.046	0.725	0.112
M-19-02	M-19-C-1-C	CSS_2033	IB	0.061	0.048	0.013	0.533	0.257
M-19-02	M-19-C-1-C	CSS_2034	IB	0.200	0.114	0.086	1.531	0.495
M-19-02	M-19-C-1-C	CSS_2035	IB	0.093	0.051	0.042	0.224	0.039
M-19-00	M-19-C-8-D	CSS_2036	IB	0.036	0.036	0.000	0.048	0.000
M-19-00	M-19-C-8-D	CSS_2037	IB	0.065	0.065	0.000	0.077	0.000
M-19-00	M-19-C-8-E	CSS_2038	IB	0.057	0.028	0.029	0.340	0.104
M-19-00	M-19-C-8-B	CSS_2039	IB	0.069	0.042	0.027	1.414	0.331
M-19-00	M-19-C-8-B	CSS_2040	IB	0.077	0.025	0.052	1.615	0.411
M-19-00	M-19-C-9	CSS_2041	IB	0.085	0.055	0.030	1.880	0.644
M-19-00	M-19-C-8-B	CSS_2042	IB	0.035	0.030	0.005	0.078	0.030

ALCOSAN POC	Model Subcatchment	Concept Municipal Project UID	BMP Type	Concept Municipal Project Area (acres)	Public ROW or Parcel		Concept Municipal Project Individual Drainage Area (acres)*	Concept Municipal Project Individual Project Impervious Drainage Area (acres)*
					Area of Municipal Project in Public ROW (acres)	Area of Municipal Project outside of Public ROW (acres)		
M-19-02	M-19-C-1-C	CSS_2043	IB	0.026	0.021	0.005	0.304	0.096
M-19-00	M-19-C-1-A	CSS_2044	IB	0.026	0.000	0.026	0.038	0.003
M-19-00	M-19-C-9	CSS_2045	IB	0.362	0.313	0.049	0.955	0.065
M-19-00	M-19-C-10	CSS_2046	IB	0.064	0.042	0.022	0.158	0.014
M-19-00	M-19-C-9	CSS_2047	IB	0.122	0.061	0.061	4.920	0.953
M-16	M-16-C-3	CSS_4001	VF	0.012	0.007	0.005	0.058	0.062
M-19-00	M-19-C-8-B	CSS_4002	VF	0.067	0.000	0.067	30.235	7.282
M-19-00	M-19-C-8-B	CSS_4003	VF	0.055	0.042	0.013	7.648	3.045



- ★ ALCOSAN Structures
- ALCOSAN Shallow-Cut Interceptor
- ALCOSAN Deep Tunnel Interceptor
- One Overall Manholes
- One Overall Sewerlines
- Permeable Pavement Municipal Projects
- Permeable Pavement Drainage Areas
- State Roads
- Combined Sewer Subcatchment
- Municipal Boundaries



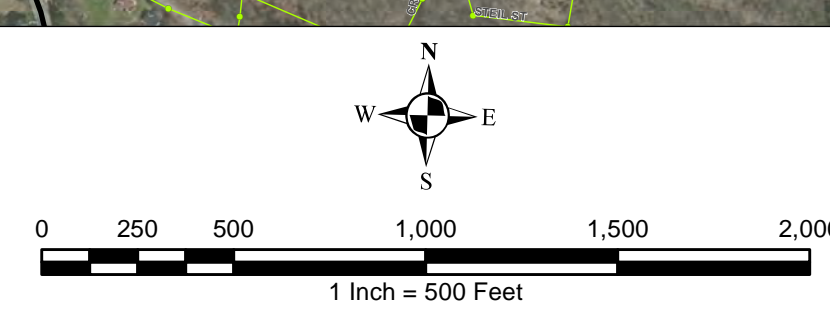
ALCOSAN GSI Project
 Central Southside (M-15 thru M-22)
 Concept Municipal Permeable Pavement GSI Projects
 Individual Project Drainage Areas

Path: N:\P\34034\34035 - ALCOSAN GSI Project\03 - Task 2.1.1 Figures\Central Southside - M15 through M22\2014 Revised\Drawings - Permeable Pavement - Individual Drainage Areas.mxd

Source: Esri, DeLorme, USGS, NAVI, GeoEye, IGN, AerGRID, AIRPHOT, Swire, USDA, AeroGRID, IGN, SPP, and the GIS User Community



- ★ ALCOSAN Structures
- ALCOSAN Shallow-Cut Interceptor
- ALCOSAN Deep Tunnel Interceptor
- One Overall Manholes
- One Overall Sewerlines
- Vegetated Filter Strips Municipal Projects
- Vegetated Filter Strips Drainage Areas
- State Roads
- Combined Sewer Subcatchment
- Municipal Boundaries



ALCOSAN GSI Project
 Central Southside (M-15 thru M-22)
 Concept Municipal Vegetated Filter Strips GSI Projects
 Individual Project Drainage Areas

Path: N:\P\34134\34134_05 - ALCOSAN GSI Project\03 - Task 2.1.1 Figures\Central Southside - Vegetated Filter Strips - Individual Drainage Areas.mxd
 ALCOSAN GSI Project\03 - Task 2.1.1 Figures\Central Southside - Vegetated Filter Strips - Individual Drainage Areas.mxd

Source: Esri, DeLorme, USGS, AIR, GeoEye, AeroGRID, IGN, SDA, Intel, and the GIS User Community

**Central Southside Concept Commercial / Institutional Permeable Pavement, Green Roof, and Special Case GSI Projects:
Summary Table**

December 27, 2013
Revised October 10, 2014

ALCOSAN POC	Model Subcatchment	Concept Comm / Inst Project UID	BMP Type	Concept Municipal Project Area (acres)	Taxable (acres)	Exempt (acres)	Provisionally Exempt (acres)	Public ROW (acres)
M-19-00	M-19-C-8-E	CSS__6001	CPP	0.421	0.000	0.421	0.000	0.000
M-19-00	M-19-C-10	CSS__6002	CPP	0.299	0.000	0.299	0.000	0.000
M-19-00	M-19-C-8-D	CSS__6003	CPP	0.051	0.000	0.051	0.000	0.000
M-19-00	M-19-C-8-B	CSS__6004	CPP	0.051	0.000	0.051	0.000	0.000
M-19-00	M-19-C-8-F	CSS__6006	CPP	0.524	0.000	0.524	0.000	0.000
M-19-00	M-19-C-10	CSS__6007	CPP	0.213	0.067	0.131	0.000	0.015
M-19-00	M-19-C-3-A	CSS__6009	CPP	0.219	0.219	0.000	0.000	0.000
M-19-02	M-19-C-1-C	CSS__6010	CPP	0.337	0.328	0.000	0.000	0.009
M-19-02	M-19-C-1-C	CSS__6012	CPP	0.449	0.000	0.422	0.000	0.027
M-19-02	M-19-C-1-C	CSS__6013	CPP	0.137	0.124	0.000	0.000	0.013
M-19-00	M-19-C-6	CSS__6015	CPP	0.210	0.000	0.210	0.000	0.000
M-19-00	M-19-C-2	CSS__6016	CPP	0.064	0.000	0.064	0.000	0.000
M-19B	M-19B-C-2	CSS__6017	CPP	0.188	0.000	0.188	0.000	0.000
M-19-00	M-19-C-6	CSS__6018	CPP	0.080	0.000	0.080	0.000	0.000
M-19-00	M-19-C-6	CSS__6019	CPP	0.147	0.000	0.147	0.000	0.000
M-19-00	M-19-C-4	CSS__6020	CPP	0.126	0.000	0.126	0.000	0.000
M-19-00	M-19-C-6	CSS__6021	CPP	0.098	0.000	0.097	0.000	0.001
M-19-00	M-19-C-6	CSS__6022	CPP	0.168	0.000	0.164	0.000	0.004
M-19B-00	M-19B-C-2	CSS__6023	CPP	0.796	0.000	0.796	0.000	0.000
M-19B-00	M-19B-C-2	CSS__6024	CPP	0.195	0.000	0.195	0.000	0.000
M-19B-00	M-19B-C-2	CSS__6025	CPP	0.160	0.160	0.000	0.000	0.000
M-19-00	M-19-C-1-B	CSS__6027	CPP	0.065	0.051	0.000	0.000	0.014
M-19B-00	M-19B-C-1	CSS__6028	CPP	0.239	0.000	0.000	0.000	0.239
M-19B-00	M-19B-C-1	CSS__6029	CPP	0.070	0.069	0.000	0.000	0.001
M-19-00	M-19-C-1-B	CSS__6030	CPP	0.260	0.260	0.000	0.000	0.000

ALCOSAN POC	Model Subcatchment	Concept Comm / Inst Project UID	BMP Type	Concept Municipal Project Area (acres)	Taxable (acres)	Exempt (acres)	Provisionally Exempt (acres)	Public ROW (acres)
M-19-00	M-19-C-1-B	CSS__6031	CPP	0.524	0.000	0.524	0.000	0.000
M-19B-00	M-19B-C-2	CSS__6032	CPP	0.373	0.000	0.370	0.000	0.003
M-19-00	M-19-C-1-B	CSS__6033	CPP	1.490	0.000	1.490	0.000	0.000
M-15Z-00	M-14A-C-1	CSS__6035	CPP	0.098	0.000	0.092	0.000	0.006
M-15Z-00	M-14A-C-1	CSS__6036	CPP	0.128	0.124	0.000	0.000	0.004
M-15-00	M-15-C-1	CSS__6037	CPP	0.563	0.563	0.000	0.000	0.000
M-15-00	M-15-C-1	CSS__6038	CPP	0.886	0.829	0.000	0.000	0.057
M-16-00	M-16-C-9	CSS__6039	CPP	0.483	0.483	0.000	0.000	0.000
M-16-00	M-16-C-1	CSS__6040	CPP	1.765	1.758	0.000	0.000	0.007
M-17-00	M-17-C-1	CSS__6041	CPP	0.144	0.099	0.045	0.000	0.000
M-15-00	M-15-C-1	CSS__6042	CPP	0.181	0.181	0.000	0.000	0.000
M-16-00	M-16-C-9	CSS__6043	CPP	0.152	0.152	0.000	0.000	0.000
M-16-00	M-16-C-6	CSS__6044	CPP	0.107	0.107	0.000	0.000	0.000
M-16-00	M-16-C-6	CSS__6045	CPP	0.147	0.147	0.000	0.000	0.000
M-16-00	M-16-C-5	CSS__6049	CPP	0.144	0.000	0.144	0.000	0.000
M-16-00	M-16-C-5	CSS__6050	CPP	0.068	0.068	0.000	0.000	0.000
M-16-00	M-16-C-5	CSS__6051	CPP	0.070	0.000	0.070	0.000	0.000
M-16-00	M-16-C-5	CSS__6052	CPP	0.080	0.000	0.080	0.000	0.000
M-16-00	M-16-C-3	CSS__6053	CPP	0.431	0.411	0.000	0.000	0.020
M-16-00	M-16-C-2-B	CSS__6054	CPP	0.377	0.377	0.000	0.000	0.000
M-21-00	M-21-C-1-A	CSS__6055	CPP	0.056	0.056	0.000	0.000	0.000
M-16-00	M-16-C-2-A	CSS__6056	CPP	0.077	0.077	0.000	0.000	0.000
M-16-00	M-16-C-2-A	CSS__6057	CPP	0.145	0.000	0.145	0.000	0.000
M-16-00	M-16-C-2-A	CSS__6058	CPP	0.416	0.000	0.416	0.000	0.000
M-16-00	M-16-C-1	CSS__6059	CPP	0.095	0.000	0.095	0.000	0.000
M-16-00	M-16-C-1	CSS__6060	CPP	0.088	0.000	0.087	0.000	0.001
M-16-00	M-16-C-1	CSS__6061	CPP	0.124	0.000	0.121	0.000	0.003
M-16-00	M-16-C-1	CSS__6062	CPP	0.049	0.045	0.000	0.000	0.004
M-16-00	M-16-C-1	CSS__6063	CPP	0.061	0.056	0.000	0.000	0.005
M-16-00	M-16-C-1	CSS__6064	CPP	0.540	0.004	0.534	0.000	0.002

ALCOSAN POC	Model Subcatchment	Concept Comm / Inst Project UID	BMP Type	Concept Municipal Project Area (acres)	Taxable (acres)	Exempt (acres)	Provisionally Exempt (acres)	Public ROW (acres)
M-16-00	M-16-C-1	CSS__6065	CPP	0.424	0.368	0.000	0.000	0.056
M-16-00	M-16-C-3	CSS__6066	CPP	0.178	0.000	0.178	0.000	0.000
M-16-00	M-16-C-3	CSS__6067	CPP	0.074	0.065	0.000	0.000	0.009
M-16-00	M-16-C-3	CSS__6068	CPP	0.053	0.053	0.000	0.000	0.000
M-16-00	M-16-C-3	CSS__6069	CPP	0.449	0.000	0.449	0.000	0.000
M-16-00	M-16-C-4-A	CSS__6072	CPP	1.257	0.000	1.076	0.000	0.181
M-17-00	M-17-C-1	CSS__6073	CPP	1.047	1.043	0.000	0.000	0.004
M-16-00	M-16-C-9	CSS__6074	CPP	0.238	0.238	0.000	0.000	0.000
M-17-00	M-17-C-1	CSS__6075	CPP	0.358	0.185	0.048	0.000	0.125
M-18-00	M-18-C-1	CSS__6076	CPP	0.209	0.194	0.000	0.000	0.015
M-17-00	M-17-C-1	CSS__6077	CPP	0.110	0.105	0.000	0.000	0.005
M-17-00	M-17-C-1	CSS__6078	CPP	0.057	0.055	0.000	0.000	0.002
M-18-00	M-18-C-1	CSS__6079	CPP	0.105	0.100	0.000	0.000	0.005
M-17-00	M-17-C-1	CSS__6080	CPP	0.047	0.047	0.000	0.000	0.000
M-18-00	M-18-C-1	CSS__6081	CPP	0.081	0.074	0.000	0.000	0.007
M-21-00	M-21-C-2	CSS__6082	CPP	0.436	0.432	0.000	0.000	0.004
M-20-00	M-20-C-2	CSS__6083	CPP	0.055	0.054	0.000	0.000	0.001
M-21-00	M-21-C-2	CSS__6084	CPP	0.109	0.058	0.000	0.000	0.051
M-21-00	M-21-C-1-A	CSS__6085	CPP	0.065	0.065	0.000	0.000	0.000
M-21-00	M-21-C-2	CSS__6086	CPP	0.053	0.038	0.000	0.000	0.015
M-20-00	M-20-C-1	CSS__6087	CPP	0.239	0.000	0.197	0.000	0.042
M-21-00	M-21-C-1-A	CSS__6088	CPP	0.053	0.045	0.000	0.000	0.008
M-21-00	M-21-C-1-A	CSS__6089	CPP	0.126	0.125	0.000	0.000	0.001
M-21-00	M-21-C-1-A	CSS__6090	CPP	0.121	0.121	0.000	0.000	0.000
M-20-00	M-20-C-1	CSS__6091	CPP	0.113	0.105	0.000	0.000	0.008
M-20-00	M-20-C-1	CSS__6092	CPP	0.047	0.046	0.000	0.000	0.001
M-20-00	M-20-C-1	CSS__6093	CPP	0.064	0.064	0.000	0.000	0.000
M-22-00	M-22-C-1-A	CSS__6094	CPP	0.333	0.333	0.000	0.000	0.000
M-21-00	M-21-C-1-A	CSS__6095	CPP	1.057	1.057	0.000	0.000	0.000
M-22-00	M-22-C-1-A	CSS__6096	CPP	0.354	0.354	0.000	0.000	0.000

ALCOSAN POC	Model Subcatchment	Concept Comm / Inst Project UID	BMP Type	Concept Municipal Project Area (acres)	Taxable (acres)	Exempt (acres)	Provisionally Exempt (acres)	Public ROW (acres)
M-21-00	M-21-C-1-A	CSS__6097	CPP	0.307	0.278	0.000	0.000	0.029
M-22-00	M-22-C-1-A	CSS__6099	CPP	0.145	0.000	0.145	0.000	0.000
M-21-00	M-21-C-1-A	CSS__6100	CPP	0.088	0.081	0.000	0.000	0.007
M-21-00	M-21-C-1-A	CSS__6101	CPP	0.111	0.091	0.000	0.000	0.020
M-21-00	M-21-C-1-B	CSS__6102	CPP	0.075	0.057	0.000	0.000	0.018
M-21-00	M-21-C-1-A	CSS__6103	CPP	0.070	0.063	0.000	0.000	0.007
M-21-00	M-21-C-1-B	CSS__6104	CPP	0.124	0.112	0.000	0.000	0.012
M-21-00	M-21-C-1-B	CSS__6105	CPP	0.521	0.521	0.000	0.000	0.000
M-21-00	M-21-C-1-A	CSS__6106	CPP	0.264	0.264	0.000	0.000	0.000
M-21-00	M-21-C-1-A	CSS__6107	CPP	0.904	0.865	0.000	0.000	0.039
M-21-00	M-21-C-1-A	CSS__6108	CPP	0.145	0.000	0.144	0.000	0.001
M-21-00	M-21-C-1-A	CSS__6109	CPP	0.260	0.208	0.000	0.000	0.052
M-21-00	M-21-C-1-A	CSS__6110	CPP	0.174	0.000	0.000	0.000	0.174
M-22-00	M-22-C-1-A	CSS__6111	CPP	0.050	0.050	0.000	0.000	0.000
M-22-00	M-22-C-1-A	CSS__6112	CPP	0.863	0.863	0.000	0.000	0.000
M-22-00	M-22-C-1-A	CSS__6113	CPP	0.140	0.000	0.130	0.000	0.010
M-22-00	M-22-C-1-A	CSS__6114	CPP	0.264	0.000	0.256	0.000	0.008
M-22-00	M-22-C-1-A	CSS__6115	CPP	0.067	0.056	0.000	0.000	0.011
M-22-00	M-22-C-1-A	CSS__6116	CPP	0.142	0.142	0.000	0.000	0.000
M-22-00	M-22-C-1-A	CSS__6118	CPP	0.129	0.115	0.012	0.000	0.002
M-22-00	M-22-C-1-A	CSS__6119	CPP	0.067	0.066	0.000	0.000	0.001
M-22-00	M-22-C-1-A	CSS__6120	CPP	0.065	0.061	0.000	0.000	0.004
M-22-00	M-22-C-1-A	CSS__6121	CPP	0.111	0.111	0.000	0.000	0.000
M-22-00	M-22-C-1-A	CSS__6122	CPP	0.069	0.069	0.000	0.000	0.000
M-22-00	M-22-C-1-A	CSS__6123	CPP	0.296	0.074	0.000	0.036	0.186
M-22-00	M-22-C-1-B	CSS__6124	CPP	0.072	0.019	0.000	0.053	0.000
M-22-00	M-22-C-1-A	CSS__6125	CPP	0.099	0.000	0.098	0.000	0.001
M-22-00	M-22-C-1-B	CSS__6126	CPP	0.076	0.000	0.068	0.007	0.001
M-22-00	M-22-C-1-B	CSS__6128	CPP	0.154	0.126	0.000	0.028	0.000
M-22-00	M-22-C-1-A	CSS__6129	CPP	0.298	0.242	0.000	0.000	0.056

ALCOSAN POC	Model Subcatchment	Concept Comm / Inst Project UID	BMP Type	Concept Municipal Project Area (acres)	Taxable (acres)	Exempt (acres)	Provisionally Exempt (acres)	Public ROW (acres)
M-22-00	M-22-C-1-B	CSS__6130	CPP	0.534	0.533	0.000	0.000	0.001
M-15	M-15-C-1	CSS__7001	GR	0.157	0.141	0.000	0.000	0.016
M-15	M-15-C-1	CSS__7002	GR	0.245	0.244	0.001	0.000	0.000
M-15	M-15-C-1	CSS__7003	GR	0.835	0.835	0.000	0.000	0.000
M-15Z	M-14A-C-1	CSS__7004	GR	0.123	0.115	0.000	0.000	0.008
M-15Z	M-14A-C-1	CSS__7005	GR	0.157	0.157	0.000	0.000	0.000
M-16	M-16-C-1	CSS__7006	GR	0.434	0.427	0.000	0.000	0.007
M-16	M-16-C-1	CSS__7007	GR	0.117	0.117	0.000	0.000	0.000
M-16	M-16-C-1	CSS__7008	GR	0.834	0.763	0.000	0.000	0.071
M-16	M-16-C-1	CSS__7009	GR	0.374	0.000	0.374	0.000	0.000
M-16	M-16-C-1	CSS__7010	GR	0.116	0.102	0.000	0.000	0.014
M-16	M-16-C-1	CSS__7011	GR	0.129	0.124	0.000	0.000	0.005
M-16	M-16-C-2-B	CSS__7012	GR	1.451	0.000	1.434	0.000	0.017
M-16	M-16-C-5	CSS__7013	GR	0.170	0.000	0.170	0.000	0.000
M-16	M-16-C-6	CSS__7014	GR	0.336	0.001	0.333	0.000	0.002
M-16	M-16-C-1	CSS__7015	GR	0.181	0.181	0.000	0.000	0.000
M-16	M-16-C-1	CSS__7016	GR	0.172	0.162	0.000	0.000	0.010
M-16	M-16-C-2-A	CSS__7017	GR	0.365	0.354	0.006	0.000	0.005
M-16	M-16-C-3	CSS__7018	GR	0.167	0.000	0.167	0.000	0.000
M-16	M-16-C-1	CSS__7019	GR	1.247	1.247	0.000	0.000	0.000
M-16	M-16-C-9	CSS__7020	GR	0.625	0.625	0.000	0.000	0.000
M-16	M-16-C-4-B	CSS__7021	GR	0.115	0.000	0.115	0.000	0.000
M-16	M-16-C-4-B	CSS__7022	GR	0.182	0.000	0.178	0.000	0.004
M-16	M-16-C-8	CSS__7023	GR	0.242	0.226	0.016	0.000	0.000
M-16	M-16-C-2-B	CSS__7024	GR	0.479	0.456	0.000	0.000	0.023
M-16	M-16-C-1	CSS__7025	GR	0.180	0.173	0.000	0.000	0.007
M-16	M-16-C-2-A	CSS__7026	GR	0.389	0.389	0.000	0.000	0.000
M-16	M-16-C-2-A	CSS__7027	GR	0.206	0.000	0.191	0.000	0.015
M-17	M-17-C-1	CSS__7028	GR	0.216	0.212	0.000	0.000	0.004
M-17	M-17-C-1	CSS__7029	GR	0.258	0.258	0.000	0.000	0.000

ALCOSAN POC	Model Subcatchment	Concept Comm / Inst Project UID	BMP Type	Concept Municipal Project Area (acres)	Taxable (acres)	Exempt (acres)	Provisionally Exempt (acres)	Public ROW (acres)
M-17	M-17-C-1	CSS__7030	GR	0.310	0.308	0.000	0.000	0.002
M-17	M-17-C-1	CSS__7031	GR	0.840	0.824	0.000	0.000	0.016
M-17	M-17-C-1	CSS__7032	GR	0.154	0.146	0.000	0.000	0.008
M-18	M-18-C-1	CSS__7033	GR	0.144	0.000	0.144	0.000	0.000
M-20	M-20-C-1	CSS__7034	GR	0.172	0.169	0.000	0.000	0.003
M-20	M-20-C-1	CSS__7035	GR	0.730	0.686	0.000	0.000	0.044
M-21	M-21-C-1-A	CSS__7036	GR	0.457	0.061	0.389	0.000	0.007
M-21	M-21-C-1-A	CSS__7037	GR	0.125	0.000	0.125	0.000	0.000
M-21	M-21-C-1-A	CSS__7038	GR	0.461	0.449	0.000	0.000	0.012
M-21	M-21-C-1-A	CSS__7039	GR	0.659	0.652	0.000	0.000	0.007
M-21	M-21-C-1-A	CSS__7040	GR	0.177	0.177	0.000	0.000	0.000
M-21	M-21-C-1-B	CSS__7041	GR	0.139	0.139	0.000	0.000	0.000
M-21	M-21-C-1-A	CSS__7042	GR	0.260	0.260	0.000	0.000	0.000
M-21	M-21-C-1-A	CSS__7043	GR	0.219	0.219	0.000	0.000	0.000
M-21	M-21-C-1-B	CSS__7044	GR	0.151	0.151	0.000	0.000	0.000
M-21	M-21-C-2	CSS__7045	GR	0.722	0.711	0.000	0.000	0.011
M-21	M-21-C-1-B	CSS__7046	GR	0.451	0.450	0.000	0.000	0.001
M-21	M-21-C-1-A	CSS__7047	GR	0.326	0.319	0.000	0.000	0.007
M-21	M-21-C-1-A	CSS__7048	GR	0.350	0.350	0.000	0.000	0.000
M-21	M-21-C-1-A	CSS__7049	GR	0.210	0.192	0.000	0.000	0.018
M-21	M-21-C-1-A	CSS__7050	GR	0.255	0.249	0.000	0.000	0.006
M-22	M-22-C-1-A	CSS__7051	GR	0.149	0.124	0.000	0.000	0.025
M-22	M-22-C-1-A	CSS__7052	GR	0.341	0.341	0.000	0.000	0.000
M-22	M-22-C-1-A	CSS__7053	GR	0.237	0.237	0.000	0.000	0.000
M-22	M-22-C-1-A	CSS__7054	GR	2.555	2.554	0.000	0.000	0.001
M-22	M-22-C-1-A	CSS__7055	GR	0.448	0.000	0.413	0.000	0.035
M-22	M-22-C-1-B	CSS__7056	GR	0.326	0.315	0.000	0.000	0.011
M-22	M-22-C-1-A	CSS__7057	GR	0.178	0.178	0.000	0.000	0.000
M-22	M-22-C-1-A	CSS__7058	GR	0.357	0.348	0.000	0.000	0.009
M-22	M-22-C-1-A	CSS__7059	GR	0.255	0.236	0.000	0.000	0.019

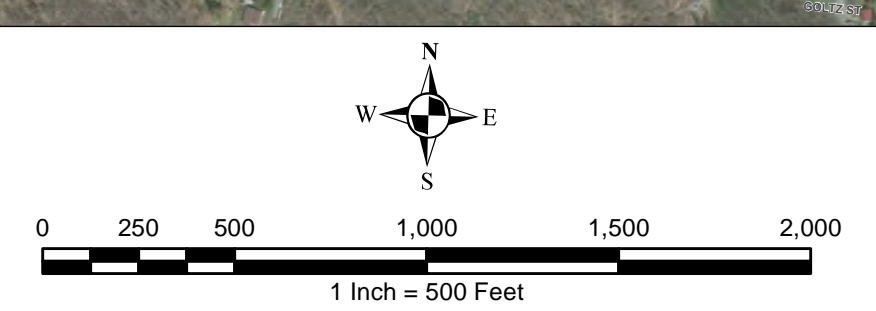
ALCOSAN POC	Model Subcatchment	Concept Comm / Inst Project UID	BMP Type	Concept Municipal Project Area (acres)	Taxable (acres)	Exempt (acres)	Provisionally Exempt (acres)	Public ROW (acres)
M-22	M-22-C-1-A	CSS__7060	GR	0.331	0.322	0.000	0.000	0.009
M-22	M-22-C-1-A	CSS__7061	GR	0.513	0.489	0.000	0.000	0.024
M-19	M-19-C-7	CSS__7062	GR	0.224	0.000	0.224	0.000	0.000
M-19	M-19-C-1-B	CSS__7063	GR	0.491	0.479	0.000	0.000	0.012
M-19	M-19-C-1-B	CSS__7064	GR	0.195	0.195	0.000	0.000	0.000
M-19	M-19-C-8-B	CSS__7065	GR	0.182	0.000	0.182	0.000	0.000
M-19	M-19-C-7	CSS__7066	GR	0.225	0.225	0.000	0.000	0.000
M-19	M-19-C-1-B	CSS__7067	GR	0.331	0.000	0.331	0.000	0.000
M-19	M-19-C-8-D	CSS__7068	GR	0.117	0.117	0.000	0.000	0.000
M-19	M-19-C-1-B	CSS__7069	GR	0.333	0.000	0.333	0.000	0.000
M-19	M-19-C-8-D	CSS__7070	GR	0.180	0.000	0.180	0.000	0.000
M-19	M-19-C-1-B	CSS__7071	GR	0.378	0.000	0.378	0.000	0.000
M-19	M-19-C-3-A	CSS__7072	GR	0.250	0.250	0.000	0.000	0.000
M-19	M-19-C-3-A	CSS__7073	GR	0.117	0.000	0.117	0.000	0.000
M-19	M-19-C-3-A	CSS__7074	GR	0.235	0.234	0.000	0.000	0.001
M-19	M-19-C-1-B	CSS__7075	GR	0.123	0.117	0.000	0.000	0.006
M-19	M-19-C-1-B	CSS__7076	GR	0.174	0.000	0.148	0.000	0.026
M-19	M-19-C-9	CSS__7077	GR	0.561	0.000	0.561	0.000	0.000
M-19	M-19-C-8-F	CSS__7078	GR	0.183	0.000	0.183	0.000	0.000
M-19	M-19-C-8-B	CSS__7079	GR	1.227	0.000	1.227	0.000	0.000
M-19	M-19-C-10	CSS__7080	GR	0.750	0.000	0.750	0.000	0.000
M-19	M-19-C-5-B	CSS__7081	GR	0.251	0.000	0.251	0.000	0.000
M-19	M-19-C-8-F	CSS__7082	GR	1.983	0.000	1.983	0.000	0.000
M-19-02	M-19-C-1-C	CSS__7083	GR	0.124	0.124	0.000	0.000	0.000
M-19-02	M-19-C-1-C	CSS__7084	GR	0.222	0.218	0.000	0.000	0.004
M-19-02	M-19-C-1-C	CSS__7085	GR	0.165	0.158	0.000	0.000	0.007
M-19B	M-19B-C-2	CSS__7086	GR	0.121	0.000	0.121	0.000	0.000
M-19B	M-19B-C-2	CSS__7087	GR	0.227	0.000	0.227	0.000	0.000
M-19B	M-19B-C-2	CSS__7088	GR	0.122	0.122	0.000	0.000	0.000
M-19B	M-19B-C-2	CSS__7089	GR	0.115	0.115	0.000	0.000	0.000

ALCOSAN POC	Model Subcatchment	Concept Comm / Inst Project UID	BMP Type	Concept Municipal Project Area (acres)	Taxable (acres)	Exempt (acres)	Provisionally Exempt (acres)	Public ROW (acres)
M-19B	M-19B-C-2	CSS__7090	GR	0.345	0.000	0.345	0.000	0.000
M-19B	M-19B-C-2	CSS__7091	GR	0.285	0.285	0.000	0.000	0.000
M-19B	M-19B-C-2	CSS__7092	GR	0.308	0.308	0.000	0.000	0.000
M-19B	M-19B-C-2	CSS__7093	GR	0.159	0.159	0.000	0.000	0.000
M-19B	M-19B-C-2	CSS__7094	GR	0.389	0.000	0.389	0.000	0.000
M-19B	M-19B-C-2	CSS__7095	GR	0.144	0.144	0.000	0.000	0.000
M-19-00	M-19-C-1-B	CSS__8001	SRPP	0.313	0.000	0.000	0.000	0.313
M-19-02	M-19-C-1-C	CSS__8002	SRPP	0.685	0.000	0.000	0.000	0.685
M-19B-00	M-19B-C-2	CSS__8003	SRPP	0.293	0.000	0.000	0.000	0.293
M-16-00	M-16-C-1	CSS__8004	SRPP	0.409	0.000	0.000	0.000	0.409
M-16-00	M-16-C-1	CSS__8005	SRPP	1.209	0.000	0.000	0.000	1.209
M-16-00	M-16-C-2-B	CSS__8006	SRPP	0.282	0.000	0.000	0.000	0.282
M-16-00	M-16-C-5	CSS__8007	SRPP	0.264	0.000	0.000	0.000	0.264
M-16-00	M-16-C-6	CSS__8008	SRPP	0.494	0.000	0.000	0.000	0.494
M-16-00	M-16-C-2-A	CSS__8009	SRPP	0.589	0.018	0.000	0.000	0.571
M-22-00	M-22-C-1-B	CSS__8010	SRPP	0.539	0.000	0.000	0.000	0.539
M-22-00	M-22-C-1-A	CSS__8011	SRPP	1.200	0.000	0.000	0.000	1.200
M-22-00	M-22-C-1-A	CSS__8012	SRPP	1.140	0.000	0.000	0.000	1.140
M-19-00	M-19-C-8-B	CSS__8013	SRPP	0.399	0.003	0.000	0.000	0.396
M-19-00	M-19-C-8-B	CSS__8014	SRPP	0.655	0.156	0.000	0.000	0.499
M-19-00	M-19-C-8-B	CSS__8015	SRPP	0.797	0.000	0.000	0.000	0.797
M-19-00	M-19-C-8-B	CSS__8016	SRPP	1.049	0.000	0.000	0.000	1.049
M-19-00	M-19-C-8-E	CSS__8017	SRPP	0.292	0.000	0.000	0.000	0.292
M-19-00	M-19-C-6	CSS__8019	SRPP	0.294	0.000	0.000	0.000	0.294
M-20-00	M-20-C-1	CSS__8020	SRPP	0.486	0.000	0.000	0.000	0.486
M-21-00	M-21-C-1-A	CSS__8021	SRPP	0.804	0.000	0.000	0.000	0.804
M-21-00	M-21-C-1-A	CSS__8022	SRPP	0.771	0.000	0.000	0.000	0.771
M-16-00	M-16-C-4-A	CSS__8023	SRPP	0.542	0.000	0.000	0.000	0.542
M-16-00	M-16-C-8	CSS__8024	SRPP	0.572	0.022	0.000	0.000	0.550
M-19-00	M-19-C-9	CSS__8025	SRPP	0.767	0.000	0.000	0.000	0.767

ALCOSAN POC	Model Subcatchment	Concept Comm / Inst Project UID	BMP Type	Concept Municipal Project Area (acres)	Taxable (acres)	Exempt (acres)	Provisionally Exempt (acres)	Public ROW (acres)
M-19-00	M-19-C-10	CSS__8026	SRPP	1.482	0.000	0.000	0.000	1.482
M-19-00	M-19-C-2	CSS__8027	SRPP	0.679	0.000	0.000	0.000	0.679
M-19-00	M-19-C-3-A	CSS__8028	SRPP	1.224	0.000	0.000	0.000	1.224
M-15-00	M-15-C-1	CSS__8029	SRPP	0.199	0.000	0.000	0.000	0.199
M-17-00	M-17-C-1	CSS__8030	SRPP	0.328	0.015	0.000	0.000	0.313
M-15Z-00	M-14A-C-1	CSS__8031	SRPP	0.458	0.000	0.000	0.000	0.458
M-15Z-00	M-14A-C-1	CSS__8032	SRPP	0.235	0.000	0.000	0.000	0.235
M-15Z-00	M-14A-C-1	CSS__8033	SRPP	0.097	0.000	0.000	0.000	0.097
M-18-00	M-18-C-1	CSS__8034	SRPP	0.619	0.000	0.000	0.000	0.619
M-18-00	M-18-C-1	CSS__8035	SRPP	0.393	0.000	0.000	0.000	0.393
M-19-00	M-19-C-1-B	CSS__8036	SRPP	0.394	0.000	0.000	0.000	0.394
M-19B-00	M-19B-C-2	CSS__8037	SRPP	0.545	0.002	0.000	0.000	0.543
M-21-00	M-21-C-1-B	CSS__8038	SRPP	0.404	0.000	0.000	0.000	0.404
M-16-00	M-16-C-3	CSS__8039	SRPP	0.474	0.000	0.000	0.000	0.474



- ★ ALCOSAN Structures
- ALCOSAN Shallow-Cut Interceptor
- ALCOSAN Deep Tunnel Interceptor
- Special Case
- Concept Commercial / Institutional Permeable Pavement Projects
- Concept Green Roof Projects
- State Roads
- Combined Sewer Subcatchment
- Municipal Boundaries



ALCOSAN GSI Project
M-15 through M-22
Concept Commercial / Institutional
and Green Roofs GSI Projects

File: I:\PROJECTS\ALCOSAN GSI Project\03 - Task 2.1 - Figures\M15 - M22 - CommGISR.mxd
 Source: Esri, DeLorme, USGS, AIR, GeoEye, IGN, Aeriac, AeroGRID, IGN, SPP, and the GIS User Community