

### 5.3 Study Area 3 – Nine Mile Run

These findings apply to ALCOSAN Point of Connection M-47, which includes combined sewer system in the City of Pittsburgh.

#### Nine Mile Run - BMP GIS Features

The SUSTAIN BMP siting tool analysis resulted in identification of a total of 6,896 BMP GIS Features covering 368 acres, which consisted of the following:

**Table 5.3-1 - TOTAL SUSTAIN BMP Features Output**

<b>SUSTAIN BMP Feature Type</b>	<b>Number of Features</b>	<b>Area of BMP Features (Acres)</b>
Permeable Pavement	1,695	88
Bioretention	2,051	96
Infiltration Basin/Trenches	776	70
Vegetated Filter Strips	692	59
Grass Swales	1,732	53
Constructed Wetlands	40	1

Locations of all identified BMP GIS features are presented on the SUSTAIN BMP Features Figure.

## Nine Mile Run - Concept Municipal GSI Projects

Based on the BMP features, 321 concept Municipal GSI Projects were identified covering 41 total acres with a corresponding drainage area delineation of 377 total acres and consisted of the following:

**Table 5.3-2 - Summary of Identified Concept Municipal GSI Projects**

<b>Concept GSI Technology</b>	<b>Number of Projects</b>	<b>GSI Project Area (Acres)</b>	<b>Project Drainage Area (Acres)</b>
Permeable Pavement	46	28	167
Bioretention	264	11	202
Infiltration Basin/Trenches	9	1	6
Vegetated Filter Strips	0	0	0
Grass Swales	1	< 1	< 1
Constructed Wetlands	1	< 1	1

Project statistics including ALCOSAN POC, model subcatchment, BMP type, project area, area of project inside and outside of the public right-of-way, tributary drainage area, and tributary impervious drainage area are provided in the Concept Municipal Projects Table. Locations of all identified Concept Municipal GSI projects are presented in the Concept Municipal GSI Projects Figure (1) and the corresponding delineated tributary drainage areas are presented by BMP in the Individual Project Drainage Area Figures (5).



Nine Mile Run - Concept Commercial/Institutional and Special Case GSI Projects

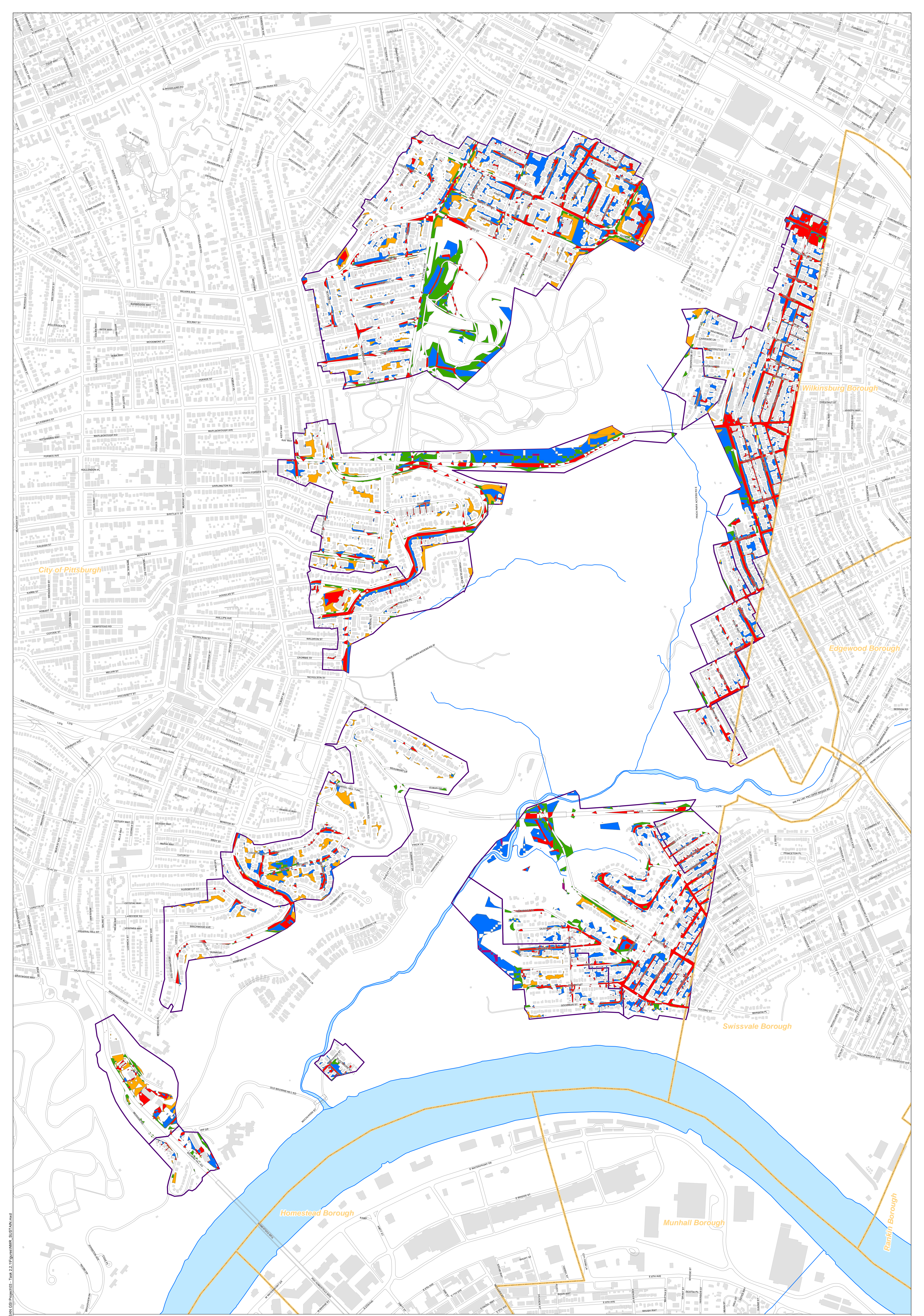
Based on the BMP features, 52 concept Commercial/Institutional and Special Case GSI Projects were identified covering 27 total acres and consisted of the following:

**Table 5.3-3 - Summary of Identified Concept Commercial/Institutional and Special Case GSI Projects**

<b>Concept GSI Technology or Special Case Project Category</b>	<b>Number of Projects</b>	<b>GSI Project Area (Acres)</b>
Commercial/Institutional Permeable Pavement	17	4
Commercial/Institutional Green Roofs	16	4
State Route Permeable Pavement	19	19
Busway Permeable Pavement	0	0
Busway Bioretention	0	0

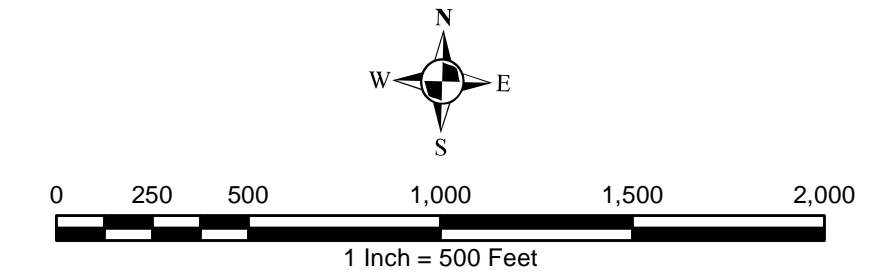
Project statistics including ALCOSAN POC, model subcatchment, BMP type, project area, area of project taxable, exempt, provisionally exempt and in the public right-of-way are provided in Concept Commercial / Institutional GSI Projects Table. Locations of all identified Concept Commercial / Institutional GSI projects are presented in the Concept Commercial / Institutional GSI Projects Figure (1).





File: INPROJ343645 ALCOSAN GSI Project03 - Task 2.11 Figures\BMP\_SUSTAIN.mxd

- Permeable Pavement
- Vegetated Filter Strips
- Combined Sewer Subcatchment
- Bioretention Basin
- Grass Swales
- Municipal Boundaries
- Infiltration Basin / Trench
- Constructed Wetlands



**ALCOSAN GSI Project**  
**Nine Mile Run M-47**  
**SUSTAIN BMP Features**



## Nine Mile Run Concept Municipal Projects: Individual Drainage Areas

October 7, 2013

Revised October 7, 2014

\*Note: The drainage area presented in this table is representative of the individual drainage area tributary to each concept municipal project without any revisions to account for overlap, without engineering judgment revisions applied, and without the drainage areas being clipped to their corresponding model subcatchments.

ALCOSAN POC	Model Subcatchment	Concept Municipal Project UID	BMP Type	Concept Municipal Project Area (acres)	Public ROW or Parcel		Concept Municipal Project Individual Drainage Area (acres)*	Concept Municipal Project Individual Drainage Area (acres)*
					Area of Municipal Project in Public ROW (acres)	Area of Municipal Project outside of Public ROW (acres)		
M-47-00	PWSA-G-9_S1	NINE_1	PP	1.005	1.005	0.000	4.636	1.858
M-47-00	PWSA-G-9_S1	NINE_2	PP	0.269	0.269	0.000	1.010	0.526
M-47-00	PWSA-G-9_S1	NINE_3	PP	0.683	0.683	0.000	7.820	4.006
M-47-00	PWSA-G-9_S1	NINE_6	PP	0.302	0.302	0.000	0.471	0.296
M-47-00	PWSA-G-9_S1	NINE_7	PP	1.058	1.058	0.000	12.824	4.541
M-47-00	PWSA-G-9_S1	NINE_8	PP	0.953	0.953	0.000	14.098	4.951
M-47-00	PWSA-G-9_S1	NINE_9	PP	0.249	0.249	0.000	1.549	0.563
M-47-00	PWSA-G-9_S1	NINE_10	PP	3.725	3.652	0.073	22.148	7.347
M-47-00	PWSA-E-8-8A_S1	NINE_12	PP	0.251	0.251	0.000	0.761	0.544
M-47-00	PWSA-H-11_S1	NINE_14	PP	7.241	7.003	0.238	37.246	17.659
M-47-00	PWSA-H-11_S1	NINE_15	PP	0.810	0.810	0.000	2.498	1.226
M-47-00	PWSA-1ALT_S1	NINE_16	PP	0.065	0.065	0.000	2.343	1.028
M-47-00	PWSA-1ALT_S1	NINE_17	PP	0.136	0.136	0.000	0.252	0.170
M-47-00	PWSA-1ALT_S1	NINE_18	PP	0.046	0.044	0.002	0.188	0.072
M-47-00	PWSA-J-Weir_S1	NINE_19	PP	0.251	0.251	0.000	0.784	0.401
M-47-00	PWSA-J-Weir_S1	NINE_20	PP	0.300	0.300	0.000	0.676	0.357
M-47-00	PWSA-J-Weir_S1	NINE_21	PP	0.034	0.031	0.003	0.077	0.049
M-47-00	PWSA-K-Weir_S1	NINE_22	PP	0.436	0.436	0.000	0.952	0.606
M-47-00	PWSA-K-Weir_S1	NINE_23	PP	0.697	0.697	0.000	2.473	1.188
M-47-00	PWSA-L-Weir_S1	NINE_24	PP	0.199	0.199	0.000	1.525	0.694
M-47-00	PWSA-C-6_S1	NINE_25	PP	0.107	0.107	0.000	1.396	0.498
M-47-00	PWSA-D-5_S1	NINE_26	PP	0.313	0.308	0.005	1.342	0.531
M-47-00	PWSA-D-5_S1	NINE_27	PP	0.429	0.427	0.002	5.558	1.741
M-47-00	PWSA-D-5_S1	NINE_28	PP	0.283	0.282	0.001	1.379	0.658
M-47-00	PWSA-N-4_S1	NINE_29	PP	0.182	0.182	0.000	0.388	0.169
M-47-00	PWSA-N-4_S1	NINE_30	PP	0.495	0.495	0.000	2.254	0.818
M-47-00	PWSA-N-4_S1	NINE_31	PP	0.132	0.132	0.000	0.267	0.122
M-47-00	PWSA-N-4_S1	NINE_32	PP	1.854	1.851	0.003	9.752	4.111

ALCOSAN POC	Model Subcatchment	Concept Municipal Project UID	BMP Type	Concept Municipal Project Area (acres)	Public ROW or Parcel		Concept Municipal Project Individual Drainage Area (acres)*	Concept Municipal Project Individual Project Impervious Drainage Area (acres)*
					Area of Municipal Project in Public ROW (acres)	Area of Municipal Project outside of Public ROW (acres)		
M-47-00	PWSA-N-4_S1	NINE_33	PP	0.216	0.189	0.027	0.794	0.278
M-47-00	PWSA-N-4_S1	NINE_34	PP	0.253	0.253	0.000	0.371	0.300
M-47-00	PWSA-N-4_S1	NINE_35	PP	0.960	0.958	0.002	4.483	1.477
M-47-00	PWSA-N-4_S1	NINE_36	PP	0.355	0.345	0.010	5.186	1.817
M-47-00	PWSA-N-4_S1	NINE_37	PP	0.468	0.466	0.002	1.811	0.747
M-47-00	PWSA-N-4_S1	NINE_38	PP	1.546	1.541	0.005	3.859	1.831
M-47-00	PWSA-N-4_S1	NINE_39	PP	0.133	0.133	0.000	0.146	0.137
M-47-00	PWSA-M-Weir_S1	NINE_40	PP	0.049	0.049	0.000	0.073	0.054
M-47-00	PWSA-M-Weir_S1	NINE_41	PP	0.152	0.152	0.000	0.307	0.188
M-47-00	PWSA-M-Weir_S1	NINE_42	PP	0.322	0.322	0.000	1.204	0.567
M-47-00	PWSA-N-4_S1	NINE_43	PP	0.177	0.170	0.007	0.242	0.189
M-47-00	PWSA-O-12_S1	NINE_44	PP	0.309	0.309	0.000	1.176	0.405
M-47-00	PWSA-O-12_S1	NINE_46	PP	0.065	0.065	0.000	0.193	0.068
M-47-00	PWSA-O-12_S1	NINE_47	PP	0.311	0.311	0.000	2.583	0.918
M-47-00	PWSA-O-12_S1	NINE_48	PP	0.053	0.053	0.000	0.153	0.064
M-47-00	PWSA-O-12_S1	NINE_49	PP	0.195	0.195	0.000	1.092	0.410
M-47-00	PWSA-A-Weir_S1	NINE_50	PP	0.143	0.143	0.000	0.546	0.293
M-47-00	PWSA-O-12_S1	NINE_53	PP	0.131	0.125	0.006	5.651	1.384
M-47-00	PWSA-G-9_S1	NINE_1001	BR	0.431	0.135	0.296	1.113	0.347
M-47-00	PWSA-G-9_S1	NINE_1002	BR	0.028	0.016	0.012	0.308	0.071
M-47-00	PWSA-G-9_S1	NINE_1003	BR	0.013	0.009	0.004	0.189	0.049
M-47-00	PWSA-G-9_S1	NINE_1004	BR	0.017	0.010	0.007	0.831	0.244
M-47-00	PWSA-G-9_S1	NINE_1005	BR	0.032	0.026	0.006	0.211	0.092
M-47-00	PWSA-G-9_S1	NINE_1006	BR	0.009	0.008	0.001	0.100	0.036
M-47-00	PWSA-G-9_S1	NINE_1007	BR	0.010	0.009	0.001	0.571	0.197
M-47-00	PWSA-G-9_S1	NINE_1008	BR	0.028	0.024	0.004	0.069	0.043
M-47-00	PWSA-G-9_S1	NINE_1009	BR	0.031	0.027	0.004	1.175	0.396
M-47-00	PWSA-G-9_S1	NINE_1010	BR	0.043	0.040	0.003	0.263	0.137
M-47-00	PWSA-G-9_S1	NINE_1011	BR	0.044	0.017	0.027	0.710	0.320
M-47-00	PWSA-G-9_S1	NINE_1012	BR	0.026	0.013	0.013	0.394	0.187
M-47-00	PWSA-G-9_S1	NINE_1013	BR	0.006	0.004	0.002	0.450	0.233
M-47-00	PWSA-G-9_S1	NINE_1014	BR	0.030	0.018	0.012	0.266	0.073
M-47-00	PWSA-G-9_S1	NINE_1015	BR	0.018	0.011	0.007	0.203	0.063
M-47-00	PWSA-G-9_S1	NINE_1016	BR	0.009	0.006	0.003	0.054	0.022

ALCOSAN POC	Model Subcatchment	Concept Municipal Project UID	BMP Type	Concept Municipal Project Area (acres)	Public ROW or Parcel		Concept Municipal Project Individual Drainage Area (acres)*	Concept Municipal Project Individual Project Impervious Drainage Area (acres)*
					Area of Municipal Project in Public ROW (acres)	Area of Municipal Project outside of Public ROW (acres)		
M-47-00	PWSA-G-9_S1	NINE_1017	BR	0.010	0.004	0.006	0.053	0.006
M-47-00	PWSA-G-9_S1	NINE_1018	BR	0.014	0.004	0.010	0.023	0.000
M-47-00	PWSA-G-9_S1	NINE_1019	BR	0.015	0.007	0.008	0.130	0.034
M-47-00	PWSA-G-9_S1	NINE_1020	BR	0.037	0.026	0.011	5.104	2.618
M-47-00	PWSA-G-9_S1	NINE_1021	BR	0.041	0.035	0.006	7.043	3.481
M-47-00	PWSA-G-9_S1	NINE_1022	BR	0.069	0.054	0.015	6.051	3.139
M-47-00	PWSA-G-9_S1	NINE_1023	BR	0.022	0.016	0.006	0.869	0.283
M-47-00	PWSA-G-9_S1	NINE_1024	BR	0.055	0.027	0.028	7.300	3.577
M-47-00	PWSA-G-9_S1	NINE_1025	BR	0.045	0.025	0.020	0.760	0.236
M-47-00	PWSA-G-9_S1	NINE_1026	BR	0.056	0.056	0.000	8.283	3.939
M-47-00	PWSA-G-9_S1	NINE_1027	BR	0.071	0.015	0.056	0.956	0.100
M-47-00	PWSA-G-9_S1	NINE_1028	BR	0.093	0.036	0.057	0.466	0.139
M-47-00	PWSA-G-9_S1	NINE_1029	BR	0.078	0.012	0.066	0.634	0.063
M-47-00	PWSA-G-9_S1	NINE_1030	BR	0.039	0.013	0.026	0.106	0.049
M-47-00	PWSA-G-9_S1	NINE_1031	BR	0.021	0.010	0.011	0.155	0.033
M-47-00	PWSA-G-9_S1	NINE_1032	BR	0.068	0.023	0.045	0.115	0.022
M-47-00	PWSA-G-9_S1	NINE_1033	BR	0.053	0.053	0.000	0.127	0.075
M-47-00	PWSA-G-9_S1	NINE_1034	BR	0.168	0.052	0.116	0.665	0.166
M-47-00	PWSA-G-9_S1	NINE_1035	BR	0.156	0.076	0.080	0.913	0.300
M-47-00	PWSA-G-9_S1	NINE_1036	BR	0.249	0.027	0.222	5.178	1.464
M-47-00	PWSA-G-9_S1	NINE_1037	BR	0.065	0.035	0.030	0.086	0.019
M-47-00	PWSA-G-9_S1	NINE_1038	BR	0.065	0.034	0.031	0.397	0.130
M-47-00	PWSA-G-9_S1	NINE_1039	BR	0.052	0.011	0.041	0.312	0.197
M-47-00	PWSA-G-9_S1	NINE_1040	BR	0.027	0.011	0.016	0.363	0.125
M-47-00	PWSA-G-9_S1	NINE_1041	BR	0.071	0.029	0.042	0.466	0.123
M-47-00	PWSA-G-9_S1	NINE_1042	BR	0.049	0.019	0.030	0.250	0.080
M-47-00	PWSA-G-9_S1	NINE_1043	BR	0.103	0.036	0.067	0.161	0.039
M-47-00	PWSA-G-9_S1	NINE_1044	BR	0.033	0.022	0.011	10.357	3.058
M-47-00	PWSA-G-9_S1	NINE_1045	BR	0.018	0.011	0.007	10.736	3.193
M-47-00	PWSA-G-9_S1	NINE_1046	BR	0.018	0.009	0.009	0.125	0.046
M-47-00	PWSA-G-9_S1	NINE_1047	BR	0.018	0.010	0.008	10.848	3.222
M-47-00	PWSA-G-9_S1	NINE_1048	BR	0.033	0.018	0.015	0.293	0.139
M-47-00	PWSA-G-9_S1	NINE_1049	BR	0.025	0.013	0.012	0.694	0.321
M-47-00	PWSA-G-9_S1	NINE_1050	BR	0.019	0.011	0.008	1.025	0.368

ALCOSAN POC	Model Subcatchment	Concept Municipal Project UID	BMP Type	Concept Municipal Project Area (acres)	Public ROW or Parcel		Concept Municipal Project Individual Drainage Area (acres)*	Concept Municipal Project Individual Project Impervious Drainage Area (acres)*
					Area of Municipal Project in Public ROW (acres)	Area of Municipal Project outside of Public ROW (acres)		
M-47-00	PWSA-G-9_S1	NINE_1051	BR	0.017	0.008	0.009	0.960	0.393
M-47-00	PWSA-G-9_S1	NINE_1052	BR	0.015	0.003	0.012	0.241	0.087
M-47-00	PWSA-G-9_S1	NINE_1053	BR	0.024	0.006	0.018	0.650	0.337
M-47-00	PWSA-G-9_S1	NINE_1054	BR	0.081	0.036	0.045	0.440	0.132
M-47-00	PWSA-G-9_S1	NINE_1055	BR	0.047	0.013	0.034	0.935	0.439
M-47-00	PWSA-H-11_S1	NINE_1057	BR	0.015	0.009	0.006	8.998	3.188
M-47-00	PWSA-H-11_S1	NINE_1060	BR	0.017	0.005	0.012	0.288	0.261
M-47-00	PWSA-H-11_S1	NINE_1061	BR	0.036	0.019	0.017	0.407	0.293
M-47-00	PWSA-H-11_S1	NINE_1062	BR	0.034	0.021	0.013	0.520	0.305
M-47-00	PWSA-H-11_S1	NINE_1063	BR	0.029	0.023	0.006	0.096	0.038
M-47-00	PWSA-H-11_S1	NINE_1064	BR	0.035	0.034	0.001	0.545	0.281
M-47-00	PWSA-H-11_S1	NINE_1065	BR	0.053	0.016	0.037	0.189	0.071
M-47-00	PWSA-H-11_S1	NINE_1066	BR	0.060	0.025	0.035	0.073	0.030
M-47-00	PWSA-H-11_S1	NINE_1067	BR	0.019	0.014	0.005	0.834	0.492
M-47-00	PWSA-H-11_S1	NINE_1068	BR	0.016	0.011	0.005	1.263	0.629
M-47-00	PWSA-H-11_S1	NINE_1069	BR	0.062	0.043	0.019	2.245	1.172
M-47-00	PWSA-H-11_S1	NINE_1070	BR	0.018	0.009	0.009	0.259	0.150
M-47-00	PWSA-H-11_S1	NINE_1073	BR	0.115	0.054	0.061	0.271	0.112
M-47-00	PWSA-H-11_S1	NINE_1074	BR	0.020	0.018	0.002	0.070	0.037
M-47-00	PWSA-H-11_S1	NINE_1075	BR	0.040	0.011	0.029	0.302	0.088
M-47-00	PWSA-H-11_S1	NINE_1076	BR	0.028	0.016	0.012	0.123	0.049
M-47-00	PWSA-H-11_S1	NINE_1077	BR	0.023	0.021	0.002	0.162	0.077
M-47-00	PWSA-H-11_S1	NINE_1078	BR	0.026	0.021	0.005	0.366	0.204
M-47-00	PWSA-H-11_S1	NINE_1079	BR	0.023	0.014	0.009	0.090	0.019
M-47-00	PWSA-H-11_S1	NINE_1081	BR	0.023	0.010	0.013	0.571	0.233
M-47-00	PWSA-H-11_S1	NINE_1082	BR	0.072	0.037	0.035	0.269	0.146
M-47-00	PWSA-H-11_S1	NINE_1083	BR	0.050	0.028	0.022	0.350	0.146
M-47-00	PWSA-H-11_S1	NINE_1084	BR	0.026	0.017	0.009	0.191	0.082
M-47-00	PWSA-H-11_S1	NINE_1085	BR	0.017	0.010	0.007	0.302	0.134
M-47-00	PWSA-H-11_S1	NINE_1086	BR	0.018	0.013	0.005	0.148	0.069
M-47-00	PWSA-H-11_S1	NINE_1087	BR	0.023	0.017	0.006	0.254	0.121
M-47-00	PWSA-H-11_S1	NINE_1088	BR	0.029	0.018	0.011	0.605	0.204
M-47-00	PWSA-H-11_S1	NINE_1089	BR	0.008	0.006	0.002	0.015	0.002
M-47-00	PWSA-H-11_S1	NINE_1090	BR	0.021	0.008	0.013	0.559	0.311

ALCOSAN POC	Model Subcatchment	Concept Municipal Project UID	BMP Type	Concept Municipal Project Area (acres)	Public ROW or Parcel		Concept Municipal Project Individual Drainage Area (acres)*	Concept Municipal Project Individual Project Impervious Drainage Area (acres)*
					Area of Municipal Project in Public ROW (acres)	Area of Municipal Project outside of Public ROW (acres)		
M-47-00	PWSA-H-11_S1	NINE_1091	BR	0.068	0.028	0.040	0.507	0.233
M-47-00	PWSA-H-11_S1	NINE_1092	BR	0.021	0.011	0.010	0.286	0.107
M-47-00	PWSA-H-11_S1	NINE_1093	BR	0.028	0.011	0.017	0.127	0.043
M-47-00	PWSA-H-11_S1	NINE_1094	BR	0.010	0.007	0.003	0.134	0.082
M-47-00	PWSA-H-11_S1	NINE_1095	BR	0.021	0.015	0.006	0.308	0.170
M-47-00	PWSA-H-11_S1	NINE_1096	BR	0.049	0.027	0.022	0.520	0.223
M-47-00	PWSA-H-11_S1	NINE_1097	BR	0.016	0.008	0.008	1.497	0.735
M-47-00	PWSA-H-11_S1	NINE_1098	BR	0.044	0.029	0.015	1.415	0.697
M-47-00	PWSA-H-11_S1	NINE_1099	BR	0.022	0.012	0.010	0.849	0.478
M-47-00	PWSA-H-11_S1	NINE_1100	BR	0.028	0.000	0.028	0.562	0.197
M-47-00	PWSA-I-10_S1	NINE_1101	BR	0.026	0.000	0.026	0.099	0.023
M-47-00	PWSA-H-11_S1	NINE_1102	BR	0.024	0.014	0.010	0.115	0.053
M-47-00	PWSA-H-11_S1	NINE_1103	BR	0.061	0.055	0.006	0.261	0.109
M-47-00	PWSA-H-11_S1	NINE_1105	BR	0.007	0.005	0.002	0.055	0.033
M-47-00	PWSA-H-11_S1	NINE_1106	BR	0.019	0.012	0.007	0.149	0.071
M-47-00	PWSA-H-11_S1	NINE_1107	BR	0.048	0.026	0.022	0.104	0.030
M-47-00	PWSA-H-11_S1	NINE_1108	BR	0.049	0.022	0.027	0.942	0.461
M-47-00	PWSA-H-11_S1	NINE_1109	BR	0.021	0.015	0.006	0.624	0.310
M-47-00	PWSA-H-11_S1	NINE_1110	BR	0.066	0.039	0.027	0.413	0.246
M-47-00	PWSA-N-4_S1	NINE_1111	BR	0.009	0.004	0.005	0.871	0.206
M-47-00	PWSA-H-11_S1	NINE_1112	BR	0.072	0.032	0.040	0.395	0.241
M-47-00	PWSA-H-11_S1	NINE_1113	BR	0.066	0.039	0.027	1.595	0.671
M-47-00	PWSA-H-11_S1	NINE_1114	BR	0.053	0.027	0.026	1.970	0.810
M-47-00	PWSA-H-11_S1	NINE_1115	BR	0.024	0.011	0.013	0.580	0.303
M-47-00	PWSA-H-11_S1	NINE_1116	BR	0.021	0.014	0.007	0.197	0.053
M-47-00	PWSA-H-11_S1	NINE_1117	BR	0.037	0.019	0.018	0.101	0.025
M-47-00	PWSA-H-11_S1	NINE_1118	BR	0.038	0.019	0.019	0.315	0.112
M-47-00	PWSA-H-11_S1	NINE_1119	BR	0.027	0.017	0.010	0.728	0.373
M-47-00	PWSA-H-11_S1	NINE_1120	BR	0.019	0.011	0.008	0.084	0.027
M-47-00	PWSA-H-11_S1	NINE_1121	BR	0.072	0.032	0.040	0.368	0.130
M-47-00	PWSA-H-11_S1	NINE_1122	BR	0.019	0.002	0.017	0.082	0.028
M-47-00	PWSA-H-11_S1	NINE_1123	BR	0.020	0.016	0.004	0.195	0.110
M-47-00	PWSA-H-11_S1	NINE_1124	BR	0.031	0.016	0.015	0.540	0.272
M-47-00	PWSA-H-11_S1	NINE_1126	BR	0.058	0.034	0.024	0.248	0.119

ALCOSAN POC	Model Subcatchment	Concept Municipal Project UID	BMP Type	Concept Municipal Project Area (acres)	Public ROW or Parcel		Concept Municipal Project Individual Drainage Area (acres)*	Concept Municipal Project Individual Project Impervious Drainage Area (acres)*
					Area of Municipal Project in Public ROW (acres)	Area of Municipal Project outside of Public ROW (acres)		
M-47-00	PWSA-H-11_S1	NINE_1127	BR	0.065	0.041	0.024	0.318	0.128
M-47-00	PWSA-H-11_S1	NINE_1128	BR	0.026	0.015	0.011	0.085	0.023
M-47-00	PWSA-H-11_S1	NINE_1129	BR	0.026	0.013	0.013	0.521	0.222
M-47-00	PWSA-H-11_S1	NINE_1130	BR	0.020	0.010	0.010	0.130	0.061
M-47-00	PWSA-H-11_S1	NINE_1131	BR	0.096	0.049	0.047	0.789	0.352
M-47-00	PWSA-H-11_S1	NINE_1132	BR	0.014	0.008	0.006	0.041	0.005
M-47-00	PWSA-H-11_S1	NINE_1133	BR	0.104	0.036	0.068	0.893	0.385
M-47-00	PWSA-1ALT_S1	NINE_1134	BR	0.041	0.031	0.010	0.748	0.355
M-47-00	PWSA-K-Weir_S1	NINE_1135	BR	0.015	0.014	0.001	0.403	0.091
M-47-00	PWSA-L-Weir_S1	NINE_1136	BR	0.013	0.001	0.012	0.019	0.002
M-47-00	PWSA-L-Weir_S1	NINE_1137	BR	0.018	0.014	0.004	0.458	0.148
M-47-00	PWSA-J-Weir_S1	NINE_1139	BR	0.035	0.019	0.016	0.042	0.011
M-47-00	PWSA-H-11_S1	NINE_1142	BR	0.037	0.025	0.012	0.528	0.230
M-47-00	PWSA-H-11_S1	NINE_1143	BR	0.081	0.043	0.038	0.530	0.247
M-47-00	PWSA-H-11_S1	NINE_1144	BR	0.035	0.009	0.026	0.104	0.048
M-47-00	PWSA-H-11_S1	NINE_1145	BR	0.016	0.007	0.009	0.184	0.049
M-47-00	PWSA-K-Weir_S1	NINE_1149	BR	0.016	0.005	0.011	0.035	0.015
M-47-00	PWSA-K-Weir_S1	NINE_1150	BR	0.020	0.011	0.009	0.059	0.009
M-47-00	PWSA-H-11_S1	NINE_1151	BR	0.044	0.018	0.026	0.265	0.107
M-47-00	PWSA-H-11_S1	NINE_1152	BR	0.074	0.025	0.049	0.124	0.021
M-47-00	PWSA-H-11_S1	NINE_1153	BR	0.023	0.003	0.020	0.071	0.018
M-47-00	PWSA-N-4_S1	NINE_1154	BR	0.023	0.014	0.009	0.738	0.186
M-47-00	PWSA-K-Weir_S1	NINE_1155	BR	0.118	0.072	0.046	0.247	0.109
M-47-00	PWSA-E-8-8A_S1	NINE_1156	BR	0.034	0.016	0.018	0.153	0.044
M-47-00	PWSA-E-8-8A_S1	NINE_1157	BR	0.032	0.016	0.016	0.185	0.102
M-47-00	PWSA-E-8-8A_S1	NINE_1158	BR	0.028	0.006	0.022	0.099	0.037
M-47-00	PWSA-E-8-8A_S1	NINE_1159	BR	0.069	0.004	0.065	2.094	1.166
M-47-00	PWSA-E-8-8A_S1	NINE_1160	BR	0.235	0.050	0.185	0.677	0.332
M-47-00	PWSA-F-9_S1	NINE_1161	BR	0.024	0.001	0.023	0.067	0.007
M-47-00	PWSA-F-9_S1	NINE_1162	BR	0.034	0.010	0.024	0.060	0.006
M-47-00	PWSA-F-9_S1	NINE_1163	BR	0.020	0.008	0.012	0.028	0.003
M-47-00	PWSA-F-9_S1	NINE_1164	BR	0.021	0.011	0.010	0.299	0.205
M-47-00	PWSA-F-9_S1	NINE_1165	BR	0.046	0.026	0.020	0.553	0.348
M-47-00	PWSA-F-9_S1	NINE_1166	BR	0.024	0.012	0.012	0.638	0.376



ALCOSAN POC	Model Subcatchment	Concept Municipal Project UID	BMP Type	Concept Municipal Project Area (acres)	Public ROW or Parcel		Concept Municipal Project Individual Drainage Area (acres)*	Concept Municipal Project Individual Project Impervious Drainage Area (acres)*
					Area of Municipal Project in Public ROW (acres)	Area of Municipal Project outside of Public ROW (acres)		
M-47-00	PWSA-F-9_S1	NINE_1167	BR	0.035	0.016	0.019	0.810	0.448
M-47-00	PWSA-F-9_S1	NINE_1168	BR	0.034	0.018	0.016	0.810	0.440
M-47-00	PWSA-F-9_S1	NINE_1169	BR	0.111	0.018	0.093	0.305	0.138
M-47-00	PWSA-F-9_S1	NINE_1170	BR	0.047	0.015	0.032	0.183	0.091
M-47-00	PWSA-F-9_S1	NINE_1171	BR	0.047	0.014	0.033	0.750	0.234
M-47-00	PWSA-F-9_S1	NINE_1173	BR	0.007	0.003	0.004	1.037	0.347
M-47-00	PWSA-F-9_S1	NINE_1174	BR	0.075	0.072	0.003	0.410	0.233
M-47-00	PWSA-N-4_S1	NINE_1175	BR	0.026	0.023	0.003	1.023	0.261
M-47-00	PWSA-N-4_S1	NINE_1176	BR	0.014	0.010	0.004	0.672	0.168
M-47-00	PWSA-N-4_S1	NINE_1177	BR	0.015	0.015	0.000	0.215	0.070
M-47-00	PWSA-N-4_S1	NINE_1178	BR	0.008	0.008	0.000	0.314	0.090
M-47-00	PWSA-N-4_S1	NINE_1180	BR	0.020	0.020	0.000	0.129	0.028
M-47-00	PWSA-A-Weir_S1	NINE_1181	BR	0.094	0.013	0.081	0.199	0.012
M-47-00	PWSA-A-Weir_S1	NINE_1182	BR	0.033	0.010	0.023	0.590	0.112
M-47-00	PWSA-A-Weir_S1	NINE_1183	BR	0.040	0.015	0.025	0.669	0.116
M-47-00	PWSA-A-Weir_S1	NINE_1184	BR	0.010	0.003	0.007	1.287	0.120
M-47-00	PWSA-B-Lower_S1	NINE_1185	BR	1.032	0.365	0.667	1.074	0.207
M-47-00	PWSA-B-Lower_S1	NINE_1186	BR	0.141	0.106	0.035	0.655	0.143
M-47-00	PWSA-N-4_S1	NINE_1187	BR	0.006	0.006	0.000	0.011	0.004
M-47-00	PWSA-C-6_S1	NINE_1188	BR	0.022	0.013	0.009	0.032	0.001
M-47-00	PWSA-C-6_S1	NINE_1189	BR	0.014	0.005	0.009	0.871	0.252
M-47-00	PWSA-C-6_S1	NINE_1190	BR	0.053	0.013	0.040	0.255	0.154
M-47-00	PWSA-C-6_S1	NINE_1191	BR	0.042	0.011	0.031	0.327	0.169
M-47-00	PWSA-C-6_S1	NINE_1192	BR	0.055	0.041	0.014	0.263	0.101
M-47-00	PWSA-C-6_S1	NINE_1193	BR	0.011	0.008	0.003	0.034	0.010
M-47-00	PWSA-C-6_S1	NINE_1194	BR	0.032	0.010	0.022	0.858	0.284
M-47-00	PWSA-D-5_S1	NINE_1195	BR	0.027	0.007	0.020	0.054	0.031
M-47-00	PWSA-D-5_S1	NINE_1196	BR	0.009	0.008	0.001	0.106	0.057
M-47-00	PWSA-D-5_S1	NINE_1197	BR	0.041	0.025	0.016	0.194	0.069
M-47-00	PWSA-D-5_S1	NINE_1198	BR	0.013	0.004	0.009	1.278	0.400
M-47-00	PWSA-D-5_S1	NINE_1199	BR	0.008	0.008	0.000	0.788	0.300
M-47-00	PWSA-D-5_S1	NINE_1200	BR	0.013	0.013	0.000	0.069	0.030
M-47-00	PWSA-D-5_S1	NINE_1201	BR	0.013	0.006	0.007	1.376	0.441
M-47-00	PWSA-D-5_S1	NINE_1202	BR	0.083	0.066	0.017	1.246	0.341

ALCOSAN POC	Model Subcatchment	Concept Municipal Project UID	BMP Type	Concept Municipal Project Area (acres)	Public ROW or Parcel		Concept Municipal Project Individual Drainage Area (acres)*	Concept Municipal Project Individual Drainage Area (acres)*
					Area of Municipal Project in Public ROW (acres)	Area of Municipal Project outside of Public ROW (acres)		
M-47-00	PWSA-D-5_S1	NINE_1203	BR	0.011	0.011	0.000	0.111	0.048
M-47-00	PWSA-D-5_S1	NINE_1204	BR	0.007	0.007	0.000	3.039	0.659
M-47-00	PWSA-D-5_S1	NINE_1205	BR	0.066	0.054	0.012	0.414	0.186
M-47-00	PWSA-D-5_S1	NINE_1206	BR	0.004	0.003	0.001	0.068	0.034
M-47-00	PWSA-D-5_S1	NINE_1207	BR	0.010	0.004	0.006	1.040	0.302
M-47-00	PWSA-D-5_S1	NINE_1208	BR	0.021	0.014	0.007	0.207	0.131
M-47-00	PWSA-D-5_S1	NINE_1209	BR	0.009	0.007	0.002	0.279	0.094
M-47-00	PWSA-D-5_S1	NINE_1210	BR	0.015	0.012	0.003	0.544	0.334
M-47-00	PWSA-D-5_S1	NINE_1211	BR	0.040	0.021	0.019	0.245	0.132
M-47-00	PWSA-O-12_S1	NINE_1212	BR	0.022	0.009	0.013	0.439	0.167
M-47-00	PWSA-O-12_S1	NINE_1213	BR	0.008	0.008	0.000	0.847	0.299
M-47-00	PWSA-O-12_S1	NINE_1214	BR	0.023	0.022	0.001	0.303	0.154
M-47-00	PWSA-O-12_S1	NINE_1215	BR	0.011	0.009	0.002	0.329	0.158
M-47-00	PWSA-O-12_S1	NINE_1216	BR	0.029	0.024	0.005	0.347	0.132
M-47-00	PWSA-O-12_S1	NINE_1217	BR	0.009	0.009	0.000	0.378	0.192
M-47-00	PWSA-O-12_S1	NINE_1218	BR	0.024	0.024	0.000	0.159	0.067
M-47-00	PWSA-O-12_S1	NINE_1219	BR	0.021	0.021	0.000	0.974	0.375
M-47-00	PWSA-O-12_S1	NINE_1220	BR	0.007	0.007	0.000	1.349	0.452
M-47-00	PWSA-O-12_S1	NINE_1221	BR	0.011	0.011	0.000	0.388	0.187
M-47-00	PWSA-O-12_S1	NINE_1222	BR	0.017	0.017	0.000	0.342	0.156
M-47-00	PWSA-O-12_S1	NINE_1223	BR	0.026	0.022	0.004	0.107	0.044
M-47-00	PWSA-O-12_S1	NINE_1224	BR	0.018	0.017	0.001	0.157	0.058
M-47-00	PWSA-O-12_S1	NINE_1225	BR	0.018	0.013	0.005	0.213	0.073
M-47-00	PWSA-O-12_S1	NINE_1226	BR	0.024	0.018	0.006	0.385	0.136
M-47-00	PWSA-O-12_S1	NINE_1227	BR	0.017	0.017	0.000	0.495	0.179
M-47-00	PWSA-O-12_S1	NINE_1228	BR	0.043	0.043	0.000	0.404	0.154
M-47-00	PWSA-N-4_S1	NINE_1229	BR	0.115	0.000	0.115	0.141	0.000
M-47-00	PWSA-N-4_S1	NINE_1230	BR	0.285	0.000	0.285	1.224	0.000
M-47-00	PWSA-N-4_S1	NINE_1231	BR	0.358	0.000	0.358	0.530	0.000
M-47-00	PWSA-N-4_S1	NINE_1232	BR	0.113	0.025	0.088	0.419	0.019
M-47-00	PWSA-N-4_S1	NINE_1233	BR	0.011	0.009	0.002	0.944	0.226
M-47-00	PWSA-N-4_S1	NINE_1235	BR	0.020	0.011	0.009	0.534	0.216
M-47-00	PWSA-N-4_S1	NINE_1236	BR	0.010	0.006	0.004	0.166	0.054
M-47-00	PWSA-N-4_S1	NINE_1237	BR	0.043	0.033	0.010	0.432	0.116

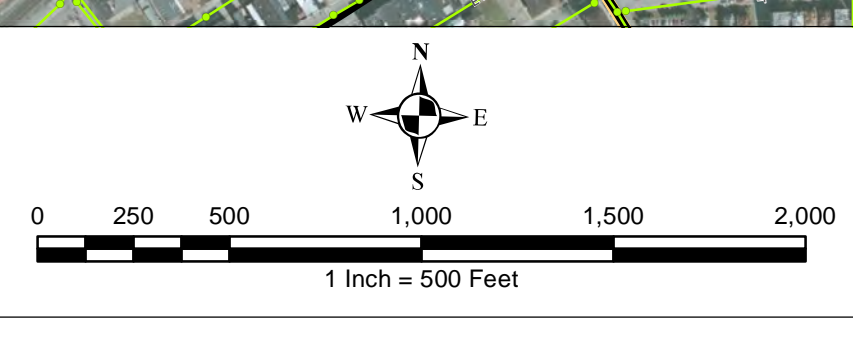
ALCOSAN POC	Model Subcatchment	Concept Municipal Project UID	BMP Type	Concept Municipal Project Area (acres)	Public ROW or Parcel		Concept Municipal Project Individual Drainage Area (acres)*	Concept Municipal Project Individual Project Impervious Drainage Area (acres)*
					Area of Municipal Project in Public ROW (acres)	Area of Municipal Project outside of Public ROW (acres)		
M-47-00	PWSA-N-4_S1	NINE_1238	BR	0.017	0.015	0.002	0.337	0.103
M-47-00	PWSA-N-4_S1	NINE_1239	BR	0.010	0.004	0.006	0.449	0.184
M-47-00	PWSA-N-4_S1	NINE_1240	BR	0.058	0.046	0.012	1.097	0.362
M-47-00	PWSA-N-4_S1	NINE_1241	BR	0.032	0.027	0.005	0.882	0.297
M-47-00	PWSA-N-4_S1	NINE_1242	BR	0.025	0.016	0.009	0.110	0.046
M-47-00	PWSA-N-4_S1	NINE_1243	BR	0.014	0.006	0.008	0.110	0.047
M-47-00	PWSA-N-4_S1	NINE_1244	BR	0.007	0.006	0.001	0.463	0.156
M-47-00	PWSA-N-4_S1	NINE_1245	BR	0.015	0.010	0.005	0.371	0.108
M-47-00	PWSA-N-4_S1	NINE_1246	BR	0.033	0.033	0.000	0.159	0.071
M-47-00	PWSA-N-4_S1	NINE_1247	BR	0.009	0.006	0.003	0.130	0.055
M-47-00	PWSA-N-4_S1	NINE_1248	BR	0.025	0.013	0.012	0.117	0.048
M-47-00	PWSA-N-4_S1	NINE_1249	BR	0.012	0.007	0.005	0.026	0.012
M-47-00	PWSA-N-4_S1	NINE_1250	BR	0.034	0.022	0.012	0.147	0.085
M-47-00	PWSA-N-4_S1	NINE_1251	BR	0.010	0.010	0.000	0.078	0.027
M-47-00	PWSA-O-12_S1	NINE_1252	BR	0.010	0.010	0.000	0.114	0.040
M-47-00	PWSA-N-4_S1	NINE_1253	BR	0.021	0.015	0.006	0.265	0.114
M-47-00	PWSA-N-4_S1	NINE_1254	BR	0.008	0.007	0.001	0.224	0.116
M-47-00	PWSA-N-4_S1	NINE_1255	BR	0.028	0.025	0.003	0.261	0.092
M-47-00	PWSA-N-4_S1	NINE_1256	BR	0.011	0.004	0.007	0.137	0.020
M-47-00	PWSA-N-4_S1	NINE_1257	BR	0.020	0.009	0.011	0.541	0.152
M-47-00	PWSA-N-4_S1	NINE_1258	BR	0.023	0.015	0.008	0.033	0.013
M-47-00	PWSA-N-4_S1	NINE_1259	BR	0.012	0.005	0.007	0.130	0.057
M-47-00	PWSA-M-Weir_S1	NINE_1260	BR	0.011	0.003	0.008	0.128	0.076
M-47-00	PWSA-M-Weir_S1	NINE_1261	BR	0.051	0.051	0.000	0.191	0.075
M-47-00	PWSA-M-Weir_S1	NINE_1262	BR	0.018	0.018	0.000	0.150	0.064
M-47-00	PWSA-M-Weir_S1	NINE_1263	BR	0.027	0.027	0.000	0.274	0.106
M-47-00	PWSA-M-Weir_S1	NINE_1264	BR	0.010	0.010	0.000	0.141	0.041
M-47-00	PWSA-M-Weir_S1	NINE_1265	BR	0.009	0.003	0.006	0.285	0.138
M-47-00	PWSA-M-Weir_S1	NINE_1266	BR	0.015	0.006	0.009	0.104	0.059
M-47-00	PWSA-M-Weir_S1	NINE_1267	BR	0.054	0.034	0.020	0.290	0.120
M-47-00	PWSA-M-Weir_S1	NINE_1268	BR	0.017	0.015	0.002	0.207	0.105
M-47-00	PWSA-N-4_S1	NINE_1269	BR	0.029	0.016	0.013	0.129	0.041
M-47-00	PWSA-N-4_S1	NINE_1270	BR	0.015	0.009	0.006	0.327	0.060
M-47-00	PWSA-N-4_S1	NINE_1271	BR	0.017	0.009	0.008	1.672	0.424

ALCOSAN POC	Model Subcatchment	Concept Municipal Project UID	BMP Type	Concept Municipal Project Area (acres)	Public ROW or Parcel		Concept Municipal Project Individual Drainage Area (acres)*	Concept Municipal Project Individual Project Impervious Drainage Area (acres)*
					Area of Municipal Project in Public ROW (acres)	Area of Municipal Project outside of Public ROW (acres)		
M-47-00	PWSA-N-4_S1	NINE_1272	BR	0.011	0.011	0.000	1.745	0.440
M-47-00	PWSA-N-4_S1	NINE_1273	BR	0.029	0.014	0.015	1.603	0.409
M-47-00	PWSA-N-4_S1	NINE_1274	BR	0.010	0.005	0.005	1.494	0.362
M-47-00	PWSA-N-4_S1	NINE_1275	BR	0.039	0.023	0.016	1.422	0.349
M-47-00	PWSA-N-4_S1	NINE_1276	BR	0.022	0.017	0.005	1.225	0.296
M-47-00	PWSA-N-4_S1	NINE_1277	BR	0.036	0.028	0.008	1.064	0.266
M-47-00	PWSA-N-4_S1	NINE_1278	BR	0.025	0.016	0.009	0.074	0.020
M-47-00	PWSA-N-4_S1	NINE_1279	BR	0.026	0.026	0.000	0.069	0.007
M-47-00	PWSA-D-5_S1	NINE_1280	BR	0.063	0.021	0.042	5.701	1.574
M-47-00	PWSA-N-4_S1	NINE_1281	BR	0.021	0.016	0.005	0.213	0.074
M-47-00	PWSA-G-9_S1	NINE_2001	IB	0.146	0.075	0.071	0.657	0.185
M-47-00	PWSA-G-9_S1	NINE_2002	IB	0.046	0.023	0.023	0.699	0.210
M-47-00	PWSA-E-8-8A_S1	NINE_2003	IB	0.115	0.051	0.064	1.143	0.614
M-47-00	PWSA-F-9_S1	NINE_2004	IB	0.067	0.000	0.067	0.268	0.067
M-47-00	PWSA-F-9_S1	NINE_2005	IB	0.066	0.000	0.066	0.482	0.104
M-47-00	PWSA-F-9_S1	NINE_2006	IB	0.043	0.004	0.039	1.305	0.941
M-47-00	PWSA-H-11_S1	NINE_2007	IB	0.131	0.003	0.128	1.373	0.094
M-47-00	PWSA-J-Weir_S1	NINE_2008	IB	0.032	0.032	0.000	0.168	0.062
M-47-00	PWSA-B-Lower_S1	NINE_2009	IB	0.192	0.036	0.156	0.286	0.059
M-47-00	PWSA-E-8-8A_S1	NINE_3001	GS	0.280	0.076	0.204	0.365	0.112
M-47-00	PWSA-N-4_S1	NINE_5001	CW	0.144	0.000	0.144	1.458	0.033





- ★ ALCOSAN Structures
- ALCOSAN Shallow-Cut Interceptor
- ALCOSAN Deep Tunnel Interceptor
- One Overall Manholes
- One Overall Sewerlines
- Constructed Wetlands
- Infiltration Basin
- Bioretention
- Grass Swales
- Permeable Pavement
- Combined Sewer Subcatchment
- State Roads
- Municipal Boundaries

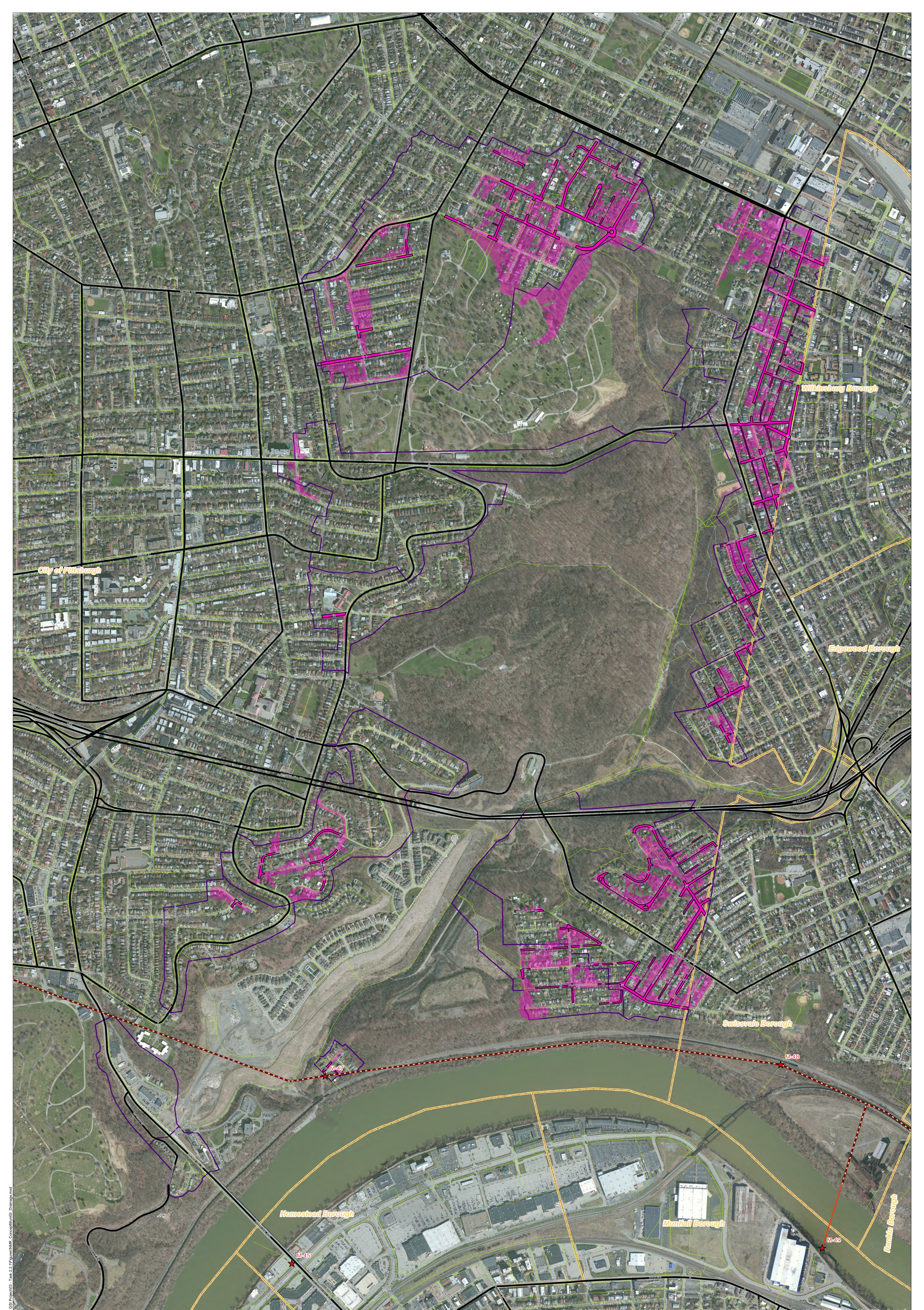


**ALCOSAN GSI Project**  
**Nine Mile Run (M-47)**  
**Concept Municipal GSI Projects**

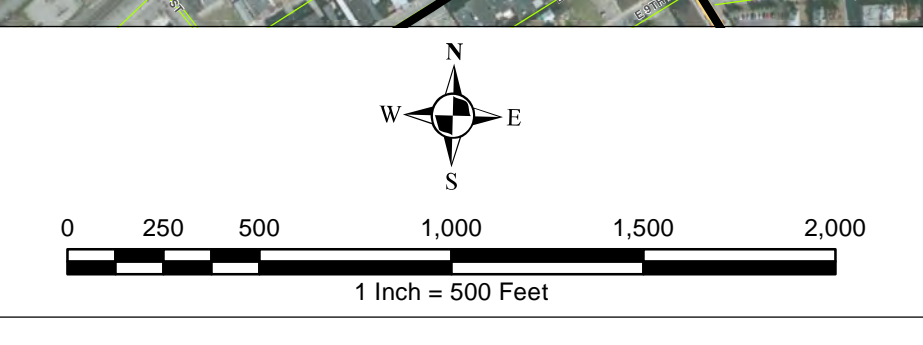
Path: I:\P\03\34\34\05 ALCOSAN GSI Project\03 - Task 2.1\Figures\Nine Mile Run\M47Pw-BMP\M47\_ConceptMunicipalGSIProjects.mxd

Source: Esri, DeLorme, GeoEye, (GeoEye), IGN, NOAA, Swisstopo, USDA, (USDA), AeroGRID, IGN, Esri, (Swisstopo), and the GIS User Community





- ★ ALCOSAN Structures
- ALCOSAN Shallow-Cut Interceptor
- - - ALCOSAN Deep Tunnel Interceptor
- One Overall Manholes
- One Overall Sewerlines
- Permeable Pavement
- Permeable Pavement Drainage Area
- Combined Sewer Subcatchment
- State Roads
- Municipal Boundaries



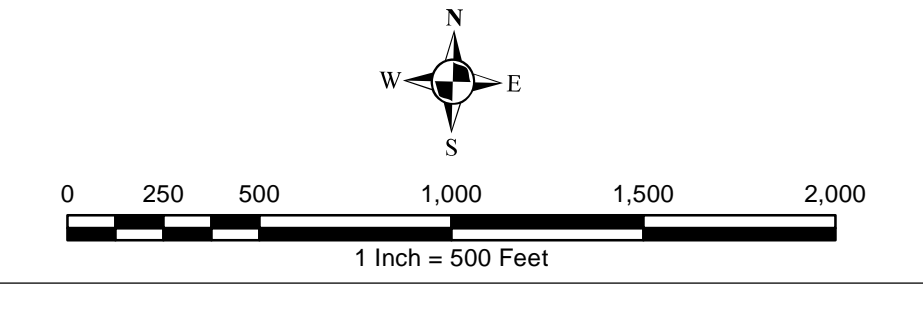
**ALCOSAN GSI Project**  
**Nine Mile Run (M-47)**  
**Concept Municipal Permeable Pavement GSI Projects**  
**Individual Project Drainage Areas**

File: I:\P\03\34\34\05 ALCOSAN GSI Project\03 - Task 2.1\Figures\MAPR\_ConceptMap\GSI\_Drainage.mxd





- ★ ALCOSAN Structures
- ALCOSAN Shallow-Cut Interceptor
- ALCOSAN Deep Tunnel Interceptor
- One Overall Manholes
- One Overall Sewerlines
- Bioretention
- Bioretention Drainage Area
- Combined Sewer Subcatchment
- State Roads
- Municipal Boundaries



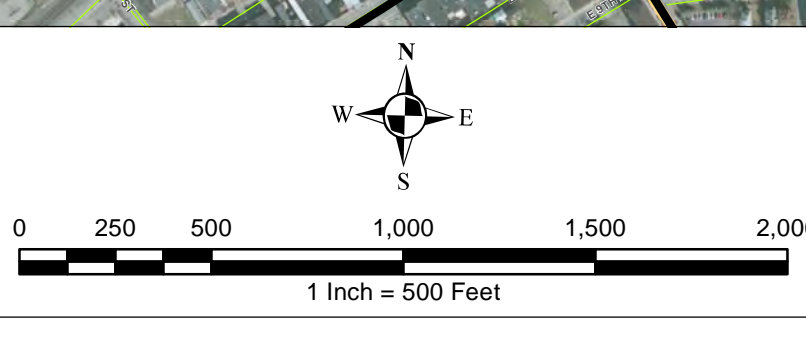
**ALCOSAN GSI Project**  
**Nine Mile Run (M-47)**  
**Concept Municipal Bioretention GSI Projects**  
**Individual Project Drainage Areas**

File: I:\PROJECTS\ALCOSAN GSI Project\03 - Task 2.1\Figures\AMR\_Concept\GSI\_Drainage.mxd  
 Date: 11/15/2023 10:54:06 AM  
 User: jgibson





- ★ ALCOSAN Structures
- ALCOSAN Shallow-Cut Interceptor
- - - ALCOSAN Deep Tunnel Interceptor
- One Overall Manholes
- One Overall Sewerlines
- Infiltration Basin
- Infiltration Basin Drainage Area
- Combined Sewer Subcatchment
- State Roads
- Municipal Boundaries



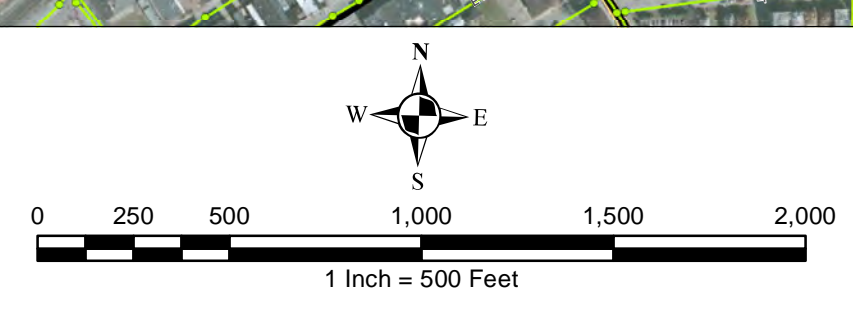
## ALCOSAN GSI Project Nine Mile Run (M-47) Concept Municipal Infiltration Basin GSI Projects Individual Project Drainage Areas

P:\MIR\ALCOSAN\GSI\Project03 - Task 2.1\Figures\AMR\_Concept\GSI\_Drainage.mxd





- ★ ALCOSAN Structures
- ALCOSAN Shallow-Cut Interceptor
- ALCOSAN Deep Tunnel Interceptor
- One Overall Manholes
- One Overall Sewerlines
- Grass Swales
- Grass Swales Drainage Areas
- Combined Sewer Subcatchment
- State Roads
- Municipal Boundaries



**ALCOSAN GSI Project**  
**Nine Mile Run (M-47)**  
**Concept Municipal Grass Swales GSI Projects**  
**Individual Project Drainage Areas**

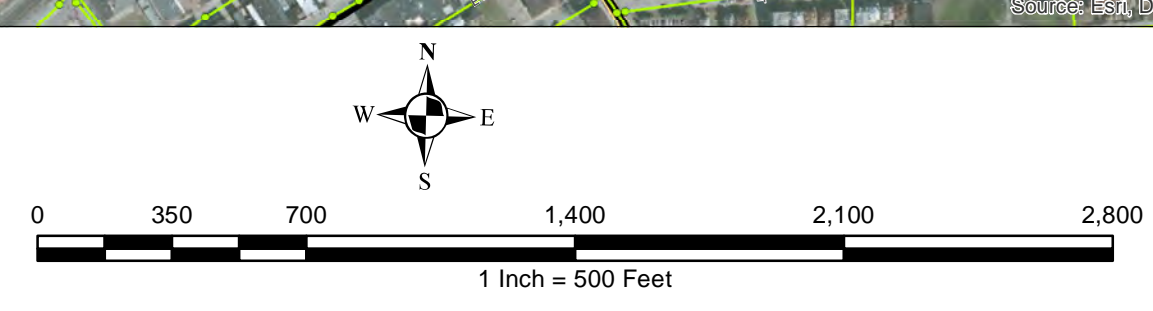
File: I:\PROJECTS\ALCOSAN GSI Project\03 - Task 2.1\Figures\Nine Mile Run\M47Pac\_BMPNUR\_MAT\_GrassSwales\_IndividualDrainageAreas.mxd

Sources: Esri, DeLorme, GeoEye, Earthstar, Heritage, Geoportals, CNES/Airbus DS, USDA, USGS, AeroGRID, IGN, Esri, Swisstopo, and the GIS User Community





- ★ ALCOSAN Structures
- Constructed Wetlands
- ALCOSAN Shallow-Cut Interceptor
- Constructed Wetlands Drainage Area
- - - ALCOSAN Deep Tunnel Interceptor
- Combined Sewer Subcatchment
- One Overall Manholes
- State Roads
- One Overall Sewerlines
- Municipal Boundaries



**ALCOSAN GSI Project**  
**Nine Mile Run (M-47)**  
 Concept Municipal Constructed Wetlands GSI Projects  
 Individual Project Drainage Areas

File: I:\PROJECTS\ALCOSAN GSI Project\03 - Task 2.1\Figures\Nine Mile Run\M47Pac-BMP\M47Pac-BMP\Wetlands\_IndividualDrainageAreas.mxd  
 Source: Esri, DeLorme, GeoEye, (GeoEye), IGNITE Holdings, CNES/Airbus DS, USDA, USGS, AeroGRID, IGN, Esri, Swirecity, and the GIS User Community



## Nine Mile Run Concept Commercial / Institutional Permeable Pavement, Green Roof, and Special Case GSI Projects: Summary Table

December 24, 2013  
Revised October 10, 2014

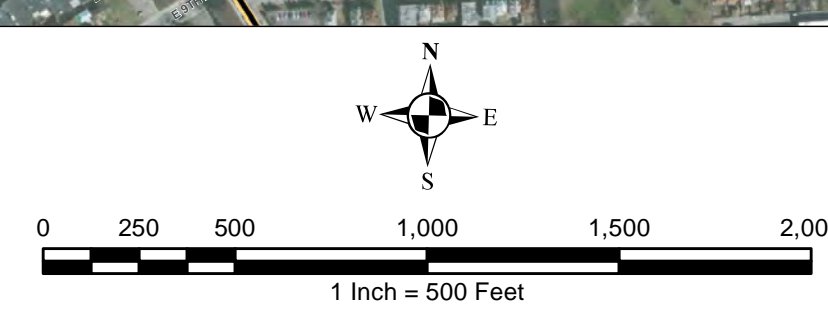
ALCOSAN POC	Model Subcatchment	Concept Comm / Inst Project UID	BMP Type	Concept Municipal Project Area (acres)	Taxable (acres)	Exempt (acres)	Provisionally Exempt (acres)	Public ROW (acres)
M-47-00	PWSA-G-9_S1	NINE_6001	CPP	0.226	0.000	0.226	0.000	0.000
M-47-00	PWSA-G-9_S1	NINE_6002	CPP	0.132	0.000	0.132	0.000	0.000
M-47-00	PWSA-G-9_S1	NINE_6003	CPP	0.603	0.000	0.603	0.000	0.000
M-47-00	PWSA-H-11_S1	NINE_6004	CPP	0.325	0.130	0.193	0.000	0.002
M-47-00	PWSA-H-11_S1	NINE_6005	CPP	0.130	0.124	0.000	0.000	0.006
M-47-00	PWSA-H-11_S1	NINE_6006	CPP	0.212	0.212	0.000	0.000	0.000
M-47-00	PWSA-H-11_S1	NINE_6007	CPP	0.176	0.166	0.000	0.000	0.010
M-47-00	PWSA-H-11_S1	NINE_6008	CPP	0.123	0.123	0.000	0.000	0.000
M-47-00	PWSA-H-11_S1	NINE_6009	CPP	0.203	0.189	0.000	0.000	0.014
M-47-00	PWSA-H-11_S1	NINE_6010	CPP	0.214	0.214	0.000	0.000	0.000
M-47-00	PWSA-N-4_S1	NINE_6011	CPP	0.361	0.001	0.347	0.000	0.013
M-47-00	PWSA-B-Upper_S1	NINE_6012	CPP	0.272	0.272	0.000	0.000	0.000
M-47-00	PWSA-B-Upper_S1	NINE_6013	CPP	0.191	0.191	0.000	0.000	0.000
M-47-00	PWSA-B-Upper_S1	NINE_6014	CPP	0.250	0.250	0.000	0.000	0.000
M-47-00	PWSA-B-Upper_S1	NINE_6015	CPP	0.183	0.183	0.000	0.000	0.000
M-47-00	PWSA-E-8-8A_S1	NINE_6016	CPP	0.337	0.000	0.337	0.000	0.000
M-47-00	PWSA-G-9_S1	NINE_6017	CPP	0.091	0.091	0.000	0.000	0.000
M-47-00	PWSA-F-9_S1	NINE_7001	GR	0.360	0.000	0.360	0.000	0.000
M-47-00	PWSA-F-9_S1	NINE_7002	GR	0.173	0.000	0.173	0.000	0.000
M-47-00	PWSA-B-Upper_S1	NINE_7003	GR	0.265	0.265	0.000	0.000	0.000
M-47-00	PWSA-G-9_S1	NINE_7004	GR	0.328	0.000	0.328	0.000	0.000
M-47-00	PWSA-G-9_S1	NINE_7005	GR	0.194	0.183	0.000	0.000	0.011
M-47-00	PWSA-B-Lower_S1	NINE_7006	GR	0.242	0.000	0.242	0.000	0.000
M-47-00	PWSA-G-9_S1	NINE_7007	GR	0.167	0.000	0.167	0.000	0.000
M-47-00	PWSA-B-Lower_S1	NINE_7008	GR	0.178	0.000	0.178	0.000	0.000

ALCOSAN POC	Model Subcatchment	Concept Comm / Inst Project UID	BMP Type	Concept Municipal Project Area (acres)	Taxable (acres)	Exempt (acres)	Provisionally Exempt (acres)	Public ROW (acres)
M-47-00	PWSA-B-Upper_S1	NINE_7009	GR	0.508	0.508	0.000	0.000	0.000
M-47-00	PWSA-B-Upper_S1	NINE_7010	GR	0.471	0.471	0.000	0.000	0.000
M-47-00	PWSA-H-11_S1	NINE_7011	GR	0.316	0.316	0.000	0.000	0.000
M-47-00	PWSA-H-11_S1	NINE_7012	GR	0.134	0.000	0.130	0.000	0.004
M-47-00	PWSA-H-11_S1	NINE_7013	GR	0.152	0.152	0.000	0.000	0.000
M-47-00	PWSA-H-11_S1	NINE_7014	GR	0.302	0.302	0.000	0.000	0.000
M-47-00	PWSA-H-11_S1	NINE_7015	GR	0.185	0.185	0.000	0.000	0.000
M-47-00	PWSA-B-Upper_S1	NINE_7016	GR	0.150	0.150	0.000	0.000	0.000
M-47-00	PWSA-G-9_S1	NINE_8001	SRPP	0.608	0.000	0.000	0.000	0.608
M-47-00	PWSA-G-9_S1	NINE_8002	SRPP	0.523	0.000	0.000	0.000	0.523
M-47-00	PWSA-G-9_S1	NINE_8003	SRPP	0.637	0.000	0.000	0.000	0.637
M-47-00	PWSA-G-9_S1	NINE_8004	SRPP	0.421	0.000	0.000	0.000	0.421
M-47-00	PWSA-C-6_S1	NINE_8007	SRPP	0.431	0.000	0.000	0.000	0.431
M-47-00	PWSA-C-6_S1	NINE_8008	SRPP	0.827	0.007	0.000	0.000	0.820
M-47-00	PWSA-H-11_S1	NINE_8010	SRPP	1.664	0.000	0.000	0.000	1.664
M-47-00	PWSA-H-11_S1	NINE_8011	SRPP	0.482	0.000	0.000	0.000	0.482
M-47-00	PWSA-H-11_S1	NINE_8012	SRPP	0.397	0.000	0.000	0.000	0.397
M-47-00	PWSA-F-9_S1	NINE_8013	SRPP	3.838	0.000	0.172	0.000	3.666
M-47-00	PWSA-F-9_S1	NINE_8014	SRPP	3.177	0.000	0.044	0.000	3.133
M-47-00	PWSA-F-9_S1	NINE_8015	SRPP	0.590	0.000	0.000	0.000	0.590
M-47-00	PWSA-F-9_S1	NINE_8016	SRPP	0.645	0.004	0.000	0.000	0.641
M-47-00	PWSA-F-9_S1	NINE_8017	SRPP	0.236	0.000	0.000	0.000	0.236
M-47-00	PWSA-E-8-8A_S1	NINE_8018	SRPP	1.914	0.000	0.000	0.000	1.914
M-47-00	PWSA-D-5_S1	NINE_8019	SRPP	1.548	0.001	0.000	0.000	1.547
M-47-00	PWSA-B-Lower_S1	NINE_8020	SRPP	0.173	0.000	0.000	0.000	0.173
M-47-00	PWSA-N-4_S1	NINE_8021	SRPP	0.216	0.000	0.053	0.000	0.163
M-47-00	PWSA-N-4_S1	NINE_8022	SRPP	0.364	0.000	0.000	0.000	0.364





- ★ ALCOSAN Structures
- ALCOSAN Shallow-Cut Interceptor
- ALCOSAN Deep Tunnel Interceptor
- Special Case
- Concept Commercial / Institutional Permeable Pavement Projects
- Concept Green Roof Projects
- State Roads
- Combined Sewer Subcatchment
- Municipal Boundaries



**ALCOSAN GSI Project**  
**Nine Mile Run M-47**  
**Concept Commercial / Institutional**  
**and Green Roofs GSI Projects**

Path: I:\PROJECTS\ALCOSAN GSI Project\03 - Task 2.1 Figures\AMR - Comm\GIS\SR.mxd

Source: Esri, DeLorme, USGS, Airphoto, Swisstopo, GEBCO, USGS, AeroGRID, IGN, Esri, ConceptDraw © 2011