

5.27 Study Area 27 – North Shore

These findings apply to ALCOSAN Points of Connection A-47 through A-56, which include combined sewer systems in the City of Pittsburgh.

North Shore - BMP GIS Features

The SUSTAIN BMP siting tool analysis resulted in identification of a total of 4,765 BMP GIS Features covering 579 acres, which consisted of the following:

Table 5.27-1 - TOTAL SUSTAIN BMP Features Output

SUSTAIN BMP Feature Type	Number of Features	Area of BMP Features (Acres)
Permeable Pavement	1,513	163
Bioretention	1,791	244
Infiltration Basin/Trenches	88	3
Vegetated Filter Strips	318	84
Grass Swales	995	83
Constructed Wetlands	60	2

Locations of all identified BMP GIS features are presented on the SUSTAIN BMP Features Figure.

North Shore - Concept Municipal GSI Projects

Based on the BMP features, 201 concept Municipal GSI Projects were identified covering 33 total acres with a corresponding drainage area delineation of 119 total acres and consisted of the following:

Table 5.27-2 - Summary of Identified Concept Municipal GSI Projects

Concept GSI Technology	Number of Projects	GSI Project Area (Acres)	Project Drainage Area (Acres)
Permeable Pavement	101	29	113
Bioretention	96	3	6
Infiltration Basin/Trenches	2	< 1	< 1
Vegetated Filter Strips	2	< 1	< 1
Grass Swales	0	0	0
Constructed Wetlands	0	0	0

Project statistics including ALCOSAN POC, model subcatchment, BMP type, project area, area of project inside and outside of the public right-of-way, tributary drainage area, and tributary impervious drainage area are provided in the Concept Municipal Projects Table. Locations of all identified Concept Municipal GSI projects are presented in the Concept Municipal GSI Projects Figure (1) and the corresponding delineated tributary drainage areas are presented by BMP in the Individual Project Drainage Area Figures (4).

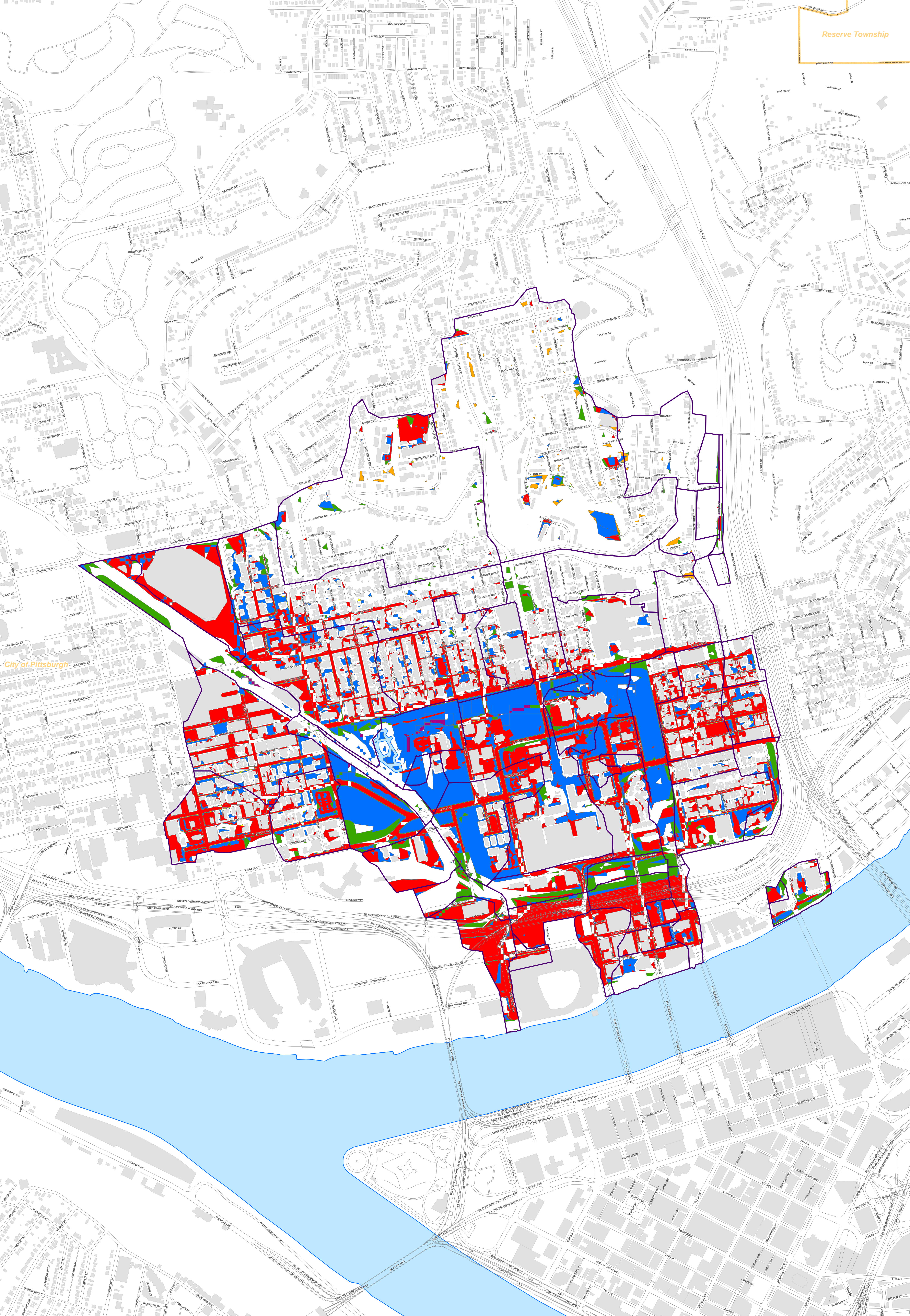
North Shore - Concept Commercial/Institutional and Special Case GSI Projects

Based on the BMP features, 254 concept Commercial/Institutional and Special Case GSI Projects were identified covering 135 total acres and consisted of the following:

Table 5.27-3 - Summary of Identified Concept Commercial/Institutional and Special Case GSI Projects

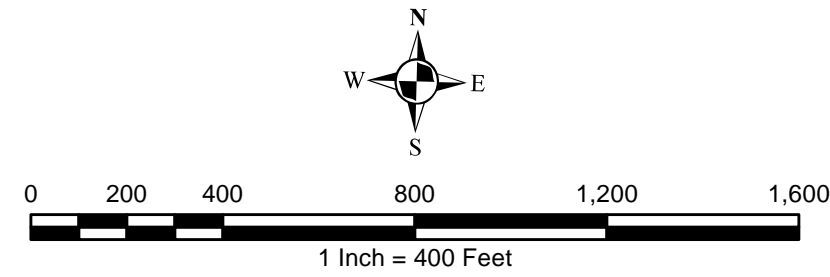
Concept GSI Technology or Special Case Project Category	Number of Projects	GSI Project Area (Acres)
Commercial/Institutional Permeable Pavement	108	46
Commercial/Institutional Green Roofs	93	57
State Route Permeable Pavement	53	32
Busway Permeable Pavement	0	0
Busway Bioretention	0	0

Project statistics including ALCOSAN POC, model subcatchment, BMP type, project area, area of project taxable, exempt, provisionally exempt and in the public right-of-way are provided in Concept Commercial / Institutional GSI Projects Table. Locations of all identified Concept Commercial / Institutional GSI projects are presented in the Concept Commercial / Institutional GSI Projects Figure (1).



City of Pittsburgh

- Permeable Pavement
- Vegetated Filter Strips
- Combined Sewer Subcatchment
- Bioretention Basin
- Grass Swales
- Municipal Boundaries
- Infiltration Basin / Trench
- Constructed Wetlands



ALCOSAN GSI Project
North Shore (A-47 thru A-56)
SUSTAIN BMP Features

North Shore Concept Municipal Projects

June 16, 2014

Revised October 7, 2014

*Note: The drainage area presented in this table is representative of the individual drainage area tributary to each concept municipal project without any revisions to account for overlap, without engineering judgment revisions applied, and without the drainage areas being clipped to their corresponding model subcatchments.

ALCOSAN POC	Model Subcatchment	Concept Municipal Project UID	BMP Type	Concept Municipal Project Area (acres)	Public ROW or Parcel		Concept Municipal Project Individual Drainage Area (acres)*	Concept Municipal Project Individual Project Impervious Drainage Area (acres)*
					Area of Municipal Project in Public ROW (acres)	Area of Municipal Project outside of Public ROW (acres)		
A-47-00	A-47-DWF-1/A-47-C-1	NSHR_1	PP	0.396	0.396	0.000	0.712	0.562
A-47-00	A-47-DWF-1/A-47-C-1	NSHR_2	PP	0.224	0.224	0.000	0.422	0.359
A-48-00	A-48-DWF-10/A-48-C-13-A	NSHR_3	PP	0.358	0.358	0.000	1.092	0.669
A-48-00	A-48-DWF-10/A-48-C-13-A	NSHR_4	PP	0.048	0.044	0.004	0.140	0.104
A-48-00	A-48-DWF-10/A-48-C-13-A	NSHR_5	PP	0.083	0.083	0.000	0.152	0.101
A-48-00	A-48-DWF-10/A-48-C-13-B	NSHR_6	PP	0.090	0.077	0.013	0.126	0.096
A-48-00	A-48-DWF-10/A-48-C-13-B	NSHR_7	PP	0.105	0.098	0.007	0.142	0.112
A-48-00	A-48-DWF-10/A-48-C-13-B	NSHR_8	PP	0.081	0.079	0.002	0.146	0.064
A-48-00	A-48-DWF-10/A-48-C-13-B	NSHR_9	PP	0.085	0.085	0.000	0.132	0.120
A-48-00	A-48-DWF-10/A-48-C-13-B	NSHR_10	PP	0.037	0.037	0.000	0.050	0.040
A-48-00	A-48-DWF-4/A-48-C-4	NSHR_11	PP	0.481	0.481	0.000	1.379	0.748
A-48-00	A-48-DWF-4/A-48-C-4	NSHR_12	PP	0.399	0.004	0.395	1.161	0.871
A-48-00	A-48-DWF-4/A-48-C-4	NSHR_13	PP	0.142	0.051	0.091	0.217	0.133
A-48-00	A-48-DWF-4/A-48-C-4	NSHR_14	PP	0.204	0.189	0.015	0.517	0.186
A-48-00	A-48-DWF-3/A-48-C-3	NSHR_15	PP	0.363	0.363	0.000	0.708	0.475
A-48-00	A-48-DWF-4/A-48-C-4	NSHR_16	PP	0.137	0.116	0.021	0.328	0.130
A-48-00	A-48-DWF-4/A-48-C-9-A	NSHR_17	PP	0.910	0.909	0.001	1.227	0.911
A-48-00	A-48-DWF-4/A-48-C-9-A	NSHR_18	PP	0.306	0.306	0.000	0.478	0.355
A-48-00	A-48-DWF-5/A-48-C-6	NSHR_19	PP	0.488	0.488	0.000	2.007	1.117
A-48-00	A-48-DWF-5/A-48-C-6	NSHR_20	PP	0.214	0.199	0.015	1.146	0.470
A-48-00	A-48-DWF-5/A-48-C-6	NSHR_21	PP	0.040	0.040	0.000	0.098	0.060
A-48-00	A-48-DWF-6/A-48-C-7-A	NSHR_22	PP	1.100	1.100	0.000	5.808	3.242
A-48-00	A-48-DWF-6/A-48-C-7-A	NSHR_23	PP	0.181	0.177	0.004	0.776	0.468
A-48-00	A-48-DWF-6/A-48-C-7-A	NSHR_24	PP	0.158	0.158	0.000	1.202	0.967
A-48-00	A-48-DWF-6/A-48-C-7-A	NSHR_25	PP	0.165	0.165	0.000	0.910	0.767
A-48-00	A-48-DWF-6/A-48-C-7-A	NSHR_26	PP	0.061	0.050	0.011	0.231	0.179
A-48-00	A-48-DWF-6/A-48-C-7-A	NSHR_27	PP	0.408	0.405	0.003	1.415	1.271
A-48-00	A-48-DWF-6/A-48-C-7-B	NSHR_28	PP	0.172	0.172	0.000	0.216	0.194

ALCOSAN POC	Model Subcatchment	Concept Municipal Project UID	BMP Type	Concept Municipal Project Area (acres)	Public ROW or Parcel		Concept Municipal Project Individual Drainage Area (acres)*	Concept Municipal Project Individual Project Impervious Drainage Area (acres)*
					Area of Municipal Project in Public ROW (acres)	Area of Municipal Project outside of Public ROW (acres)		
A-48-00	A-48-DWF-6/A-48-C-7-B	NSHR_29	PP	0.191	0.173	0.018	1.226	0.861
A-48-00	A-48-DWF-6/A-48-C-7-B	NSHR_30	PP	0.580	0.580	0.000	2.335	1.737
A-48-00	A-48-DWF-6/A-48-C-7-A	NSHR_31	PP	0.025	0.020	0.005	0.050	0.029
A-48-00	A-48-DWF-6/A-48-C-7-B	NSHR_32	PP	0.158	0.158	0.000	0.365	0.193
A-48-00	A-48-DWF-7/A-48-C-10	NSHR_33	PP	0.208	0.208	0.000	0.474	0.221
A-48-00	A-48-DWF-7/A-48-C-12	NSHR_34	PP	0.045	0.045	0.000	0.157	0.098
A-48-00	A-48-DWF-7/A-48-C-15	NSHR_35	PP	0.031	0.031	0.000	0.064	0.038
A-48-00	A-48-DWF-7/A-48-C-12	NSHR_36	PP	0.029	0.029	0.000	0.062	0.020
A-48-00	A-48-DWF-7/A-48-C-12	NSHR_37	PP	0.319	0.319	0.000	1.052	0.672
A-48-00	A-48-DWF-7/A-48-C-12	NSHR_38	PP	0.090	0.090	0.000	0.564	0.135
A-48-00	A-48-DWF-7/A-48-C-14	NSHR_39	PP	0.427	0.426	0.001	1.208	0.455
A-48-00	A-48-DWF-7/A-48-C-15	NSHR_40	PP	0.598	0.598	0.000	2.349	1.527
A-48-00	A-48-DWF-7/A-48-C-15	NSHR_41	PP	0.335	0.335	0.000	2.540	1.482
A-48-00	A-48-DWF-7/A-48-C-15	NSHR_42	PP	0.041	0.039	0.002	0.093	0.073
A-48-00	A-48-DWF-7/A-48-C-15	NSHR_43	PP	0.235	0.226	0.009	1.630	0.980
A-48-00	A-48-DWF-7/A-48-C-15	NSHR_44	PP	0.156	0.156	0.000	0.886	0.443
A-48-00	A-48-DWF-7/A-48-C-15	NSHR_45	PP	0.068	0.068	0.000	0.212	0.144
A-48-00	A-48-DWF-7/A-48-C-15	NSHR_46	PP	0.035	0.035	0.000	0.066	0.038
A-48-00	A-48-DWF-8/A-48-C-8-A	NSHR_47	PP	0.128	0.128	0.000	0.760	0.281
A-48-00	A-48-DWF-7/A-48-C-15	NSHR_48	PP	1.796	1.796	0.000	7.650	4.879
A-48-00	A-48-DWF-8/A-48-C-8-A	NSHR_49	PP	0.184	0.184	0.000	0.436	0.368
A-48-00	A-48-DWF-8/A-48-C-8-A	NSHR_50	PP	0.295	0.295	0.000	0.792	0.473
A-48-00	A-48-DWF-8/A-48-C-8-B	NSHR_51	PP	0.074	0.074	0.000	0.105	0.076
A-48-00	A-48-DWF-8/A-48-C-8-A	NSHR_52	PP	0.092	0.092	0.000	0.177	0.125
A-48-00	A-48-DWF-8/A-48-C-8-A	NSHR_53	PP	0.221	0.220	0.001	1.669	0.922
A-48-00	A-48-DWF-8/A-48-C-8-A	NSHR_54	PP	1.775	1.775	0.000	9.583	5.967
A-48-00	A-48-DWF-8/A-48-C-8-A	NSHR_55	PP	0.086	0.086	0.000	0.302	0.222
A-48-00	A-48-DWF-8/A-48-C-8-A	NSHR_56	PP	0.041	0.041	0.000	0.100	0.071
A-48-00	A-48-DWF-8/A-48-C-8-A	NSHR_57	PP	0.086	0.081	0.005	0.340	0.203
A-48-00	A-48-DWF-8/A-48-C-8-A	NSHR_58	PP	0.064	0.064	0.000	0.171	0.106
A-48-00	A-48-DWF-8/A-48-C-8-B	NSHR_59	PP	0.774	0.774	0.000	4.342	1.877
A-48-00	A-48-DWF-8/A-48-C-8-B	NSHR_60	PP	0.199	0.193	0.006	1.052	0.417
A-48-00	A-48-DWF-8/A-48-C-8-B	NSHR_61	PP	0.049	0.049	0.000	0.166	0.081
A-48-00	A-48-DWF-8/A-48-C-8-B	NSHR_62	PP	0.055	0.055	0.000	0.117	0.079

ALCOSAN POC	Model Subcatchment	Concept Municipal Project UID	BMP Type	Concept Municipal Project Area (acres)	Public ROW or Parcel		Concept Municipal Project Individual Drainage Area (acres)*	Concept Municipal Project Individual Project Impervious Drainage Area (acres)*
					Area of Municipal Project in Public ROW (acres)	Area of Municipal Project outside of Public ROW (acres)		
A-48-00	A-48-DWF-8/A-48-C-8-B	NSHR_63	PP	0.027	0.026	0.001	0.042	0.031
A-48-00	A-48-DWF-8/A-48-C-8-B	NSHR_64	PP	0.080	0.080	0.000	0.330	0.144
A-48-00	A-48-DWF-8/A-48-C-8-B	NSHR_65	PP	0.072	0.072	0.000	0.122	0.090
A-48-00	A-48-DWF-8/A-48-C-8-B	NSHR_66	PP	0.068	0.068	0.000	0.144	0.081
A-48-00	A-48-DWF-8/A-48-C-8-B	NSHR_67	PP	1.651	1.651	0.000	11.699	5.908
A-48-00	A-48-DWF-8/A-48-C-8-B	NSHR_68	PP	0.149	0.149	0.000	0.467	0.330
A-48-00	A-48-DWF-8/A-48-C-8-C	NSHR_69	PP	0.056	0.056	0.000	0.102	0.070
A-48-00	A-48-DWF-8/A-48-C-8-C	NSHR_70	PP	0.100	0.100	0.000	0.142	0.127
A-48-00	A-48-DWF-9/A-48-C-11-A	NSHR_71	PP	0.439	0.397	0.042	1.303	0.864
A-48-00	A-48-DWF-9/A-48-C-11-B	NSHR_72	PP	0.128	0.124	0.004	0.605	0.309
A-48-00	A-48-DWF-9/A-48-C-11-B	NSHR_73	PP	0.490	0.399	0.091	0.929	0.719
A-48-00	A-48-DWF-9/A-48-C-11-B	NSHR_74	PP	0.030	0.020	0.010	0.164	0.073
A-48-00	A-48-DWF-9/A-48-C-11-B	NSHR_75	PP	0.147	0.147	0.000	0.488	0.173
A-50-00	A-50-DWF-1/A-50-C-1	NSHR_76	PP	0.228	0.228	0.000	0.455	0.267
A-50-00	A-50-DWF-2/A-50-C-4-A	NSHR_77	PP	0.230	0.230	0.000	0.539	0.364
A-50-00	A-50-DWF-2/A-50-C-4-B	NSHR_78	PP	0.522	0.522	0.000	1.723	1.057
A-50-00	A-50-DWF-2/A-50-C-4-A	NSHR_79	PP	0.323	0.323	0.000	0.854	0.490
A-51-00	A-51-DWF-5/A-51-C-9	NSHR_80	PP	0.629	0.612	0.017	0.650	0.639
A-51-00	A-51-DWF-2/A-51-C-2	NSHR_81	PP	0.061	0.061	0.000	0.242	0.092
A-51-00	A-51-DWF-2/A-51-C-2	NSHR_82	PP	0.190	0.190	0.000	0.415	0.261
A-51-00	A-51-DWF-3/A-51-C-4	NSHR_83	PP	0.329	0.329	0.000	1.223	0.853
A-51-00	A-51-DWF-3/A-51-C-5	NSHR_84	PP	0.581	0.581	0.000	2.269	1.545
A-51-00	A-51-DWF-3/A-51-C-5	NSHR_85	PP	0.634	0.634	0.000	2.433	1.546
A-51-00	A-51-DWF-4/A-51-C-3-A	NSHR_86	PP	0.084	0.084	0.000	0.254	0.117
A-51-00	A-51-DWF-4/A-51-C-3-A	NSHR_87	PP	0.088	0.088	0.000	0.334	0.163
A-51-00	A-51-DWF-4/A-51-C-3-A	NSHR_88	PP	0.100	0.100	0.000	0.449	0.211
A-51-00	A-51-DWF-4/A-51-C-3-A	NSHR_89	PP	0.099	0.099	0.000	0.462	0.250
A-51-00	A-51-DWF-4/A-51-C-3-A	NSHR_90	PP	2.243	2.243	0.000	9.890	6.468
A-51-00	A-51-DWF-5/A-51-C-6	NSHR_91	PP	0.327	0.327	0.000	1.000	0.805
A-51-00	A-51-DWF-5/A-51-C-7	NSHR_92	PP	0.085	0.085	0.000	0.298	0.201
A-51-00	A-51-DWF-5/A-51-C-7	NSHR_93	PP	0.098	0.098	0.000	0.406	0.222
A-51-00	A-51-DWF-5/A-51-C-7	NSHR_94	PP	1.080	1.080	0.000	2.774	1.851
A-51-00	A-51-DWF-5/A-51-C-8-A	NSHR_95	PP	0.078	0.078	0.000	0.431	0.191
A-51-00	A-51-DWF-5/A-51-C-8-A	NSHR_96	PP	0.264	0.264	0.000	0.689	0.465

ALCOSAN POC	Model Subcatchment	Concept Municipal Project UID	BMP Type	Concept Municipal Project Area (acres)	Public ROW or Parcel		Concept Municipal Project Individual Drainage Area (acres)*	Concept Municipal Project Individual Project Impervious Drainage Area (acres)*
					Area of Municipal Project in Public ROW (acres)	Area of Municipal Project outside of Public ROW (acres)		
A-48-00	A-48-DWF-7/A-48-C-14	NSHR_97	PP	0.234	0.214	0.020	0.454	0.261
A-51-00	A-51-DWF-4/A-51-C-3-A	NSHR_98	PP	0.101	0.101	0.000	0.546	0.454
A-48-00	A-48-DWF-6/A-48-C-7-A	NSHR_99	PP	0.182	0.177	0.005	0.951	0.520
A-48-00	A-48-DWF-6/A-48-C-7-B	NSHR_100	PP	0.138	0.060	0.078	0.299	0.254
A-49-00	A-49-DWF-1/A-49-C-1	NSHR_101	PP	0.122	0.122	0.000	0.260	0.170
A-51-00	A-51-DWF-2/A-51-C-2	NSHR_1001	BR	0.025	0.013	0.012	0.041	0.013
A-51-00	A-51-DWF-2/A-51-C-2	NSHR_1002	BR	0.085	0.036	0.049	0.264	0.127
A-48-00	A-48-DWF-4/A-48-C-9-A	NSHR_1003	BR	0.013	0.011	0.002	0.016	0.000
A-48-00	A-48-DWF-4/A-48-C-9-A	NSHR_1004	BR	0.066	0.039	0.027	0.097	0.007
A-48-00	A-48-DWF-4/A-48-C-9-A	NSHR_1005	BR	0.083	0.065	0.018	0.108	0.027
A-48-00	A-48-DWF-10/A-48-C-13-A	NSHR_1006	BR	0.016	0.012	0.004	0.024	0.002
A-48-00	A-48-DWF-10/A-48-C-13-A	NSHR_1007	BR	0.006	0.002	0.004	0.010	0.002
A-48-00	A-48-DWF-10/A-48-C-13-A	NSHR_1008	BR	0.008	0.008	0.000	0.012	0.002
A-48-00	A-48-DWF-10/A-48-C-13-B	NSHR_1009	BR	0.006	0.006	0.000	0.011	0.002
A-48-00	A-48-DWF-10/A-48-C-13-B	NSHR_1010	BR	0.017	0.000	0.017	0.025	0.013
A-48-00	A-48-DWF-10/A-48-C-13-B	NSHR_1011	BR	0.011	0.004	0.007	0.014	0.003
A-48-00	A-48-DWF-10/A-48-C-13-B	NSHR_1012	BR	0.008	0.000	0.008	0.010	0.000
A-48-00	A-48-DWF-10/A-48-C-13-B	NSHR_1013	BR	0.006	0.000	0.006	0.009	0.001
A-48-00	A-48-DWF-10/A-48-C-13-B	NSHR_1014	BR	0.008	0.005	0.003	0.009	0.002
A-48-00	A-48-DWF-10/A-48-C-13-B	NSHR_1015	BR	0.010	0.001	0.009	0.012	0.003
A-48-00	A-48-DWF-2/A-48-C-2	NSHR_1016	BR	0.028	0.028	0.000	0.036	0.003
A-48-00	A-48-DWF-2/A-48-C-2	NSHR_1017	BR	0.031	0.031	0.000	0.042	0.012
A-48-00	A-48-DWF-2/A-48-C-2	NSHR_1018	BR	0.031	0.031	0.000	0.041	0.010
A-48-00	A-48-DWF-2/A-48-C-2	NSHR_1019	BR	0.062	0.024	0.038	0.159	0.088
A-50-00	A-50-DWF-2/A-50-C-4-C	NSHR_1020	BR	0.115	0.052	0.063	0.170	0.063
A-48-00	A-48-DWF-3/A-48-C-3	NSHR_1021	BR	0.037	0.025	0.012	0.053	0.033
A-48-00	A-48-DWF-3/A-48-C-3	NSHR_1022	BR	0.010	0.007	0.003	0.012	0.003
A-48-00	A-48-DWF-4/A-48-C-4	NSHR_1023	BR	0.055	0.053	0.002	0.111	0.029
A-48-00	A-48-DWF-4/A-48-C-4	NSHR_1024	BR	0.033	0.010	0.023	0.037	0.003
A-48-00	A-48-DWF-4/A-48-C-4	NSHR_1025	BR	0.068	0.056	0.012	0.091	0.019
A-48-00	A-48-DWF-4/A-48-C-4	NSHR_1026	BR	0.049	0.049	0.000	0.061	0.019
A-48-00	A-48-DWF-4/A-48-C-4	NSHR_1027	BR	0.015	0.015	0.000	0.023	0.004
A-48-00	A-48-DWF-4/A-48-C-4	NSHR_1028	BR	0.113	0.060	0.053	0.162	0.136
A-48-00	A-48-DWF-4/A-48-C-4	NSHR_1029	BR	0.071	0.071	0.000	0.130	0.015

ALCOSAN POC	Model Subcatchment	Concept Municipal Project UID	BMP Type	Concept Municipal Project Area (acres)	Public ROW or Parcel		Concept Municipal Project Individual Drainage Area (acres)*	Concept Municipal Project Individual Project Impervious Drainage Area (acres)*
					Area of Municipal Project in Public ROW (acres)	Area of Municipal Project outside of Public ROW (acres)		
A-48-00	A-48-DWF-4/A-48-C-4	NSHR_1030	BR	0.017	0.017	0.000	0.028	0.010
A-48-00	A-48-DWF-4/A-48-C-4	NSHR_1031	BR	0.019	0.019	0.000	0.025	0.004
A-48-00	A-48-DWF-4/A-48-C-9-A	NSHR_1032	BR	0.094	0.000	0.094	0.136	0.020
A-48-00	A-48-DWF-4/A-48-C-9-A	NSHR_1033	BR	0.017	0.000	0.017	0.022	0.007
A-48-00	A-48-DWF-4/A-48-C-9-A	NSHR_1034	BR	0.303	0.101	0.202	0.526	0.279
A-48-00	A-48-DWF-4/A-48-C-9-A	NSHR_1035	BR	0.021	0.005	0.016	0.025	0.000
A-48-00	A-48-DWF-4/A-48-C-9-A	NSHR_1036	BR	0.115	0.054	0.061	0.169	0.013
A-48-00	A-48-DWF-4/A-48-C-9-A	NSHR_1037	BR	0.049	0.009	0.040	0.066	0.016
A-48-00	A-48-DWF-4/A-48-C-9-A	NSHR_1038	BR	0.037	0.004	0.033	0.053	0.015
A-48-00	A-48-DWF-5/A-48-C-6	NSHR_1039	BR	0.013	0.004	0.009	0.016	0.003
A-48-00	A-48-DWF-6/A-48-C-7-A	NSHR_1040	BR	0.080	0.019	0.061	0.196	0.108
A-48-00	A-48-DWF-6/A-48-C-7-A	NSHR_1041	BR	0.015	0.005	0.010	0.020	0.020
A-48-00	A-48-DWF-6/A-48-C-7-A	NSHR_1042	BR	0.009	0.006	0.003	0.011	0.000
A-48-00	A-48-DWF-7/A-48-C-12	NSHR_1043	BR	0.009	0.003	0.006	0.013	0.000
A-48-00	A-48-DWF-7/A-48-C-12	NSHR_1044	BR	0.007	0.003	0.004	0.011	0.002
A-48-00	A-48-DWF-7/A-48-C-12	NSHR_1045	BR	0.005	0.005	0.000	0.007	0.003
A-48-00	A-48-DWF-7/A-48-C-14	NSHR_1046	BR	0.051	0.011	0.040	0.099	0.023
A-48-00	A-48-DWF-7/A-48-C-14	NSHR_1047	BR	0.015	0.013	0.002	0.023	0.008
A-48-00	A-48-DWF-7/A-48-C-14	NSHR_1048	BR	0.033	0.021	0.012	0.048	0.003
A-48-00	A-48-DWF-7/A-48-C-14	NSHR_1049	BR	0.013	0.012	0.001	0.015	0.003
A-48-00	A-48-DWF-7/A-48-C-14	NSHR_1050	BR	0.013	0.010	0.003	0.016	0.003
A-48-00	A-48-DWF-7/A-48-C-14	NSHR_1051	BR	0.011	0.011	0.000	0.014	0.003
A-48-00	A-48-DWF-7/A-48-C-14	NSHR_1052	BR	0.036	0.025	0.011	0.043	0.004
A-48-00	A-48-DWF-7/A-48-C-14	NSHR_1053	BR	0.063	0.022	0.041	0.095	0.026
A-48-00	A-48-DWF-7/A-48-C-15	NSHR_1054	BR	0.121	0.033	0.088	0.136	0.046
A-48-00	A-48-DWF-7/A-48-C-10	NSHR_1055	BR	0.038	0.014	0.024	0.054	0.032
A-48-00	A-48-DWF-7/A-48-C-10	NSHR_1056	BR	0.025	0.010	0.015	0.031	0.017
A-48-00	A-48-DWF-7/A-48-C-15	NSHR_1057	BR	0.085	0.031	0.054	0.093	0.047
A-48-00	A-48-DWF-7/A-48-C-15	NSHR_1058	BR	0.033	0.003	0.030	0.036	0.009
A-48-00	A-48-DWF-8/A-48-C-8-B	NSHR_1059	BR	0.032	0.015	0.017	0.088	0.009
A-48-00	A-48-DWF-8/A-48-C-8-B	NSHR_1060	BR	0.053	0.005	0.048	0.070	0.005
A-48-00	A-48-DWF-8/A-48-C-8-B	NSHR_1061	BR	0.020	0.000	0.020	0.022	0.000
A-48-00	A-48-DWF-8/A-48-C-8-B	NSHR_1062	BR	0.012	0.010	0.002	0.018	0.002
A-48-00	A-48-DWF-8/A-48-C-8-B	NSHR_1063	BR	0.009	0.002	0.007	0.013	0.001

ALCOSAN POC	Model Subcatchment	Concept Municipal Project UID	BMP Type	Concept Municipal Project Area (acres)	Public ROW or Parcel		Concept Municipal Project Individual Drainage Area (acres)*	Concept Municipal Project Individual Project Impervious Drainage Area (acres)*
					Area of Municipal Project in Public ROW (acres)	Area of Municipal Project outside of Public ROW (acres)		
A-48-00	A-48-DWF-8/A-48-C-8-B	NSHR_1064	BR	0.017	0.007	0.010	0.024	0.006
A-48-00	A-48-DWF-8/A-48-C-8-B	NSHR_1065	BR	0.021	0.014	0.007	0.049	0.007
A-48-00	A-48-DWF-8/A-48-C-8-B	NSHR_1066	BR	0.015	0.013	0.002	0.023	0.009
A-48-00	A-48-DWF-8/A-48-C-8-B	NSHR_1067	BR	0.023	0.005	0.018	0.037	0.033
A-48-00	A-48-DWF-7/A-48-C-14	NSHR_1068	BR	0.024	0.000	0.024	0.035	0.020
A-48-00	A-48-DWF-9/A-48-C-11-B	NSHR_1069	BR	0.009	0.000	0.009	0.012	0.005
A-48-00	A-48-DWF-9/A-48-C-11-B	NSHR_1070	BR	0.008	0.000	0.008	0.008	0.002
A-48-00	A-48-DWF-9/A-48-C-11-B	NSHR_1071	BR	0.009	0.000	0.009	0.011	0.004
A-48-00	A-48-DWF-9/A-48-C-11-B	NSHR_1072	BR	0.008	0.000	0.008	0.010	0.003
A-48-00	A-48-DWF-9/A-48-C-11-B	NSHR_1073	BR	0.031	0.026	0.005	0.057	0.025
A-50-00	A-50-DWF-2/A-50-C-4-B	NSHR_1074	BR	0.041	0.029	0.012	0.069	0.007
A-50-00	A-50-DWF-2/A-50-C-4-A	NSHR_1075	BR	0.070	0.058	0.012	0.104	0.013
A-50-00	A-50-DWF-2/A-50-C-4-C	NSHR_1076	BR	0.030	0.027	0.003	0.091	0.027
A-50-00	A-50-DWF-2/A-50-C-4-B	NSHR_1077	BR	0.030	0.029	0.001	0.052	0.007
A-50-00	A-50-DWF-2/A-50-C-4-B	NSHR_1078	BR	0.014	0.013	0.001	0.017	0.003
A-50-00	A-50-DWF-2/A-50-C-4-B	NSHR_1079	BR	0.038	0.033	0.005	0.071	0.013
A-50-00	A-50-DWF-2/A-50-C-4-A	NSHR_1080	BR	0.008	0.001	0.007	0.011	0.003
A-51-00	A-51-DWF-5/A-51-C-11-B	NSHR_1081	BR	0.031	0.031	0.000	0.035	0.002
A-51-00	A-51-DWF-5/A-51-C-11-A	NSHR_1082	BR	0.026	0.026	0.000	0.031	0.004
A-51-00	A-51-DWF-5/A-51-C-9	NSHR_1083	BR	0.082	0.082	0.000	0.088	0.024
A-51-00	A-51-DWF-2/A-51-C-2	NSHR_1084	BR	0.029	0.009	0.020	0.075	0.012
A-51-00	A-51-DWF-2/A-51-C-2	NSHR_1085	BR	0.026	0.018	0.008	0.039	0.006
A-51-00	A-51-DWF-2/A-51-C-2	NSHR_1086	BR	0.023	0.018	0.005	0.036	0.006
A-51-00	A-51-DWF-2/A-51-C-2	NSHR_1087	BR	0.037	0.014	0.023	0.081	0.017
A-51-00	A-51-DWF-2/A-51-C-2	NSHR_1088	BR	0.061	0.030	0.031	0.200	0.076
A-51-00	A-51-DWF-2/A-51-C-2	NSHR_1089	BR	0.017	0.007	0.010	0.022	0.002
A-51-00	A-51-DWF-3/A-51-C-5	NSHR_1090	BR	0.006	0.000	0.006	0.009	0.005
A-51-00	A-51-DWF-3/A-51-C-5	NSHR_1091	BR	0.065	0.008	0.057	0.223	0.121
A-51-00	A-51-DWF-3/A-51-C-5	NSHR_1092	BR	0.033	0.001	0.032	0.060	0.021
A-51-00	A-51-DWF-4/A-51-C-3-A	NSHR_1093	BR	0.006	0.005	0.001	0.007	0.002
A-51-00	A-51-DWF-4/A-51-C-3-A	NSHR_1094	BR	0.020	0.017	0.003	0.031	0.002
A-51-00	A-51-DWF-5/A-51-C-7	NSHR_1095	BR	0.007	0.006	0.001	0.009	0.002
A-51-00	A-51-DWF-5/A-51-C-7	NSHR_1096	BR	0.019	0.012	0.007	0.024	0.005
A-48-00	A-48-DWF-10/A-48-C-13-B	NSHR_2001	IB	0.025	0.002	0.023	0.030	0.007

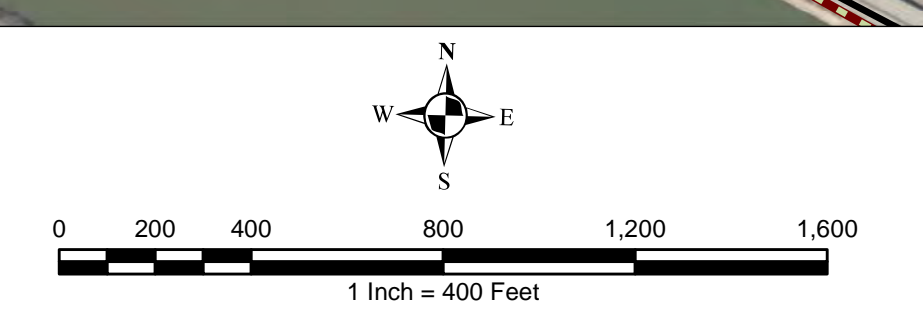
ALCOSAN POC	Model Subcatchment	Concept Municipal Project UID	BMP Type	Concept Municipal Project Area (acres)	Public ROW or Parcel		Concept Municipal Project Individual Drainage Area (acres)*	Concept Municipal Project Individual Project Impervious Drainage Area (acres)*
					Area of Municipal Project in Public ROW (acres)	Area of Municipal Project outside of Public ROW (acres)		
A-48-00	A-48-DWF-10/A-48-C-13-B	NSHR_2002	IB	0.017	0.006	0.011	0.024	0.003
A-48-00	A-48-DWF-9/A-48-C-11-B	NSHR_4001	VF	0.023	0.011	0.012	0.029	0.003
A-48-00	A-48-DWF-9/A-48-C-11-B	NSHR_4002	VF	0.011	0.004	0.007	0.014	0.001

Reserve Township

City of Pittsburgh



- ★ ALCOSAN Structures
 - ALCOSAN Shallow-Cut Interceptor
 - ALCOSAN Deep Tunnel Interceptor
 - One Overall Manholes
 - One Overall Sewerlines
- Municipal Projects**
- Infiltration Basin
 - Bioretention
 - Vegetated Filter Strip
 - Permeable Pavement
- State Roads
- Combined Sewer Subcatchment
 - Municipal Boundaries



ALCOSAN GSI Project
North Shore (A-47 thru A-56)
Concept Municipal GSI Projects

P:\FH\1\FH\03\34\34\05_ALCOSAN_GSI_Project\03 - Task 2.1\Figures\North Shore_Concept\Map\GSI.mxd

Source: Esri, DeLorme, USGS, Aero, Swisstopo, IGN, etc., © 2014, 2015, 2016, and the GIS User Community

North Shore Concept Commercial / Institutional Permeable Pavement, Green Roof, and Special Case GSI Projects: Summary Table

February 21, 2014
Revised October 10, 2014

ALCOSAN POC	Model Subcatchment	Concept Comm / Inst Project UID	BMP Type	Concept Municipal Project Area (acres)	Taxable (acres)	Exempt (acres)	Provisionally Exempt (acres)	Public ROW (acres)
A-48-00	A-48-DWF-2	NSHR_6001	CPP	2.797	0.300	0.000	0.000	2.497
A-47-00	A-48-DWF-2/A-48-C-2	NSHR_6002	CPP	0.912	0.187	0.004	0.018	0.703
A-47-00	A-47-DWF-1/A-47-C-1	NSHR_6003	CPP	2.553	0.385	0.029	0.000	2.139
A-47-00	A-47-DWF-2/A-47-C-2	NSHR_6004	CPP	0.686	0.685	0.000	0.000	0.001
A-48-00	A-48-DWF-10/A-48-C-13-B	NSHR_6005	CPP	0.816	0.007	0.000	0.000	0.809
A-48-00	A-48-DWF-2/A-48-C-2	NSHR_6006	CPP	0.247	0.002	0.245	0.000	0.000
A-48-00	A-48-DWF-2/A-48-C-2	NSHR_6007	CPP	0.510	0.510	0.000	0.000	0.000
A-48-00	A-48-DWF-3/A-48-C-3	NSHR_6008	CPP	0.097	0.094	0.000	0.000	0.003
A-48-00	A-48-DWF-3/A-48-C-3	NSHR_6009	CPP	0.173	0.173	0.000	0.000	0.000
A-48-00	A-48-DWF-4/A-48-C-4	NSHR_6010	CPP	0.117	0.117	0.000	0.000	0.000
A-48-00	A-48-DWF-4/A-48-C-4	NSHR_6011	CPP	0.279	0.000	0.279	0.000	0.000
A-48-00	A-48-DWF-4/A-48-C-5	NSHR_6012	CPP	0.581	0.581	0.000	0.000	0.000
A-48-00	A-48-DWF-4/A-48-C-5	NSHR_6013	CPP	0.465	0.001	0.000	0.000	0.464
A-48-00	A-48-DWF-4/A-48-C-5	NSHR_6014	CPP	1.020	0.000	1.015	0.000	0.005
A-48-00	A-48-DWF-4/A-48-C-5	NSHR_6015	CPP	1.968	0.000	0.038	0.000	1.930
A-48-00	A-48-DWF-4/A-48-C-5	NSHR_6016	CPP	0.657	0.001	0.211	0.000	0.445
A-48-00	A-48-DWF-5/A-48-C-6	NSHR_6017	CPP	0.365	0.005	0.000	0.000	0.360
A-48-00	A-48-DWF-5/A-48-C-6	NSHR_6018	CPP	0.289	0.285	0.000	0.000	0.004
A-48-00	A-48-DWF-6/A-48-C-7-A	NSHR_6019	CPP	0.174	0.001	0.000	0.000	0.173
A-48-00	A-48-DWF-6/A-48-C-7-A	NSHR_6020	CPP	0.088	0.088	0.000	0.000	0.000
A-48-00	A-48-DWF-6/A-48-C-7-A	NSHR_6021	CPP	0.277	0.253	0.005	0.000	0.019
A-48-00	A-48-DWF-6/A-48-C-7-A	NSHR_6022	CPP	0.146	0.139	0.000	0.000	0.007
A-48-00	A-48-DWF-6/A-48-C-7-A	NSHR_6023	CPP	0.366	0.363	0.000	0.000	0.003
A-48-00	A-48-DWF-6/A-48-C-7-A	NSHR_6024	CPP	0.316	0.249	0.000	0.000	0.067
A-48-00	A-48-DWF-6/A-48-C-7-A	NSHR_6025	CPP	0.108	0.108	0.000	0.000	0.000

ALCOSAN POC	Model Subcatchment	Concept Comm / Inst Project UID	BMP Type	Concept Municipal Project Area (acres)	Taxable (acres)	Exempt (acres)	Provisionally Exempt (acres)	Public ROW (acres)
A-48-00	A-48-DWF-6/A-48-C-7-B	NSHR_6026	CPP	0.281	0.281	0.000	0.000	0.000
A-48-00	A-48-DWF-6/A-48-C-7-B	NSHR_6027	CPP	0.464	0.450	0.000	0.000	0.014
A-48-00	A-48-DWF-6/A-48-C-7-B	NSHR_6028	CPP	0.353	0.000	0.048	0.000	0.305
A-48-00	A-48-DWF-6/A-48-C-7-B	NSHR_6029	CPP	0.108	0.105	0.000	0.000	0.003
A-48-00	A-48-DWF-6/A-48-C-7-B	NSHR_6030	CPP	0.149	0.141	0.000	0.000	0.008
A-48-00	A-48-DWF-6/A-48-C-7-B	NSHR_6031	CPP	0.125	0.119	0.000	0.000	0.006
A-48-00	A-48-DWF-6/A-48-C-7-B	NSHR_6032	CPP	0.274	0.192	0.000	0.000	0.082
A-48-00	A-48-DWF-6/A-48-C-7-B	NSHR_6033	CPP	0.102	0.096	0.000	0.000	0.006
A-48-00	A-48-DWF-6/A-48-C-7-B	NSHR_6034	CPP	0.159	0.154	0.000	0.000	0.005
A-48-00	A-48-DWF-6/A-48-C-7-B	NSHR_6035	CPP	0.089	0.000	0.085	0.000	0.004
A-48-00	A-48-DWF-6/A-48-C-7-D	NSHR_6036	CPP	6.421	0.000	6.421	0.000	0.000
A-48-00	A-48-DWF-6/A-48-C-7-D	NSHR_6037	CPP	0.402	0.000	0.402	0.000	0.000
A-48-00	A-48-DWF-7/A-48-C-10	NSHR_6038	CPP	0.541	0.000	0.541	0.000	0.000
A-48-00	A-48-DWF-7/A-48-C-15	NSHR_6039	CPP	0.163	0.045	0.118	0.000	0.000
A-48-00	A-48-DWF-7/A-48-C-12	NSHR_6040	CPP	0.057	0.000	0.052	0.000	0.005
A-48-00	A-48-DWF-7/A-48-C-14	NSHR_6041	CPP	0.317	0.000	0.018	0.000	0.299
A-48-00	A-48-DWF-7/A-48-C-14	NSHR_6042	CPP	0.093	0.093	0.000	0.000	0.000
A-48-00	A-48-DWF-7/A-48-C-14	NSHR_6043	CPP	0.220	0.220	0.000	0.000	0.000
A-48-00	A-48-DWF-7/A-48-C-14	NSHR_6044	CPP	0.651	0.006	0.000	0.000	0.645
A-48-00	A-48-DWF-4/A-48-C-4	NSHR_6045	CPP	0.140	0.105	0.013	0.000	0.022
A-48-00	A-48-DWF-7/A-48-C-14	NSHR_6046	CPP	1.089	1.005	0.070	0.000	0.014
A-48-00	A-48-DWF-7/A-48-C-15	NSHR_6047	CPP	0.056	0.009	0.000	0.000	0.047
A-48-00	A-48-DWF-7/A-48-C-15	NSHR_6048	CPP	0.292	0.292	0.000	0.000	0.000
A-48-00	A-48-DWF-8/A-48-C-8-A	NSHR_6049	CPP	0.372	0.372	0.000	0.000	0.000
A-48-00	A-48-DWF-8/A-48-C-8-A	NSHR_6050	CPP	0.416	0.413	0.000	0.000	0.003
A-48-00	A-48-DWF-8/A-48-C-8-A	NSHR_6051	CPP	0.101	0.101	0.000	0.000	0.000
A-48-00	A-48-DWF-8/A-48-C-8-A	NSHR_6052	CPP	0.454	0.057	0.000	0.000	0.397
A-48-00	A-48-DWF-8/A-48-C-8-A	NSHR_6053	CPP	0.149	0.149	0.000	0.000	0.000
A-48-00	A-48-DWF-8/A-48-C-8-A	NSHR_6054	CPP	0.096	0.087	0.000	0.000	0.009
A-48-00	A-48-DWF-8/A-48-C-8-A	NSHR_6055	CPP	0.138	0.038	0.000	0.000	0.100

ALCOSAN POC	Model Subcatchment	Concept Comm / Inst Project UID	BMP Type	Concept Municipal Project Area (acres)	Taxable (acres)	Exempt (acres)	Provisionally Exempt (acres)	Public ROW (acres)
A-48-00	A-48-DWF-8/A-48-C-8-A	NSHR_6056	CPP	0.278	0.242	0.000	0.000	0.036
A-48-00	A-48-DWF-8/A-48-C-8-A	NSHR_6057	CPP	0.143	0.107	0.000	0.000	0.036
A-48-00	A-48-DWF-8/A-48-C-8-B	NSHR_6058	CPP	0.443	0.000	0.029	0.000	0.414
A-48-00	A-48-DWF-8/A-48-C-8-A	NSHR_6059	CPP	0.193	0.174	0.000	0.000	0.019
A-48-00	A-48-DWF-8/A-48-C-8-B	NSHR_6060	CPP	0.464	0.173	0.042	0.000	0.249
A-48-00	A-48-DWF-8/A-48-C-8-B	NSHR_6061	CPP	0.160	0.160	0.000	0.000	0.000
A-48-00	A-48-DWF-8/A-48-C-8-B	NSHR_6062	CPP	0.105	0.001	0.104	0.000	0.000
A-48-00	A-48-DWF-8/A-48-C-8-C	NSHR_6063	CPP	0.308	0.000	0.308	0.000	0.000
A-48-00	A-48-DWF-8/A-48-C-8-C	NSHR_6064	CPP	0.167	0.167	0.000	0.000	0.000
A-48-00	A-48-DWF-8/A-48-C-8-C	NSHR_6065	CPP	0.690	0.690	0.000	0.000	0.000
A-48-00	A-48-DWF-8/A-48-C-8-C	NSHR_6066	CPP	0.850	0.000	0.850	0.000	0.000
A-48-00	A-48-DWF-9/A-48-C-11-A	NSHR_6067	CPP	0.652	0.000	0.000	0.652	0.000
A-48-00	A-48-DWF-9/A-48-C-11-A	NSHR_6068	CPP	0.257	0.000	0.257	0.000	0.000
A-48-00	A-48-DWF-9/A-48-C-11-A	NSHR_6069	CPP	0.207	0.000	0.028	0.000	0.179
A-48-00	A-48-DWF-9/A-48-C-11-A	NSHR_6070	CPP	1.111	1.111	0.000	0.000	0.000
A-48-00	A-48-DWF-9/A-48-C-11-B	NSHR_6071	CPP	0.105	0.000	0.105	0.000	0.000
A-48-00	A-48-DWF-9/A-48-C-11-B	NSHR_6072	CPP	0.182	0.000	0.182	0.000	0.000
A-48-00	A-48-DWF-9/A-48-C-11-B	NSHR_6073	CPP	0.057	0.002	0.051	0.000	0.004
A-48-00	A-48-DWF-9/A-48-C-11-B	NSHR_6074	CPP	0.066	0.000	0.057	0.000	0.009
A-49-00	A-49-DWF-1/A-49-C-1	NSHR_6075	CPP	0.128	0.128	0.000	0.000	0.000
A-50-00	A-50-DWF-1/A-50-C-2	NSHR_6076	CPP	0.268	0.268	0.000	0.000	0.000
A-50-00	A-50-DWF-1/A-50-C-3	NSHR_6077	CPP	0.436	0.196	0.137	0.000	0.103
A-50-00	A-50-DWF-1/A-50-C-3	NSHR_6078	CPP	0.483	0.000	0.000	0.000	0.483
A-50-00	A-50-DWF-2/A-50-C-4-A	NSHR_6079	CPP	0.160	0.000	0.157	0.000	0.003
A-50-00	A-50-DWF-2/A-50-C-4-A	NSHR_6080	CPP	0.317	0.000	0.007	0.000	0.310
A-50-00	A-50-DWF-2/A-50-C-4-B	NSHR_6081	CPP	0.261	0.048	0.006	0.000	0.207
A-50-00	A-50-DWF-2/A-50-C-4-B	NSHR_6082	CPP	0.733	0.733	0.000	0.000	0.000
A-50-00	A-50-DWF-2/A-50-C-4-C	NSHR_6083	CPP	0.639	0.267	0.053	0.000	0.319
A-51-00	A-51-DWF-1/A-51-C-1	NSHR_6084	CPP	0.402	0.008	0.047	0.000	0.347
A-51-00	A-51-DWF-2/A-51-C-2	NSHR_6085	CPP	0.058	0.005	0.000	0.000	0.053

ALCOSAN POC	Model Subcatchment	Concept Comm / Inst Project UID	BMP Type	Concept Municipal Project Area (acres)	Taxable (acres)	Exempt (acres)	Provisionally Exempt (acres)	Public ROW (acres)
A-51-00	A-51-DWF-3/A-51-C-5	NSHR_6086	CPP	0.420	0.406	0.000	0.000	0.014
A-51-00	A-51-DWF-3/A-51-C-5	NSHR_6087	CPP	0.896	0.193	0.000	0.000	0.703
A-51-00	A-51-DWF-3/A-51-C-5	NSHR_6088	CPP	0.345	0.000	0.345	0.000	0.000
A-51-00	A-51-DWF-3/A-51-C-5	NSHR_6089	CPP	0.063	0.000	0.063	0.000	0.000
A-51-00	A-51-DWF-3/A-51-C-5	NSHR_6090	CPP	0.077	0.053	0.000	0.000	0.024
A-51-00	A-51-DWF-4/A-51-C-3-A	NSHR_6091	CPP	0.132	0.132	0.000	0.000	0.000
A-51-00	A-51-DWF-4/A-51-C-3-A	NSHR_6092	CPP	0.041	0.031	0.000	0.000	0.010
A-51-00	A-51-DWF-4/A-51-C-3-A	NSHR_6093	CPP	0.200	0.008	0.000	0.000	0.192
A-51-00	A-51-DWF-4/A-51-C-3-A	NSHR_6094	CPP	0.567	0.000	0.018	0.000	0.549
A-51-00	A-51-DWF-4/A-51-C-3-A	NSHR_6095	CPP	0.041	0.016	0.000	0.000	0.025
A-51-00	A-51-DWF-4/A-51-C-3-A	NSHR_6096	CPP	0.190	0.025	0.026	0.000	0.139
A-51-00	A-51-DWF-5/A-51-C-6	NSHR_6097	CPP	0.075	0.000	0.075	0.000	0.000
A-51-00	A-51-DWF-5/A-51-C-7	NSHR_6098	CPP	0.036	0.036	0.000	0.000	0.000
A-51-00	A-51-DWF-5/A-51-C-7	NSHR_6099	CPP	0.045	0.043	0.000	0.000	0.002
A-51-00	A-51-DWF-5/A-51-C-7	NSHR_6100	CPP	0.065	0.010	0.000	0.000	0.055
A-51-00	A-51-DWF-5/A-51-C-7	NSHR_6101	CPP	0.027	0.000	0.010	0.000	0.017
A-51-00	A-51-DWF-5/A-51-C-7	NSHR_6102	CPP	0.146	0.066	0.000	0.000	0.080
A-56-00	A-56-DWF-1/A-56-C-1-A	NSHR_6103	CPP	0.200	0.000	0.200	0.000	0.000
A-56-00	A-56-DWF-1/A-56-C-1-A	NSHR_6104	CPP	0.101	0.097	0.000	0.000	0.004
A-56-00	A-56-DWF-1/A-56-C-2	NSHR_6105	CPP	0.236	0.002	0.131	0.007	0.096
A-48-00	A-48-DWF-6/A-48-C-7-B	NSHR_6106	CPP	0.889	0.000	0.729	0.000	0.160
A-48-00	A-48-DWF-3/A-48-C-3	NSHR_6107	CPP	0.222	0.222	0.000	0.000	0.000
A-50-00	A-50-DWF-2/A-50-C-4-A	NSHR_6108	CPP	0.249	0.000	0.249	0.000	0.000
A-48-00	A-48-DWF-6/A-48-C-7-B	NSHR_7001	GR	0.269	0.000	0.091	0.000	0.178
A-48-00	A-48-DWF-8/A-48-C-8-A	NSHR_7002	GR	0.148	0.145	0.000	0.000	0.003
A-47-00	A-47-DWF-1/A-47-C-1	NSHR_7003	GR	0.790	0.778	0.000	0.000	0.012
A-48-00	A-48-DWF-7/A-48-C-14	NSHR_7004	GR	0.413	0.407	0.005	0.000	0.001
A-48-00	A-48-DWF-7/A-48-C-12	NSHR_7005	GR	0.204	0.000	0.030	0.000	0.174
A-50-00	A-50-DWF-1/A-50-C-3	NSHR_7006	GR	0.154	0.146	0.000	0.000	0.008
A-50-00	A-50-DWF-1/A-50-C-2	NSHR_7007	GR	0.967	0.967	0.000	0.000	0.000

ALCOSAN POC	Model Subcatchment	Concept Comm / Inst Project UID	BMP Type	Concept Municipal Project Area (acres)	Taxable (acres)	Exempt (acres)	Provisionally Exempt (acres)	Public ROW (acres)
A-49-00	A-49-DWF-1/A-49-C-1	NSHR_7008	GR	0.232	0.042	0.000	0.000	0.190
A-48-00	A-48-DWF-6/A-48-C-7-B	NSHR_7009	GR	0.330	0.000	0.302	0.000	0.028
A-51-00	A-51-DWF-3/A-51-C-5	NSHR_7010	GR	0.312	0.312	0.000	0.000	0.000
A-48-00	A-48-DWF-6/A-48-C-7-A	NSHR_7011	GR	0.305	0.204	0.000	0.000	0.101
A-48-00	A-48-DWF-6/A-48-C-7-A	NSHR_7012	GR	0.456	0.405	0.000	0.000	0.051
A-48-00	A-48-DWF-7/A-48-C-14	NSHR_7013	GR	0.145	0.000	0.145	0.000	0.000
A-48-00	A-48-DWF-8/A-48-C-8-B	NSHR_7014	GR	0.128	0.128	0.000	0.000	0.000
A-51-00	A-51-DWF-1/A-51-C-1	NSHR_7015	GR	0.313	0.076	0.000	0.000	0.237
A-51-00	A-51-DWF-5/A-51-C-8-A	NSHR_7016	GR	0.242	0.000	0.241	0.000	0.001
A-48-00	A-48-DWF-8/A-48-C-8-A	NSHR_7017	GR	0.226	0.205	0.000	0.000	0.021
A-50-00	A-50-DWF-1/A-50-C-2	NSHR_7018	GR	0.204	0.191	0.000	0.000	0.013
A-50-00	A-50-DWF-1/A-50-C-2	NSHR_7019	GR	0.154	0.000	0.145	0.000	0.009
A-48-00	A-48-DWF-4/A-48-C-4	NSHR_7020	GR	0.477	0.477	0.000	0.000	0.000
A-48-00	A-48-DWF-4/A-48-C-9-B	NSHR_7021	GR	0.225	0.218	0.000	0.000	0.007
A-51-00	A-51-DWF-5/A-51-C-6	NSHR_7022	GR	0.321	0.000	0.321	0.000	0.000
A-48-00	A-48-DWF-6/A-48-C-7-A	NSHR_7023	GR	0.136	0.008	0.000	0.000	0.128
A-48-00	A-48-DWF-3/A-48-C-3	NSHR_7024	GR	7.420	7.324	0.003	0.000	0.093
A-48-00	A-48-DWF-8/A-48-C-8-A	NSHR_7025	GR	0.233	0.233	0.000	0.000	0.000
A-48-00	A-48-DWF-6/A-48-C-7-A	NSHR_7026	GR	0.487	0.000	0.481	0.000	0.006
A-48-00	A-48-DWF-3/A-48-C-3	NSHR_7027	GR	0.491	0.008	0.000	0.000	0.483
A-51-00	A-51-DWF-3/A-51-C-5	NSHR_7028	GR	0.801	0.791	0.007	0.000	0.003
A-56-00	A-56-DWF-1/A-56-C-1-A	NSHR_7029	GR	0.347	0.325	0.000	0.006	0.016
A-48-00	A-48-DWF-6/A-48-C-7-A	NSHR_7030	GR	0.222	0.000	0.201	0.000	0.021
A-50-00	A-50-DWF-2/A-50-C-4-B	NSHR_7031	GR	0.503	0.503	0.000	0.000	0.000
A-48-00	A-48-DWF-3/A-48-C-3	NSHR_7032	GR	0.405	0.405	0.000	0.000	0.000
A-48-00	A-48-DWF-6/A-48-C-7-A	NSHR_7033	GR	0.282	0.272	0.000	0.000	0.010
A-48-00	A-48-DWF-6/A-48-C-7-A	NSHR_7034	GR	0.348	0.016	0.326	0.000	0.006
A-48-00	A-48-DWF-8/A-48-C-8-A	NSHR_7035	GR	0.231	0.000	0.229	0.000	0.002
A-48-00	A-48-DWF-8/A-48-C-8-A	NSHR_7036	GR	0.212	0.212	0.000	0.000	0.000
A-48-00	A-48-DWF-7/A-48-C-12	NSHR_7037	GR	0.144	0.000	0.001	0.000	0.143

ALCOSAN POC	Model Subcatchment	Concept Comm / Inst Project UID	BMP Type	Concept Municipal Project Area (acres)	Taxable (acres)	Exempt (acres)	Provisionally Exempt (acres)	Public ROW (acres)
A-48-00	A-48-DWF-10/A-48-C-13-A	NSHR_7038	GR	0.154	0.147	0.000	0.000	0.007
A-48-00	A-48-DWF-9/A-48-C-11-C	NSHR_7039	GR	0.131	0.131	0.000	0.000	0.000
A-48-00	A-48-DWF-4/A-48-C-5	NSHR_7040	GR	0.441	0.441	0.000	0.000	0.000
A-48-00	A-48-DWF-6/A-48-C-7-A	NSHR_7041	GR	0.548	0.538	0.000	0.000	0.010
A-50-00	A-50-DWF-1/A-50-C-2	NSHR_7042	GR	0.397	0.397	0.000	0.000	0.000
A-49-00	A-49-DWF-1/A-49-C-1	NSHR_7043	GR	0.452	0.448	0.000	0.000	0.004
A-48-00	A-48-DWF-6/A-48-C-7-A	NSHR_7044	GR	0.140	0.001	0.000	0.000	0.139
A-48-00	A-48-DWF-9/A-48-C-11-A	NSHR_7045	GR	0.414	0.412	0.002	0.000	0.000
A-51-00	A-51-DWF-4/A-51-C-3-A	NSHR_7046	GR	0.161	0.160	0.000	0.000	0.001
A-48-00	A-48-DWF-7/A-48-C-12	NSHR_7047	GR	1.152	1.149	0.000	0.000	0.003
A-48-00	A-48-DWF-8/A-48-C-8-C	NSHR_7048	GR	0.510	0.000	0.510	0.000	0.000
A-48-00	A-48-DWF-10/A-48-C-13-B	NSHR_7049	GR	0.118	0.000	0.118	0.000	0.000
A-48-00	A-48-DWF-3/A-48-C-3	NSHR_7050	GR	0.179	0.179	0.000	0.000	0.000
A-48-00	A-48-DWF-5/A-48-C-6	NSHR_7051	GR	0.272	0.257	0.000	0.000	0.015
A-48-00	A-48-DWF-3/A-48-C-3	NSHR_7052	GR	0.497	0.487	0.000	0.000	0.010
A-48-00	A-48-DWF-7/A-48-C-14	NSHR_7053	GR	0.446	0.446	0.000	0.000	0.000
A-48-00	A-48-DWF-7/A-48-C-14	NSHR_7054	GR	0.555	0.000	0.000	0.000	0.555
A-48-00	A-48-DWF-4/A-48-C-4	NSHR_7055	GR	0.461	0.000	0.368	0.000	0.093
A-48-00	A-48-DWF-7/A-48-C-15	NSHR_7056	GR	0.244	0.001	0.190	0.000	0.053
A-48-00	A-48-DWF-6/A-48-C-7-C	NSHR_7057	GR	0.932	0.040	0.000	0.000	0.892
A-48-00	A-48-DWF-10/A-48-C-13-A	NSHR_7058	GR	0.120	0.000	0.115	0.000	0.005
A-48-00	A-48-DWF-6/A-48-C-7-D	NSHR_7059	GR	9.526	0.000	9.525	0.000	0.001
A-49-00	A-49-DWF-1/A-49-C-1	NSHR_7060	GR	0.288	0.288	0.000	0.000	0.000
A-49-00	A-49-DWF-1/A-49-C-1	NSHR_7061	GR	0.251	0.236	0.000	0.000	0.015
A-48-00	A-48-DWF-4/A-48-C-4	NSHR_7062	GR	0.500	0.201	0.276	0.000	0.023
A-51-00	A-51-DWF-4/A-51-C-3-A	NSHR_7063	GR	0.358	0.358	0.000	0.000	0.000
A-48-00	A-48-DWF-8/A-48-C-8-A	NSHR_7064	GR	0.217	0.216	0.000	0.000	0.001
A-48-00	A-48-DWF-9/A-48-C-11-A	NSHR_7065	GR	0.420	0.000	0.000	0.420	0.000
A-48-00	A-48-DWF-10/A-48-C-13-B	NSHR_7066	GR	0.118	0.000	0.118	0.000	0.000
A-48-00	A-48-DWF-8/A-48-C-8-C	NSHR_7067	GR	0.666	0.000	0.656	0.000	0.010

ALCOSAN POC	Model Subcatchment	Concept Comm / Inst Project UID	BMP Type	Concept Municipal Project Area (acres)	Taxable (acres)	Exempt (acres)	Provisionally Exempt (acres)	Public ROW (acres)
A-48-00	A-48-DWF-6/A-48-C-7-A	NSHR_7068	GR	0.147	0.000	0.000	0.000	0.147
A-49-00	A-49-DWF-1/A-49-C-1	NSHR_7069	GR	0.135	0.135	0.000	0.000	0.000
A-50-00	A-50-DWF-1/A-50-C-1	NSHR_7070	GR	0.399	0.395	0.003	0.000	0.001
A-50-00	A-50-DWF-1/A-50-C-1	NSHR_7071	GR	0.639	0.639	0.000	0.000	0.000
A-48-00	A-48-DWF-2/A-48-C-2	NSHR_7072	GR	0.423	0.000	0.423	0.000	0.000
A-48-00	A-48-DWF-2/A-48-C-2	NSHR_7073	GR	0.388	0.386	0.000	0.000	0.002
A-51-00	A-51-DWF-3/A-51-C-4	NSHR_7074	GR	0.123	0.001	0.000	0.000	0.122
A-48-00	A-48-DWF-8/A-48-C-8-A	NSHR_7075	GR	0.136	0.134	0.000	0.000	0.002
A-48-00	A-48-DWF-6/A-48-C-7-A	NSHR_7076	GR	3.654	3.637	0.000	0.000	0.017
A-48-00	A-48-DWF-9/A-48-C-11-B	NSHR_7077	GR	4.829	0.349	4.179	0.000	0.301
A-48-00	A-48-DWF-7/A-48-C-15	NSHR_7078	GR	0.167	0.000	0.000	0.000	0.167
A-48-00	A-48-DWF-8/A-48-C-8-A	NSHR_7079	GR	0.182	0.180	0.000	0.000	0.002
A-48-00	A-48-DWF-8/A-48-C-8-A	NSHR_7080	GR	0.139	0.133	0.000	0.000	0.006
A-48-00	A-48-DWF-8/A-48-C-8-C	NSHR_7081	GR	0.379	0.379	0.000	0.000	0.000
A-48-00	A-48-DWF-10/A-48-C-13-B	NSHR_7082	GR	0.611	0.611	0.000	0.000	0.000
A-47-00	A-47-DWF-1/A-47-C-1	NSHR_7083	GR	0.376	0.327	0.000	0.000	0.049
A-50-00	A-50-DWF-2/A-50-C-4-B	NSHR_7084	GR	0.994	0.994	0.000	0.000	0.000
A-50-00	A-50-DWF-2/A-50-C-4-B	NSHR_7085	GR	1.476	1.470	0.000	0.000	0.006
A-48-00	A-48-DWF-6/A-48-C-7-A	NSHR_7086	GR	0.148	0.023	0.000	0.000	0.125
A-48-00	A-48-DWF-6/A-48-C-7-A	NSHR_7087	GR	0.217	0.006	0.203	0.000	0.008
A-48-00	A-48-DWF-6/A-48-C-7-B	NSHR_7088	GR	0.148	0.002	0.133	0.000	0.013
A-48-00	A-48-DWF-8/A-48-C-8-A	NSHR_7089	GR	0.136	0.128	0.000	0.000	0.008
A-49-00	A-49-DWF-1/A-49-C-1	NSHR_7090	GR	0.390	0.000	0.390	0.000	0.000
A-50-00	A-50-DWF-2/A-50-C-4-A	NSHR_7091	GR	0.514	0.514	0.000	0.000	0.000
A-48-00	A-48-DWF-5/A-48-C-6	NSHR_7092	GR	0.118	0.012	0.000	0.000	0.106
A-56-00	A-56-DWF-1/A-56-C-1-A	NSHR_7093	GR	0.125	0.044	0.044	0.000	0.037
A-48-00	A-48-DWF-7/A-48-C-14	NSHR_8001	SRPP	1.860	0.004	0.000	0.000	1.856
A-48-00	A-48-DWF-7/A-48-C-12	NSHR_8002	SRPP	0.366	0.000	0.019	0.000	0.347
A-48-00	A-48-DWF-7/A-48-C-15	NSHR_8003	SRPP	1.399	0.000	0.000	0.000	1.399
A-48-00	A-48-DWF-2	NSHR_8004	SRPP	0.678	0.000	0.000	0.000	0.678

ALCOSAN POC	Model Subcatchment	Concept Comm / Inst Project UID	BMP Type	Concept Municipal Project Area (acres)	Taxable (acres)	Exempt (acres)	Provisionally Exempt (acres)	Public ROW (acres)
A-51-00	A-51-DWF-5/A-51-C-6	NSHR_8005	SRPP	0.416	0.000	0.000	0.000	0.416
A-48-00	A-48-DWF-6/A-48-C-7-A	NSHR_8006	SRPP	0.866	0.001	0.000	0.000	0.865
A-48-00	A-48-DWF-6/A-48-C-7-B	NSHR_8007	SRPP	0.150	0.000	0.000	0.000	0.150
A-48-00	A-48-DWF-6/A-48-C-7-A	NSHR_8008	SRPP	0.317	0.000	0.083	0.000	0.234
A-48-00	A-48-DWF-6/A-48-C-7-B	NSHR_8009	SRPP	0.889	0.000	0.000	0.000	0.889
A-48-00	A-48-DWF-6/A-48-C-7-B	NSHR_8010	SRPP	0.240	0.000	0.000	0.000	0.240
A-48-00	A-48-DWF-6/A-48-C-7-B	NSHR_8011	SRPP	0.347	0.000	0.000	0.000	0.347
A-48-00	A-48-DWF-9/A-48-C-11-B	NSHR_8012	SRPP	1.223	0.000	0.163	0.000	1.060
A-48-00	A-48-DWF-9/A-48-C-11-A	NSHR_8013	SRPP	0.512	0.000	0.000	0.000	0.512
A-51-00	A-51-DWF-4/A-51-C-3-A	NSHR_8014	SRPP	0.651	0.000	0.058	0.000	0.593
A-51-00	A-51-DWF-4/A-51-C-3-A	NSHR_8015	SRPP	0.583	0.000	0.000	0.000	0.583
A-51-00	A-51-DWF-4/A-51-C-3-B	NSHR_8016	SRPP	0.627	0.000	0.000	0.000	0.627
A-51-00	A-51-DWF-2/A-51-C-2	NSHR_8017	SRPP	0.513	0.000	0.011	0.000	0.502
A-51-00	A-51-DWF-2/A-51-C-2	NSHR_8018	SRPP	0.290	0.000	0.000	0.000	0.290
A-51-00	A-51-DWF-2/A-51-C-2	NSHR_8019	SRPP	0.255	0.000	0.001	0.006	0.248
A-48-00	A-48-DWF-3/A-48-C-3	NSHR_8020	SRPP	0.938	0.000	0.000	0.000	0.938
A-48-00	A-48-DWF-4/A-48-C-4	NSHR_8021	SRPP	1.594	0.001	0.000	0.000	1.593
A-48-00	A-48-DWF-4/A-48-C-9-A	NSHR_8022	SRPP	0.919	0.000	0.353	0.000	0.566
A-48-00	A-48-DWF-4/A-48-C-9-B	NSHR_8023	SRPP	0.165	0.000	0.000	0.000	0.165
A-50-00	A-50-DWF-2/A-50-C-4-B	NSHR_8024	SRPP	0.598	0.000	0.003	0.000	0.595
A-50-00	A-50-DWF-2/A-50-C-4-B	NSHR_8025	SRPP	1.428	0.026	0.044	0.000	1.358
A-50-00	A-50-DWF-2/A-50-C-4-C	NSHR_8026	SRPP	0.428	0.000	0.051	0.050	0.327
A-50-00	A-50-DWF-2/A-50-C-4-A	NSHR_8027	SRPP	0.394	0.000	0.003	0.000	0.391
A-51-00	A-51-DWF-3/A-51-C-4	NSHR_8028	SRPP	0.240	0.000	0.005	0.000	0.235
A-48-00	A-48-DWF-5/A-48-C-6	NSHR_8029	SRPP	1.812	0.000	0.091	0.000	1.721
A-56-00	A-56-DWF-1/A-56-C-1-A	NSHR_8030	SRPP	0.507	0.028	0.000	0.007	0.472
A-48-00	A-48-DWF-2/A-48-C-2	NSHR_8031	SRPP	1.457	0.001	0.022	0.000	1.434
A-51-00	A-51-DWF-1/A-51-C-1	NSHR_8032	SRPP	0.524	0.000	0.000	0.000	0.524
A-50-00	A-50-DWF-1/A-50-C-2	NSHR_8033	SRPP	0.253	0.000	0.000	0.000	0.253
A-50-00	A-50-DWF-1/A-50-C-3	NSHR_8034	SRPP	0.223	0.000	0.000	0.000	0.223

ALCOSAN POC	Model Subcatchment	Concept Comm / Inst Project UID	BMP Type	Concept Municipal Project Area (acres)	Taxable (acres)	Exempt (acres)	Provisionally Exempt (acres)	Public ROW (acres)
A-47-00	A-47-DWF-1/A-47-C-1	NSHR_8035	SRPP	0.202	0.000	0.000	0.000	0.202
A-47-00	A-47-DWF-1/A-47-C-1	NSHR_8036	SRPP	0.117	0.000	0.000	0.000	0.117
A-47-00	A-47-DWF-1/A-47-C-1	NSHR_8037	SRPP	0.440	0.000	0.000	0.000	0.440
A-47-00	A-47-DWF-1/A-47-C-1	NSHR_8038	SRPP	0.244	0.000	0.000	0.000	0.244
A-49-00	A-49-DWF-1/A-49-C-1	NSHR_8039	SRPP	1.080	0.000	0.009	0.000	1.071
A-49-00	A-49-DWF-1/A-49-C-1	NSHR_8040	SRPP	0.148	0.000	0.006	0.000	0.142
A-49-00	A-49-DWF-1/A-49-C-1	NSHR_8041	SRPP	0.217	0.000	0.000	0.000	0.217
A-48-00	A-48-DWF-1/A-48-C-1	NSHR_8042	SRPP	0.331	0.000	0.006	0.000	0.325
A-50-00	A-50-DWF-1	NSHR_8043	SRPP	0.174	0.000	0.000	0.000	0.174
A-50-00	A-50-DWF-1	NSHR_8044	SRPP	0.199	0.000	0.000	0.000	0.199
A-51-00	A-51-DWF-1	NSHR_8045	SRPP	0.355	0.000	0.000	0.000	0.355
A-48-00	A-48-DWF-8/A-48-C-8-A	NSHR_8046	SRPP	0.913	0.000	0.001	0.000	0.912
A-48-00	A-48-DWF-8/A-48-C-8-A	NSHR_8047	SRPP	0.799	0.000	0.000	0.000	0.799
A-48-00	A-48-DWF-7/A-48-C-14	NSHR_8048	SRPP	0.418	0.000	0.099	0.000	0.319
A-48-00	A-48-DWF-8/A-48-C-8-A	NSHR_8049	SRPP	0.769	0.013	0.015	0.000	0.741
A-48-00	A-48-DWF-10/A-48-C-13-A	NSHR_8050	SRPP	0.665	0.000	0.000	0.000	0.665
A-51-00	A-51-DWF-3/A-51-C-5	NSHR_8051	SRPP	0.875	0.000	0.029	0.009	0.837
A-48-00	A-48-DWF-6/A-48-C-7-A	NSHR_8052	SRPP	0.278	0.000	0.011	0.000	0.267
A-48-00	A-48-DWF-8/A-48-C-8-B	NSHR_8053	SRPP	0.427	0.000	0.000	0.000	0.427

