

5.24 Study Area 24 – Bates Street

These findings apply to ALCOSAN Points of Connection M-19W, X and Y, which include combined sewer systems in the City of Pittsburgh.

Bates Street - BMP GIS Features

The SUSTAIN BMP siting tool analysis resulted in identification of a total of 2024 BMP GIS Features covering 98 acres, which consisted of the following:

Table 5.24-1 - TOTAL SUSTAIN BMP Features Output

SUSTAIN BMP Feature Type	Number of Features	Area of BMP Features (Acres)
Permeable Pavement	798	37
Bioretention	483	23
Infiltration Basin/Trenches	87	15
Vegetated Filter Strips	158	11
Grass Swales	498	11
Constructed Wetlands	0	0

Locations of all identified BMP GIS features are presented on the SUSTAIN BMP Features Figure.

Bates Street - Concept Municipal GSI Projects

Based on the BMP features, 77 concept Municipal GSI Projects were identified covering 14 total acres with a corresponding drainage area delineation of 49 total acres and consisted of the following:

Table 5.24-2 - Summary of Identified Concept Municipal GSI Projects

Concept GSI Technology	Number of Projects	GSI Project Area (Acres)	Project Drainage Area (Acres)
Permeable Pavement	40	13	47
Bioretention	31	1	2
Infiltration Basin/Trenches	6	< 1	< 1
Vegetated Filter Strips	0	0	0
Grass Swales	0	0	0
Constructed Wetlands	0	0	0

Project statistics including ALCOSAN POC, model subcatchment, BMP type, project area, area of project inside and outside of the public right-of-way, tributary drainage area, and tributary impervious drainage area are provided in the Concept Municipal Projects Table. Locations of all identified Concept Municipal GSI projects are presented in the Concept Municipal GSI Projects Figure (1) and the corresponding delineated tributary drainage areas are presented by BMP in the Individual Project Drainage Area Figures (3).

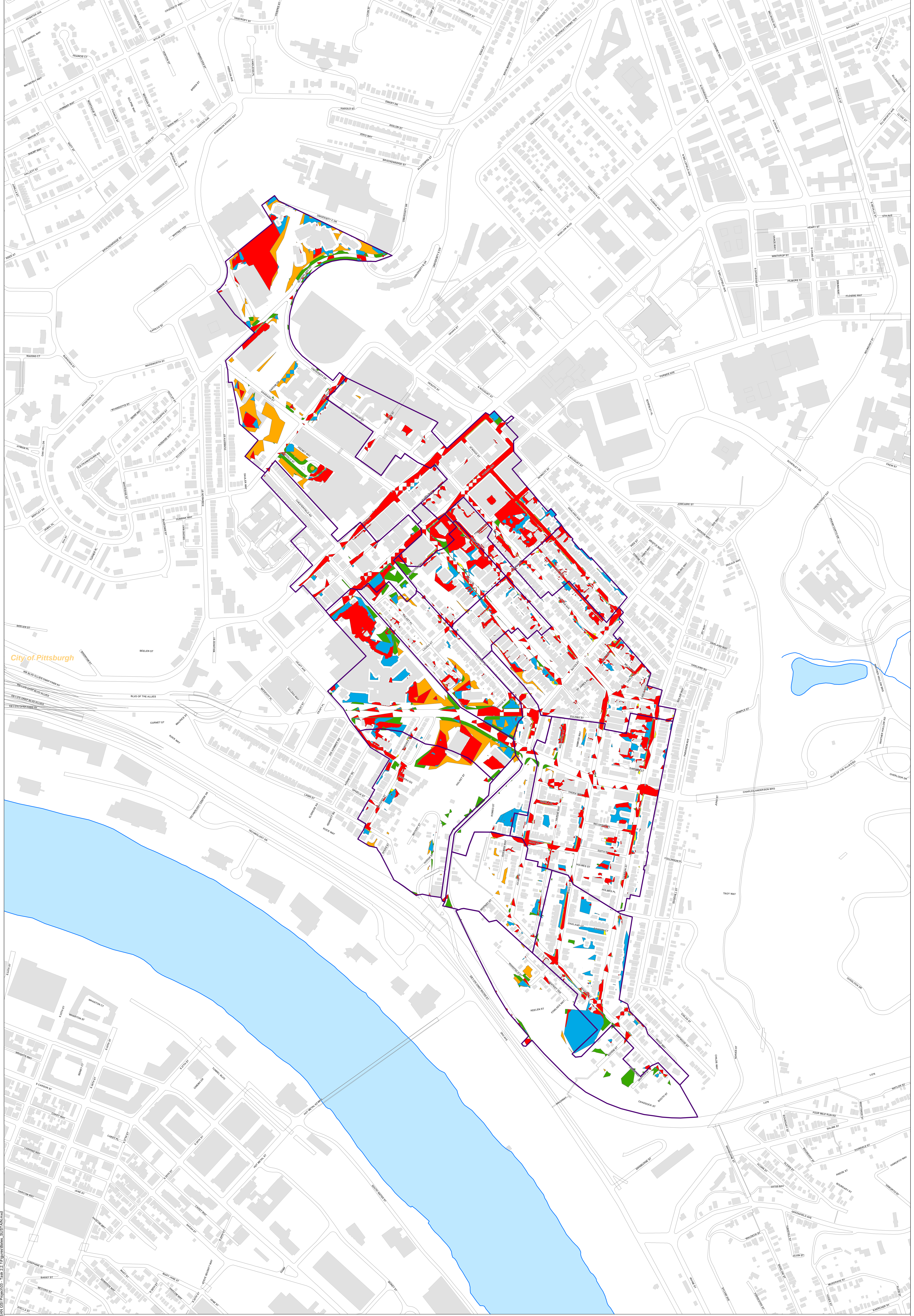
Bates Street - Concept Commercial/Institutional and Special Case GSI Projects

Based on the BMP features, 116 concept Commercial/Institutional and Special Case GSI Projects were identified covering 46 total acres and consisted of the following:

Table 5.24-3 - Summary of Identified Concept Commercial/Institutional and Special Case GSI Projects

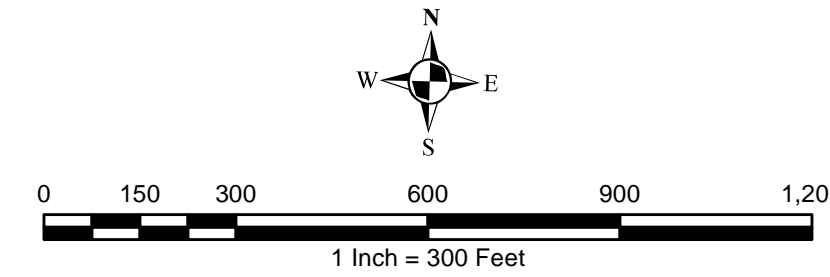
Concept GSI Technology or Special Case Project Category	Number of Projects	GSI Project Area (Acres)
Commercial/Institutional Permeable Pavement	48	17
Commercial/Institutional Green Roofs	54	20
State Route Permeable Pavement	14	9
Busway Permeable Pavement	0	0
Busway Bioretention	0	0

Project statistics including ALCOSAN POC, model subcatchment, BMP type, project area, area of project taxable, exempt, provisionally exempt and in the public right-of-way are provided in Concept Commercial / Institutional GSI Projects Table. Locations of all identified Concept Commercial / Institutional GSI projects are presented in the Concept Commercial / Institutional GSI Projects Figure (1).



City of Pittsburgh

- Permeable Pavement
- Vegetated Filter Strips
- Combined Sewer Subcatchment
- Bioretention
- Grass Swales
- Municipal Boundaries
- Infiltration Basin / Trench
- Constructed Wetlands



ALCOSAN GSI Project
Bates Street (M-19W thru M-19Y)
SUSTAIN BMP Features

Bates Street Concept Municipal Projects

June 16, 2014

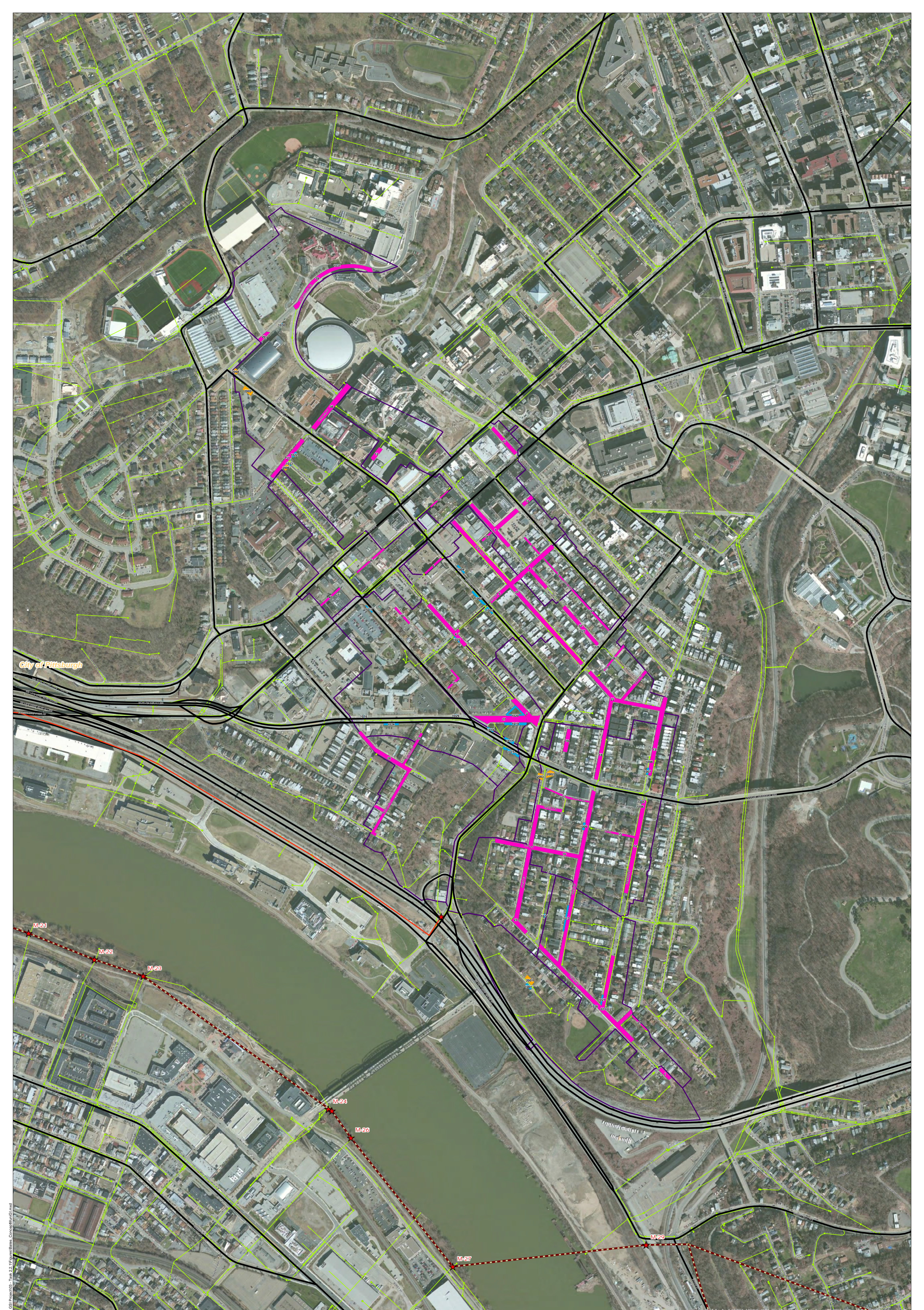
Revised October 7, 2014

*Note: The drainage area presented in this table is representative of the individual drainage area tributary to each concept municipal project without any revisions to account for overlap, without engineering judgment revisions applied, and without the drainage areas being clipped to their corresponding model subcatchments.

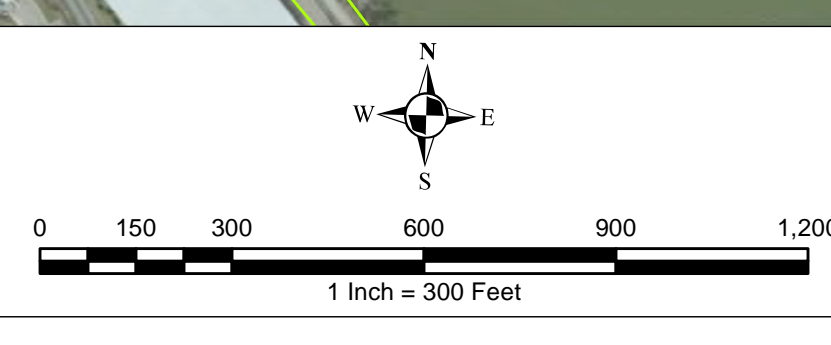
ALCOSAN POC	Model Subcatchment	Concept Municipal Project UID	BMP Type	Concept Municipal Project Area (acres)	Public ROW or Parcel		Concept Municipal Project Individual Drainage Area (acres)*	Concept Municipal Project Individual Project Impervious Drainage Area (acres)*
					Area of Municipal Project in Public ROW (acres)	Area of Municipal Project outside of Public ROW (acres)		
M-19W-00	M-19B-DWF-3/M-19B-C-3	BATE_1	PP	0.074	0.074	0.000	0.150	0.072
M-19W-00	M-19B-DWF-9/M-19B-C-10-B	BATE_2	PP	0.098	0.098	0.000	0.543	0.252
M-19W-00	M-19B-DWF-9/M-19B-C-15	BATE_3	PP	0.297	0.297	0.000	0.682	0.504
M-19W-00	M-19B-DWF-9/M-19B-C-11-A	BATE_4	PP	0.321	0.321	0.000	2.186	0.842
M-19W-00	M-19B-DWF-9/M-19B-C-10-A	BATE_5	PP	0.126	0.126	0.000	0.328	0.238
M-19W-00	M-19B-DWF-4/M-19B-C-4	BATE_6	PP	0.070	0.060	0.010	0.248	0.192
M-19W-00	M-19B-DWF-9/M-19B-C-11-B	BATE_7	PP	0.469	0.305	0.164	1.836	1.177
M-19W-00	M-19B-DWF-9/M-19B-C-10-B	BATE_8	PP	0.408	0.408	0.000	1.502	0.833
M-19W-00	M-19B-DWF-9/M-19B-C-11-B	BATE_9	PP	0.062	0.062	0.000	0.246	0.143
M-19W-00	M-19B-DWF-9/M-19B-C-11-B	BATE_10	PP	0.069	0.069	0.000	0.134	0.098
M-19W-00	M-19B-DWF-9/M-19B-C-11-B	BATE_11	PP	0.184	0.184	0.000	0.575	0.395
M-19W-00	M-19B-DWF-9/M-19B-C-11-B	BATE_12	PP	0.086	0.000	0.086	0.097	0.076
M-19X-00	M-19B-DWF-5/M-19B-C-14-B	BATE_13	PP	0.314	0.314	0.000	0.902	0.515
M-19X-00	M-19B-DWF-5/M-19B-C-14-B	BATE_14	PP	0.556	0.556	0.000	1.697	0.903
M-19X-00	M-19B-DWF-5/M-19B-C-14-B	BATE_15	PP	0.096	0.096	0.000	0.324	0.172
M-19X-00	M-19B-DWF-5/M-19B-C-14-B	BATE_16	PP	1.183	1.180	0.003	5.425	2.586
M-19X-00	M-19B-DWF-5/M-19B-C-14-B	BATE_17	PP	0.121	0.121	0.000	0.588	0.337
M-19X-00	M-19B-DWF-5/M-19B-C-14-B	BATE_18	PP	0.281	0.281	0.000	0.814	0.419
M-19X-00	M-19B-DWF-5/M-19B-C-14-B	BATE_19	PP	0.139	0.139	0.000	0.272	0.135
M-19Y-00	M-19B-DWF-7/M-19B-C-5	BATE_20	PP	0.061	0.061	0.000	0.099	0.086
M-19Y-00	M-19B-DWF-6/M-19B-C-13-A	BATE_21	PP	0.046	0.046	0.000	0.174	0.055
M-19Y-00	M-19B-DWF-6/M-19B-C-13-A	BATE_22	PP	1.548	1.548	0.000	4.899	2.136
M-19Y-00	M-19B-DWF-6/M-19B-C-13-B	BATE_23	PP	0.739	0.739	0.000	2.084	1.071
M-19Y-00	M-19B-DWF-6/M-19B-C-12	BATE_24	PP	0.153	0.153	0.000	0.727	0.350
M-19Y-00	M-19B-DWF-6/M-19B-C-12	BATE_25	PP	0.962	0.962	0.000	3.600	2.195
M-19Y-00	M-19B-DWF-6/M-19B-C-12	BATE_26	PP	0.091	0.083	0.008	0.257	0.143
M-19Y-00	M-19B-DWF-6/M-19B-C-7	BATE_27	PP	0.444	0.444	0.000	0.546	0.544

ALCOSAN POC	Model Subcatchment	Concept Municipal Project UID	BMP Type	Concept Municipal Project Area (acres)	Public ROW or Parcel		Concept Municipal Project Individual Drainage Area (acres)*	Concept Municipal Project Individual Project Impervious Drainage Area (acres)*
					Area of Municipal Project in Public ROW (acres)	Area of Municipal Project outside of Public ROW (acres)		
M-19Y-00	M-19B-DWF-6/M-19B-C-9	BATE_28	PP	0.788	0.788	0.000	3.950	2.202
M-19Y-00	M-19B-DWF-6/M-19B-C-8	BATE_29	PP	0.042	0.042	0.000	0.112	0.056
M-19Y-00	M-19B-DWF-6/M-19B-C-7	BATE_30	PP	0.070	0.067	0.003	0.277	0.110
M-19Y-00	M-19B-DWF-6/M-19B-C-7	BATE_31	PP	0.079	0.000	0.079	0.272	0.144
M-19Y-00	M-19B-DWF-6/M-19B-C-12	BATE_32	PP	0.277	0.277	0.000	0.749	0.389
M-19Y-00	M-19B-DWF-6/M-19B-C-12	BATE_33	PP	1.120	1.120	0.000	5.098	3.001
M-19Y-00	M-19B-DWF-6/M-19B-C-12	BATE_34	PP	0.040	0.039	0.001	0.072	0.051
M-19Y-00	M-19B-DWF-7/M-19B-C-5	BATE_35	PP	0.051	0.051	0.000	0.416	0.293
M-19Y-00	M-19B-DWF-8/M-19B-C-6	BATE_36	PP	0.104	0.079	0.025	0.558	0.353
M-19Y-00	M-19B-DWF-7/M-19B-C-5	BATE_37	PP	0.272	0.272	0.000	1.121	0.283
M-19Y-00	M-19B-DWF-7/M-19B-C-5	BATE_38	PP	0.417	0.386	0.031	1.648	0.998
M-19Y-00	M-19B-DWF-7/M-19B-C-5	BATE_39	PP	0.501	0.501	0.000	1.585	0.820
M-19Y-00	M-19B-DWF-8/M-19B-C-6	BATE_40	PP	0.081	0.075	0.006	0.323	0.254
M-19W-00	M-19B-DWF-3/M-19B-C-3	BATE_1001	BR	0.028	0.027	0.001	0.051	0.018
M-19W-00	M-19B-DWF-9/M-19B-C-10-A	BATE_1002	BR	0.033	0.026	0.007	0.071	0.035
M-19W-00	M-19B-DWF-9/M-19B-C-11-A	BATE_1003	BR	0.064	0.063	0.001	0.165	0.047
M-19W-00	M-19B-DWF-9/M-19B-C-11-A	BATE_1004	BR	0.029	0.025	0.004	0.092	0.026
M-19X-00	M-19B-DWF-5/M-19B-C-14-B	BATE_1005	BR	0.007	0.007	0.000	0.011	0.004
M-19X-00	M-19B-DWF-5/M-19B-C-14-B	BATE_1006	BR	0.003	0.003	0.000	0.004	0.001
M-19X-00	M-19B-DWF-5/M-19B-C-14-B	BATE_1007	BR	0.024	0.024	0.000	0.037	0.019
M-19X-00	M-19B-DWF-5/M-19B-C-14-B	BATE_1008	BR	0.009	0.009	0.000	0.011	0.003
M-19X-00	M-19B-DWF-5/M-19B-C-14-B	BATE_1009	BR	0.028	0.021	0.007	0.041	0.011
M-19X-00	M-19B-DWF-5/M-19B-C-14-B	BATE_1010	BR	0.005	0.000	0.005	0.007	0.001
M-19Y-00	M-19B-DWF-6/M-19B-C-8	BATE_1011	BR	0.020	0.020	0.000	0.022	0.002
M-19Y-00	M-19B-DWF-6/M-19B-C-13-A	BATE_1012	BR	0.009	0.008	0.001	0.014	0.007
M-19Y-00	M-19B-DWF-6/M-19B-C-13-A	BATE_1013	BR	0.076	0.076	0.000	0.153	0.042
M-19Y-00	M-19B-DWF-6/M-19B-C-13-B	BATE_1014	BR	0.009	0.000	0.009	0.013	0.002
M-19Y-00	M-19B-DWF-6/M-19B-C-8	BATE_1015	BR	0.063	0.055	0.008	0.211	0.077
M-19Y-00	M-19B-DWF-6/M-19B-C-8	BATE_1016	BR	0.010	0.009	0.001	0.011	0.011
M-19Y-00	M-19B-DWF-6/M-19B-C-8	BATE_1017	BR	0.043	0.027	0.016	0.113	0.049
M-19Y-00	M-19B-DWF-6/M-19B-C-8	BATE_1018	BR	0.027	0.018	0.009	0.058	0.026
M-19Y-00	M-19B-DWF-6/M-19B-C-7	BATE_1019	BR	0.116	0.085	0.031	0.134	0.046
M-19Y-00	M-19B-DWF-6/M-19B-C-7	BATE_1020	BR	0.120	0.120	0.000	0.241	0.080

ALCOSAN POC	Model Subcatchment	Concept Municipal Project UID	BMP Type	Concept Municipal Project Area (acres)	Public ROW or Parcel		Concept Municipal Project Individual Drainage Area (acres)*	Concept Municipal Project Individual Project Impervious Drainage Area (acres)*
					Area of Municipal Project in Public ROW (acres)	Area of Municipal Project outside of Public ROW (acres)		
M-19Y-00	M-19B-DWF-6/M-19B-C-12	BATE_1021	BR	0.010	0.010	0.000	0.021	0.008
M-19Y-00	M-19B-DWF-7/M-19B-C-5	BATE_1022	BR	0.022	0.009	0.013	0.038	0.008
M-19Y-00	M-19B-DWF-7/M-19B-C-5	BATE_1023	BR	0.009	0.000	0.009	0.020	0.008
M-19Y-00	M-19B-DWF-6/M-19B-C-8	BATE_1024	BR	0.044	0.044	0.000	0.052	0.020
M-19Y-00	M-19B-DWF-6/M-19B-C-7	BATE_1025	BR	0.017	0.017	0.000	0.039	0.018
M-19Y-00	M-19B-DWF-6/M-19B-C-12	BATE_1026	BR	0.004	0.004	0.000	0.006	0.002
M-19Y-00	M-19B-DWF-6/M-19B-C-13-A	BATE_1027	BR	0.026	0.024	0.002	0.053	0.019
M-19Y-00	M-19B-DWF-6/M-19B-C-13-A	BATE_1028	BR	0.012	0.010	0.002	0.018	0.000
M-19Y-00	M-19B-DWF-6/M-19B-C-8	BATE_1029	BR	0.023	0.017	0.006	0.028	0.008
M-19Y-00	M-19B-DWF-7/M-19B-C-5	BATE_1030	BR	0.012	0.001	0.011	0.014	0.000
M-19-Y-00	M-19B-DWF-7/M-19B-C-5	BATE_1031	BR	0.009	0.005	0.004	0.014	0.001
M-19W-00	M-19B-DWF-3/M-19B-C-3	BATE_2001	IB	0.062	0.018	0.044	0.096	0.011
M-19X-00	M-19B-DWF-5/M-19B-C-14-B	BATE_2002	IB	0.065	0.065	0.000	0.098	0.025
M-19X-00	M-19B-DWF-5/M-19B-C-14-B	BATE_2003	IB	0.043	0.043	0.000	0.060	0.016
M-19Y-00	M-19B-DWF-7/M-19B-C-5	BATE_2004	IB	0.034	0.007	0.027	0.051	0.001
M-19Y-00	M-19B-DWF-7/M-19B-C-5	BATE_2005	IB	0.068	0.025	0.043	0.109	0.033
M-19Y-00	M-19B-DWF-7/M-19B-C-5	BATE_2006	IB	0.032	0.000	0.032	0.038	0.000



- ★ ALCOSAN Structures
 - ALCOSAN Shallow-Cut Interceptor
 - - - ALCOSAN Deep Tunnel Interceptor
 - ★ One Overall Manholes
 - One Overall Sewerlines
- Municipal Projects**
- Infiltration Basin
 - Bioretention
 - Permeable Pavement
- Other Symbols**
- State Roads
 - Combined Sewer Subcatchment
 - Municipal Boundaries



ALCOSAN GSI Project
Bates Street (M-19W thru M-19Y)
Concept Municipal GSI Projects

File: I:\PFD\3103\3105 ALCOSAN GSI Project\03 - Task 2.11 Figures\Bates_ConceptMunGSI.mxd

Source: Esri, DeLorme, USGS, AIR, GeoEye, IGN, AeriSat, IGN, Esri, Swire, and the City of Pittsburgh

Bates Street Concept Commercial / Institutional Permeable Pavement, Green Roof, and Special Case GSI Projects: Summary Table

February 21, 2014
Revised October 10, 2014

ALCOSAN POC	Model Subcatchment	Concept Comm / Inst Project UID	BMP Type	Concept Municipal Project Area (acres)	Taxable (acres)	Exempt (acres)	Provisionally Exempt (acres)	Public ROW (acres)
M-19Y-00	M-19B-DWF-7/M-19B-C-5	BATE_6001	CPP	2.450	0.000	2.450	0.000	0.000
M-19Y-00	M-19B-DWF-7/M-19B-C-5	BATE_6002	CPP	0.301	0.000	0.301	0.000	0.000
M-19Y-00	M-19B-DWF-7/M-19B-C-5	BATE_6003	CPP	0.546	0.000	0.546	0.000	0.000
M-19W-00	M-19B-DWF-9/M-19B-C-11-B	BATE_6004	CPP	0.092	0.001	0.082	0.000	0.009
M-19W-00	M-19B-DWF-9/M-19B-C-11-B	BATE_6005	CPP	0.110	0.046	0.034	0.000	0.030
M-19W-00	M-19B-DWF-9/M-19B-C-11-B	BATE_6006	CPP	0.030	0.030	0.000	0.000	0.000
M-19W-00	M-19B-DWF-9/M-19B-C-11-B	BATE_6007	CPP	0.622	0.610	0.000	0.000	0.012
M-19W-00	M-19B-DWF-9/M-19B-C-11-B	BATE_6008	CPP	0.030	0.003	0.000	0.000	0.027
M-19Y-00	M-19B-DWF-6/M-19B-C-12	BATE_6009	CPP	0.044	0.010	0.000	0.000	0.034
M-19W-00	M-19B-DWF-9/M-19B-C-11-A	BATE_6010	CPP	0.374	0.231	0.004	0.000	0.139
M-19W-00	M-19B-DWF-9/M-19B-C-11-A	BATE_6011	CPP	0.048	0.000	0.048	0.000	0.000
M-19W-00	M-19B-DWF-4/M-19B-C-4	BATE_6012	CPP	0.462	0.462	0.000	0.000	0.000
M-19W-00	M-19B-DWF-9/M-19B-C-11-A	BATE_6013	CPP	0.261	0.011	0.084	0.000	0.166
M-19Y-00	M-19B-DWF-6/M-19B-C-12	BATE_6014	CPP	0.333	0.060	0.000	0.000	0.273
M-19W-00	M-19B-DWF-9/M-19B-C-15	BATE_6015	CPP	0.058	0.058	0.000	0.000	0.000
M-19Y-00	M-19B-DWF-6/M-19B-C-7	BATE_6016	CPP	0.545	0.539	0.000	0.000	0.006
M-19Y-00	M-19B-DWF-6/M-19B-C-8	BATE_6017	CPP	3.080	0.000	1.592	0.000	1.488
M-19Y-00	M-19B-DWF-6/M-19B-C-8	BATE_6018	CPP	0.856	0.000	0.856	0.000	0.000
M-19Y-00	M-19B-DWF-6/M-19B-C-8	BATE_6019	CPP	0.227	0.000	0.224	0.000	0.003
M-19Y-00	M-19B-DWF-6/M-19B-C-8	BATE_6020	CPP	0.160	0.159	0.000	0.000	0.001
M-19Y-00	M-19B-DWF-6/M-19B-C-8	BATE_6021	CPP	0.417	0.000	0.414	0.000	0.003
M-19Y-00	M-19B-DWF-6/M-19B-C-9	BATE_6022	CPP	0.069	0.000	0.000	0.000	0.069
M-19Y-00	M-19B-DWF-6/M-19B-C-8	BATE_6023	CPP	2.315	1.946	0.065	0.000	0.304
M-19Y-00	M-19B-DWF-6/M-19B-C-8	BATE_6024	CPP	0.528	0.000	0.000	0.528	0.000
M-19Y-00	M-19B-DWF-6/M-19B-C-12	BATE_6025	CPP	0.048	0.048	0.000	0.000	0.000

ALCOSAN POC	Model Subcatchment	Concept Comm / Inst Project UID	BMP Type	Concept Municipal Project Area (acres)	Taxable (acres)	Exempt (acres)	Provisionally Exempt (acres)	Public ROW (acres)
M-19Y-00	M-19B-DWF-6/M-19B-C-12	BATE_6026	CPP	0.056	0.025	0.000	0.000	0.031
M-19Y-00	M-19B-DWF-5/M-19B-C-14-B	BATE_6027	CPP	0.203	0.086	0.000	0.000	0.117
M-19Y-00	M-19B-DWF-6/M-19B-C-12	BATE_6028	CPP	0.052	0.045	0.000	0.000	0.007
M-19X-00	M-19B-DWF-5/M-19B-C-14-B	BATE_6029	CPP	0.118	0.046	0.000	0.000	0.072
M-19X-00	M-19B-DWF-5/M-19B-C-14-B	BATE_6030	CPP	0.072	0.021	0.000	0.000	0.051
M-19X-00	M-19B-DWF-5/M-19B-C-14-B	BATE_6031	CPP	0.177	0.000	0.171	0.000	0.006
M-19Y-00	M-19B-DWF-6/M-19B-C-13-A	BATE_6032	CPP	0.056	0.000	0.043	0.000	0.013
M-19W-00	M-19B-DWF-9/M-19B-C-11-A	BATE_6033	CPP	0.180	0.062	0.000	0.000	0.118
M-19W-00	M-19B-DWF-9/M-19B-C-10-A	BATE_6034	CPP	0.107	0.088	0.000	0.000	0.019
M-19X-00	M-19B-DWF-5/M-19B-C-14-B	BATE_6035	CPP	0.129	0.084	0.000	0.000	0.045
M-19X-00	M-19B-DWF-5/M-19B-C-14-B	BATE_6036	CPP	0.134	0.001	0.000	0.000	0.133
M-19X-00	M-19B-DWF-5/M-19B-C-14-B	BATE_6037	CPP	0.088	0.001	0.000	0.000	0.087
M-19X-00	M-19B-DWF-5/M-19B-C-14-B	BATE_6038	CPP	0.282	0.006	0.000	0.000	0.276
M-19X-00	M-19B-DWF-5/M-19B-C-14-B	BATE_6039	CPP	0.113	0.002	0.000	0.000	0.111
M-19Y-00	M-19B-DWF-7/M-19B-C-5	BATE_6040	CPP	0.045	0.000	0.039	0.000	0.006
M-19Y-00	M-19B-DWF-8/M-19B-C-6	BATE_6041	CPP	0.095	0.092	0.000	0.000	0.003
M-19Y-00	M-19B-DWF-6/M-19B-C-7	BATE_6042	CPP	0.193	0.000	0.177	0.000	0.016
M-19Y-00	M-19B-DWF-8/M-19B-C-6	BATE_6043	CPP	0.062	0.001	0.000	0.000	0.061
M-19Y-00	M-19B-DWF-6/M-19B-C-7	BATE_6044	CPP	0.040	0.025	0.000	0.000	0.015
M-19Y-00	M-19B-DWF-6/M-19B-C-9	BATE_6045	CPP	0.084	0.000	0.062	0.000	0.022
M-19Y-00	M-19B-DWF-6/M-19B-C-12	BATE_6046	CPP	0.086	0.018	0.000	0.000	0.068
M-19Y-00	M-19B-DWF-6/M-19B-C-12	BATE_6047	CPP	0.022	0.001	0.000	0.000	0.021
M-19Y-00	M-19B-DWF-7/M-19B-C-5	BATE_6048	CPP	0.183	0.000	0.079	0.000	0.104
M-19Y-00	M-19B-DWF-7/M-19B-C-5	BATE_7001	GR	0.182	0.051	0.000	0.000	0.131
M-19Y-00	M-19B-DWF-8/M-19B-C-6	BATE_7002	GR	0.275	0.132	0.000	0.000	0.143
M-19Y-00	M-19B-DWF-7/M-19B-C-5	BATE_7003	GR	0.217	0.000	0.004	0.000	0.213
M-19Y-00	M-19B-DWF-7/M-19B-C-5	BATE_7004	GR	0.571	0.000	0.556	0.000	0.015
M-19Y-00	M-19B-DWF-6/M-19B-C-7	BATE_7005	GR	0.133	0.000	0.123	0.000	0.010
M-19W-00	M-19B-DWF-9/M-19B-C-11-B	BATE_7006	GR	0.138	0.126	0.000	0.000	0.012
M-19Y-00	M-19B-DWF-6/M-19B-C-7	BATE_7007	GR	0.248	0.243	0.000	0.000	0.005

ALCOSAN POC	Model Subcatchment	Concept Comm / Inst Project UID	BMP Type	Concept Municipal Project Area (acres)	Taxable (acres)	Exempt (acres)	Provisionally Exempt (acres)	Public ROW (acres)
M-19Y-00	M-19B-DWF-8/M-19B-C-6	BATE_7008	GR	0.187	0.027	0.068	0.000	0.092
M-19Y-00	M-19B-DWF-8/M-19B-C-6	BATE_7009	GR	0.128	0.112	0.000	0.000	0.016
M-19Y-00	M-19B-DWF-6/M-19B-C-9	BATE_7010	GR	0.149	0.000	0.149	0.000	0.000
M-19W-00	M-19B-DWF-4/M-19B-C-4	BATE_7011	GR	0.362	0.012	0.000	0.000	0.350
M-19Y-00	M-19B-DWF-8/M-19B-C-6	BATE_7012	GR	0.170	0.004	0.162	0.000	0.004
M-19Y-00	M-19B-DWF-6/M-19B-C-12	BATE_7013	GR	0.127	0.127	0.000	0.000	0.000
M-19Y-00	M-19B-DWF-7/M-19B-C-5	BATE_7014	GR	1.371	0.000	1.371	0.000	0.000
M-19W-00	M-19B-DWF-9/M-19B-C-11-B	BATE_7015	GR	0.587	0.001	0.574	0.000	0.012
M-19Y-00	M-19B-DWF-6/M-19B-C-12	BATE_7016	GR	0.179	0.179	0.000	0.000	0.000
M-19W-00	M-19B-DWF-9/M-19B-C-10-B	BATE_7017	GR	0.115	0.000	0.113	0.000	0.002
M-19Y-00	M-19B-DWF-8/M-19B-C-6	BATE_7018	GR	0.484	0.004	0.056	0.000	0.424
M-19Y-00	M-19B-DWF-6/M-19B-C-9	BATE_7019	GR	0.146	0.000	0.078	0.000	0.068
M-19Y-00	M-19B-DWF-6/M-19B-C-12	BATE_7020	GR	0.196	0.005	0.000	0.000	0.191
M-19Y-00	M-19B-DWF-8/M-19B-C-6	BATE_7021	GR	0.265	0.000	0.265	0.000	0.000
M-19Y-00	M-19B-DWF-6/M-19B-C-8	BATE_7022	GR	0.452	0.000	0.451	0.000	0.001
M-19Y-00	M-19B-DWF-6/M-19B-C-12	BATE_7023	GR	0.136	0.125	0.000	0.000	0.011
M-19Y-00	M-19B-DWF-7/M-19B-C-5	BATE_7024	GR	2.480	0.190	1.954	0.000	0.336
M-19Y-00	M-19B-DWF-7/M-19B-C-5	BATE_7025	GR	0.142	0.000	0.001	0.000	0.141
M-19W-00	M-19B-DWF-9/M-19B-C-10-A	BATE_7026	GR	0.140	0.140	0.000	0.000	0.000
M-19W-00	M-19B-DWF-9/M-19B-C-11-A	BATE_7027	GR	0.149	0.000	0.149	0.000	0.000
M-19Y-00	M-19B-DWF-6/M-19B-C-8	BATE_7028	GR	0.204	0.000	0.157	0.047	0.000
M-19X-00	M-19B-DWF-5/M-19B-C-14-B	BATE_7029	GR	0.131	0.124	0.000	0.000	0.007
M-19Y-00	M-19B-DWF-8/M-19B-C-6	BATE_7030	GR	0.125	0.000	0.116	0.000	0.009
M-19X-00	M-19B-DWF-5/M-19B-C-14-B	BATE_7031	GR	0.196	0.013	0.000	0.000	0.183
M-19X-00	M-19B-DWF-5/M-19B-C-14-B	BATE_7032	GR	0.238	0.000	0.186	0.000	0.052
M-19Y-00	M-19B-DWF-8/M-19B-C-6	BATE_7033	GR	0.126	0.039	0.000	0.000	0.087
M-19Y-00	M-19B-DWF-6/M-19B-C-8	BATE_7034	GR	2.289	0.000	1.007	0.000	1.282
M-19Y-00	M-19B-DWF-6/M-19B-C-12	BATE_7035	GR	0.122	0.122	0.000	0.000	0.000
M-19Y-00	M-19B-DWF-6/M-19B-C-12	BATE_7035	GR	0.122	0.122	0.000	0.000	0.000
M-19Y-00	M-19B-DWF-6/M-19B-C-12	BATE_7035	GR	0.122	0.122	0.000	0.000	0.000

ALCOSAN POC	Model Subcatchment	Concept Comm / Inst Project UID	BMP Type	Concept Municipal Project Area (acres)	Taxable (acres)	Exempt (acres)	Provisionally Exempt (acres)	Public ROW (acres)
M-19W-00	M-19B-DWF-9/M-19B-C-11-A	BATE_7036	GR	0.244	0.000	0.242	0.000	0.002
M-19W-00	M-19B-DWF-9/M-19B-C-11-B	BATE_7038	GR	0.188	0.013	0.000	0.000	0.175
M-19W-00	M-19B-DWF-9/M-19B-C-11-B	BATE_7039	GR	0.328	0.002	0.317	0.000	0.009
M-19Y-00	M-19B-DWF-4/M-19B-C-4	BATE_7040	GR	0.255	0.249	0.006	0.000	0.000
M-19Y-00	M-19B-DWF-7/M-19B-C-5	BATE_7041	GR	0.138	0.000	0.138	0.000	0.000
M-19Y-00	M-19B-DWF-8/M-19B-C-6	BATE_7042	GR	0.138	0.000	0.138	0.000	0.000
M-19W-00	M-19B-DWF-9/M-19B-C-11-B	BATE_7043	GR	1.590	0.000	0.116	0.000	1.474
M-19Y-00	M-19B-DWF-7/M-19B-C-5	BATE_7044	GR	0.827	0.000	0.000	0.000	0.827
M-19Y-00	M-19B-DWF-9/M-19B-C-11-B	BATE_7045	GR	0.713	0.000	0.161	0.000	0.552
M-19W-00	M-19B-DWF-9/M-19B-C-11-B	BATE_7046	GR	0.186	0.170	0.000	0.000	0.016
M-19W-00	M-19B-DWF-9/M-19B-C-11-B	BATE_7048	GR	0.454	0.450	0.000	0.000	0.004
M-19W-00	M-19B-DWF-9/M-19B-C-11-B	BATE_7049	GR	0.628	0.125	0.049	0.000	0.454
M-19W-00	M-19B-DWF-4/M-19B-C-4	BATE_7050	GR	0.291	0.286	0.000	0.000	0.005
M-19W-00	M-19B-DWF-9/M-19B-C-11-B	BATE_7051	GR	0.160	0.148	0.000	0.000	0.012
M-19X-00	M-19B-DWF-6/M-19B-C-9	BATE_7052	GR	0.136	0.017	0.000	0.000	0.119
M-19Y-00	M-19B-DWF-6/M-19B-C-12	BATE_7053	GR	0.125	0.118	0.005	0.000	0.002
M-19Y-00	M-19B-DWF-9/M-19B-C-11-A	BATE_7054	GR	0.208	0.000	0.208	0.000	0.000
M-19Y-00	M-19B-DWF-6/M-19B-C-8	BATE_8001	SRPP	0.272	0.000	0.000	0.000	0.272
M-19Y-00	M-19B-DWF-6/M-19B-C-8	BATE_8002	SRPP	0.719	0.000	0.000	0.000	0.719
M-19Y-00	M-19B-DWF-6/M-19B-C-8	BATE_8003	SRPP	1.140	0.000	0.000	0.000	1.140
M-19Y-00	M-19B-DWF-6/M-19B-C-7	BATE_8004	SRPP	0.243	0.000	0.000	0.000	0.243
M-19X-00	M-19B-DWF-5/M-19B-C-14-B	BATE_8005	SRPP	0.991	0.000	0.000	0.000	0.991
M-19Y-00	M-19B-DWF-7/M-19B-C-5	BATE_8006	SRPP	0.779	0.000	0.000	0.000	0.779
M-19W-00	M-19B-DWF-9/M-19B-C-11-B	BATE_8007	SRPP	0.750	0.000	0.000	0.000	0.750
M-19W-00	M-19B-DWF-9/M-19B-C-11-B	BATE_8008	SRPP	0.885	0.000	0.000	0.000	0.885
M-19W-00	M-19B-DWF-9/M-19B-C-11-B	BATE_8009	SRPP	0.588	0.000	0.000	0.000	0.588
M-19W-00	M-19B-DWF-9/M-19B-C-10-B	BATE_8010	SRPP	0.722	0.000	0.000	0.000	0.722
M-19Y-00	M-19B-DWF-6/M-19B-C-12	BATE_8011	SRPP	0.479	0.000	0.000	0.000	0.479
M-19Y-00	M-19B-DWF-6/M-19B-C-12	BATE_8012	SRPP	0.526	0.000	0.000	0.000	0.526
M-19W-00	M-19B-DWF-4/M-19B-C-4	BATE_8013	SRPP	0.409	0.002	0.000	0.000	0.407

ALCOSAN POC	Model Subcatchment	Concept Comm / Inst Project UID	BMP Type	Concept Municipal Project Area (acres)	Taxable (acres)	Exempt (acres)	Provisionally Exempt (acres)	Public ROW (acres)
M-19W-00	M-19B-DWF-9/M-19B-C-11-A	BATE_8014	SRPP	0.488	0.000	0.000	0.000	0.488

