

5.22 Study Area 22 – Strip District

These findings apply to ALCOSAN Points of Connection A-14 through A-21, which include combined sewer systems in the City of Pittsburgh.

Strip District - BMP GIS Features

The SUSTAIN BMP siting tool analysis resulted in identification of a total of 3,247 BMP GIS Features covering 386 acres, which consisted of the following:

Table 5.22-1 - TOTAL SUSTAIN BMP Features Output

SUSTAIN BMP Feature Type	Number of Features	Area of BMP Features (Acres)
Permeable Pavement	1,300	139
Bioretention	773	110
Infiltration Basin/Trenches	65	9
Vegetated Filter Strips	284	62
Grass Swales	802	66
Constructed Wetlands	23	< 1

Locations of all identified BMP GIS features are presented on the SUSTAIN BMP Features Figure.

Strip District - Concept Municipal GSI Projects

Based on the BMP features, 109 concept Municipal GSI Projects were identified covering 15 total acres with a corresponding drainage area delineation of 53 total acres and consisted of the following:

Table 5.22-2 - Summary of Identified Concept Municipal GSI Projects

Concept GSI Technology	Number of Projects	GSI Project Area (Acres)	Project Drainage Area (Acres)
Permeable Pavement	79	12	47
Bioretention	27	2	6
Infiltration Basin/Trenches	3	< 1	< 1
Vegetated Filter Strips	0	0	0
Grass Swales	0	0	0
Constructed Wetlands	0	0	0

Project statistics including ALCOSAN POC, model subcatchment, BMP type, project area, area of project inside and outside of the public right-of-way, tributary drainage area, and tributary impervious drainage area are provided in the Concept Municipal Projects Table. Locations of all identified Concept Municipal GSI projects are presented in the Concept Municipal GSI Projects Figure (1) and the corresponding delineated tributary drainage areas are presented by BMP in the Individual Project Drainage Area Figures (3).

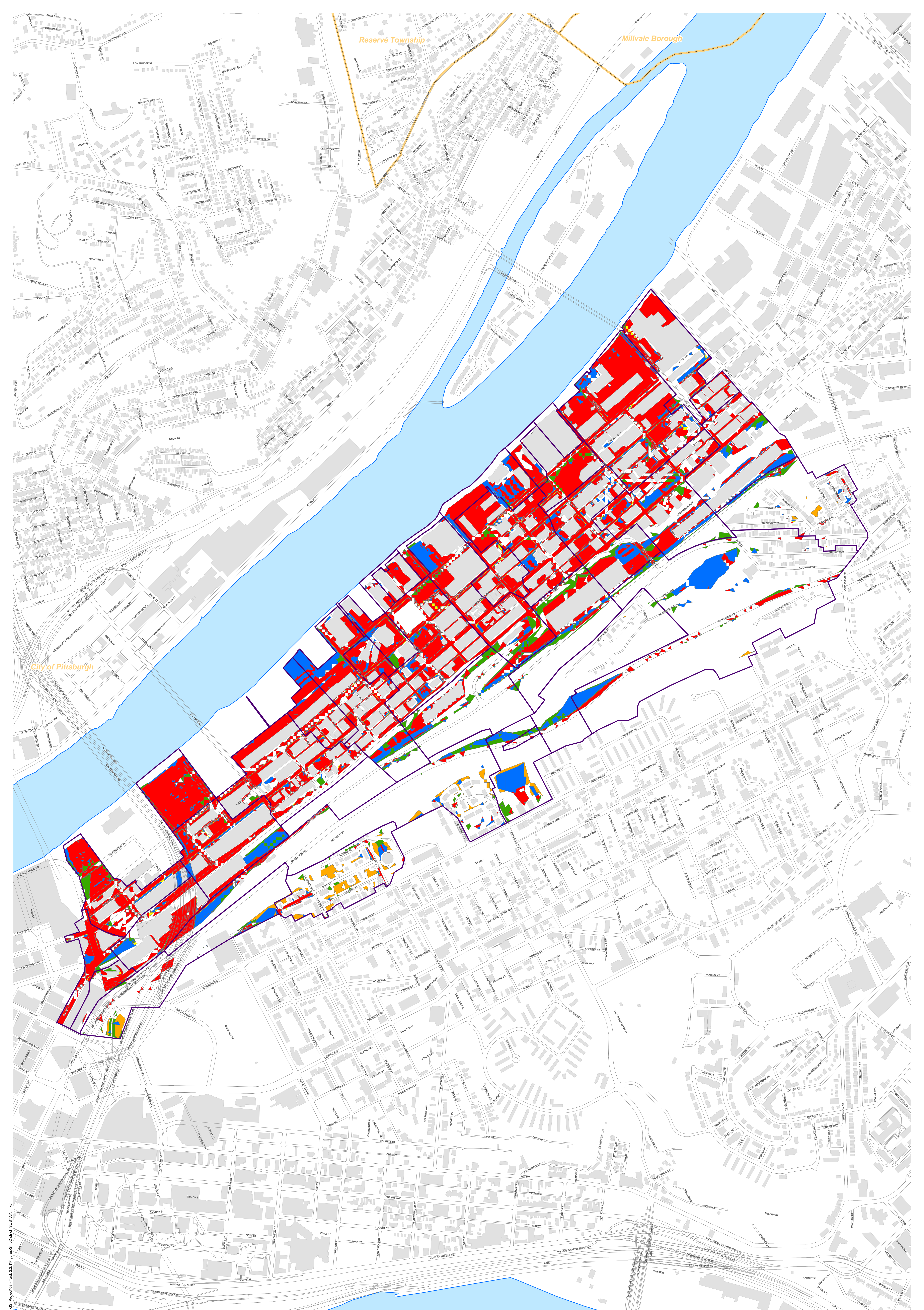
Strip District - Concept Commercial/Institutional and Special Case GSI Projects

Based on the BMP features, 163 concept Commercial/Institutional and Special Case GSI Projects were identified covering 112 total acres and consisted of the following:

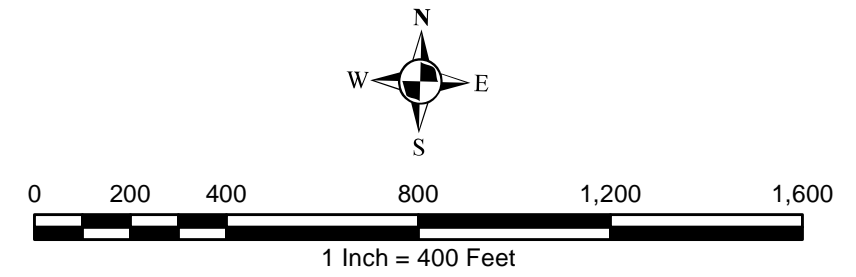
Table 5.22-3 - Summary of Identified Concept Commercial/Institutional and Special Case GSI Projects

Concept GSI Technology or Special Case Project Category	Number of Projects	GSI Project Area (Acres)
Commercial/Institutional Permeable Pavement	77	46
Commercial/Institutional Green Roofs	36	31
State Route Permeable Pavement	48	34
Busway Permeable Pavement	2	1
Busway Bioretention	0	0

Project statistics including ALCOSAN POC, model subcatchment, BMP type, project area, area of project taxable, exempt, provisionally exempt and in the public right-of-way are provided in Concept Commercial / Institutional GSI Projects Table. Locations of all identified Concept Commercial / Institutional GSI projects are presented in the Concept Commercial / Institutional GSI Projects Figure (1).



- Permeable Pavement
- Vegetated Filter Strips
- Combined Sewer Subcatchment
- Bioretention Basin
- Grass Swales
- Municipal Boundaries
- Infiltration Basin / Trench
- Constructed Wetlands



ALCOSAN GSI Project
Strip District (A-14 thru A-21)
SUSTAIN BMP Features

Strip District Concept Municipal Projects

June 16, 2014

Revised October 7, 2014

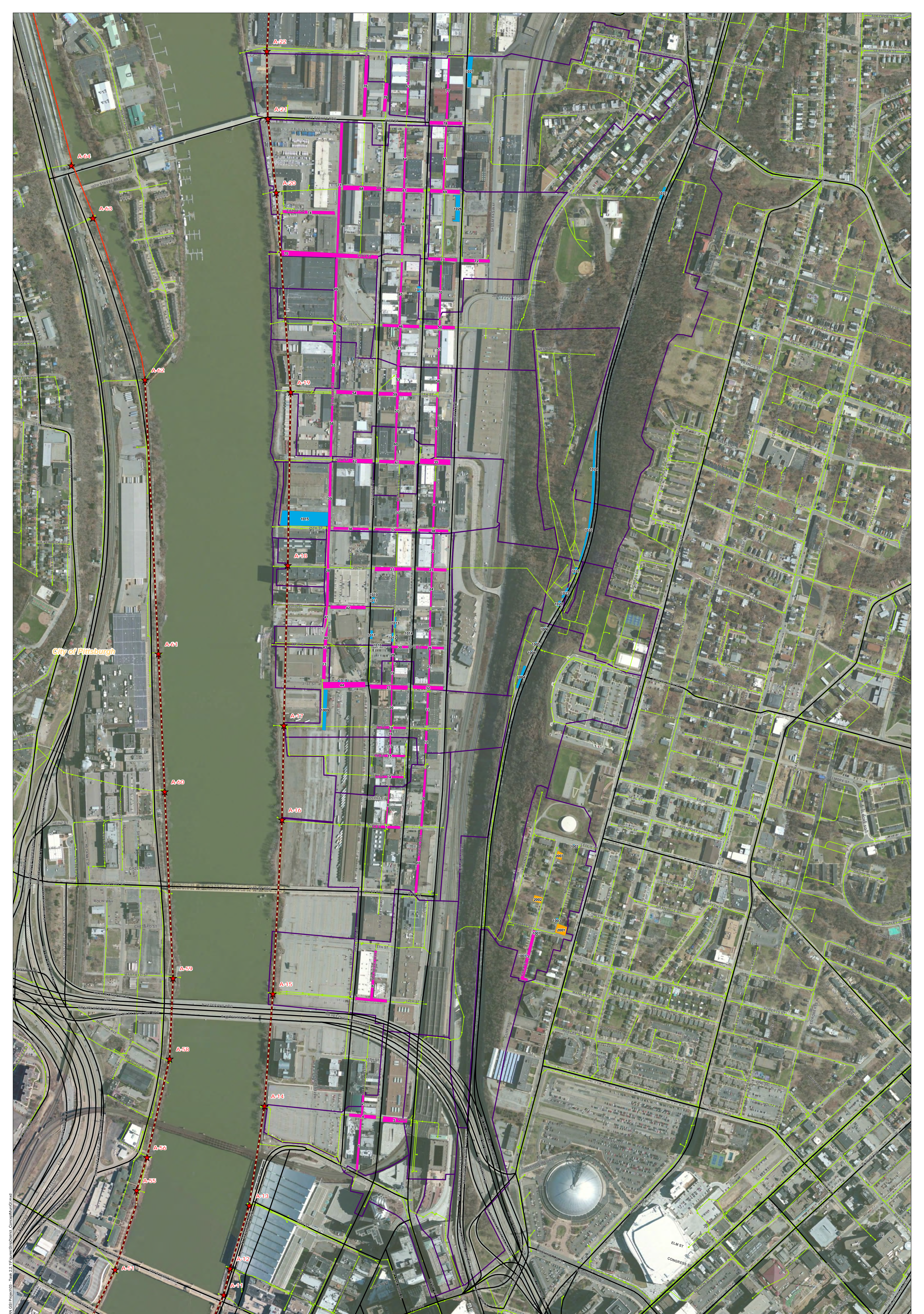
*Note: The drainage area presented in this table is representative of the individual drainage area tributary to each concept municipal project without any revisions to account for overlap, without engineering judgment revisions applied, and without the drainage areas being clipped to their corresponding model subcatchments.

ALCOSAN POC	Model Subcatchment	Concept Municipal Project UID	BMP Type	Concept Municipal Project Area (acres)	Public ROW or Parcel		Concept Municipal Project Individual Drainage Area (acres)*	Concept Municipal Project Individual Project Impervious Drainage Area (acres)*
					Area of Municipal Project in Public ROW (acres)	Area of Municipal Project outside of Public ROW (acres)		
A-14	A-14-DWF-1/A-14-C-1	STRP_1	PP	0.151	0.116	0.035	0.804	0.458
A-14	A-14-DWF-1/A-14-C-1	STRP_2	PP	0.065	0.064	0.001	0.153	0.128
A-14	A-14-DWF-2/A-14-C-2-C	STRP_3	PP	0.230	0.230	0.000	1.184	0.449
A-14	A-14-DWF-1/A-14-C-1	STRP_4	PP	0.126	0.126	0.000	0.409	0.173
A-14	A-14-DWF-1/A-14-C-1	STRP_5	PP	0.163	0.163	0.000	0.287	0.268
A-15	A-15-DWF-2/A-15-C-2	STRP_6	PP	0.305	0.286	0.019	1.359	0.884
A-16	A-16-DWF-1/A-16-C-1-A	STRP_7	PP	0.110	0.110	0.000	0.231	0.157
A-16	A-16-DWF-1/A-16-C-1-A	STRP_8	PP	0.070	0.070	0.000	0.576	0.495
A-16	A-16-DWF-1/A-16-C-1-A	STRP_9	PP	0.190	0.140	0.050	1.188	0.858
A-16	A-16-DWF-1/A-16-C-1-A	STRP_10	PP	0.216	0.170	0.046	1.524	0.957
A-17	A-17-DWF-2/A-17-C-2	STRP_11	PP	0.097	0.097	0.000	0.464	0.365
A-17	A-17-DWF-2/A-17-C-2	STRP_12	PP	0.074	0.052	0.022	0.256	0.216
A-17	A-17-DWF-2/A-17-C-2	STRP_13	PP	0.148	0.148	0.000	0.482	0.194
A-17	A-17-DWF-1/A-17-C-1	STRP_14	PP	0.090	0.090	0.000	0.357	0.191
A-17	A-17-DWF-1/A-17-C-1	STRP_15	PP	0.102	0.102	0.000	0.594	0.487
A-17	A-17-DWF-2/A-17-C-2	STRP_16	PP	0.017	0.017	0.000	0.047	0.041
A-17	A-17-DWF-1/A-17-C-1	STRP_17	PP	0.036	0.017	0.019	0.131	0.122
A-17	A-17-DWF-2/A-17-C-2	STRP_18	PP	0.094	0.094	0.000	0.175	0.155
A-17	A-17-DWF-2/A-17-C-2	STRP_19	PP	0.044	0.044	0.000	0.222	0.162
A-17	A-17-DWF-2/A-17-C-2	STRP_20	PP	0.071	0.071	0.000	0.547	0.395
A-17	A-17-DWF-2/A-17-C-2	STRP_21	PP	0.221	0.221	0.000	0.862	0.649
A-18	A-18-DWF-1/A-18-C-1-A	STRP_22	PP	0.087	0.087	0.000	0.525	0.470
A-18	A-18-DWF-1/A-18-C-1-A	STRP_23	PP	0.129	0.129	0.000	0.476	0.409
A-18	A-18-DWF-1/A-18-C-1-A	STRP_24	PP	0.084	0.069	0.015	0.370	0.330
A-18	A-18-DWF-1/A-18-C-1-A	STRP_25	PP	0.092	0.092	0.000	0.518	0.356
A-18	A-18-DWF-1/A-18-C-1-A	STRP_26	PP	0.105	0.105	0.000	0.431	0.247
A-18	A-18-DWF-1/A-18-C-1-A	STRP_27	PP	0.078	0.072	0.006	0.494	0.305
A-18	A-18-DWF-1/A-18-C-1-A	STRP_28	PP	0.247	0.247	0.000	0.690	0.469

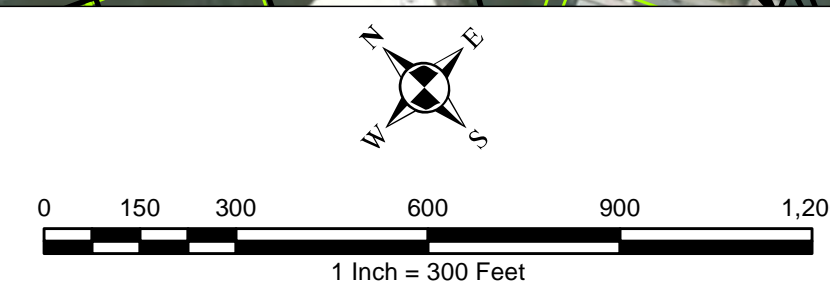
ALCOSAN POC	Model Subcatchment	Concept Municipal Project UID	BMP Type	Concept Municipal Project Area (acres)	Public ROW or Parcel		Concept Municipal Project Individual Drainage Area (acres)*	Concept Municipal Project Individual Project Impervious Drainage Area (acres)*
					Area of Municipal Project in Public ROW (acres)	Area of Municipal Project outside of Public ROW (acres)		
A-18	A-18-DWF-1/A-18-C-1-A	STRP_29	PP	0.031	0.031	0.000	0.075	0.051
A-18	A-18-DWF-1/A-18-C-1-A	STRP_30	PP	0.063	0.063	0.000	0.203	0.174
A-18	A-18-DWF-1/A-18-C-1-A	STRP_31	PP	0.192	0.191	0.001	0.697	0.362
A-18	A-18-DWF-1/A-18-C-1-A	STRP_32	PP	0.158	0.158	0.000	0.708	0.567
A-18X	A-18A-DWF-1/A-18A-C-1	STRP_33	PP	0.082	0.082	0.000	0.349	0.241
A-18X	A-18A-DWF-1/A-18A-C-1	STRP_34	PP	0.142	0.136	0.006	0.541	0.370
A-18X	A-18A-DWF-1/A-18A-C-1	STRP_35	PP	0.224	0.224	0.000	0.332	0.248
A-18X	A-18A-DWF-1/A-18A-C-1	STRP_36	PP	0.122	0.122	0.000	0.740	0.356
A-18X	A-18A-DWF-1/A-18A-C-1	STRP_37	PP	0.123	0.123	0.000	0.696	0.516
A-18X	A-18A-DWF-1/A-18A-C-1	STRP_38	PP	0.115	0.115	0.000	0.312	0.253
A-18X	A-18A-DWF-1/A-18A-C-1	STRP_39	PP	0.248	0.248	0.000	1.123	1.029
A-18Y	A-17B-DWF-1/A-17B-C-1	STRP_40	PP	0.062	0.062	0.000	0.094	0.094
A-18Y	A-17B-DWF-1/A-17B-C-1	STRP_41	PP	0.057	0.057	0.000	0.088	0.079
A-18Y	A-17B-DWF-1/A-17B-C-1	STRP_42	PP	0.166	0.166	0.000	0.462	0.364
A-18Z	A-17A-DWF-1	STRP_43	PP	0.015	0.015	0.000	0.017	0.017
A-18Z	A-17-DWF-2/A-17-C-2	STRP_44	PP	0.342	0.332	0.010	0.523	0.420
A-19X	A-19A-DWF-1/A-19A-C-1-A	STRP_45	PP	0.170	0.170	0.000	0.782	0.566
A-19X	A-19A-DWF-1/A-19A-C-1-A	STRP_46	PP	0.160	0.160	0.000	0.327	0.212
A-19X	A-19A-DWF-1/A-19A-C-1-A	STRP_47	PP	0.125	0.124	0.001	0.598	0.493
A-19X	A-19A-DWF-3	STRP_48	PP	0.075	0.000	0.075	0.112	0.112
A-19X	A-19A-DWF-3/A-19A-C-3	STRP_49	PP	0.210	0.000	0.210	0.439	0.332
A-19X	A-19A-DWF-1/A-19A-C-1-A	STRP_50	PP	0.161	0.160	0.001	0.537	0.348
A-19X	A-19A-DWF-1/A-19A-C-1-A	STRP_51	PP	0.078	0.078	0.000	0.554	0.529
A-19Y	A-19-DWF-1/A-19-C-1-A	STRP_52	PP	0.105	0.101	0.004	0.351	0.239
A-19Y	A-19-DWF-1/A-19-C-1-A	STRP_53	PP	0.086	0.086	0.000	0.401	0.337
A-19Y	A-19-DWF-1/A-19-C-1-A	STRP_54	PP	0.191	0.191	0.000	0.365	0.254
A-19Y	A-19-DWF-1	STRP_55	PP	0.184	0.000	0.184	0.256	0.227
A-19Y	A-19-DWF-1/A-19-C-1-A	STRP_56	PP	0.055	0.055	0.000	0.264	0.239
A-19Y	A-19-DWF-1/A-19-C-1-A	STRP_57	PP	0.158	0.134	0.024	0.981	0.717
A-19Y	A-19-DWF-1/A-19-C-1-A	STRP_58	PP	0.217	0.217	0.000	0.743	0.737
A-19Y	A-19-DWF-1/A-19-C-1-A	STRP_59	PP	0.170	0.170	0.000	0.291	0.243
A-19Z	A-18B-DWF-1/A-18B-C-1	STRP_60	PP	0.084	0.084	0.000	0.363	0.293
A-19Z	A-18B-DWF-1/A-18B-C-1	STRP_61	PP	0.169	0.169	0.000	0.561	0.342
A-19Z	A-18B-DWF-1/A-18B-C-1	STRP_62	PP	0.203	0.203	0.000	1.080	1.001

ALCOSAN POC	Model Subcatchment	Concept Municipal Project UID	BMP Type	Concept Municipal Project Area (acres)	Public ROW or Parcel		Concept Municipal Project Individual Drainage Area (acres)*	Concept Municipal Project Individual Project Impervious Drainage Area (acres)*
					Area of Municipal Project in Public ROW (acres)	Area of Municipal Project outside of Public ROW (acres)		
A-20	A-20-DWF-1/A-20-C-1-C	STRP_63	PP	0.150	0.150	0.000	0.622	0.549
A-20	A-20-DWF-1/A-20-C-1-A	STRP_64	PP	0.156	0.156	0.000	0.849	0.432
A-20	A-20-DWF-1/A-20-C-1-B	STRP_65	PP	0.167	0.155	0.012	0.658	0.523
A-20	A-20-DWF-1/A-20-C-1-A	STRP_66	PP	0.217	0.217	0.000	1.356	1.118
A-20	A-20-DWF-1/A-20-C-1-A	STRP_67	PP	0.188	0.188	0.000	0.419	0.338
A-20	A-20-DWF-1/A-20-C-1-A	STRP_68	PP	0.236	0.218	0.018	1.090	0.954
A-20	A-20-DWF-1/A-20-C-1-B	STRP_69	PP	0.158	0.158	0.000	0.512	0.326
A-20	A-20-DWF-1/A-20-C-1-B	STRP_70	PP	0.141	0.104	0.037	1.025	0.958
A-20	A-20-DWF-1/A-20-C-1-A	STRP_71	PP	0.463	0.003	0.460	2.529	2.450
A-20	A-20-DWF-1/A-20-C-1-B	STRP_72	PP	0.120	0.120	0.000	0.263	0.151
A-20	A-20-DWF-1/A-20-C-1-B	STRP_73	PP	0.132	0.132	0.000	0.427	0.310
A-20	A-20-DWF-1/A-20-C-1-A	STRP_74	PP	0.226	0.226	0.000	0.926	0.911
A-20	A-20-DWF-1/A-20-C-1-A	STRP_75	PP	0.618	0.618	0.000	1.922	1.634
A-21	A-21-DWF-1/A-21-C-1-A	STRP_76	PP	0.285	0.249	0.036	0.945	0.704
A-21	A-21-DWF-1/A-21-C-1-B	STRP_77	PP	0.170	0.170	0.000	0.950	0.858
A-21	A-21-DWF-1/A-21-C-1-B	STRP_78	PP	0.157	0.157	0.000	0.459	0.274
A-21	A-21-DWF-1/A-21-C-1-A	STRP_79	PP	0.144	0.144	0.000	0.422	0.322
A-14	A-14-DWF-2/A-14-C-2-C	STRP_1001	BR	0.012	0.004	0.008	0.021	0.005
A-14	A-14-DWF-2/A-14-C-2-C	STRP_1002	BR	0.017	0.009	0.008	0.022	0.003
A-14	A-14-DWF-2/A-14-C-2-C	STRP_1003	BR	0.017	0.003	0.014	0.025	0.009
A-14	A-14-DWF-2/A-14-C-2-B	STRP_1004	BR	0.087	0.066	0.021	0.121	0.030
A-14	A-14-DWF-2/A-14-C-2-B	STRP_1005	BR	0.011	0.008	0.003	0.018	0.000
A-14	A-14-DWF-2/A-14-C-2-B	STRP_1006	BR	0.009	0.009	0.000	0.017	0.001
A-14	A-14-DWF-2/A-14-C-2-C	STRP_1007	BR	0.012	0.012	0.000	0.017	0.004
A-14	A-14-DWF-2/A-14-C-2-B	STRP_1008	BR	0.009	0.008	0.001	0.014	0.003
A-17	A-17-DWF-2/A-17-C-2	STRP_1009	BR	0.208	0.000	0.208	0.421	0.197
A-18	A-18-DWF-1/A-18-C-1-A	STRP_1010	BR	0.007	0.005	0.002	0.011	0.000
A-18	A-18-DWF-1/A-18-C-1-A	STRP_1011	BR	0.026	0.022	0.004	0.040	0.001
A-18	A-18-DWF-1/A-18-C-1-A	STRP_1012	BR	0.023	0.011	0.012	0.050	0.003
A-18	A-18-DWF-1/A-18-C-1-A	STRP_1013	BR	0.025	0.020	0.005	0.069	0.069
A-18	A-18-DWF-1/A-18-C-1-A	STRP_1014	BR	0.007	0.006	0.001	0.010	0.005
A-18X	A-18A-DWF-1/A-18A-C-1	STRP_1015	BR	0.943	0.072	0.871	1.090	0.199
A-18Y	A-17B-DWF-1/A-17B-C-1	STRP_1016	BR	0.018	0.018	0.000	0.029	0.005
A-18Y	A-17B-DWF-1/A-17B-C-1	STRP_1017	BR	0.033	0.033	0.000	0.084	0.028

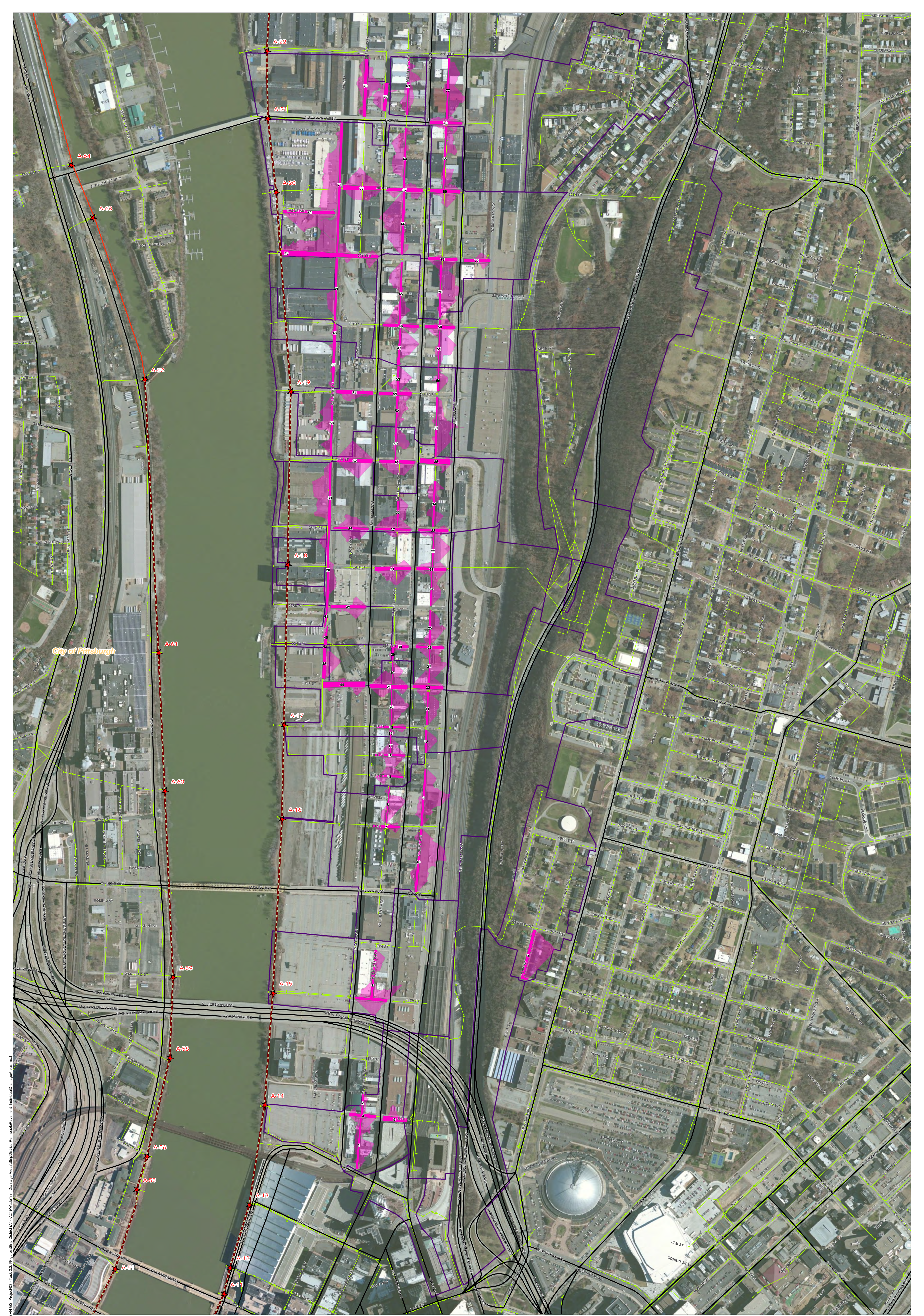
ALCOSAN POC	Model Subcatchment	Concept Municipal Project UID	BMP Type	Concept Municipal Project Area (acres)	Public ROW or Parcel		Concept Municipal Project Individual Drainage Area (acres)*	Concept Municipal Project Individual Project Impervious Drainage Area (acres)*
					Area of Municipal Project in Public ROW (acres)	Area of Municipal Project outside of Public ROW (acres)		
A-18Z	A-17A-DWF-1/A-17A-C-1	STRP_1018	BR	0.037	0.008	0.029	0.058	0.010
A-19X	A-19A-DWF-1/A-19A-C-1-A	STRP_1019	BR	0.032	0.014	0.018	0.055	0.054
A-19X	A-19A-DWF-2/A-18-C-1-B	STRP_1020	BR	0.024	0.014	0.010	0.039	0.010
A-19X	A-19A-DWF-2/A-19A-C-2-A	STRP_1021	BR	0.024	0.024	0.000	0.054	0.018
A-19X	A-19A-DWF-2/A-19A-C-2-B	STRP_1022	BR	0.172	0.139	0.033	1.523	0.452
A-19X	A-19A-DWF-2/A-18-C-1-B	STRP_1023	BR	0.036	0.023	0.013	0.078	0.029
A-19X	A-19A-DWF-1/A-19A-C-1-B	STRP_1024	BR	0.246	0.162	0.084	0.992	0.288
A-19X	A-19A-DWF-1/A-19A-C-1-B	STRP_1025	BR	0.048	0.048	0.000	0.065	0.017
A-20	A-20-DWF-1/A-20-C-1-B	STRP_1026	BR	0.178	0.066	0.112	0.275	0.102
A-21	A-21-DWF-1/A-21-C-1-B	STRP_1027	BR	0.191	0.121	0.070	0.382	0.112
A-14	A-14-DWF-2/A-14-C-2-C	STRP_2001	IB	0.139	0.062	0.077	0.188	0.039
A-14	A-14-DWF-2/A-14-C-2-C	STRP_2002	IB	0.080	0.017	0.063	0.122	0.026
A-14	A-14-DWF-2/A-14-C-2-C	STRP_2003	IB	0.063	0.027	0.036	0.087	0.025



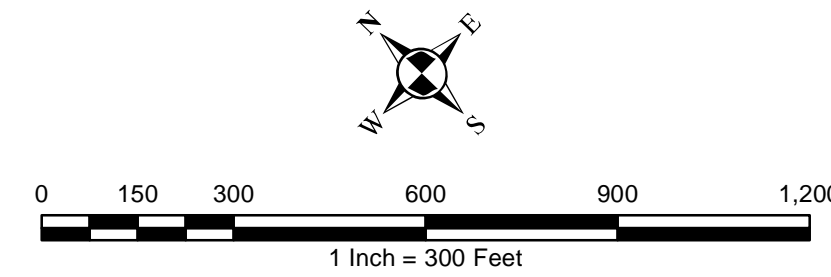
- ★ ALCOSAN Structures
 - ALCOSAN Shallow-Cut Interceptor
 - ALCOSAN Deep Tunnel Interceptor
 - One Overall Manholes
 - One Overall Sewerlines
- | | |
|---|--|
| <ul style="list-style-type: none"> Municipal Projects ■ Infiltration Basin ■ Bioretention ■ Permeable Pavement | <ul style="list-style-type: none"> — State Roads — Combined Sewer Subcatchment — Municipal Boundaries |
|---|--|



ALCOSAN GSI Project
Strip District (A-14 thru A-21)
Concept Municipal GSI Projects

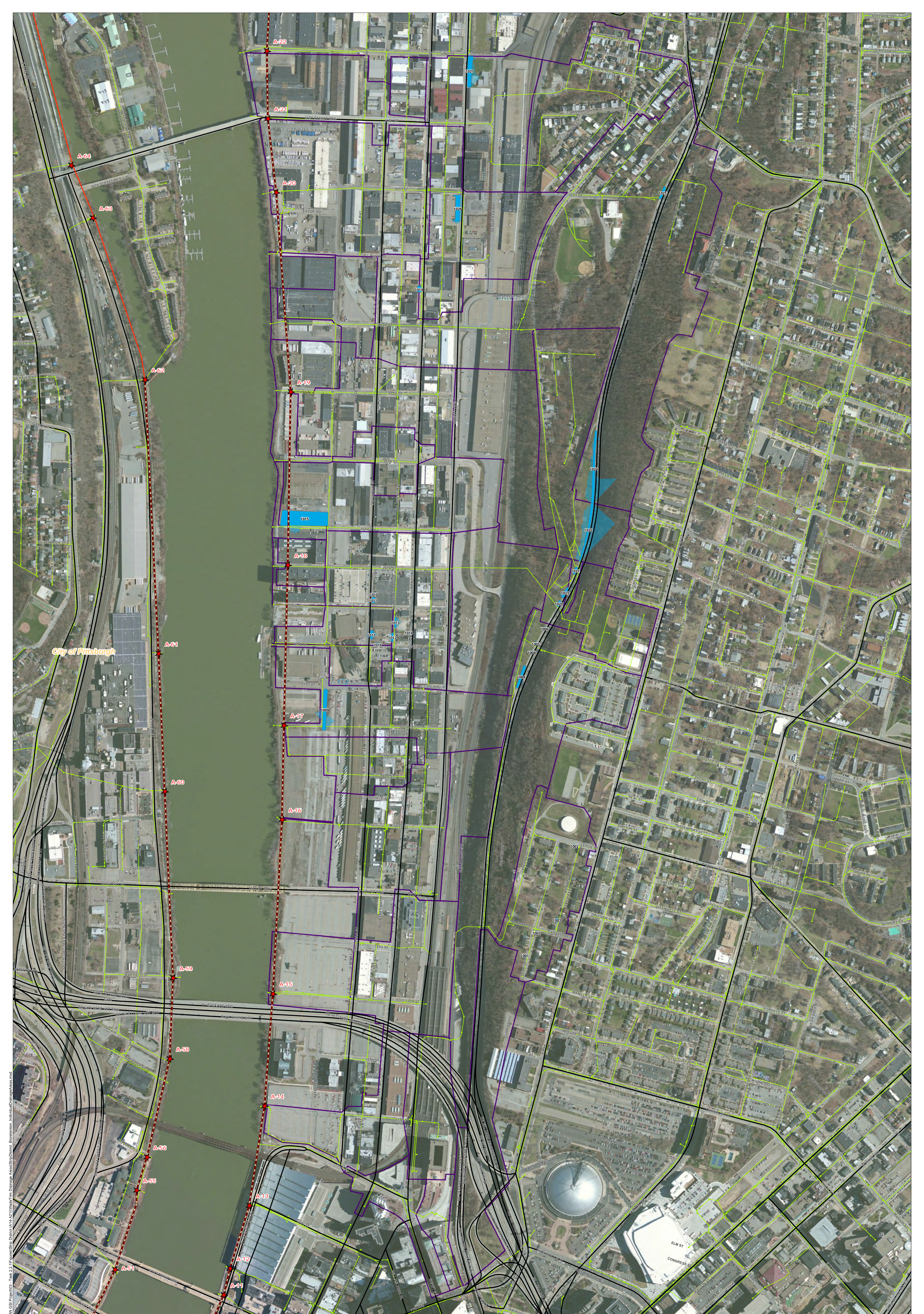


- ★ ALCOSAN Structures
- ALCOSAN Shallow-Cut Interceptor
- ALCOSAN Deep Tunnel Interceptor
- One Overall Manholes
- One Overall Sewerlines
- Permeable Pavement Municipal Projects
- Permeable Pavement Drainage Areas
- State Roads
- Combined Sewer Subcatchment
- Municipal Boundaries

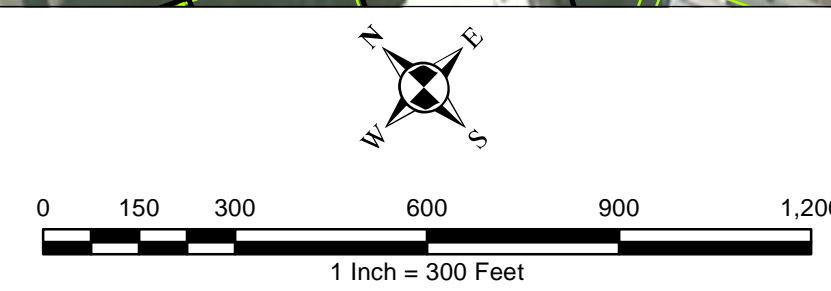


ALCOSAN GSI Project
Strip District (A-14 thru A-21)
Concept Municipal Permeable Pavement GSI Projects
Individual Project Drainage Areas

File: I:\P\34034036 ALCOSAN GSI Project\District (A-14-A-21)\Water Drainage Area\SH\SH\PermeablePavement_IndividualDrainageAreas.mxd
 Date: 2/1/2018 10:00:00 AM



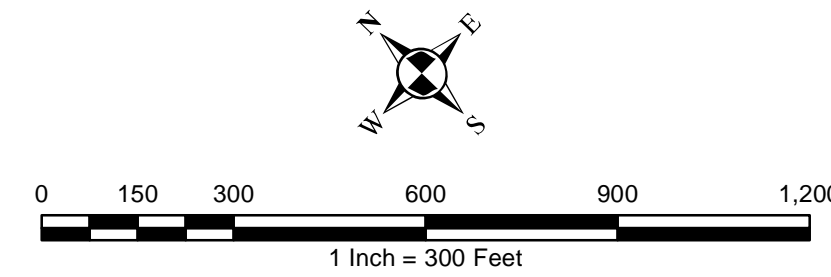
- ★ ALCOSAN Structures
- ALCOSAN Shallow-Cut Interceptor
- - - ALCOSAN Deep Tunnel Interceptor
- One Overall Manholes
- One Overall Sewerlines
- Bioretention Municipal Projects
- Bioretention Drainage Areas
- State Roads
- Combined Sewer Subcatchment
- Municipal Boundaries



ALCOSAN GSI Project
 Strip District (A-14 thru A-21)
 Concept Municipal Bioretention GSI Projects
 Individual Project Drainage Areas



- ★ ALCOSAN Structures
- ALCOSAN Shallow-Cut Interceptor
- ALCOSAN Deep Tunnel Interceptor
- One Overall Manholes
- One Overall Sewerlines
- Infiltration Basin Municipal Projects
- Infiltration Basin Drainage Areas
- State Roads
- Combined Sewer Subcatchment
- Municipal Boundaries



ALCOSAN GSI Project
Strip District (A-14 thru A-21)
Concept Municipal Infiltration Basin GSI Projects
Individual Project Drainage Areas

File: I:\P\34034036 ALCOSAN GSI Project\03 - Task 2.11 Figures\Strip District (A-14 thru A-21)\Water Drainage Area\Strip District - Individual Drainage Areas.mxd

Strip District Concept Commercial / Institutional Permeable Pavement, Green Roof, and Special Case GSI Projects: Summary Table

February 21, 2014
Revised October 10, 2014

ALCOSAN POC	Model Subcatchment	Concept Comm / Inst Project UID	BMP Type	Concept Municipal Project Area (acres)	Taxable (acres)	Exempt (acres)	Provisionally Exempt (acres)	Public ROW (acres)
A-14	A-14-DWF-1/A-14-C-1	STRP_6001	CPP	3.592	0.138	0.000	0.000	3.454
A-14	A-14-DWF-2/A-14-C-2-A	STRP_6002	CPP	0.216	0.131	0.085	0.000	0.000
A-14	A-14-DWF-1/A-14-C-1	STRP_6003	CPP	0.289	0.286	0.000	0.000	0.003
A-15	A-15-DWF-2	STRP_6004	CPP	6.123	2.381	0.387	0.000	3.355
A-15	A-15-DWF-2/A-15-C-2	STRP_6005	CPP	0.362	0.013	0.000	0.000	0.349
A-15	A-15-DWF-2/A-15-C-2	STRP_6006	CPP	0.473	0.473	0.000	0.000	0.000
A-15	A-15-DWF-2/A-15-C-2	STRP_6007	CPP	0.090	0.090	0.000	0.000	0.000
A-15	A-15-DWF-2/A-15-C-2	STRP_6008	CPP	0.352	0.318	0.026	0.000	0.008
A-16	A-16-DWF-1/A-16-C-1-A	STRP_6009	CPP	0.160	0.151	0.000	0.000	0.009
A-16	A-16-DWF-1/A-16-C-1-A	STRP_6010	CPP	0.149	0.140	0.000	0.000	0.009
A-16	A-16-DWF-1/A-16-C-1-A	STRP_6011	CPP	0.119	0.115	0.000	0.000	0.004
A-16	A-16-DWF-1/A-16-C-1-A	STRP_6012	CPP	0.090	0.088	0.000	0.000	0.002
A-16	A-16-DWF-1/A-16-C-1-A	STRP_6013	CPP	0.372	0.112	0.000	0.000	0.260
A-16	A-17-DWF-2/A-17-C-2	STRP_6014	CPP	0.257	0.256	0.000	0.000	0.001
A-16	A-16-DWF-1/A-16-C-1-A	STRP_6015	CPP	0.103	0.093	0.000	0.000	0.010
A-17	A-17-DWF-2/A-17-C-2	STRP_6016	CPP	0.102	0.099	0.000	0.000	0.003
A-17	A-17-DWF-2/A-17-C-2	STRP_6017	CPP	0.183	0.000	0.000	0.000	0.183
A-17	A-17-DWF-2/A-17-C-2	STRP_6018	CPP	0.038	0.029	0.000	0.000	0.009
A-17	A-17-DWF-1/A-17-C-1	STRP_6019	CPP	0.079	0.001	0.000	0.000	0.078
A-17	A-17-DWF-1/A-17-C-1	STRP_6020	CPP	0.088	0.088	0.000	0.000	0.000
A-17	A-17-DWF-2/A-17-C-2	STRP_6021	CPP	0.361	0.000	0.361	0.000	0.000
A-17	A-17-DWF-2/A-17-C-2	STRP_6022	CPP	0.350	0.000	0.000	0.000	0.350
A-18	A-18-DWF-1/A-18-C-1-B	STRP_6023	CPP	0.476	0.476	0.000	0.000	0.000
A-18	A-18-DWF-1/A-18-C-1-A	STRP_6024	CPP	0.210	0.204	0.000	0.000	0.006
A-18	A-18-DWF-1/A-18-C-1-A	STRP_6025	CPP	0.103	0.006	0.000	0.000	0.097

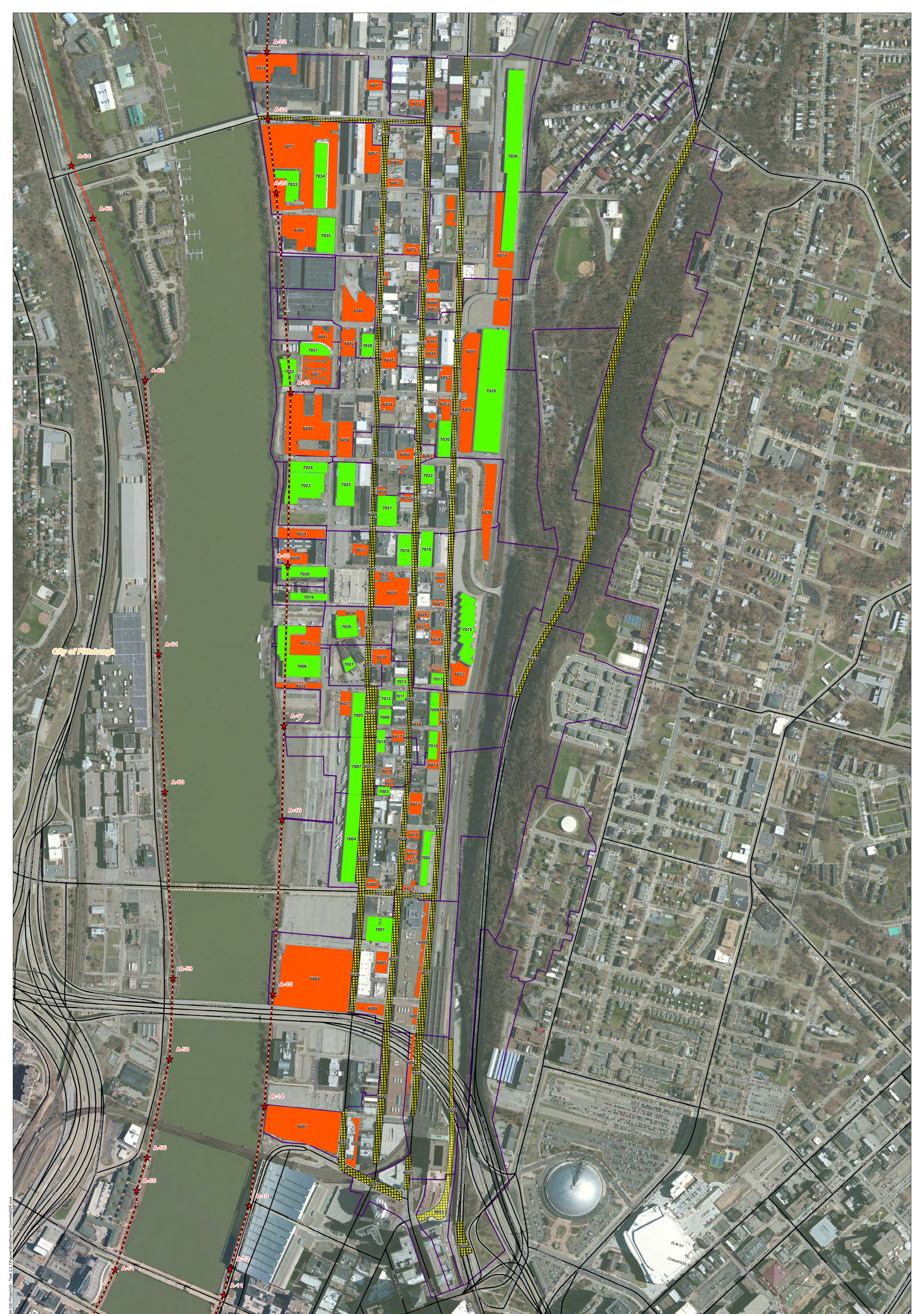
ALCOSAN POC	Model Subcatchment	Concept Comm / Inst Project UID	BMP Type	Concept Municipal Project Area (acres)	Taxable (acres)	Exempt (acres)	Provisionally Exempt (acres)	Public ROW (acres)
A-18	A-18-DWF-1/A-18-C-1-A	STRP_6026	CPP	0.114	0.017	0.000	0.000	0.097
A-18	A-18-DWF-1/A-18-C-1-A	STRP_6027	CPP	0.097	0.089	0.000	0.000	0.008
A-18	A-18-DWF-1/A-18-C-1-A	STRP_6028	CPP	0.107	0.044	0.000	0.000	0.063
A-18	A-18-DWF-1/A-18-C-1-A	STRP_6029	CPP	1.188	0.605	0.000	0.000	0.583
A-18	A-18-DWF-2/A-18-C-2	STRP_6030	CPP	0.459	0.448	0.000	0.000	0.011
A-18	A-18-DWF-1/A-18-C-1-A	STRP_6031	CPP	0.086	0.012	0.074	0.000	0.000
A-18	A-18-DWF-1/A-18-C-1-A	STRP_6032	CPP	0.192	0.185	0.000	0.000	0.007
A-18	A-18-DWF-1/A-18-C-1-A	STRP_6033	CPP	0.239	0.120	0.000	0.000	0.119
A-18X	A-18A-DWF-1	STRP_6034	CPP	0.621	0.002	0.000	0.006	0.613
A-18X	A-18A-DWF-1/A-18A-C-1	STRP_6035	CPP	0.106	0.033	0.000	0.000	0.073
A-18X	A-18A-DWF-1/A-18A-C-1	STRP_6036	CPP	1.294	0.530	0.000	0.056	0.708
A-18Y	A-17B-DWF-1/A-17B-C-1	STRP_6037	CPP	1.028	0.408	0.000	0.000	0.620
A-18Y	A-17B-DWF-1/A-17B-C-1	STRP_6038	CPP	0.334	0.333	0.000	0.000	0.001
A-18Z	A-17A-DWF-1/A-17A-C-1	STRP_6039	CPP	0.360	0.000	0.360	0.000	0.000
A-19X	A-19A-DWF-3/A-19A-C-3	STRP_6040	CPP	1.210	0.542	0.284	0.000	0.384
A-19X	A-19A-DWF-3	STRP_6041	CPP	0.444	0.096	0.000	0.000	0.348
A-19X	A-19A-DWF-3/A-19A-C-3	STRP_6042	CPP	0.530	0.017	0.000	0.004	0.509
A-19X	A-19A-DWF-1/A-19A-C-1-A	STRP_6043	CPP	0.194	0.143	0.000	0.000	0.051
A-19X	A-19A-DWF-1/A-19A-C-1-A	STRP_6044	CPP	0.144	0.033	0.000	0.000	0.111
A-19X	A-19A-DWF-1/A-19A-C-1-A	STRP_6045	CPP	0.361	0.354	0.000	0.000	0.007
A-19X	A-19A-DWF-1/A-19A-C-1-A	STRP_6046	CPP	1.181	0.464	0.000	0.000	0.717
A-19X	A-19A-DWF-1/A-19A-C-1-A	STRP_6047	CPP	0.814	0.814	0.000	0.000	0.000
A-19X	A-19A-DWF-1/A-19A-C-1-A	STRP_6048	CPP	0.061	0.061	0.000	0.000	0.000
A-19Y	A-19-DWF-1/A-19-C-1-A	STRP_6049	CPP	2.775	0.534	0.000	0.000	2.241
A-19Y	A-19-DWF-1/A-19-C-1-A	STRP_6050	CPP	0.763	0.468	0.000	0.000	0.295
A-19Y	A-19-DWF-1/A-19-C-1-A	STRP_6051	CPP	0.129	0.000	0.000	0.000	0.129
A-19Y	A-19-DWF-1/A-19-C-1-A	STRP_6052	CPP	0.314	0.000	0.305	0.000	0.009
A-19Y	A-19-DWF-1/A-19-C-1-A	STRP_6053	CPP	0.299	0.294	0.000	0.000	0.005
A-19Y	A-19-DWF-1/A-19-C-1-A	STRP_6054	CPP	0.259	0.000	0.255	0.000	0.004
A-19Y	A-19-DWF-1/A-19-C-1-A	STRP_6055	CPP	0.032	0.032	0.000	0.000	0.000

ALCOSAN POC	Model Subcatchment	Concept Comm / Inst Project UID	BMP Type	Concept Municipal Project Area (acres)	Taxable (acres)	Exempt (acres)	Provisionally Exempt (acres)	Public ROW (acres)
A-19Y	A-19-DWF-1/A-19-C-1-B	STRP_6056	CPP	1.542	1.542	0.000	0.000	0.000
A-19Y	A-19-DWF-1	STRP_6057	CPP	0.918	0.918	0.000	0.000	0.000
A-19Z	A-18B-DWF-1/A-18B-C-1	STRP_6058	CPP	0.094	0.091	0.000	0.000	0.003
A-19Z	A-18B-DWF-1/A-18B-C-1	STRP_6059	CPP	0.047	0.018	0.000	0.000	0.029
A-19Z	A-18B-DWF-1/A-18B-C-1	STRP_6060	CPP	0.224	0.217	0.000	0.000	0.007
A-19Z	A-18B-DWF-1/A-18B-C-1	STRP_6061	CPP	0.067	0.000	0.029	0.000	0.038
A-20	A-20-DWF-1/A-20-C-1-A	STRP_6062	CPP	0.828	0.828	0.000	0.000	0.000
A-20	A-20-DWF-1/A-20-C-1-A	STRP_6063	CPP	0.178	0.152	0.000	0.000	0.026
A-20	A-20-DWF-1/A-20-C-1-A	STRP_6064	CPP	0.102	0.100	0.000	0.000	0.002
A-20	A-20-DWF-1/A-20-C-1-B	STRP_6065	CPP	0.219	0.001	0.000	0.000	0.218
A-20	A-20-DWF-1/A-20-C-1-A	STRP_6066	CPP	1.427	0.000	1.416	0.000	0.011
A-20	A-20-DWF-1/A-20-C-1-B	STRP_6067	CPP	0.088	0.085	0.000	0.000	0.003
A-20	A-20-DWF-1/A-20-C-1-B	STRP_6068	CPP	0.125	0.016	0.000	0.000	0.109
A-20	A-20-DWF-1/A-20-C-1-B	STRP_6069	CPP	0.367	0.364	0.000	0.000	0.003
A-20	A-20-DWF-1/A-20-C-1-B	STRP_6070	CPP	0.361	0.000	0.361	0.000	0.000
A-20	A-20-DWF-1/A-20-C-1-A	STRP_6071	CPP	5.927	0.000	0.311	0.000	5.616
A-20	A-20-DWF-1/A-20-C-1-C	STRP_6072	CPP	0.144	0.007	0.000	0.000	0.137
A-20	A-20-DWF-1/A-20-C-1-A	STRP_6073	CPP	0.236	0.000	0.000	0.000	0.236
A-20	A-20-DWF-1/A-20-C-1-B	STRP_6074	CPP	1.053	1.053	0.000	0.000	0.000
A-20	A-20-DWF-1/A-20-C-1-A	STRP_6075	CPP	0.036	0.036	0.000	0.000	0.000
A-21	A-21-DWF-1/A-21-C-1-A	STRP_6076	CPP	1.354	1.342	0.000	0.012	0.000
A-21	A-21-DWF-1/A-21-C-1-A	STRP_6077	CPP	0.217	0.002	0.000	0.000	0.215
A-16	A-16-DWF-1/A-16-C-1-A	STRP_7001	GR	0.955	0.847	0.000	0.000	0.108
A-16	A-16-DWF-1/A-16-C-1-A	STRP_7002	GR	0.582	0.016	0.000	0.000	0.566
A-16	A-16-DWF-1/A-16-C-1-A	STRP_7003	GR	0.158	0.000	0.000	0.000	0.158
A-16	A-16-DWF-1/A-16-C-1-A	STRP_7004	GR	1.696	0.000	1.696	0.000	0.000
A-17	A-17-DWF-2/A-17-C-2	STRP_7005	GR	0.776	0.000	0.776	0.000	0.000
A-17	A-17-DWF-2/A-17-C-2	STRP_7006	GR	1.845	1.336	0.029	0.000	0.480
A-17	A-17-DWF-1/A-17-C-1	STRP_7007	GR	1.061	0.000	1.061	0.000	0.000
A-17	A-17-DWF-2/A-17-C-2	STRP_7008	GR	0.273	0.236	0.000	0.000	0.037

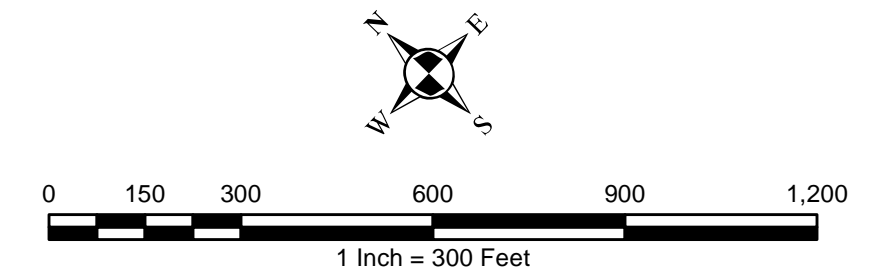
ALCOSAN POC	Model Subcatchment	Concept Comm / Inst Project UID	BMP Type	Concept Municipal Project Area (acres)	Taxable (acres)	Exempt (acres)	Provisionally Exempt (acres)	Public ROW (acres)
A-17	A-17-DWF-2/A-17-C-2	STRP_7009	GR	0.413	0.410	0.000	0.000	0.003
A-17	A-17-DWF-2/A-17-C-2	STRP_7010	GR	0.355	0.355	0.000	0.000	0.000
A-17	A-17-DWF-2/A-17-C-2	STRP_7011	GR	0.137	0.120	0.000	0.000	0.017
A-17	A-17-DWF-2/A-17-C-2	STRP_7012	GR	0.272	0.157	0.000	0.000	0.115
A-17	A-17-DWF-2/A-17-C-2	STRP_7013	GR	0.126	0.085	0.000	0.000	0.041
A-17	A-17-DWF-1/A-17-C-1	STRP_7014	GR	0.258	0.258	0.000	0.000	0.000
A-18	A-18-DWF-1/A-18-C-1-B	STRP_7015	GR	1.281	1.259	0.000	0.022	0.000
A-18	A-18-DWF-1/A-18-C-1-A	STRP_7016	GR	0.575	0.555	0.000	0.000	0.020
A-18	A-18-DWF-1/A-18-C-1-A	STRP_7017	GR	0.198	0.168	0.000	0.000	0.030
A-18	A-18-DWF-1/A-18-C-1-A	STRP_7018	GR	0.593	0.095	0.000	0.000	0.498
A-18	A-18-DWF-2	STRP_7019	GR	0.386	0.347	0.000	0.000	0.039
A-18	A-18-DWF-2/A-18-C-2	STRP_7020	GR	0.741	0.502	0.000	0.000	0.239
A-18X	A-18A-DWF-1/A-18A-C-1	STRP_7021	GR	0.826	0.814	0.000	0.000	0.012
A-18X	A-18A-DWF-1/A-18A-C-1	STRP_7022	GR	0.321	0.000	0.296	0.000	0.025
A-18X	A-18A-DWF-1/A-18A-C-1	STRP_7023	GR	1.412	0.107	0.000	0.000	1.305
A-18X	A-18A-DWF-1/A-18A-C-1	STRP_7024	GR	0.583	0.545	0.000	0.000	0.038
A-18X	A-18A-DWF-1/A-18A-C-1	STRP_7025	GR	1.075	1.024	0.000	0.000	0.051
A-18Y	A-17B-DWF-1/A-17B-C-1	STRP_7026	GR	0.631	0.630	0.000	0.000	0.001
A-18Z	A-17A-DWF-1/A-17A-C-1	STRP_7027	GR	0.180	0.179	0.000	0.001	0.000
A-19X	A-19A-DWF-3/A-19A-C-3	STRP_7028	GR	0.383	0.000	0.383	0.000	0.000
A-19Y	A-19-DWF-1/A-19-C-1-B	STRP_7029	GR	4.421	4.363	0.000	0.037	0.021
A-19Y	A-19-DWF-1/A-19-C-1-A	STRP_7030	GR	0.640	0.000	0.609	0.000	0.031
A-19Y	A-19-DWF-1	STRP_7031	GR	0.464	0.038	0.000	0.000	0.426
A-19Y	A-19-DWF-1	STRP_7032	GR	0.519	0.517	0.000	0.002	0.000
A-20	A-20-DWF-1/A-20-C-1-A	STRP_7033	GR	0.674	0.000	0.673	0.000	0.001
A-20	A-20-DWF-1/A-20-C-1-A	STRP_7034	GR	1.171	0.000	1.171	0.000	0.000
A-20	A-20-DWF-1/A-20-C-1-A	STRP_7035	GR	0.896	0.000	0.855	0.000	0.041
A-21	A-21-DWF-1/A-21-C-1-B	STRP_7036	GR	3.757	3.757	0.000	0.000	0.000
A-19X-00	A-19A-DWF-1/A-19A-C-1-B	STRP_8001	SRPP	3.700	0.000	0.055	0.000	3.645
A-19X-00	A-19A-DWF-1/A-19A-C-1-A	STRP_8002	SRPP	0.691	0.000	0.000	0.000	0.691

ALCOSAN POC	Model Subcatchment	Concept Comm / Inst Project UID	BMP Type	Concept Municipal Project Area (acres)	Taxable (acres)	Exempt (acres)	Provisionally Exempt (acres)	Public ROW (acres)
A-19X-00	A-19A-DWF-1/A-19A-C-1-A	STRP_8003	SRPP	0.338	0.000	0.000	0.000	0.338
A-19X-00	A-19A-DWF-1/A-19A-C-1-A	STRP_8004	SRPP	0.437	0.000	0.000	0.000	0.437
A-21-00	A-21-DWF-1/A-21-C-1-A	STRP_8005	SRPP	0.479	0.000	0.015	0.000	0.464
A-21-00	A-21-DWF-1/A-21-C-1-B	STRP_8006	SRPP	0.594	0.000	0.000	0.000	0.594
A-21-00	A-21-DWF-1/A-21-C-1-B	STRP_8007	SRPP	1.069	0.000	0.000	0.000	1.069
A-20-00	A-20-DWF-1/A-20-C-1-A	STRP_8008	SRPP	0.804	0.000	0.000	0.000	0.804
A-21-00	A-21-DWF-1/A-21-C-1-A	STRP_8009	SRPP	0.194	0.000	0.000	0.000	0.194
A-21-00	A-21-DWF-1/A-21-C-1-A	STRP_8010	SRPP	0.506	0.000	0.000	0.000	0.506
A-20-00	A-20-DWF-1/A-20-C-1-A	STRP_8011	SRPP	1.018	0.000	0.000	0.000	1.018
A-20-00	A-20-DWF-1/A-20-C-1-B	STRP_8012	SRPP	0.415	0.000	0.000	0.000	0.415
A-20-00	A-20-DWF-1/A-20-C-1-B	STRP_8013	SRPP	0.937	0.000	0.000	0.000	0.937
A-19Y-00	A-19-DWF-1/A-19-C-1-A	STRP_8014	SRPP	0.432	0.000	0.000	0.000	0.432
A-19Y-00	A-19-DWF-1/A-19-C-1-A	STRP_8015	SRPP	0.528	0.000	0.000	0.000	0.528
A-19Y-00	A-19-DWF-1/A-19-C-1-B	STRP_8016	SRPP	0.679	0.000	0.000	0.000	0.679
A-18X-00	A-18A-DWF-1/A-18A-C-1	STRP_8017	SRPP	0.537	0.000	0.000	0.000	0.537
A-18-00	A-18-DWF-1/A-18-C-1-A	STRP_8018	SRPP	0.914	0.000	0.000	0.000	0.914
A-18Y-00	A-17B-DWF-1/A-17B-C-1	STRP_8019	SRPP	0.260	0.000	0.000	0.000	0.260
A-18-00	A-18-DWF-1/A-18-C-1-A	STRP_8020	SRPP	1.155	0.002	0.000	0.000	1.153
A-19Z-00	A-18B-DWF-1/A-18B-C-1	STRP_8021	SRPP	0.165	0.000	0.000	0.000	0.165
A-19Z-00	A-18B-DWF-1/A-18B-C-1	STRP_8022	SRPP	0.383	0.000	0.000	0.000	0.383
A-19X-00	A-19A-DWF-2/A-19A-C-2-B	STRP_8023	SRPP	0.568	0.000	0.000	0.000	0.568
A-19X-00	A-19A-DWF-2/A-19A-C-2-A	STRP_8024	SRPP	0.594	0.000	0.001	0.000	0.593
A-18Z-00	A-17A-DWF-1/A-17A-C-1	STRP_8026	SRPP	0.304	0.000	0.000	0.000	0.304
A-17-00	A-17-DWF-2/A-17-C-2	STRP_8027	SRPP	0.821	0.000	0.256	0.000	0.565
A-17-00	A-17-DWF-1/A-17-C-1	STRP_8028	SRPP	0.972	0.000	0.394	0.000	0.578
A-17-00	A-17-DWF-1/A-17-C-1	STRP_8029	SRPP	0.280	0.000	0.000	0.000	0.280
A-15-00	A-15-DWF-2/A-15-C-2	STRP_8030	SRPP	0.628	0.000	0.000	0.000	0.628
A-15-00	A-15-DWF-2/A-15-C-2	STRP_8031	SRPP	1.239	0.000	0.000	0.000	1.239
A-16-00	A-16-DWF-1/A-16-C-1-A	STRP_8032	SRPP	1.951	0.004	0.548	0.000	1.399
A-16-00	A-16-DWF-1/A-16-C-1-A	STRP_8033	SRPP	0.207	0.000	0.000	0.000	0.207

ALCOSAN POC	Model Subcatchment	Concept Comm / Inst Project UID	BMP Type	Concept Municipal Project Area (acres)	Taxable (acres)	Exempt (acres)	Provisionally Exempt (acres)	Public ROW (acres)
A-16-00	A-16-DWF-1/A-16-C-1-A	STRP_8034	SRPP	0.769	0.000	0.000	0.000	0.769
A-16-00	A-16-DWF-1/A-16-C-1-A	STRP_8035	SRPP	1.060	0.002	0.000	0.000	1.058
A-16-00/A-15-00	A-16-DWF-1/A-16-C-1-A	STRP_8036	SRPP	0.239	0.000	0.000	0.000	0.239
A-15-00	A-15-DWF-2/A-15-C-2	STRP_8037	SRPP	1.134	0.062	0.000	0.000	1.072
A-14-00	A-14-DWF-2/A-14-C-2-A	STRP_8038	SRPP	0.739	0.116	0.090	0.000	0.533
A-14Z-00	A-14-DWF-3/A-14-C-4	STRP_8039	SRPP	0.259	0.000	0.095	0.000	0.164
A-18X-00	A-18A-DWF-1/A-18A-C-1	STRP_8040	SRPP	0.572	0.000	0.000	0.000	0.572
A-18-00	A-18-DWF-1/A-18-C-1-A	STRP_8041	SRPP	0.598	0.000	0.000	0.000	0.598
A-14-00	A-14-DWF-1/A-14-C-1	STRP_8042	SRPP	0.484	0.000	0.000	0.000	0.484
A-14-00	A-14-DWF-2/A-14-C-2-B	STRP_8044	SRPP	0.582	0.000	0.000	0.000	0.582
A-14-00	A-14-DWF-1/A-14-C-1	STRP_8045	SRPP	1.220	0.000	0.000	0.000	1.220
A-14Z-00	A-14-DWF-3/A-14-C-4	STRP_8047	SRPP	0.705	0.000	0.000	0.123	0.582
A-18X-00	A-18A-DWF-1/A-18A-C-1	STRP_8048	SRPP	0.228	0.000	0.000	0.000	0.228
A-17-00	A-17-DWF-2/A-17-C-2	STRP_8049	SRPP	0.421	0.000	0.000	0.000	0.421
A-14Z-00	A-14-DWF-3/A-14-C-5-B	STRP_8050	SRPP	0.461	0.000	0.000	0.000	0.461
A-17-00	A-17-DWF-2/A-17-C-2	STRP_8051	SRPP	0.450	0.000	0.000	0.000	0.450
A-14	A-14-DWF-2/A-14-C-2-A	STRP_8052	BWPP	0.812	0.046	0.396	0.132	0.238
A-14Z	A-14-DWF-3/A-14-C-5-A	STRP_8053	BWPP	0.648	0.209	0.226	0.083	0.130



- ★ ALCOSAN Structures
- ALCOSAN Shallow-Cut Interceptor
- - - ALCOSAN Deep Tunnel Interceptor
- Special Case
- Concept Commercial / Institutional Permeable Pavement Projects
- Concept Green Roof Projects
- State Roads
- Combined Sewer Subcatchment
- Municipal Boundaries



ALCOSAN GSI Project
Strip District (A-14 thru A-21)
Concept Commercial / Institutional,
Green Roof, and Special Case GSI Projects

File: I:\PROJECTS\ALCOSAN_GSI\Project\03 - Task 2.2.11 Figures\StripDistrict_CombinedCR.mxd