

5.21 Study Area 21 – Shadyside / Friendship

These findings apply to ALCOSAN Point of Connection A-22, which includes combined sewer systems in the City of Pittsburgh.

Shadyside / Friendship - BMP GIS Features

The SUSTAIN BMP siting tool analysis resulted in identification of a total of 13,476 BMP GIS Features covering 699 acres, which consisted of the following:

Table 5.21-1 - TOTAL SUSTAIN BMP Features Output

SUSTAIN BMP Feature Type	Number of Features	Area of BMP Features (Acres)
Permeable Pavement	4,300	237
Bioretention	3,769	202
Infiltration Basin/Trenches	316	22
Vegetated Filter Strips	1,161	94
Grass Swales	3,854	141
Constructed Wetlands	76	1

Locations of all identified BMP GIS features are presented on the SUSTAIN BMP Features Figure.

Shadyside / Friendship - Concept Municipal GSI Projects

Based on the BMP features, 449 concept Municipal GSI Projects were identified covering 83 total acres with a corresponding drainage area delineation of 715 total acres and consisted of the following:

Table 5.21-2 - Summary of Identified Concept Municipal GSI Projects

Concept GSI Technology	Number of Projects	GSI Project Area (Acres)	Project Drainage Area (Acres)
Permeable Pavement	195	76	616
Bioretention	241	7	86
Infiltration Basin/Trenches	10	1	9
Vegetated Filter Strips	2	< 1	2
Grass Swales	1	< 1	1
Constructed Wetlands	0	0	0

Project statistics including ALCOSAN POC, model subcatchment, BMP type, project area, area of project inside and outside of the public right-of-way, tributary drainage area, and tributary impervious drainage area are provided in the Concept Municipal Projects Table. Locations of all identified Concept Municipal GSI projects are presented in the Concept Municipal GSI Projects Figure (1) and the corresponding delineated tributary drainage areas are presented by BMP in the Individual Project Drainage Area Figures (5).

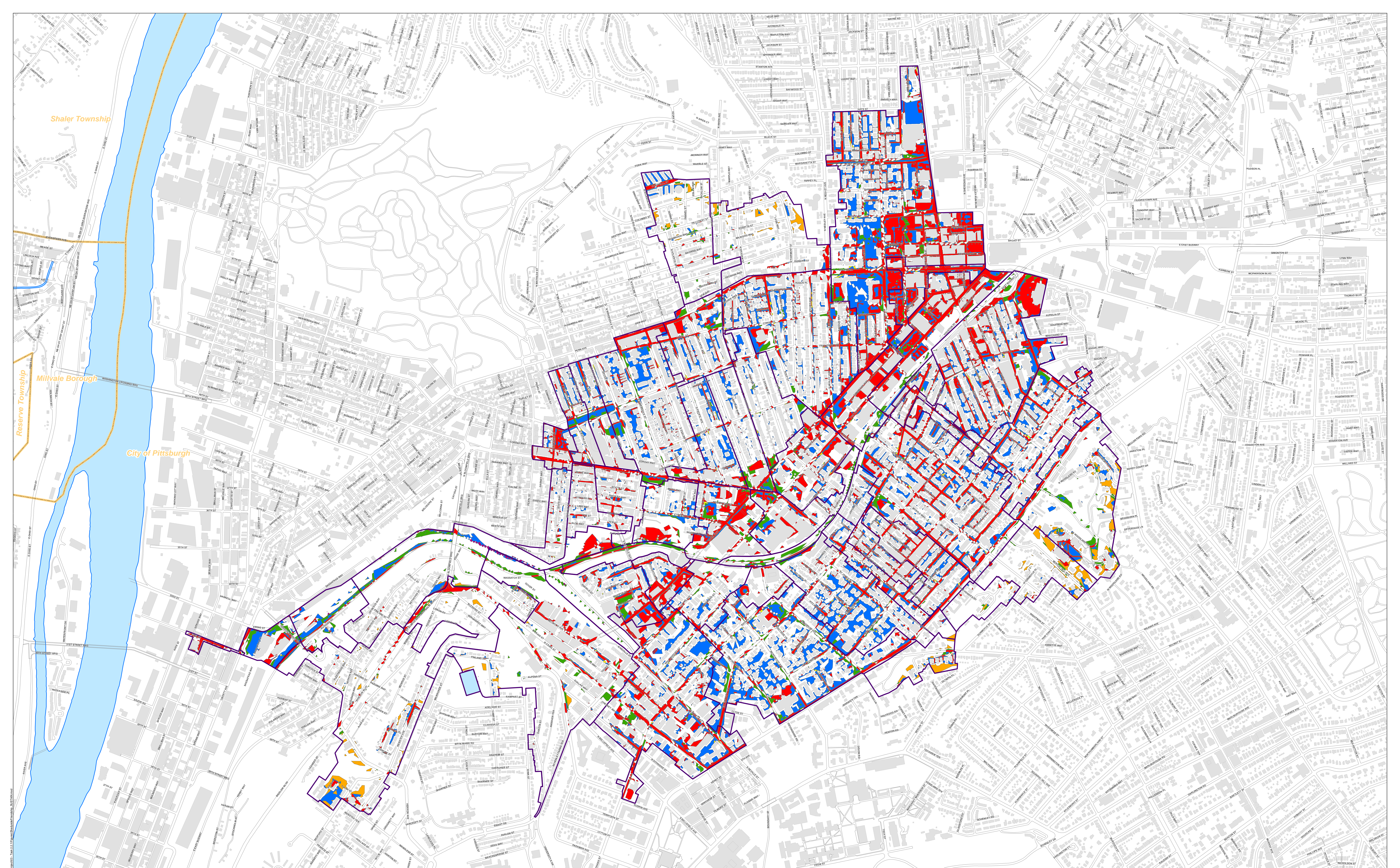
Shadyside / Friendship - Concept Commercial/Institutional and Special Case GSI Projects

Based on the BMP features, 579 concept Commercial/Institutional and Special Case GSI Projects were identified covering 229 total acres and consisted of the following:

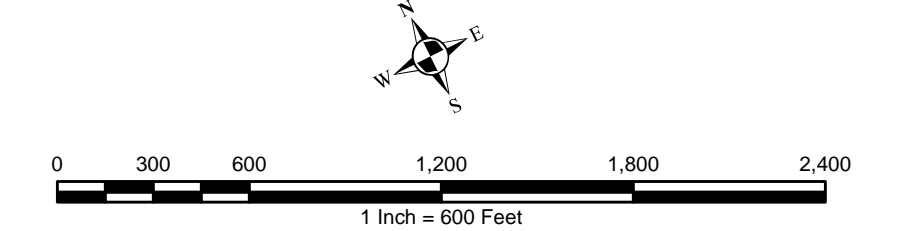
Table 5.21-3 - Summary of Identified Concept Commercial/Institutional and Special Case GSI Projects

Concept GSI Technology or Special Case Project Category	Number of Projects	GSI Project Area (Acres)
Commercial/Institutional Permeable Pavement	168	53
Commercial/Institutional Green Roofs	315	99
State Route Permeable Pavement	96	76
Busway Permeable Pavement	0	0
Busway Bioretention	0	0

Project statistics including ALCOSAN POC, model subcatchment, BMP type, project area, area of project taxable, exempt, provisionally exempt and in the public right-of-way are provided in Concept Commercial / Institutional GSI Projects Table. Locations of all identified Concept Commercial / Institutional GSI projects are presented in the Concept Commercial / Institutional GSI Projects Figure (1).



- Permeable Pavement
- Bioretention Basin
- Grass Swales
- Infiltration Basin / Trench
- Vegetated Filter Strips
- Constructed Wetlands
- Combined Sewer Subcatchment
- Municipal Boundaries



ALCOSAN GSI Project
 Shadyside / Friendship (A-22)
 SUSTAIN BMP Features

Shadyside-Friendship Concept Municipal Projects

June 13, 2014

Revised October 7, 2014

*Note: The drainage area presented in this table is representative of the individual drainage area tributary to each concept municipal project without any revisions to account for overlap, without engineering judgment revisions applied, and without the drainage areas being clipped to their corresponding model subcatchments.

ALCOSAN POC	Model Subcatchment	Concept Municipal Project UID	BMP Type	Concept Municipal Project Area (acres)	Public ROW or Parcel		Concept Municipal Project Individual Drainage Area (acres)*	Concept Municipal Project Individual Drainage Area (acres)*
					Area of Municipal Project in Public ROW (acres)	Area of Municipal Project outside of Public ROW (acres)		
A-22-00	A-22-DWF-13/A-22-C-25	SSFR_1	PP	0.483	0.483	0.000	2.646	2.113
A-22-00	A-22-DWF-13/A-22-C-25	SSFR_2	PP	0.120	0.120	0.000	0.786	0.487
A-22-00	A-22-DWF-3/A-22-C-3	SSFR_3	PP	0.106	0.106	0.000	0.881	0.256
A-22-00	A-22-DWF-3/A-22-C-3	SSFR_4	PP	0.273	0.273	0.000	1.957	0.720
A-22-00	A-22-DWF-1/A-22-C-1-B	SSFR_5	PP	0.083	0.083	0.000	0.974	0.379
A-22-00	A-22-DWF-1/A-22-C-1-B	SSFR_6	PP	0.062	0.062	0.000	0.129	0.020
A-22-00	A-22-DWF-1/A-22-C-1-B	SSFR_7	PP	0.113	0.113	0.000	0.590	0.328
A-22-00	A-22-DWF-1/A-22-C-1-B	SSFR_8	PP	0.319	0.319	0.000	1.282	0.579
A-22-00	A-22-DWF-5/A-22-C-10	SSFR_9	PP	1.168	1.148	0.020	4.918	2.850
A-22-00	A-22-DWF-5/A-22-C-7-B	SSFR_10	PP	0.375	0.375	0.000	3.685	1.605
A-22-00	A-22-DWF-5/A-22-C-7-A	SSFR_11	PP	0.938	0.938	0.000	5.458	3.894
A-22-00	A-22-DWF-5/A-22-C-7-A	SSFR_12	PP	1.066	1.066	0.000	22.272	9.165
A-22-00	A-22-DWF-7/A-22-C-9	SSFR_13	PP	0.705	0.705	0.000	3.032	1.350
A-22-00	A-22-DWF-5/A-22-C-7-A	SSFR_14	PP	0.895	0.890	0.005	12.451	7.133
A-22-00	A-22-DWF-5/A-22-C-7-A	SSFR_15	PP	0.456	0.456	0.000	2.837	1.097
A-22-00	A-22-DWF-7/A-22-C-11-B	SSFR_16	PP	0.820	0.817	0.003	3.320	1.269
A-22-00	A-22-DWF-5/A-22-C-6-A	SSFR_17	PP	0.152	0.152	0.000	0.622	0.325
A-22-00	A-22-DWF-7/A-22-C-11-A	SSFR_18	PP	0.097	0.000	0.097	2.693	1.288
A-22-00	A-22-DWF-7/A-22-C-11-A	SSFR_19	PP	0.160	0.157	0.003	0.556	0.280
A-22-00	A-22-DWF-7/A-22-C-11-B	SSFR_20	PP	0.179	0.179	0.000	3.179	1.018
A-22-00	A-22-DWF-7/A-22-C-11-B	SSFR_21	PP	0.622	0.622	0.000	4.925	2.263
A-22-00	A-22-DWF-7/A-22-C-11-B	SSFR_22	PP	0.516	0.516	0.000	3.437	1.227
A-22-00	A-22-DWF-7/A-22-C-11-B	SSFR_23	PP	0.941	0.941	0.000	7.765	2.636
A-22-00	A-22-DWF-7/A-22-C-11-B	SSFR_24	PP	0.175	0.175	0.000	0.578	0.208
A-22-00	A-22-DWF-6/A-22-C-13	SSFR_25	PP	0.141	0.141	0.000	2.695	1.260
A-22-00	A-22-DWF-6/A-22-C-15-B	SSFR_26	PP	0.227	0.227	0.000	1.306	1.045

ALCOSAN POC	Model Subcatchment	Concept Municipal Project UID	BMP Type	Concept Municipal Project Area (acres)	Public ROW or Parcel		Concept Municipal Project Individual Drainage Area (acres)*	Concept Municipal Project Impervious Drainage Area (acres)*
					Area of Municipal Project in Public ROW (acres)	Area of Municipal Project outside of Public ROW (acres)		
A-22-00	A-22-DWF-6/A-22-C-14	SSFR_27	PP	0.146	0.146	0.000	5.002	3.091
A-22-00	A-22-DWF-6/A-22-C-14	SSFR_28	PP	0.092	0.089	0.003	0.582	0.410
A-22-00	A-22-DWF-6/A-22-C-14	SSFR_29	PP	0.255	0.255	0.000	3.308	1.674
A-22-00	A-22-DWF-6/A-22-C-14	SSFR_30	PP	0.070	0.070	0.000	2.596	1.085
A-22-00	A-22-DWF-6/A-22-C-14	SSFR_31	PP	0.133	0.133	0.000	3.359	1.448
A-22-00	A-22-DWF-6/A-22-C-14	SSFR_32	PP	0.205	0.205	0.000	1.799	1.064
A-22-00	A-22-DWF-6/A-22-C-14	SSFR_33	PP	0.176	0.176	0.000	1.391	0.579
A-22-00	A-22-DWF-6/A-22-C-14	SSFR_34	PP	0.489	0.489	0.000	11.685	5.862
A-22-00	A-22-DWF-6/A-22-C-15-C	SSFR_35	PP	0.964	0.964	0.000	3.990	2.317
A-22-00	A-22-DWF-6/A-22-C-15-C	SSFR_36	PP	0.127	0.126	0.001	0.983	0.625
A-22-00	A-22-DWF-6/A-22-C-15-A	SSFR_37	PP	1.011	0.895	0.116	4.739	1.983
A-22-00	A-22-DWF-6/A-22-C-16-B	SSFR_38	PP	0.257	0.212	0.045	0.890	0.363
A-22-00	A-22-DWF-6/A-22-C-16-B	SSFR_39	PP	0.071	0.071	0.000	1.062	0.463
A-22-00	A-22-DWF-6/A-22-C-16-A	SSFR_40	PP	0.714	0.714	0.000	13.281	6.557
A-22-00	A-22-DWF-6/A-22-C-17	SSFR_41	PP	0.888	0.888	0.000	4.134	2.189
A-22-00	A-22-DWF-8/A-22-C-18-A	SSFR_42	PP	0.097	0.097	0.000	0.844	0.504
A-22-00	A-22-DWF-6/A-22-C-16-B	SSFR_43	PP	1.245	1.244	0.001	10.140	4.642
A-22-00	A-22-DWF-8/A-22-C-18-A	SSFR_44	PP	0.513	0.507	0.006	6.823	3.071
A-22-00	A-22-DWF-8/A-22-C-18-A	SSFR_45	PP	0.307	0.307	0.000	3.386	1.647
A-22-00	A-22-DWF-8/A-22-C-18-A	SSFR_46	PP	0.189	0.189	0.000	1.989	0.858
A-22-00	A-22-DWF-8/A-22-C-18-A	SSFR_47	PP	0.239	0.235	0.004	1.973	0.625
A-22-00	A-22-DWF-6/A-22-C-17	SSFR_48	PP	0.170	0.170	0.000	1.756	1.518
A-22-00	A-22-DWF-8/A-22-C-18-B	SSFR_49	PP	0.116	0.116	0.000	0.628	0.240
A-22-00	A-22-DWF-8/A-22-C-18-B	SSFR_50	PP	0.262	0.262	0.000	0.498	0.328
A-22-00	A-22-DWF-8/A-22-C-18-A	SSFR_51	PP	0.156	0.156	0.000	4.621	2.641
A-22-00	A-22-DWF-7/A-22-C-12	SSFR_52	PP	0.240	0.240	0.000	3.534	1.452
A-22-00	A-22-DWF-7/A-22-C-12	SSFR_53	PP	0.117	0.117	0.000	0.589	0.272
A-22-00	A-22-DWF-7/A-22-C-12	SSFR_54	PP	0.093	0.093	0.000	0.488	0.263
A-22-00	A-22-DWF-7/A-22-C-12	SSFR_55	PP	0.158	0.155	0.003	1.007	0.362
A-22-00	A-22-DWF-7/A-22-C-12	SSFR_56	PP	0.073	0.067	0.006	0.160	0.073
A-22-00	A-22-DWF-7/A-22-C-12	SSFR_57	PP	2.702	2.702	0.000	18.826	7.197
A-22-00	A-22-DWF-6/A-22-C-14	SSFR_58	PP	0.616	0.616	0.000	2.027	1.077
A-22-00	A-22-DWF-6/A-22-C-15-A	SSFR_59	PP	0.543	0.543	0.000	3.562	1.542

ALCOSAN POC	Model Subcatchment	Concept Municipal Project UID	BMP Type	Concept Municipal Project Area (acres)	Public ROW or Parcel		Concept Municipal Project Individual Drainage Area (acres)*	Concept Municipal Project Individual Project Impervious Drainage Area (acres)*
					Area of Municipal Project in Public ROW (acres)	Area of Municipal Project outside of Public ROW (acres)		
A-22-00	A-22-DWF-6/A-22-C-16-B	SSFR_60	PP	0.354	0.354	0.000	1.027	0.598
A-22-00	A-22-DWF-6/A-22-C-16-B	SSFR_61	PP	0.564	0.564	0.000	2.823	1.739
A-22-00	A-22-DWF-6/A-22-C-16-B	SSFR_62	PP	0.109	0.109	0.000	1.208	0.570
A-22-00	A-22-DWF-8/A-22-C-18-C	SSFR_63	PP	1.315	1.315	0.000	6.081	3.196
A-22-00	A-22-DWF-8/A-22-C-19-B	SSFR_64	PP	0.035	0.035	0.000	0.318	0.099
A-22-00	A-22-DWF-8/A-22-C-19-B	SSFR_65	PP	0.207	0.207	0.000	1.593	0.498
A-22-00	A-22-DWF-8/A-22-C-19-B	SSFR_66	PP	0.061	0.061	0.000	6.022	2.571
A-22-00	A-22-DWF-8/A-22-C-19-B	SSFR_67	PP	0.074	0.074	0.000	2.451	1.004
A-22-00	A-22-DWF-8/A-22-C-19-B	SSFR_68	PP	0.173	0.173	0.000	6.652	2.721
A-22-00	A-22-DWF-8/A-22-C-19-A	SSFR_69	PP	0.067	0.067	0.000	0.258	0.164
A-22-00	A-22-DWF-8/A-22-C-19-A	SSFR_70	PP	0.381	0.381	0.000	2.687	1.627
A-22-00	A-22-DWF-8/A-22-C-19-A	SSFR_71	PP	0.071	0.070	0.001	0.440	0.276
A-22-00	A-22-DWF-8/A-22-C-19-A	SSFR_72	PP	0.129	0.129	0.000	2.694	0.972
A-22-00	A-22-DWF-8/A-22-C-19-A	SSFR_73	PP	0.129	0.129	0.000	1.140	0.826
A-22-00	A-22-DWF-8/A-22-C-19-A	SSFR_74	PP	0.060	0.060	0.000	1.060	0.556
A-22-00	A-22-DWF-7/A-22-C-21-A	SSFR_75	PP	0.299	0.299	0.000	4.155	2.014
A-22-00	A-22-DWF-7/A-22-C-21-A	SSFR_76	PP	0.036	0.036	0.000	0.478	0.245
A-22-00	A-22-DWF-7/A-22-C-21-A	SSFR_77	PP	0.069	0.069	0.000	0.386	0.168
A-22-00	A-22-DWF-12/A-22-C-23-A	SSFR_78	PP	0.102	0.087	0.015	0.223	0.111
A-22-00	A-22-DWF-12/A-22-C-23-A	SSFR_79	PP	0.103	0.077	0.026	0.368	0.211
A-22-00	A-22-DWF-12/A-22-C-23-A	SSFR_80	PP	0.547	0.547	0.000	3.175	1.670
A-22-00	A-22-DWF-12/A-22-C-23-A	SSFR_81	PP	0.082	0.082	0.000	0.192	0.110
A-22-00	A-22-DWF-12/A-22-C-23-A	SSFR_82	PP	0.022	0.016	0.006	0.095	0.037
A-22-00	A-22-DWF-12/A-22-C-23-A	SSFR_83	PP	0.038	0.029	0.009	0.226	0.109
A-22-00	A-22-DWF-7/A-22-C-22-A	SSFR_84	PP	0.055	0.055	0.000	1.879	1.195
A-22-00	A-22-DWF-7/A-22-C-22-B	SSFR_85	PP	0.821	0.821	0.000	7.100	4.419
A-22-00	A-22-DWF-7/A-22-C-22-B	SSFR_86	PP	0.095	0.095	0.000	1.271	0.761
A-22-00	A-22-DWF-7/A-22-C-22-B	SSFR_87	PP	0.060	0.055	0.005	0.771	0.391
A-22-00	A-22-DWF-12/A-22-C-23-A	SSFR_88	PP	0.147	0.147	0.000	2.447	1.276
A-22-00	A-22-DWF-7/A-22-C-22-B	SSFR_89	PP	0.156	0.152	0.004	1.112	0.559
A-22-00	A-22-DWF-7/A-22-C-22-B	SSFR_90	PP	0.053	0.049	0.004	0.258	0.111
A-22-00	A-22-DWF-7/A-22-C-22-B	SSFR_91	PP	1.231	1.231	0.000	9.236	4.722
A-22-00	A-22-DWF-12/A-22-C-23-A	SSFR_92	PP	0.860	0.860	0.000	5.839	2.552

ALCOSAN POC	Model Subcatchment	Concept Municipal Project UID	BMP Type	Concept Municipal Project Area (acres)	Public ROW or Parcel		Concept Municipal Project Individual Drainage Area (acres)*	Concept Municipal Project Individual Project Impervious Drainage Area (acres)*
					Area of Municipal Project in Public ROW (acres)	Area of Municipal Project outside of Public ROW (acres)		
A-22-00	A-22-DWF-7/A-22-C-22-A	SSFR_93	PP	0.201	0.201	0.000	1.318	0.641
A-22-00	A-22-DWF-12/A-22-C-23-A	SSFR_94	PP	0.072	0.072	0.000	0.214	0.116
A-22-00	A-22-DWF-12/A-22-C-23-A	SSFR_95	PP	1.268	1.268	0.000	5.863	2.923
A-22-00	A-22-DWF-12/A-22-C-23-A	SSFR_96	PP	0.087	0.087	0.000	0.189	0.121
A-22-00	A-22-DWF-7/A-22-C-22-B	SSFR_97	PP	0.026	0.026	0.000	0.049	0.048
A-22-00	A-22-DWF-12/A-22-C-23-A	SSFR_98	PP	0.113	0.113	0.000	0.590	0.290
A-22-00	A-22-DWF-12/A-22-C-23-B	SSFR_99	PP	0.099	0.099	0.000	0.455	0.153
A-22-00	A-22-DWF-12/A-22-C-23-A	SSFR_100	PP	0.140	0.140	0.000	2.350	1.263
A-22-00	A-22-DWF-9/A-22-C-28-B	SSFR_101	PP	1.190	1.190	0.000	5.521	2.813
A-22-00	A-22-DWF-12/A-22-C-23-A	SSFR_102	PP	0.484	0.484	0.000	6.560	2.614
A-22-00	A-22-DWF-12/A-22-C-23-A	SSFR_103	PP	1.011	1.011	0.000	6.647	3.367
A-22-00	A-22-DWF-9/A-22-C-28-B	SSFR_104	PP	0.094	0.094	0.000	0.240	0.115
A-22-00	A-22-DWF-10/A-22-C-29-B	SSFR_105	PP	0.090	0.090	0.000	0.638	0.303
A-22-00	A-22-DWF-11/A-22-C-27	SSFR_106	PP	1.999	1.999	0.000	14.654	7.469
A-22-00	A-22-DWF-12/A-22-C-23-A	SSFR_107	PP	0.044	0.044	0.000	0.125	0.066
A-22-00	A-22-DWF-9/A-22-C-28-B	SSFR_108	PP	0.083	0.083	0.000	1.241	0.587
A-22-00	A-22-DWF-12/A-22-C-23-A	SSFR_109	PP	0.103	0.103	0.000	0.350	0.233
A-22-00	A-22-DWF-12/A-22-C-23-A	SSFR_110	PP	3.779	3.779	0.000	24.644	12.743
A-22-00	A-22-DWF-12/A-22-C-23-A	SSFR_111	PP	0.039	0.039	0.000	0.298	0.106
A-22-00	A-22-DWF-12/A-22-C-23-A	SSFR_112	PP	0.623	0.620	0.003	8.219	4.483
A-22-00	A-22-DWF-11/A-22-C-27	SSFR_113	PP	0.054	0.054	0.000	0.396	0.259
A-22-00	A-22-DWF-9/A-22-C-28-A	SSFR_114	PP	0.064	0.064	0.000	0.582	0.314
A-22-00	A-22-DWF-9/A-22-C-28-B	SSFR_115	PP	0.075	0.075	0.000	0.778	0.356
A-22-00	A-22-DWF-9/A-22-C-28-B	SSFR_116	PP	0.078	0.078	0.000	0.349	0.218
A-22-00	A-22-DWF-9/A-22-C-28-B	SSFR_117	PP	0.674	0.674	0.000	3.632	1.656
A-22-00	A-22-DWF-9/A-22-C-28-B	SSFR_118	PP	0.156	0.156	0.000	0.699	0.248
A-22-00	A-22-DWF-11/A-22-C-27	SSFR_119	PP	0.283	0.283	0.000	2.575	1.134
A-22-00	A-22-DWF-11/A-22-C-27	SSFR_120	PP	0.082	0.082	0.000	0.829	0.455
A-22-00	A-22-DWF-11/A-22-C-27	SSFR_121	PP	0.086	0.086	0.000	0.653	0.420
A-22-00	A-22-DWF-11/A-22-C-27	SSFR_122	PP	0.218	0.218	0.000	1.328	0.673
A-22-00	A-22-DWF-11/A-22-C-27	SSFR_123	PP	0.111	0.111	0.000	0.848	0.571
A-22-00	A-22-DWF-11/A-22-C-27	SSFR_124	PP	0.253	0.252	0.001	2.057	0.920
A-22-00	A-22-DWF-11/A-22-C-27	SSFR_125	PP	0.096	0.096	0.000	0.938	0.554

ALCOSAN POC	Model Subcatchment	Concept Municipal Project UID	BMP Type	Concept Municipal Project Area (acres)	Public ROW or Parcel		Concept Municipal Project Individual Drainage Area (acres)*	Concept Municipal Project Individual Project Impervious Drainage Area (acres)*
					Area of Municipal Project in Public ROW (acres)	Area of Municipal Project outside of Public ROW (acres)		
A-22-00	A-22-DWF-10/A-22-C-29-A	SSFR_126	PP	0.235	0.235	0.000	1.705	1.107
A-22-00	A-22-DWF-10/A-22-C-29-A	SSFR_127	PP	0.177	0.161	0.016	1.658	0.866
A-22-00	A-22-DWF-10/A-22-C-29-A	SSFR_128	PP	0.251	0.251	0.000	2.716	1.206
A-22-00	A-22-DWF-9/A-22-C-28-B	SSFR_129	PP	0.113	0.113	0.000	0.426	0.211
A-22-00	A-22-DWF-8/A-22-C-24-D	SSFR_130	PP	0.312	0.312	0.000	2.909	2.673
A-22-00	A-22-DWF-9/A-22-C-28-A	SSFR_131	PP	1.796	1.796	0.000	6.439	5.111
A-22-00	A-22-DWF-9/A-22-C-28-A	SSFR_132	PP	0.057	0.055	0.002	0.361	0.259
A-22-00	A-22-DWF-9/A-22-C-28-A	SSFR_133	PP	0.098	0.098	0.000	0.617	0.500
A-22-00	A-22-DWF-9/A-22-C-28-A	SSFR_134	PP	0.331	0.318	0.013	1.754	1.261
A-22-00	A-22-DWF-9/A-22-C-28-B	SSFR_135	PP	0.625	0.625	0.000	3.829	1.621
A-22-00	A-22-DWF-9/A-22-C-28-B	SSFR_136	PP	0.125	0.125	0.000	3.160	1.536
A-22-00	A-22-DWF-9/A-22-C-28-B	SSFR_137	PP	0.090	0.090	0.000	0.385	0.227
A-22-00	A-22-DWF-9/A-22-C-28-B	SSFR_138	PP	0.172	0.172	0.000	0.494	0.158
A-22-00	A-22-DWF-9/A-22-C-28-B	SSFR_139	PP	1.101	1.101	0.000	10.971	5.111
A-22-00	A-22-DWF-9/A-22-C-28-C	SSFR_140	PP	0.232	0.220	0.012	1.624	0.515
A-22-00	A-22-DWF-9/A-22-C-28-B	SSFR_141	PP	0.324	0.324	0.000	2.445	1.482
A-22-00	A-22-DWF-11/A-22-C-27	SSFR_142	PP	1.137	1.137	0.000	12.399	8.147
A-22-00	A-22-DWF-11/A-22-C-27	SSFR_143	PP	0.208	0.208	0.000	1.717	1.039
A-22-00	A-22-DWF-11/A-22-C-27	SSFR_144	PP	0.732	0.590	0.142	3.791	2.747
A-22-00	A-22-DWF-11/A-22-C-27	SSFR_145	PP	0.121	0.121	0.000	1.182	1.182
A-22-00	A-22-DWF-5/A-22-C-6-A	SSFR_146	PP	0.407	0.407	0.000	3.948	1.914
A-22-00	A-22-DWF-7/A-22-C-11-B	SSFR_147	PP	0.079	0.000	0.079	0.241	0.125
A-22-00	A-22-DWF-8/A-22-C-18-D	SSFR_148	PP	0.329	0.329	0.000	4.775	2.168
A-22-00	A-22-DWF-8/A-22-C-18-D	SSFR_149	PP	0.056	0.056	0.000	6.144	2.544
A-22-00	A-22-DWF-8/A-22-C-18-D	SSFR_150	PP	0.265	0.265	0.000	4.566	1.735
A-22-00	A-22-DWF-8/A-22-C-18-D	SSFR_151	PP	0.038	0.038	0.000	0.058	0.050
A-22-00	A-22-DWF-8/A-22-C-24-B	SSFR_152	PP	0.040	0.040	0.000	1.459	0.518
A-22-00	A-22-DWF-8/A-22-C-24-B	SSFR_153	PP	0.031	0.031	0.000	0.889	0.392
A-22-00	A-22-DWF-8/A-22-C-24-B	SSFR_154	PP	0.019	0.019	0.000	0.025	0.025
A-22-00	A-22-DWF-8/A-22-C-24-B	SSFR_155	PP	0.136	0.136	0.000	0.974	0.262
A-22-00	A-22-DWF-8/A-22-C-24-C	SSFR_156	PP	0.037	0.037	0.000	1.130	0.575
A-22-00	A-22-DWF-8/A-22-C-24-C	SSFR_157	PP	0.875	0.875	0.000	12.468	4.918
A-22-00	A-22-DWF-8/A-22-C-24-C	SSFR_158	PP	0.152	0.152	0.000	1.516	0.699

ALCOSAN POC	Model Subcatchment	Concept Municipal Project UID	BMP Type	Concept Municipal Project Area (acres)	Public ROW or Parcel		Concept Municipal Project Individual Drainage Area (acres)*	Concept Municipal Project Individual Project Impervious Drainage Area (acres)*
					Area of Municipal Project in Public ROW (acres)	Area of Municipal Project outside of Public ROW (acres)		
A-22-00	A-22-DWF-8/A-22-C-24-C	SSFR_159	PP	1.207	1.203	0.004	9.581	3.975
A-22-00	A-22-DWF-8/A-22-C-24-C	SSFR_160	PP	0.163	0.161	0.002	1.247	0.516
A-22-00	A-22-DWF-8/A-22-C-24-C	SSFR_161	PP	0.242	0.242	0.000	2.051	1.126
A-22-00	A-22-DWF-8/A-22-C-24-C	SSFR_162	PP	0.106	0.106	0.000	0.848	0.199
A-22-00	A-22-DWF-8/A-22-C-24-C	SSFR_163	PP	0.659	0.659	0.000	4.679	2.155
A-22-00	A-22-DWF-8/A-22-C-19-B	SSFR_164	PP	0.207	0.207	0.000	1.593	0.498
A-22-00	A-22-DWF-8/A-22-C-24-C	SSFR_165	PP	0.125	0.125	0.000	1.186	0.521
A-22-00	A-22-DWF-8/A-22-C-24-C	SSFR_166	PP	0.203	0.203	0.000	0.682	0.329
A-22-00	A-22-DWF-8/A-22-C-24-C	SSFR_167	PP	0.449	0.449	0.000	5.162	2.356
A-22-00	A-22-DWF-8/A-22-C-24-C	SSFR_168	PP	0.119	0.119	0.000	1.556	0.687
A-22-00	A-22-DWF-8/A-22-C-24-C	SSFR_169	PP	0.370	0.328	0.042	2.232	1.041
A-22-00	A-22-DWF-8/A-22-C-24-C	SSFR_170	PP	0.791	0.791	0.000	6.092	3.171
A-22-00	A-22-DWF-8/A-22-C-24-C	SSFR_171	PP	0.104	0.099	0.005	0.878	0.313
A-22-00	A-22-DWF-8/A-22-C-24-A	SSFR_172	PP	0.078	0.078	0.000	0.609	0.219
A-22-00	A-22-DWF-8/A-22-C-24-A	SSFR_173	PP	0.757	0.757	0.000	5.002	2.533
A-22-00	A-22-DWF-8/A-22-C-24-A	SSFR_174	PP	0.143	0.143	0.000	3.226	1.492
A-22-00	A-22-DWF-10/A-22-C-29-C	SSFR_175	PP	3.252	3.214	0.038	14.417	10.397
A-22-00	A-22-DWF-10/A-22-C-29-C	SSFR_176	PP	0.212	0.179	0.033	2.078	1.547
A-22-00	A-22-DWF-8/A-22-C-24-A	SSFR_177	PP	0.489	0.489	0.000	1.964	1.509
A-22-00	A-22-DWF-8/A-22-C-24-A	SSFR_178	PP	0.475	0.475	0.000	3.884	1.742
A-22-00	A-22-DWF-8/A-22-C-24-A	SSFR_179	PP	3.425	3.417	0.008	25.663	18.809
A-22-00	A-22-DWF-8/A-22-C-24-A	SSFR_180	PP	0.110	0.110	0.000	1.780	1.056
A-22-00	A-22-DWF-8/A-22-C-24-A	SSFR_181	PP	0.194	0.194	0.000	0.878	0.428
A-22-00	A-22-DWF-8/A-22-C-24-A	SSFR_182	PP	0.115	0.115	0.000	0.437	0.151
A-22-00	A-22-DWF-8/A-22-C-24-A	SSFR_183	PP	0.124	0.124	0.000	1.820	1.037
A-22-00	A-22-DWF-8/A-22-C-24-A	SSFR_184	PP	0.285	0.285	0.000	1.425	0.893
A-22-00	A-22-DWF-8/A-22-C-24-A	SSFR_185	PP	1.145	1.145	0.000	7.304	3.454
A-22-00	A-22-DWF-8/A-22-C-24-A	SSFR_186	PP	0.512	0.512	0.000	5.647	2.612
A-22-00	A-22-DWF-8/A-22-C-24-A	SSFR_187	PP	0.548	0.548	0.000	1.988	1.056
A-22-00	A-22-DWF-8/A-22-C-24-A	SSFR_188	PP	0.072	0.072	0.000	0.177	0.131
A-22-00	A-22-DWF-8/A-22-C-24-A	SSFR_189	PP	0.117	0.117	0.000	1.040	0.521
A-22-00	A-22-DWF-8/A-22-C-24-A	SSFR_190	PP	0.132	0.132	0.000	0.899	0.425
A-22-00	A-22-DWF-8/A-22-C-24-A	SSFR_191	PP	1.054	1.054	0.000	6.837	2.807

ALCOSAN POC	Model Subcatchment	Concept Municipal Project UID	BMP Type	Concept Municipal Project Area (acres)	Public ROW or Parcel		Concept Municipal Project Individual Drainage Area (acres)*	Concept Municipal Project Individual Project Impervious Drainage Area (acres)*
					Area of Municipal Project in Public ROW (acres)	Area of Municipal Project outside of Public ROW (acres)		
A-22-00	A-22-DWF-8/A-22-C-24-A	SSFR_192	PP	0.137	0.137	0.000	0.641	0.273
A-22-00	A-22-DWF-8/A-22-C-24-B	SSFR_193	PP	0.050	0.050	0.000	0.210	0.134
A-22-00	A-22-DWF-8/A-22-C-24-C	SSFR_194	PP	0.062	0.062	0.000	2.218	0.938
A-22-00	A-22-DWF-8/A-22-C-24-A	SSFR_195	PP	0.136	0.123	0.013	0.905	0.417
A-22-00	A-22-DWF-4/A-22-C-4	SSFR_1001	BR	0.064	0.001	0.063	0.116	0.046
A-22-00	A-22-DWF-1/A-22-C-1-B	SSFR_1002	BR	0.043	0.004	0.039	0.137	0.009
A-22-00	A-22-DWF-1/A-22-C-1-B	SSFR_1003	BR	0.014	0.014	0.000	0.018	0.002
A-22-00	A-22-DWF-5/A-22-C-7-B	SSFR_1004	BR	0.029	0.029	0.000	0.980	0.148
A-22-00	A-22-DWF-5/A-22-C-7-B	SSFR_1005	BR	0.014	0.011	0.003	0.316	0.033
A-22-00	A-22-DWF-5/A-22-C-7-B	SSFR_1006	BR	0.014	0.014	0.000	0.034	0.002
A-22-00	A-22-DWF-5/A-22-C-7-B	SSFR_1007	BR	0.019	0.016	0.003	0.266	0.041
A-22-00	A-22-DWF-5/A-22-C-7-A	SSFR_1008	BR	0.028	0.023	0.005	0.194	0.134
A-22-00	A-22-DWF-5/A-22-C-7-B	SSFR_1009	BR	0.044	0.028	0.016	0.367	0.136
A-22-00	A-22-DWF-5/A-22-C-7-B	SSFR_1010	BR	0.046	0.035	0.011	0.172	0.056
A-22-00	A-22-DWF-5/A-22-C-10	SSFR_1011	BR	0.011	0.011	0.000	0.080	0.021
A-22-00	A-22-DWF-5/A-22-C-7-B	SSFR_1012	BR	0.079	0.056	0.023	1.414	0.768
A-22-00	A-22-DWF-5/A-22-C-7-A	SSFR_1013	BR	0.044	0.024	0.020	0.089	0.046
A-22-00	A-22-DWF-5/A-22-C-7-A	SSFR_1014	BR	0.020	0.020	0.000	0.239	0.127
A-22-00	A-22-DWF-5/A-22-C-7-A	SSFR_1015	BR	0.055	0.006	0.049	1.869	0.905
A-22-00	A-22-DWF-5/A-22-C-7-A	SSFR_1016	BR	0.011	0.011	0.000	0.123	0.032
A-22-00	A-22-DWF-5/A-22-C-7-A	SSFR_1017	BR	0.015	0.015	0.000	0.145	0.070
A-22-00	A-22-DWF-5/A-22-C-7-A	SSFR_1018	BR	0.024	0.024	0.000	2.864	1.059
A-22-00	A-22-DWF-5/A-22-C-7-A	SSFR_1019	BR	0.050	0.050	0.000	0.234	0.079
A-22-00	A-22-DWF-5/A-22-C-7-A	SSFR_1020	BR	0.009	0.006	0.003	0.259	0.149
A-22-00	A-22-DWF-7/A-22-C-9	SSFR_1021	BR	0.010	0.004	0.006	0.125	0.040
A-22-00	A-22-DWF-5/A-22-C-6-A	SSFR_1022	BR	0.020	0.013	0.007	0.052	0.015
A-22-00	A-22-DWF-7/A-22-C-11-B	SSFR_1023	BR	0.039	0.000	0.039	0.170	0.079
A-22-00	A-22-DWF-7/A-22-C-11-B	SSFR_1024	BR	0.007	0.007	0.000	0.015	0.005
A-22-00	A-22-DWF-7/A-22-C-11-B	SSFR_1025	BR	0.021	0.013	0.008	0.108	0.021
A-22-00	A-22-DWF-7/A-22-C-11-B	SSFR_1026	BR	0.016	0.016	0.000	0.121	0.045
A-22-00	A-22-DWF-7/A-22-C-11-B	SSFR_1027	BR	0.040	0.017	0.023	1.333	0.279
A-22-00	A-22-DWF-7/A-22-C-11-B	SSFR_1028	BR	0.019	0.016	0.003	0.046	0.001
A-22-00	A-22-DWF-7/A-22-C-11-B	SSFR_1029	BR	0.038	0.038	0.000	0.083	0.010

ALCOSAN POC	Model Subcatchment	Concept Municipal Project UID	BMP Type	Concept Municipal Project Area (acres)	Public ROW or Parcel		Concept Municipal Project Individual Drainage Area (acres)*	Concept Municipal Project Individual Project Impervious Drainage Area (acres)*
					Area of Municipal Project in Public ROW (acres)	Area of Municipal Project outside of Public ROW (acres)		
A-22-00	A-22-DWF-7/A-22-C-12	SSFR_1030	BR	0.120	0.074	0.046	0.263	0.078
A-22-00	A-22-DWF-7/A-22-C-11-B	SSFR_1031	BR	0.063	0.034	0.029	0.197	0.058
A-22-00	A-22-DWF-7/A-22-C-11-B	SSFR_1032	BR	0.054	0.034	0.020	0.120	0.045
A-22-00	A-22-DWF-6/A-22-C-14	SSFR_1033	BR	0.017	0.000	0.017	0.149	0.002
A-22-00	A-22-DWF-6/A-22-C-16-B	SSFR_1034	BR	0.020	0.014	0.006	0.111	0.053
A-22-00	A-22-DWF-6/A-22-C-15-A	SSFR_1035	BR	0.031	0.016	0.015	0.096	0.095
A-22-00	A-22-DWF-6/A-22-C-16-B	SSFR_1036	BR	0.017	0.011	0.006	0.094	0.030
A-22-00	A-22-DWF-6/A-22-C-16-A	SSFR_1037	BR	0.050	0.043	0.007	0.786	0.326
A-22-00	A-22-DWF-6/A-22-C-16-B	SSFR_1038	BR	0.012	0.012	0.000	0.023	0.008
A-22-00	A-22-DWF-6/A-22-C-16-B	SSFR_1039	BR	0.024	0.019	0.005	1.061	0.445
A-22-00	A-22-DWF-8/A-22-C-18-A	SSFR_1040	BR	0.037	0.036	0.001	0.183	0.064
A-22-00	A-22-DWF-8/A-22-C-18-A	SSFR_1041	BR	0.013	0.013	0.000	2.988	1.364
A-22-00	A-22-DWF-8/A-22-C-18-A	SSFR_1042	BR	0.017	0.016	0.001	0.073	0.025
A-22-00	A-22-DWF-8/A-22-C-18-A	SSFR_1043	BR	0.007	0.004	0.003	0.961	0.257
A-22-00	A-22-DWF-8/A-22-C-18-A	SSFR_1044	BR	0.012	0.006	0.006	1.355	0.447
A-22-00	A-22-DWF-8/A-22-C-18-B	SSFR_1045	BR	0.018	0.014	0.004	0.021	0.006
A-22-00	A-22-DWF-8/A-22-C-18-B	SSFR_1046	BR	0.084	0.054	0.030	0.205	0.058
A-22-00	A-22-DWF-8/A-22-C-19-B	SSFR_1047	BR	0.032	0.022	0.010	0.250	0.080
A-22-00	A-22-DWF-8/A-22-C-18-B	SSFR_1048	BR	0.046	0.035	0.011	0.287	0.133
A-22-00	A-22-DWF-8/A-22-C-18-B	SSFR_1049	BR	0.020	0.018	0.002	0.046	0.024
A-22-00	A-22-DWF-8/A-22-C-18-A	SSFR_1050	BR	0.011	0.010	0.001	0.033	0.012
A-22-00	A-22-DWF-8/A-22-C-18-A	SSFR_1051	BR	0.043	0.034	0.009	0.142	0.066
A-22-00	A-22-DWF-7/A-22-C-12	SSFR_1052	BR	0.012	0.009	0.003	0.079	0.037
A-22-00	A-22-DWF-7/A-22-C-12	SSFR_1053	BR	0.022	0.010	0.012	0.355	0.139
A-22-00	A-22-DWF-7/A-22-C-12	SSFR_1054	BR	0.012	0.007	0.005	0.195	0.057
A-22-00	A-22-DWF-7/A-22-C-12	SSFR_1055	BR	0.047	0.046	0.001	0.777	0.153
A-22-00	A-22-DWF-7/A-22-C-12	SSFR_1056	BR	0.028	0.026	0.002	0.055	0.024
A-22-00	A-22-DWF-7/A-22-C-12	SSFR_1057	BR	0.013	0.009	0.004	0.095	0.037
A-22-00	A-22-DWF-7/A-22-C-11-B	SSFR_1058	BR	0.022	0.019	0.003	0.116	0.053
A-22-00	A-22-DWF-7/A-22-C-12	SSFR_1059	BR	0.015	0.012	0.003	0.379	0.094
A-22-00	A-22-DWF-7/A-22-C-12	SSFR_1060	BR	0.019	0.012	0.007	0.099	0.026
A-22-00	A-22-DWF-7/A-22-C-12	SSFR_1061	BR	0.017	0.017	0.000	0.024	0.009
A-22-00	A-22-DWF-6/A-22-C-15-A	SSFR_1062	BR	0.022	0.022	0.000	0.220	0.058

ALCOSAN POC	Model Subcatchment	Concept Municipal Project UID	BMP Type	Concept Municipal Project Area (acres)	Public ROW or Parcel		Concept Municipal Project Individual Drainage Area (acres)*	Concept Municipal Project Individual Project Impervious Drainage Area (acres)*
					Area of Municipal Project in Public ROW (acres)	Area of Municipal Project outside of Public ROW (acres)		
A-22-00	A-22-DWF-6/A-22-C-16-B	SSFR_1063	BR	0.011	0.009	0.002	0.037	0.014
A-22-00	A-22-DWF-6/A-22-C-16-B	SSFR_1064	BR	0.004	0.004	0.000	0.008	0.002
A-22-00	A-22-DWF-6/A-22-C-16-B	SSFR_1065	BR	0.006	0.004	0.002	0.008	0.001
A-22-00	A-22-DWF-8/A-22-C-18-C	SSFR_1066	BR	0.041	0.041	0.000	0.351	0.187
A-22-00	A-22-DWF-8/A-22-C-18-C	SSFR_1067	BR	0.016	0.011	0.005	0.229	0.136
A-22-00	A-22-DWF-8/A-22-C-18-C	SSFR_1068	BR	0.007	0.005	0.002	0.049	0.022
A-22-00	A-22-DWF-8/A-22-C-18-C	SSFR_1069	BR	0.007	0.006	0.001	0.101	0.059
A-22-00	A-22-DWF-8/A-22-C-19-B	SSFR_1070	BR	0.040	0.030	0.010	0.280	0.109
A-22-00	A-22-DWF-8/A-22-C-19-B	SSFR_1071	BR	0.021	0.015	0.006	0.326	0.128
A-22-00	A-22-DWF-8/A-22-C-18-C	SSFR_1072	BR	0.010	0.010	0.000	0.029	0.014
A-22-00	A-22-DWF-8/A-22-C-19-B	SSFR_1073	BR	0.018	0.018	0.000	0.053	0.025
A-22-00	A-22-DWF-8/A-22-C-19-B	SSFR_1074	BR	0.016	0.016	0.000	0.059	0.034
A-22-00	A-22-DWF-8/A-22-C-19-A	SSFR_1075	BR	0.021	0.013	0.008	0.613	0.153
A-22-00	A-22-DWF-7/A-22-C-22-B	SSFR_1076	BR	0.023	0.015	0.008	0.066	0.003
A-22-00	A-22-DWF-12/A-22-C-23-A	SSFR_1077	BR	0.060	0.049	0.011	3.969	1.379
A-22-00	A-22-DWF-7/A-22-C-21-A	SSFR_1078	BR	0.008	0.006	0.002	0.033	0.016
A-22-00	A-22-DWF-7/A-22-C-21-A	SSFR_1079	BR	0.023	0.017	0.006	0.044	0.012
A-22-00	A-22-DWF-12/A-22-C-23-A	SSFR_1080	BR	0.015	0.010	0.005	0.816	0.444
A-22-00	A-22-DWF-12/A-22-C-23-A	SSFR_1081	BR	0.007	0.005	0.002	0.012	0.002
A-22-00	A-22-DWF-7/A-22-C-22-A	SSFR_1082	BR	0.008	0.004	0.004	0.076	0.033
A-22-00	A-22-DWF-7/A-22-C-22-A	SSFR_1083	BR	0.019	0.005	0.014	0.037	0.015
A-22-00	A-22-DWF-7/A-22-C-22-B	SSFR_1084	BR	0.032	0.032	0.000	0.233	0.068
A-22-00	A-22-DWF-7/A-22-C-22-B	SSFR_1085	BR	0.022	0.022	0.000	0.657	0.281
A-22-00	A-22-DWF-7/A-22-C-22-B	SSFR_1086	BR	0.012	0.009	0.003	0.034	0.005
A-22-00	A-22-DWF-7/A-22-C-22-B	SSFR_1087	BR	0.060	0.060	0.000	0.663	0.325
A-22-00	A-22-DWF-7/A-22-C-22-B	SSFR_1088	BR	0.009	0.008	0.001	0.025	0.005
A-22-00	A-22-DWF-7/A-22-C-22-B	SSFR_1089	BR	0.011	0.009	0.002	0.169	0.076
A-22-00	A-22-DWF-7/A-22-C-22-B	SSFR_1090	BR	0.006	0.006	0.000	0.075	0.039
A-22-00	A-22-DWF-7/A-22-C-22-B	SSFR_1091	BR	0.060	0.041	0.019	0.338	0.163
A-22-00	A-22-DWF-7/A-22-C-22-A	SSFR_1092	BR	0.008	0.007	0.001	0.038	0.009
A-22-00	A-22-DWF-7/A-22-C-22-A	SSFR_1093	BR	0.013	0.011	0.002	0.050	0.004
A-22-00	A-22-DWF-12/A-22-C-23-A	SSFR_1094	BR	0.029	0.019	0.010	0.278	0.151
A-22-00	A-22-DWF-12/A-22-C-23-A	SSFR_1095	BR	0.014	0.009	0.005	0.044	0.030

ALCOSAN POC	Model Subcatchment	Concept Municipal Project UID	BMP Type	Concept Municipal Project Area (acres)	Public ROW or Parcel		Concept Municipal Project Individual Drainage Area (acres)*	Concept Municipal Project Individual Project Impervious Drainage Area (acres)*
					Area of Municipal Project in Public ROW (acres)	Area of Municipal Project outside of Public ROW (acres)		
A-22-00	A-22-DWF-12/A-22-C-23-A	SSFR_1096	BR	0.019	0.004	0.015	0.143	0.045
A-22-00	A-22-DWF-12/A-22-C-23-A	SSFR_1097	BR	0.019	0.019	0.000	0.046	0.005
A-22-00	A-22-DWF-12/A-22-C-23-A	SSFR_1098	BR	0.013	0.008	0.005	0.051	0.009
A-22-00	A-22-DWF-12/A-22-C-23-A	SSFR_1099	BR	0.032	0.014	0.018	0.371	0.176
A-22-00	A-22-DWF-12/A-22-C-23-A	SSFR_1100	BR	0.020	0.014	0.006	0.969	0.523
A-22-00	A-22-DWF-12/A-22-C-23-A	SSFR_1101	BR	0.023	0.017	0.006	0.037	0.013
A-22-00	A-22-DWF-12/A-22-C-23-A	SSFR_1102	BR	0.017	0.013	0.004	0.078	0.042
A-22-00	A-22-DWF-12/A-22-C-23-A	SSFR_1103	BR	0.032	0.027	0.005	0.361	0.183
A-22-00	A-22-DWF-12/A-22-C-23-B	SSFR_1104	BR	0.005	0.005	0.000	0.053	0.015
A-22-00	A-22-DWF-12/A-22-C-23-A	SSFR_1105	BR	0.015	0.010	0.005	0.022	0.006
A-22-00	A-22-DWF-12/A-22-C-23-A	SSFR_1106	BR	0.037	0.028	0.009	0.195	0.116
A-22-00	A-22-DWF-12/A-22-C-23-A	SSFR_1107	BR	0.019	0.017	0.002	0.502	0.277
A-22-00	A-22-DWF-12/A-22-C-23-A	SSFR_1108	BR	0.004	0.003	0.001	0.011	0.003
A-22-00	A-22-DWF-12/A-22-C-23-A	SSFR_1109	BR	0.024	0.018	0.006	0.591	0.242
A-22-00	A-22-DWF-12/A-22-C-23-A	SSFR_1110	BR	0.012	0.012	0.000	0.027	0.003
A-22-00	A-22-DWF-9/A-22-C-28-B	SSFR_1111	BR	0.007	0.007	0.000	0.049	0.011
A-22-00	A-22-DWF-12/A-22-C-23-A	SSFR_1112	BR	0.008	0.007	0.001	0.048	0.009
A-22-00	A-22-DWF-12/A-22-C-23-A	SSFR_1113	BR	0.006	0.006	0.000	0.066	0.018
A-22-00	A-22-DWF-12/A-22-C-23-A	SSFR_1114	BR	0.010	0.006	0.004	0.072	0.048
A-22-00	A-22-DWF-12/A-22-C-23-A	SSFR_1115	BR	0.014	0.007	0.007	0.136	0.057
A-22-00	A-22-DWF-12/A-22-C-23-A	SSFR_1116	BR	0.041	0.041	0.000	2.075	1.057
A-22-00	A-22-DWF-12/A-22-C-23-A	SSFR_1117	BR	0.027	0.026	0.001	0.305	0.203
A-22-00	A-22-DWF-12/A-22-C-23-A	SSFR_1118	BR	0.009	0.006	0.003	0.029	0.003
A-22-00	A-22-DWF-12/A-22-C-23-A	SSFR_1119	BR	0.014	0.013	0.001	0.321	0.173
A-22-00	A-22-DWF-12/A-22-C-23-A	SSFR_1120	BR	0.005	0.002	0.003	0.362	0.181
A-22-00	A-22-DWF-12/A-22-C-23-A	SSFR_1121	BR	0.007	0.007	0.000	0.029	0.016
A-22-00	A-22-DWF-12/A-22-C-23-A	SSFR_1122	BR	0.010	0.006	0.004	0.063	0.006
A-22-00	A-22-DWF-12/A-22-C-23-A	SSFR_1123	BR	0.013	0.013	0.000	0.023	0.004
A-22-00	A-22-DWF-12/A-22-C-23-A	SSFR_1124	BR	0.013	0.003	0.010	2.274	1.547
A-22-00	A-22-DWF-12/A-22-C-23-A	SSFR_1125	BR	0.048	0.032	0.016	0.373	0.163
A-22-00	A-22-DWF-12/A-22-C-23-A	SSFR_1126	BR	0.034	0.019	0.015	0.089	0.039
A-22-00	A-22-DWF-12/A-22-C-23-A	SSFR_1127	BR	0.009	0.007	0.002	0.198	0.083
A-22-00	A-22-DWF-9/A-22-C-28-B	SSFR_1128	BR	0.010	0.006	0.004	0.022	0.003

ALCOSAN POC	Model Subcatchment	Concept Municipal Project UID	BMP Type	Concept Municipal Project Area (acres)	Public ROW or Parcel		Concept Municipal Project Individual Drainage Area (acres)*	Concept Municipal Project Individual Project Impervious Drainage Area (acres)*
					Area of Municipal Project in Public ROW (acres)	Area of Municipal Project outside of Public ROW (acres)		
A-22-00	A-22-DWF-9/A-22-C-28-B	SSFR_1129	BR	0.042	0.039	0.003	0.186	0.085
A-22-00	A-22-DWF-9/A-22-C-28-B	SSFR_1130	BR	0.015	0.010	0.005	0.027	0.010
A-22-00	A-22-DWF-11/A-22-C-27	SSFR_1131	BR	0.009	0.009	0.000	0.014	0.005
A-22-00	A-22-DWF-11/A-22-C-27	SSFR_1132	BR	0.029	0.019	0.010	0.076	0.023
A-22-00	A-22-DWF-11/A-22-C-27	SSFR_1133	BR	0.008	0.004	0.004	0.019	0.009
A-22-00	A-22-DWF-11/A-22-C-27	SSFR_1134	BR	0.008	0.004	0.004	0.468	0.245
A-22-00	A-22-DWF-11/A-22-C-27	SSFR_1135	BR	0.009	0.009	0.000	0.785	0.328
A-22-00	A-22-DWF-11/A-22-C-27	SSFR_1136	BR	0.019	0.017	0.002	0.088	0.031
A-22-00	A-22-DWF-11/A-22-C-27	SSFR_1137	BR	0.008	0.004	0.004	0.011	0.001
A-22-00	A-22-DWF-11/A-22-C-27	SSFR_1138	BR	0.005	0.003	0.002	1.455	0.756
A-22-00	A-22-DWF-8/A-22-C-24-D	SSFR_1139	BR	0.055	0.055	0.000	0.075	0.022
A-22-00	A-22-DWF-8/A-22-C-24-D	SSFR_1140	BR	0.031	0.006	0.025	0.756	0.439
A-22-00	A-22-DWF-9/A-22-C-28-A	SSFR_1141	BR	0.015	0.007	0.008	0.021	0.021
A-22-00	A-22-DWF-9/A-22-C-28-A	SSFR_1142	BR	0.030	0.026	0.004	0.045	0.045
A-22-00	A-22-DWF-9/A-22-C-28-B	SSFR_1143	BR	0.020	0.017	0.003	0.035	0.007
A-22-00	A-22-DWF-9/A-22-C-28-B	SSFR_1144	BR	0.008	0.007	0.001	0.101	0.031
A-22-00	A-22-DWF-9/A-22-C-28-B	SSFR_1145	BR	0.096	0.059	0.037	0.332	0.082
A-22-00	A-22-DWF-9/A-22-C-28-B	SSFR_1146	BR	0.028	0.028	0.000	0.038	0.021
A-22-00	A-22-DWF-9/A-22-C-28-C	SSFR_1147	BR	0.050	0.032	0.018	0.300	0.111
A-22-00	A-22-DWF-9/A-22-C-28-B	SSFR_1148	BR	0.032	0.028	0.004	0.122	0.084
A-22-00	A-22-DWF-9/A-22-C-28-B	SSFR_1149	BR	0.028	0.017	0.011	0.106	0.055
A-22-00	A-22-DWF-9/A-22-C-28-B	SSFR_1150	BR	0.014	0.014	0.000	0.075	0.045
A-22-00	A-22-DWF-9/A-22-C-28-B	SSFR_1151	BR	0.024	0.023	0.001	0.100	0.051
A-22-00	A-22-DWF-9/A-22-C-28-B	SSFR_1152	BR	0.009	0.004	0.005	0.020	0.001
A-22-00	A-22-DWF-9/A-22-C-28-B	SSFR_1153	BR	0.017	0.016	0.001	0.055	0.024
A-22-00	A-22-DWF-9/A-22-C-28-B	SSFR_1154	BR	0.034	0.034	0.000	0.666	0.260
A-22-00	A-22-DWF-9/A-22-C-28-C	SSFR_1155	BR	0.021	0.017	0.004	2.389	1.165
A-22-00	A-22-DWF-9/A-22-C-28-C	SSFR_1156	BR	0.026	0.019	0.007	0.879	0.402
A-22-00	A-22-DWF-9/A-22-C-28-C	SSFR_1157	BR	0.025	0.018	0.007	0.045	0.012
A-22-00	A-22-DWF-9/A-22-C-28-C	SSFR_1158	BR	0.020	0.014	0.006	0.135	0.063
A-22-00	A-22-DWF-9/A-22-C-28-C	SSFR_1159	BR	0.022	0.013	0.009	0.047	0.032
A-22-00	A-22-DWF-9/A-22-C-28-B	SSFR_1160	BR	0.017	0.013	0.004	0.051	0.019
A-22-00	A-22-DWF-11/A-22-C-27	SSFR_1161	BR	0.019	0.005	0.014	0.040	0.004

ALCOSAN POC	Model Subcatchment	Concept Municipal Project UID	BMP Type	Concept Municipal Project Area (acres)	Public ROW or Parcel		Concept Municipal Project Individual Drainage Area (acres)*	Concept Municipal Project Individual Project Impervious Drainage Area (acres)*
					Area of Municipal Project in Public ROW (acres)	Area of Municipal Project outside of Public ROW (acres)		
A-22-00	A-22-DWF-11/A-22-C-27	SSFR_1162	BR	0.032	0.009	0.023	0.054	0.002
A-22-00	A-22-DWF-11/A-22-C-27	SSFR_1163	BR	0.016	0.016	0.000	0.030	0.011
A-22-00	A-22-DWF-11/A-22-C-27	SSFR_1164	BR	0.066	0.039	0.027	1.336	0.525
A-22-00	A-22-DWF-11/A-22-C-27	SSFR_1165	BR	0.086	0.056	0.030	2.242	1.249
A-22-00	A-22-DWF-11/A-22-C-27	SSFR_1166	BR	0.025	0.021	0.004	0.065	0.042
A-22-00	A-22-DWF-11/A-22-C-27	SSFR_1167	BR	0.007	0.000	0.007	0.056	0.029
A-22-00	A-22-DWF-11/A-22-C-27	SSFR_1168	BR	0.009	0.000	0.009	0.017	0.002
A-22-00	A-22-DWF-11/A-22-C-27	SSFR_1169	BR	0.031	0.023	0.008	0.112	0.112
A-22-00	A-22-DWF-11/A-22-C-27	SSFR_1170	BR	0.021	0.020	0.001	0.582	0.536
A-22-00	A-22-DWF-8/A-22-C-24-C	SSFR_1171	BR	0.016	0.016	0.000	0.036	0.003
A-22-00	A-22-DWF-6/A-22-C-16-B	SSFR_1172	BR	0.028	0.004	0.024	0.268	0.140
A-22-00	A-22-DWF-7/A-22-C-12	SSFR_1173	BR	0.009	0.005	0.004	0.022	0.001
A-22-00	A-22-DWF-7/A-22-C-12	SSFR_1174	BR	0.015	0.012	0.003	0.137	0.063
A-22-00	A-22-DWF-1/A-22-C-1-A	SSFR_1175	BR	0.030	0.014	0.016	0.461	0.273
A-22-00	A-22-DWF-1/A-22-C-1-A	SSFR_1176	BR	0.170	0.097	0.073	3.816	2.954
A-22-00	A-22-DWF-5/A-22-C-7-B	SSFR_1177	BR	0.016	0.015	0.001	0.340	0.037
A-22-00	A-22-DWF-5/A-22-C-7-B	SSFR_1178	BR	0.016	0.016	0.000	0.028	0.006
A-22-00	A-22-DWF-7/A-22-C-11-B	SSFR_1179	BR	0.009	0.003	0.006	0.027	0.011
A-22-00	A-22-DWF-7/A-22-C-12	SSFR_1180	BR	0.051	0.033	0.018	1.223	0.249
A-22-00	A-22-DWF-12/A-22-C-23-A	SSFR_1181	BR	0.017	0.011	0.006	0.035	0.005
A-22-00	A-22-DWF-9/A-22-C-28-B	SSFR_1182	BR	0.017	0.016	0.001	0.046	0.011
A-22-00	A-22-DWF-9/A-22-C-28-B	SSFR_1183	BR	0.028	0.028	0.000	0.064	0.011
A-22-00	A-22-DWF-6/A-22-C-16-A	SSFR_1184	BR	0.066	0.053	0.013	0.227	0.174
A-22-00	A-22-DWF-6/A-22-C-15-A	SSFR_1185	BR	0.036	0.032	0.004	0.207	0.085
A-22-00	A-22-DWF-6/A-22-C-15-A	SSFR_1186	BR	0.027	0.026	0.001	0.113	0.028
A-22-00	A-22-DWF-6/A-22-C-15-A	SSFR_1187	BR	0.047	0.047	0.000	0.376	0.150
A-22-00	A-22-DWF-8/A-22-C-24-B	SSFR_1188	BR	0.091	0.047	0.044	0.126	0.053
A-22-00	A-22-DWF-8/A-22-C-18-D	SSFR_1189	BR	0.017	0.016	0.001	0.137	0.074
A-22-00	A-22-DWF-8/A-22-C-18-D	SSFR_1190	BR	0.009	0.008	0.001	0.282	0.057
A-22-00	A-22-DWF-8/A-22-C-18-D	SSFR_1191	BR	0.012	0.004	0.008	0.045	0.021
A-22-00	A-22-DWF-8/A-22-C-18-D	SSFR_1192	BR	0.014	0.013	0.001	0.016	0.011
A-22-00	A-22-DWF-8/A-22-C-24-C	SSFR_1193	BR	0.015	0.012	0.003	0.082	0.034
A-22-00	A-22-DWF-8/A-22-C-24-C	SSFR_1194	BR	0.007	0.007	0.000	0.245	0.100

ALCOSAN POC	Model Subcatchment	Concept Municipal Project UID	BMP Type	Concept Municipal Project Area (acres)	Public ROW or Parcel		Concept Municipal Project Individual Drainage Area (acres)*	Concept Municipal Project Individual Project Impervious Drainage Area (acres)*
					Area of Municipal Project in Public ROW (acres)	Area of Municipal Project outside of Public ROW (acres)		
A-22-00	A-22-DWF-8/A-22-C-24-C	SSFR_1195	BR	0.007	0.007	0.000	0.071	0.014
A-22-00	A-22-DWF-8/A-22-C-24-C	SSFR_1196	BR	0.017	0.017	0.000	0.084	0.035
A-22-00	A-22-DWF-8/A-22-C-24-C	SSFR_1197	BR	0.016	0.009	0.007	0.210	0.079
A-22-00	A-22-DWF-8/A-22-C-24-C	SSFR_1198	BR	0.025	0.025	0.000	0.075	0.026
A-22-00	A-22-DWF-8/A-22-C-24-C	SSFR_1199	BR	0.050	0.028	0.022	0.575	0.197
A-22-00	A-22-DWF-8/A-22-C-24-C	SSFR_1200	BR	0.040	0.039	0.001	0.799	0.282
A-22-00	A-22-DWF-8/A-22-C-24-C	SSFR_1201	BR	0.028	0.018	0.010	2.718	1.042
A-22-00	A-22-DWF-8/A-22-C-24-C	SSFR_1202	BR	0.079	0.079	0.000	3.130	1.528
A-22-00	A-22-DWF-8/A-22-C-24-C	SSFR_1203	BR	0.040	0.035	0.005	0.846	0.389
A-22-00	A-22-DWF-8/A-22-C-24-C	SSFR_1204	BR	0.010	0.010	0.000	0.016	0.005
A-22-00	A-22-DWF-10/A-22-C-29-C	SSFR_1205	BR	0.101	0.098	0.003	0.254	0.111
A-22-00	A-22-DWF-8/A-22-C-24-C	SSFR_1206	BR	0.016	0.014	0.002	0.847	0.354
A-22-00	A-22-DWF-8/A-22-C-24-C	SSFR_1207	BR	0.034	0.011	0.023	0.048	0.002
A-22-00	A-22-DWF-8/A-22-C-24-A	SSFR_1208	BR	0.017	0.014	0.003	0.038	0.019
A-22-00	A-22-DWF-8/A-22-C-24-A	SSFR_1209	BR	0.011	0.007	0.004	0.029	0.004
A-22-00	A-22-DWF-8/A-22-C-24-A	SSFR_1210	BR	0.014	0.008	0.006	0.063	0.014
A-22-00	A-22-DWF-8/A-22-C-24-A	SSFR_1211	BR	0.030	0.019	0.011	0.116	0.054
A-22-00	A-22-DWF-8/A-22-C-24-A	SSFR_1212	BR	0.014	0.014	0.000	0.032	0.008
A-22-00	A-22-DWF-8/A-22-C-24-A	SSFR_1213	BR	0.010	0.010	0.000	1.014	0.687
A-22-00	A-22-DWF-8/A-22-C-24-A	SSFR_1214	BR	0.037	0.037	0.000	0.045	0.020
A-22-00	A-22-DWF-8/A-22-C-24-A	SSFR_1215	BR	0.012	0.005	0.007	0.102	0.102
A-22-00	A-22-DWF-8/A-22-C-24-A	SSFR_1216	BR	0.007	0.007	0.000	0.011	0.002
A-22-00	A-22-DWF-8/A-22-C-24-A	SSFR_1217	BR	0.155	0.076	0.079	1.461	0.609
A-22-00	A-22-DWF-8/A-22-C-24-A	SSFR_1218	BR	0.044	0.030	0.014	0.284	0.146
A-22-00	A-22-DWF-8/A-22-C-24-A	SSFR_1219	BR	0.049	0.030	0.019	0.149	0.082
A-22-00	A-22-DWF-8/A-22-C-24-A	SSFR_1220	BR	0.025	0.024	0.001	0.050	0.020
A-22-00	A-22-DWF-8/A-22-C-24-A	SSFR_1221	BR	0.016	0.009	0.007	0.030	0.010
A-22-00	A-22-DWF-8/A-22-C-24-A	SSFR_1222	BR	0.022	0.015	0.007	0.595	0.329
A-22-00	A-22-DWF-8/A-22-C-24-A	SSFR_1223	BR	0.032	0.013	0.019	0.038	0.012
A-22-00	A-22-DWF-8/A-22-C-24-A	SSFR_1224	BR	0.044	0.036	0.008	0.142	0.089
A-22-00	A-22-DWF-8/A-22-C-24-A	SSFR_1225	BR	0.032	0.022	0.010	0.120	0.042
A-22-00	A-22-DWF-8/A-22-C-24-A	SSFR_1226	BR	0.020	0.011	0.009	0.679	0.400
A-22-00	A-22-DWF-8/A-22-C-24-A	SSFR_1227	BR	0.064	0.055	0.009	0.568	0.346

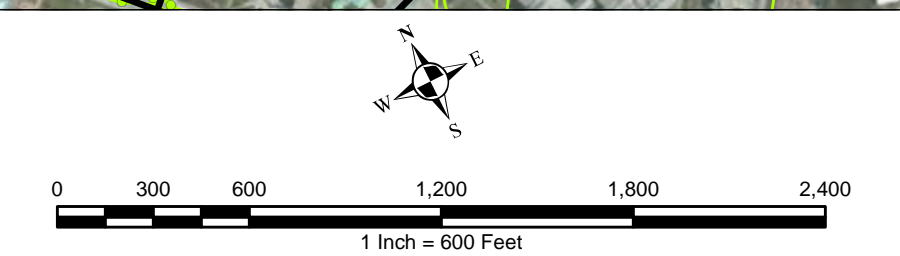
ALCOSAN POC	Model Subcatchment	Concept Municipal Project UID	BMP Type	Concept Municipal Project Area (acres)	Public ROW or Parcel		Concept Municipal Project Individual Drainage Area (acres)*	Concept Municipal Project Individual Project Impervious Drainage Area (acres)*
					Area of Municipal Project in Public ROW (acres)	Area of Municipal Project outside of Public ROW (acres)		
A-22-00	A-22-DWF-8/A-22-C-24-A	SSFR_1228	BR	0.023	0.022	0.001	0.201	0.090
A-22-00	A-22-DWF-8/A-22-C-24-A	SSFR_1229	BR	0.026	0.011	0.015	0.029	0.007
A-22-00	A-22-DWF-8/A-22-C-24-A	SSFR_1230	BR	0.005	0.004	0.001	0.179	0.060
A-22-00	A-22-DWF-8/A-22-C-24-A	SSFR_1231	BR	0.048	0.037	0.011	0.171	0.060
A-22-00	A-22-DWF-8/A-22-C-24-A	SSFR_1232	BR	0.011	0.011	0.000	0.074	0.009
A-22-00	A-22-DWF-8/A-22-C-24-A	SSFR_1233	BR	0.019	0.018	0.001	0.035	0.010
A-22-00	A-22-DWF-8/A-22-C-24-C	SSFR_1234	BR	0.008	0.008	0.000	0.527	0.231
A-22-00	A-22-DWF-8/A-22-C-24-C	SSFR_1235	BR	0.047	0.040	0.007	0.291	0.110
A-22-00	A-22-DWF-8/A-22-C-24-C	SSFR_1236	BR	0.039	0.027	0.012	1.566	0.532
A-22-00	A-22-DWF-8/A-22-C-24-C	SSFR_1237	BR	0.038	0.020	0.018	0.066	0.019
A-22-00	A-22-DWF-8/A-22-C-24-C	SSFR_1238	BR	0.020	0.015	0.005	0.835	0.229
A-22-00	A-22-DWF-8/A-22-C-24-C	SSFR_1239	BR	0.040	0.026	0.014	0.391	0.033
A-22-00	A-22-DWF-8/A-22-C-24-C	SSFR_1240	BR	0.116	0.115	0.001	0.657	0.299
A-22-00	A-22-DWF-8/A-22-C-24-C	SSFR_1241	BR	0.069	0.045	0.024	0.143	0.042
A-22-00	A-22-DWF-1/A-22-C-1-B	SSFR_2001	IB	0.016	0.005	0.011	1.093	0.183
A-22-00	A-22-DWF-1/A-22-C-1-B	SSFR_2002	IB	0.086	0.017	0.069	1.182	0.084
A-22-00	A-22-DWF-1/A-22-C-1-B	SSFR_2003	IB	0.064	0.008	0.056	1.408	0.210
A-22-00	A-22-DWF-1/A-22-C-1-B	SSFR_2004	IB	0.064	0.007	0.057	0.336	0.055
A-22-00	A-22-DWF-1/A-22-C-1-B	SSFR_2005	IB	0.021	0.013	0.008	0.898	0.243
A-22-00	A-22-DWF-8/A-22-C-18-D	SSFR_2006	IB	0.014	0.005	0.009	0.144	0.036
A-22-00	A-22-DWF-8/A-22-C-18-D	SSFR_2007	IB	0.129	0.022	0.107	1.429	0.403
A-22-00	A-22-DWF-8/A-22-C-18-D	SSFR_2008	IB	0.079	0.025	0.054	2.309	0.924
A-22-00	A-22-DWF-8/A-22-C-18-D	SSFR_2009	IB	0.025	0.008	0.017	0.071	0.028
A-22-00	A-22-DWF-8/A-22-C-18-D	SSFR_2010	IB	0.012	0.005	0.007	0.027	0.006
A-22-00	A-22-DWF-1/A-22-C-1-A	SSFR_3001	GS	0.067	0.000	0.067	1.128	0.964
A-22-00	A-22-DWF-8/A-22-C-18-D	SSFR_4001	VF	0.040	0.007	0.033	0.329	0.067
A-22-00	A-22-DWF-8/A-22-C-18-D	SSFR_4002	VF	0.025	0.013	0.012	2.083	0.862



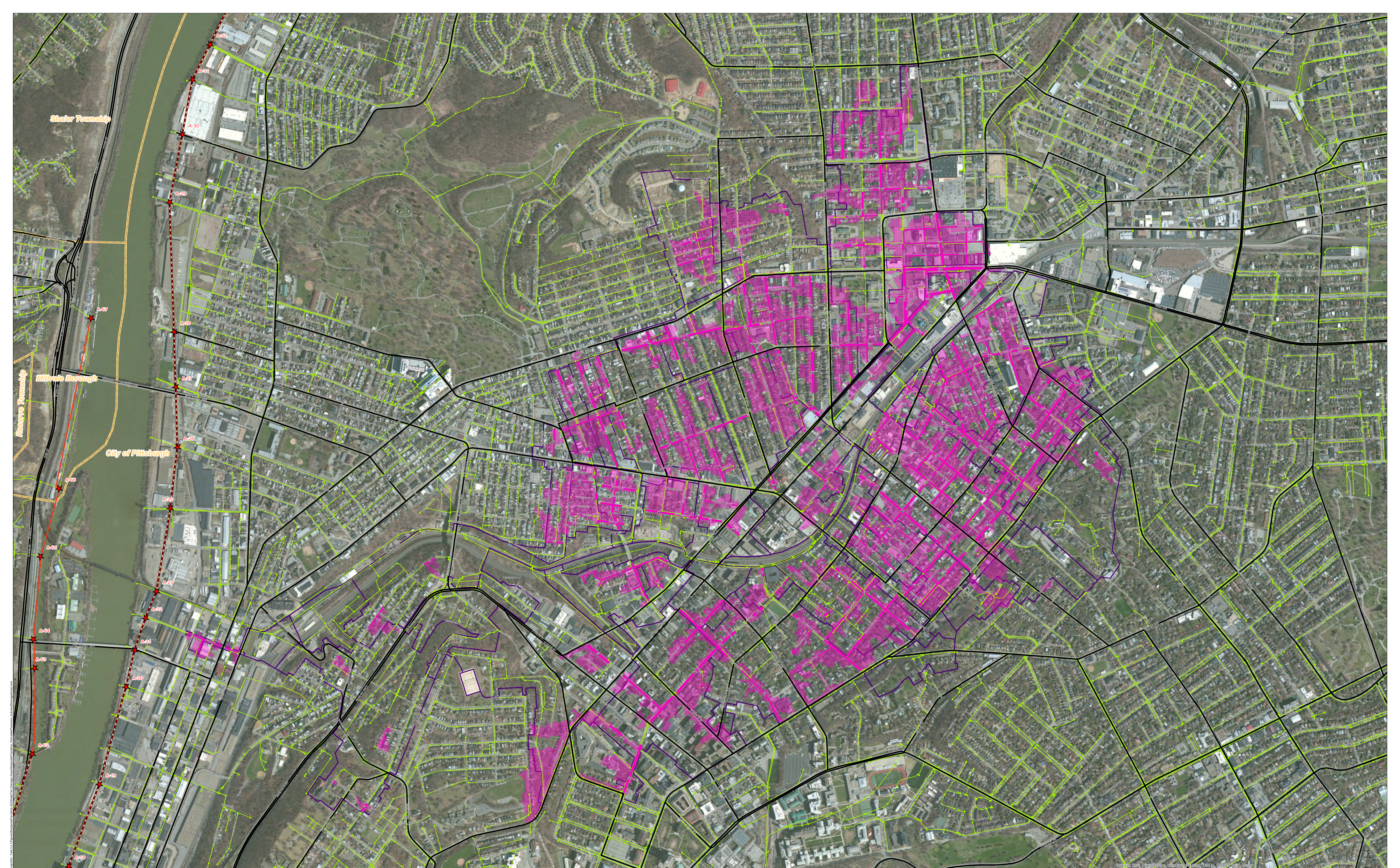
- ★ ALCOSAN Structures
- ALCOSAN Shallow-Cut Interceptor
- ALCOSAN Deep Tunnel Interceptor
- One Overall Manholes
- One Overall Sewerlines

- Municipal Projects**
- Infiltration Basin
 - Grass Swale
 - Vegetated Filter Strip
 - Bioretention
 - Permeable Pavement

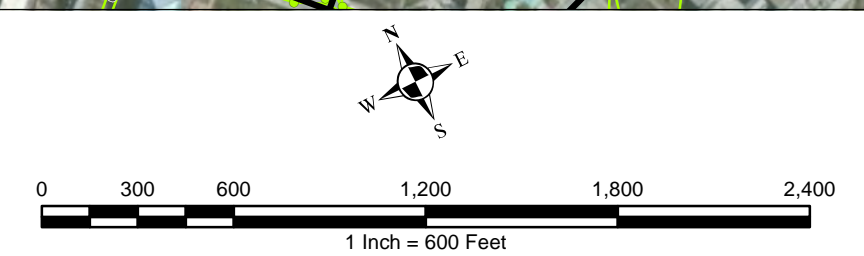
- State Roads
- Combined Sewer Subcatchment
- Municipal Boundaries



ALCOSAN GSI Project
 Shadyside / Friendship (A-22)
 Concept Municipal GSI Projects



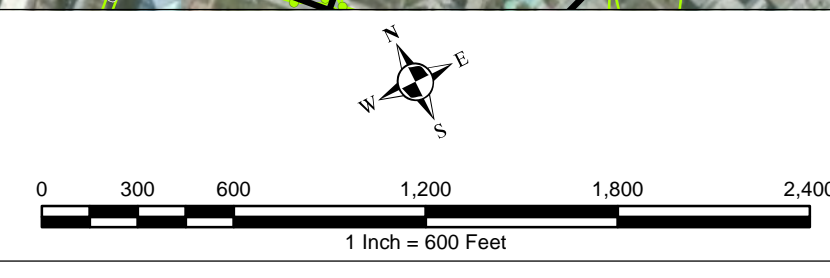
- ★ ALCOSAN Structures
- ALCOSAN Shallow-Cut Interceptor
- ALCOSAN Deep Tunnel Interceptor
- One Overall Manholes
- One Overall Sewerlines
- Permeable Pavement Drainage Areas
- Permeable Pavement Drainage Areas
- State Roads
- Combined Sewer Subcatchment
- Municipal Boundaries



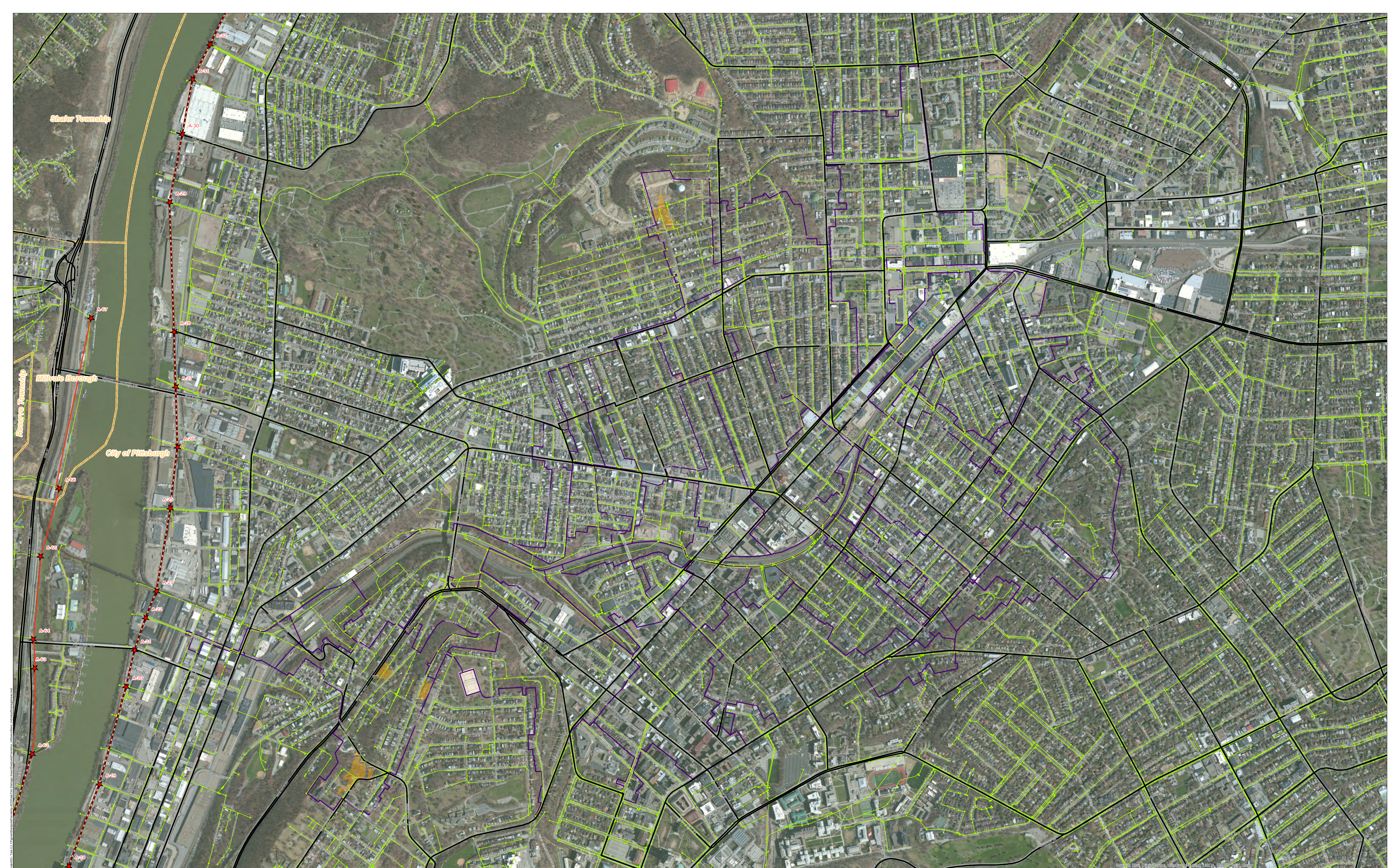
ALCOSAN GSI Project
 Shadyside / Friendship (A-22)
 Concept Municipal Permeable Pavement GSI Projects
 Individual Project Drainage Areas



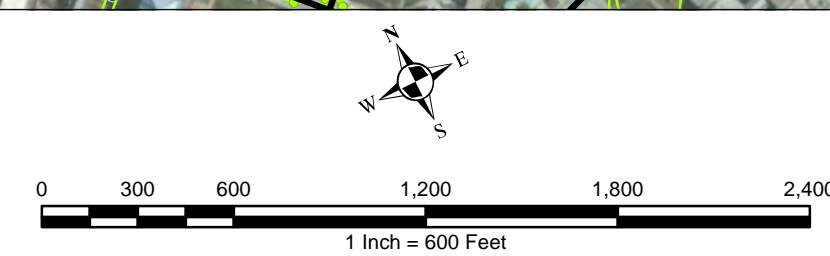
- ★ ALCOSAN Structures
- ALCOSAN Shallow-Cut Interceptor
- ALCOSAN Deep Tunnel Interceptor
- One Overall Manholes
- One Overall Sewerlines
- Bioretention Drainage Areas
- Bioretention Drainage Areas
- State Roads
- Combined Sewer Subcatchment
- Municipal Boundaries



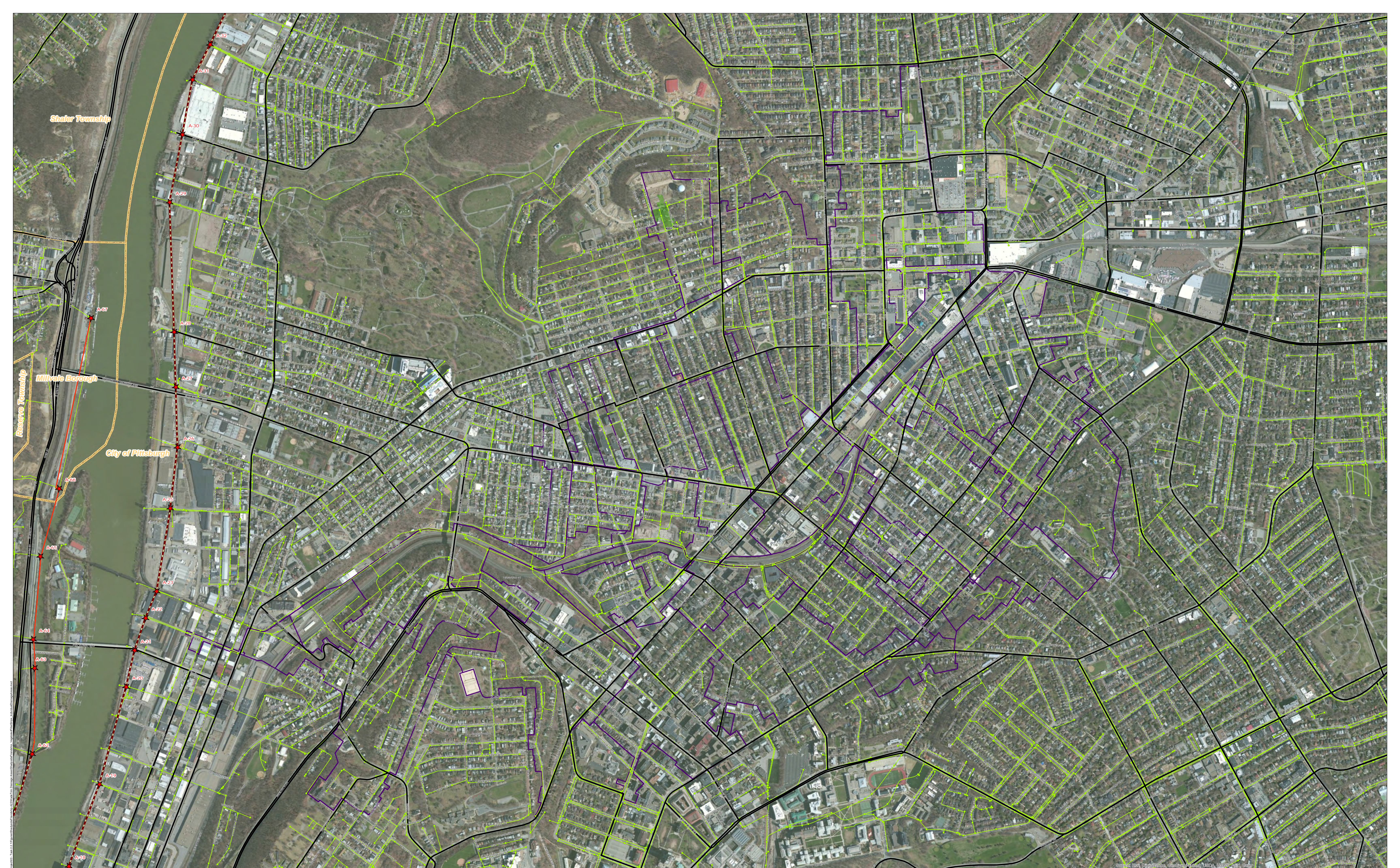
ALCOSAN GSI Project
 Shadyside / Friendship (A-22)
 Concept Municipal Bioretention GSI Projects
 Individual Project Drainage Areas



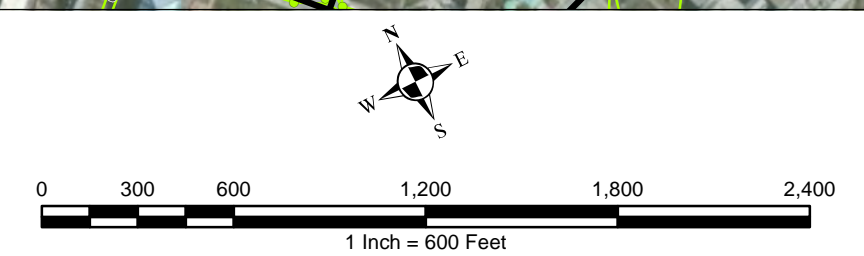
- ★ ALCOSAN Structures
- ALCOSAN Shallow-Cut Interceptor
- ALCOSAN Deep Tunnel Interceptor
- One Overall Manholes
- One Overall Sewerlines
- Infiltration Basin Municipal Projects
- Infiltration Basin Drainage Areas
- State Roads
- Combined Sewer Subcatchment
- Municipal Boundaries



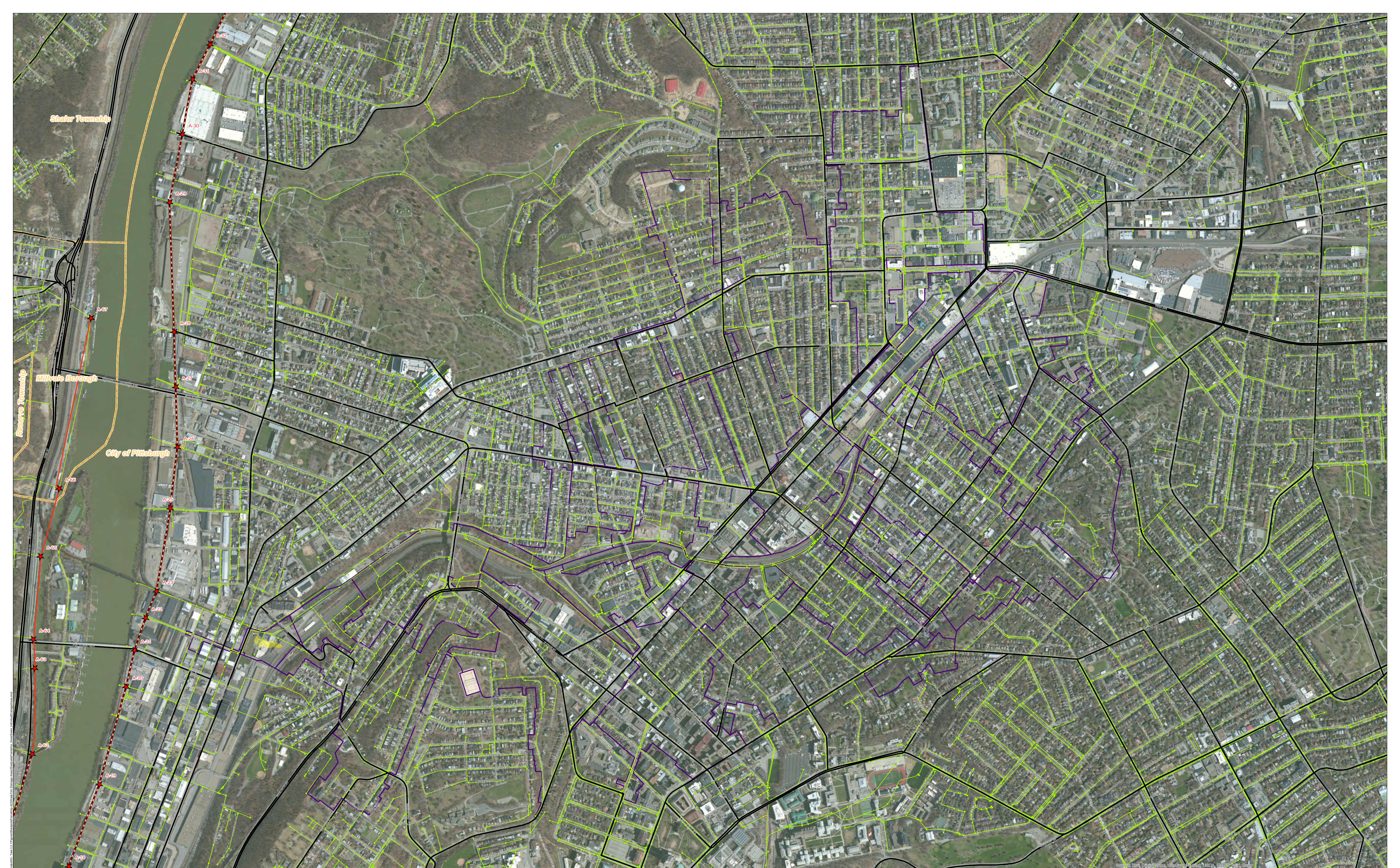
ALCOSAN GSI Project
 Shadyside / Friendship (A-22)
 Concept Municipal Infiltration Basin GSI Projects
 Individual Project Drainage Areas



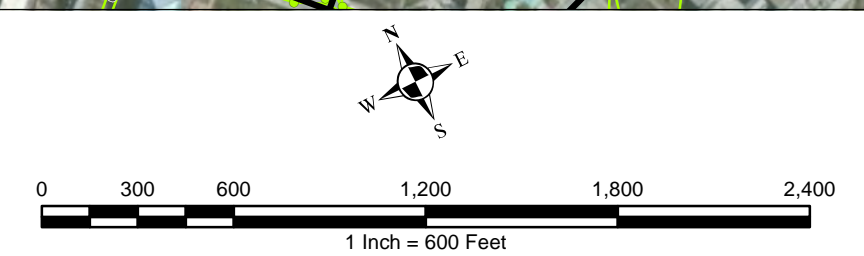
- ★ ALCOSAN Structures
- ALCOSAN Shallow-Cut Interceptor
- ALCOSAN Deep Tunnel Interceptor
- One Overall Manholes
- One Overall Sewerlines
- Vegetated Filter Strip Municipal Projects
- Vegetated Filter Strip Drainage Areas
- State Roads
- Combined Sewer Subcatchment
- Municipal Boundaries



ALCOSAN GSI Project
 Shadyside / Friendship (A-22)
 Concept Municipal Vegetated Filter Strip GSI Projects
 Individual Project Drainage Areas



- ★ ALCOSAN Structures
- ALCOSAN Shallow-Cut Interceptor
- ALCOSAN Deep Tunnel Interceptor
- One Overall Manholes
- One Overall Sewerlines
- Grass Swale Drainage Areas
- Grass Swale Drainage Areas
- State Roads
- Combined Sewer Subcatchment
- Municipal Boundaries



ALCOSAN GSI Project
 Shadyside / Friendship (A-22)
 Concept Municipal Grass Swale GSI Projects
 Individual Project Drainage Areas

Aerial imagery provided by Google Earth. Map data provided by Esri, DeLorme, Garmin, IGN, Intermap, iSD, GEBCO, USGS, AeroGRID, IGN, Esri, Swisstopo, and others.

**Shadyside-Friendship Concept Commercial / Institutional Permeable Pavement, Green Roof, and Special Case GSI Projects:
Summary Table**

February 21, 2014
Revised October 10, 2014

ALCOSAN POC	Model Subcatchment	Concept Comm / Inst Project UID	BMP Type	Concept Municipal Project Area (acres)	Taxable (acres)	Exempt (acres)	Provisionally Exempt (acres)	Public ROW (acres)
A-22-00	A-22-DWF-1/A-22-C-1-A	SSFR_6001	CPP	0.529	0.505	0.000	0.000	0.024
A-22-00	A-22-DWF-1/A-22-C-1-A	SSFR_6002	CPP	0.583	0.583	0.000	0.000	0.000
A-22-00	A-22-DWF-5/A-22-C-7-B	SSFR_6003	CPP	0.410	0.391	0.000	0.000	0.019
A-22-00	A-22-DWF-5/A-22-C-7-B	SSFR_6004	CPP	0.209	0.001	0.000	0.000	0.208
A-22-00	A-22-DWF-5/A-22-C-7-B	SSFR_6005	CPP	0.125	0.123	0.000	0.000	0.002
A-22-00	A-22-DWF-5/A-22-C-7-B	SSFR_6006	CPP	0.230	0.202	0.000	0.000	0.028
A-22-00	A-22-DWF-3/A-22-C-3	SSFR_6007	CPP	1.772	1.736	0.017	0.001	0.018
A-22-00	A-22-DWF-5/A-22-C-10	SSFR_6008	CPP	0.665	0.618	0.000	0.000	0.047
A-22-00	A-22-DWF-5/A-22-C-10	SSFR_6009	CPP	0.243	0.095	0.000	0.000	0.148
A-22-00	A-22-DWF-5/A-22-C-7-B	SSFR_6010	CPP	0.149	0.149	0.000	0.000	0.000
A-22-00	A-22-DWF-5/A-22-C-7-B	SSFR_6011	CPP	0.120	0.110	0.000	0.000	0.010
A-22-00	A-22-DWF-5/A-22-C-7-B	SSFR_6012	CPP	0.301	0.009	0.070	0.000	0.222
A-22-00	A-22-DWF-5/A-22-C-7-A	SSFR_6013	CPP	0.219	0.219	0.000	0.000	0.000
A-22-00	A-22-DWF-5/A-22-C-7-A	SSFR_6014	CPP	0.377	0.000	0.192	0.000	0.185
A-22-00	A-22-DWF-5/A-22-C-7-A	SSFR_6015	CPP	0.115	0.000	0.000	0.000	0.115
A-22-00	A-22-DWF-5/A-22-C-7-A	SSFR_6016	CPP	0.276	0.000	0.000	0.000	0.276
A-22-00	A-22-DWF-5/A-22-C-7-A	SSFR_6017	CPP	0.625	0.000	0.625	0.000	0.000
A-22-00	A-22-DWF-5/A-22-C-7-A	SSFR_6018	CPP	0.362	0.002	0.000	0.000	0.360
A-22-00	A-22-DWF-5/A-22-C-7-A	SSFR_6019	CPP	1.008	0.000	0.996	0.000	0.012
A-22-00	A-22-DWF-5/A-22-C-7-A	SSFR_6020	CPP	0.399	0.384	0.012	0.000	0.003
A-22-00	A-22-DWF-5/A-22-C-7-A	SSFR_6021	CPP	0.061	0.053	0.000	0.000	0.008
A-22-00	A-22-DWF-5/A-22-C-7-A	SSFR_6022	CPP	0.154	0.003	0.149	0.000	0.002
A-22-00	A-22-DWF-5/A-22-C-7-A	SSFR_6023	CPP	0.137	0.000	0.000	0.000	0.137
A-22-00	A-22-DWF-5/A-22-C-7-A	SSFR_6024	CPP	0.049	0.048	0.000	0.000	0.001
A-22-00	A-22-DWF-5/A-22-C-7-A	SSFR_6025	CPP	0.244	0.244	0.000	0.000	0.000

ALCOSAN POC	Model Subcatchment	Concept Comm / Inst Project UID	BMP Type	Concept Municipal Project Area (acres)	Taxable (acres)	Exempt (acres)	Provisionally Exempt (acres)	Public ROW (acres)
A-22-00	A-22-DWF-5/A-22-C-10	SSFR_6026	CPP	0.906	0.430	0.000	0.000	0.476
A-22-00	A-22-DWF-5/A-22-C-6-A	SSFR_6027	CPP	0.177	0.000	0.000	0.000	0.177
A-22-00	A-22-DWF-5/A-22-C-6-A	SSFR_6028	CPP	0.190	0.167	0.000	0.000	0.023
A-22-00	A-22-DWF-5/A-22-C-6-A	SSFR_6029	CPP	0.196	0.001	0.000	0.000	0.195
A-22-00	A-22-DWF-5/A-22-C-6-A	SSFR_6030	CPP	0.195	0.193	0.000	0.000	0.002
A-22-00	A-22-DWF-7/A-22-C-9	SSFR_6031	CPP	0.175	0.002	0.000	0.000	0.173
A-22-00	A-22-DWF-7/A-22-C-9	SSFR_6032	CPP	0.255	0.165	0.000	0.000	0.090
A-22-00	A-22-DWF-6/A-22-C-31	SSFR_6033	CPP	0.357	0.027	0.058	0.000	0.272
A-22-00	A-22-DWF-5/A-22-C-6-A	SSFR_6034	CPP	0.054	0.053	0.000	0.000	0.001
A-22-00	A-22-DWF-5/A-22-C-6-A	SSFR_6035	CPP	0.140	0.028	0.000	0.000	0.112
A-22-00	A-22-DWF-5/A-22-C-6-A	SSFR_6036	CPP	0.345	0.136	0.000	0.000	0.209
A-22-00	A-22-DWF-7/A-22-C-11-B	SSFR_6037	CPP	0.857	0.000	0.856	0.000	0.001
A-22-00	A-22-DWF-6/A-22-C-15-B	SSFR_6038	CPP	0.597	0.000	0.562	0.000	0.035
A-22-00	A-22-DWF-6/A-22-C-14	SSFR_6039	CPP	0.061	0.061	0.000	0.000	0.000
A-22-00	A-22-DWF-6/A-22-C-14	SSFR_6040	CPP	0.132	0.064	0.000	0.000	0.068
A-22-00	A-22-DWF-6/A-22-C-14	SSFR_6041	CPP	0.016	0.011	0.000	0.000	0.005
A-22-00	A-22-DWF-6/A-22-C-15-C	SSFR_6042	CPP	0.155	0.155	0.000	0.000	0.000
A-22-00	A-22-DWF-6/A-22-C-16-B	SSFR_6043	CPP	1.169	0.000	0.129	0.000	1.040
A-22-00	A-22-DWF-6/A-22-C-17	SSFR_6044	CPP	0.357	0.273	0.000	0.000	0.084
A-22-00	A-22-DWF-6/A-22-C-17	SSFR_6045	CPP	0.161	0.158	0.000	0.000	0.003
A-22-00	A-22-DWF-6/A-22-C-17	SSFR_6046	CPP	0.236	0.016	0.000	0.000	0.220
A-22-00	A-22-DWF-6/A-22-C-17	SSFR_6047	CPP	0.745	0.745	0.000	0.000	0.000
A-22-00	A-22-DWF-8/A-22-C-18-A	SSFR_6048	CPP	0.797	0.202	0.000	0.000	0.595
A-22-00	A-22-DWF-8/A-22-C-18-A	SSFR_6049	CPP	0.347	0.090	0.000	0.000	0.257
A-22-00	A-22-DWF-6/A-22-C-17	SSFR_6050	CPP	0.360	0.149	0.000	0.000	0.211
A-22-00	A-22-DWF-6/A-22-C-17	SSFR_6051	CPP	0.294	0.294	0.000	0.000	0.000
A-22-00	A-22-DWF-6/A-22-C-17	SSFR_6052	CPP	0.948	0.002	0.058	0.000	0.888
A-22-00	A-22-DWF-6/A-22-C-17	SSFR_6053	CPP	0.128	0.092	0.000	0.000	0.036
A-22-00	A-22-DWF-6/A-22-C-17	SSFR_6054	CPP	0.168	0.000	0.168	0.000	0.000
A-22-00	A-22-DWF-8/A-22-C-18-A	SSFR_6055	CPP	0.548	0.544	0.000	0.000	0.004

ALCOSAN POC	Model Subcatchment	Concept Comm / Inst Project UID	BMP Type	Concept Municipal Project Area (acres)	Taxable (acres)	Exempt (acres)	Provisionally Exempt (acres)	Public ROW (acres)
A-22-00	A-22-DWF-8/A-22-C-18-B	SSFR_6056	CPP	0.885	0.634	0.000	0.000	0.251
A-22-00	A-22-DWF-8/A-22-C-18-A	SSFR_6057	CPP	0.138	0.138	0.000	0.000	0.000
A-22-00	A-22-DWF-8/A-22-C-18-A	SSFR_6058	CPP	0.194	0.194	0.000	0.000	0.000
A-22-00	A-22-DWF-7/A-22-C-21-A	SSFR_6059	CPP	0.276	0.276	0.000	0.000	0.000
A-22-00	A-22-DWF-6/A-22-C-16-B	SSFR_6060	CPP	0.046	0.002	0.000	0.000	0.044
A-22-00	A-22-DWF-6/A-22-C-16-B	SSFR_6061	CPP	0.120	0.120	0.000	0.000	0.000
A-22-00	A-22-DWF-8/A-22-C-18-C	SSFR_6062	CPP	0.345	0.186	0.000	0.000	0.159
A-22-00	A-22-DWF-8/A-22-C-24-C	SSFR_6063	CPP	0.056	0.025	0.000	0.000	0.031
A-22-00	A-22-DWF-8/A-22-C-24-C	SSFR_6064	CPP	0.024	0.015	0.000	0.000	0.009
A-22-00	A-22-DWF-8/A-22-C-24-C	SSFR_6065	CPP	0.475	0.000	0.475	0.000	0.000
A-22-00	A-22-DWF-8/A-22-C-24-C	SSFR_6066	CPP	0.084	0.007	0.000	0.000	0.077
A-22-00	A-22-DWF-8/A-22-C-24-C	SSFR_6067	CPP	0.156	0.000	0.156	0.000	0.000
A-22-00	A-22-DWF-8/A-22-C-24-C	SSFR_6068	CPP	0.072	0.038	0.000	0.000	0.034
A-22-00	A-22-DWF-8/A-22-C-19-B	SSFR_6069	CPP	0.472	0.106	0.000	0.000	0.366
A-22-00	A-22-DWF-8/A-22-C-24-C	SSFR_6071	CPP	0.359	0.087	0.000	0.000	0.272
A-22-00	A-22-DWF-8/A-22-C-19-A	SSFR_6072	CPP	0.666	0.018	0.000	0.000	0.648
A-22-00	A-22-DWF-8/A-22-C-19-A	SSFR_6073	CPP	0.371	0.371	0.000	0.000	0.000
A-22-00	A-22-DWF-8/A-22-C-19-A	SSFR_6074	CPP	0.092	0.092	0.000	0.000	0.000
A-22-00	A-22-DWF-8/A-22-C-19-A	SSFR_6075	CPP	0.787	0.143	0.000	0.000	0.644
A-22-00	A-22-DWF-8/A-22-C-19-A	SSFR_6076	CPP	0.075	0.040	0.000	0.000	0.035
A-22-00	A-22-DWF-8/A-22-C-19-A	SSFR_6077	CPP	0.226	0.226	0.000	0.000	0.000
A-22-00	A-22-DWF-8/A-22-C-19-A	SSFR_6078	CPP	0.233	0.233	0.000	0.000	0.000
A-22-00	A-22-DWF-8/A-22-C-24-D	SSFR_6079	CPP	0.085	0.076	0.000	0.000	0.009
A-22-00	A-22-DWF-8/A-22-C-19-A	SSFR_6080	CPP	0.068	0.001	0.067	0.000	0.000
A-22-00	A-22-DWF-7/A-22-C-22-A	SSFR_6081	CPP	0.115	0.000	0.106	0.000	0.009
A-22-00	A-22-DWF-7/A-22-C-22-B	SSFR_6082	CPP	0.116	0.000	0.116	0.000	0.000
A-22-00	A-22-DWF-7/A-22-C-22-B	SSFR_6083	CPP	0.122	0.000	0.034	0.000	0.088
A-22-00	A-22-DWF-12/A-22-C-23-A	SSFR_6084	CPP	0.070	0.067	0.000	0.000	0.003
A-22-00	A-22-DWF-12/A-22-C-23-A	SSFR_6085	CPP	0.369	0.213	0.156	0.000	0.000
A-22-00	A-22-DWF-12/A-22-C-23-A	SSFR_6086	CPP	0.082	0.071	0.000	0.000	0.011

ALCOSAN POC	Model Subcatchment	Concept Comm / Inst Project UID	BMP Type	Concept Municipal Project Area (acres)	Taxable (acres)	Exempt (acres)	Provisionally Exempt (acres)	Public ROW (acres)
A-22-00	A-22-DWF-12/A-22-C-23-A	SSFR_6087	CPP	0.124	0.000	0.039	0.000	0.085
A-22-00	A-22-DWF-12/A-22-C-23-A	SSFR_6088	CPP	0.190	0.190	0.000	0.000	0.000
A-22-00	A-22-DWF-12/A-22-C-23-A	SSFR_6089	CPP	0.142	0.077	0.000	0.000	0.065
A-22-00	A-22-DWF-12/A-22-C-23-B	SSFR_6090	CPP	0.257	0.000	0.257	0.000	0.000
A-22-00	A-22-DWF-12/A-22-C-23-A	SSFR_6091	CPP	0.187	0.000	0.187	0.000	0.000
A-22-00	A-22-DWF-12/A-22-C-23-A	SSFR_6092	CPP	0.098	0.016	0.000	0.000	0.082
A-22-00	A-22-DWF-12/A-22-C-23-A	SSFR_6093	CPP	0.131	0.127	0.000	0.000	0.004
A-22-00	A-22-DWF-9/A-22-C-28-B	SSFR_6094	CPP	0.126	0.006	0.000	0.000	0.120
A-22-00	A-22-DWF-11/A-22-C-27	SSFR_6095	CPP	0.202	0.189	0.000	0.000	0.013
A-22-00	A-22-DWF-11/A-22-C-27	SSFR_6096	CPP	0.017	0.017	0.000	0.000	0.000
A-22-00	A-22-DWF-11/A-22-C-27	SSFR_6097	CPP	0.149	0.149	0.000	0.000	0.000
A-22-00	A-22-DWF-11/A-22-C-27	SSFR_6098	CPP	0.105	0.094	0.000	0.000	0.011
A-22-00	A-22-DWF-11/A-22-C-27	SSFR_6099	CPP	0.140	0.001	0.000	0.000	0.139
A-22-00	A-22-DWF-11/A-22-C-27	SSFR_6100	CPP	0.143	0.001	0.000	0.000	0.142
A-22-00	A-22-DWF-11/A-22-C-27	SSFR_6101	CPP	0.101	0.101	0.000	0.000	0.000
A-22-00	A-22-DWF-8/A-22-C-24-D	SSFR_6102	CPP	0.310	0.310	0.000	0.000	0.000
A-22-00	A-22-DWF-8/A-22-C-24-D	SSFR_6103	CPP	0.159	0.159	0.000	0.000	0.000
A-22-00	A-22-DWF-8/A-22-C-24-D	SSFR_6104	CPP	0.276	0.275	0.000	0.000	0.001
A-22-00	A-22-DWF-8/A-22-C-24-D	SSFR_6105	CPP	0.133	0.133	0.000	0.000	0.000
A-22-00	A-22-DWF-8/A-22-C-24-D	SSFR_6106	CPP	0.339	0.334	0.000	0.000	0.005
A-22-00	A-22-DWF-8/A-22-C-24-D	SSFR_6107	CPP	0.159	0.151	0.006	0.000	0.002
A-22-00	A-22-DWF-9/A-22-C-28-A	SSFR_6108	CPP	0.124	0.123	0.000	0.000	0.001
A-22-00	A-22-DWF-9/A-22-C-28-A	SSFR_6109	CPP	0.143	0.000	0.000	0.000	0.143
A-22-00	A-22-DWF-9/A-22-C-28-A	SSFR_6110	CPP	0.928	0.907	0.000	0.000	0.021
A-22-00	A-22-DWF-9/A-22-C-28-A	SSFR_6111	CPP	0.894	0.196	0.000	0.000	0.698
A-22-00	A-22-DWF-9/A-22-C-28-A	SSFR_6112	CPP	0.070	0.070	0.000	0.000	0.000
A-22-00	A-22-DWF-9/A-22-C-28-A	SSFR_6113	CPP	0.388	0.001	0.000	0.000	0.387
A-22-00	A-22-DWF-9/A-22-C-28-A	SSFR_6114	CPP	0.266	0.000	0.266	0.000	0.000
A-22-00	A-22-DWF-9/A-22-C-28-A	SSFR_6115	CPP	0.176	0.176	0.000	0.000	0.000
A-22-00	A-22-DWF-9/A-22-C-28-A	SSFR_6116	CPP	0.323	0.000	0.091	0.000	0.232

ALCOSAN POC	Model Subcatchment	Concept Comm / Inst Project UID	BMP Type	Concept Municipal Project Area (acres)	Taxable (acres)	Exempt (acres)	Provisionally Exempt (acres)	Public ROW (acres)
A-22-00	A-22-DWF-9/A-22-C-28-B	SSFR_6117	CPP	0.094	0.006	0.000	0.000	0.088
A-22-00	A-22-DWF-11/A-22-C-27	SSFR_6118	CPP	0.489	0.372	0.012	0.000	0.105
A-22-00	A-22-DWF-11/A-22-C-27	SSFR_6119	CPP	0.119	0.000	0.113	0.000	0.006
A-22-00	A-22-DWF-11/A-22-C-27	SSFR_6120	CPP	0.091	0.010	0.036	0.000	0.045
A-22-00	A-22-DWF-11/A-22-C-27	SSFR_6121	CPP	0.259	0.018	0.232	0.000	0.009
A-22-00	A-22-DWF-11/A-22-C-27	SSFR_6122	CPP	0.065	0.000	0.062	0.000	0.003
A-22-00	A-22-DWF-11/A-22-C-27	SSFR_6123	CPP	0.027	0.000	0.017	0.000	0.010
A-22-00	A-22-DWF-11/A-22-C-27	SSFR_6124	CPP	3.035	0.002	0.009	0.000	3.024
A-22-00	A-22-DWF-8/A-22-C-24-C	SSFR_6125	CPP	0.068	0.067	0.000	0.000	0.001
A-22-00	A-22-DWF-8/A-22-C-24-C	SSFR_6126	CPP	0.177	0.057	0.000	0.000	0.120
A-22-00	A-22-DWF-8/A-22-C-24-C	SSFR_6127	CPP	0.127	0.000	0.127	0.000	0.000
A-22-00	A-22-DWF-8/A-22-C-24-C	SSFR_6128	CPP	0.197	0.197	0.000	0.000	0.000
A-22-00	A-22-DWF-8/A-22-C-24-A	SSFR_6129	CPP	0.099	0.099	0.000	0.000	0.000
A-22-00	A-22-DWF-8/A-22-C-24-A	SSFR_6130	CPP	0.138	0.138	0.000	0.000	0.000
A-22-00	A-22-DWF-8/A-22-C-24-A	SSFR_6131	CPP	0.144	0.144	0.000	0.000	0.000
A-22-00	A-22-DWF-8/A-22-C-24-A	SSFR_6132	CPP	1.220	1.220	0.000	0.000	0.000
A-22-00	A-22-DWF-8/A-22-C-24-A	SSFR_6133	CPP	0.914	0.914	0.000	0.000	0.000
A-22-00	A-22-DWF-8/A-22-C-24-A	SSFR_6134	CPP	0.372	0.313	0.057	0.000	0.002
A-22-00	A-22-DWF-8/A-22-C-24-A	SSFR_6135	CPP	0.081	0.003	0.000	0.000	0.078
A-22-00	A-22-DWF-10/A-22-C-29-C	SSFR_6136	CPP	0.585	0.585	0.000	0.000	0.000
A-22-00	A-22-DWF-10/A-22-C-29-C	SSFR_6137	CPP	0.062	0.062	0.000	0.000	0.000
A-22-00	A-22-DWF-10/A-22-C-29-C	SSFR_6138	CPP	0.564	0.000	0.294	0.000	0.270
A-22-00	A-22-DWF-8/A-22-C-24-A	SSFR_6139	CPP	0.956	0.000	0.259	0.000	0.697
A-22-00	A-22-DWF-8/A-22-C-24-A	SSFR_6140	CPP	0.297	0.001	0.000	0.000	0.296
A-22-00	A-22-DWF-8/A-22-C-24-A	SSFR_6141	CPP	0.126	0.126	0.000	0.000	0.000
A-22-00	A-22-DWF-8/A-22-C-24-A	SSFR_6142	CPP	0.076	0.076	0.000	0.000	0.000
A-22-00	A-22-DWF-8/A-22-C-24-A	SSFR_6143	CPP	0.094	0.094	0.000	0.000	0.000
A-22-00	A-22-DWF-8/A-22-C-24-A	SSFR_6146	CPP	0.168	0.000	0.017	0.000	0.151
A-22-00	A-22-DWF-8/A-22-C-24-A	SSFR_6147	CPP	0.089	0.000	0.050	0.000	0.039
A-22-00	A-22-DWF-8/A-22-C-24-A	SSFR_6148	CPP	0.230	0.000	0.021	0.000	0.209

ALCOSAN POC	Model Subcatchment	Concept Comm / Inst Project UID	BMP Type	Concept Municipal Project Area (acres)	Taxable (acres)	Exempt (acres)	Provisionally Exempt (acres)	Public ROW (acres)
A-22-00	A-22-DWF-10/A-22-C-29-C	SSFR_6149	CPP	0.338	0.338	0.000	0.000	0.000
A-22-00	A-22-DWF-8/A-22-C-24-A	SSFR_6150	CPP	0.485	0.016	0.142	0.000	0.327
A-22-00	A-22-DWF-8/A-22-C-24-A	SSFR_6151	CPP	0.580	0.000	0.580	0.000	0.000
A-22-00	A-22-DWF-8/A-22-C-24-A	SSFR_6152	CPP	0.387	0.000	0.387	0.000	0.000
A-22-00	A-22-DWF-8/A-22-C-24-A	SSFR_6153	CPP	1.096	0.000	0.011	0.000	1.085
A-22-00	A-22-DWF-8/A-22-C-24-A	SSFR_6154	CPP	0.567	0.120	0.000	0.000	0.447
A-22-00	A-22-DWF-8/A-22-C-24-A	SSFR_6155	CPP	0.419	0.000	0.002	0.000	0.417
A-22-00	A-22-DWF-8/A-22-C-24-A	SSFR_6156	CPP	0.296	0.000	0.000	0.296	0.000
A-22-00	A-22-DWF-8/A-22-C-24-A	SSFR_6157	CPP	0.705	0.000	0.693	0.000	0.012
A-22-00	A-22-DWF-8/A-22-C-24-A	SSFR_6158	CPP	0.276	0.000	0.276	0.000	0.000
A-22-00	A-22-DWF-8/A-22-C-24-A	SSFR_6159	CPP	0.287	0.091	0.000	0.000	0.196
A-22-00	A-22-DWF-8/A-22-C-24-A	SSFR_6160	CPP	0.062	0.018	0.000	0.000	0.044
A-22-00	A-22-DWF-8/A-22-C-24-A	SSFR_6161	CPP	0.315	0.315	0.000	0.000	0.000
A-22-00	A-22-DWF-8/A-22-C-24-A	SSFR_6162	CPP	0.561	0.561	0.000	0.000	0.000
A-22-00	A-22-DWF-8/A-22-C-24-A	SSFR_6163	CPP	0.414	0.032	0.183	0.000	0.199
A-22-00	A-22-DWF-8/A-22-C-24-A	SSFR_6164	CPP	0.185	0.000	0.185	0.000	0.000
A-22-00	A-22-DWF-8/A-22-C-24-A	SSFR_6165	CPP	0.399	0.000	0.335	0.000	0.064
A-22-00	A-22-DWF-8/A-22-C-24-A	SSFR_6166	CPP	0.196	0.194	0.001	0.000	0.001
A-22-00	A-22-DWF-5/A-22-C-7-A	SSFR_6167	CPP	0.087	0.013	0.000	0.000	0.074
A-22-00	A-22-DWF-5/A-22-C-7-A	SSFR_6168	CPP	0.029	0.000	0.029	0.000	0.000
A-22-00	A-22-DWF-5/A-22-C-7-A	SSFR_6169	CPP	0.058	0.000	0.003	0.000	0.055
A-22-00	A-22-DWF-5/A-22-C-10	SSFR_6170	CPP	0.231	0.219	0.000	0.000	0.012
A-22-00	A-22-DWF-5/A-22-C-6-A	SSFR_6171	CPP	0.073	0.073	0.000	0.000	0.000
A-22-00	A-22-DWF-7/A-22-C-22-B	SSFR_7001	GR	0.154	0.019	0.000	0.000	0.135
A-22-00	A-22-DWF-11/A-22-C-27	SSFR_7002	GR	0.138	0.138	0.000	0.000	0.000
A-22-00	A-22-DWF-6/A-22-C-16-B	SSFR_7003	GR	0.198	0.192	0.000	0.000	0.006
A-22-00	A-22-DWF-7/A-22-C-22-A	SSFR_7004	GR	0.118	0.000	0.118	0.000	0.000
A-22-00	A-22-DWF-8/A-22-C-24-C	SSFR_7005	GR	0.249	0.117	0.000	0.000	0.132
A-22-00	A-22-DWF-8/A-22-C-24-A	SSFR_7006	GR	0.118	0.116	0.000	0.000	0.002
A-22-00	A-22-DWF-9/A-22-C-28-A	SSFR_7007	GR	0.312	0.003	0.306	0.000	0.003

ALCOSAN POC	Model Subcatchment	Concept Comm / Inst Project UID	BMP Type	Concept Municipal Project Area (acres)	Taxable (acres)	Exempt (acres)	Provisionally Exempt (acres)	Public ROW (acres)
A-22-00	A-22-DWF-6/A-22-C-15-A	SSFR_7008	GR	2.408	0.000	2.369	0.000	0.039
A-22-00	A-22-DWF-11/A-22-C-27	SSFR_7009	GR	0.174	0.001	0.000	0.000	0.173
A-22-00	A-22-DWF-5/A-22-C-7-A	SSFR_7010	GR	0.221	0.001	0.208	0.000	0.012
A-22-00	A-22-DWF-8/A-22-C-24-D	SSFR_7011	GR	0.149	0.134	0.015	0.000	0.000
A-22-00	A-22-DWF-8/A-22-C-24-A	SSFR_7012	GR	0.148	0.000	0.148	0.000	0.000
A-22-00	A-22-DWF-5/A-22-C-7-B	SSFR_7013	GR	0.926	0.004	0.920	0.000	0.002
A-22-00	A-22-DWF-5/A-22-C-10	SSFR_7014	GR	0.237	0.000	0.000	0.000	0.237
A-22-00	A-22-DWF-5/A-22-C-7-A	SSFR_7015	GR	0.920	0.001	0.911	0.000	0.008
A-22-00	A-22-DWF-5/A-22-C-10	SSFR_7016	GR	0.126	0.000	0.126	0.000	0.000
A-22-00	A-22-DWF-5/A-22-C-7-A	SSFR_7017	GR	0.422	0.422	0.000	0.000	0.000
A-22-00	A-22-DWF-5/A-22-C-7-A	SSFR_7018	GR	0.217	0.216	0.000	0.000	0.001
A-22-00	A-22-DWF-9/A-22-C-28-B	SSFR_7019	GR	0.164	0.161	0.000	0.000	0.003
A-22-00	A-22-DWF-7/A-22-C-21-B	SSFR_7020	GR	0.117	0.117	0.000	0.000	0.000
A-22-00	A-22-DWF-8/A-22-C-18-B	SSFR_7021	GR	0.138	0.000	0.138	0.000	0.000
A-22-00	A-22-DWF-7/A-22-C-12	SSFR_7022	GR	0.219	0.000	0.000	0.000	0.219
A-22-00	A-22-DWF-7/A-22-C-22-C	SSFR_7023	GR	0.257	0.257	0.000	0.000	0.000
A-22-00	A-22-DWF-7/A-22-C-22-C	SSFR_7024	GR	0.131	0.131	0.000	0.000	0.000
A-22-00	A-22-DWF-7/A-22-C-22-C	SSFR_7025	GR	0.121	0.121	0.000	0.000	0.000
A-22-00	A-22-DWF-9/A-22-C-28-B	SSFR_7026	GR	0.365	0.010	0.000	0.000	0.355
A-22-00	A-22-DWF-5/A-22-C-7-A	SSFR_7027	GR	0.267	0.267	0.000	0.000	0.000
A-22-00	A-22-DWF-8/A-22-C-24-B	SSFR_7028	GR	0.116	0.116	0.000	0.000	0.000
A-22-00	A-22-DWF-8/A-22-C-24-C	SSFR_7029	GR	0.143	0.018	0.000	0.000	0.125
A-22-00	A-22-DWF-8/A-22-C-24-D	SSFR_7030	GR	0.319	0.317	0.000	0.000	0.002
A-22-00	A-22-DWF-8/A-22-C-18-A	SSFR_7031	GR	0.495	0.006	0.000	0.000	0.489
A-22-00	A-22-DWF-8/A-22-C-24-D	SSFR_7032	GR	0.350	0.350	0.000	0.000	0.000
A-22-00	A-22-DWF-6/A-22-C-17	SSFR_7033	GR	2.162	0.000	2.147	0.000	0.015
A-22-00	A-22-DWF-8/A-22-C-18-B	SSFR_7034	GR	0.125	0.125	0.000	0.000	0.000
A-22-00	A-22-DWF-9/A-22-C-28-A	SSFR_7035	GR	0.577	0.006	0.000	0.000	0.571
A-22-00	A-22-DWF-6/A-22-C-16-B	SSFR_7036	GR	0.128	0.128	0.000	0.000	0.000
A-22-00	A-22-DWF-8/A-22-C-19-A	SSFR_7037	GR	0.242	0.099	0.000	0.000	0.143

ALCOSAN POC	Model Subcatchment	Concept Comm / Inst Project UID	BMP Type	Concept Municipal Project Area (acres)	Taxable (acres)	Exempt (acres)	Provisionally Exempt (acres)	Public ROW (acres)
A-22-00	A-22-DWF-6/A-22-C-15-A	SSFR_7038	GR	0.130	0.129	0.000	0.000	0.001
A-22-00	A-22-DWF-8/A-22-C-24-A	SSFR_7039	GR	0.320	0.320	0.000	0.000	0.000
A-22-00	A-22-DWF-5/A-22-C-7-B	SSFR_7040	GR	0.232	0.007	0.000	0.000	0.225
A-22-00	A-22-DWF-8/A-22-C-18-C	SSFR_7041	GR	0.212	0.212	0.000	0.000	0.000
A-22-00	A-22-DWF-8/A-22-C-18-A	SSFR_7042	GR	0.239	0.231	0.000	0.000	0.008
A-22-00	A-22-DWF-7/A-22-C-11-A	SSFR_7043	GR	0.747	0.002	0.000	0.000	0.745
A-22-00	A-22-DWF-12/A-22-C-23-A	SSFR_7044	GR	0.168	0.000	0.168	0.000	0.000
A-22-00	A-22-DWF-8/A-22-C-18-A	SSFR_7045	GR	0.276	0.019	0.257	0.000	0.000
A-22-00	A-22-DWF-6/A-22-C-16-A	SSFR_7046	GR	0.536	0.368	0.017	0.000	0.151
A-22-00	A-22-DWF-7/A-22-C-11-B	SSFR_7047	GR	0.412	0.412	0.000	0.000	0.000
A-22-00	A-22-DWF-7/A-22-C-11-B	SSFR_7048	GR	0.929	0.000	0.929	0.000	0.000
A-22-00	A-22-DWF-2/A-22-C-2	SSFR_7049	GR	0.614	0.004	0.000	0.000	0.610
A-22-00	A-22-DWF-8/A-22-C-19-A	SSFR_7050	GR	1.126	1.126	0.000	0.000	0.000
A-22-00	A-22-DWF-8/A-22-C-18-D	SSFR_7051	GR	0.235	0.000	0.235	0.000	0.000
A-22-00	A-22-DWF-8/A-22-C-24-A	SSFR_7052	GR	0.208	0.201	0.000	0.000	0.007
A-22-00	A-22-DWF-3/A-22-C-3	SSFR_7053	GR	0.234	0.011	0.000	0.000	0.223
A-22-00	A-22-DWF-8/A-22-C-24-A	SSFR_7054	GR	0.296	0.006	0.000	0.000	0.290
A-22-00	A-22-DWF-8/A-22-C-24-A	SSFR_7055	GR	0.238	0.238	0.000	0.000	0.000
A-22-00	A-22-DWF-6/A-22-C-17	SSFR_7056	GR	0.118	0.000	0.118	0.000	0.000
A-22-00	A-22-DWF-7/A-22-C-11-B	SSFR_7057	GR	0.262	0.000	0.000	0.000	0.262
A-22-00	A-22-DWF-5/A-22-C-7-A	SSFR_7058	GR	0.156	0.000	0.000	0.000	0.156
A-22-00	A-22-DWF-7/A-22-C-11-C	SSFR_7059	GR	0.117	0.008	0.000	0.000	0.109
A-22-00	A-22-DWF-9/A-22-C-28-C	SSFR_7060	GR	0.146	0.146	0.000	0.000	0.000
A-22-00	A-22-DWF-5/A-22-C-7-B	SSFR_7061	GR	0.314	0.000	0.000	0.000	0.314
A-22-00	A-22-DWF-5/A-22-C-7-A	SSFR_7062	GR	0.297	0.285	0.000	0.000	0.012
A-22-00	A-22-DWF-5/A-22-C-7-A	SSFR_7063	GR	0.260	0.260	0.000	0.000	0.000
A-22-00	A-22-DWF-8/A-22-C-18-A	SSFR_7064	GR	3.490	0.000	3.490	0.000	0.000
A-22-00	A-22-DWF-5/A-22-C-10	SSFR_7065	GR	0.140	0.140	0.000	0.000	0.000
A-22-00	A-22-DWF-9/A-22-C-28-B	SSFR_7066	GR	0.168	0.000	0.168	0.000	0.000
A-22-00	A-22-DWF-9/A-22-C-28-B	SSFR_7067	GR	0.169	0.000	0.169	0.000	0.000

ALCOSAN POC	Model Subcatchment	Concept Comm / Inst Project UID	BMP Type	Concept Municipal Project Area (acres)	Taxable (acres)	Exempt (acres)	Provisionally Exempt (acres)	Public ROW (acres)
A-22-00	A-22-DWF-5/A-22-C-7-B	SSFR_7068	GR	0.275	0.261	0.000	0.000	0.014
A-22-00	A-22-DWF-11/A-22-C-27	SSFR_7069	GR	0.147	0.004	0.000	0.000	0.143
A-22-00	A-22-DWF-12/A-22-C-23-A	SSFR_7070	GR	0.174	0.158	0.000	0.000	0.016
A-22-00	A-22-DWF-12/A-22-C-23-A	SSFR_7071	GR	0.152	0.098	0.000	0.000	0.054
A-22-00	A-22-DWF-7/A-22-C-9	SSFR_7072	GR	0.162	0.162	0.000	0.000	0.000
A-22-00	A-22-DWF-5/A-22-C-7-B	SSFR_7073	GR	0.457	0.431	0.000	0.000	0.026
A-22-00	A-22-DWF-5/A-22-C-7-B	SSFR_7074	GR	0.323	0.119	0.000	0.000	0.204
A-22-00	A-22-DWF-11/A-22-C-27	SSFR_7075	GR	0.213	0.211	0.000	0.000	0.002
A-22-00	A-22-DWF-8/A-22-C-24-A	SSFR_7076	GR	0.166	0.000	0.166	0.000	0.000
A-22-00	A-22-DWF-11/A-22-C-27	SSFR_7077	GR	0.275	0.252	0.000	0.000	0.023
A-22-00	A-22-DWF-11/A-22-C-27	SSFR_7078	GR	0.287	0.064	0.000	0.000	0.223
A-22-00	A-22-DWF-6/A-22-C-16-B	SSFR_7079	GR	0.414	0.006	0.402	0.000	0.006
A-22-00	A-22-DWF-8/A-22-C-24-A	SSFR_7080	GR	0.168	0.168	0.000	0.000	0.000
A-22-00	A-22-DWF-8/A-22-C-24-A	SSFR_7081	GR	0.298	0.000	0.017	0.000	0.281
A-22-00	A-22-DWF-6/A-22-C-15-B	SSFR_7082	GR	0.133	0.013	0.000	0.000	0.120
A-22-00	A-22-DWF-12/A-22-C-23-B	SSFR_7083	GR	0.644	0.000	0.644	0.000	0.000
A-22-00	A-22-DWF-5/A-22-C-7-A	SSFR_7084	GR	0.889	0.003	0.000	0.000	0.886
A-22-00	A-22-DWF-12/A-22-C-23-A	SSFR_7085	GR	0.174	0.000	0.000	0.000	0.174
A-22-00	A-22-DWF-5/A-22-C-10	SSFR_7086	GR	0.800	0.736	0.000	0.000	0.064
A-22-00	A-22-DWF-5/A-22-C-7-A	SSFR_7087	GR	0.243	0.005	0.000	0.000	0.238
A-22-00	A-22-DWF-7/A-22-C-21-B	SSFR_7088	GR	0.118	0.118	0.000	0.000	0.000
A-22-00	A-22-DWF-12/A-22-C-23-B	SSFR_7089	GR	0.155	0.155	0.000	0.000	0.000
A-22-00	A-22-DWF-5/A-22-C-7-A	SSFR_7090	GR	0.212	0.199	0.000	0.000	0.013
A-22-00	A-22-DWF-7/A-22-C-11-C	SSFR_7091	GR	0.553	0.005	0.000	0.000	0.548
A-22-00	A-22-DWF-12/A-22-C-23-A	SSFR_7092	GR	0.293	0.192	0.000	0.000	0.101
A-22-00	A-22-DWF-5/A-22-C-7-B	SSFR_7093	GR	0.189	0.018	0.000	0.000	0.171
A-22-00	A-22-DWF-7/A-22-C-22-B	SSFR_7094	GR	0.140	0.000	0.140	0.000	0.000
A-22-00	A-22-DWF-5/A-22-C-7-A	SSFR_7095	GR	0.121	0.121	0.000	0.000	0.000
A-22-00	A-22-DWF-12/A-22-C-23-A	SSFR_7096	GR	0.263	0.000	0.263	0.000	0.000
A-22-00	A-22-DWF-5/A-22-C-7-A	SSFR_7097	GR	0.212	0.204	0.000	0.000	0.008

ALCOSAN POC	Model Subcatchment	Concept Comm / Inst Project UID	BMP Type	Concept Municipal Project Area (acres)	Taxable (acres)	Exempt (acres)	Provisionally Exempt (acres)	Public ROW (acres)
A-22-00	A-22-DWF-8/A-22-C-19-A	SSFR_7098	GR	0.172	0.172	0.000	0.000	0.000
A-22-00	A-22-DWF-5/A-22-C-10	SSFR_7099	GR	0.291	0.287	0.000	0.000	0.004
A-22-00	A-22-DWF-5/A-22-C-7-B	SSFR_7100	GR	0.292	0.155	0.000	0.000	0.137
A-22-00	A-22-DWF-6/A-22-C-17	SSFR_7101	GR	0.309	0.179	0.000	0.000	0.130
A-22-00	A-22-DWF-8/A-22-C-19-A	SSFR_7102	GR	0.182	0.176	0.000	0.000	0.006
A-22-00	A-22-DWF-1/A-22-C-1-B	SSFR_7103	GR	0.181	0.181	0.000	0.000	0.000
A-22-00	A-22-DWF-8/A-22-C-18-B	SSFR_7104	GR	0.377	0.376	0.000	0.000	0.001
A-22-00	A-22-DWF-8/A-22-C-24-D	SSFR_7105	GR	0.602	0.593	0.000	0.000	0.009
A-22-00	A-22-DWF-8/A-22-C-18-A	SSFR_7106	GR	0.180	0.000	0.000	0.000	0.180
A-22-00	A-22-DWF-8/A-22-C-24-A	SSFR_7107	GR	0.190	0.178	0.012	0.000	0.000
A-22-00	A-22-DWF-10/A-22-C-29-C	SSFR_7108	GR	0.274	0.000	0.272	0.000	0.002
A-22-00	A-22-DWF-9/A-22-C-28-A	SSFR_7109	GR	0.730	0.706	0.000	0.000	0.024
A-22-00	A-22-DWF-8/A-22-C-19-A	SSFR_7110	GR	0.925	0.230	0.014	0.000	0.681
A-22-00	A-22-DWF-8/A-22-C-24-C	SSFR_7111	GR	0.249	0.249	0.000	0.000	0.000
A-22-00	A-22-DWF-11/A-22-C-27	SSFR_7112	GR	1.221	0.000	0.034	0.000	1.187
A-22-00	A-22-DWF-8/A-22-C-24-A	SSFR_7113	GR	0.235	0.003	0.217	0.000	0.015
A-22-00	A-22-DWF-10/A-22-C-29-C	SSFR_7114	GR	0.178	0.011	0.000	0.000	0.167
A-22-00	A-22-DWF-9/A-22-C-28-A	SSFR_7115	GR	0.191	0.176	0.000	0.000	0.015
A-22-00	A-22-DWF-9/A-22-C-28-A	SSFR_7116	GR	0.432	0.000	0.000	0.000	0.432
A-22-00	A-22-DWF-2/A-22-C-2	SSFR_7117	GR	0.337	0.337	0.000	0.000	0.000
A-22-00	A-22-DWF-12/A-22-C-23-A	SSFR_7118	GR	0.150	0.133	0.000	0.000	0.017
A-22-00	A-22-DWF-7/A-22-C-12	SSFR_7119	GR	0.389	0.000	0.020	0.000	0.369
A-22-00	A-22-DWF-5/A-22-C-7-B	SSFR_7120	GR	0.139	0.136	0.000	0.000	0.003
A-22-00	A-22-DWF-7/A-22-C-9	SSFR_7121	GR	0.263	0.263	0.000	0.000	0.000
A-22-00	A-22-DWF-5/A-22-C-6-A	SSFR_7122	GR	0.354	0.068	0.000	0.000	0.286
A-22-00	A-22-DWF-9/A-22-C-28-C	SSFR_7123	GR	0.116	0.116	0.000	0.000	0.000
A-22-00	A-22-DWF-7/A-22-C-22-B	SSFR_7124	GR	0.195	0.013	0.013	0.000	0.169
A-22-00	A-22-DWF-8/A-22-C-24-A	SSFR_7125	GR	0.492	0.459	0.000	0.000	0.033
A-22-00	A-22-DWF-12/A-22-C-23-B	SSFR_7126	GR	0.282	0.282	0.000	0.000	0.000
A-22-00	A-22-DWF-12/A-22-C-23-A	SSFR_7127	GR	0.117	0.117	0.000	0.000	0.000

ALCOSAN POC	Model Subcatchment	Concept Comm / Inst Project UID	BMP Type	Concept Municipal Project Area (acres)	Taxable (acres)	Exempt (acres)	Provisionally Exempt (acres)	Public ROW (acres)
A-22-00	A-22-DWF-5/A-22-C-7-A	SSFR_7128	GR	0.153	0.153	0.000	0.000	0.000
A-22-00	A-22-DWF-5/A-22-C-7-A	SSFR_7129	GR	0.166	0.013	0.000	0.000	0.153
A-22-00	A-22-DWF-12/A-22-C-23-A	SSFR_7130	GR	0.262	0.008	0.000	0.000	0.254
A-22-00	A-22-DWF-9/A-22-C-28-C	SSFR_7131	GR	0.158	0.019	0.000	0.000	0.139
A-22-00	A-22-DWF-7/A-22-C-11-A	SSFR_7132	GR	0.904	0.904	0.000	0.000	0.000
A-22-00	A-22-DWF-5/A-22-C-7-B	SSFR_7133	GR	0.468	0.455	0.000	0.000	0.013
A-22-00	A-22-DWF-7/A-22-C-9	SSFR_7134	GR	0.180	0.180	0.000	0.000	0.000
A-22-00	A-22-DWF-7/A-22-C-9	SSFR_7135	GR	0.212	0.212	0.000	0.000	0.000
A-22-00	A-22-DWF-9/A-22-C-28-B	SSFR_7136	GR	0.121	0.121	0.000	0.000	0.000
A-22-00	A-22-DWF-8/A-22-C-18-A	SSFR_7137	GR	0.421	0.415	0.006	0.000	0.000
A-22-00	A-22-DWF-6/A-22-C-15-C	SSFR_7138	GR	0.164	0.163	0.000	0.000	0.001
A-22-00	A-22-DWF-5/A-22-C-10	SSFR_7139	GR	0.175	0.171	0.000	0.000	0.004
A-22-00	A-22-DWF-8/A-22-C-19-A	SSFR_7140	GR	0.466	0.455	0.000	0.000	0.011
A-22-00	A-22-DWF-8/A-22-C-19-A	SSFR_7141	GR	0.160	0.158	0.000	0.000	0.002
A-22-00	A-22-DWF-5/A-22-C-7-B	SSFR_7142	GR	0.291	0.275	0.000	0.000	0.016
A-22-00	A-22-DWF-8/A-22-C-24-A	SSFR_7143	GR	0.179	0.179	0.000	0.000	0.000
A-22-00	A-22-DWF-11/A-22-C-27	SSFR_7144	GR	0.205	0.004	0.000	0.000	0.201
A-22-00	A-22-DWF-8/A-22-C-24-A	SSFR_7145	GR	0.426	0.426	0.000	0.000	0.000
A-22-00	A-22-DWF-10/A-22-C-29-C	SSFR_7146	GR	0.257	0.252	0.001	0.000	0.004
A-22-00	A-22-DWF-9/A-22-C-28-A	SSFR_7147	GR	0.219	0.204	0.000	0.000	0.015
A-22-00	A-22-DWF-8/A-22-C-24-C	SSFR_7148	GR	0.211	0.188	0.000	0.000	0.023
A-22-00	A-22-DWF-6/A-22-C-16-B	SSFR_7149	GR	0.127	0.127	0.000	0.000	0.000
A-22-00	A-22-DWF-8/A-22-C-24-C	SSFR_7150	GR	0.134	0.134	0.000	0.000	0.000
A-22-00	A-22-DWF-8/A-22-C-24-A	SSFR_7151	GR	0.225	0.000	0.000	0.027	0.198
A-22-00	A-22-DWF-8/A-22-C-18-C	SSFR_7152	GR	0.132	0.083	0.000	0.000	0.049
A-22-00	A-22-DWF-8/A-22-C-24-A	SSFR_7153	GR	1.325	0.000	1.325	0.000	0.000
A-22-00	A-22-DWF-5/A-22-C-7-A	SSFR_7154	GR	0.154	0.154	0.000	0.000	0.000
A-22-00	A-22-DWF-11/A-22-C-27	SSFR_7155	GR	0.157	0.147	0.000	0.000	0.010
A-22-00	A-22-DWF-8/A-22-C-19-A	SSFR_7156	GR	0.344	0.334	0.000	0.000	0.010
A-22-00	A-22-DWF-9/A-22-C-28-C	SSFR_7157	GR	0.168	0.168	0.000	0.000	0.000

ALCOSAN POC	Model Subcatchment	Concept Comm / Inst Project UID	BMP Type	Concept Municipal Project Area (acres)	Taxable (acres)	Exempt (acres)	Provisionally Exempt (acres)	Public ROW (acres)
A-22-00	A-22-DWF-9/A-22-C-28-B	SSFR_7158	GR	0.137	0.137	0.000	0.000	0.000
A-22-00	A-22-DWF-12/A-22-C-23-A	SSFR_7159	GR	0.154	0.007	0.000	0.000	0.147
A-22-00	A-22-DWF-7/A-22-C-22-A	SSFR_7160	GR	0.368	0.340	0.000	0.000	0.028
A-22-00	A-22-DWF-12/A-22-C-23-B	SSFR_7161	GR	0.204	0.204	0.000	0.000	0.000
A-22-00	A-22-DWF-5/A-22-C-7-A	SSFR_7162	GR	0.152	0.000	0.152	0.000	0.000
A-22-00	A-22-DWF-7/A-22-C-11-B	SSFR_7163	GR	0.269	0.269	0.000	0.000	0.000
A-22-00	A-22-DWF-7/A-22-C-12	SSFR_7164	GR	0.248	0.000	0.000	0.000	0.248
A-22-00	A-22-DWF-5/A-22-C-7-A	SSFR_7165	GR	0.119	0.119	0.000	0.000	0.000
A-22-00	A-22-DWF-5/A-22-C-7-A	SSFR_7166	GR	0.151	0.151	0.000	0.000	0.000
A-22-00	A-22-DWF-7/A-22-C-11-A	SSFR_7167	GR	0.368	0.368	0.000	0.000	0.000
A-22-00	A-22-DWF-12/A-22-C-23-A	SSFR_7168	GR	0.152	0.145	0.000	0.000	0.007
A-22-00	A-22-DWF-12/A-22-C-23-A	SSFR_7169	GR	0.127	0.112	0.000	0.000	0.015
A-22-00	A-22-DWF-7/A-22-C-9	SSFR_7170	GR	0.179	0.168	0.000	0.000	0.011
A-22-00	A-22-DWF-11/A-22-C-27	SSFR_7171	GR	0.192	0.003	0.000	0.000	0.189
A-22-00	A-22-DWF-5/A-22-C-6-A	SSFR_7172	GR	0.310	0.310	0.000	0.000	0.000
A-22-00	A-22-DWF-12/A-22-C-23-A	SSFR_7173	GR	0.115	0.115	0.000	0.000	0.000
A-22-00	A-22-DWF-7/A-22-C-9	SSFR_7174	GR	0.269	0.269	0.000	0.000	0.000
A-22-00	A-22-DWF-12/A-22-C-23-A	SSFR_7175	GR	0.458	0.000	0.458	0.000	0.000
A-22-00	A-22-DWF-5/A-22-C-6-B	SSFR_7176	GR	0.671	0.002	0.005	0.000	0.664
A-22-00	A-22-DWF-8/A-22-C-19-A	SSFR_7177	GR	0.148	0.147	0.000	0.000	0.001
A-22-00	A-22-DWF-6/A-22-C-17	SSFR_7178	GR	0.310	0.010	0.300	0.000	0.000
A-22-00	A-22-DWF-12/A-22-C-23-A	SSFR_7179	GR	0.115	0.092	0.000	0.000	0.023
A-22-00	A-22-DWF-8/A-22-C-24-D	SSFR_7180	GR	0.164	0.004	0.002	0.000	0.158
A-22-00	A-22-DWF-8/A-22-C-24-D	SSFR_7181	GR	0.296	0.004	0.000	0.000	0.292
A-22-00	A-22-DWF-1/A-22-C-1-A	SSFR_7182	GR	0.804	0.804	0.000	0.000	0.000
A-22-00	A-22-DWF-8/A-22-C-24-C	SSFR_7183	GR	0.166	0.000	0.166	0.000	0.000
A-22-00	A-22-DWF-8/A-22-C-24-C	SSFR_7184	GR	0.155	0.133	0.000	0.000	0.022
A-22-00	A-22-DWF-8/A-22-C-24-C	SSFR_7185	GR	0.203	0.007	0.016	0.000	0.180
A-22-00	A-22-DWF-8/A-22-C-24-A	SSFR_7186	GR	0.184	0.184	0.000	0.000	0.000
A-22-00	A-22-DWF-8/A-22-C-24-C	SSFR_7187	GR	0.524	0.000	0.524	0.000	0.000

ALCOSAN POC	Model Subcatchment	Concept Comm / Inst Project UID	BMP Type	Concept Municipal Project Area (acres)	Taxable (acres)	Exempt (acres)	Provisionally Exempt (acres)	Public ROW (acres)
A-22-00	A-22-DWF-12/A-22-C-23-B	SSFR_7188	GR	0.163	0.163	0.000	0.000	0.000
A-22-00	A-22-DWF-12/A-22-C-23-A	SSFR_7189	GR	0.329	0.329	0.000	0.000	0.000
A-22-00	A-22-DWF-5/A-22-C-6-B	SSFR_7190	GR	0.395	0.395	0.000	0.000	0.000
A-22-00	A-22-DWF-7/A-22-C-22-B	SSFR_7191	GR	0.287	0.287	0.000	0.000	0.000
A-22-00	A-22-DWF-6/A-22-C-31	SSFR_7192	GR	0.359	0.307	0.051	0.000	0.001
A-22-00	A-22-DWF-8/A-22-C-24-C	SSFR_7193	GR	0.165	0.150	0.000	0.000	0.015
A-22-00	A-22-DWF-12/A-22-C-23-B	SSFR_7194	GR	0.291	0.000	0.138	0.000	0.153
A-22-00	A-22-DWF-7/A-22-C-22-C	SSFR_7195	GR	0.373	0.373	0.000	0.000	0.000
A-22-00	A-22-DWF-5/A-22-C-7-A	SSFR_7196	GR	0.748	0.451	0.000	0.000	0.297
A-22-00	A-22-DWF-9/A-22-C-28-C	SSFR_7197	GR	0.144	0.144	0.000	0.000	0.000
A-22-00	A-22-DWF-5/A-22-C-7-A	SSFR_7198	GR	0.133	0.133	0.000	0.000	0.000
A-22-00	A-22-DWF-9/A-22-C-28-C	SSFR_7199	GR	0.180	0.180	0.000	0.000	0.000
A-22-00	A-22-DWF-3/A-22-C-3	SSFR_7200	GR	0.202	0.000	0.202	0.000	0.000
A-22-00	A-22-DWF-8/A-22-C-24-A	SSFR_7201	GR	0.324	0.324	0.000	0.000	0.000
A-22-00	A-22-DWF-9/A-22-C-28-B	SSFR_7202	GR	0.223	0.105	0.000	0.000	0.118
A-22-00	A-22-DWF-9/A-22-C-28-B	SSFR_7203	GR	0.622	0.012	0.000	0.000	0.610
A-22-00	A-22-DWF-9/A-22-C-28-B	SSFR_7204	GR	0.123	0.123	0.000	0.000	0.000
A-22-00	A-22-DWF-5/A-22-C-7-A	SSFR_7205	GR	0.200	0.000	0.000	0.000	0.200
A-22-00	A-22-DWF-10/A-22-C-29-B	SSFR_7206	GR	0.237	0.009	0.000	0.000	0.228
A-22-00	A-22-DWF-7/A-22-C-9	SSFR_7207	GR	0.995	0.773	0.000	0.000	0.222
A-22-00	A-22-DWF-5/A-22-C-7-B	SSFR_7208	GR	1.103	0.758	0.000	0.000	0.345
A-22-00	A-22-DWF-12/A-22-C-23-A	SSFR_7209	GR	0.154	0.154	0.000	0.000	0.000
A-22-00	A-22-DWF-4/A-22-C-4	SSFR_7210	GR	0.137	0.092	0.000	0.000	0.045
A-22-00	A-22-DWF-6/A-22-C-17	SSFR_7211	GR	0.299	0.299	0.000	0.000	0.000
A-22-00	A-22-DWF-11/A-22-C-27	SSFR_7212	GR	0.234	0.216	0.000	0.000	0.018
A-22-00	A-22-DWF-9/A-22-C-28-A	SSFR_7213	GR	0.650	0.640	0.000	0.000	0.010
A-22-00	A-22-DWF-9/A-22-C-28-B	SSFR_7214	GR	0.205	0.002	0.000	0.000	0.203
A-22-00	A-22-DWF-8/A-22-C-19-A	SSFR_7215	GR	0.278	0.278	0.000	0.000	0.000
A-22-00	A-22-DWF-12/A-22-C-23-A	SSFR_7216	GR	0.159	0.016	0.000	0.000	0.143
A-22-00	A-22-DWF-8/A-22-C-24-D	SSFR_7217	GR	0.730	0.712	0.000	0.000	0.018

ALCOSAN POC	Model Subcatchment	Concept Comm / Inst Project UID	BMP Type	Concept Municipal Project Area (acres)	Taxable (acres)	Exempt (acres)	Provisionally Exempt (acres)	Public ROW (acres)
A-22-00	A-22-DWF-5/A-22-C-10	SSFR_7218	GR	0.185	0.178	0.000	0.000	0.007
A-22-00	A-22-DWF-6/A-22-C-14	SSFR_7219	GR	0.122	0.002	0.000	0.000	0.120
A-22-00	A-22-DWF-4/A-22-C-4	SSFR_7220	GR	0.385	0.385	0.000	0.000	0.000
A-22-00	A-22-DWF-1/A-22-C-1-A	SSFR_7221	GR	0.511	0.003	0.000	0.000	0.508
A-22-00	A-22-DWF-6/A-22-C-16-B	SSFR_7222	GR	0.863	0.014	0.000	0.000	0.849
A-22-00	A-22-DWF-8/A-22-C-24-A	SSFR_7223	GR	0.368	0.000	0.000	0.000	0.368
A-22-00	A-22-DWF-8/A-22-C-24-A	SSFR_7224	GR	0.419	0.146	0.000	0.000	0.273
A-22-00	A-22-DWF-6/A-22-C-16-B	SSFR_7225	GR	0.129	0.129	0.000	0.000	0.000
A-22-00	A-22-DWF-8/A-22-C-24-C	SSFR_7226	GR	0.154	0.147	0.000	0.000	0.007
A-22-00	A-22-DWF-8/A-22-C-24-A	SSFR_7227	GR	0.560	0.000	0.557	0.000	0.003
A-22-00	A-22-DWF-8/A-22-C-24-A	SSFR_7228	GR	0.115	0.115	0.000	0.000	0.000
A-22-00	A-22-DWF-8/A-22-C-18-C	SSFR_7229	GR	0.242	0.000	0.242	0.000	0.000
A-22-00	A-22-DWF-8/A-22-C-24-B	SSFR_7230	GR	0.161	0.158	0.000	0.000	0.003
A-22-00	A-22-DWF-5/A-22-C-7-B	SSFR_7231	GR	0.143	0.143	0.000	0.000	0.000
A-22-00	A-22-DWF-7/A-22-C-11-A	SSFR_7232	GR	0.272	0.272	0.000	0.000	0.000
A-22-00	A-22-DWF-5/A-22-C-6-A	SSFR_7233	GR	0.170	0.160	0.000	0.000	0.010
A-22-00	A-22-DWF-5/A-22-C-7-B	SSFR_7234	GR	0.403	0.014	0.000	0.000	0.389
A-22-00	A-22-DWF-11/A-22-C-27	SSFR_7235	GR	0.429	0.414	0.000	0.000	0.015
A-22-00	A-22-DWF-8/A-22-C-24-D	SSFR_7236	GR	1.000	0.472	0.164	0.000	0.364
A-22-00	A-22-DWF-12/A-22-C-23-B	SSFR_7237	GR	0.184	0.184	0.000	0.000	0.000
A-22-00	A-22-DWF-7/A-22-C-11-C	SSFR_7238	GR	0.120	0.005	0.000	0.000	0.115
A-22-00	A-22-DWF-5/A-22-C-7-B	SSFR_7239	GR	0.289	0.289	0.000	0.000	0.000
A-22-00	A-22-DWF-5/A-22-C-7-A	SSFR_7240	GR	0.247	0.244	0.001	0.000	0.002
A-22-00	A-22-DWF-5/A-22-C-7-A	SSFR_7241	GR	0.352	0.005	0.000	0.000	0.347
A-22-00	A-22-DWF-12/A-22-C-23-A	SSFR_7242	GR	0.188	0.179	0.000	0.000	0.009
A-22-00	A-22-DWF-5/A-22-C-7-A	SSFR_7243	GR	0.162	0.159	0.000	0.000	0.003
A-22-00	A-22-DWF-9/A-22-C-28-C	SSFR_7244	GR	0.118	0.118	0.000	0.000	0.000
A-22-00	A-22-DWF-7/A-22-C-11-B	SSFR_7245	GR	0.251	0.000	0.251	0.000	0.000
A-22-00	A-22-DWF-12/A-22-C-23-A	SSFR_7246	GR	0.218	0.178	0.000	0.000	0.040
A-22-00	A-22-DWF-9/A-22-C-28-B	SSFR_7247	GR	0.131	0.131	0.000	0.000	0.000

ALCOSAN POC	Model Subcatchment	Concept Comm / Inst Project UID	BMP Type	Concept Municipal Project Area (acres)	Taxable (acres)	Exempt (acres)	Provisionally Exempt (acres)	Public ROW (acres)
A-22-00	A-22-DWF-5/A-22-C-7-A	SSFR_7248	GR	0.332	0.326	0.000	0.000	0.006
A-22-00	A-22-DWF-10/A-22-C-29-A	SSFR_7249	GR	0.199	0.053	0.000	0.000	0.146
A-22-00	A-22-DWF-11/A-22-C-27	SSFR_7250	GR	0.390	0.000	0.390	0.000	0.000
A-22-00	A-22-DWF-4/A-22-C-4	SSFR_7251	GR	0.139	0.125	0.000	0.000	0.014
A-22-00	A-22-DWF-11/A-22-C-27	SSFR_7252	GR	0.122	0.004	0.000	0.000	0.118
A-22-00	A-22-DWF-6/A-22-C-14	SSFR_7253	GR	0.125	0.006	0.000	0.000	0.119
A-22-00	A-22-DWF-6/A-22-C-16-B	SSFR_7254	GR	0.129	0.129	0.000	0.000	0.000
A-22-00	A-22-DWF-8/A-22-C-24-A	SSFR_7255	GR	0.435	0.432	0.000	0.000	0.003
A-22-00	A-22-DWF-8/A-22-C-24-A	SSFR_7256	GR	0.333	0.329	0.000	0.000	0.004
A-22-00	A-22-DWF-8/A-22-C-24-A	SSFR_7257	GR	0.572	0.572	0.000	0.000	0.000
A-22-00	A-22-DWF-8/A-22-C-24-B	SSFR_7258	GR	0.289	0.159	0.000	0.000	0.130
A-22-00	A-22-DWF-5/A-22-C-7-A	SSFR_7259	GR	0.344	0.000	0.344	0.000	0.000
A-22-00	A-22-DWF-12/A-22-C-23-A	SSFR_7260	GR	0.155	0.007	0.000	0.000	0.148
A-22-00	A-22-DWF-7/A-22-C-22-A	SSFR_7261	GR	0.176	0.000	0.170	0.000	0.006
A-22-00	A-22-DWF-12/A-22-C-23-A	SSFR_7262	GR	0.129	0.019	0.000	0.000	0.110
A-22-00	A-22-DWF-7/A-22-C-22-C	SSFR_7263	GR	0.147	0.147	0.000	0.000	0.000
A-22-00	A-22-DWF-7/A-22-C-12	SSFR_7264	GR	0.121	0.121	0.000	0.000	0.000
A-22-00	A-22-DWF-5/A-22-C-7-A	SSFR_7265	GR	0.202	0.003	0.000	0.000	0.199
A-22-00	A-22-DWF-5/A-22-C-7-A	SSFR_7266	GR	0.193	0.193	0.000	0.000	0.000
A-22-00	A-22-DWF-5/A-22-C-7-A	SSFR_7267	GR	0.194	0.003	0.000	0.000	0.191
A-22-00	A-22-DWF-9/A-22-C-28-C	SSFR_7268	GR	0.135	0.000	0.135	0.000	0.000
A-22-00	A-22-DWF-5/A-22-C-7-A	SSFR_7269	GR	0.215	0.011	0.000	0.000	0.204
A-22-00	A-22-DWF-12/A-22-C-23-A	SSFR_7270	GR	0.520	0.520	0.000	0.000	0.000
A-22-00	A-22-DWF-12/A-22-C-23-A	SSFR_7271	GR	0.143	0.143	0.000	0.000	0.000
A-22-00	A-22-DWF-5/A-22-C-7-B	SSFR_7272	GR	0.204	0.204	0.000	0.000	0.000
A-22-00	A-22-DWF-12/A-22-C-23-A	SSFR_7273	GR	0.120	0.010	0.000	0.000	0.110
A-22-00	A-22-DWF-7/A-22-C-9	SSFR_7274	GR	0.116	0.116	0.000	0.000	0.000
A-22-00	A-22-DWF-8/A-22-C-19-A	SSFR_7275	GR	0.149	0.145	0.000	0.000	0.004
A-22-00	A-22-DWF-11/A-22-C-27	SSFR_7276	GR	0.141	0.015	0.000	0.000	0.126
A-22-00	A-22-DWF-11/A-22-C-27	SSFR_7277	GR	0.323	0.321	0.000	0.000	0.002

ALCOSAN POC	Model Subcatchment	Concept Comm / Inst Project UID	BMP Type	Concept Municipal Project Area (acres)	Taxable (acres)	Exempt (acres)	Provisionally Exempt (acres)	Public ROW (acres)
A-22-00	A-22-DWF-9/A-22-C-28-A	SSFR_7278	GR	0.243	0.234	0.000	0.000	0.009
A-22-00	A-22-DWF-6/A-22-C-17	SSFR_7279	GR	0.234	0.004	0.000	0.000	0.230
A-22-00	A-22-DWF-12/A-22-C-23-A	SSFR_7280	GR	0.142	0.013	0.000	0.000	0.129
A-22-00	A-22-DWF-6/A-22-C-16-A	SSFR_7281	GR	0.202	0.115	0.026	0.000	0.061
A-22-00	A-22-DWF-3/A-22-C-3	SSFR_7282	GR	0.160	0.151	0.000	0.000	0.009
A-22-00	A-22-DWF-5/A-22-C-7-B	SSFR_7283	GR	0.521	0.512	0.000	0.000	0.009
A-22-00	A-22-DWF-8/A-22-C-24-D	SSFR_7284	GR	0.237	0.000	0.230	0.000	0.007
A-22-00	A-22-DWF-9/A-22-C-28-A	SSFR_7285	GR	0.144	0.001	0.000	0.000	0.143
A-22-00	A-22-DWF-8/A-22-C-24-A	SSFR_7286	GR	0.165	0.165	0.000	0.000	0.000
A-22-00	A-22-DWF-8/A-22-C-24-B	SSFR_7287	GR	0.125	0.116	0.000	0.000	0.009
A-22-00	A-22-DWF-1/A-22-C-1-A	SSFR_7288	GR	0.413	0.411	0.000	0.000	0.002
A-22-00	A-22-DWF-1/A-22-C-1-A	SSFR_7289	GR	0.258	0.249	0.000	0.000	0.009
A-22-00	A-22-DWF-2/A-22-C-2	SSFR_7290	GR	0.331	0.315	0.000	0.000	0.016
A-22-00	A-22-DWF-2/A-22-C-2	SSFR_7291	GR	0.344	0.339	0.000	0.000	0.005
A-22-00	A-22-DWF-1/A-22-C-1-B	SSFR_7292	GR	0.335	0.134	0.000	0.000	0.201
A-22-00	A-22-DWF-5/A-22-C-7-B	SSFR_7293	GR	0.415	0.004	0.411	0.000	0.000
A-22-00	A-22-DWF-5/A-22-C-7-B	SSFR_7294	GR	0.222	0.175	0.000	0.000	0.047
A-22-00	A-22-DWF-5/A-22-C-7-A	SSFR_7295	GR	0.502	0.485	0.000	0.000	0.017
A-22-00	A-22-DWF-5/A-22-C-7-A	SSFR_7296	GR	0.297	0.003	0.029	0.000	0.265
A-22-00	A-22-DWF-5/A-22-C-7-A	SSFR_7297	GR	0.346	0.176	0.000	0.000	0.170
A-22-00	A-22-DWF-5/A-22-C-7-A	SSFR_7298	GR	0.260	0.015	0.243	0.000	0.002
A-22-00	A-22-DWF-6/A-22-C-15-A	SSFR_7299	GR	0.453	0.000	0.431	0.000	0.022
A-22-00	A-22-DWF-6/A-22-C-17	SSFR_7300	GR	1.409	0.929	0.019	0.000	0.461
A-22-00	A-22-DWF-8/A-22-C-19-A	SSFR_7301	GR	0.209	0.003	0.203	0.000	0.003
A-22-00	A-22-DWF-8/A-22-C-18-A	SSFR_7302	GR	0.794	0.015	0.000	0.000	0.779
A-22-00	A-22-DWF-6/A-22-C-16-B	SSFR_7303	GR	0.206	0.014	0.000	0.000	0.192
A-22-00	A-22-DWF-6/A-22-C-16-B	SSFR_7304	GR	0.134	0.124	0.000	0.000	0.010
A-22-00	A-22-DWF-6/A-22-C-16-B	SSFR_7305	GR	0.141	0.140	0.000	0.000	0.001
A-22-00	A-22-DWF-8/A-22-C-24-B	SSFR_7306	GR	0.377	0.000	0.132	0.000	0.245
A-22-00	A-22-DWF-8/A-22-C-24-C	SSFR_7307	GR	0.210	0.000	0.210	0.000	0.000

ALCOSAN POC	Model Subcatchment	Concept Comm / Inst Project UID	BMP Type	Concept Municipal Project Area (acres)	Taxable (acres)	Exempt (acres)	Provisionally Exempt (acres)	Public ROW (acres)
A-22-00	A-22-DWF-8/A-22-C-24-D	SSFR_7308	GR	0.393	0.384	0.000	0.000	0.009
A-22-00	A-22-DWF-9/A-22-C-28-A	SSFR_7309	GR	0.158	0.149	0.000	0.000	0.009
A-22-00	A-22-DWF-8/A-22-C-24-A	SSFR_7310	GR	0.153	0.153	0.000	0.000	0.000
A-22-00	A-22-DWF-10/A-22-C-29-C	SSFR_7311	GR	0.299	0.278	0.000	0.000	0.021
A-22-00	A-22-DWF-10/A-22-C-29-C	SSFR_7312	GR	0.552	0.539	0.003	0.000	0.010
A-22-00	A-22-DWF-8/A-22-C-24-A	SSFR_7313	GR	0.267	0.244	0.000	0.000	0.023
A-22-00	A-22-DWF-8/A-22-C-24-A	SSFR_7314	GR	0.173	0.162	0.000	0.000	0.011
A-22-00	A-22-DWF-8/A-22-C-24-A	SSFR_7315	GR	0.116	0.106	0.000	0.000	0.010
A-22-00	A-22-DWF-8/A-22-C-18-B	SSFR_8001	SRPP	0.445	0.000	0.000	0.000	0.445
A-22-00	A-22-DWF-5/A-22-C-6-A	SSFR_8002	SRPP	1.140	0.000	0.000	0.000	1.140
A-22-00	A-22-DWF-5/A-22-C-7-B	SSFR_8003	SRPP	0.510	0.000	0.000	0.000	0.510
A-22-00	A-22-DWF-5/A-22-C-7-B	SSFR_8004	SRPP	0.719	0.000	0.000	0.000	0.719
A-22-00	A-22-DWF-5/A-22-C-7-B	SSFR_8005	SRPP	0.478	0.000	0.000	0.000	0.478
A-22-00	A-22-DWF-5/A-22-C-7-B	SSFR_8006	SRPP	0.300	0.000	0.000	0.000	0.300
A-22-00	A-22-DWF-5/A-22-C-7-B	SSFR_8007	SRPP	0.495	0.000	0.000	0.000	0.495
A-22-00	A-22-DWF-5/A-22-C-7-A	SSFR_8008	SRPP	1.989	0.000	0.000	0.000	1.989
A-22-00	A-22-DWF-11/A-22-C-27	SSFR_8009	SRPP	0.724	0.000	0.000	0.000	0.724
A-22-00	A-22-DWF-9/A-22-C-28-B	SSFR_8010	SRPP	0.361	0.001	0.001	0.000	0.359
A-22-00	A-22-DWF-5/A-22-C-7-A	SSFR_8011	SRPP	0.584	0.000	0.000	0.000	0.584
A-22-00	A-22-DWF-5/A-22-C-7-A	SSFR_8012	SRPP	1.406	0.000	0.000	0.000	1.406
A-22-00	A-22-DWF-11/A-22-C-27	SSFR_8013	SRPP	1.522	0.000	0.000	0.000	1.522
A-22-00	A-22-DWF-4/A-22-C-4	SSFR_8014	SRPP	0.533	0.000	0.004	0.000	0.529
A-22-00	A-22-DWF-4/A-22-C-4	SSFR_8015	SRPP	0.461	0.000	0.011	0.000	0.450
A-22-00	A-22-DWF-5/A-22-C-10	SSFR_8016	SRPP	0.476	0.000	0.000	0.000	0.476
A-22-00	A-22-DWF-9/A-22-C-28-C	SSFR_8017	SRPP	2.213	0.006	0.000	0.000	2.207
A-22-00	A-22-DWF-12/A-22-C-23-A	SSFR_8018	SRPP	0.387	0.000	0.000	0.000	0.387
A-22-00	A-22-DWF-12/A-22-C-23-A	SSFR_8019	SRPP	0.281	0.001	0.000	0.000	0.280
A-22-00	A-22-DWF-12/A-22-C-23-A	SSFR_8020	SRPP	0.689	0.000	0.000	0.000	0.689
A-22-00	A-22-DWF-12/A-22-C-23-A	SSFR_8021	SRPP	0.212	0.000	0.000	0.000	0.212
A-22-00	A-22-DWF-8/A-22-C-19-B	SSFR_8022	SRPP	0.293	0.000	0.000	0.000	0.293

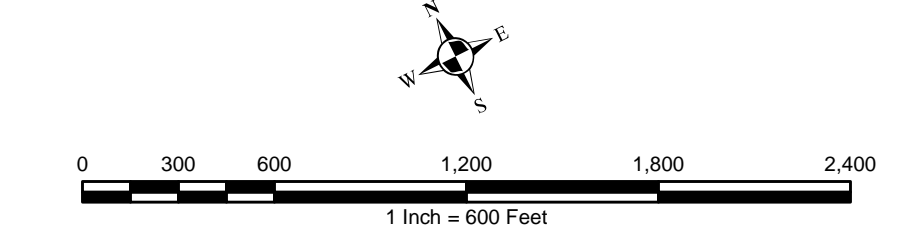
ALCOSAN POC	Model Subcatchment	Concept Comm / Inst Project UID	BMP Type	Concept Municipal Project Area (acres)	Taxable (acres)	Exempt (acres)	Provisionally Exempt (acres)	Public ROW (acres)
A-22-00	A-22-DWF-8/A-22-C-19-B	SSFR_8023	SRPP	0.453	0.000	0.000	0.000	0.453
A-22-00	A-22-DWF-12/A-22-C-23-A	SSFR_8024	SRPP	0.645	0.000	0.000	0.000	0.645
A-22-00	A-22-DWF-12/A-22-C-23-A	SSFR_8025	SRPP	0.413	0.000	0.000	0.000	0.413
A-22-00	A-22-DWF-8/A-22-C-24-A	SSFR_8026	SRPP	1.025	0.000	0.018	0.000	1.007
A-22-00	A-22-DWF-8/A-22-C-24-A	SSFR_8027	SRPP	3.557	0.000	0.018	0.000	3.539
A-22-00	A-22-DWF-8/A-22-C-24-A	SSFR_8028	SRPP	1.189	0.000	0.000	0.000	1.189
A-22-00	A-22-DWF-8/A-22-C-24-B	SSFR_8029	SRPP	0.472	0.000	0.000	0.000	0.472
A-22-00	A-22-DWF-8/A-22-C-24-C	SSFR_8030	SRPP	2.062	0.003	0.001	0.000	2.058
A-22-00	A-22-DWF-5/A-22-C-7-B	SSFR_8031	SRPP	0.849	0.000	0.000	0.000	0.849
A-22-00	A-22-DWF-5/A-22-C-7-A	SSFR_8032	SRPP	0.793	0.000	0.000	0.000	0.793
A-22-00	A-22-DWF-11/A-22-C-27	SSFR_8033	SRPP	0.837	0.000	0.095	0.000	0.742
A-22-00	A-22-DWF-4/A-22-C-4	SSFR_8034	SRPP	1.057	0.000	0.008	0.000	1.049
A-22-00	A-22-DWF-9/A-22-C-28-B	SSFR_8035	SRPP	1.216	0.000	0.000	0.000	1.216
A-22-00	A-22-DWF-9/A-22-C-28-B	SSFR_8036	SRPP	0.855	0.000	0.000	0.000	0.855
A-22-00	A-22-DWF-12/A-22-C-23-A	SSFR_8037	SRPP	0.599	0.000	0.000	0.000	0.599
A-22-00	A-22-DWF-12/A-22-C-23-A	SSFR_8038	SRPP	0.790	0.000	0.000	0.000	0.790
A-22-00	A-22-DWF-12/A-22-C-23-A	SSFR_8039	SRPP	0.624	0.000	0.000	0.000	0.624
A-22-00	A-22-DWF-12/A-22-C-23-A	SSFR_8040	SRPP	0.413	0.000	0.000	0.000	0.413
A-22-00	A-22-DWF-12/A-22-C-23-A	SSFR_8041	SRPP	0.496	0.004	0.000	0.000	0.492
A-22-00	A-22-DWF-8/A-22-C-24-A	SSFR_8042	SRPP	0.579	0.000	0.000	0.000	0.579
A-22-00	A-22-DWF-8/A-22-C-24-C	SSFR_8043	SRPP	0.926	0.000	0.000	0.000	0.926
A-22-00	A-22-DWF-8/A-22-C-24-C	SSFR_8044	SRPP	2.246	0.000	0.000	0.000	2.246
A-22-00	A-22-DWF-8/A-22-C-24-C	SSFR_8045	SRPP	0.868	0.000	0.000	0.000	0.868
A-22-00	A-22-DWF-8/A-22-C-18-C	SSFR_8046	SRPP	0.972	0.000	0.000	0.000	0.972
A-22-00	A-22-DWF-8/A-22-C-18-C	SSFR_8046	SRPP	0.679	0.000	0.000	0.000	0.679
A-22-00	A-22-DWF-6/A-22-C-15-C	SSFR_8047	SRPP	0.736	0.000	0.000	0.000	0.736
A-22-00	A-22-DWF-6/A-22-C-16-B	SSFR_8048	SRPP	1.104	0.000	0.000	0.000	1.104
A-22-00	A-22-DWF-6/A-22-C-16-B	SSFR_8049	SRPP	0.855	0.000	0.000	0.000	0.855
A-22-00	A-22-DWF-6/A-22-C-16-B	SSFR_8050	SRPP	0.904	0.000	0.000	0.000	0.904
A-22-00	A-22-DWF-6/A-22-C-16-B	SSFR_8051	SRPP	0.907	0.002	0.000	0.000	0.905

ALCOSAN POC	Model Subcatchment	Concept Comm / Inst Project UID	BMP Type	Concept Municipal Project Area (acres)	Taxable (acres)	Exempt (acres)	Provisionally Exempt (acres)	Public ROW (acres)
A-22-00	A-22-DWF-6/A-22-C-16-B	SSFR_8052	SRPP	1.029	0.000	0.000	0.000	1.029
A-22-00	A-22-DWF-6/A-22-C-17	SSFR_8053	SRPP	0.687	0.000	0.000	0.000	0.687
A-22-00	A-22-DWF-6/A-22-C-17	SSFR_8054	SRPP	0.829	0.000	0.000	0.000	0.829
A-22-00	A-22-DWF-6/A-22-C-17	SSFR_8055	SRPP	1.034	0.000	0.000	0.000	1.034
A-22-00	A-22-DWF-6/A-22-C-15-B	SSFR_8055	SRPP	1.091	0.000	0.000	0.000	1.091
A-22-00	A-22-DWF-6/A-22-C-15-A	SSFR_8056	SRPP	0.124	0.000	0.000	0.000	0.124
A-22-00	A-22-DWF-13/A-22-C-25	SSFR_8057	SRPP	0.047	0.000	0.000	0.000	0.047
A-22-00	A-22-DWF-13/A-22-C-25	SSFR_8058	SRPP	0.046	0.000	0.000	0.000	0.046
A-22-00	A-22-DWF-1/A-22-C-1-A	SSFR_8059	SRPP	0.360	0.000	0.000	0.000	0.360
A-22-00	A-22-DWF-1/A-22-C-1-B	SSFR_8060	SRPP	0.737	0.000	0.000	0.000	0.737
A-22-00	A-22-DWF-1/A-22-C-1-B	SSFR_8061	SRPP	1.078	0.000	0.004	0.000	1.074
A-22-00	A-22-DWF-1/A-22-C-1-B	SSFR_8062	SRPP	2.110	0.001	0.006	0.000	2.103
A-22-00	A-22-DWF-10/A-22-C-29-C	SSFR_8063	SRPP	0.129	0.003	0.000	0.000	0.126
A-22-00	A-22-DWF-1/A-22-C-1-B	SSFR_8063	SRPP	0.961	0.003	0.000	0.000	0.958
A-22-00	A-22-DWF-1/A-22-C-1-B	SSFR_8064	SRPP	0.714	0.001	0.000	0.000	0.713
A-22-00	A-22-DWF-9/A-22-C-28-A	SSFR_8065	SRPP	0.151	0.000	0.000	0.000	0.151
A-22-00	A-22-DWF-9/A-22-C-28-A	SSFR_8066	SRPP	2.839	0.000	0.000	0.000	2.839
A-22-00	A-22-DWF-10/A-22-C-29-A	SSFR_8067	SRPP	0.313	0.000	0.000	0.000	0.313
A-22-00	A-22-DWF-7/A-22-C-11-B	SSFR_8068	SRPP	0.648	0.000	0.000	0.000	0.648
A-22-00	A-22-DWF-7/A-22-C-11-B	SSFR_8069	SRPP	0.758	0.000	0.000	0.000	0.758
A-22-00	A-22-DWF-7/A-22-C-12	SSFR_8070	SRPP	0.739	0.000	0.000	0.000	0.739
A-22-00	A-22-DWF-7/A-22-C-21-B	SSFR_8071	SRPP	0.385	0.000	0.000	0.000	0.385
A-22-00	A-22-DWF-7/A-22-C-21-A	SSFR_8072	SRPP	0.369	0.000	0.000	0.000	0.369
A-22-00	A-22-DWF-7/A-22-C-11-C	SSFR_8074	SRPP	0.081	0.000	0.000	0.000	0.081
A-22-00	A-22-DWF-7/A-22-C-22-B	SSFR_8075	SRPP	0.354	0.000	0.000	0.000	0.354
A-22-00	A-22-DWF-7/A-22-C-9	SSFR_8076	SRPP	1.011	0.000	0.000	0.000	1.011
A-22-00	A-22-DWF-7/A-22-C-12	SSFR_8077	SRPP	0.277	0.000	0.000	0.000	0.277
A-22-00	A-22-DWF-7/A-22-C-21-A	SSFR_8078	SRPP	1.099	0.000	0.000	0.000	1.099
A-22-00	A-22-DWF-7/A-22-C-22-B	SSFR_8079	SRPP	0.670	0.000	0.000	0.000	0.670
A-22-00	A-22-DWF-7/A-22-C-21-A	SSFR_8080	SRPP	0.065	0.000	0.000	0.000	0.065

ALCOSAN POC	Model Subcatchment	Concept Comm / Inst Project UID	BMP Type	Concept Municipal Project Area (acres)	Taxable (acres)	Exempt (acres)	Provisionally Exempt (acres)	Public ROW (acres)
A-22-00	A-22-DWF-6/A-22-C-14	SSFR_8080	SRPP	0.088	0.000	0.000	0.000	0.088
A-22-00	A-22-DWF-8/A-22-C-18-A	SSFR_8081	SRPP	0.548	0.000	0.000	0.000	0.548
A-22-00	A-22-DWF-8/A-22-C-18-A	SSFR_8082	SRPP	1.141	0.000	0.000	0.000	1.141
A-22-00	A-22-DWF-8/A-22-C-24-A	SSFR_8083	SRPP	1.435	0.000	0.000	0.000	1.435
A-22-00	A-22-DWF-9/A-22-C-28-A	SSFR_8084	SRPP	0.133	0.000	0.000	0.000	0.133
A-22-00	A-22-DWF-7/A-22-C-11-B	SSFR_8085	SRPP	1.140	0.000	0.000	0.000	1.140
A-22-00	A-22-DWF-7/A-22-C-11-B	SSFR_8086	SRPP	0.870	0.000	0.000	0.000	0.870
A-22-00	A-22-DWF-7/A-22-C-11-B	SSFR_8087	SRPP	0.337	0.000	0.000	0.000	0.337
A-22-00	A-22-DWF-11/A-22-C-27	SSFR_8088	SRPP	0.467	0.002	0.000	0.000	0.465
A-22-00	A-22-DWF-8/A-22-C-24-A	SSFR_8089	SRPP	0.887	0.000	0.000	0.000	0.887
A-22-00	A-22-DWF-5/A-22-C-7-A	SSFR_8090	SRPP	0.572	0.009	0.000	0.000	0.563
A-22-00	A-22-DWF-8/A-22-C-24-D	SSFR_8091	SRPP	0.874	0.000	0.001	0.000	0.873
A-22-00	A-22-DWF-8/A-22-C-24-D	SSFR_8092	SRPP	0.950	0.000	0.001	0.000	0.949
A-22-00	A-22-DWF-8/A-22-C-19-A	SSFR_8093	SRPP	0.638	0.000	0.001	0.000	0.637



- ★ ALCOSAN Structures
- ALCOSAN Shallow-Cut Interceptor
- ALCOSAN Deep Tunnel Interceptor
- Special Case
- Concept Commercial / Institutional Permeable Pavement Projects
- Concept Green Roof Projects
- State Roads
- Combined Sewer Subcatchment
- Municipal Boundaries



ALCOSAN GSI Project
 Shadyside / Friendship (A-22)
 Concept Commercial / Institutional,
 Green Roof, and Special Case GSI Projects