

5.2 Study Area 2 – Homestead Area

These findings apply to ALCOSAN Point of Connection M-45, which includes combined sewer systems in Homestead Borough and Munhall Borough.

Homestead - BMP GIS Features

The SUSTAIN BMP siting tool analysis resulted in identification of a total of 2,130 BMP GIS Features covering 187 acres, which consisted of the following:

Table 5.2-1 - TOTAL SUSTAIN BMP Features Output

SUSTAIN BMP Feature Type	Number of Features	Area of BMP Features (Acres)
Permeable Pavement	336	60
Bioretention	717	40
Infiltration Basin/Trenches	234	10
Vegetated Filter Strips	192	55
Grass Swales	635	22
Constructed Wetlands	16	< 1

Locations of all identified BMP GIS features are presented on the SUSTAIN BMP Features Figure.

Homestead - Concept Municipal GSI Projects

Based on the BMP features, 149 concept Municipal GSI Projects were identified covering 24 total acres with a corresponding drainage area delineation of 97 total acres and consisted of the following:

Table 5.2-2 - Summary of Identified Concept Municipal GSI Projects

Concept GSI Technology	Number of Projects	GSI Project Area (Acres)	Project Drainage Area (Acres)
Permeable Pavement	35	17	73
Bioretention	101	3	14
Infiltration Basin/Trenches	9	< 1	2
Vegetated Filter Strips	3	3	8
Grass Swales	0	0	0
Constructed Wetlands	1	< 1	< 1

Project statistics including ALCOSAN POC, model subcatchment, BMP type, project area, area of project inside and outside of the public right-of-way, tributary drainage area, and tributary impervious drainage area are provided in the Concept Municipal Projects Table. Locations of all identified Concept Municipal GSI projects are presented in the Concept Municipal GSI Projects Figure (1) and the corresponding delineated tributary drainage areas are presented by BMP in the Individual Project Drainage Area Figures (5).

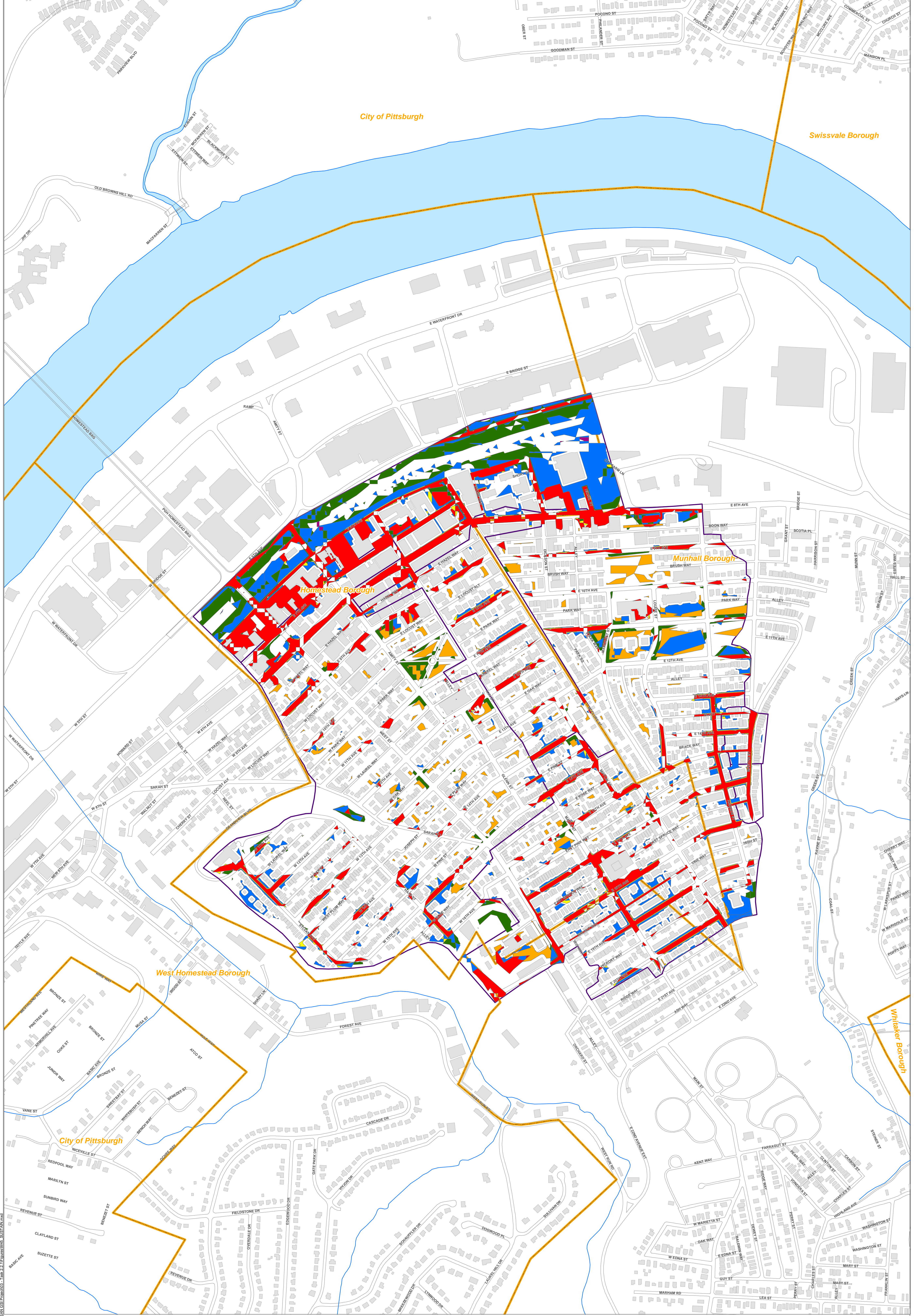
Homestead - Concept Commercial/Institutional and Special Case GSI Projects

Based on the BMP features, 93 concept Commercial/Institutional and Special Case GSI Projects were identified covering 26 total acres and consisted of the following:

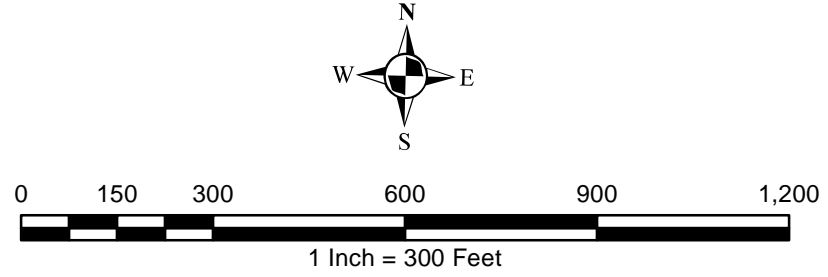
Table 5.2-3 - Summary of Identified Concept Commercial/Institutional and Special Case GSI Projects

Concept GSI Technology or Special Case Project Category	Number of Projects	GSI Project Area (Acres)
Commercial/Institutional Permeable Pavement	32	8
Commercial/Institutional Green Roofs	52	12
State Route Permeable Pavement	9	7
Busway Permeable Pavement	0	0
Busway Bioretention	0	0

Project statistics including ALCOSAN POC, model subcatchment, BMP type, project area, area of project taxable, exempt, provisionally exempt and in the public right-of-way are provided in Concept Commercial / Institutional GSI Projects Table. Locations of all identified Concept Commercial / Institutional GSI projects are presented in the Concept Commercial / Institutional GSI Projects Figure (1).



- Permeable Pavement
- Vegetated Filter Strips
- Combined Sewer Subcatchment
- Bioretention Basin
- Grass Swales
- Municipal Boundaries
- Infiltration Basin / Trench
- Constructed Wetlands



ALCOSAN GSI Project
M-45
SUSTAIN BMP Features

Path: I:\PROJECTS\ALCOSAN_GSI\ALCOSAN_GSI_PDF\03_Tier_2_1\Figures\45_SUSTAIN.mxd

Homestead Concept Municipal Projects: Individual Drainage Areas

March 30, 2014

Revised October, 7, 2014

*Note: The drainage area presented in this table is representative of the individual drainage area tributary to each concept municipal project without any revisions to account for overlap, without engineering judgment revisions applied, and without the drainage areas being clipped to their corresponding model subcatchments.

ALCOSAN POC	Model Subcatchment	Concept Municipal Project UID	BMP Type	Concept Municipal Project Area (acres)	Public ROW or Parcel		Concept Municipal Project Individual Drainage Area (acres)*	Concept Municipal Project Individual Project Impervious Drainage Area (acres)*
					Area of Municipal Project in Public ROW (acres)	Area of Municipal Project outside of Public ROW (acres)		
M-45	M4500-MB-L-04_S1	HOME_1	PP	0.761	0.761	0.000	1.172	0.828
M-45	M4500-MB-L-04_S1	HOME_2	PP	0.221	0.221	0.000	0.475	0.377
M-45	M4500-MB-L-04_S2	HOME_4	PP	0.403	0.398	0.005	0.782	0.515
M-45	M4500-MB-L-04_S3	HOME_5	PP	0.582	0.570	0.012	1.812	1.079
M-45	M4500-MB-L-04_S1	HOME_6	PP	0.307	0.307	0.000	1.101	0.633
M-45	M4500-MB-L-04_S1	HOME_7	PP	0.149	0.149	0.000	0.256	0.186
M-45	M4500-IM-S-02_S1	HOME_8	PP	0.594	0.594	0.000	4.341	1.793
M-45	M4500-IM-S-02_S1	HOME_9	PP	0.386	0.386	0.000	4.180	1.841
M-45	M4500-IM-S-02_S1	HOME_10	PP	0.450	0.450	0.000	1.394	0.737
M-45	M4500-IM-S-02_S1	HOME_11	PP	0.583	0.574	0.009	2.002	0.955
M-45	M4500-MB-L-04_S1	HOME_12	PP	0.199	0.199	0.000	1.060	0.493
M-45	M4500-IM-S-03_S1	HOME_13	PP	0.410	0.410	0.000	1.643	0.756
M-45	M4500-IM-S-03_S1	HOME_14	PP	0.352	0.352	0.000	2.526	1.099
M-45	M4500-IM-S-03_S1	HOME_15	PP	0.443	0.443	0.000	1.186	0.651
M-45	M4500-IM-S-03_S1	HOME_16	PP	0.435	0.435	0.000	2.021	1.020
M-45	M4500-MB-L-04_S1	HOME_17	PP	0.224	0.224	0.000	1.126	0.688
M-45	M4500-MB-L-04_S1	HOME_18	PP	0.418	0.401	0.017	1.598	0.737
M-45	M4500-IM-S-02_S1	HOME_19	PP	0.335	0.335	0.000	4.049	1.786
M-45	M4500-MB-L-04_S1	HOME_21	PP	0.937	0.937	0.000	2.049	1.524
M-45	M4500-MB-L-04_S1	HOME_22	PP	0.855	0.855	0.000	2.209	1.364
M-45	M4500-IM-S-02_S1	HOME_23	PP	0.255	0.255	0.000	1.311	0.918
M-45	M4500-IM-S-02_S1	HOME_24	PP	0.352	0.314	0.038	2.570	1.869
M-45	M4500-MB-L-04_S1	HOME_25	PP	0.460	0.456	0.004	4.194	1.994
M-45	M4500-MB-L-04_S1	HOME_26	PP	0.418	0.418	0.000	0.938	0.591
M-45	M4500-IM-S-02_S1	HOME_27	PP	0.277	0.275	0.002	0.731	0.552
M-45	M4500-IM-S-02_S1	HOME_28	PP	0.802	0.802	0.000	4.176	3.133
M-45	M4500-POC-L-01_S1	HOME_29	PP	1.801	1.720	0.081	6.882	5.112
M-45	M4500-POC-L-01_S1	HOME_30	PP	0.363	0.363	0.000	1.392	0.803
M-45	M4500-POC-L-01_S1	HOME_31	PP	0.210	0.177	0.033	1.004	0.984
M-45	M4500-POC-L-01_S1	HOME_32	PP	0.099	0.094	0.005	0.946	0.642
M-45	M4500-IM-S-02_S1	HOME_33	PP	0.079	0.000	0.079	0.455	0.157
M-45	M4500-MB-L-04_S1	HOME_34	PP	1.167	1.122	0.045	4.891	2.405

ALCOSAN POC	Model Subcatchment	Concept Municipal Project UID	BMP Type	Concept Municipal Project Area (acres)	Public ROW or Parcel		Concept Municipal Project Individual Drainage Area (acres)*	Concept Municipal Project Individual Project Impervious Drainage Area (acres)*
					Area of Municipal Project in Public ROW (acres)	Area of Municipal Project outside of Public ROW (acres)		
M-45	M4500-MB-L-04_S1	HOME_35	PP	0.108	0.108	0.000	0.115	0.096
M-45	M4500-MB-L-04_S1	HOME_36	PP	1.718	1.714	0.004	5.356	2.974
M-45	M4500-IM-S-02_S1	HOME_37	PP	0.283	0.283	0.000	1.459	1.032
M-45	M4500-MB-L-04_S1	HOME_1003	BR	0.016	0.008	0.008	0.038	0.016
M-45	M4500-MB-L-04_S1	HOME_1004	BR	0.014	0.006	0.008	0.019	0.002
M-45	M4500-MB-L-04_S1	HOME_1007	BR	0.031	0.021	0.010	0.062	0.011
M-45	M4500-MB-L-04_S1	HOME_1008	BR	0.042	0.042	0.000	0.138	0.039
M-45	M4500-MB-L-04_S1	HOME_1009	BR	0.058	0.051	0.007	0.103	0.029
M-45	M4500-MB-L-04_S1	HOME_1010	BR	0.041	0.036	0.005	0.044	0.015
M-45	M4500-MB-L-04_S1	HOME_1011	BR	0.037	0.037	0.000	0.227	0.089
M-45	M4500-MB-L-04_S1	HOME_1012	BR	0.022	0.020	0.002	0.550	0.166
M-45	M4500-MB-L-04_S1	HOME_1013	BR	0.034	0.034	0.000	0.051	0.007
M-45	M4500-MB-L-04_S1	HOME_1014	BR	0.053	0.053	0.000	0.062	0.011
M-45	M4500-MB-L-04_S1	HOME_1017	BR	0.014	0.007	0.007	0.016	0.000
M-45	M4500-MB-L-04_S1	HOME_1021	BR	0.013	0.013	0.000	0.022	0.002
M-45	M4500-MB-L-04_S1	HOME_1022	BR	0.006	0.006	0.000	0.037	0.022
M-45	M4500-MB-L-04_S1	HOME_1024	BR	0.045	0.018	0.027	0.224	0.096
M-45	M4500-MB-L-04_S1	HOME_1025	BR	0.035	0.000	0.035	0.274	0.153
M-45	M4500-MB-L-04_S1	HOME_1026	BR	0.045	0.000	0.045	0.073	0.010
M-45	M4500-MB-L-04_S1	HOME_1031	BR	0.019	0.012	0.007	0.161	0.136
M-45	M4500-MB-L-04_S1	HOME_1035	BR	0.024	0.024	0.000	0.101	0.046
M-45	M4500-MB-L-04_S1	HOME_1038	BR	0.017	0.015	0.002	0.233	0.062
M-45	M4500-MB-L-04_S1	HOME_1039	BR	0.017	0.009	0.008	0.038	0.010
M-45	M4500-MB-L-04_S1	HOME_1040	BR	0.045	0.024	0.021	0.320	0.110
M-45	M4500-MB-L-04_S1	HOME_1042	BR	0.017	0.000	0.017	0.023	0.003
M-45	M4500-IM-S-02_S1	HOME_1044	BR	0.016	0.016	0.000	0.022	0.007
M-45	M4500-IM-S-02_S1	HOME_1050	BR	0.017	0.009	0.008	0.085	0.013
M-45	M4500-IM-S-02_S1	HOME_1051	BR	0.059	0.021	0.038	0.105	0.016
M-45	M4500-IM-S-02_S1	HOME_1052	BR	0.025	0.010	0.015	0.031	0.011
M-45	M4500-IM-S-02_S1	HOME_1053	BR	0.030	0.015	0.015	0.041	0.011
M-45	M4500-IM-S-02_S1	HOME_1055	BR	0.011	0.003	0.008	0.022	0.005
M-45	M4500-IM-S-02_S1	HOME_1057	BR	0.024	0.013	0.011	0.762	0.309
M-45	M4500-IM-S-02_S1	HOME_1059	BR	0.023	0.008	0.015	0.030	0.008
M-45	M4500-IM-S-02_S1	HOME_1060	BR	0.025	0.007	0.018	0.030	0.003
M-45	M4500-IM-S-02_S1	HOME_1062	BR	0.017	0.017	0.000	0.378	0.241
M-45	M4500-IM-S-02_S1	HOME_1067	BR	0.041	0.013	0.028	0.059	0.010
M-45	M4500-IM-S-02_S1	HOME_1068	BR	0.010	0.009	0.001	0.038	0.017
M-45	M4500-IM-S-02_S1	HOME_1069	BR	0.037	0.035	0.002	0.051	0.010

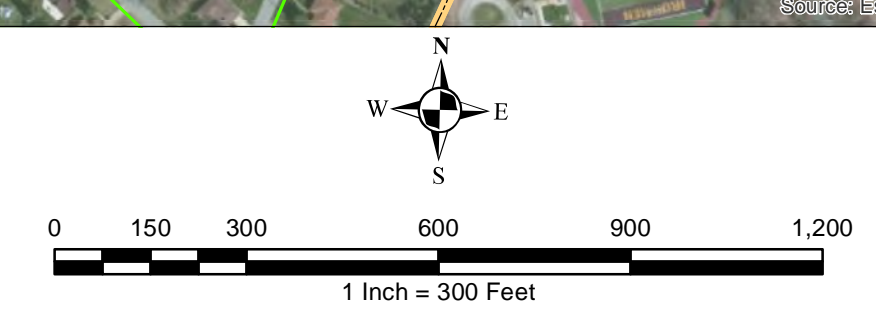
ALCOSAN POC	Model Subcatchment	Concept Municipal Project UID	BMP Type	Concept Municipal Project Area (acres)	Public ROW or Parcel		Concept Municipal Project Individual Drainage Area (acres)*	Concept Municipal Project Individual Project Impervious Drainage Area (acres)*
					Area of Municipal Project in Public ROW (acres)	Area of Municipal Project outside of Public ROW (acres)		
M-45	M4500-IM-S-02_S1	HOME_1071	BR	0.009	0.003	0.006	0.017	0.004
M-45	M4500-IM-S-02_S1	HOME_1072	BR	0.018	0.004	0.014	0.038	0.008
M-45	M4500-IM-S-02_S1	HOME_1073	BR	0.015	0.009	0.006	0.018	0.003
M-45	M4500-IM-S-02_S1	HOME_1074	BR	0.019	0.018	0.001	0.250	0.102
M-45	M4500-IM-S-02_S1	HOME_1075	BR	0.058	0.058	0.000	0.148	0.086
M-45	M4500-IM-S-02_S1	HOME_1076	BR	0.053	0.053	0.000	0.062	0.008
M-45	M4500-POC-L-01_S1	HOME_1077	BR	0.027	0.018	0.009	0.210	0.210
M-45	M4500-POC-L-01_S1	HOME_1082	BR	0.032	0.016	0.016	0.036	0.011
M-45	M4500-POC-L-01_S1	HOME_1084	BR	0.014	0.008	0.006	0.019	0.002
M-45	M4500-IM-S-03_S1	HOME_1085	BR	0.056	0.014	0.042	0.085	0.010
M-45	M4500-IM-S-02_S1	HOME_1086	BR	0.038	0.019	0.019	0.636	0.348
M-45	M4500-IM-S-03_S1	HOME_1089	BR	0.018	0.007	0.011	0.024	0.000
M-45	M4500-MB-L-04_S1	HOME_1091	BR	0.024	0.022	0.002	0.299	0.124
M-45	M4500-MB-L-04_S1	HOME_1093	BR	0.015	0.015	0.000	0.020	0.006
M-45	M4500-MB-L-04_S1	HOME_1094	BR	0.015	0.011	0.004	0.421	0.144
M-45	M4500-MB-L-04_S1	HOME_1095	BR	0.013	0.013	0.000	0.018	0.001
M-45	M4500-MB-L-04_S1	HOME_1101	BR	0.012	0.012	0.000	0.117	0.046
M-45	M4500-MB-L-04_S1	HOME_1106	BR	0.124	0.072	0.052	0.297	0.074
M-45	M4500-MB-L-04_S1	HOME_1114	BR	0.012	0.005	0.007	0.013	0.002
M-45	M4500-MB-L-04_S1	HOME_1115	BR	0.102	0.063	0.039	0.217	0.092
M-45	M4500-MB-L-04_S1	HOME_1117	BR	0.023	0.007	0.016	0.029	0.000
M-45	M4500-MB-L-04_S1	HOME_1119	BR	0.043	0.019	0.024	0.051	0.007
M-45	M4500-MB-L-04_S1	HOME_1120	BR	0.033	0.012	0.021	0.089	0.022
M-45	M4500-MB-L-04_S1	HOME_1121	BR	0.032	0.023	0.009	0.119	0.046
M-45	M4500-MB-L-04_S1	HOME_1123	BR	0.024	0.014	0.010	0.026	0.000
M-45	M4500-MB-L-04_S1	HOME_1124	BR	0.008	0.005	0.003	0.056	0.004
M-45	M4500-MB-L-04_S1	HOME_1125	BR	0.008	0.003	0.005	0.135	0.076
M-45	M4500-IM-S-03_S1	HOME_1126	BR	0.020	0.004	0.016	0.571	0.197
M-45	M4500-MB-L-04_S1	HOME_1127	BR	0.014	0.005	0.009	0.035	0.008
M-45	M4500-IM-S-03_S1	HOME_1128	BR	0.012	0.006	0.006	0.015	0.001
M-45	M4500-IM-S-03_S1	HOME_1129	BR	0.024	0.008	0.016	0.025	0.002
M-45	M4500-IM-S-03_S1	HOME_1130	BR	0.022	0.018	0.004	0.111	0.053
M-45	M4500-IM-S-03_S1	HOME_1131	BR	0.042	0.032	0.010	0.404	0.166
M-45	M4500-IM-S-03_S1	HOME_1132	BR	0.016	0.005	0.011	0.018	0.000
M-45	M4500-MB-L-04_S1	HOME_1134	BR	0.005	0.003	0.002	0.265	0.140
M-45	M4500-MB-L-04_S1	HOME_1135	BR	0.024	0.015	0.009	0.102	0.028
M-45	M4500-IM-S-02_S1	HOME_1141	BR	0.058	0.035	0.023	0.092	0.035
M-45	M4500-IM-S-02_S1	HOME_1142	BR	0.023	0.008	0.015	0.026	0.001

ALCOSAN POC	Model Subcatchment	Concept Municipal Project UID	BMP Type	Concept Municipal Project Area (acres)	Public ROW or Parcel		Concept Municipal Project Individual Drainage Area (acres)*	Concept Municipal Project Individual Project Impervious Drainage Area (acres)*
					Area of Municipal Project in Public ROW (acres)	Area of Municipal Project outside of Public ROW (acres)		
M-45	M4500-MB-L-04_S1	HOME_1143	BR	0.010	0.009	0.001	0.056	0.002
M-45	M4500-IM-S-02_S1	HOME_1144	BR	0.017	0.010	0.007	0.159	0.159
M-45	M4500-MB-L-04_S1	HOME_1145	BR	0.016	0.011	0.005	0.027	0.006
M-45	M4500-MB-L-04_S1	HOME_1146	BR	0.019	0.004	0.015	0.026	0.002
M-45	M4500-MB-L-04_S1	HOME_1147	BR	0.016	0.001	0.015	0.064	0.009
M-45	M4500-MB-L-04_S1	HOME_1148	BR	0.015	0.008	0.007	0.065	0.008
M-45	M4500-MB-L-04_S1	HOME_1149	BR	0.015	0.007	0.008	0.192	0.078
M-45	M4500-IM-S-03_S1	HOME_1150	BR	0.013	0.007	0.006	0.024	0.002
M-45	M4500-MB-L-04_S1	HOME_1151	BR	0.021	0.006	0.015	0.164	0.097
M-45	M4500-POC-L-01_S1	HOME_1152	BR	0.039	0.028	0.011	0.052	0.001
M-45	M4500-POC-L-01_S1	HOME_1153	BR	0.038	0.006	0.032	0.106	0.000
M-45	M4500-IM-S-03_S1	HOME_1154	BR	0.011	0.007	0.004	0.013	0.002
M-45	M4500-IM-S-03_S1	HOME_1155	BR	0.007	0.004	0.003	0.010	0.000
M-45	M4500-POC-L-01_S1	HOME_1156	BR	0.031	0.000	0.031	0.193	0.122
M-45	M4500-POC-L-01_S1	HOME_1157	BR	0.010	0.008	0.002	0.080	0.045
M-45	M4500-POC-L-01_S1	HOME_1158	BR	0.194	0.007	0.187	0.348	0.000
M-45	M4500-POC-L-01_S1	HOME_1159	BR	0.005	0.000	0.005	0.015	0.000
M-45	M4500-POC-L-01_S1	HOME_1160	BR	0.004	0.000	0.004	0.005	0.000
M-45	M4500-IM-S-02_S1	HOME_1161	BR	0.008	0.005	0.003	0.009	0.000
M-45	M4500-IM-S-02_S1	HOME_1162	BR	0.011	0.006	0.005	0.014	0.008
M-45	M4500-IM-S-02_S1	HOME_1163	BR	0.012	0.005	0.007	0.485	0.346
M-45	M4500-POC-L-01_S1	HOME_1164	BR	0.038	0.028	0.010	0.496	0.451
M-45	M4500-POC-L-01_S1	HOME_1165	BR	0.055	0.000	0.055	0.127	0.000
M-45	M4500-POC-L-01_S1	HOME_1166	BR	0.213	0.000	0.213	0.327	0.018
M-45	M4500-POC-L-01_S1	HOME_1167	BR	0.095	0.000	0.095	0.232	0.053
M-45	M4500-POC-L-01_S1	HOME_1168	BR	0.154	0.000	0.154	0.323	0.004
M-45	M4500-POC-L-01_S1	HOME_1169	BR	0.139	0.000	0.139	0.273	0.000
M-45	M4500-POC-L-01_S1	HOME_1170	BR	0.096	0.058	0.038	0.171	0.052
M-45	M4500-IM-S-02_S1	HOME_2001	IB	0.015	0.000	0.015	0.046	0.001
M-45	M4500-MB-L-04_S1	HOME_2002	IB	0.063	0.001	0.062	0.188	0.001
M-45	M4500-IM-S-02_S1	HOME_2003	IB	0.010	0.000	0.010	0.032	0.000
M-45	M4500-IM-S-02_S1	HOME_2004	IB	0.017	0.000	0.017	0.496	0.141
M-45	M4500-IM-S-02_S1	HOME_2007	IB	0.066	0.000	0.066	0.465	0.096
M-45	M4500-IM-S-02_S1	HOME_2008	IB	0.096	0.000	0.096	0.324	0.018
M-45	M4500-IM-S-02_S1	HOME_2009	IB	0.023	0.000	0.023	0.071	0.006
M-45	M4500-MB-L-04_S1	HOME_2010	IB	0.162	0.049	0.113	0.194	0.000
M-45	M4500-MB-L-04_S1	HOME_2011	IB	0.035	0.000	0.035	0.069	0.003
M-45	M4500-MB-L-04_S1	HOME_4001	VF	0.040	0.040	0.000	0.605	0.174

ALCOSAN POC	Model Subcatchment	Concept Municipal Project UID	BMP Type	Concept Municipal Project Area (acres)	Public ROW or Parcel		Concept Municipal Project Individual Drainage Area (acres)*	Concept Municipal Project Individual Project Impervious Drainage Area (acres)*
					Area of Municipal Project in Public ROW (acres)	Area of Municipal Project outside of Public ROW (acres)		
M-45	M4500-POC-L-01_S1	HOME_4002	VF	1.697	0.000	1.697	4.817	0.000
M-45	M4500-POC-L-01_S1	HOME_4003	VF	0.957	0.000	0.957	2.155	0.000
M-45	M4500-POC-L-01_S1	HOME_5001	CW	0.146	0.000	0.146	0.201	0.000



- ★ ALCOSAN Structures
- Shallow-Cut Interceptor
- Deep Tunnel Interceptor
- One Overall Manholes
- One Overall Sewerlines
- Bioretention Basin
- Infiltration Basin
- Permeable Pavement
- Vegetated Filter Strips
- Constructed Wetlands
- State Roads
- ▨ Access Limitations
- ▭ Combined Sewer Subcatchment
- ▭ Municipal Boundaries



ALCOSAN GSI Project
Homestead (M-45)
Concept Municipal GSI Projects

File: I:\PROJECTS\ALCOSAN GSI Project\03 - Task 2.11\Figures\M45_ConceptMunGSI.mxd
 Date: 11/15/2011 10:58:11 AM

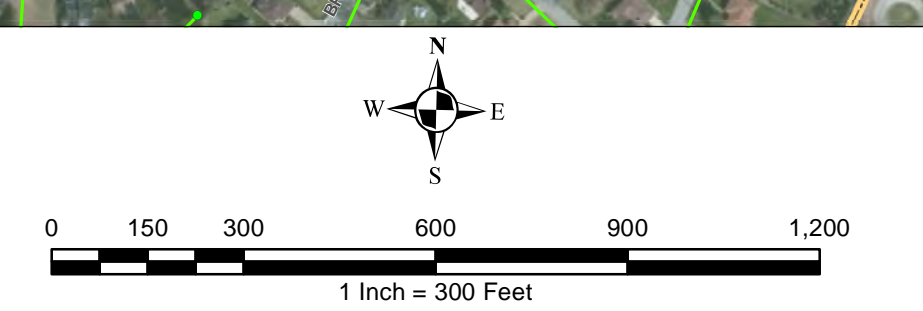
Source: ESRI, DeLorme, GeoEye, IGN, Aerotech, Earthstar, CNES, Airphoto, USDA, IGN, Esri, DigitalGlobe, GeoEye, AeroGRID, IGN, Esri, Swire, and other contributors.





* ALCOSAN Structures
 - Shallow-Cut Interceptor
 - Deep Tunnel Interceptor
 - One Overall Manholes
 - One Overall Sewerlines

Bioretention Municipal Projects
 Bioretention Drainage Areas
 State Roads
 Access Limitations
 Combined Sewer Subcatchment
 Municipal Boundaries



ALCOSAN GSI Project
Homestead (M-45)
Concept Municipal Bioretention GSI Projects
Individual Project Drainage Areas

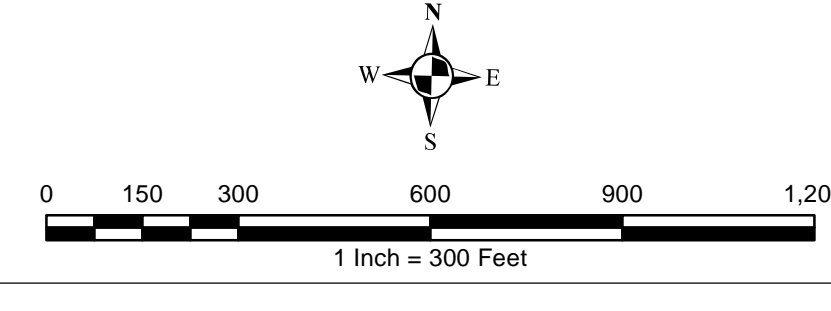
File: I:\P\RD\34346\46 ALCOSAN GSI Project\03 - Task 2.1.Figures\Homestead M45\2014 Revised Drainage Areas\Fig_BMP\Map5 Bioretention_IndividualDrainageAreas.mxd

Source: ESRI, DeLorme, GeoEye, IGN, GeoEye, Earthstar, CNES/Airbus DS, USDA, USGS, AeroGRID, IGN, Esri, Swire, and other contributors.



☆ ALCOSAN Structures
 - - - Shallow-Cut Interceptor
 - - - Deep Tunnel Interceptor
 • One Overall Manholes
 - - - One Overall Sewerlines

■ Infiltration Basin Municipal Projects
 ■ Infiltration Basin Drainage Areas
 ■ State Roads
 ■ Access Limitations
 ■ Combined Sewer Subcatchment
 ■ Municipal Boundaries



ALCOSAN GSI Project
Homestead (M-45)
Concept Municipal Infiltration Basin GSI Projects
Individual Project Drainage Areas

Path: I:\P\3\345\345 ALCOSAN GSI Project\03 - Task 2.1.F\Figures\Homestead M45\2014 Revised Drainage Areas\Fig_BMP\M45_IndividualDrainageArea.mxd

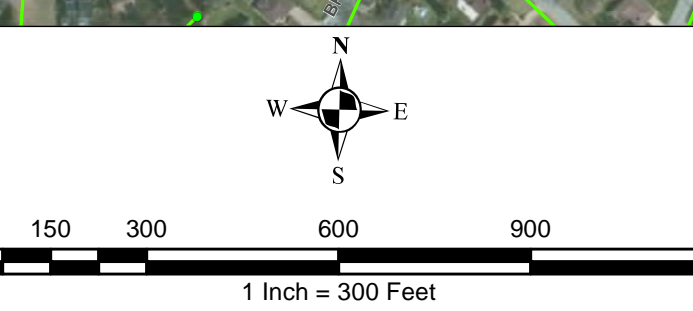
Source: ESRI, DeLorme, GeoEye, IGN, GeoEye, Earthstar, CNES/Airbus DS, USDA, USGS, AeroGRID, IGN, Esri, Swisstopo, and other GIS data providers



★ ALCOSAN Structures
 - - - Shallow-Cut Interceptor
 - - - Deep Tunnel Interceptor
 ● One Overall Manholes
 - - - One Overall Sewerlines

■ Vegetated Filter Strips Municipal Projects
 ■ Vegetated Filter Strips Drainage Areas
 ■ Access Limitations
 ■ Combined Sewer Subcatchment
 ■ Municipal Boundaries

■ State Roads



ALCOSAN GSI Project
Homestead (M-45)
Concept Municipal Vegetated Filter Strips GSI Projects
Individual Project Drainage Areas

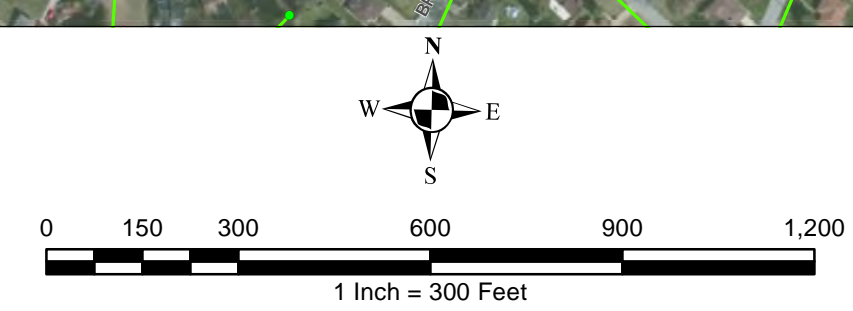
P:\GIS\ALCOSAN_GSI\ALCOSAN_GSI\Task 2.1.1\Figures\Homestead_M45\2014_Updated\Drainage_Areas\Map\ALCOSAN_GSI_Vegetated_Filter_Strips_Individual_Drainage_Areas.mxd

Source: Esri, DeLorme, GeoEye, USGS, AeroGRID, IGN, SCS, Swire, and DigitalGlobe. User: Community



File: I:\FRODO\345\45\ALCOSAN_GSI_Progect03 - Task 2.1\Figures\Homestead\M45\2014_Rev\Drainage_Areas\Fig_BMP\M45_ConstructedWetland_IndividualDrainageAreas.mxd
 Date: 11/25/2014 11:56:32 AM

- ★ ALCOSAN Structures
- Shallow-Cut Interceptor
- Deep Tunnel Interceptor
- One Overall Manholes
- One Overall Sewerlines
- Constructed Wetlands Municipal Projects
- Constructed Wetland Drainage Areas
- State Roads
- Access Limitations
- Combined Sewer Subcatchment
- Municipal Boundaries



ALCOSAN GSI Project
Homestead (M-45)
 Concept Municipal Constructed Wetland GSI Projects
 Individual Project Drainage Areas

Homestead Concept Commercial / Institutional Permeable Pavement, Green Roof, and Special Case GSI Projects: Summary Table

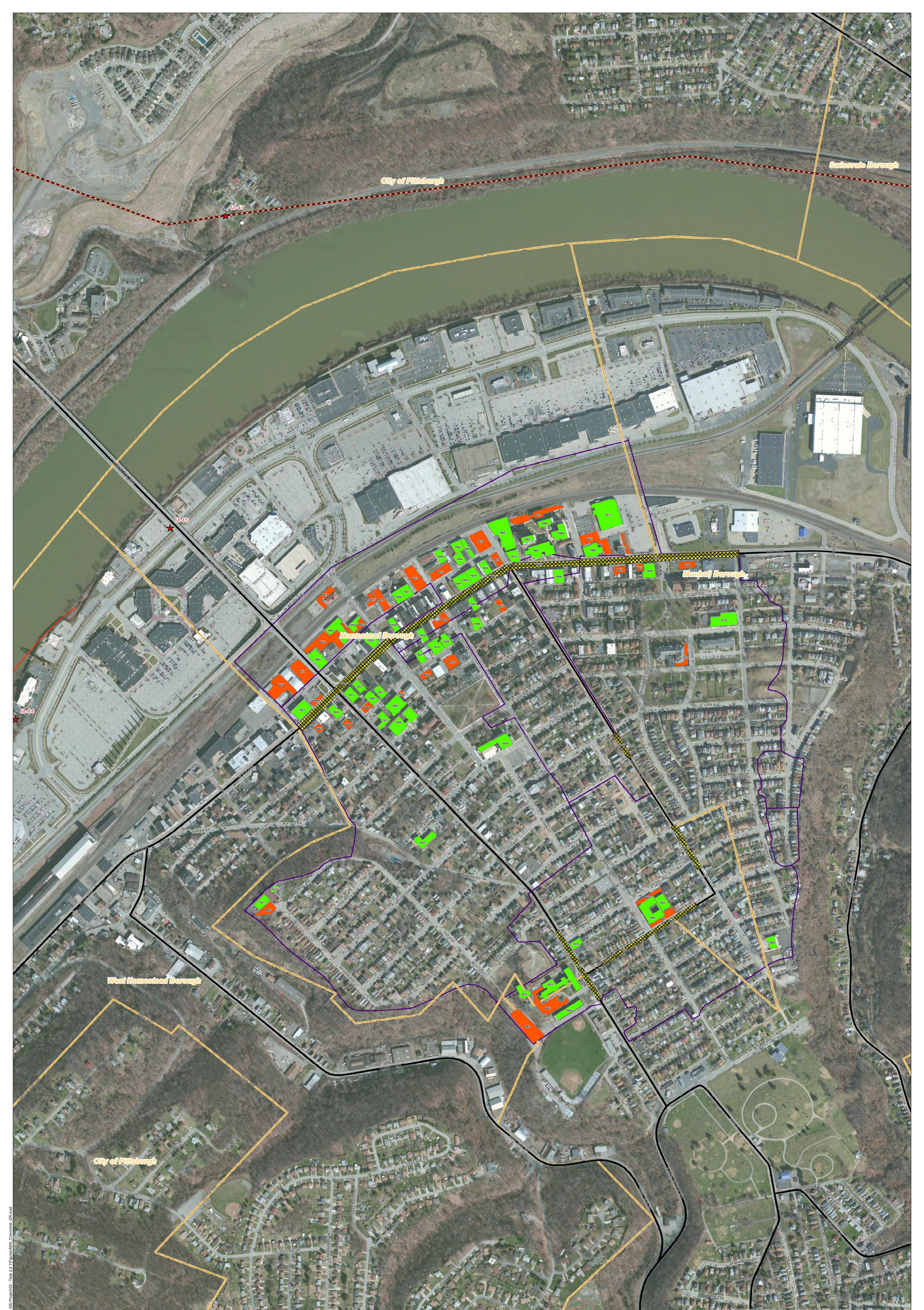
December 24, 2013
Revised October 10, 2014

ALCOSAN POC	Model Subcatchment	Concept Comm / Inst Project UID	BMP Type	Concept Municipal Project Area (acres)	Taxable (acres)	Exempt (acres)	Provisionally Exempt (acres)	Public ROW (acres)
M-45-00	M4500-MB-L-04_S1	HOME_6001	CPP	0.642	0.000	0.485	0.000	0.157
M-45-00	M4500-MB-L-04_S1	HOME_6002	CPP	0.528	0.000	0.528	0.000	0.000
M-45-00	M4500-IM-S-02_S1	HOME_6003	CPP	0.204	0.000	0.204	0.000	0.000
M-45-00	M4500-MB-L-04_S1	HOME_6004	CPP	0.146	0.000	0.146	0.000	0.000
M-45-00	M4500-MB-L-04_S1	HOME_6005	CPP	0.193	0.000	0.193	0.000	0.000
M-45-00	M4500-IM-S-02_S1	HOME_6006	CPP	0.085	0.000	0.085	0.000	0.000
M-45-00	M4500-IM-S-02_S1	HOME_6007	CPP	0.082	0.082	0.000	0.000	0.000
M-45-00	M4500-IM-S-02_S1	HOME_6008	CPP	0.087	0.087	0.000	0.000	0.000
M-45-00	M4500-IM-S-02_S1	HOME_6009	CPP	0.098	0.000	0.098	0.000	0.000
M-45-00	M4500-POC-L-01_S1	HOME_6010	CPP	0.511	0.492	0.000	0.000	0.019
M-45-00	M4500-POC-L-01_S1	HOME_6011	CPP	0.409	0.409	0.000	0.000	0.000
M-45-00	M4500-POC-L-01_S1	HOME_6012	CPP	0.559	0.559	0.000	0.000	0.000
M-45-00	M4500-POC-L-01_S1	HOME_6013	CPP	0.166	0.166	0.000	0.000	0.000
M-45-00	M4500-POC-L-01_S1	HOME_6014	CPP	0.200	0.000	0.180	0.019	0.001
M-45-00	M4500-POC-L-01_S1	HOME_6015	CPP	0.110	0.070	0.040	0.000	0.000
M-45-00	M4500-POC-L-01_S1	HOME_6016	CPP	0.231	0.000	0.231	0.000	0.000
M-45-00	M4500-POC-L-01_S1	HOME_6017	CPP	0.395	0.045	0.311	0.000	0.039
M-45-00	M4500-POC-L-01_S1	HOME_6018	CPP	0.256	0.002	0.226	0.000	0.028
M-45-00	M4500-POC-L-01_S1	HOME_6019	CPP	0.399	0.000	0.387	0.000	0.012
M-45-00	M4500-POC-L-01_S1	HOME_6020	CPP	0.130	0.120	0.000	0.000	0.010
M-45-00	M4500-POC-L-01_S1	HOME_6021	CPP	0.434	0.000	0.379	0.000	0.055
M-45-00	M4500-POC-L-01_S1	HOME_6022	CPP	0.134	0.000	0.000	0.000	0.134
M-45-00	M4500-MB-L-04_S1	HOME_6023	CPP	0.067	0.067	0.000	0.000	0.000
M-45-00	M4500-MB-L-04_S1	HOME_6024	CPP	0.127	0.127	0.000	0.000	0.000
M-45-00	M4500-IM-S-02_S1	HOME_6025	CPP	0.212	0.000	0.212	0.000	0.000

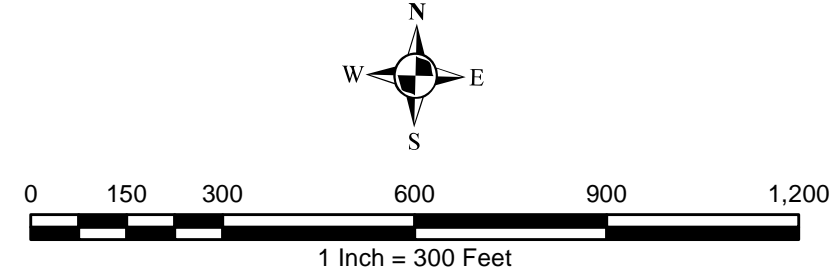
ALCOSAN POC	Model Subcatchment	Concept Comm / Inst Project UID	BMP Type	Concept Municipal Project Area (acres)	Taxable (acres)	Exempt (acres)	Provisionally Exempt (acres)	Public ROW (acres)
M-45-00	M4500-IM-S-02_S1	HOME_6026	CPP	0.104	0.000	0.104	0.000	0.000
M-45-00	M4500-IM-S-03_S1	HOME_6027	CPP	0.100	0.100	0.000	0.000	0.000
M-45-00	M4500-MB-L-04_S1	HOME_6028	CPP	0.159	0.159	0.000	0.000	0.000
M-45-00	M4500-MB-L-04_S1	HOME_6029	CPP	0.142	0.000	0.142	0.000	0.000
M-45-00	M4500-POC-L-01_S1	HOME_6030	CPP	0.197	0.161	0.000	0.000	0.036
M-45-00	M4500-POC-L-01_S1	HOME_6031	CPP	0.413	0.000	0.338	0.000	0.075
M-45-00	M4500-IM-S-02_S1	HOME_6032	CPP	0.041	0.000	0.041	0.000	0.000
M-45-00	M4500-IM-S-02_S1	HOME_7001	GR	0.333	0.000	0.333	0.000	0.000
M-45-00	M4500-POC-L-01_S1	HOME_7002	GR	0.285	0.265	0.000	0.000	0.020
M-45-00	M4500-MB-L-04_S1	HOME_7003	GR	0.136	0.136	0.000	0.000	0.000
M-45-00	M4500-POC-L-01_S1	HOME_7004	GR	0.118	0.000	0.096	0.000	0.022
M-45-00	M4500-POC-L-01_S1	HOME_7005	GR	0.703	0.323	0.380	0.000	0.000
M-45-00	M4500-IM-S-03_S1	HOME_7006	GR	0.157	0.023	0.000	0.130	0.004
M-45-00	M4500-POC-L-01_S1	HOME_7007	GR	0.433	0.000	0.361	0.000	0.072
M-45-00	M4500-POC-L-01_S1	HOME_7008	GR	0.270	0.000	0.265	0.000	0.005
M-45-00	M4500-POC-L-01_S1	HOME_7009	GR	0.233	0.000	0.226	0.000	0.007
M-45-00	M4500-IM-S-03_S1	HOME_7010	GR	0.224	0.224	0.000	0.000	0.000
M-45-00	M4500-POC-L-01_S1	HOME_7011	GR	0.904	0.904	0.000	0.000	0.000
M-45-00	M4500-IM-S-02_S1	HOME_7013	GR	0.171	0.046	0.124	0.000	0.001
M-45-00	M4500-POC-L-01_S1	HOME_7014	GR	0.169	0.169	0.000	0.000	0.000
M-45-00	M4500-MB-L-04_S1	HOME_7015	GR	0.152	0.000	0.152	0.000	0.000
M-45-00	M4500-MB-L-04_S1	HOME_7016	GR	0.115	0.107	0.000	0.000	0.008
M-45-00	M4500-IM-S-02_S1	HOME_7017	GR	0.175	0.173	0.000	0.000	0.002
M-45-00	M4500-POC-L-01_S1	HOME_7018	GR	0.123	0.123	0.000	0.000	0.000
M-45-00	M4500-MB-L-04_S1	HOME_7019	GR	0.424	0.000	0.413	0.000	0.011
M-45-00	M4500-IM-S-03_S1	HOME_7020	GR	0.155	0.155	0.000	0.000	0.000
M-45-00	M4500-IM-S-02_S1	HOME_7021	GR	0.172	0.000	0.172	0.000	0.000
M-45-00	M4500-IM-S-02_S1	HOME_7022	GR	0.045	0.000	0.045	0.000	0.000
M-45-00	M4500-MB-L-04_S1	HOME_7023	GR	0.558	0.000	0.558	0.000	0.000
M-45-00	M4500-MB-L-04_S1	HOME_7024	GR	0.254	0.000	0.254	0.000	0.000

ALCOSAN POC	Model Subcatchment	Concept Comm / Inst Project UID	BMP Type	Concept Municipal Project Area (acres)	Taxable (acres)	Exempt (acres)	Provisionally Exempt (acres)	Public ROW (acres)
M-45-00	M4500-IM-S-02_S1	HOME_7025	GR	0.241	0.231	0.000	0.000	0.010
M-45-00	M4500-IM-S-02_S1	HOME_7026	GR	0.467	0.000	0.467	0.000	0.000
M-45-00	M4500-IM-S-02_S1	HOME_7027	GR	0.296	0.295	0.000	0.000	0.001
M-45-00	M4500-IM-S-02_S1	HOME_7028	GR	0.367	0.031	0.307	0.000	0.029
M-45-00	M4500-IM-S-02_S1	HOME_7029	GR	0.158	0.158	0.000	0.000	0.000
M-45-00	M4500-IM-S-02_S1	HOME_7030	GR	0.163	0.000	0.163	0.000	0.000
M-45-00	M4500-IM-S-02_S1	HOME_7031	GR	0.138	0.000	0.128	0.000	0.010
M-45-00	M4500-IM-S-02_S1	HOME_7032	GR	0.131	0.113	0.018	0.000	0.000
M-45-00	M4500-IM-S-02_S1	HOME_7033	GR	0.201	0.189	0.000	0.000	0.012
M-45-00	M4500-IM-S-03_S1	HOME_7034	GR	0.129	0.129	0.000	0.000	0.000
M-45-00	M4500-POC-L-01_S1	HOME_7035	GR	0.122	0.122	0.000	0.000	0.000
M-45-00	M4500-IM-S-02_S1	HOME_7036	GR	0.122	0.118	0.000	0.000	0.004
M-45-00	M4500-POC-L-01_S1	HOME_7037	GR	0.169	0.160	0.006	0.000	0.003
M-45-00	M4500-POC-L-01_S1	HOME_7038	GR	0.167	0.167	0.000	0.000	0.000
M-45-00	M4500-POC-L-01_S1	HOME_7039	GR	0.206	0.156	0.040	0.000	0.010
M-45-00	M4500-POC-L-01_S1	HOME_7040	GR	0.164	0.160	0.000	0.000	0.004
M-45-00	M4500-POC-L-01_S1	HOME_7041	GR	0.131	0.129	0.000	0.000	0.002
M-45-00	M4500-POC-L-01_S1	HOME_7042	GR	0.145	0.140	0.000	0.000	0.005
M-45-00	M4500-POC-L-01_S1	HOME_7043	GR	0.121	0.120	0.000	0.000	0.001
M-45-00	M4500-POC-L-01_S1	HOME_7044	GR	0.141	0.141	0.000	0.000	0.000
M-45-00	M4500-POC-L-01_S1	HOME_7045	GR	0.153	0.153	0.000	0.000	0.000
M-45-00	M4500-POC-L-01_S1	HOME_7046	GR	0.136	0.135	0.000	0.000	0.001
M-45-00	M4500-POC-L-01_S1	HOME_7047	GR	0.120	0.019	0.096	0.000	0.005
M-45-00	M4500-IM-S-03_S1	HOME_7048	GR	0.186	0.184	0.000	0.000	0.002
M-45-00	M4500-MB-L-04_S1	HOME_7049	GR	0.232	0.226	0.000	0.000	0.006
M-45-00	M4500-POC-L-01_S1	HOME_7050	GR	0.368	0.367	0.000	0.000	0.001
M-45-00	M4500-POC-L-01_S1	HOME_7051	GR	0.097	0.000	0.087	0.000	0.010
M-45-00	M4500-MB-L-04_S1	HOME_7052	GR	0.204	0.000	0.204	0.000	0.000
M-45-00	M4500-MB-L-04_S1	HOME_7053	GR	0.472	0.000	0.472	0.000	0.000
M-45-00	M4500-POC-L-01_S1	HOME_8001	SRPP	1.230	0.000	0.000	0.000	1.230

ALCOSAN POC	Model Subcatchment	Concept Comm / Inst Project UID	BMP Type	Concept Municipal Project Area (acres)	Taxable (acres)	Exempt (acres)	Provisionally Exempt (acres)	Public ROW (acres)
M-45-00	M4500-MB-L-04_S1	HOME_8002	SRPP	0.527	0.000	0.000	0.000	0.527
M-45-00	M4500-MB-L-04_S1	HOME_8003	SRPP	0.333	0.000	0.000	0.000	0.333
M-45-00	M4500-MB-L-04_S1	HOME_8004	SRPP	0.378	0.000	0.000	0.000	0.378
M-45-00	M4500-MB-L-04_S1	HOME_8005	SRPP	0.371	0.000	0.000	0.000	0.371
M-45-00	M4500-MB-L-04_S1	HOME_8006	SRPP	1.586	0.000	0.000	0.000	1.586
M-45-00	M4500-IM-S-03_S1	HOME_8007	SRPP	0.572	0.000	0.000	0.000	0.572
M-45-00	M4500-IM-S-03_S1	HOME_8008	SRPP	0.178	0.000	0.000	0.000	0.178
M-45-00	M4500-IM-S-02_S1	HOME_8009	SRPP	1.357	0.000	0.000	0.000	1.357



- ★ ALCOSAN Structures
- ALCOSAN Shallow-Cut Interceptor
- ALCOSAN Deep Tunnel Interceptor
- Special Case
- Concept Commercial / Institutional Permeable Pavement Projects
- Concept Green Roof Projects
- State Roads
- Municipal Boundaries
- Combined Sewer Subcatchment



ALCOSAN GSI Project
M-45
Concept Commercial / Institutional
and Green Roof GSI Projects

P:\GIS\INFERNO\34\34\05_ALCOSAN_GSI_Project\03 - Task 2.1\Figures\M45_Corridor_GRI.mxd
 Source: Esri, DigitalGlobe, GeoEye, IGN, GeoEye, AeroGRID, IGN, SPP, and the U.S. Department of the Interior