

5.16 Study Area 16 – Lower Hill / Duquesne

These findings apply to ALCOSAN Point of Connection M-05 which includes combined sewer systems in the City of Pittsburgh.

Lower Hill / Duquesne - BMP GIS Features

The SUSTAIN BMP siting tool analysis resulted in identification of a total of 2774 BMP GIS Features covering 187 acres, which consisted of the following:

Table 5.16-1 - TOTAL SUSTAIN BMP Features Output

SUSTAIN BMP Feature Type	Number of Features	Area of BMP Features (Acres)
Permeable Pavement	798	64
Bioretention	666	36
Infiltration Basin/Trenches	279	17
Vegetated Filter Strips	407	44
Grass Swales	618	27
Constructed Wetlands	6	< 1

Locations of all identified BMP GIS features are presented on the SUSTAIN BMP Features Figure.

Lower Hill / Duquesne - Concept Municipal GSI Projects

Based on the BMP features, 82 concept Municipal GSI Projects were identified covering 12 total acres with a corresponding drainage area delineation of 125 total acres and consisted of the following:

Table 5.16-2 - Summary of Identified Concept Municipal GSI Projects

Concept GSI Technology	Number of Projects	GSI Project Area (Acres)	Project Drainage Area (Acres)
Permeable Pavement	19	7	72
Bioretention	45	3	28
Infiltration Basin/Trenches	18	2	24
Vegetated Filter Strips	0	0	0
Grass Swales	0	0	0
Constructed Wetlands	0	0	0

Project statistics including ALCOSAN POC, model subcatchment, BMP type, project area, area of project inside and outside of the public right-of-way, tributary drainage area, and tributary impervious drainage area are provided in the Concept Municipal Projects Table. Locations of all identified Concept Municipal GSI projects are presented in the Concept Municipal GSI Projects Figure (1) and the corresponding delineated tributary drainage areas are presented by BMP in the Individual Project Drainage Area Figures (3).

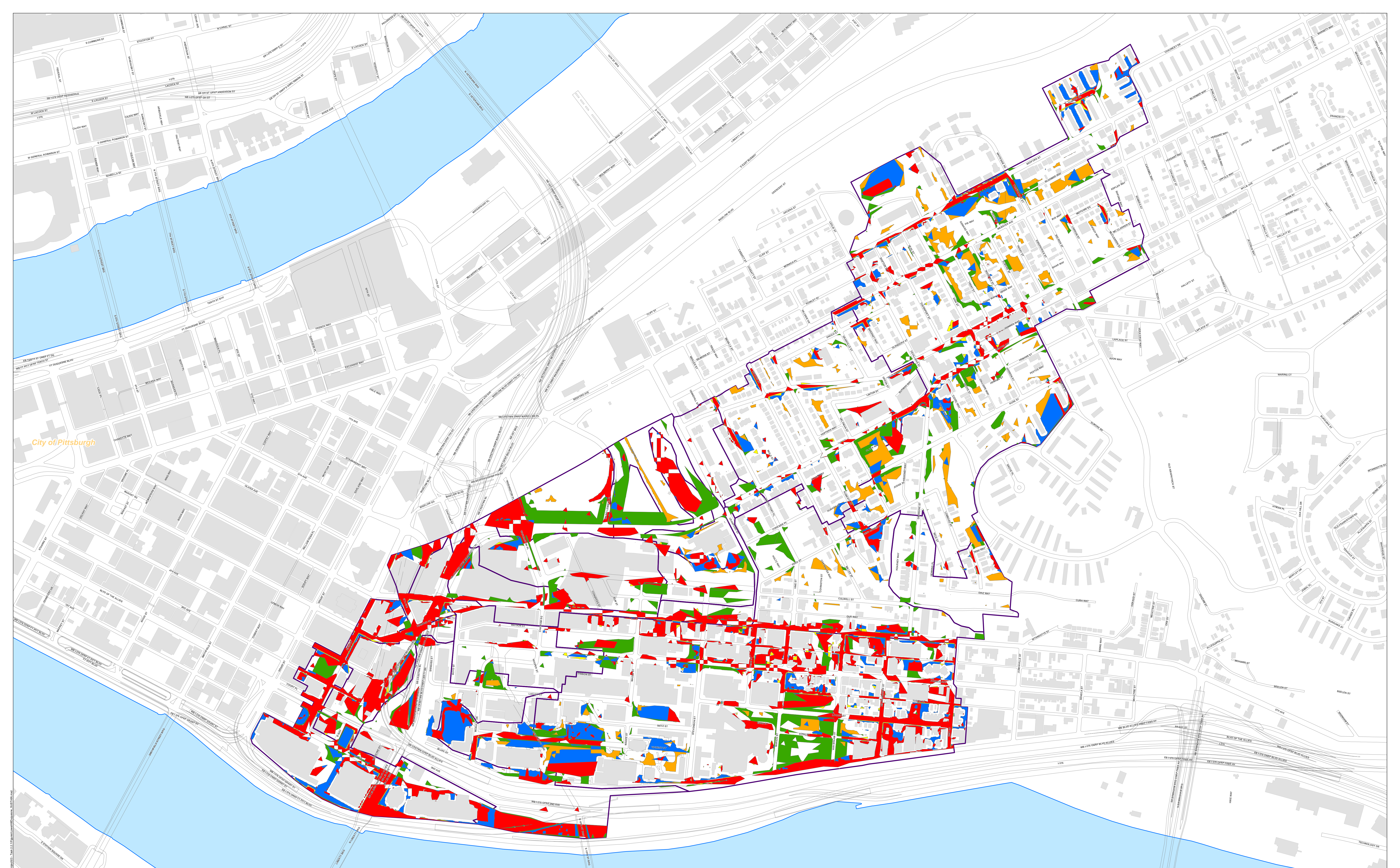
Lower Hill / Duquesne - Concept Commercial/Institutional and Special Case GSI Projects

Based on the BMP features, 159 concept Commercial/Institutional and Special Case GSI Projects were identified covering 67 total acres and consisted of the following:

Table 5.16-3 - Summary of Identified Concept Commercial/Institutional and Special Case GSI Projects

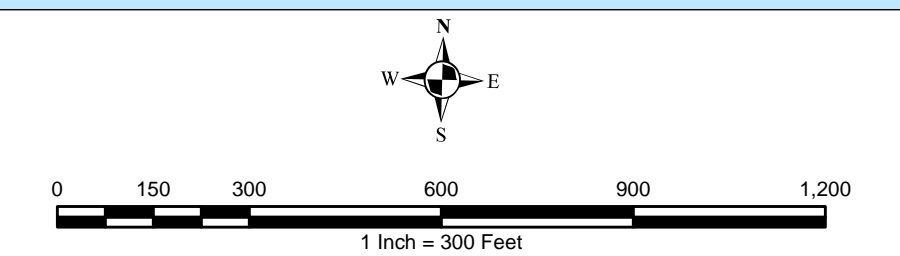
Concept GSI Technology or Special Case Project Category	Number of Projects	GSI Project Area (Acres)
Commercial/Institutional Permeable Pavement	73	18
Commercial/Institutional Green Roofs	70	31
State Route Permeable Pavement	16	18
Busway Permeable Pavement	0	0
Busway Bioretention	0	0

Project statistics including ALCOSAN POC, model subcatchment, BMP type, project area, area of project taxable, exempt, provisionally exempt and in the public right-of-way are provided in Concept Commercial / Institutional GSI Projects Table. Locations of all identified Concept Commercial / Institutional GSI projects are presented in the Concept Commercial / Institutional GSI Projects Figure (1).



City of Pittsburgh

- Combined Sewer Subcatchment
- Permeable Pavement
- Bioretention Basin
- Infiltration Basin / Trench
- Vegetated Filter Strips
- Grass Swales
- Constructed Wetlands
- Municipal Boundaries



ALCOSAN GSI Project
Lower Hill/Duquesne M-05
SUSTAIN BMP Features

Lower Hill-Duquesne Concept Municipal Projects

June 4, 2014

Revised October 7, 2014

*Note: The drainage area presented in this table is representative of the individual drainage area tributary to each concept municipal project without any revisions to account for overlap, without engineering judgment revisions applied, and without the drainage areas being clipped to their corresponding model subcatchments.

ALCOSAN POC	Model Subcatchment	Concept Municipal Project UID	BMP Type	Concept Municipal Project Area (acres)	Public ROW or Parcel		Concept Municipal Project Individual Drainage Area (acres)*	Concept Municipal Project Individual Project Impervious Drainage Area (acres)*
					Area of Municipal Project in Public ROW (acres)	Area of Municipal Project outside of Public ROW (acres)		
M-05-00	M-05-C-13	LHDQ_1	PP	0.187	0.177	0.010	1.605	0.487
M-05-00	M-05-C-13	LHDQ_2	PP	0.895	0.895	0.000	20.412	7.760
M-05-00	M-05-C-13	LHDQ_3	PP	0.646	0.646	0.000	7.970	3.205
M-05-00	M-05-C-12	LHDQ_4	PP	0.112	0.112	0.000	0.574	0.268
M-05-00	M-05-C-15	LHDQ_5	PP	0.210	0.210	0.000	0.503	0.271
M-05-00	M-05-C-15	LHDQ_6	PP	0.389	0.368	0.021	4.935	1.819
M-05-00	M-05-C-15	LHDQ_7	PP	0.148	0.148	0.000	0.405	0.167
M-05-00	M-05-C-15	LHDQ_8	PP	0.367	0.367	0.000	3.701	1.215
M-05-00	M-05-C-10	LHDQ_9	PP	0.680	0.680	0.000	3.486	1.847
M-05-00	M-05-C-10	LHDQ_10	PP	0.200	0.200	0.000	1.468	1.011
M-05-00	M-05-C-10	LHDQ_11	PP	1.214	1.214	0.000	4.959	3.455
M-05-00	M-05-C-10	LHDQ_12	PP	0.207	0.132	0.075	1.923	1.721
M-05-00	M-05-C-10	LHDQ_13	PP	0.284	0.284	0.000	0.950	0.709
M-05-00	M-05-C-10	LHDQ_14	PP	0.315	0.315	0.000	5.196	4.041
M-05-00	M-05-C-10	LHDQ_15	PP	0.271	0.271	0.000	2.927	1.788
M-05-00	M-05-C-2-B	LHDQ_16	PP	0.296	0.000	0.296	1.002	0.700
M-05-00	M-05-C-1	LHDQ_17	PP	0.492	0.044	0.448	6.996	5.082
M-05-00	M-05-C-2-A	LHDQ_18	PP	0.113	0.113	0.000	2.073	1.490
M-05-00	M-05-C-3	LHDQ_19	PP	0.229	0.228	0.001	0.760	0.463
M-05-00	M-05-C-1	LHDQ_1001	BR	0.022	0.009	0.013	0.065	0.065
M-05-00	M-05-C-3	LHDQ_1002	BR	0.259	0.000	0.259	0.560	0.164
M-05-00	M-05-C-15	LHDQ_1003	BR	0.017	0.005	0.012	0.432	0.236
M-05-00	M-05-C-15	LHDQ_1004	BR	0.010	0.007	0.003	0.095	0.058
M-05-00	M-05-C-15	LHDQ_1005	BR	0.028	0.028	0.000	0.102	0.000
M-05-00	M-05-C-13	LHDQ_1006	BR	0.023	0.019	0.004	0.146	0.103
M-05-00	M-05-C-13	LHDQ_1007	BR	0.063	0.037	0.026	0.251	0.068
M-05-00	M-05-C-13	LHDQ_1008	BR	0.029	0.022	0.007	0.130	0.075
M-05-00	M-05-C-13	LHDQ_1009	BR	0.315	0.101	0.214	1.632	0.577

ALCOSAN POC	Model Subcatchment	Concept Municipal Project UID	BMP Type	Concept Municipal Project Area (acres)	Public ROW or Parcel		Concept Municipal Project Individual Drainage Area (acres)*	Concept Municipal Project Individual Project Impervious Drainage Area (acres)*
					Area of Municipal Project in Public ROW (acres)	Area of Municipal Project outside of Public ROW (acres)		
M-05-00	M-05-C-13	LHDQ_1010	BR	0.026	0.019	0.007	1.337	0.423
M-05-00	M-05-C-13	LHDQ_1011	BR	0.044	0.025	0.019	0.980	0.117
M-05-00	M-05-C-13	LHDQ_1012	BR	0.048	0.034	0.014	0.704	0.200
M-05-00	M-05-C-13	LHDQ_1013	BR	0.081	0.006	0.075	0.154	0.019
M-05-00	M-05-C-13	LHDQ_1014	BR	0.067	0.067	0.000	1.281	0.373
M-05-00	M-05-C-13	LHDQ_1015	BR	0.062	0.034	0.028	0.124	0.055
M-05-00	M-05-C-13	LHDQ_1016	BR	0.070	0.033	0.037	0.105	0.037
M-05-00	M-05-C-13	LHDQ_1017	BR	0.042	0.023	0.019	0.308	0.180
M-05-00	M-05-C-13	LHDQ_1018	BR	0.103	0.052	0.051	4.717	1.266
M-05-00	M-05-C-13	LHDQ_1019	BR	0.019	0.018	0.001	0.264	0.073
M-05-00	M-05-C-13	LHDQ_1020	BR	0.128	0.079	0.049	0.655	0.148
M-05-00	M-05-C-13	LHDQ_1021	BR	0.037	0.023	0.014	0.083	0.014
M-05-00	M-05-C-13	LHDQ_1022	BR	0.017	0.011	0.006	0.122	0.057
M-05-00	M-05-C-10	LHDQ_1023	BR	0.040	0.021	0.019	0.256	0.122
M-05-00	M-05-C-10	LHDQ_1024	BR	0.034	0.016	0.018	0.458	0.093
M-05-00	M-05-C-10	LHDQ_1025	BR	0.032	0.012	0.020	0.326	0.190
M-05-00	M-05-C-10	LHDQ_1026	BR	0.032	0.013	0.019	0.120	0.108
M-05-00	M-05-C-10	LHDQ_1027	BR	0.033	0.016	0.017	0.394	0.213
M-05-00	M-05-C-10	LHDQ_1028	BR	0.049	0.000	0.049	0.207	0.162
M-05-00	M-05-C-13	LHDQ_1029	BR	0.159	0.029	0.130	0.203	0.026
M-05-00	M-05-C-13	LHDQ_1030	BR	0.090	0.026	0.064	0.098	0.022
M-05-00	M-05-C-13	LHDQ_1031	BR	0.042	0.030	0.012	0.408	0.202
M-05-00	M-05-C-10	LHDQ_1032	BR	0.037	0.011	0.026	0.108	0.027
M-05-00	M-05-C-2-B	LHDQ_1033	BR	0.043	0.000	0.043	0.099	0.023
M-05-00	M-05-C-13	LHDQ_1034	BR	0.044	0.026	0.018	0.493	0.267
M-05-00	M-05-C-13	LHDQ_1035	BR	0.023	0.009	0.014	1.176	0.126
M-05-00	M-05-C-13	LHDQ_1036	BR	0.054	0.027	0.027	2.543	0.971
M-05-00	M-05-C-13	LHDQ_1037	BR	0.027	0.013	0.014	0.090	0.031
M-05-00	M-05-C-13	LHDQ_1038	BR	0.073	0.023	0.050	3.957	1.690
M-05-00	M-05-C-2-B	LHDQ_1039	BR	0.129	0.000	0.129	0.221	0.109
M-05-00	M-05-C-2-B	LHDQ_1040	BR	0.115	0.000	0.115	0.129	0.012
M-05-00	M-05-C-10	LHDQ_1041	BR	0.070	0.028	0.042	2.385	1.537
M-05-00	M-05-C-13	LHDQ_1042	BR	0.032	0.012	0.020	0.037	0.002
M-05-00	M-05-C-13	LHDQ_1043	BR	0.074	0.047	0.027	0.335	0.142

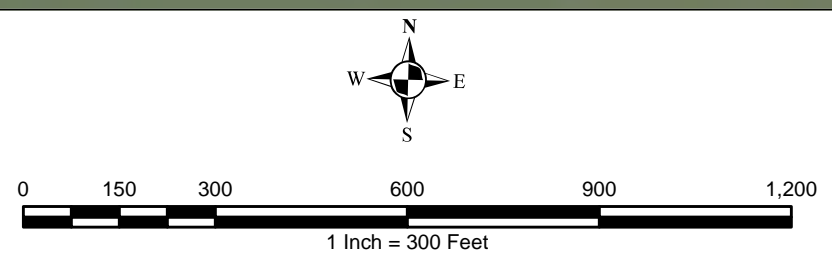
ALCOSAN POC	Model Subcatchment	Concept Municipal Project UID	BMP Type	Concept Municipal Project Area (acres)	Public ROW or Parcel		Concept Municipal Project Individual Drainage Area (acres)*	Concept Municipal Project Individual Project Impervious Drainage Area (acres)*
					Area of Municipal Project in Public ROW (acres)	Area of Municipal Project outside of Public ROW (acres)		
M-05-00	M-05-C-13	LHDQ_1044	BR	0.020	0.015	0.005	0.034	0.019
M-05-00	M-05-C-13	LHDQ_1045	BR	0.032	0.029	0.003	0.083	0.049
M-05-00	M-05-C-15	LHDQ_2001	IB	0.111	0.053	0.058	2.240	0.951
M-05-00	M-05-C-2-B	LHDQ_2002	IB	0.222	0.090	0.132	0.365	0.192
M-05-00	M-05-C-13	LHDQ_2003	IB	0.101	0.052	0.049	0.435	0.220
M-05-00	M-05-C-13	LHDQ_2004	IB	0.047	0.022	0.025	0.411	0.135
M-05-00	M-05-C-13	LHDQ_2005	IB	0.022	0.015	0.007	0.030	0.006
M-05-00	M-05-C-13	LHDQ_2006	IB	0.137	0.094	0.043	1.693	0.669
M-05-00	M-05-C-13	LHDQ_2007	IB	0.070	0.040	0.030	1.678	0.479
M-05-00	M-05-C-13	LHDQ_2008	IB	0.064	0.022	0.042	2.677	0.725
M-05-00	M-05-C-13	LHDQ_2009	IB	0.040	0.018	0.022	0.451	0.125
M-05-00	M-05-C-10	LHDQ_2010	IB	0.139	0.056	0.083	0.764	0.354
M-05-00	M-05-C-10	LHDQ_2011	IB	0.014	0.005	0.009	0.124	0.121
M-05-00	M-05-C-13	LHDQ_2012	IB	0.237	0.097	0.140	2.241	0.912
M-05-00	M-05-C-13	LHDQ_2013	IB	0.045	0.028	0.017	6.149	2.090
M-05-00	M-05-C-13	LHDQ_2014	IB	0.056	0.015	0.041	0.113	0.028
M-05-00	M-05-C-13	LHDQ_2015	IB	0.275	0.075	0.200	1.048	0.205
M-05-00	M-05-C-11	LHDQ_2016	IB	0.066	0.022	0.044	0.139	0.055
M-05-00	M-05-C-12	LHDQ_2017	IB	0.175	0.037	0.138	0.909	0.125
M-05-00	M-05-C-15	LHDQ_2018	IB	0.184	0.132	0.052	2.963	1.401



- ★ ALCOSAN Structures
- ALCOSAN Shallow-Cut Interceptor
- ALCOSAN Deep Tunnel Interceptor
- One Overall Manholes
- One Overall Sewerlines

- Municipal Projects**
- Infiltration Basin
 - Bioretention
 - Permeable Pavement

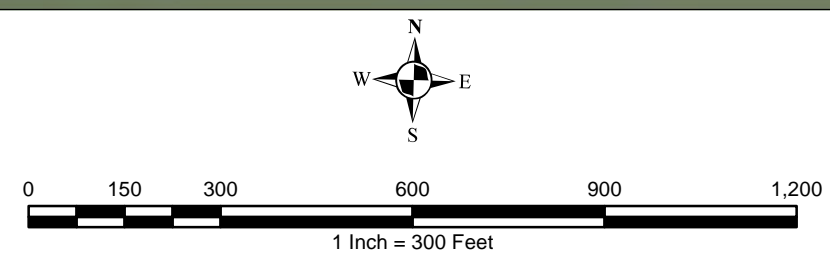
- State Roads
- Combined Sewer Subcatchment
- Municipal Boundaries



ALCOSAN GSI Project
 Lower Hill/Duquesne M-05
 Concept Municipal GSI Projects



- ★ ALCOSAN Structures
- ALCOSAN Shallow-Cut Interceptor
- ALCOSAN Deep Tunnel Interceptor
- One Overall Manholes
- One Overall Sewerlines
- Permeable Pavement Municipal Projects
- Permeable Pavement Drainage Areas
- State Roads
- Combined Sewer Subcatchment
- Municipal Boundaries

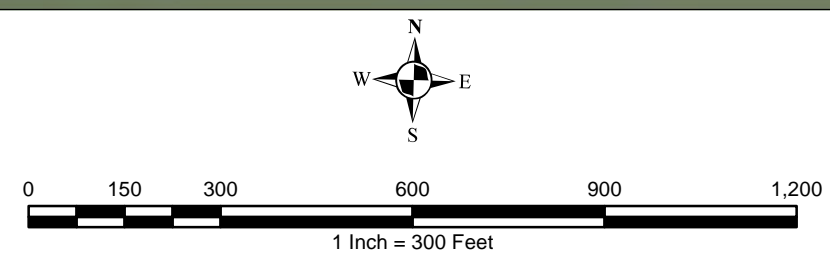


ALCOSAN GSI Project
 Lower Hill / Duquesne (M-05)
 Concept Municipal Permeable Pavement GSI Projects
 Individual Project Drainage Areas

ALCOSAN GSI Project - Lower Hill / Duquesne (M-05) - Concept Municipal Permeable Pavement GSI Projects - Individual Project Drainage Areas



- ★ ALCOSAN Structures
- ALCOSAN Shallow-Cut Interceptor
- ALCOSAN Deep Tunnel Interceptor
- One Overall Manholes
- One Overall Sewerlines
- Bioretention Municipal Projects
- Bioretention Drainage Areas
- State Roads
- Combined Sewer Subcatchment
- Municipal Boundaries

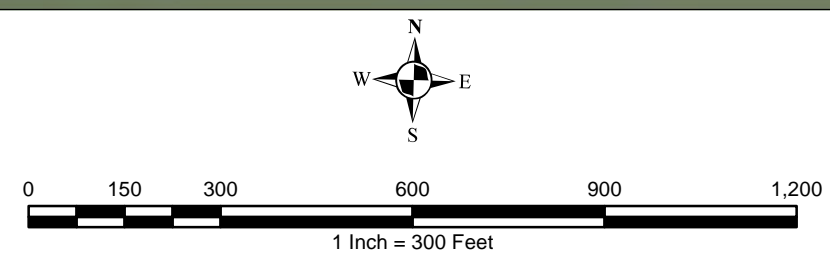


ALCOSAN GSI Project
 Lower Hill / Duquesne (M-05)
 Concept Municipal Bioretention GSI Projects
 Individual Project Drainage Areas

ALCOSAN GSI Project - Lower Hill / Duquesne (M-05) - Concept Municipal Bioretention GSI Projects - Individual Project Drainage Areas



- ★ ALCOSAN Structures
- ALCOSAN Shallow-Cut Interceptor
- ALCOSAN Deep Tunnel Interceptor
- One Overall Manholes
- One Overall Sewerlines
- Infiltration Basin Municipal Projects
- Infiltration Basin Drainage Areas
- State Roads
- Combined Sewer Subcatchment
- Municipal Boundaries



ALCOSAN GSI Project
 Lower Hill / Duquesne (M-05)
 Concept Municipal Infiltration Basin GSI Projects
 Individual Project Drainage Areas

ALCOSAN GSI Project - Lower Hill / Duquesne (M-05) - Concept Municipal Infiltration Basin GSI Projects - Individual Project Drainage Areas

**Lower Hill-Duquesne Concept Commercial / Institutional Permeable Pavement, Green Roof, and Special Case GSI Projects:
Summary Table**

February 21, 2014
Revised October 10, 2014

ALCOSAN POC	Model Subcatchment	Concept Comm / Inst Project UID	BMP Type	Concept Municipal Project Area (acres)	Taxable (acres)	Exempt (acres)	Provisionally Exempt (acres)	Public ROW (acres)
M-05-00	M-05-DWF-9/M-05-C-8	LHDQ_6001	CPP	0.545	0.000	0.544	0.000	0.001
M-05-00	M-05-DWF-9/M-05-C-9-A	LHDQ_6002	CPP	0.187	0.000	0.187	0.000	0.000
M-05-00	M-05-DWF-9/M-05-C-9-A	LHDQ_6003	CPP	1.736	0.000	1.637	0.000	0.099
M-05-00	M-05-DWF-6/M-05-C-13	LHDQ_6004	CPP	0.070	0.000	0.070	0.000	0.000
M-05-00	M-05-DWF-6/M-05-C-13	LHDQ_6005	CPP	0.077	0.000	0.077	0.000	0.000
M-05-00	M-05-DWF-6/M-05-C-13	LHDQ_6006	CPP	0.131	0.131	0.000	0.000	0.000
M-05-00	M-05-DWF-6/M-05-C-13	LHDQ_6007	CPP	0.058	0.058	0.000	0.000	0.000
M-05-00	M-05-DWF-7/M-05-C-15	LHDQ_6008	CPP	0.114	0.000	0.114	0.000	0.000
M-05-00	M-05-DWF-7/M-05-C-15	LHDQ_6009	CPP	0.293	0.050	0.000	0.000	0.243
M-05-00	M-05-DWF-6/M-05-C-13	LHDQ_6010	CPP	0.115	0.004	0.064	0.000	0.047
M-05-00	M-05-DWF-6/M-05-C-13	LHDQ_6011	CPP	0.106	0.002	0.048	0.000	0.056
M-05-00	M-05-DWF-7/M-05-C-15	LHDQ_6012	CPP	0.121	0.000	0.113	0.000	0.008
M-05-00	M-05-DWF-7/M-05-C-15	LHDQ_6013	CPP	0.344	0.000	0.164	0.000	0.180
M-05-00	M-05-DWF-7/M-05-C-15	LHDQ_6014	CPP	0.159	0.159	0.000	0.000	0.000
M-05-00	M-05-DWF-7/M-05-C-15	LHDQ_6015	CPP	0.067	0.067	0.000	0.000	0.000
M-05-00	M-05-DWF-7/M-05-C-15	LHDQ_6016	CPP	0.270	0.008	0.000	0.000	0.262
M-05-00	M-05-DWF-5/M-05-C-11	LHDQ_6017	CPP	0.221	0.221	0.000	0.000	0.000
M-05-00	M-05-DWF-5/M-05-C-11	LHDQ_6018	CPP	0.352	0.352	0.000	0.000	0.000
M-05-00	M-05-DWF-1/M-05-C-1	LHDQ_6025	CPP	0.090	0.030	0.000	0.000	0.060
M-05-00	M-05-DWF-1/M-05-C-1	LHDQ_6026	CPP	0.276	0.274	0.000	0.000	0.002
M-05-00	M-05-DWF-2/M-05-C-2-A	LHDQ_6027	CPP	0.361	0.007	0.354	0.000	0.000
M-05-00	M-05-DWF-1/M-05-C-1	LHDQ_6028	CPP	0.218	0.166	0.000	0.000	0.052
M-05-00	M-05-DWF-1/M-05-C-1	LHDQ_6029	CPP	0.066	0.043	0.023	0.000	0.000
M-05-00	M-05-DWF-1/M-05-C-1	LHDQ_6030	CPP	0.048	0.035	0.012	0.001	0.000
M-05-00	M-05-DWF-1/M-05-C-1	LHDQ_6031	CPP	0.046	0.001	0.023	0.000	0.022

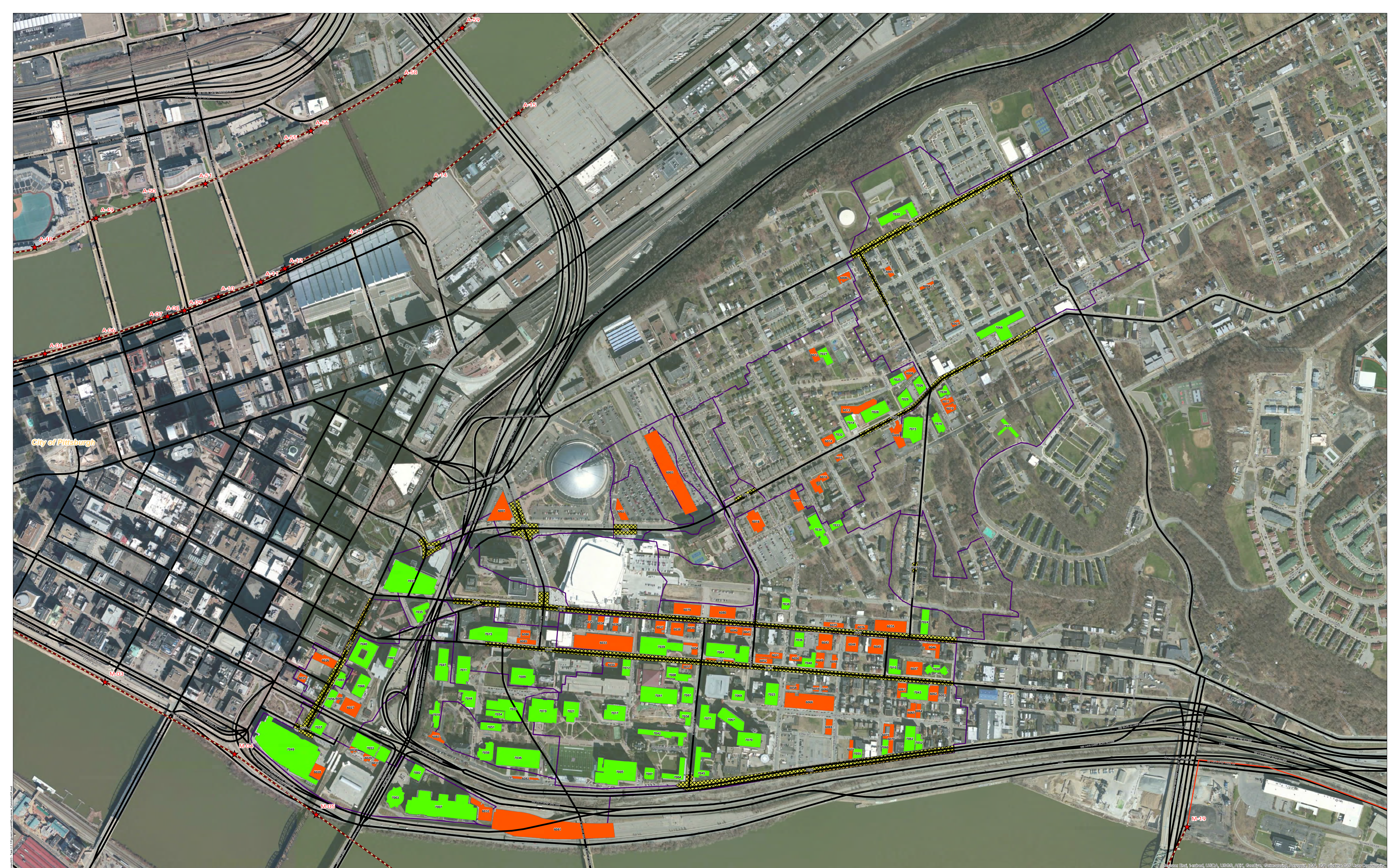
ALCOSAN POC	Model Subcatchment	Concept Comm / Inst Project UID	BMP Type	Concept Municipal Project Area (acres)	Taxable (acres)	Exempt (acres)	Provisionally Exempt (acres)	Public ROW (acres)
M-05-00	M-05-DWF-1/M-05-C-1	LHDQ_6032	CPP	0.349	0.000	0.009	0.000	0.340
M-05-00	M-05-DWF-3/M-05-C-10	LHDQ_6033	CPP	1.207	0.000	1.204	0.000	0.003
M-05-00	M-05-DWF-3/M-05-C-10	LHDQ_6034	CPP	0.122	0.042	0.000	0.000	0.080
M-05-00	M-05-DWF-3/M-05-C-10	LHDQ_6035	CPP	0.064	0.021	0.000	0.000	0.043
M-05-00	M-05-DWF-3/M-05-C-10	LHDQ_6036	CPP	0.099	0.008	0.000	0.000	0.091
M-05-00	M-05-DWF-3/M-05-C-10	LHDQ_6037	CPP	0.162	0.046	0.000	0.000	0.116
M-05-00	M-05-DWF-3/M-05-C-10	LHDQ_6038	CPP	0.222	0.002	0.049	0.000	0.171
M-05-00	M-05-DWF-3/M-05-C-10	LHDQ_6039	CPP	0.083	0.047	0.000	0.000	0.036
M-05-00	M-05-DWF-3/M-05-C-10	LHDQ_6040	CPP	0.164	0.164	0.000	0.000	0.000
M-05-00	M-05-DWF-3/M-05-C-10	LHDQ_6041	CPP	0.085	0.037	0.000	0.000	0.048
M-05-00	M-05-DWF-3/M-05-C-10	LHDQ_6043	CPP	0.313	0.000	0.000	0.000	0.313
M-05-00	M-05-DWF-3/M-05-C-10	LHDQ_6044	CPP	0.259	0.080	0.000	0.000	0.179
M-05-00	M-05-DWF-3/M-05-C-10	LHDQ_6045	CPP	0.287	0.063	0.000	0.000	0.224
M-05-00	M-05-DWF-3/M-05-C-10	LHDQ_6046	CPP	0.192	0.192	0.000	0.000	0.000
M-05-00	M-05-DWF-3/M-05-C-10	LHDQ_6047	CPP	0.293	0.293	0.000	0.000	0.000
M-05-00	M-05-DWF-3/M-05-C-10	LHDQ_6048	CPP	0.093	0.014	0.000	0.000	0.079
M-05-00	M-05-DWF-3/M-05-C-10	LHDQ_6049	CPP	0.172	0.020	0.000	0.000	0.152
M-05-00	M-05-DWF-3/M-05-C-10	LHDQ_6050	CPP	0.105	0.042	0.000	0.000	0.063
M-05-00	M-05-DWF-3/M-05-C-10	LHDQ_6051	CPP	0.165	0.001	0.055	0.000	0.109
M-05-00	M-05-DWF-3/M-05-C-10	LHDQ_6052	CPP	0.129	0.017	0.000	0.000	0.112
M-05-00	M-05-DWF-3/M-05-C-10	LHDQ_6054	CPP	0.125	0.000	0.121	0.000	0.004
M-05-00	M-05-DWF-3/M-05-C-10	LHDQ_6055	CPP	0.067	0.000	0.067	0.000	0.000
M-05-00	M-05-DWF-3/M-05-C-10	LHDQ_6057	CPP	0.065	0.000	0.000	0.000	0.065
M-05-00	M-05-DWF-3/M-05-C-10	LHDQ_6058	CPP	0.083	0.042	0.000	0.000	0.041
M-05-00	M-05-DWF-3/M-05-C-10	LHDQ_6059	CPP	0.050	0.001	0.000	0.000	0.049
M-05-00	M-05-DWF-3/M-05-C-10	LHDQ_6060	CPP	0.047	0.020	0.000	0.000	0.027
M-05-00	M-05-DWF-3/M-05-C-10	LHDQ_6061	CPP	0.146	0.145	0.000	0.000	0.001
M-05-00	M-05-DWF-3/M-05-C-10	LHDQ_6062	CPP	0.207	0.197	0.000	0.000	0.010
M-05-00	M-05-DWF-3/M-05-C-10	LHDQ_6063	CPP	0.052	0.015	0.005	0.000	0.032
M-05-00	M-05-DWF-3/M-05-C-10	LHDQ_6064	CPP	0.096	0.025	0.000	0.000	0.071

ALCOSAN POC	Model Subcatchment	Concept Comm / Inst Project UID	BMP Type	Concept Municipal Project Area (acres)	Taxable (acres)	Exempt (acres)	Provisionally Exempt (acres)	Public ROW (acres)
M-05-00	M-05-DWF-3/M-05-C-10	LHDQ_6065	CPP	0.144	0.084	0.000	0.000	0.060
M-05-00	M-05-DWF-3/M-05-C-10	LHDQ_6066	CPP	0.998	0.080	0.000	0.000	0.918
M-05-00	M-05-DWF-3/M-05-C-10	LHDQ_6068	CPP	0.092	0.000	0.000	0.000	0.092
M-05-00	M-05-DWF-3/M-05-C-10	LHDQ_6069	CPP	0.139	0.000	0.138	0.000	0.001
M-05-00	M-05-DWF-3/M-05-C-10	LHDQ_6070	CPP	0.176	0.074	0.000	0.000	0.102
M-05-00	M-05-DWF-3/M-05-C-10	LHDQ_6071	CPP	0.099	0.099	0.000	0.000	0.000
M-05-00	M-05-DWF-3/M-05-C-10	LHDQ_6073	CPP	0.078	0.002	0.028	0.000	0.048
M-05-00	M-05-DWF-5/M-05-C-11	LHDQ_6074	CPP	0.486	0.033	0.007	0.000	0.446
M-05-00	M-05-DWF-5/M-05-C-11	LHDQ_6075	CPP	0.128	0.016	0.000	0.000	0.112
M-05-00	M-05-DWF-5/M-05-C-11	LHDQ_6076	CPP	0.088	0.014	0.000	0.000	0.074
M-05-00	M-05-DWF-4/M-05-C-6	LHDQ_6079	CPP	0.408	0.076	0.000	0.000	0.332
M-05-00	M-05-DWF-4/M-05-C-6	LHDQ_6080	CPP	0.397	0.075	0.000	0.000	0.322
M-05-00	M-05-DWF-2/M-05-C-2-B	LHDQ_6081	CPP	3.173	0.000	0.104	0.000	3.069
M-05-00	M-05-DWF-2/M-05-C-2-B	LHDQ_6082	CPP	0.077	0.000	0.052	0.000	0.025
M-05-00	M-05-DWF-2/M-05-C-2-B	LHDQ_6083	CPP	0.128	0.000	0.128	0.000	0.000
M-05-00	M-05-DWF-2/M-05-C-2-A	LHDQ_6084	CPP	0.051	0.000	0.051	0.000	0.000
M-05-00	M-05-DWF-2/M-05-C-4	LHDQ_6085	CPP	0.141	0.000	0.011	0.000	0.130
M-05-00	M-05-DWF-2/M-05-C-4	LHDQ_6086	CPP	0.108	0.000	0.021	0.000	0.087
M-05-00	M-05-DWF-3/M-05-C-10	LHDQ_7001	GR	0.163	0.000	0.159	0.000	0.004
M-05-00	M-05-DWF-1/M-05-C-1	LHDQ_7002	GR	0.221	0.125	0.083	0.000	0.013
M-05-00	M-05-DWF-1/M-05-C-1	LHDQ_7003	GR	0.379	0.000	0.000	0.000	0.379
M-05-00	M-05-DWF-3/M-05-C-10	LHDQ_7004	GR	0.274	0.000	0.274	0.000	0.000
M-05-00	M-05-DWF-3/M-05-C-10	LHDQ_7005	GR	1.192	0.000	1.192	0.000	0.000
M-05-00	M-05-DWF-1/M-05-C-1	LHDQ_7007	GR	1.919	0.000	0.002	0.000	1.917
M-05-00	M-05-DWF-3/M-05-C-10	LHDQ_7008	GR	0.301	0.000	0.232	0.000	0.069
M-05-00	M-05-DWF-2/M-05-C-4	LHDQ_7009	GR	0.523	0.000	0.486	0.000	0.037
M-05-00	M-05-DWF-3/M-05-C-10	LHDQ_7010	GR	0.204	0.204	0.000	0.000	0.000
M-05-00	M-05-DWF-2/M-05-C-4	LHDQ_7011	GR	0.494	0.479	0.010	0.000	0.005
M-05-00	M-05-DWF-3/M-05-C-10	LHDQ_7012	GR	0.185	0.000	0.001	0.000	0.184
M-05-00	M-05-DWF-6/M-05-C-13	LHDQ_7013	GR	0.606	0.600	0.000	0.000	0.006

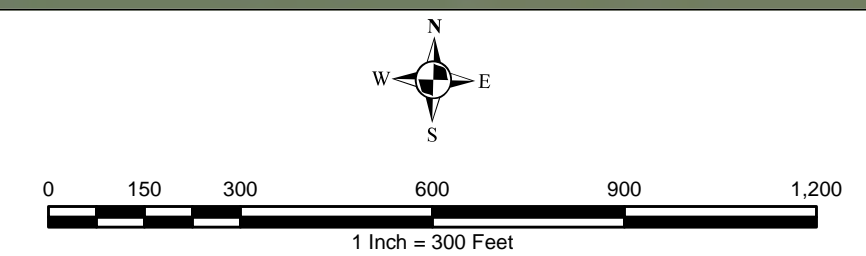
ALCOSAN POC	Model Subcatchment	Concept Comm / Inst Project UID	BMP Type	Concept Municipal Project Area (acres)	Taxable (acres)	Exempt (acres)	Provisionally Exempt (acres)	Public ROW (acres)
M-05-00	M-05-DWF-7/M-05-C-15	LHDQ_7014	GR	0.157	0.000	0.157	0.000	0.000
M-05-00	M-05-DWF-2/M-05-C-4	LHDQ_7015	GR	0.707	0.000	0.700	0.000	0.007
M-05-00	M-05-DWF-6/M-05-C-13	LHDQ_7016	GR	0.210	0.210	0.000	0.000	0.000
M-05-00	M-05-DWF-3/M-05-C-10	LHDQ_7017	GR	0.418	0.000	0.418	0.000	0.000
M-05-00	M-05-DWF-2/M-05-C-2-B	LHDQ_7018	GR	0.228	0.000	0.228	0.000	0.000
M-05-00	M-05-DWF-3/M-05-C-10	LHDQ_7019	GR	0.834	0.000	0.001	0.000	0.833
M-05-00	M-05-DWF-2/M-05-C-2-B	LHDQ_7020	GR	0.741	0.000	0.040	0.000	0.701
M-05-00	M-05-DWF-3/M-05-C-10	LHDQ_7021	GR	0.385	0.000	0.003	0.000	0.382
M-05-00	M-05-DWF-6/M-05-C-13	LHDQ_7022	GR	0.508	0.000	0.508	0.000	0.000
M-05-00	M-05-DWF-3/M-05-C-10	LHDQ_7023	GR	0.387	0.012	0.365	0.000	0.010
M-05-00	M-05-DWF-5/M-05-C-11	LHDQ_7024	GR	0.255	0.001	0.005	0.000	0.249
M-05-00	M-05-DWF-7/M-05-C-15	LHDQ_7025	GR	0.143	0.000	0.143	0.000	0.000
M-05-00	M-05-DWF-7/M-05-C-15	LHDQ_7026	GR	0.192	0.188	0.000	0.000	0.004
M-05-00	M-05-DWF-7/M-05-C-15	LHDQ_7027	GR	0.198	0.000	0.198	0.000	0.000
M-05-00	M-05-DWF-7/M-05-C-15	LHDQ_7028	GR	0.460	0.000	0.460	0.000	0.000
M-05-00	M-05-DWF-7/M-05-C-15	LHDQ_7029	GR	0.247	0.046	0.000	0.000	0.201
M-05-00	M-05-DWF-6/M-05-C-13	LHDQ_7030	GR	0.117	0.000	0.115	0.000	0.002
M-05-00	M-05-DWF-6/M-05-C-13	LHDQ_7031	GR	0.180	0.000	0.180	0.000	0.000
M-05-00	M-05-DWF-7/M-05-C-15	LHDQ_7032	GR	0.119	0.119	0.000	0.000	0.000
M-05-00	M-05-DWF-5/M-05-C-11	LHDQ_7033	GR	0.120	0.000	0.120	0.000	0.000
M-05-00	M-05-DWF-5/M-05-C-11	LHDQ_7034	GR	0.409	0.397	0.000	0.000	0.012
M-05-00	M-05-DWF-2/M-05-C-3	LHDQ_7035	GR	0.263	0.000	0.260	0.000	0.003
M-05-00	M-05-DWF-3/M-05-C-10	LHDQ_7036	GR	0.190	0.190	0.000	0.000	0.000
M-05-00	M-05-DWF-2/M-05-C-3	LHDQ_7037	GR	1.610	0.140	0.165	0.000	1.305
M-05-00	M-05-DWF-5/M-05-C-11	LHDQ_7038	GR	0.129	0.013	0.017	0.000	0.099
M-05-00	M-05-DWF-3/M-05-C-10	LHDQ_7039	GR	0.792	0.000	0.787	0.000	0.005
M-05-00	M-05-DWF-2/M-05-C-2-A	LHDQ_7040	GR	0.655	0.000	0.655	0.000	0.000
M-05-00	M-05-DWF-3/M-05-C-10	LHDQ_7041	GR	0.775	0.000	0.764	0.000	0.011
M-05-00	M-05-DWF-3/M-05-C-10	LHDQ_7042	GR	0.409	0.000	0.409	0.000	0.000
M-05-00	M-05-DWF-3/M-05-C-10	LHDQ_7043	GR	0.469	0.462	0.000	0.000	0.007

ALCOSAN POC	Model Subcatchment	Concept Comm / Inst Project UID	BMP Type	Concept Municipal Project Area (acres)	Taxable (acres)	Exempt (acres)	Provisionally Exempt (acres)	Public ROW (acres)
M-05-00	M-05-DWF-2/M-05-C-2-B	LHDQ_7044	GR	0.299	0.000	0.006	0.000	0.293
M-05-00	M-05-DWF-3/M-05-C-10	LHDQ_7045	GR	0.381	0.005	0.005	0.000	0.371
M-05-00	M-05-DWF-2/M-05-C-2-C	LHDQ_7046	GR	1.079	0.000	0.003	0.000	1.076
M-05-00	M-05-DWF-2/M-05-C-2-B	LHDQ_7047	GR	0.508	0.000	0.508	0.000	0.000
M-05-00	M-05-DWF-3/M-05-C-10	LHDQ_7048	GR	0.212	0.013	0.000	0.000	0.199
M-05-00	M-05-DWF-1/M-05-C-1	LHDQ_7049	GR	2.928	1.592	0.000	0.000	1.336
M-05-00	M-05-DWF-3/M-05-C-10	LHDQ_7050	GR	0.209	0.209	0.000	0.000	0.000
M-05-00	M-05-DWF-2/M-05-C-2-C	LHDQ_7051	GR	0.216	0.000	0.216	0.000	0.000
M-05-00	M-05-DWF-3/M-05-C-10	LHDQ_7052	GR	0.139	0.003	0.000	0.000	0.136
M-05-00	M-05-DWF-2/M-05-C-2-B	LHDQ_7053	GR	0.736	0.074	0.000	0.016	0.646
M-05-00	M-05-DWF-2/M-05-C-2-B	LHDQ_7054	GR	0.166	0.000	0.070	0.000	0.096
M-05-00	M-05-DWF-3/M-05-C-10	LHDQ_7055	GR	0.116	0.116	0.000	0.000	0.000
M-05-00	M-05-DWF-2/M-05-C-2-A	LHDQ_7056	GR	0.183	0.000	0.183	0.000	0.000
M-05-00	M-05-DWF-2/M-05-C-2-A	LHDQ_7057	GR	0.224	0.001	0.000	0.000	0.223
M-05-00	M-05-DWF-3/M-05-C-10	LHDQ_7058	GR	0.161	0.000	0.159	0.000	0.002
M-05-00	M-05-DWF-2/M-05-C-2-C	LHDQ_7059	GR	0.315	0.000	0.075	0.000	0.240
M-05-00	M-05-DWF-3/M-05-C-10	LHDQ_7060	GR	0.122	0.004	0.118	0.000	0.000
M-05-00	M-05-DWF-3/M-05-C-10	LHDQ_7061	GR	0.249	0.000	0.249	0.000	0.000
M-05-00	M-05-DWF-3/M-05-C-10	LHDQ_7062	GR	0.354	0.299	0.000	0.000	0.055
M-05-00	M-05-DWF-2/M-05-C-2-A	LHDQ_7063	GR	0.195	0.195	0.000	0.000	0.000
M-05-00	M-05-DWF-3/M-05-C-10	LHDQ_7064	GR	0.800	0.528	0.000	0.000	0.272
M-05-00	M-05-DWF-1/M-05-C-1	LHDQ_7065	GR	0.150	0.056	0.000	0.000	0.094
M-05-00	M-05-DWF-2/M-05-C-2-A	LHDQ_7066	GR	0.341	0.012	0.328	0.000	0.001
M-05-00	M-05-DWF-3/M-05-C-10	LHDQ_7067	GR	0.418	0.001	0.417	0.000	0.000
M-05-00	M-05-DWF-6/M-05-C-13	LHDQ_7068	GR	0.737	0.000	0.737	0.000	0.000
M-05-00	M-05-DWF-3/M-05-C-10	LHDQ_7069	GR	0.182	0.000	0.181	0.000	0.001
M-05-00	M-05-DWF-3/M-05-C-10	LHDQ_7070	GR	0.447	0.000	0.447	0.000	0.000
M-05-00	M-05-DWF-3/M-05-C-10	LHDQ_7071	GR	0.426	0.417	0.008	0.000	0.001
M-05-00	M-05-DWF-9/M-05-C-8	LHDQ_8002	PP	0.854	0.000	0.000	0.000	0.854
M-05-00	M-05-DWF-6/M-05-C-13	LHDQ_8003	PP	2.221	0.003	0.002	0.000	2.216

ALCOSAN POC	Model Subcatchment	Concept Comm / Inst Project UID	BMP Type	Concept Municipal Project Area (acres)	Taxable (acres)	Exempt (acres)	Provisionally Exempt (acres)	Public ROW (acres)
M-05-00	M-05-DWF-7/M-05-C-15	LHDQ_8004	PP	0.474	0.000	0.000	0.000	0.474
M-05-00	M-05-DWF-1/M-05-C-1	LHDQ_8006	PP	1.434	0.018	0.053	0.000	1.363
M-05-00	M-05-DWF-2/M-05-C-4	LHDQ_8007	PP	0.845	0.000	0.000	0.000	0.845
M-05-00	M-05-DWF-2/M-05-C-5-A	LHDQ_8009	PP	1.334	0.004	0.000	0.000	1.330
M-05-00	M-05-DWF-2/M-05-C-5-A	LHDQ_8010	PP	0.411	0.001	0.002	0.000	0.408
M-05-00	M-05-DWF-2/M-05-C-3	LHDQ_8011	PP	0.385	0.008	0.018	0.000	0.359
M-05-00	M-05-DWF-9/M-05-C-9-A	LHDQ_8012	PP	0.330	0.000	0.000	0.000	0.330
M-05-00	M-05-DWF-6/M-05-C-13	LHDQ_8014	PP	0.979	0.000	0.000	0.000	0.979
M-05-00	M-05-DWF-3/M-05-C-10	LHDQ_8015	PP	2.672	0.001	0.001	0.000	2.670
M-05-00	M-05-DWF-9/M-05-C-14	LHDQ_8016	PP	0.164	0.000	0.000	0.000	0.164
M-05-00	M-05-DWF-5/M-05-C-11	LHDQ_8017	PP	1.568	0.000	0.000	0.000	1.568
M-05-00	M-05-DWF-5/M-05-C-12	LHDQ_8018	PP	0.072	0.000	0.000	0.000	0.072
M-05-00	M-05-DWF-4/M-05-C-6	LHDQ_8019	PP	0.712	0.000	0.000	0.000	0.712
M-05-00	M-05-DWF-3/M-05-C-10	LHDQ_8020	PP	3.057	0.000	0.047	0.000	3.010



- ★ ALCOSAN Structures
- Special Case
- State Roads
- Concept Commercial / Institutional Permeable Pavement Projects
- Combined Sewer Subcatchment
- ALCOSAN Shallow-Cut Interceptor
- Concept Green Roof Projects
- Municipal Boundaries
- ALCOSAN Deep Tunnel Interceptor



ALCOSAN GSI Project
 Lower Hill / Duquesne (M-05)
 Concept Commercial / Institutional,
 Green Roof, and Special Case GSI Projects

Sources: Esri, Imagery, USGS, USGS, AEC, Geospatial, ArcGIS, IGN, IGN, IGN and the GIS User Community