

5.11 Study Area 11 – Four Mile Run

These findings apply to ALCOSAN Point of Connection M-29, which includes combined sewer systems in the City of Pittsburgh.

Four Mile Run - BMP GIS Features

The SUSTAIN BMP siting tool analysis resulted in identification of a total of 12,578 BMP GIS Features covering 727 acres, which consisted of the following:

Table 5.11-1 - TOTAL SUSTAIN BMP Features Output

SUSTAIN BMP Feature Type	Number of Features	Area of BMP Features (Acres)
Permeable Pavement	3,471	161
Bioretention	3,185	189
Infiltration Basin/Trenches	1,661	145
Vegetated Filter Strips	1,559	147
Grass Swales	2,599	83
Constructed Wetlands	103	2

Locations of all identified BMP GIS features are presented on the SUSTAIN BMP Features Figure.

Four Mile Run - Concept Municipal GSI Projects

Based on the BMP features, 556 concept Municipal GSI Projects were identified covering 64 total acres with a corresponding drainage area delineation of 724 total acres and consisted of the following:

Table 5.11-2 - Summary of Identified Concept Municipal GSI Projects

Concept GSI Technology	Number of Projects	GSI Project Area (Acres)	Project Drainage Area (Acres)
Permeable Pavement	166	53	479
Bioretention	380	10	234
Infiltration Basin/Trenches	9	1	9
Vegetated Filter Strips	1	< 1	2
Grass Swales	0	0	0
Constructed Wetlands	0	0	0

Project statistics including ALCOSAN POC, model subcatchment, BMP type, project area, area of project inside and outside of the public right-of-way, tributary drainage area, and tributary impervious drainage area are provided in the Concept Municipal Projects Table. Locations of all identified Concept Municipal GSI projects are presented in the Concept Municipal GSI Projects Figure (1) and the corresponding delineated tributary drainage areas are presented by BMP in the Individual Project Drainage Area Figures (4).

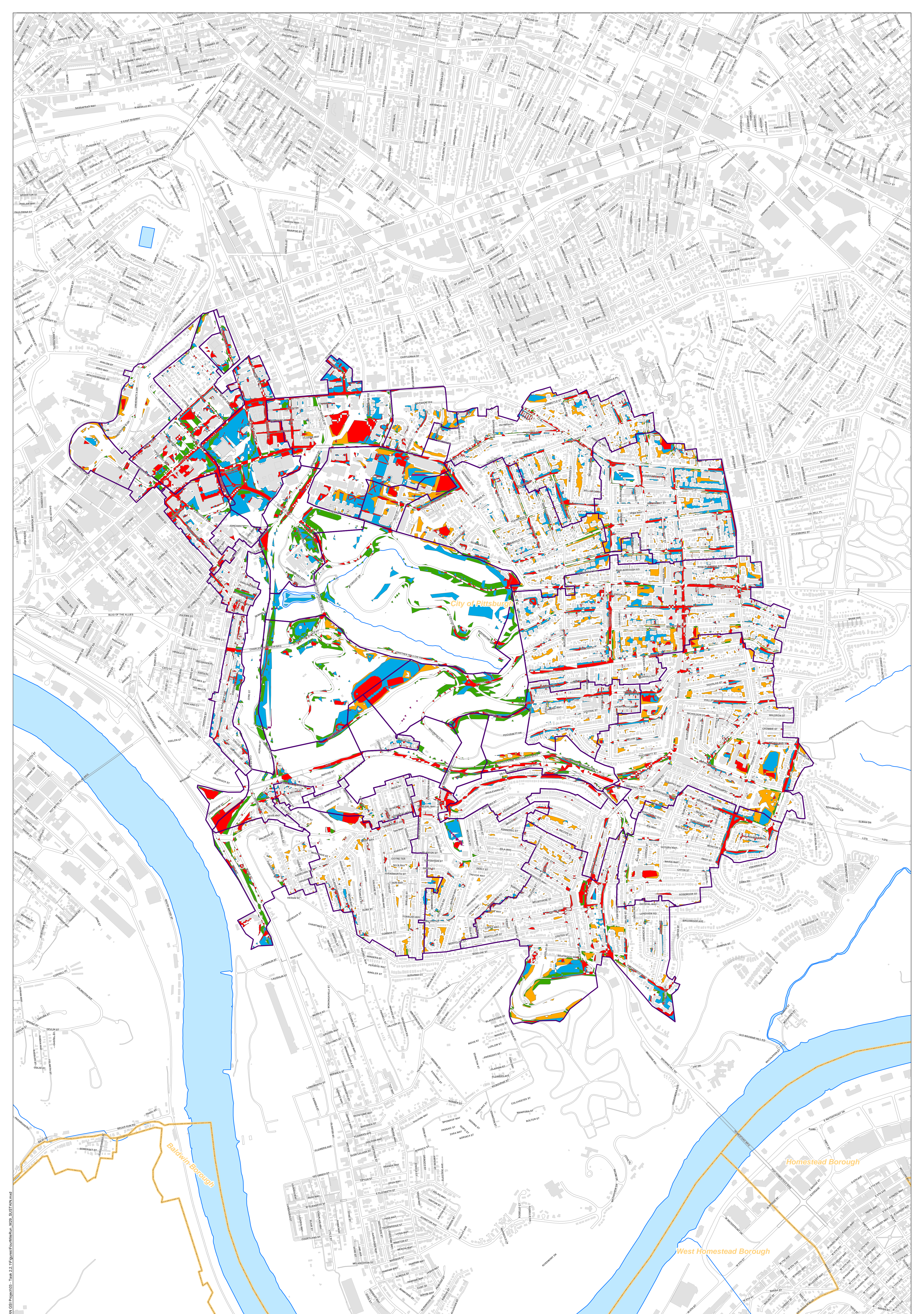
Four Mile Run - Concept Commercial/Institutional and Special Case GSI Projects

Based on the BMP features, 368 concept Commercial/Institutional and Special Case GSI Projects were identified covering 177 total acres and consisted of the following:

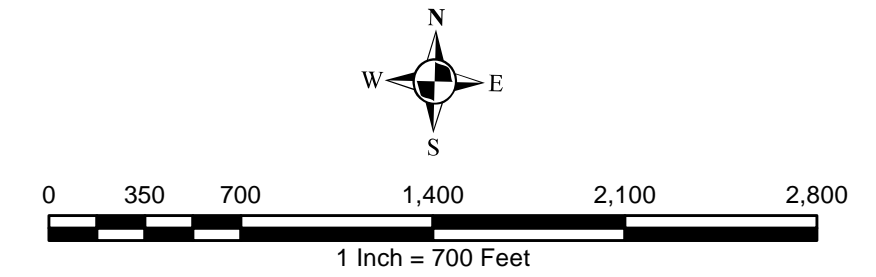
Table 5.11-3 - Summary of Identified Concept Commercial/Institutional and Special Case GSI Projects

Concept GSI Technology or Special Case Project Category	Number of Projects	GSI Project Area (Acres)
Commercial/Institutional Permeable Pavement	102	36
Commercial/Institutional Green Roofs	187	74
State Route Permeable Pavement	79	67
Busway Permeable Pavement	0	0
Busway Bioretention	0	0

Project statistics including ALCOSAN POC, model subcatchment, BMP type, project area, area of project taxable, exempt, provisionally exempt and in the public right-of-way are provided in Concept Commercial / Institutional GSI Projects Table. Locations of all identified Concept Commercial / Institutional GSI projects are presented in the Concept Commercial / Institutional GSI Projects Figure (1).



- Permeable Pavement
- Vegetated Filter Strips
- Combined Sewer Subcatchment
- Bioretention
- Grass Swales
- Municipal Boundaries
- Infiltration Basin / Trench
- Constructed Wetlands



ALCOSAN GSI Project
Four Mile Run M-29
SUSTAIN BMP Features

P:\Info\343434\ALCOSAN GSI Project\03 - Task 2.1\Figures\FourMileRun_M29_SUSTAIN.mxd

Four Mile Run Concept Municipal Projects

June 2, 2014

Revised October 7, 2014

*Note: The drainage area presented in this table is representative of the individual drainage area tributary to each concept municipal project without any revisions to account for overlap, without engineering judgment revisions applied, and without the drainage areas being clipped to their corresponding model subcatchments.

ALCOSAN POC	Model Subcatchment	Concept Municipal Project UID	BMP Type	Concept Municipal Project Area (acres)	Public ROW or Parcel		Concept Municipal Project Individual Drainage Area (acres)*	Concept Municipal Project Individual Drainage Area (acres)*
					Area of Municipal Project in Public ROW (acres)	Area of Municipal Project outside of Public ROW (acres)		
M-29-00	M-29-DWF-19/M-29-C-6-A	FOUR_1	PP	0.489	0.489	0.000	3.432	1.201
M-29-00	M-29-DWF-19/M-29-C-6-A	FOUR_2	PP	0.093	0.093	0.000	1.963	0.764
M-29-00	M-29-DWF-19/M-29-C-6-A	FOUR_3	PP	0.292	0.292	0.000	1.027	0.482
M-29-00	M-29-DWF-19/M-29-C-6-A	FOUR_4	PP	0.087	0.060	0.027	1.818	0.530
M-29-00	M-29-DWF-19/M-29-C-6-A	FOUR_5	PP	0.197	0.197	0.000	1.290	0.416
M-29-00	M-29-DWF-19/M-29-C-6-A	FOUR_6	PP	0.447	0.447	0.000	7.128	2.069
M-29-00	M-29-DWF-19/M-29-C-6-A	FOUR_7	PP	0.584	0.584	0.000	1.885	0.840
M-29-00	M-29-DWF-19/M-29-C-6-A	FOUR_8	PP	0.362	0.362	0.000	2.566	0.760
M-29-00	M-29-DWF-19/M-29-C-6-A	FOUR_9	PP	0.358	0.358	0.000	0.525	0.371
M-29-00	M-29-DWF-19/M-29-C-6-A	FOUR_10	PP	0.087	0.087	0.000	0.262	0.160
M-29-00	M-29-DWF-19/M-29-C-6-A	FOUR_11	PP	0.320	0.318	0.002	10.507	2.714
M-29-00	M-29-DWF-19/M-29-C-6-A	FOUR_12	PP	0.080	0.080	0.000	16.348	5.520
M-29-00	M-29-DWF-19/M-29-C-6-A	FOUR_13	PP	0.163	0.163	0.000	0.535	0.196
M-29-00	M-29-DWF-19/M-29-C-6-A	FOUR_14	PP	0.156	0.156	0.000	0.275	0.163
M-29-00	M-29-DWF-10/M-29-C-17-B	FOUR_15	PP	0.064	0.064	0.000	0.177	0.081
M-29-00	M-29-DWF-10/M-29-C-17-B	FOUR_16	PP	0.407	0.407	0.000	1.010	0.475
M-29-00	M-29-DWF-10/M-29-C-17-B	FOUR_17	PP	0.439	0.439	0.000	1.567	0.601
M-29-00	M-29-DWF-10/M-29-C-17-B	FOUR_18	PP	0.049	0.049	0.000	2.089	0.872
M-29-00	M-29-DWF-10/M-29-C-17-B	FOUR_19	PP	0.400	0.400	0.000	6.324	2.485
M-29-00	M-29-DWF-10/M-29-C-17-B	FOUR_20	PP	0.375	0.375	0.000	9.782	4.027
M-29-00	M-29-DWF-10/M-29-C-17-B	FOUR_21	PP	0.221	0.221	0.000	0.937	0.391
M-29-00	M-29-DWF-10/M-29-C-17-B	FOUR_22	PP	0.167	0.167	0.000	0.887	0.326
M-29-00	M-29-DWF-10/M-29-C-17-B	FOUR_23	PP	0.136	0.136	0.000	0.870	0.394
M-29-00	M-29-DWF-10/M-29-C-17-B	FOUR_24	PP	0.634	0.634	0.000	4.039	1.227
M-29-00	M-29-DWF-10/M-29-C-17-B	FOUR_25	PP	0.493	0.493	0.000	8.432	3.911
M-29-00	M-29-DWF-10/M-29-C-17-B	FOUR_26	PP	0.098	0.098	0.000	1.452	0.551
M-29-00	M-29-DWF-10/M-29-C-17-A	FOUR_27	PP	0.397	0.397	0.000	1.546	0.527
M-29-00	M-29-DWF-10/M-29-C-17-A	FOUR_28	PP	0.077	0.077	0.000	1.416	0.335
M-29-00	M-29-DWF-10/M-29-C-17-A	FOUR_29	PP	0.030	0.030	0.000	0.067	0.044
M-29-00	M-29-DWF-10/M-29-C-17-A	FOUR_30	PP	0.050	0.000	0.050	0.253	0.058
M-29-00	M-29-DWF-10/M-29-C-17-A	FOUR_31	PP	0.507	0.507	0.000	4.432	1.661

ALCOSAN POC	Model Subcatchment	Concept Municipal Project UID	BMP Type	Concept Municipal Project Area (acres)	Public ROW or Parcel		Concept Municipal Project Individual Drainage Area (acres)*	Concept Municipal Project Impervious Drainage Area (acres)*
					Area of Municipal Project in Public ROW (acres)	Area of Municipal Project outside of Public ROW (acres)		
M-29-00	M-29-DWF-10/M-29-C-17-A	FOUR_32	PP	0.189	0.189	0.000	8.794	2.737
M-29-00	M-29-DWF-10/M-29-C-17-A	FOUR_33	PP	0.470	0.470	0.000	2.609	1.001
M-29-00	M-29-DWF-10/M-29-C-17-A	FOUR_34	PP	0.950	0.950	0.000	3.665	1.423
M-29-00	M-29-DWF-10/M-29-C-17-A	FOUR_35	PP	0.090	0.089	0.001	0.569	0.196
M-29-00	M-29-DWF-9/M-29-C-19-A	FOUR_36	PP	0.122	0.114	0.008	0.288	0.178
M-29-00	M-29-DWF-9/M-29-C-19-A	FOUR_37	PP	0.274	0.216	0.058	1.036	0.444
M-29-00	M-29-DWF-9/M-29-C-19-A	FOUR_38	PP	0.393	0.393	0.000	1.162	0.425
M-29-00	M-29-DWF-9/M-29-C-19-A	FOUR_39	PP	0.347	0.347	0.000	1.741	0.557
M-29-00	M-29-DWF-9/M-29-C-19-A	FOUR_40	PP	0.050	0.050	0.000	0.177	0.072
M-29-00	M-29-DWF-9/M-29-C-19-A	FOUR_41	PP	0.205	0.205	0.000	1.822	0.798
M-29-00	M-29-DWF-9/M-29-C-19-A	FOUR_42	PP	0.285	0.285	0.000	1.519	0.551
M-29-00	M-29-DWF-9/M-29-C-19-A	FOUR_43	PP	1.109	1.109	0.000	7.800	2.852
M-29-00	M-29-DWF-9/M-29-C-19-A	FOUR_44	PP	0.247	0.247	0.000	1.470	0.464
M-29-00	M-29-DWF-9/M-29-C-19-A	FOUR_45	PP	0.067	0.067	0.000	0.259	0.120
M-29-00	M-29-DWF-9/M-29-C-19-A	FOUR_46	PP	0.543	0.543	0.000	2.345	0.765
M-29-00	M-29-DWF-9/M-29-C-19-A	FOUR_47	PP	0.148	0.148	0.000	4.217	1.180
M-29-00	M-29-DWF-9/M-29-C-19-A	FOUR_48	PP	0.366	0.366	0.000	3.310	1.050
M-29-00	M-29-DWF-9/M-29-C-19-A	FOUR_49	PP	0.915	0.915	0.000	9.443	3.511
M-29-00	M-29-DWF-9/M-29-C-19-B	FOUR_50	PP	0.127	0.127	0.000	1.936	1.151
M-29-00	M-29-DWF-21/M-29-S-24-A	FOUR_51	PP	0.945	0.000	0.945	6.603	1.872
M-29-00	M-29-DWF-21/M-29-S-24-A	FOUR_52	PP	0.414	0.000	0.414	2.683	0.511
M-29-00	M-29-DWF-19/M-29-S-6-B	FOUR_53	PP	0.467	0.000	0.467	5.707	1.171
M-29-00	M-29-DWF-19/M-29-S-6-B	FOUR_54	PP	0.369	0.002	0.367	13.146	3.320
M-29-00	M-29-DWF-19/M-29-S-6-B	FOUR_55	PP	0.420	0.000	0.420	4.394	0.974
M-29-00	M-29-DWF-4/M-29-S-28	FOUR_56	PP	0.173	0.173	0.000	6.401	3.013
M-29-00	M-29-DWF-8/M-29-C-18-A	FOUR_57	PP	0.511	0.511	0.000	3.639	1.600
M-29-00	M-29-DWF-8/M-29-C-18-A	FOUR_58	PP	0.141	0.141	0.000	2.069	1.320
M-29-00	M-29-DWF-8/M-29-C-18-A	FOUR_59	PP	0.082	0.082	0.000	0.564	0.391
M-29-00	M-29-DWF-8/M-29-C-18-A	FOUR_60	PP	0.216	0.216	0.000	0.761	0.447
M-29-00	M-29-DWF-8/M-29-C-18-A	FOUR_61	PP	0.082	0.082	0.000	0.380	0.323
M-29-00	M-29-DWF-8/M-29-C-18-A	FOUR_62	PP	0.088	0.088	0.000	0.256	0.182
M-29-00	M-29-DWF-8/M-29-C-18-B	FOUR_63	PP	0.201	0.193	0.008	2.039	0.605
M-29-00	M-29-DWF-23/M-29-C-21	FOUR_64	PP	0.628	0.628	0.000	8.128	5.163
M-29-00	M-29-DWF-23/M-29-C-21	FOUR_65	PP	0.821	0.821	0.000	2.950	2.271
M-29-00	M-29-DWF-23/M-29-C-21	FOUR_66	PP	0.605	0.605	0.000	5.607	3.006
M-29-00	M-29-DWF-23/M-29-C-21	FOUR_67	PP	0.354	0.348	0.006	2.049	1.517
M-29-00	M-29-DWF-6/M-29-C-22-A	FOUR_68	PP	0.104	0.104	0.000	1.172	0.889

ALCOSAN POC	Model Subcatchment	Concept Municipal Project UID	BMP Type	Concept Municipal Project Area (acres)	Public ROW or Parcel		Concept Municipal Project Individual Drainage Area (acres)*	Concept Municipal Project Individual Drainage Area (acres)*
					Area of Municipal Project in Public ROW (acres)	Area of Municipal Project outside of Public ROW (acres)		
M-29-00	M-29-DWF-6/M-29-C-22-A	FOUR_69	PP	0.164	0.164	0.000	3.113	0.705
M-29-00	M-29-DWF-6/M-29-C-22-A	FOUR_70	PP	0.073	0.073	0.000	7.558	4.049
M-29-00	M-29-DWF-6/M-29-C-22-A	FOUR_71	PP	0.788	0.788	0.000	14.134	5.743
M-29-00	M-29-DWF-6/M-29-C-22-A	FOUR_72	PP	0.464	0.464	0.000	2.331	1.755
M-29-00	M-29-DWF-6/M-29-C-22-A	FOUR_73	PP	0.482	0.482	0.000	9.142	3.652
M-29-00	M-29-DWF-6/M-29-C-22-A	FOUR_74	PP	0.443	0.443	0.000	10.086	3.827
M-29-00	M-29-DWF-5/M-29-C-23-A	FOUR_75	PP	0.059	0.037	0.022	1.711	1.168
M-29-00	M-29-DWF-5/M-29-C-23-A	FOUR_76	PP	1.218	1.218	0.000	6.072	3.867
M-29-00	M-29-DWF-21/M-29-C-24-B	FOUR_77	PP	0.263	0.263	0.000	17.919	3.699
M-29-00	M-29-DWF-5/M-29-C-23-C	FOUR_78	PP	0.124	0.124	0.000	2.312	0.953
M-29-00	M-29-DWF-21/M-29-C-24-B	FOUR_79	PP	0.331	0.000	0.331	12.658	1.552
M-29-00	M-29-DWF-3/M-29-C-26	FOUR_80	PP	0.451	0.451	0.000	1.795	0.938
M-29-00	M-29-DWF-4/M-29-C-27	FOUR_81	PP	0.131	0.131	0.000	1.602	0.780
M-29-00	M-29-DWF-4/M-29-C-27	FOUR_82	PP	0.451	0.451	0.000	1.753	0.574
M-29-00	M-29-DWF-4/M-29-C-27	FOUR_83	PP	0.225	0.222	0.003	0.951	0.594
M-29-00	M-29-DWF-4/M-29-C-27	FOUR_84	PP	0.133	0.105	0.028	0.337	0.198
M-29-00	M-29-DWF-4/M-29-C-27	FOUR_85	PP	0.217	0.217	0.000	1.484	0.762
M-29-00	M-29-DWF-4/M-29-C-27	FOUR_86	PP	0.389	0.389	0.000	1.425	0.825
M-29-00	M-29-DWF-23/M-29-C-21	FOUR_87	PP	0.569	0.569	0.000	3.128	1.599
M-29-00	M-29-DWF-6/M-29-C-22-B	FOUR_88	PP	0.053	0.014	0.039	1.843	0.830
M-29-00	M-29-S-25	FOUR_89	PP	0.327	0.000	0.327	0.421	0.355
M-29-00	M-29-S-25	FOUR_90	PP	0.494	0.000	0.494	1.706	0.741
M-29-00	M-29-DWF-10/M-29-C-17-A	FOUR_91	PP	0.050	0.050	0.000	0.271	0.070
M-29-00	M-29-DWF-10/M-29-C-17-A	FOUR_92	PP	0.082	0.081	0.001	0.407	0.136
M-29-00	M-29-DWF-19/M-29-C-6-A	FOUR_93	PP	0.145	0.145	0.000	1.353	0.471
M-29-00	M-29-DWF-7/M-29-C-2	FOUR_94	PP	0.475	0.461	0.014	4.625	1.961
M-29-00	M-29-DWF-7/M-29-C-2	FOUR_95	PP	0.173	0.000	0.173	1.413	0.391
M-29-00	M-29-DWF-25/M-29-C-25	FOUR_96	PP	1.067	1.067	0.000	9.660	3.311
M-29-00	M-29-DWF-2/M-29-C-15	FOUR_97	PP	0.252	0.233	0.019	0.737	0.297
M-29-00	M-29-DWF-17/M-29-C-3	FOUR_98	PP	0.070	0.070	0.000	2.136	0.836
M-29-00	M-29-DWF-17/M-29-C-3	FOUR_99	PP	0.388	0.388	0.000	1.507	0.535
M-29-00	M-29-DWF-17/M-29-C-3	FOUR_100	PP	0.239	0.229	0.010	0.722	0.301
M-29-00	M-29-DWF-17/M-29-C-3	FOUR_101	PP	0.078	0.078	0.000	2.100	0.727
M-29-00	M-29-DWF-17/M-29-C-3	FOUR_102	PP	0.224	0.224	0.000	24.822	7.763
M-29-00	M-29-DWF-17/M-29-C-3	FOUR_103	PP	0.068	0.068	0.000	0.221	0.098
M-29-00	M-29-DWF-11/M-29-C-4	FOUR_104	PP	0.114	0.114	0.000	1.164	0.498
M-29-00	M-29-DWF-11/M-29-C-4	FOUR_105	PP	0.083	0.083	0.000	0.348	0.182

ALCOSAN POC	Model Subcatchment	Concept Municipal Project UID	BMP Type	Concept Municipal Project Area (acres)	Public ROW or Parcel		Concept Municipal Project Individual Drainage Area (acres)*	Concept Municipal Project Impervious Drainage Area (acres)*
					Area of Municipal Project in Public ROW (acres)	Area of Municipal Project outside of Public ROW (acres)		
M-29-00	M-29-DWF-11/M-29-C-4	FOUR_106	PP	0.193	0.193	0.000	0.826	0.480
M-29-00	M-29-DWF-20/M-29-C-14-B	FOUR_107	PP	0.276	0.276	0.000	2.922	1.399
M-29-00	M-29-DWF-16/M-29-C-13-A	FOUR_108	PP	0.115	0.110	0.005	3.376	1.040
M-29-00	M-29-DWF-20/M-29-C-14-B	FOUR_109	PP	0.081	0.081	0.000	2.998	0.854
M-29-00	M-29-DWF-20/M-29-C-14-B	FOUR_110	PP	0.111	0.111	0.000	0.366	0.146
M-29-00	M-29-DWF-13/M-29-C-8	FOUR_111	PP	0.102	0.102	0.000	0.757	0.305
M-29-00	M-29-DWF-13/M-29-C-8	FOUR_112	PP	0.148	0.146	0.002	0.489	0.378
M-29-00	M-29-DWF-20/M-29-C-14-B	FOUR_113	PP	0.222	0.222	0.000	0.926	0.357
M-29-00	M-29-DWF-20/M-29-C-14-B	FOUR_114	PP	0.091	0.091	0.000	4.566	1.377
M-29-00	M-29-DWF-20/M-29-C-14-B	FOUR_115	PP	0.352	0.352	0.000	0.668	0.421
M-29-00	M-29-DWF-13/M-29-C-8	FOUR_116	PP	0.151	0.151	0.000	1.291	0.410
M-29-00	M-29-DWF-13/M-29-C-8	FOUR_117	PP	0.090	0.090	0.000	3.593	1.396
M-29-00	M-29-DWF-13/M-29-C-8	FOUR_118	PP	0.283	0.283	0.000	0.540	0.332
M-29-00	M-29-DWF-13/M-29-C-8	FOUR_119	PP	0.109	0.109	0.000	0.180	0.131
M-29-00	M-29-DWF-13/M-29-C-8	FOUR_120	PP	0.163	0.159	0.004	0.282	0.171
M-29-00	M-29-DWF-13/M-29-C-8	FOUR_121	PP	0.405	0.398	0.007	2.543	1.025
M-29-00	M-29-DWF-13/M-29-C-8	FOUR_122	PP	0.841	0.832	0.009	2.871	1.553
M-29-00	M-29-DWF-13/M-29-C-8	FOUR_123	PP	0.255	0.255	0.000	1.698	0.423
M-29-00	M-29-DWF-13/M-29-C-8	FOUR_124	PP	0.184	0.184	0.000	0.199	0.170
M-29-00	M-29-DWF-16/M-29-C-7	FOUR_125	PP	0.102	0.102	0.000	1.348	0.356
M-29-00	M-29-DWF-16/M-29-C-7	FOUR_126	PP	1.176	1.176	0.000	3.498	1.778
M-29-00	M-29-DWF-14/M-29-C-9	FOUR_127	PP	1.350	1.350	0.000	2.365	1.518
M-29-00	M-29-DWF-14/M-29-C-9	FOUR_128	PP	0.179	0.179	0.000	0.445	0.222
M-29-00	M-29-DWF-14/M-29-C-9	FOUR_129	PP	0.370	0.370	0.000	1.310	0.568
M-29-00	M-29-DWF-14/M-29-C-9	FOUR_130	PP	0.108	0.108	0.000	1.631	0.780
M-29-00	M-29-DWF-15/M-29-C-10	FOUR_131	PP	0.354	0.354	0.000	1.080	0.566
M-29-00	M-29-DWF-15/M-29-C-10	FOUR_132	PP	0.056	0.056	0.000	1.734	0.788
M-29-00	M-29-DWF-15/M-29-C-10	FOUR_133	PP	0.321	0.321	0.000	6.167	2.912
M-29-00	M-29-DWF-15/M-29-C-10	FOUR_134	PP	0.881	0.881	0.000	3.054	1.485
M-29-00	M-29-DWF-15/M-29-C-10	FOUR_135	PP	0.305	0.305	0.000	1.149	0.450
M-29-00	M-29-DWF-15/M-29-C-10	FOUR_136	PP	0.095	0.095	0.000	1.466	0.737
M-29-00	M-29-DWF-15/M-29-C-10	FOUR_137	PP	0.157	0.157	0.000	0.169	0.147
M-29-00	M-29-DWF-15/M-29-C-10	FOUR_138	PP	0.352	0.352	0.000	1.691	0.775
M-29-00	M-29-DWF-15/M-29-C-10	FOUR_139	PP	0.605	0.605	0.000	1.291	0.798
M-29-00	M-29-DWF-15/M-29-C-10	FOUR_140	PP	0.523	0.523	0.000	1.440	0.710
M-29-00	M-29-DWF-12/M-29-C-12	FOUR_141	PP	0.272	0.260	0.012	0.841	0.428
M-29-00	M-29-DWF-12/M-29-C-12	FOUR_142	PP	0.203	0.050	0.153	0.302	0.222

ALCOSAN POC	Model Subcatchment	Concept Municipal Project UID	BMP Type	Concept Municipal Project Area (acres)	Public ROW or Parcel		Concept Municipal Project Individual Drainage Area (acres)*	Concept Municipal Project Impervious Drainage Area (acres)*
					Area of Municipal Project in Public ROW (acres)	Area of Municipal Project outside of Public ROW (acres)		
M-29-00	M-29-DWF-12/M-29-C-12	FOUR_143	PP	0.153	0.153	0.000	3.014	1.142
M-29-00	M-29-DWF-12/M-29-C-12	FOUR_144	PP	0.903	0.903	0.000	4.640	1.981
M-29-00	M-29-DWF-12/M-29-C-12	FOUR_145	PP	0.465	0.465	0.000	1.838	0.777
M-29-00	M-29-DWF-12/M-29-C-12	FOUR_146	PP	0.224	0.224	0.000	1.508	0.818
M-29-00	M-29-DWF-12/M-29-C-12	FOUR_147	PP	0.797	0.797	0.000	12.282	4.471
M-29-00	M-29-DWF-18/M-29-C-5	FOUR_148	PP	0.256	0.000	0.256	0.489	0.250
M-29-00	M-29-DWF-7/M-29-C-2	FOUR_149	PP	0.591	0.000	0.591	0.989	0.512
M-29-00	M-29-DWF-19/M-29-C-6-A	FOUR_150	PP	0.238	0.238	0.000	1.451	0.736
M-29-00	M-29-DWF-19/M-29-C-6-A	FOUR_151	PP	0.206	0.206	0.000	0.496	0.277
M-29-00	M-29-DWF-19/M-29-C-6-A	FOUR_152	PP	0.078	0.078	0.000	0.119	0.086
M-29-00	M-29-DWF-19/M-29-S-6-B	FOUR_153	PP	0.065	0.000	0.065	0.080	0.062
M-29-00	M-29-DWF-19/M-29-S-6-B	FOUR_154	PP	0.203	0.000	0.203	0.659	0.180
M-29-00	M-29-DWF-19/M-29-S-6-B	FOUR_155	PP	0.431	0.000	0.431	0.518	0.438
M-29-00	M-29-DWF-20/M-29-S-14-A	FOUR_156	PP	0.779	0.000	0.779	1.049	0.718
M-29-00	M-29-DWF-16/M-29-S-13-B	FOUR_157	PP	0.596	0.000	0.596	0.666	0.546
M-29-00	M-29-DWF-3/M-29-C-26	FOUR_158	PP	1.224	1.224	0.000	5.862	2.689
M-29-00	M-29-DWF-3/M-29-C-26	FOUR_159	PP	0.106	0.106	0.000	0.627	0.490
M-29-00	M-29-DWF-7/M-29-C-2	FOUR_160	PP	0.175	0.175	0.000	2.354	0.605
M-29-00	M-29-DWF-14/M-29-C-9	FOUR_161	PP	0.228	0.228	0.000	0.290	0.259
M-29-00	M-29-DWF-15/M-29-C-10	FOUR_162	PP	0.190	0.190	0.000	0.850	0.376
M-29-00	M-29-DWF-15/M-29-C-10	FOUR_163	PP	0.108	0.108	0.000	0.989	0.656
M-29-00	M-29-DWF-15/M-29-C-10	FOUR_164	PP	0.161	0.161	0.000	0.386	0.200
M-29-00	M-29-DWF-15/M-29-C-10	FOUR_165	PP	0.191	0.191	0.000	1.215	0.455
M-29-00	M-29-DWF-17/M-29-C-3	FOUR_166	PP	0.177	0.177	0.000	2.118	0.963
M-29-00	M-29-DWF-19/M-29-C-6-A	FOUR_1001	BR	0.029	0.029	0.000	3.460	1.259
M-29-00	M-29-DWF-19/M-29-C-6-A	FOUR_1002	BR	0.005	0.005	0.000	0.038	0.004
M-29-00	M-29-DWF-19/M-29-C-6-A	FOUR_1003	BR	0.012	0.007	0.005	0.028	0.002
M-29-00	M-29-DWF-19/M-29-C-6-A	FOUR_1004	BR	0.008	0.008	0.000	0.801	0.180
M-29-00	M-29-DWF-19/M-29-C-6-A	FOUR_1005	BR	0.008	0.008	0.000	0.017	0.001
M-29-00	M-29-DWF-19/M-29-C-6-A	FOUR_1006	BR	0.017	0.017	0.000	0.462	0.173
M-29-00	M-29-DWF-19/M-29-C-6-A	FOUR_1007	BR	0.015	0.015	0.000	0.241	0.094
M-29-00	M-29-DWF-19/M-29-C-6-A	FOUR_1008	BR	0.019	0.019	0.000	0.067	0.027
M-29-00	M-29-DWF-19/M-29-C-6-A	FOUR_1009	BR	0.008	0.004	0.004	0.010	0.000
M-29-00	M-29-DWF-19/M-29-C-6-A	FOUR_1010	BR	0.005	0.002	0.003	0.007	0.000
M-29-00	M-29-DWF-19/M-29-C-6-A	FOUR_1011	BR	0.045	0.022	0.023	0.152	0.008
M-29-00	M-29-DWF-19/M-29-C-6-A	FOUR_1012	BR	0.028	0.011	0.017	0.044	0.007
M-29-00	M-29-DWF-19/M-29-C-6-A	FOUR_1013	BR	0.006	0.003	0.003	0.007	0.000

ALCOSAN POC	Model Subcatchment	Concept Municipal Project UID	BMP Type	Concept Municipal Project Area (acres)	Public ROW or Parcel		Concept Municipal Project Individual Drainage Area (acres)*	Concept Municipal Project Impervious Drainage Area (acres)*
					Area of Municipal Project in Public ROW (acres)	Area of Municipal Project outside of Public ROW (acres)		
M-29-00	M-29-DWF-19/M-29-C-6-A	FOUR_1014	BR	0.007	0.004	0.003	0.011	0.000
M-29-00	M-29-DWF-19/M-29-C-6-A	FOUR_1015	BR	0.013	0.007	0.006	0.028	0.001
M-29-00	M-29-DWF-19/M-29-C-6-A	FOUR_1016	BR	0.020	0.017	0.003	2.804	1.136
M-29-00	M-29-DWF-19/M-29-C-6-A	FOUR_1017	BR	0.010	0.007	0.003	5.807	1.785
M-29-00	M-29-DWF-19/M-29-C-6-A	FOUR_1018	BR	0.008	0.007	0.001	0.961	0.209
M-29-00	M-29-DWF-19/M-29-C-6-A	FOUR_1019	BR	0.027	0.024	0.003	0.734	0.385
M-29-00	M-29-DWF-19/M-29-C-6-A	FOUR_1020	BR	0.015	0.013	0.002	0.052	0.038
M-29-00	M-29-DWF-19/M-29-C-6-A	FOUR_1021	BR	0.010	0.010	0.000	0.294	0.114
M-29-00	M-29-DWF-19/M-29-C-6-A	FOUR_1022	BR	0.013	0.013	0.000	0.053	0.006
M-29-00	M-29-DWF-19/M-29-C-6-A	FOUR_1023	BR	0.016	0.010	0.006	0.104	0.009
M-29-00	M-29-DWF-19/M-29-C-6-A	FOUR_1024	BR	0.010	0.010	0.000	0.192	0.146
M-29-00	M-29-DWF-19/M-29-C-6-A	FOUR_1025	BR	0.024	0.010	0.014	0.063	0.017
M-29-00	M-29-DWF-19/M-29-C-6-A	FOUR_1026	BR	0.004	0.004	0.000	0.029	0.006
M-29-00	M-29-DWF-10/M-29-C-17-B	FOUR_1027	BR	0.007	0.007	0.000	0.023	0.001
M-29-00	M-29-DWF-10/M-29-C-17-B	FOUR_1028	BR	0.026	0.020	0.006	0.249	0.103
M-29-00	M-29-DWF-10/M-29-C-17-B	FOUR_1029	BR	0.014	0.009	0.005	0.018	0.004
M-29-00	M-29-DWF-10/M-29-C-17-B	FOUR_1030	BR	0.042	0.030	0.012	1.167	0.436
M-29-00	M-29-DWF-10/M-29-C-17-B	FOUR_1031	BR	0.042	0.031	0.011	0.272	0.071
M-29-00	M-29-DWF-10/M-29-C-17-B	FOUR_1032	BR	0.014	0.011	0.003	0.087	0.007
M-29-00	M-29-DWF-10/M-29-C-17-B	FOUR_1033	BR	0.015	0.013	0.002	0.324	0.143
M-29-00	M-29-DWF-10/M-29-C-17-B	FOUR_1034	BR	0.005	0.004	0.001	0.038	0.005
M-29-00	M-29-DWF-10/M-29-C-17-B	FOUR_1035	BR	0.021	0.021	0.000	2.378	0.920
M-29-00	M-29-DWF-10/M-29-C-17-B	FOUR_1036	BR	0.003	0.003	0.000	4.093	1.598
M-29-00	M-29-DWF-10/M-29-C-17-B	FOUR_1037	BR	0.015	0.013	0.002	2.317	0.889
M-29-00	M-29-DWF-10/M-29-C-17-B	FOUR_1038	BR	0.008	0.008	0.000	2.199	0.844
M-29-00	M-29-DWF-10/M-29-C-17-B	FOUR_1039	BR	0.005	0.005	0.000	0.028	0.014
M-29-00	M-29-DWF-10/M-29-C-17-B	FOUR_1040	BR	0.011	0.009	0.002	0.027	0.011
M-29-00	M-29-DWF-10/M-29-C-17-B	FOUR_1041	BR	0.007	0.007	0.000	0.025	0.002
M-29-00	M-29-DWF-10/M-29-C-17-B	FOUR_1042	BR	0.006	0.006	0.000	0.121	0.020
M-29-00	M-29-DWF-10/M-29-C-17-B	FOUR_1043	BR	0.007	0.007	0.000	0.095	0.014
M-29-00	M-29-DWF-10/M-29-C-17-B	FOUR_1044	BR	0.004	0.004	0.000	0.012	0.003
M-29-00	M-29-DWF-10/M-29-C-17-B	FOUR_1045	BR	0.005	0.005	0.000	0.025	0.009
M-29-00	M-29-DWF-10/M-29-C-17-B	FOUR_1046	BR	0.007	0.005	0.002	0.137	0.068
M-29-00	M-29-DWF-10/M-29-C-17-B	FOUR_1047	BR	0.018	0.015	0.003	0.039	0.012
M-29-00	M-29-DWF-10/M-29-C-17-B	FOUR_1048	BR	0.019	0.019	0.000	0.049	0.015
M-29-00	M-29-DWF-10/M-29-C-17-B	FOUR_1049	BR	0.073	0.068	0.005	1.091	0.322
M-29-00	M-29-DWF-10/M-29-C-17-B	FOUR_1050	BR	0.009	0.004	0.005	0.024	0.003

ALCOSAN POC	Model Subcatchment	Concept Municipal Project UID	BMP Type	Concept Municipal Project Area (acres)	Public ROW or Parcel		Concept Municipal Project Individual Drainage Area (acres)*	Concept Municipal Project Individual Drainage Area (acres)*
					Area of Municipal Project in Public ROW (acres)	Area of Municipal Project outside of Public ROW (acres)		
M-29-00	M-29-DWF-10/M-29-C-17-B	FOUR_1051	BR	0.035	0.018	0.017	0.073	0.033
M-29-00	M-29-DWF-10/M-29-C-17-B	FOUR_1052	BR	0.018	0.018	0.000	0.041	0.007
M-29-00	M-29-DWF-10/M-29-C-17-B	FOUR_1053	BR	0.016	0.016	0.000	0.036	0.007
M-29-00	M-29-DWF-10/M-29-C-17-A	FOUR_1054	BR	0.005	0.005	0.000	0.008	0.006
M-29-00	M-29-DWF-10/M-29-C-17-A	FOUR_1055	BR	0.009	0.009	0.000	0.093	0.015
M-29-00	M-29-DWF-10/M-29-C-17-A	FOUR_1056	BR	0.006	0.006	0.000	0.501	0.181
M-29-00	M-29-DWF-10/M-29-C-17-A	FOUR_1057	BR	0.015	0.014	0.001	12.238	3.533
M-29-00	M-29-DWF-10/M-29-C-17-A	FOUR_1058	BR	0.008	0.008	0.000	0.082	0.042
M-29-00	M-29-DWF-10/M-29-C-17-A	FOUR_1059	BR	0.015	0.015	0.000	0.028	0.009
M-29-00	M-29-DWF-10/M-29-C-17-A	FOUR_1060	BR	0.043	0.029	0.014	0.092	0.008
M-29-00	M-29-DWF-10/M-29-C-17-A	FOUR_1061	BR	0.012	0.011	0.001	0.911	0.388
M-29-00	M-29-DWF-10/M-29-C-17-A	FOUR_1062	BR	0.008	0.008	0.000	0.315	0.138
M-29-00	M-29-DWF-10/M-29-C-17-A	FOUR_1063	BR	0.012	0.010	0.002	0.030	0.008
M-29-00	M-29-DWF-10/M-29-C-17-A	FOUR_1064	BR	0.009	0.009	0.000	0.235	0.058
M-29-00	M-29-DWF-10/M-29-C-17-A	FOUR_1065	BR	0.016	0.016	0.000	0.026	0.000
M-29-00	M-29-DWF-10/M-29-C-17-A	FOUR_1066	BR	0.005	0.005	0.000	0.010	0.001
M-29-00	M-29-DWF-10/M-29-C-17-A	FOUR_1067	BR	0.007	0.007	0.000	0.009	0.001
M-29-00	M-29-DWF-10/M-29-C-17-A	FOUR_1068	BR	0.006	0.006	0.000	0.335	0.105
M-29-00	M-29-DWF-10/M-29-C-17-A	FOUR_1069	BR	0.004	0.004	0.000	0.006	0.000
M-29-00	M-29-DWF-10/M-29-C-17-A	FOUR_1070	BR	0.007	0.005	0.002	0.008	0.001
M-29-00	M-29-DWF-9/M-29-C-19-A	FOUR_1071	BR	0.033	0.000	0.033	0.096	0.028
M-29-00	M-29-DWF-9/M-29-C-19-A	FOUR_1072	BR	0.016	0.016	0.000	0.244	0.071
M-29-00	M-29-DWF-9/M-29-C-19-A	FOUR_1073	BR	0.008	0.008	0.000	0.091	0.041
M-29-00	M-29-DWF-9/M-29-C-19-A	FOUR_1074	BR	0.007	0.007	0.000	1.980	0.819
M-29-00	M-29-DWF-9/M-29-C-19-A	FOUR_1075	BR	0.068	0.058	0.010	0.513	0.192
M-29-00	M-29-DWF-9/M-29-C-19-A	FOUR_1076	BR	0.019	0.014	0.005	0.236	0.035
M-29-00	M-29-DWF-9/M-29-C-19-A	FOUR_1077	BR	0.009	0.009	0.000	0.020	0.013
M-29-00	M-29-DWF-9/M-29-C-19-A	FOUR_1078	BR	0.015	0.015	0.000	0.050	0.016
M-29-00	M-29-DWF-9/M-29-C-19-A	FOUR_1079	BR	0.022	0.022	0.000	2.047	0.632
M-29-00	M-29-DWF-9/M-29-C-19-A	FOUR_1080	BR	0.014	0.014	0.000	1.445	0.477
M-29-00	M-29-DWF-9/M-29-C-19-A	FOUR_1081	BR	0.016	0.016	0.000	0.036	0.020
M-29-00	M-29-DWF-9/M-29-C-19-A	FOUR_1082	BR	0.022	0.020	0.002	0.151	0.059
M-29-00	M-29-DWF-9/M-29-C-19-A	FOUR_1083	BR	0.016	0.016	0.000	0.041	0.016
M-29-00	M-29-DWF-9/M-29-C-19-A	FOUR_1084	BR	0.012	0.012	0.000	0.070	0.030
M-29-00	M-29-DWF-9/M-29-C-19-A	FOUR_1085	BR	0.015	0.015	0.000	0.215	0.074
M-29-00	M-29-DWF-9/M-29-C-19-A	FOUR_1086	BR	0.009	0.009	0.000	0.242	0.086
M-29-00	M-29-DWF-9/M-29-C-19-A	FOUR_1087	BR	0.040	0.040	0.000	0.098	0.047

ALCOSAN POC	Model Subcatchment	Concept Municipal Project UID	BMP Type	Concept Municipal Project Area (acres)	Public ROW or Parcel		Concept Municipal Project Individual Drainage Area (acres)*	Concept Municipal Project Individual Drainage Area (acres)*
					Area of Municipal Project in Public ROW (acres)	Area of Municipal Project outside of Public ROW (acres)		
M-29-00	M-29-DWF-9/M-29-C-19-A	FOUR_1088	BR	0.021	0.021	0.000	0.087	0.036
M-29-00	M-29-DWF-9/M-29-C-19-A	FOUR_1089	BR	0.008	0.008	0.000	3.103	0.961
M-29-00	M-29-DWF-9/M-29-C-19-A	FOUR_1090	BR	0.007	0.007	0.000	23.223	7.438
M-29-00	M-29-DWF-9/M-29-C-19-A	FOUR_1091	BR	0.021	0.021	0.000	0.857	0.348
M-29-00	M-29-DWF-9/M-29-C-19-A	FOUR_1092	BR	0.010	0.009	0.001	1.086	0.309
M-29-00	M-29-DWF-21/M-29-S-24-A	FOUR_1093	BR	0.024	0.000	0.024	0.065	0.032
M-29-00	M-29-DWF-4/M-29-S-28	FOUR_1094	BR	0.054	0.014	0.040	5.775	2.918
M-29-00	M-29-DWF-4/M-29-S-28	FOUR_1095	BR	0.015	0.000	0.015	1.663	0.254
M-29-00	M-29-DWF-8/M-29-C-18-A	FOUR_1096	BR	0.053	0.053	0.000	0.476	0.196
M-29-00	M-29-DWF-8/M-29-C-18-A	FOUR_1097	BR	0.151	0.151	0.000	1.078	0.308
M-29-00	M-29-DWF-8/M-29-C-18-A	FOUR_1098	BR	0.044	0.044	0.000	2.032	0.827
M-29-00	M-29-DWF-8/M-29-C-18-A	FOUR_1099	BR	0.024	0.024	0.000	0.851	0.393
M-29-00	M-29-DWF-8/M-29-C-18-A	FOUR_1100	BR	0.018	0.018	0.000	0.599	0.249
M-29-00	M-29-DWF-8/M-29-C-18-A	FOUR_1101	BR	0.021	0.018	0.003	14.055	4.002
M-29-00	M-29-DWF-22/M-29-C-20	FOUR_1102	BR	0.024	0.024	0.000	0.245	0.151
M-29-00	M-29-DWF-22/M-29-C-20	FOUR_1103	BR	0.014	0.013	0.001	0.143	0.091
M-29-00	M-29-DWF-8/M-29-C-18-B	FOUR_1104	BR	0.010	0.010	0.000	1.430	0.379
M-29-00	M-29-DWF-8/M-29-C-18-B	FOUR_1105	BR	0.034	0.034	0.000	1.004	0.258
M-29-00	M-29-DWF-6/M-29-C-22-A	FOUR_1106	BR	0.011	0.008	0.003	0.067	0.067
M-29-00	M-29-DWF-6/M-29-C-22-A	FOUR_1107	BR	0.020	0.020	0.000	0.042	0.042
M-29-00	M-29-DWF-6/M-29-C-22-A	FOUR_1108	BR	0.009	0.009	0.000	6.006	3.128
M-29-00	M-29-DWF-6/M-29-C-22-A	FOUR_1109	BR	0.005	0.005	0.000	0.092	0.092
M-29-00	M-29-DWF-6/M-29-C-22-A	FOUR_1110	BR	0.031	0.031	0.000	5.260	2.382
M-29-00	M-29-DWF-6/M-29-C-22-A	FOUR_1111	BR	0.056	0.054	0.002	0.363	0.261
M-29-00	M-29-DWF-6/M-29-C-22-A	FOUR_1112	BR	0.015	0.011	0.004	0.018	0.001
M-29-00	M-29-DWF-6/M-29-C-22-A	FOUR_1113	BR	0.007	0.007	0.000	0.009	0.000
M-29-00	M-29-DWF-6/M-29-C-22-A	FOUR_1114	BR	0.007	0.004	0.003	0.011	0.011
M-29-00	M-29-DWF-6/M-29-C-22-A	FOUR_1115	BR	0.022	0.014	0.008	7.275	2.448
M-29-00	M-29-DWF-6/M-29-C-22-A	FOUR_1116	BR	0.050	0.026	0.024	0.820	0.670
M-29-00	M-29-DWF-23/M-29-C-21	FOUR_1117	BR	0.030	0.030	0.000	0.192	0.094
M-29-00	M-29-DWF-5/M-29-C-23-A	FOUR_1118	BR	0.008	0.007	0.001	0.042	0.008
M-29-00	M-29-DWF-5/M-29-C-23-A	FOUR_1119	BR	0.003	0.003	0.000	0.055	0.029
M-29-00	M-29-DWF-5/M-29-C-23-A	FOUR_1120	BR	0.009	0.008	0.001	0.043	0.011
M-29-00	M-29-DWF-5/M-29-C-23-A	FOUR_1121	BR	0.011	0.005	0.006	0.028	0.002
M-29-00	M-29-DWF-21/M-29-C-24-B	FOUR_1122	BR	0.027	0.000	0.027	3.719	0.573
M-29-00	M-29-DWF-21/M-29-C-24-B	FOUR_1123	BR	0.105	0.000	0.105	0.251	0.115
M-29-00	M-29-DWF-3/M-29-C-26	FOUR_1124	BR	0.044	0.026	0.018	0.240	0.158

ALCOSAN POC	Model Subcatchment	Concept Municipal Project UID	BMP Type	Concept Municipal Project Area (acres)	Public ROW or Parcel		Concept Municipal Project Individual Drainage Area (acres)*	Concept Municipal Project Individual Drainage Area (acres)*
					Area of Municipal Project in Public ROW (acres)	Area of Municipal Project outside of Public ROW (acres)		
M-29-00	M-29-DWF-4/M-29-C-27	FOUR_1125	BR	0.005	0.005	0.000	0.050	0.013
M-29-00	M-29-DWF-4/M-29-C-27	FOUR_1126	BR	0.015	0.015	0.000	0.024	0.002
M-29-00	M-29-DWF-23/M-29-C-21	FOUR_1127	BR	0.107	0.000	0.107	1.139	0.708
M-29-00	M-29-DWF-23/M-29-C-21	FOUR_1128	BR	0.059	0.034	0.025	0.421	0.141
M-29-00	M-29-DWF-6/M-29-C-22-A	FOUR_1129	BR	0.022	0.002	0.020	1.031	0.609
M-29-00	M-29-DWF-5/M-29-C-23-A	FOUR_1130	BR	0.110	0.026	0.084	0.185	0.069
M-29-00	M-29-DWF-5/M-29-C-23-A	FOUR_1131	BR	0.060	0.018	0.042	0.245	0.062
M-29-00	M-29-DWF-5/M-29-C-23-A	FOUR_1132	BR	0.014	0.012	0.002	0.022	0.003
M-29-00	M-29-DWF-5/M-29-C-23-A	FOUR_1133	BR	0.008	0.006	0.002	0.068	0.042
M-29-00	M-29-DWF-6/M-29-C-22-A	FOUR_1134	BR	0.104	0.022	0.082	0.580	0.178
M-29-00	M-29-DWF-6/M-29-C-22-A	FOUR_1135	BR	0.020	0.020	0.000	0.056	0.035
M-29-00	M-29-DWF-6/M-29-C-22-A	FOUR_1136	BR	0.075	0.025	0.050	5.154	2.734
M-29-00	M-29-S-25	FOUR_1137	BR	0.051	0.000	0.051	0.218	0.144
M-29-00	M-29-S-25	FOUR_1138	BR	0.028	0.000	0.028	0.134	0.085
M-29-00	M-29-S-25	FOUR_1139	BR	0.049	0.000	0.049	0.121	0.046
M-29-00	M-29-DWF-19/M-29-C-6-A	FOUR_1140	BR	0.023	0.019	0.004	0.503	0.206
M-29-00	M-29-DWF-19/M-29-C-6-A	FOUR_1141	BR	0.014	0.013	0.001	0.016	0.002
M-29-00	M-29-DWF-19/M-29-C-6-A	FOUR_1142	BR	0.008	0.007	0.001	0.032	0.001
M-29-00	M-29-DWF-23/M-29-C-21	FOUR_1143	BR	0.010	0.009	0.001	0.076	0.028
M-29-00	M-29-DWF-6/M-29-C-22-A	FOUR_1144	BR	0.006	0.006	0.000	5.525	1.138
M-29-00	M-29-DWF-6/M-29-C-22-A	FOUR_1145	BR	0.025	0.021	0.004	7.714	2.108
M-29-00	M-29-DWF-6/M-29-C-22-A	FOUR_1146	BR	0.007	0.004	0.003	0.055	0.018
M-29-00	M-29-DWF-6/M-29-C-22-A	FOUR_1147	BR	0.013	0.009	0.004	1.008	0.723
M-29-00	M-29-DWF-6/M-29-C-22-B	FOUR_1148	BR	0.015	0.000	0.015	0.105	0.075
M-29-00	M-29-DWF-5/M-29-C-23-C	FOUR_1149	BR	0.009	0.004	0.005	0.012	0.002
M-29-00	M-29-DWF-5/M-29-C-23-A	FOUR_1150	BR	0.013	0.006	0.007	0.030	0.006
M-29-00	M-29-DWF-23/M-29-C-21	FOUR_1151	BR	0.032	0.017	0.015	0.225	0.090
M-29-00	M-29-DWF-23/M-29-C-21	FOUR_1152	BR	0.012	0.007	0.005	0.364	0.237
M-29-00	M-29-DWF-8/M-29-C-18-A	FOUR_1153	BR	0.008	0.003	0.005	0.010	0.000
M-29-00	M-29-DWF-23/M-29-C-21	FOUR_1154	BR	0.005	0.002	0.003	0.153	0.131
M-29-00	M-29-DWF-4/M-29-C-27	FOUR_1155	BR	0.005	0.004	0.001	0.008	0.002
M-29-00	M-29-DWF-4/M-29-C-27	FOUR_1156	BR	0.006	0.006	0.000	0.140	0.100
M-29-00	M-29-DWF-4/M-29-C-27	FOUR_1157	BR	0.004	0.002	0.002	0.009	0.001
M-29-00	M-29-DWF-4/M-29-C-27	FOUR_1158	BR	0.004	0.002	0.002	0.139	0.081
M-29-00	M-29-DWF-4/M-29-C-27	FOUR_1159	BR	0.009	0.009	0.000	0.333	0.119
M-29-00	M-29-DWF-4/M-29-C-27	FOUR_1160	BR	0.008	0.007	0.001	0.214	0.057
M-29-00	M-29-DWF-3/M-29-C-26	FOUR_1161	BR	0.020	0.007	0.013	0.114	0.048

ALCOSAN POC	Model Subcatchment	Concept Municipal Project UID	BMP Type	Concept Municipal Project Area (acres)	Public ROW or Parcel		Concept Municipal Project Individual Drainage Area (acres)*	Concept Municipal Project Individual Drainage Area (acres)*
					Area of Municipal Project in Public ROW (acres)	Area of Municipal Project outside of Public ROW (acres)		
M-29-00	M-29-DWF-3/M-29-C-26	FOUR_1162	BR	0.006	0.003	0.003	0.043	0.024
M-29-00	M-29-DWF-8/M-29-C-18-A	FOUR_1163	BR	0.034	0.016	0.018	0.313	0.101
M-29-00	M-29-DWF-8/M-29-C-18-A	FOUR_1164	BR	0.015	0.002	0.013	0.635	0.092
M-29-00	M-29-DWF-8/M-29-C-18-A	FOUR_1165	BR	0.021	0.012	0.009	0.163	0.062
M-29-00	M-29-DWF-10/M-29-C-17-A	FOUR_1166	BR	0.006	0.006	0.000	0.120	0.046
M-29-00	M-29-DWF-10/M-29-C-17-A	FOUR_1167	BR	0.009	0.008	0.001	0.310	0.128
M-29-00	M-29-DWF-10/M-29-C-17-A	FOUR_1168	BR	0.006	0.006	0.000	0.399	0.111
M-29-00	M-29-DWF-10/M-29-C-17-A	FOUR_1169	BR	0.004	0.003	0.001	0.031	0.004
M-29-00	M-29-DWF-10/M-29-C-17-A	FOUR_1170	BR	0.004	0.004	0.000	1.161	0.338
M-29-00	M-29-DWF-10/M-29-C-17-A	FOUR_1171	BR	0.005	0.001	0.004	0.177	0.029
M-29-00	M-29-DWF-10/M-29-C-17-A	FOUR_1172	BR	0.024	0.021	0.003	0.031	0.011
M-29-00	M-29-DWF-10/M-29-C-17-A	FOUR_1173	BR	0.013	0.007	0.006	0.030	0.006
M-29-00	M-29-DWF-10/M-29-C-17-A	FOUR_1174	BR	0.046	0.040	0.006	0.122	0.051
M-29-00	M-29-DWF-10/M-29-C-17-B	FOUR_1175	BR	0.015	0.015	0.000	0.065	0.037
M-29-00	M-29-DWF-10/M-29-C-17-B	FOUR_1176	BR	0.003	0.000	0.003	0.006	0.000
M-29-00	M-29-DWF-10/M-29-C-17-B	FOUR_1177	BR	0.010	0.010	0.000	0.059	0.013
M-29-00	M-29-DWF-10/M-29-C-17-B	FOUR_1178	BR	0.013	0.013	0.000	4.087	1.176
M-29-00	M-29-DWF-10/M-29-C-17-B	FOUR_1179	BR	0.011	0.010	0.001	0.703	0.313
M-29-00	M-29-DWF-10/M-29-C-17-B	FOUR_1180	BR	0.029	0.020	0.009	0.076	0.029
M-29-00	M-29-DWF-10/M-29-C-17-B	FOUR_1181	BR	0.008	0.006	0.002	0.027	0.015
M-29-00	M-29-DWF-10/M-29-C-17-B	FOUR_1182	BR	0.007	0.005	0.002	0.007	0.002
M-29-00	M-29-DWF-10/M-29-C-17-B	FOUR_1183	BR	0.006	0.004	0.002	0.030	0.017
M-29-00	M-29-DWF-10/M-29-C-17-B	FOUR_1184	BR	0.006	0.005	0.001	0.055	0.011
M-29-00	M-29-DWF-21/M-29-C-24-B	FOUR_1185	BR	0.043	0.000	0.043	0.454	0.136
M-29-00	M-29-DWF-21/M-29-C-24-B	FOUR_1186	BR	0.140	0.000	0.140	0.350	0.093
M-29-00	M-29-DWF-9/M-29-C-19-B	FOUR_1187	BR	0.006	0.000	0.006	0.012	0.000
M-29-00	M-29-DWF-9/M-29-C-19-A	FOUR_1188	BR	0.089	0.074	0.015	0.242	0.066
M-29-00	M-29-DWF-21/M-29-S-24-A	FOUR_1189	BR	0.032	0.000	0.032	0.129	0.081
M-29-00	M-29-DWF-9/M-29-C-19-B	FOUR_1190	BR	0.004	0.000	0.004	0.034	0.016
M-29-00	M-29-DWF-21/M-29-S-24-A	FOUR_1191	BR	0.038	0.000	0.038	0.126	0.053
M-29-00	M-29-DWF-21/M-29-S-24-A	FOUR_1192	BR	0.065	0.000	0.065	0.109	0.053
M-29-00	M-29-DWF-21/M-29-S-24-A	FOUR_1193	BR	0.113	0.000	0.113	0.171	0.051
M-29-00	M-29-DWF-9/M-29-C-19-A	FOUR_1194	BR	0.007	0.003	0.004	0.122	0.022
M-29-00	M-29-DWF-9/M-29-C-19-A	FOUR_1195	BR	0.006	0.006	0.000	0.355	0.095
M-29-00	M-29-DWF-9/M-29-C-19-A	FOUR_1196	BR	0.018	0.018	0.000	0.058	0.025
M-29-00	M-29-DWF-19/M-29-C-6-A	FOUR_1197	BR	0.005	0.003	0.002	1.608	0.626
M-29-00	M-29-DWF-9/M-29-C-19-A	FOUR_1198	BR	0.012	0.012	0.000	0.022	0.006

ALCOSAN POC	Model Subcatchment	Concept Municipal Project UID	BMP Type	Concept Municipal Project Area (acres)	Public ROW or Parcel		Concept Municipal Project Individual Drainage Area (acres)*	Concept Municipal Project Individual Drainage Area (acres)*
					Area of Municipal Project in Public ROW (acres)	Area of Municipal Project outside of Public ROW (acres)		
M-29-00	M-29-DWF-9/M-29-C-19-A	FOUR_1199	BR	0.008	0.007	0.001	0.792	0.240
M-29-00	M-29-DWF-19/M-29-C-6-A	FOUR_1200	BR	0.012	0.012	0.000	0.104	0.019
M-29-00	M-29-DWF-19/M-29-C-6-A	FOUR_1201	BR	0.018	0.017	0.001	0.504	0.261
M-29-00	M-29-DWF-19/M-29-C-6-A	FOUR_1202	BR	0.009	0.009	0.000	0.171	0.044
M-29-00	M-29-DWF-19/M-29-C-6-A	FOUR_1203	BR	0.005	0.005	0.000	0.973	0.233
M-29-00	M-29-DWF-19/M-29-C-6-A	FOUR_1204	BR	0.004	0.001	0.003	0.010	0.000
M-29-00	M-29-DWF-19/M-29-C-6-A	FOUR_1205	BR	0.009	0.004	0.005	0.011	0.001
M-29-00	M-29-DWF-19/M-29-C-6-A	FOUR_1206	BR	0.064	0.032	0.032	0.351	0.112
M-29-00	M-29-DWF-19/M-29-C-6-A	FOUR_1207	BR	0.012	0.006	0.006	0.612	0.183
M-29-00	M-29-DWF-19/M-29-C-6-A	FOUR_1208	BR	0.009	0.009	0.000	0.015	0.002
M-29-00	M-29-DWF-19/M-29-C-6-A	FOUR_1209	BR	0.014	0.010	0.004	0.036	0.002
M-29-00	M-29-DWF-19/M-29-C-6-A	FOUR_1210	BR	0.008	0.008	0.000	0.013	0.008
M-29-00	M-29-DWF-19/M-29-C-6-A	FOUR_1211	BR	0.011	0.007	0.004	0.021	0.001
M-29-00	M-29-DWF-19/M-29-C-6-A	FOUR_1212	BR	0.016	0.016	0.000	0.074	0.015
M-29-00	M-29-DWF-19/M-29-C-6-A	FOUR_1213	BR	0.011	0.009	0.002	1.759	0.835
M-29-00	M-29-DWF-19/M-29-C-6-A	FOUR_1214	BR	0.009	0.009	0.000	0.010	0.004
M-29-00	M-29-DWF-19/M-29-C-6-A	FOUR_1215	BR	0.005	0.004	0.001	0.360	0.133
M-29-00	M-29-DWF-19/M-29-C-6-A	FOUR_1216	BR	0.030	0.029	0.001	0.062	0.029
M-29-00	M-29-DWF-19/M-29-C-6-A	FOUR_1217	BR	0.079	0.059	0.020	0.094	0.016
M-29-00	M-29-DWF-19/M-29-C-6-A	FOUR_1218	BR	0.007	0.006	0.001	0.015	0.000
M-29-00	M-29-DWF-19/M-29-C-6-A	FOUR_1219	BR	0.016	0.013	0.003	0.022	0.000
M-29-00	M-29-DWF-19/M-29-C-6-A	FOUR_1220	BR	0.007	0.006	0.001	0.013	0.002
M-29-00	M-29-DWF-19/M-29-C-6-A	FOUR_1221	BR	0.006	0.006	0.000	0.020	0.001
M-29-00	M-29-DWF-7/M-29-C-2	FOUR_1222	BR	0.427	0.196	0.231	1.254	0.399
M-29-00	M-29-DWF-7/M-29-C-2	FOUR_1223	BR	0.052	0.024	0.028	1.712	0.644
M-29-00	M-29-DWF-7/M-29-C-2	FOUR_1224	BR	0.028	0.000	0.028	0.810	0.209
M-29-00	M-29-DWF-7/M-29-C-2	FOUR_1225	BR	0.030	0.000	0.030	0.041	0.006
M-29-00	M-29-DWF-7/M-29-C-2	FOUR_1226	BR	0.013	0.010	0.003	0.129	0.045
M-29-00	M-29-DWF-7/M-29-C-2	FOUR_1227	BR	0.024	0.024	0.000	0.196	0.044
M-29-00	M-29-DWF-17/M-29-C-3	FOUR_1228	BR	0.139	0.118	0.021	0.436	0.124
M-29-00	M-29-DWF-17/M-29-C-3	FOUR_1229	BR	0.020	0.012	0.008	0.080	0.029
M-29-00	M-29-DWF-17/M-29-C-3	FOUR_1230	BR	0.022	0.020	0.002	0.047	0.012
M-29-00	M-29-DWF-17/M-29-C-3	FOUR_1231	BR	0.034	0.023	0.011	0.042	0.001
M-29-00	M-29-DWF-11/M-29-C-4	FOUR_1232	BR	0.022	0.022	0.000	0.042	0.002
M-29-00	M-29-DWF-20/M-29-C-14-B	FOUR_1233	BR	0.120	0.033	0.087	2.039	0.898
M-29-00	M-29-DWF-20/M-29-C-14-B	FOUR_1234	BR	0.050	0.050	0.000	0.335	0.145
M-29-00	M-29-DWF-16/M-29-C-13-A	FOUR_1235	BR	0.005	0.005	0.000	0.060	0.021

ALCOSAN POC	Model Subcatchment	Concept Municipal Project UID	BMP Type	Concept Municipal Project Area (acres)	Public ROW or Parcel		Concept Municipal Project Individual Drainage Area (acres)*	Concept Municipal Project Individual Drainage Area (acres)*
					Area of Municipal Project in Public ROW (acres)	Area of Municipal Project outside of Public ROW (acres)		
M-29-00	M-29-DWF-16/M-29-C-13-A	FOUR_1236	BR	0.010	0.008	0.002	0.013	0.002
M-29-00	M-29-DWF-16/M-29-C-13-A	FOUR_1237	BR	0.007	0.005	0.002	0.012	0.003
M-29-00	M-29-DWF-16/M-29-C-13-A	FOUR_1238	BR	0.014	0.014	0.000	1.001	0.305
M-29-00	M-29-DWF-16/M-29-C-13-A	FOUR_1239	BR	0.016	0.016	0.000	0.020	0.005
M-29-00	M-29-DWF-16/M-29-C-13-A	FOUR_1240	BR	0.009	0.009	0.000	0.011	0.003
M-29-00	M-29-DWF-16/M-29-C-13-A	FOUR_1241	BR	0.005	0.005	0.000	0.005	0.000
M-29-00	M-29-DWF-16/M-29-C-13-A	FOUR_1242	BR	0.011	0.011	0.000	0.012	0.002
M-29-00	M-29-DWF-16/M-29-C-13-A	FOUR_1243	BR	0.031	0.030	0.001	0.042	0.010
M-29-00	M-29-DWF-16/M-29-C-13-A	FOUR_1244	BR	0.066	0.066	0.000	0.128	0.016
M-29-00	M-29-DWF-20/M-29-C-14-B	FOUR_1245	BR	0.020	0.012	0.008	5.136	1.538
M-29-00	M-29-DWF-20/M-29-C-14-B	FOUR_1246	BR	0.011	0.006	0.005	0.033	0.008
M-29-00	M-29-DWF-20/M-29-C-14-B	FOUR_1247	BR	0.013	0.009	0.004	0.146	0.046
M-29-00	M-29-DWF-20/M-29-C-14-B	FOUR_1248	BR	0.007	0.005	0.002	0.114	0.039
M-29-00	M-29-DWF-20/M-29-C-14-B	FOUR_1249	BR	0.030	0.027	0.003	0.103	0.023
M-29-00	M-29-DWF-20/M-29-C-14-B	FOUR_1250	BR	0.015	0.015	0.000	6.202	2.108
M-29-00	M-29-DWF-20/M-29-C-14-B	FOUR_1251	BR	0.007	0.004	0.003	0.023	0.004
M-29-00	M-29-DWF-20/M-29-C-14-B	FOUR_1252	BR	0.003	0.003	0.000	0.005	0.000
M-29-00	M-29-DWF-20/M-29-C-14-B	FOUR_1253	BR	0.005	0.005	0.000	0.010	0.003
M-29-00	M-29-DWF-13/M-29-C-8	FOUR_1254	BR	0.009	0.003	0.006	0.012	0.000
M-29-00	M-29-DWF-13/M-29-C-8	FOUR_1255	BR	0.019	0.019	0.000	0.407	0.077
M-29-00	M-29-DWF-13/M-29-C-8	FOUR_1256	BR	0.025	0.025	0.000	0.149	0.066
M-29-00	M-29-DWF-13/M-29-C-8	FOUR_1257	BR	0.010	0.010	0.000	0.042	0.013
M-29-00	M-29-DWF-13/M-29-C-8	FOUR_1258	BR	0.011	0.011	0.000	0.014	0.004
M-29-00	M-29-DWF-13/M-29-C-8	FOUR_1259	BR	0.013	0.006	0.007	1.374	0.568
M-29-00	M-29-DWF-13/M-29-C-8	FOUR_1260	BR	0.010	0.002	0.008	0.011	0.002
M-29-00	M-29-DWF-13/M-29-C-8	FOUR_1261	BR	0.030	0.023	0.007	0.063	0.025
M-29-00	M-29-DWF-13/M-29-C-8	FOUR_1262	BR	0.007	0.007	0.000	0.017	0.008
M-29-00	M-29-DWF-13/M-29-C-8	FOUR_1263	BR	0.010	0.004	0.006	0.014	0.001
M-29-00	M-29-DWF-13/M-29-C-8	FOUR_1264	BR	0.007	0.007	0.000	0.008	0.004
M-29-00	M-29-DWF-13/M-29-C-8	FOUR_1265	BR	0.038	0.038	0.000	0.047	0.012
M-29-00	M-29-DWF-13/M-29-C-8	FOUR_1266	BR	0.052	0.052	0.000	0.064	0.026
M-29-00	M-29-DWF-13/M-29-C-8	FOUR_1267	BR	0.134	0.075	0.059	0.156	0.022
M-29-00	M-29-DWF-13/M-29-C-8	FOUR_1268	BR	0.030	0.011	0.019	0.043	0.003
M-29-00	M-29-DWF-13/M-29-C-8	FOUR_1269	BR	0.014	0.007	0.007	0.016	0.001
M-29-00	M-29-DWF-13/M-29-C-8	FOUR_1270	BR	0.067	0.036	0.031	0.074	0.017
M-29-00	M-29-DWF-13/M-29-C-8	FOUR_1271	BR	0.020	0.011	0.009	0.042	0.021
M-29-00	M-29-DWF-16/M-29-C-7	FOUR_1272	BR	0.057	0.040	0.017	0.074	0.024

ALCOSAN POC	Model Subcatchment	Concept Municipal Project UID	BMP Type	Concept Municipal Project Area (acres)	Public ROW or Parcel		Concept Municipal Project Individual Drainage Area (acres)*	Concept Municipal Project Individual Drainage Area (acres)*
					Area of Municipal Project in Public ROW (acres)	Area of Municipal Project outside of Public ROW (acres)		
M-29-00	M-29-DWF-16/M-29-C-7	FOUR_1273	BR	0.008	0.007	0.001	0.020	0.012
M-29-00	M-29-DWF-16/M-29-C-7	FOUR_1274	BR	0.022	0.013	0.009	0.023	0.001
M-29-00	M-29-DWF-16/M-29-C-7	FOUR_1275	BR	0.024	0.019	0.005	0.028	0.003
M-29-00	M-29-DWF-16/M-29-C-7	FOUR_1276	BR	0.046	0.033	0.013	0.057	0.002
M-29-00	M-29-DWF-14/M-29-C-9	FOUR_1277	BR	0.018	0.018	0.000	0.022	0.012
M-29-00	M-29-DWF-14/M-29-C-9	FOUR_1278	BR	0.043	0.043	0.000	0.083	0.030
M-29-00	M-29-DWF-14/M-29-C-9	FOUR_1279	BR	0.201	0.172	0.029	0.225	0.040
M-29-00	M-29-DWF-14/M-29-C-9	FOUR_1280	BR	0.023	0.023	0.000	0.955	0.344
M-29-00	M-29-DWF-14/M-29-C-9	FOUR_1281	BR	0.010	0.010	0.000	0.062	0.051
M-29-00	M-29-DWF-14/M-29-C-9	FOUR_1282	BR	0.016	0.016	0.000	0.019	0.009
M-29-00	M-29-DWF-14/M-29-C-9	FOUR_1283	BR	0.027	0.027	0.000	0.055	0.015
M-29-00	M-29-DWF-14/M-29-C-9	FOUR_1284	BR	0.013	0.013	0.000	0.050	0.037
M-29-00	M-29-DWF-14/M-29-C-9	FOUR_1285	BR	0.013	0.013	0.000	0.015	0.006
M-29-00	M-29-DWF-14/M-29-C-9	FOUR_1286	BR	0.007	0.005	0.002	0.143	0.054
M-29-00	M-29-DWF-14/M-29-C-9	FOUR_1287	BR	0.016	0.016	0.000	0.029	0.017
M-29-00	M-29-DWF-14/M-29-C-9	FOUR_1288	BR	0.011	0.011	0.000	0.013	0.010
M-29-00	M-29-DWF-14/M-29-C-9	FOUR_1289	BR	0.005	0.005	0.000	0.006	0.004
M-29-00	M-29-DWF-15/M-29-C-10	FOUR_1290	BR	0.035	0.031	0.004	0.126	0.078
M-29-00	M-29-DWF-15/M-29-C-10	FOUR_1291	BR	0.035	0.028	0.007	0.043	0.020
M-29-00	M-29-DWF-15/M-29-C-10	FOUR_1292	BR	0.025	0.021	0.004	0.052	0.015
M-29-00	M-29-DWF-15/M-29-C-10	FOUR_1293	BR	0.074	0.054	0.020	0.150	0.069
M-29-00	M-29-DWF-15/M-29-C-10	FOUR_1294	BR	0.013	0.010	0.003	0.054	0.028
M-29-00	M-29-DWF-15/M-29-C-10	FOUR_1295	BR	0.029	0.021	0.008	0.035	0.019
M-29-00	M-29-DWF-15/M-29-C-10	FOUR_1296	BR	0.013	0.009	0.004	0.165	0.050
M-29-00	M-29-DWF-15/M-29-C-10	FOUR_1297	BR	0.013	0.009	0.004	0.019	0.003
M-29-00	M-29-DWF-15/M-29-C-10	FOUR_1298	BR	0.012	0.011	0.001	0.065	0.019
M-29-00	M-29-DWF-15/M-29-C-10	FOUR_1299	BR	0.006	0.006	0.000	0.009	0.000
M-29-00	M-29-DWF-15/M-29-C-10	FOUR_1300	BR	0.011	0.011	0.000	0.013	0.006
M-29-00	M-29-DWF-15/M-29-C-10	FOUR_1301	BR	0.010	0.009	0.001	0.012	0.007
M-29-00	M-29-DWF-15/M-29-C-10	FOUR_1302	BR	0.021	0.021	0.000	0.027	0.009
M-29-00	M-29-DWF-15/M-29-C-10	FOUR_1303	BR	0.043	0.043	0.000	0.149	0.034
M-29-00	M-29-DWF-15/M-29-C-10	FOUR_1304	BR	0.008	0.002	0.006	0.015	0.006
M-29-00	M-29-DWF-15/M-29-C-10	FOUR_1305	BR	0.007	0.006	0.001	0.024	0.011
M-29-00	M-29-DWF-15/M-29-C-10	FOUR_1306	BR	0.020	0.020	0.000	0.047	0.010
M-29-00	M-29-DWF-15/M-29-C-10	FOUR_1307	BR	0.016	0.013	0.003	0.017	0.011
M-29-00	M-29-DWF-15/M-29-C-10	FOUR_1308	BR	0.010	0.010	0.000	0.019	0.010
M-29-00	M-29-DWF-15/M-29-C-10	FOUR_1309	BR	0.015	0.015	0.000	0.042	0.012

ALCOSAN POC	Model Subcatchment	Concept Municipal Project UID	BMP Type	Concept Municipal Project Area (acres)	Public ROW or Parcel		Concept Municipal Project Individual Drainage Area (acres)*	Concept Municipal Project Individual Drainage Area (acres)*
					Area of Municipal Project in Public ROW (acres)	Area of Municipal Project outside of Public ROW (acres)		
M-29-00	M-29-DWF-15/M-29-C-10	FOUR_1310	BR	0.008	0.008	0.000	0.010	0.002
M-29-00	M-29-DWF-15/M-29-C-10	FOUR_1311	BR	0.009	0.008	0.001	0.039	0.003
M-29-00	M-29-DWF-15/M-29-C-10	FOUR_1312	BR	0.022	0.022	0.000	0.330	0.154
M-29-00	M-29-DWF-15/M-29-C-10	FOUR_1313	BR	0.014	0.014	0.000	0.017	0.009
M-29-00	M-29-DWF-15/M-29-C-10	FOUR_1314	BR	0.016	0.016	0.000	0.048	0.006
M-29-00	M-29-DWF-15/M-29-C-10	FOUR_1315	BR	0.014	0.014	0.000	0.017	0.008
M-29-00	M-29-DWF-15/M-29-C-10	FOUR_1316	BR	0.079	0.079	0.000	0.149	0.050
M-29-00	M-29-DWF-15/M-29-C-10	FOUR_1317	BR	0.066	0.066	0.000	0.082	0.005
M-29-00	M-29-DWF-15/M-29-C-10	FOUR_1318	BR	0.011	0.011	0.000	0.013	0.004
M-29-00	M-29-DWF-15/M-29-C-10	FOUR_1319	BR	0.010	0.009	0.001	0.014	0.001
M-29-00	M-29-DWF-15/M-29-C-10	FOUR_1320	BR	0.007	0.006	0.001	0.008	0.000
M-29-00	M-29-DWF-12/M-29-C-12	FOUR_1321	BR	0.008	0.008	0.000	0.103	0.059
M-29-00	M-29-DWF-12/M-29-C-12	FOUR_1322	BR	0.026	0.006	0.020	1.336	0.533
M-29-00	M-29-DWF-12/M-29-C-12	FOUR_1323	BR	0.026	0.018	0.008	0.724	0.247
M-29-00	M-29-DWF-12/M-29-C-12	FOUR_1324	BR	0.023	0.023	0.000	0.576	0.176
M-29-00	M-29-DWF-12/M-29-C-12	FOUR_1325	BR	0.016	0.016	0.000	0.436	0.134
M-29-00	M-29-DWF-12/M-29-C-12	FOUR_1326	BR	0.017	0.014	0.003	1.210	0.498
M-29-00	M-29-DWF-12/M-29-C-12	FOUR_1327	BR	0.012	0.012	0.000	0.030	0.013
M-29-00	M-29-DWF-12/M-29-C-12	FOUR_1328	BR	0.194	0.122	0.072	0.342	0.129
M-29-00	M-29-DWF-12/M-29-C-12	FOUR_1329	BR	0.013	0.007	0.006	0.026	0.001
M-29-00	M-29-DWF-12/M-29-C-12	FOUR_1330	BR	0.008	0.005	0.003	0.019	0.002
M-29-00	M-29-DWF-19/M-29-C-6-A	FOUR_1331	BR	0.010	0.010	0.000	0.020	0.000
M-29-00	M-29-DWF-19/M-29-S-6-B	FOUR_1332	BR	0.038	0.000	0.038	0.113	0.078
M-29-00	M-29-DWF-19/M-29-S-6-B	FOUR_1333	BR	0.093	0.000	0.093	1.006	0.480
M-29-00	M-29-DWF-20/M-29-S-14-A	FOUR_1334	BR	0.087	0.000	0.087	0.268	0.091
M-29-00	M-29-DWF-11/M-29-S-16	FOUR_1335	BR	0.009	0.000	0.009	0.012	0.002
M-29-00	M-29-DWF-16/M-29-S-13-B	FOUR_1336	BR	0.098	0.098	0.000	0.732	0.201
M-29-00	M-29-DWF-16/M-29-S-13-B	FOUR_1337	BR	0.043	0.043	0.000	0.099	0.047
M-29-00	M-29-DWF-16/M-29-S-13-B	FOUR_1338	BR	0.221	0.221	0.000	0.661	0.292
M-29-00	M-29-DWF-11/M-29-S-16	FOUR_1339	BR	0.006	0.006	0.000	1.764	0.224
M-29-00	M-29-DWF-11/M-29-S-16	FOUR_1340	BR	0.014	0.012	0.002	1.921	0.245
M-29-00	M-29-DWF-3/M-29-C-26	FOUR_1341	BR	0.082	0.051	0.031	0.179	0.085
M-29-00	M-29-DWF-3/M-29-C-26	FOUR_1342	BR	0.009	0.009	0.000	0.156	0.085
M-29-00	M-29-DWF-3/M-29-C-26	FOUR_1343	BR	0.007	0.006	0.001	0.103	0.034
M-29-00	M-29-DWF-3/M-29-C-26	FOUR_1344	BR	0.018	0.018	0.000	0.136	0.043
M-29-00	M-29-DWF-18/M-29-C-5	FOUR_1345	BR	0.005	0.005	0.000	0.224	0.038
M-29-00	M-29-DWF-18/M-29-C-5	FOUR_1346	BR	0.007	0.007	0.000	3.030	0.383

ALCOSAN POC	Model Subcatchment	Concept Municipal Project UID	BMP Type	Concept Municipal Project Area (acres)	Public ROW or Parcel		Concept Municipal Project Individual Drainage Area (acres)*	Concept Municipal Project Individual Drainage Area (acres)*
					Area of Municipal Project in Public ROW (acres)	Area of Municipal Project outside of Public ROW (acres)		
M-29-00	M-29-DWF-18/M-29-C-5	FOUR_1347	BR	0.017	0.017	0.000	0.021	0.006
M-29-00	M-29-DWF-13/M-29-C-8	FOUR_1348	BR	0.008	0.008	0.000	0.009	0.006
M-29-00	M-29-DWF-13/M-29-C-8	FOUR_1349	BR	0.016	0.010	0.006	0.476	0.195
M-29-00	M-29-DWF-12/M-29-C-12	FOUR_1350	BR	0.004	0.000	0.004	0.022	0.005
M-29-00	M-29-DWF-2/M-29-C-15	FOUR_1351	BR	0.044	0.015	0.029	0.085	0.016
M-29-00	M-29-DWF-2/M-29-C-15	FOUR_1352	BR	0.012	0.007	0.005	0.022	0.001
M-29-00	M-29-DWF-15/M-29-C-10	FOUR_1353	BR	0.023	0.011	0.012	0.030	0.002
M-29-00	M-29-DWF-12/M-29-C-12	FOUR_1354	BR	0.025	0.025	0.000	0.036	0.007
M-29-00	M-29-DWF-12/M-29-C-12	FOUR_1355	BR	0.011	0.011	0.000	0.367	0.141
M-29-00	M-29-DWF-15/M-29-C-10	FOUR_1356	BR	0.028	0.015	0.013	0.037	0.003
M-29-00	M-29-DWF-14/M-29-C-9	FOUR_1357	BR	0.010	0.010	0.000	0.012	0.005
M-29-00	M-29-DWF-14/M-29-C-9	FOUR_1358	BR	0.018	0.018	0.000	0.021	0.008
M-29-00	M-29-DWF-14/M-29-C-9	FOUR_1359	BR	0.036	0.036	0.000	0.043	0.013
M-29-00	M-29-DWF-16/M-29-C-7	FOUR_1360	BR	0.015	0.015	0.000	0.079	0.028
M-29-00	M-29-DWF-16/M-29-S-13-B	FOUR_1361	BR	0.095	0.095	0.000	0.110	0.043
M-29-00	M-29-DWF-13/M-29-C-8	FOUR_1362	BR	0.022	0.015	0.007	0.030	0.007
M-29-00	M-29-DWF-13/M-29-C-8	FOUR_1363	BR	0.032	0.030	0.002	0.112	0.035
M-29-00	M-29-DWF-13/M-29-C-8	FOUR_1364	BR	0.018	0.018	0.000	0.020	0.008
M-29-00	M-29-DWF-13/M-29-C-8	FOUR_1365	BR	0.015	0.015	0.000	0.037	0.024
M-29-00	M-29-DWF-14/M-29-C-9	FOUR_1366	BR	0.084	0.077	0.007	0.348	0.129
M-29-00	M-29-DWF-16/M-29-C-7	FOUR_1367	BR	0.014	0.014	0.000	0.025	0.011
M-29-00	M-29-DWF-14/M-29-C-9	FOUR_1368	BR	0.026	0.026	0.000	0.036	0.008
M-29-00	M-29-DWF-14/M-29-C-9	FOUR_1369	BR	0.016	0.016	0.000	0.108	0.071
M-29-00	M-29-DWF-15/M-29-C-10	FOUR_1370	BR	0.034	0.031	0.003	0.055	0.013
M-29-00	M-29-DWF-15/M-29-C-10	FOUR_1371	BR	0.065	0.047	0.018	0.322	0.020
M-29-00	M-29-DWF-15/M-29-C-10	FOUR_1372	BR	0.013	0.009	0.004	2.082	0.786
M-29-00	M-29-DWF-15/M-29-C-10	FOUR_1373	BR	0.022	0.019	0.003	0.061	0.010
M-29-00	M-29-DWF-12/M-29-C-12	FOUR_1374	BR	0.013	0.011	0.002	0.055	0.010
M-29-00	M-29-DWF-19/M-29-S-6-B	FOUR_1375	BR	0.061	0.000	0.061	6.033	0.889
M-29-00	M-29-DWF-19/M-29-S-6-B	FOUR_1376	BR	0.060	0.000	0.060	0.174	0.115
M-29-00	M-29-DWF-19/M-29-S-6-B	FOUR_1377	BR	0.056	0.000	0.056	0.127	0.069
M-29-00	M-29-DWF-3/M-29-C-26	FOUR_1378	BR	0.014	0.011	0.003	0.024	0.004
M-29-00	M-29-DWF-18/M-29-C-5	FOUR_1379	BR	0.006	0.002	0.004	0.031	0.011
M-29-00	M-29-DWF-14/M-29-C-9	FOUR_1380	BR	0.054	0.054	0.000	0.122	0.041
M-29-00	M-29-DWF-2/M-29-C-15	FOUR_2001	IB	0.021	0.008	0.013	0.119	0.042
M-29-00	M-29-DWF-13/M-29-C-8	FOUR_2002	IB	0.048	0.018	0.030	0.084	0.024
M-29-00	M-29-DWF-13/M-29-C-8	FOUR_2003	IB	0.072	0.025	0.047	0.085	0.013

ALCOSAN POC	Model Subcatchment	Concept Municipal Project UID	BMP Type	Concept Municipal Project Area (acres)	Public ROW or Parcel		Concept Municipal Project Individual Drainage Area (acres)*	Concept Municipal Project Individual Project Impervious Drainage Area (acres)*
					Area of Municipal Project in Public ROW (acres)	Area of Municipal Project outside of Public ROW (acres)		
M-29-00	M-29-DWF-16/M-29-C-7	FOUR_2004	IB	0.034	0.026	0.008	1.682	0.245
M-29-00	M-29-DWF-16/M-29-C-7	FOUR_2005	IB	0.025	0.003	0.022	1.395	0.246
M-29-00	M-29-DWF-16/M-29-S-13-B	FOUR_2006	IB	0.186	0.179	0.007	3.555	0.773
M-29-00	M-29-DWF-16/M-29-S-13-B	FOUR_2007	IB	0.216	0.216	0.000	0.584	0.206
M-29-00	M-29-DWF-16/M-29-S-13-B	FOUR_2008	IB	0.135	0.135	0.000	1.043	0.779
M-29-00	M-29-DWF-15/M-29-C-10	FOUR_2009	IB	0.072	0.072	0.000	0.438	0.021
M-29-00	M-29-DWF-14/M-29-C-9	FOUR_4001	VF	0.077	0.062	0.015	1.790	0.760



City of Pittsburgh

Easttown Borough

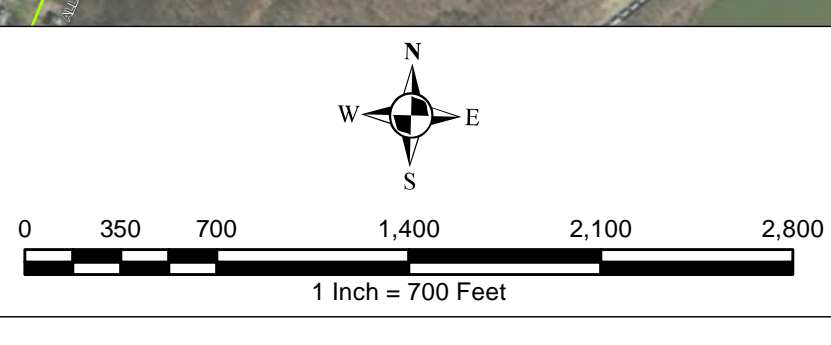
Homestead Borough

West Homestead Borough

- ★ ALCOSAN Structures
- ALCOSAN Shallow-Cut Interceptor
- - - ALCOSAN Deep Tunnel Interceptor
- One Overall Manholes
- One Overall Sewerlines

- Municipal Projects**
- Infiltration Basin
 - Vegetated Filter Strips
 - Bioretention
 - Permeable Pavement

- State Roads
- Combined Sewer Subcatchment
- Municipal Boundaries

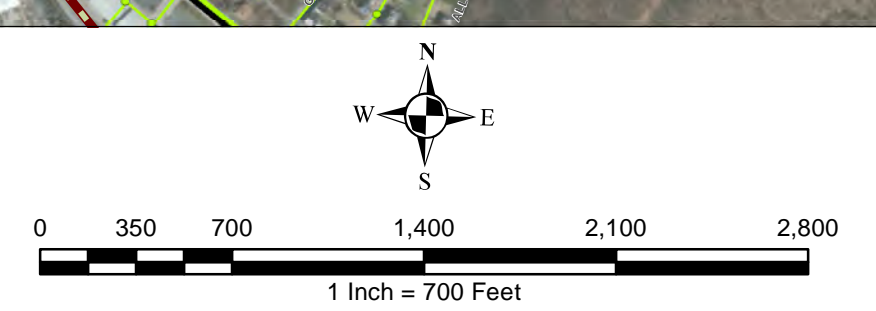


ALCOSAN GSI Project
Four Mile Run M-29
Concept Municipal GSI Projects

File: N:\PFD\31434\05 - ALCOSAN GSI Project\03 - Task 2.1\Figures\FourMileRun_M29_ConceptMunicipalGSI.mxd



- ★ ALCOSAN Structures
- ALCOSAN Shallow-Cut Interceptor
- ALCOSAN Deep Tunnel Interceptor
- One Overall Manholes
- One Overall Sewerlines
- Vegetated Filter Strips Municipal Projects
- Vegetated Filter Strips Drainage Areas
- State Roads
- Combined Sewer Subcatchment
- Municipal Boundaries



ALCOSAN GSI Project
Four Mile Run (M-29)
Concept Municipal Vegetated Filter Strips GSI Projects
Individual Project Drainage Areas

F:\01\NFRD\3436\3436 ALCOSAN GSI Project\03 - Task 2.1\Figures\Four Mile Run - M29\Wide Trim Drainage Areas\Four Mile Run - M29 - VegetatedFilter Strips_IndividualDrainageAreas.mxd

Source: Esri, DigitalGlobe, GeoEye, IGN, GeoEye, USDA, USGS, AeroGRID, IGN, Esri, Swirevision, Earthstar USA, Imagery

Four Mile Run Concept Commercial / Institutional Permeable Pavement, Green Roof, and Special Case GSI Projects: Summary Table

February 21, 2014
Revised October 10, 2014

ALCOSAN POC	Model Subcatchment	Concept Comm / Inst Project UID	BMP Type	Concept Municipal Project Area (acres)	Taxable (acres)	Exempt (acres)	Provisionally Exempt (acres)	Public ROW (acres)
M-29-00	M-29-DWF-3/M-29-C-26	FOUR_6001	CPP	0.060	0.060	0.000	0.000	0.000
M-29-00	M-29-DWF-3/M-29-C-26	FOUR_6002	CPP	0.062	0.057	0.000	0.000	0.005
M-29-00	M-29-DWF-15/M-29-C-11	FOUR_6003	CPP	0.513	0.014	0.000	0.000	0.499
M-29-00	M-29-DWF-15/M-29-C-10	FOUR_6004	CPP	0.140	0.000	0.140	0.000	0.000
M-29-00	M-29-DWF-15/M-29-C-10	FOUR_6005	CPP	0.058	0.058	0.000	0.000	0.000
M-29-00	M-29-DWF-15/M-29-C-10	FOUR_6006	CPP	0.165	0.000	0.165	0.000	0.000
M-29-00	M-29-DWF-15/M-29-C-10	FOUR_6007	CPP	0.115	0.000	0.115	0.000	0.000
M-29-00	M-29-DWF-15/M-29-C-10	FOUR_6008	CPP	0.464	0.000	0.460	0.000	0.004
M-29-00	M-29-DWF-15/M-29-C-10	FOUR_6009	CPP	0.077	0.072	0.000	0.000	0.005
M-29-00	M-29-DWF-15/M-29-C-10	FOUR_6010	CPP	0.202	0.012	0.000	0.000	0.190
M-29-00	M-29-DWF-15/M-29-C-10	FOUR_6011	CPP	0.151	0.000	0.151	0.000	0.000
M-29-00	M-29-DWF-15/M-29-C-10	FOUR_6012	CPP	0.134	0.000	0.134	0.000	0.000
M-29-00	M-29-DWF-22/M-29-C-20	FOUR_6013	CPP	0.060	0.000	0.060	0.000	0.000
M-29-00	M-29-DWF-22/M-29-C-20	FOUR_6014	CPP	0.205	0.000	0.205	0.000	0.000
M-29-00	M-29-DWF-22/M-29-C-20	FOUR_6015	CPP	0.294	0.000	0.294	0.000	0.000
M-29-00	M-29-DWF-22/M-29-C-20	FOUR_6016	CPP	0.586	0.000	0.572	0.000	0.014
M-29-00	M-29-DWF-9/M-29-C-19-B	FOUR_6017	CPP	0.348	0.000	0.039	0.000	0.309
M-29-00	M-29-DWF-9/M-29-C-19-A	FOUR_6018	CPP	0.476	0.245	0.000	0.000	0.231
M-29-00	M-29-DWF-16/M-29-C-7	FOUR_6019	CPP	0.199	0.193	0.000	0.000	0.006
M-29-00	M-29-DWF-16/M-29-C-13-A	FOUR_6020	CPP	0.218	0.000	0.003	0.000	0.215
M-29-00	M-29-DWF-20/M-29-C-14-B	FOUR_6021	CPP	0.204	0.204	0.000	0.000	0.000
M-29-00	M-29-DWF-20/M-29-C-14-B	FOUR_6022	CPP	0.385	0.371	0.014	0.000	0.000
M-29-00	M-29-DWF-20/M-29-C-14-B	FOUR_6023	CPP	0.132	0.126	0.000	0.000	0.006
M-29-00	M-29-DWF-20/M-29-C-14-B	FOUR_6024	CPP	0.199	0.199	0.000	0.000	0.000
M-29-00	M-29-DWF-12/M-29-C-12	FOUR_6025	CPP	0.096	0.096	0.000	0.000	0.000

ALCOSAN POC	Model Subcatchment	Concept Comm / Inst Project UID	BMP Type	Concept Municipal Project Area (acres)	Taxable (acres)	Exempt (acres)	Provisionally Exempt (acres)	Public ROW (acres)
M-29-00	M-29-DWF-5/M-29-C-23-A	FOUR_6026	CPP	0.138	0.056	0.047	0.000	0.035
M-29-00	M-29-DWF-5/M-29-C-23-A	FOUR_6027	CPP	0.167	0.000	0.008	0.000	0.159
M-29-00	M-29-DWF-5/M-29-C-23-A	FOUR_6028	CPP	0.200	0.002	0.000	0.000	0.198
M-29-00	M-29-DWF-5/M-29-C-23-A	FOUR_6029	CPP	0.080	0.000	0.079	0.000	0.001
M-29-00	M-29-DWF-5/M-29-C-23-A	FOUR_6030	CPP	0.097	0.000	0.004	0.000	0.093
M-29-00	M-29-DWF-5/M-29-C-23-A	FOUR_6031	CPP	0.105	0.103	0.000	0.000	0.002
M-29-00	M-29-DWF-5/M-29-C-23-A	FOUR_6032	CPP	0.099	0.097	0.000	0.000	0.002
M-29-00	M-29-DWF-5/M-29-C-23-C	FOUR_6033	CPP	0.092	0.003	0.089	0.000	0.000
M-29-00	M-29-DWF-5/M-29-C-23-C	FOUR_6034	CPP	0.178	0.000	0.177	0.000	0.001
M-29-00	M-29-DWF-5/M-29-C-23-B	FOUR_6035	CPP	0.081	0.000	0.081	0.000	0.000
M-29-00	M-29-DWF-17/M-29-C-3	FOUR_6036	CPP	1.154	0.000	1.154	0.000	0.000
M-29-00	M-29-DWF-11/M-29-C-4	FOUR_6037	CPP	0.136	0.056	0.000	0.000	0.080
M-29-00	M-29-DWF-17/M-29-C-3	FOUR_6038	CPP	0.307	0.000	0.307	0.000	0.000
M-29-00	M-29-DWF-17/M-29-C-3	FOUR_6039	CPP	0.079	0.063	0.000	0.000	0.016
M-29-00	M-29-DWF-7/M-29-C-2	FOUR_6040	CPP	0.317	0.087	0.000	0.000	0.230
M-29-00	M-29-DWF-7/M-29-C-2	FOUR_6041	CPP	3.024	0.022	0.000	0.216	2.786
M-29-00	M-29-DWF-23/M-29-C-21	FOUR_6042	CPP	0.499	0.000	0.499	0.000	0.000
M-29-00	M-29-DWF-6/M-29-C-22-A	FOUR_6043	CPP	1.969	0.000	1.969	0.000	0.000
M-29-00	M-29-DWF-6/M-29-C-22-A	FOUR_6044	CPP	0.443	0.404	0.027	0.000	0.012
M-29-00	M-29-DWF-6/M-29-C-22-A	FOUR_6045	CPP	0.327	0.000	0.317	0.000	0.010
M-29-00	M-29-DWF-6/M-29-C-22-A	FOUR_6046	CPP	0.125	0.000	0.125	0.000	0.000
M-29-00	M-29-DWF-6/M-29-C-22-A	FOUR_6047	CPP	0.233	0.000	0.231	0.000	0.002
M-29-00	M-29-DWF-6/M-29-C-22-A	FOUR_6048	CPP	0.064	0.000	0.061	0.000	0.003
M-29-00	M-29-DWF-6/M-29-C-22-A	FOUR_6049	CPP	0.244	0.109	0.133	0.000	0.002
M-29-00	M-29-DWF-6/M-29-C-22-A	FOUR_6050	CPP	0.198	0.101	0.097	0.000	0.000
M-29-00	M-29-DWF-6/M-29-C-22-A	FOUR_6051	CPP	0.529	0.000	0.497	0.000	0.032
M-29-00	M-29-DWF-8/M-29-C-18-A	FOUR_6052	CPP	4.365	0.000	0.000	0.000	4.365
M-29-00	M-29-DWF-8/M-29-C-18-A	FOUR_6053	CPP	0.407	0.000	0.316	0.000	0.091
M-29-00	M-29-DWF-8/M-29-C-18-A	FOUR_6054	CPP	1.029	0.000	0.099	0.000	0.930
M-29-00	M-29-DWF-8/M-29-C-18-A	FOUR_6055	CPP	0.230	0.142	0.057	0.000	0.031

ALCOSAN POC	Model Subcatchment	Concept Comm / Inst Project UID	BMP Type	Concept Municipal Project Area (acres)	Taxable (acres)	Exempt (acres)	Provisionally Exempt (acres)	Public ROW (acres)
M-29-00	M-29-DWF-8/M-29-C-18-A	FOUR_6056	CPP	0.195	0.000	0.195	0.000	0.000
M-29-00	M-29-DWF-8/M-29-C-18-A	FOUR_6057	CPP	0.160	0.000	0.157	0.000	0.003
M-29-00	M-29-DWF-8/M-29-C-18-A	FOUR_6058	CPP	0.053	0.003	0.050	0.000	0.000
M-29-00	M-29-DWF-8/M-29-C-18-A	FOUR_6059	CPP	0.418	0.057	0.000	0.000	0.361
M-29-00	M-29-DWF-8/M-29-C-18-A	FOUR_6060	CPP	0.230	0.000	0.229	0.000	0.001
M-29-00	M-29-DWF-8/M-29-C-18-A	FOUR_6061	CPP	0.258	0.001	0.252	0.000	0.005
M-29-00	M-29-DWF-8/M-29-C-18-B	FOUR_6062	CPP	0.056	0.000	0.056	0.000	0.000
M-29-00	M-29-DWF-8/M-29-C-18-B	FOUR_6063	CPP	0.075	0.000	0.072	0.000	0.003
M-29-00	M-29-DWF-8/M-29-C-18-B	FOUR_6064	CPP	0.231	0.000	0.231	0.000	0.000
M-29-00	M-29-DWF-23/M-29-C-21	FOUR_6065	CPP	0.060	0.000	0.060	0.000	0.000
M-29-00	M-29-DWF-23/M-29-C-21	FOUR_6066	CPP	0.274	0.000	0.000	0.000	0.274
M-29-00	M-29-DWF-23/M-29-C-21	FOUR_6067	CPP	0.211	0.000	0.000	0.000	0.211
M-29-00	M-29-DWF-23/M-29-C-21	FOUR_6068	CPP	0.092	0.000	0.087	0.000	0.005
M-29-00	M-29-DWF-23/M-29-C-21	FOUR_6069	CPP	0.322	0.000	0.322	0.000	0.000
M-29-00	M-29-DWF-23/M-29-C-21	FOUR_6070	CPP	0.144	0.000	0.003	0.000	0.141
M-29-00	M-29-DWF-23/M-29-C-21	FOUR_6071	CPP	0.738	0.240	0.414	0.000	0.084
M-29-00	M-29-DWF-23/M-29-C-21	FOUR_6072	CPP	0.550	0.000	0.037	0.000	0.513
M-29-00	M-29-DWF-23/M-29-C-21	FOUR_6073	CPP	0.130	0.000	0.130	0.000	0.000
M-29-00	M-29-DWF-21/M-29-S-24-A	FOUR_6074	CPP	1.049	0.000	1.049	0.000	0.000
M-29-00	M-29-DWF-21/M-29-C-24-B	FOUR_6075	CPP	0.886	0.000	0.886	0.000	0.000
M-29-00	M-29-DWF-4/M-29-C-27	FOUR_6076	CPP	0.100	0.100	0.000	0.000	0.000
M-29-00	M-29-DWF-19/M-29-C-6-A	FOUR_6077	CPP	0.176	0.176	0.000	0.000	0.000
M-29-00	M-29-DWF-19/M-29-C-6-A	FOUR_6078	CPP	0.125	0.000	0.125	0.000	0.000
M-29-00	M-29-DWF-19/M-29-C-6-A	FOUR_6079	CPP	0.325	0.002	0.000	0.000	0.323
M-29-00	M-29-DWF-19/M-29-C-6-A	FOUR_6080	CPP	0.063	0.000	0.000	0.000	0.063
M-29-00	M-29-DWF-19/M-29-C-6-A	FOUR_6081	CPP	1.009	1.009	0.000	0.000	0.000
M-29-00	M-29-DWF-19/M-29-C-6-A	FOUR_6082	CPP	0.112	0.001	0.109	0.000	0.002
M-29-00	M-29-DWF-19/M-29-C-6-A	FOUR_6083	CPP	0.105	0.104	0.000	0.000	0.001
M-29-00	M-29-DWF-19/M-29-C-6-A	FOUR_6084	CPP	0.140	0.127	0.011	0.000	0.002
M-29-00	M-29-DWF-19/M-29-C-6-A	FOUR_6085	CPP	0.039	0.038	0.000	0.000	0.001

ALCOSAN POC	Model Subcatchment	Concept Comm / Inst Project UID	BMP Type	Concept Municipal Project Area (acres)	Taxable (acres)	Exempt (acres)	Provisionally Exempt (acres)	Public ROW (acres)
M-29-00	M-29-DWF-19/M-29-C-6-A	FOUR_6086	CPP	0.145	0.143	0.000	0.000	0.002
M-29-00	M-29-DWF-19/M-29-C-6-A	FOUR_6087	CPP	0.133	0.008	0.009	0.000	0.116
M-29-00	M-29-DWF-19/M-29-C-6-A	FOUR_6088	CPP	0.149	0.129	0.000	0.000	0.020
M-29-00	M-29-DWF-19/M-29-C-6-A	FOUR_6089	CPP	0.034	0.000	0.032	0.000	0.002
M-29-00	M-29-DWF-19/M-29-C-6-A	FOUR_6090	CPP	0.034	0.000	0.032	0.000	0.002
M-29-00	M-29-DWF-19/M-29-C-6-A	FOUR_6091	CPP	0.136	0.136	0.000	0.000	0.000
M-29-00	M-29-DWF-1/M-29-C-1	FOUR_6092	CPP	1.197	1.197	0.000	0.000	0.000
M-29-00	M-29-DWF-17/M-29-C-3	FOUR_6093	CPP	0.196	0.180	0.000	0.000	0.016
M-29-00	M-29-DWF-13/M-29-C-8	FOUR_6094	CPP	1.177	0.790	0.000	0.000	0.387
M-29-00	M-29-DWF-13/M-29-C-8	FOUR_6095	CPP	0.116	0.001	0.028	0.000	0.087
M-29-00	M-29-DWF-13/M-29-C-8	FOUR_6096	CPP	0.066	0.066	0.000	0.000	0.000
M-29-00	M-29-DWF-13/M-29-C-8	FOUR_6097	CPP	0.509	0.509	0.000	0.000	0.000
M-29-00	M-29-DWF-13/M-29-C-8	FOUR_6098	CPP	0.294	0.294	0.000	0.000	0.000
M-29-00	M-29-DWF-13/M-29-C-8	FOUR_6099	CPP	0.404	0.352	0.000	0.000	0.052
M-29-00	M-29-DWF-13/M-29-C-8	FOUR_6100	CPP	0.097	0.000	0.034	0.000	0.063
M-29-00	M-29-DWF-8/M-29-C-18-A	FOUR_6101	CPP	0.130	0.020	0.059	0.000	0.051
M-29-00	M-29-DWF-10/M-29-C-17-B	FOUR_6102	CPP	0.084	0.003	0.000	0.000	0.081
M-29-00	M-29-DWF-17/M-29-C-3	FOUR_7001	GR	0.148	0.002	0.000	0.000	0.146
M-29-00	M-29-DWF-13/M-29-C-8	FOUR_7002	GR	0.364	0.335	0.028	0.000	0.001
M-29-00	M-29-DWF-23/M-29-C-21	FOUR_7003	GR	0.166	0.004	0.007	0.000	0.155
M-29-00	M-29-DWF-20/M-29-C-14-B	FOUR_7004	GR	0.141	0.141	0.000	0.000	0.000
M-29-00	M-29-DWF-15/M-29-C-10	FOUR_7005	GR	0.728	0.000	0.050	0.000	0.678
M-29-00	M-29-DWF-6/M-29-C-22-A	FOUR_7006	GR	0.171	0.000	0.171	0.000	0.000
M-29-00	M-29-DWF-20/M-29-C-14-B	FOUR_7007	GR	0.282	0.282	0.000	0.000	0.000
M-29-00	M-29-DWF-8/M-29-C-18-A	FOUR_7008	GR	0.190	0.000	0.001	0.000	0.189
M-29-00	M-29-DWF-23/M-29-C-21	FOUR_7009	GR	0.312	0.057	0.037	0.000	0.218
M-29-00	M-29-DWF-5/M-29-C-23-A	FOUR_7010	GR	0.307	0.020	0.005	0.000	0.282
M-29-00	M-29-DWF-6/M-29-C-22-A	FOUR_7011	GR	1.511	0.000	1.511	0.000	0.000
M-29-00	M-29-DWF-19/M-29-C-6-A	FOUR_7012	GR	0.750	0.176	0.446	0.000	0.128
M-29-00	M-29-DWF-19/M-29-C-6-A	FOUR_7013	GR	0.433	0.000	0.433	0.000	0.000

ALCOSAN POC	Model Subcatchment	Concept Comm / Inst Project UID	BMP Type	Concept Municipal Project Area (acres)	Taxable (acres)	Exempt (acres)	Provisionally Exempt (acres)	Public ROW (acres)
M-29-00	M-29-DWF-19/M-29-C-6-A	FOUR_7014	GR	0.224	0.224	0.000	0.000	0.000
M-29-00	M-29-DWF-19/M-29-C-6-A	FOUR_7015	GR	0.169	0.160	0.000	0.000	0.009
M-29-00	M-29-DWF-19/M-29-C-6-A	FOUR_7016	GR	0.565	0.098	0.000	0.000	0.467
M-29-00	M-29-DWF-23/M-29-C-21	FOUR_7017	GR	0.210	0.005	0.000	0.000	0.205
M-29-00	M-29-DWF-19/M-29-C-6-A	FOUR_7018	GR	0.132	0.129	0.000	0.000	0.003
M-29-00	M-29-DWF-12/M-29-C-12	FOUR_7019	GR	0.116	0.116	0.000	0.000	0.000
M-29-00	M-29-DWF-12/M-29-C-12	FOUR_7020	GR	0.143	0.143	0.000	0.000	0.000
M-29-00	M-29-DWF-15/M-29-C-10	FOUR_7021	GR	0.134	0.000	0.134	0.000	0.000
M-29-00	M-29-DWF-12/M-29-C-12	FOUR_7022	GR	0.163	0.163	0.000	0.000	0.000
M-29-00	M-29-DWF-12/M-29-C-12	FOUR_7023	GR	0.177	0.177	0.000	0.000	0.000
M-29-00	M-29-DWF-15/M-29-C-10	FOUR_7024	GR	0.305	0.000	0.000	0.000	0.305
M-29-00	M-29-DWF-15/M-29-C-10	FOUR_7025	GR	0.243	0.063	0.000	0.000	0.180
M-29-00	M-29-DWF-15/M-29-C-10	FOUR_7026	GR	0.365	0.000	0.365	0.000	0.000
M-29-00	M-29-DWF-12/M-29-C-12	FOUR_7027	GR	0.132	0.132	0.000	0.000	0.000
M-29-00	M-29-DWF-12/M-29-C-12	FOUR_7028	GR	0.634	0.633	0.000	0.000	0.001
M-29-00	M-29-DWF-12/M-29-C-12	FOUR_7029	GR	0.216	0.000	0.088	0.000	0.128
M-29-00	M-29-DWF-8/M-29-C-18-A	FOUR_7030	GR	0.460	0.406	0.013	0.000	0.041
M-29-00	M-29-DWF-3/M-29-C-26	FOUR_7031	GR	0.174	0.174	0.000	0.000	0.000
M-29-00	M-29-DWF-8/M-29-C-18-A	FOUR_7032	GR	0.130	0.000	0.130	0.000	0.000
M-29-00	M-29-DWF-6/M-29-C-22-B	FOUR_7033	GR	0.183	0.183	0.000	0.000	0.000
M-29-00	M-29-DWF-15/M-29-C-10	FOUR_7034	GR	0.209	0.000	0.000	0.209	0.000
M-29-00	M-29-DWF-19/M-29-C-6-A	FOUR_7035	GR	0.260	0.000	0.260	0.000	0.000
M-29-00	M-29-DWF-15/M-29-C-10	FOUR_7036	GR	0.725	0.191	0.000	0.000	0.534
M-29-00	M-29-DWF-15/M-29-C-10	FOUR_7037	GR	0.173	0.094	0.000	0.000	0.079
M-29-00	M-29-DWF-15/M-29-C-10	FOUR_7038	GR	0.279	0.003	0.000	0.000	0.276
M-29-00	M-29-DWF-15/M-29-C-10	FOUR_7039	GR	0.751	0.742	0.000	0.000	0.009
M-29-00	M-29-DWF-8/M-29-C-18-A	FOUR_7040	GR	0.284	0.134	0.146	0.000	0.004
M-29-00	M-29-DWF-23/M-29-C-21	FOUR_7041	GR	0.879	0.000	0.879	0.000	0.000
M-29-00	M-29-DWF-8/M-29-C-18-A	FOUR_7042	GR	0.259	0.000	0.259	0.000	0.000
M-29-00	M-29-DWF-4/M-29-C-27	FOUR_7043	GR	0.151	0.151	0.000	0.000	0.000

ALCOSAN POC	Model Subcatchment	Concept Comm / Inst Project UID	BMP Type	Concept Municipal Project Area (acres)	Taxable (acres)	Exempt (acres)	Provisionally Exempt (acres)	Public ROW (acres)
M-29-00	M-29-DWF-8/M-29-C-18-B	FOUR_7044	GR	0.126	0.000	0.126	0.000	0.000
M-29-00	M-29-DWF-15/M-29-C-10	FOUR_7045	GR	0.328	0.000	0.328	0.000	0.000
M-29-00	M-29-DWF-15/M-29-C-10	FOUR_7046	GR	0.249	0.007	0.000	0.000	0.242
M-29-00	M-29-DWF-15/M-29-C-11	FOUR_7047	GR	0.160	0.160	0.000	0.000	0.000
M-29-00	M-29-DWF-20/M-29-C-14-B	FOUR_7048	GR	0.204	0.204	0.000	0.000	0.000
M-29-00	M-29-DWF-17/M-29-C-3	FOUR_7049	GR	0.152	0.000	0.152	0.000	0.000
M-29-00	M-29-DWF-11/M-29-C-4	FOUR_7050	GR	0.523	0.000	0.523	0.000	0.000
M-29-00	M-29-DWF-8/M-29-C-18-A	FOUR_7051	GR	0.125	0.125	0.000	0.000	0.000
M-29-00	M-29-DWF-13/M-29-C-8	FOUR_7052	GR	0.139	0.018	0.000	0.000	0.121
M-29-00	M-29-DWF-13/M-29-C-8	FOUR_7053	GR	0.232	0.083	0.000	0.000	0.149
M-29-00	M-29-DWF-17/M-29-C-3	FOUR_7054	GR	0.426	0.223	0.203	0.000	0.000
M-29-00	M-29-DWF-17/M-29-C-3	FOUR_7055	GR	0.334	0.050	0.000	0.000	0.284
M-29-00	M-29-DWF-20/M-29-C-14-B	FOUR_7056	GR	0.120	0.120	0.000	0.000	0.000
M-29-00	M-29-DWF-17/M-29-C-3	FOUR_7057	GR	0.264	0.264	0.000	0.000	0.000
M-29-00	M-29-DWF-17/M-29-C-3	FOUR_7058	GR	0.188	0.188	0.000	0.000	0.000
M-29-00	M-29-DWF-8/M-29-C-18-A	FOUR_7059	GR	0.182	0.000	0.182	0.000	0.000
M-29-00	M-29-DWF-20/M-29-C-14-B	FOUR_7060	GR	0.131	0.131	0.000	0.000	0.000
M-29-00	M-29-DWF-8/M-29-C-18-A	FOUR_7061	GR	0.168	0.000	0.152	0.016	0.000
M-29-00	M-29-DWF-8/M-29-C-18-A	FOUR_7062	GR	0.234	0.000	0.234	0.000	0.000
M-29-00	M-29-DWF-13/M-29-C-8	FOUR_7063	GR	0.566	0.558	0.000	0.000	0.008
M-29-00	M-29-DWF-23/M-29-C-21	FOUR_7064	GR	0.391	0.005	0.000	0.000	0.386
M-29-00	M-29-DWF-23/M-29-C-21	FOUR_7065	GR	0.256	0.256	0.000	0.000	0.000
M-29-00	M-29-DWF-23/M-29-C-21	FOUR_7066	GR	0.954	0.000	0.954	0.000	0.000
M-29-00	M-29-DWF-19/M-29-C-6-A	FOUR_7067	GR	0.751	0.103	0.641	0.000	0.007
M-29-00	M-29-DWF-23/M-29-C-21	FOUR_7068	GR	0.411	0.004	0.000	0.000	0.407
M-29-00	M-29-DWF-23/M-29-C-21	FOUR_7069	GR	0.184	0.000	0.184	0.000	0.000
M-29-00	M-29-DWF-5/M-29-C-23-A	FOUR_7070	GR	0.347	0.347	0.000	0.000	0.000
M-29-00	M-29-DWF-8/M-29-C-18-A	FOUR_7071	GR	0.232	0.000	0.004	0.000	0.228
M-29-00	M-29-DWF-8/M-29-C-18-A	FOUR_7072	GR	0.130	0.000	0.130	0.000	0.000
M-29-00	M-29-DWF-8/M-29-C-18-A	FOUR_7073	GR	0.246	0.245	0.000	0.000	0.001

ALCOSAN POC	Model Subcatchment	Concept Comm / Inst Project UID	BMP Type	Concept Municipal Project Area (acres)	Taxable (acres)	Exempt (acres)	Provisionally Exempt (acres)	Public ROW (acres)
M-29-00	M-29-DWF-23/M-29-C-21	FOUR_7074	GR	0.899	0.006	0.006	0.000	0.887
M-29-00	M-29-DWF-6/M-29-C-22-A	FOUR_7075	GR	0.743	0.000	0.409	0.000	0.334
M-29-00	M-29-DWF-8/M-29-C-18-B	FOUR_7076	GR	0.653	0.018	0.000	0.000	0.635
M-29-00	M-29-DWF-8/M-29-C-18-A	FOUR_7077	GR	0.117	0.018	0.000	0.000	0.099
M-29-00	M-29-DWF-8/M-29-C-18-A	FOUR_7078	GR	0.663	0.000	0.437	0.000	0.226
M-29-00	M-29-DWF-19/M-29-C-6-A	FOUR_7079	GR	0.534	0.366	0.168	0.000	0.000
M-29-00	M-29-DWF-23/M-29-C-21	FOUR_7080	GR	0.246	0.004	0.004	0.000	0.238
M-29-00	M-29-DWF-23/M-29-C-21	FOUR_7081	GR	0.301	0.007	0.000	0.000	0.294
M-29-00	M-29-DWF-19/M-29-C-6-A	FOUR_7082	GR	0.233	0.224	0.000	0.000	0.009
M-29-00	M-29-DWF-23/M-29-C-21	FOUR_7083	GR	0.367	0.000	0.367	0.000	0.000
M-29-00	M-29-DWF-8/M-29-C-18-A	FOUR_7084	GR	0.457	0.433	0.000	0.000	0.024
M-29-00	M-29-DWF-6/M-29-C-22-B	FOUR_7085	GR	0.137	0.000	0.137	0.000	0.000
M-29-00	M-29-DWF-6/M-29-C-22-B	FOUR_7086	GR	0.136	0.000	0.136	0.000	0.000
M-29-00	M-29-DWF-6/M-29-C-22-B	FOUR_7087	GR	0.769	0.000	0.769	0.000	0.000
M-29-00	M-29-DWF-8/M-29-C-18-A	FOUR_7088	GR	0.603	0.000	0.498	0.000	0.105
M-29-00	M-29-DWF-23/M-29-C-21	FOUR_7089	GR	0.364	0.000	0.364	0.000	0.000
M-29-00	M-29-DWF-8/M-29-C-18-B	FOUR_7090	GR	0.124	0.000	0.118	0.000	0.006
M-29-00	M-29-DWF-8/M-29-C-18-B	FOUR_7091	GR	0.121	0.000	0.121	0.000	0.000
M-29-00	M-29-DWF-22/M-29-C-20	FOUR_7092	GR	0.463	0.000	0.180	0.000	0.283
M-29-00	M-29-DWF-13/M-29-C-8	FOUR_7093	GR	0.204	0.203	0.000	0.000	0.001
M-29-00	M-29-DWF-6/M-29-C-22-A	FOUR_7094	GR	0.451	0.000	0.451	0.000	0.000
M-29-00	M-29-DWF-8/M-29-C-18-B	FOUR_7095	GR	0.178	0.000	0.101	0.000	0.077
M-29-00	M-29-DWF-23/M-29-C-21	FOUR_7096	GR	0.159	0.000	0.159	0.000	0.000
M-29-00	M-29-DWF-6/M-29-C-22-A	FOUR_7097	GR	0.194	0.000	0.002	0.000	0.192
M-29-00	M-29-DWF-8/M-29-C-18-B	FOUR_7098	GR	0.197	0.000	0.193	0.000	0.004
M-29-00	M-29-DWF-5/M-29-C-23-C	FOUR_7099	GR	0.760	0.000	0.760	0.000	0.000
M-29-00	M-29-DWF-8/M-29-C-18-B	FOUR_7100	GR	0.279	0.279	0.000	0.000	0.000
M-29-00	M-29-DWF-8/M-29-C-18-A	FOUR_7101	GR	0.468	0.025	0.098	0.000	0.345
M-29-00	M-29-DWF-5/M-29-C-23-C	FOUR_7102	GR	0.665	0.000	0.665	0.000	0.000
M-29-00	M-29-DWF-22/M-29-C-20	FOUR_7103	GR	1.737	0.000	1.482	0.000	0.255

ALCOSAN POC	Model Subcatchment	Concept Comm / Inst Project UID	BMP Type	Concept Municipal Project Area (acres)	Taxable (acres)	Exempt (acres)	Provisionally Exempt (acres)	Public ROW (acres)
M-29-00	M-29-DWF-8/M-29-C-18-A	FOUR_7104	GR	0.311	0.000	0.311	0.000	0.000
M-29-00	M-29-DWF-6/M-29-C-22-B	FOUR_7105	GR	0.338	0.000	0.338	0.000	0.000
M-29-00	M-29-DWF-8/M-29-C-18-B	FOUR_7106	GR	0.170	0.000	0.147	0.000	0.023
M-29-00	M-29-DWF-8/M-29-C-18-A	FOUR_7107	GR	0.269	0.000	0.250	0.000	0.019
M-29-00	M-29-DWF-13/M-29-C-8	FOUR_7108	GR	0.347	0.347	0.000	0.000	0.000
M-29-00	M-29-DWF-13/M-29-C-8	FOUR_7109	GR	0.353	0.353	0.000	0.000	0.000
M-29-00	M-29-DWF-22/M-29-C-20	FOUR_7110	GR	0.235	0.000	0.235	0.000	0.000
M-29-00	M-29-DWF-6/M-29-C-22-A	FOUR_7111	GR	1.050	0.000	1.040	0.000	0.010
M-29-00	M-29-DWF-23/M-29-C-21	FOUR_7112	GR	0.249	0.000	0.249	0.000	0.000
M-29-00	M-29-DWF-5/M-29-C-23-C	FOUR_7113	GR	0.657	0.000	0.657	0.000	0.000
M-29-00	M-29-DWF-6/M-29-C-22-A	FOUR_7114	GR	6.944	0.000	0.761	0.000	6.183
M-29-00	M-29-DWF-22/M-29-C-20	FOUR_7115	GR	0.152	0.000	0.152	0.000	0.000
M-29-00	M-29-DWF-10/M-29-C-17-B	FOUR_7116	GR	0.155	0.019	0.000	0.002	0.134
M-29-00	M-29-DWF-8/M-29-C-18-A	FOUR_7117	GR	0.153	0.145	0.000	0.000	0.008
M-29-00	M-29-DWF-8/M-29-C-18-A	FOUR_7118	GR	0.632	0.000	0.632	0.000	0.000
M-29-00	M-29-DWF-6/M-29-C-22-A	FOUR_7119	GR	0.895	0.000	0.895	0.000	0.000
M-29-00	M-29-DWF-22/M-29-C-20	FOUR_7120	GR	0.970	0.000	0.335	0.000	0.635
M-29-00	M-29-DWF-9/M-29-C-19-A	FOUR_7121	GR	0.331	0.000	0.331	0.000	0.000
M-29-00	M-29-DWF-10/M-29-C-17-B	FOUR_7122	GR	0.799	0.000	0.799	0.000	0.000
M-29-00	M-29-DWF-9/M-29-C-19-B	FOUR_7123	GR	0.142	0.000	0.142	0.000	0.000
M-29-00	M-29-DWF-6/M-29-C-22-A	FOUR_7124	GR	0.115	0.000	0.000	0.000	0.115
M-29-00	M-29-DWF-5/M-29-C-23-A	FOUR_7125	GR	0.711	0.000	0.053	0.000	0.658
M-29-00	M-29-DWF-9/M-29-C-19-B	FOUR_7126	GR	1.069	0.000	1.067	0.000	0.002
M-29-00	M-29-DWF-22/M-29-C-20	FOUR_7127	GR	0.216	0.000	0.216	0.000	0.000
M-29-00	M-29-DWF-9/M-29-C-19-A	FOUR_7128	GR	0.930	0.000	0.930	0.000	0.000
M-29-00	M-29-DWF-9/M-29-C-19-A	FOUR_7129	GR	0.323	0.000	0.323	0.000	0.000
M-29-00	M-29-DWF-9/M-29-C-19-A	FOUR_7130	GR	0.237	0.237	0.000	0.000	0.000
M-29-00	M-29-DWF-4/M-29-C-27	FOUR_7131	GR	0.133	0.133	0.000	0.000	0.000
M-29-00	M-29-DWF-5/M-29-C-23-B	FOUR_7132	GR	0.289	0.000	0.027	0.000	0.262
M-29-00	M-29-DWF-5/M-29-C-23-A	FOUR_7133	GR	1.618	0.000	0.044	0.000	1.574

ALCOSAN POC	Model Subcatchment	Concept Comm / Inst Project UID	BMP Type	Concept Municipal Project Area (acres)	Taxable (acres)	Exempt (acres)	Provisionally Exempt (acres)	Public ROW (acres)
M-29-00	M-29-DWF-5/M-29-C-23-A	FOUR_7134	GR	0.575	0.000	0.575	0.000	0.000
M-29-00	M-29-DWF-19/M-29-C-6-A	FOUR_7135	GR	0.357	0.227	0.000	0.000	0.130
M-29-00	M-29-DWF-19/M-29-C-6-A	FOUR_7136	GR	0.123	0.066	0.000	0.000	0.057
M-29-00	M-29-DWF-19/M-29-C-6-A	FOUR_7137	GR	0.334	0.076	0.000	0.000	0.258
M-29-00	M-29-DWF-22/M-29-C-20	FOUR_7138	GR	0.127	0.000	0.127	0.000	0.000
M-29-00	M-29-DWF-4/M-29-C-27	FOUR_7139	GR	0.134	0.134	0.000	0.000	0.000
M-29-00	M-29-DWF-19/M-29-C-6-A	FOUR_7140	GR	0.122	0.018	0.000	0.000	0.104
M-29-00	M-29-DWF-19/M-29-C-6-A	FOUR_7141	GR	0.433	0.000	0.369	0.000	0.064
M-29-00	M-29-DWF-19/M-29-C-6-A	FOUR_7142	GR	0.293	0.138	0.000	0.000	0.155
M-29-00	M-29-DWF-19/M-29-C-6-A	FOUR_7143	GR	1.136	0.536	0.536	0.000	0.064
M-29-00	M-29-DWF-19/M-29-C-6-A	FOUR_7144	GR	0.409	0.353	0.000	0.000	0.056
M-29-00	M-29-DWF-19/M-29-C-6-A	FOUR_7145	GR	0.535	0.172	0.000	0.000	0.363
M-29-00	M-29-DWF-19/M-29-C-6-A	FOUR_7146	GR	0.281	0.157	0.000	0.000	0.124
M-29-00	M-29-DWF-19/M-29-C-6-A	FOUR_7147	GR	0.199	0.199	0.000	0.000	0.000
M-29-00	M-29-DWF-19/M-29-C-6-A	FOUR_7148	GR	0.284	0.009	0.000	0.000	0.275
M-29-00	M-29-DWF-19/M-29-C-6-A	FOUR_7149	GR	0.242	0.002	0.000	0.000	0.240
M-29-00	M-29-DWF-19/M-29-C-6-A	FOUR_7150	GR	0.121	0.000	0.000	0.000	0.121
M-29-00	M-29-DWF-19/M-29-C-6-A	FOUR_7151	GR	0.118	0.018	0.017	0.000	0.083
M-29-00	M-29-DWF-19/M-29-C-6-A	FOUR_7152	GR	0.160	0.021	0.000	0.000	0.139
M-29-00	M-29-DWF-19/M-29-C-6-A	FOUR_7153	GR	0.159	0.157	0.002	0.000	0.000
M-29-00	M-29-DWF-19/M-29-C-6-A	FOUR_7154	GR	0.304	0.000	0.009	0.000	0.295
M-29-00	M-29-DWF-19/M-29-C-6-A	FOUR_7155	GR	0.215	0.016	0.007	0.000	0.192
M-29-00	M-29-DWF-19/M-29-C-6-A	FOUR_7156	GR	0.450	0.261	0.000	0.000	0.189
M-29-00	M-29-DWF-19/M-29-C-6-A	FOUR_7157	GR	0.477	0.004	0.000	0.000	0.473
M-29-00	M-29-DWF-15/M-29-C-10	FOUR_7158	GR	0.334	0.000	0.334	0.000	0.000
M-29-00	M-29-DWF-12/M-29-C-12	FOUR_7159	GR	0.182	0.182	0.000	0.000	0.000
M-29-00	M-29-DWF-14/M-29-C-9	FOUR_7160	GR	1.144	0.000	1.144	0.000	0.000
M-29-00	M-29-DWF-19/M-29-C-6-A	FOUR_7161	GR	0.388	0.005	0.000	0.000	0.383
M-29-00	M-29-DWF-1/M-29-C-1	FOUR_7162	GR	0.150	0.150	0.000	0.000	0.000
M-29-00	M-29-DWF-11/M-29-C-4	FOUR_7163	GR	0.143	0.007	0.000	0.000	0.136

ALCOSAN POC	Model Subcatchment	Concept Comm / Inst Project UID	BMP Type	Concept Municipal Project Area (acres)	Taxable (acres)	Exempt (acres)	Provisionally Exempt (acres)	Public ROW (acres)
M-29-00	M-29-DWF-15/M-29-C-10	FOUR_7164	GR	0.142	0.142	0.000	0.000	0.000
M-29-00	M-29-DWF-15/M-29-C-10	FOUR_7165	GR	1.668	0.000	1.668	0.000	0.000
M-29-00	M-29-DWF-8/M-29-C-18-B	FOUR_7166	GR	0.553	0.005	0.000	0.000	0.548
M-29-00	M-29-DWF-6/M-29-C-22-A	FOUR_7167	GR	0.436	0.000	0.436	0.000	0.000
M-29-00	M-29-DWF-19/M-29-C-6-A	FOUR_7168	GR	0.169	0.011	0.000	0.000	0.158
M-29-00	M-29-DWF-19/M-29-C-6-A	FOUR_7169	GR	0.436	0.435	0.000	0.000	0.001
M-29-00	M-29-DWF-15/M-29-C-10	FOUR_7170	GR	0.198	0.198	0.000	0.000	0.000
M-29-00	M-29-DWF-15/M-29-C-10	FOUR_7171	GR	0.278	0.000	0.278	0.000	0.000
M-29-00	M-29-DWF-12/M-29-C-12	FOUR_7172	GR	0.156	0.156	0.000	0.000	0.000
M-29-00	M-29-DWF-12/M-29-C-12	FOUR_7173	GR	0.158	0.158	0.000	0.000	0.000
M-29-00	M-29-DWF-4/M-29-C-27	FOUR_7174	GR	0.177	0.169	0.000	0.000	0.008
M-29-00	M-29-DWF-20/M-29-C-14-B	FOUR_7175	GR	0.196	0.000	0.196	0.000	0.000
M-29-00	M-29-DWF-15/M-29-C-10	FOUR_7176	GR	0.143	0.000	0.143	0.000	0.000
M-29-00	M-29-DWF-15/M-29-C-10	FOUR_7177	GR	0.192	0.189	0.000	0.000	0.003
M-29-00	M-29-DWF-15/M-29-C-10	FOUR_7178	GR	0.484	0.477	0.000	0.000	0.007
M-29-00	M-29-DWF-19/M-29-C-6-A	FOUR_7179	GR	0.280	0.051	0.008	0.000	0.221
M-29-00	M-29-DWF-15/M-29-C-10	FOUR_7180	GR	0.209	0.209	0.000	0.000	0.000
M-29-00	M-29-DWF-15/M-29-C-10	FOUR_7181	GR	0.213	0.000	0.213	0.000	0.000
M-29-00	M-29-DWF-23/M-29-C-21	FOUR_7182	GR	0.208	0.000	0.208	0.000	0.000
M-29-00	M-29-DWF-23/M-29-C-21	FOUR_7183	GR	0.200	0.000	0.200	0.000	0.000
M-29-00	M-29-DWF-6/M-29-C-22-A	FOUR_7184	GR	0.486	0.000	0.477	0.000	0.009
M-29-00	M-29-DWF-8/M-29-C-18-B	FOUR_7185	GR	0.124	0.000	0.124	0.000	0.000
M-29-00	M-29-DWF-10/M-29-C-17-B	FOUR_7186	GR	0.155	0.155	0.000	0.000	0.000
M-29-00	M-29-DWF-10/M-29-C-17-B	FOUR_7187	GR	0.171	0.016	0.000	0.000	0.155
M-29-00	M-29-DWF-3/M-29-C-26	FOUR_8001	SRPP	0.155	0.000	0.000	0.000	0.155
M-29-00	M-29-DWF-15/M-29-C-11	FOUR_8002	SRPP	0.048	0.000	0.000	0.000	0.048
M-29-00	M-29-DWF-15/M-29-C-10	FOUR_8003	SRPP	0.539	0.000	0.000	0.000	0.539
M-29-00	M-29-DWF-15/M-29-C-10	FOUR_8004	SRPP	0.313	0.000	0.000	0.000	0.313
M-29-00	M-29-DWF-19/M-29-C-6-A	FOUR_8005	SRPP	1.569	0.000	0.000	0.000	1.569
M-29-00	M-29-DWF-15/M-29-C-10	FOUR_8006	SRPP	0.086	0.000	0.000	0.000	0.086

ALCOSAN POC	Model Subcatchment	Concept Comm / Inst Project UID	BMP Type	Concept Municipal Project Area (acres)	Taxable (acres)	Exempt (acres)	Provisionally Exempt (acres)	Public ROW (acres)
M-29-00	M-29-DWF-15/M-29-C-10	FOUR_8007	SRPP	1.067	0.000	0.000	0.000	1.067
M-29-00	M-29-DWF-15/M-29-C-10	FOUR_8008	SRPP	0.497	0.000	0.000	0.000	0.497
M-29-00	M-29-DWF-15/M-29-C-10	FOUR_8009	SRPP	1.451	0.000	0.000	0.000	1.451
M-29-00	M-29-DWF-15/M-29-C-10	FOUR_8010	SRPP	0.172	0.000	0.000	0.000	0.172
M-29-00	M-29-DWF-15/M-29-C-10	FOUR_8011	SRPP	1.130	0.000	0.005	0.000	1.125
M-29-00	M-29-DWF-15/M-29-C-10	FOUR_8012	SRPP	0.424	0.000	0.000	0.000	0.424
M-29-00	M-29-DWF-22/M-29-C-20	FOUR_8013	SRPP	0.757	0.000	0.000	0.000	0.757
M-29-00	M-29-DWF-9/M-29-C-19-A	FOUR_8014	SRPP	0.744	0.000	0.011	0.000	0.733
M-29-00	M-29-DWF-9/M-29-C-19-A	FOUR_8015	SRPP	0.314	0.000	0.000	0.000	0.314
M-29-00	M-29-DWF-16/M-29-S-13-B	FOUR_8016	SRPP	0.255	0.000	0.000	0.000	0.255
M-29-00	M-29-DWF-16/M-29-C-13-A	FOUR_8017	SRPP	0.478	0.000	0.000	0.000	0.478
M-29-00	M-29-DWF-20/M-29-C-14-B	FOUR_8018	SRPP	0.291	0.000	0.000	0.000	0.291
M-29-00	M-29-DWF-20/M-29-C-14-B	FOUR_8019	SRPP	0.189	0.000	0.000	0.000	0.189
M-29-00	M-29-DWF-20/M-29-C-14-B	FOUR_8020	SRPP	0.328	0.000	0.000	0.000	0.328
M-29-00	M-29-DWF-17/M-29-C-3	FOUR_8021	SRPP	0.408	0.000	0.000	0.000	0.408
M-29-00	M-29-DWF-16/M-29-C-13-A	FOUR_8022	SRPP	1.667	0.000	0.000	0.000	1.667
M-29-00	M-29-DWF-16/M-29-C-13-A	FOUR_8023	SRPP	0.641	0.002	0.000	0.000	0.639
M-29-00	M-29-DWF-12/M-29-C-12	FOUR_8024	SRPP	0.394	0.000	0.000	0.000	0.394
M-29-00	M-29-DWF-5/M-29-C-23-A	FOUR_8025	SRPP	0.712	0.002	0.015	0.000	0.695
M-29-00	M-29-DWF-6/M-29-C-22-A	FOUR_8026	SRPP	1.718	0.026	0.038	0.000	1.654
M-29-00	M-29-DWF-6/M-29-C-22-A	FOUR_8027	SRPP	0.844	0.000	0.000	0.000	0.844
M-29-00	M-29-DWF-23/M-29-C-21	FOUR_8028	SRPP	1.680	0.000	0.033	0.000	1.647
M-29-00	M-29-DWF-23/M-29-C-21	FOUR_8029	SRPP	1.343	0.000	0.000	0.000	1.343
M-29-00	M-29-DWF-23/M-29-C-21	FOUR_8030	SRPP	1.890	0.000	0.037	0.000	1.853
M-29-00	M-29-DWF-23/M-29-C-21	FOUR_8031	SRPP	1.140	0.000	0.130	0.000	1.010
M-29-00	M-29-DWF-5/M-29-C-23-A	FOUR_8032	SRPP	0.397	0.014	0.000	0.000	0.383
M-29-00	M-29-DWF-5/M-29-C-23-A	FOUR_8033	SRPP	0.280	0.000	0.000	0.000	0.280
M-29-00	M-29-DWF-5/M-29-C-23-A	FOUR_8034	SRPP	0.167	0.000	0.000	0.000	0.167
M-29-00	M-29-DWF-5/M-29-C-23-A	FOUR_8035	SRPP	0.620	0.000	0.000	0.000	0.620
M-29-00	M-29-DWF-11/M-29-S-16	FOUR_8036	SRPP	2.197	0.000	0.000	0.000	2.197

ALCOSAN POC	Model Subcatchment	Concept Comm / Inst Project UID	BMP Type	Concept Municipal Project Area (acres)	Taxable (acres)	Exempt (acres)	Provisionally Exempt (acres)	Public ROW (acres)
M-29-00	M-29-DWF-6/M-29-C-22-A	FOUR_8037	SRPP	0.955	0.000	0.000	0.000	0.955
M-29-00	M-29-DWF-6/M-29-C-22-A	FOUR_8038	SRPP	0.796	0.000	0.000	0.000	0.796
M-29-00	M-29-DWF-6/M-29-C-22-A	FOUR_8039	SRPP	0.771	0.000	0.083	0.000	0.688
M-29-00	M-29-DWF-6/M-29-C-22-A	FOUR_8040	SRPP	1.097	0.000	0.009	0.000	1.088
M-29-00	M-29-DWF-5/M-29-C-23-B	FOUR_8041	SRPP	0.078	0.000	0.000	0.000	0.078
M-29-00	M-29-DWF-8/M-29-C-18-A	FOUR_8042	SRPP	2.560	0.003	0.005	0.000	2.552
M-29-00	M-29-DWF-8/M-29-C-18-A	FOUR_8043	SRPP	0.888	0.000	0.000	0.000	0.888
M-29-00	M-29-DWF-8/M-29-C-18-B	FOUR_8044	SRPP	0.595	0.000	0.000	0.000	0.595
M-29-00	M-29-DWF-8/M-29-C-18-A	FOUR_8045	SRPP	1.402	0.000	0.094	0.000	1.308
M-29-00	M-29-DWF-8/M-29-C-18-A	FOUR_8046	SRPP	0.298	0.000	0.000	0.000	0.298
M-29-00	M-29-DWF-8/M-29-C-18-B	FOUR_8047	SRPP	1.062	0.015	0.000	0.000	1.047
M-29-00	M-29-DWF-23/M-29-C-21	FOUR_8048	SRPP	0.600	0.000	0.000	0.000	0.600
M-29-00	M-29-DWF-10/M-29-C-17-A	FOUR_8049	SRPP	0.407	0.000	0.000	0.000	0.407
M-29-00	M-29-DWF-10/M-29-C-17-A	FOUR_8050	SRPP	0.323	0.000	0.000	0.000	0.323
M-29-00	M-29-DWF-10/M-29-C-17-A	FOUR_8051	SRPP	1.542	0.000	0.000	0.000	1.542
M-29-00	M-29-DWF-10/M-29-C-17-A	FOUR_8052	SRPP	1.399	0.001	0.000	0.000	1.398
M-29-00	M-29-DWF-10/M-29-C-17-B	FOUR_8053	SRPP	0.908	0.000	0.000	0.000	0.908
M-29-00	M-29-DWF-10/M-29-C-17-B	FOUR_8054	SRPP	0.343	0.000	0.000	0.000	0.343
M-29-00	M-29-DWF-10/M-29-C-17-B	FOUR_8055	SRPP	1.505	0.000	0.000	0.000	1.505
M-29-00	M-29-DWF-19/M-29-C-6-A	FOUR_8056	SRPP	1.391	0.000	0.000	0.000	1.391
M-29-00	M-29-DWF-10/M-29-C-17-B	FOUR_8057	SRPP	0.677	0.000	0.000	0.000	0.677
M-29-00	M-29-DWF-10/M-29-C-17-B	FOUR_8058	SRPP	0.353	0.000	0.000	0.000	0.353
M-29-00	M-29-DWF-10/M-29-C-17-B	FOUR_8059	SRPP	0.176	0.000	0.000	0.000	0.176
M-29-00	M-29-DWF-21/M-29-S-24-A	FOUR_8060	SRPP	2.153	0.000	2.153	0.000	0.000
M-29-00	M-29-DWF-21/M-29-S-24-A	FOUR_8061	SRPP	1.044	0.000	1.044	0.000	0.000
M-29-00	M-29-DWF-21/M-29-S-24-A	FOUR_8062	SRPP	0.660	0.000	0.660	0.000	0.000
M-29-00	M-29-DWF-19/M-29-S-6-B	FOUR_8063	SRPP	0.792	0.000	0.792	0.000	0.000
M-29-00	M-29-DWF-14/M-29-C-9	FOUR_8064	SRPP	1.215	0.000	0.000	0.000	1.215
M-29-00	M-29-DWF-14/M-29-C-9	FOUR_8065	SRPP	0.510	0.000	0.000	0.000	0.510
M-29-00	M-29-DWF-14/M-29-C-9	FOUR_8066	SRPP	0.529	0.000	0.000	0.000	0.529

ALCOSAN POC	Model Subcatchment	Concept Comm / Inst Project UID	BMP Type	Concept Municipal Project Area (acres)	Taxable (acres)	Exempt (acres)	Provisionally Exempt (acres)	Public ROW (acres)
M-29-00	M-29-DWF-21/M-29-S-24-A	FOUR_8067	SRPP	0.110	0.000	0.110	0.000	0.000
M-29-00	M-29-S-25	FOUR_8068	SRPP	0.277	0.000	0.277	0.000	0.000
M-29-00	M-29-DWF-21/M-29-C-24-B	FOUR_8069	SRPP	0.782	0.000	0.782	0.000	0.000
M-29-00	M-29-DWF-19/M-29-C-6-A	FOUR_8070	SRPP	2.747	0.000	0.005	0.000	2.742
M-29-00	M-29-DWF-2/M-29-C-15	FOUR_8071	SRPP	0.870	0.000	0.000	0.000	0.870
M-29-00	M-29-DWF-13/M-29-C-8	FOUR_8072	SRPP	0.967	0.000	0.000	0.000	0.967
M-29-00	M-29-DWF-13/M-29-C-8	FOUR_8073	SRPP	1.117	0.004	0.000	0.000	1.113
M-29-00	M-29-DWF-13/M-29-C-8	FOUR_8074	SRPP	2.365	0.001	0.002	0.000	2.362
M-29-00	M-29-DWF-14/M-29-C-9	FOUR_8075	SRPP	0.404	0.000	0.000	0.000	0.404
M-29-00	M-29-DWF-19/M-29-C-6-A	FOUR_8076	SRPP	0.426	0.000	0.000	0.000	0.426
M-29-00	M-29-DWF-19/M-29-C-6-A	FOUR_8077	SRPP	1.968	0.000	0.000	0.000	1.968
M-29-00	M-29-DWF-19/M-29-C-6-A	FOUR_8078	SRPP	0.550	0.000	0.000	0.000	0.550
M-29-00	M-29-DWF-19/M-29-C-6-A	FOUR_8079	SRPP	0.255	0.000	0.000	0.000	0.255

