

5.1 Study Area 1 – Braddock Area

These findings apply to ALCOSAN Points of Connection M-51 through M-60 (excluding M-59), which include combined sewer systems in Braddock Hills Borough, Braddock Borough, North Braddock Borough, Rankin Borough, and Swissvale Borough.

Braddock - BMP GIS Features

The SUSTAIN BMP siting tool analysis resulted in identification of a total of 3,181 BMP GIS Features covering 335 acres, which consisted of the following:

Table 5.1-1 - TOTAL SUSTAIN BMP Features Output

SUSTAIN BMP Feature Type	Number of Features	Area of BMP Features (Acres)
Permeable Pavement	688	43
Bioretention	871	114
Infiltration Basin/Trenches	307	37
Vegetated Filter Strips	427	80
Grass Swales	834	61
Constructed Wetlands	54	1

Locations of all identified BMP GIS features are presented on the SUSTAIN BMP Features Figure.

Braddock - Concept Municipal GSI Projects

Based on the BMP features, 269 concept Municipal GSI Projects were identified covering 36 total acres with a corresponding drainage area delineation of 465 total acres and consisted of the following:

Table 5.1-2 - Summary of Identified Concept Municipal GSI Projects

Concept GSI Technology	Number of Projects	GSI Project Area (Acres)	Project Drainage Area (Acres)
Permeable Pavement	128	25	284
Bioretention	129	11	155
Infiltration Basin/Trenches	12	1	26
Vegetated Filter Strips	0	0	0
Grass Swales	0	0	0
Constructed Wetlands	0	0	0

Project statistics including ALCOSAN POC, model subcatchment, BMP type, project area, area of project inside and outside of the public right-of-way, tributary drainage area, and tributary impervious drainage area are provided in the Concept Municipal Projects Table. Locations of all identified Concept Municipal GSI projects are presented in the Concept Municipal GSI Projects Figure (1) and the corresponding delineated tributary drainage areas are presented by BMP in the Individual Project Drainage Area Figures (3).

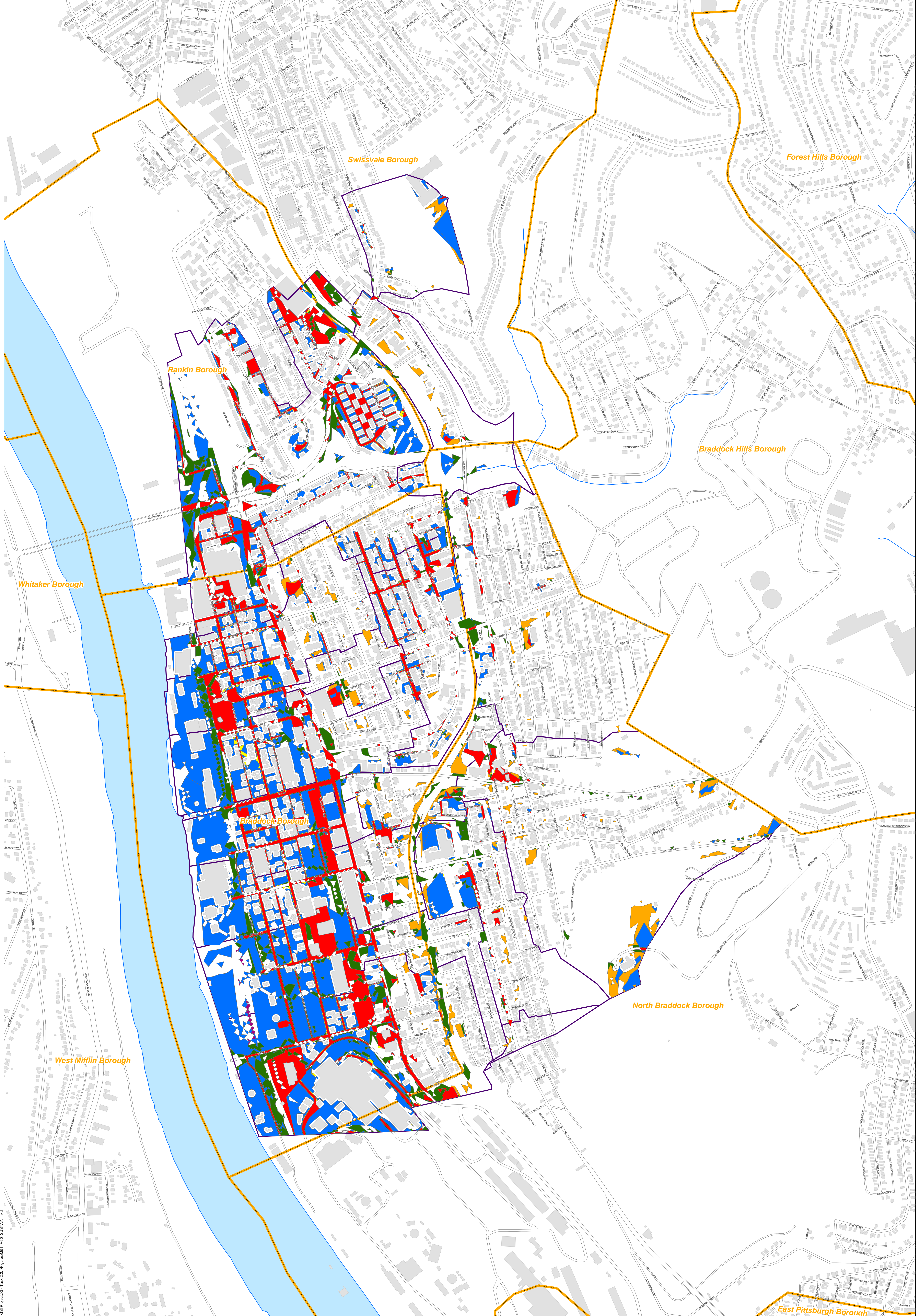
Braddock - Concept Commercial/Institutional and Special Case GSI Projects

Based on the BMP features, 133 concept Commercial/Institutional and Special Case GSI Projects were identified covering 43 total acres and consisted of the following:

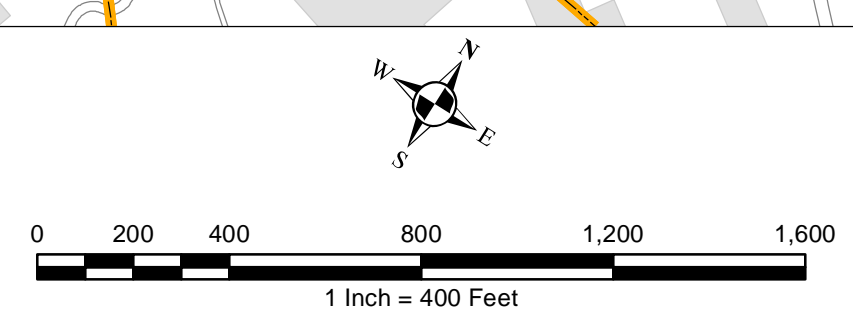
Table 5.1-3 - Summary of Identified Concept Commercial/Institutional and Special Case GSI Projects

Concept GSI Technology or Special Case Project Category	Number of Projects	GSI Project Area (Acres)
Commercial/Institutional Permeable Pavement	50	14
Commercial/Institutional Green Roofs	69	20
State Route Permeable Pavement	14	9
Busway Permeable Pavement	0	0
Busway Bioretention	0	0

Project statistics including ALCOSAN POC, model subcatchment, BMP type, project area, area of project taxable, exempt, provisionally exempt and in the public right-of-way are provided in Concept Commercial / Institutional GSI Projects Table. Locations of all identified Concept Commercial / Institutional GSI projects are presented in the Concept Commercial / Institutional GSI Projects Figure (1).



- Permeable Pavement
- Vegetated Filter Strips
- Combined Sewer Subcatchment
- Bioretention Basin
- Grass Swales
- Municipal Boundaries
- Infiltration Basin / Trench
- Constructed Wetlands



ALCOSAN GSI Project
M-51 through M-60
SUSTAIN BMP Features

Path: I:\PROJ\340346-05_ALCOSAN_GSI_Proj\03 - Task 2.1\Figures\M51_M60_SUSTAIN.mxd

Braddock Concept Municipal Projects: Individual Drainage Areas
March 30, 2014
Revised October 7, 2014

*Note: The drainage area presented in this table is representative of the individual drainage area tributary to each concept municipal project without any revisions to account for overlap, without engineering judgment revisions applied, and without the drainage areas being clipped to their corresponding model subcatchments.

ALCOSAN POC	Model Subcatchment	Concept Municipal Project UID	BMP Type	Concept Municipal Project Area (acres)	Public ROW or Parcel		Concept Municipal Project Individual Drainage Area (acres)*	Concept Municipal Project Individual Project Impervious Drainage Area (acres)*
					Area of Municipal Project in Public ROW (acres)	Area of Municipal Project outside of Public ROW (acres)		
M-60	M-60-00_S1	BRAD_1	PP	0.648	0.648	0.000	4.831	3.726
M-60	M-60-00_S1	BRAD_2	PP	0.153	0.143	0.010	0.306	0.262
M-58	M-58-00_S1	BRAD_3	PP	0.277	0.277	0.000	0.903	0.304
M-60	M-60-00_S1	BRAD_4	PP	0.191	0.191	0.000	0.645	0.290
M-58	M-58-00_S1	BRAD_5	PP	0.210	0.207	0.003	2.493	2.261
M-60	M-60-00_S1	BRAD_6	PP	0.195	0.195	0.000	0.883	0.612
M-58	M-58-00_S1	BRAD_7	PP	0.495	0.495	0.000	4.118	3.109
M-57	M-57-00-M1_S1	BRAD_8	PP	0.319	0.319	0.000	2.838	1.493
M-58	M-58-00_S1	BRAD_9	PP	0.235	0.235	0.000	1.400	1.376
M-57	M-57-00-M1_S1	BRAD_10	PP	0.138	0.121	0.017	0.973	0.421
M-58	M-58-00_S1	BRAD_11	PP	0.151	0.127	0.024	1.050	0.234
M-57	M-57-00-M1_S1	BRAD_12	PP	0.226	0.226	0.000	2.021	0.862
M-58	M-58-00_S1	BRAD_13	PP	0.217	0.217	0.000	1.205	0.263
M-58	M-58-00_S1	BRAD_14	PP	0.117	0.072	0.045	2.262	0.646
M-57	M-56-00-M16_S1	BRAD_15	PP	0.251	0.251	0.000	5.667	2.737
M-57	M-57-00-M1_S1	BRAD_16	PP	0.229	0.229	0.000	4.433	1.997
M-56	M-56-00-M16_S1	BRAD_17	PP	0.635	0.635	0.000	6.426	2.736
M-57	M-57-00-M1_S1	BRAD_18	PP	0.047	0.047	0.000	0.233	0.094
M-56	M-56-00-M16_S1	BRAD_19	PP	0.024	0.024	0.000	0.321	0.128
M-56	M-56-00-M16_S1	BRAD_20	PP	0.254	0.254	0.000	1.848	0.788
M-56	M-56-00-M16_S1	BRAD_21	PP	0.142	0.142	0.000	3.247	1.615
M-56	M-56-00-M16_S1	BRAD_22	PP	0.128	0.128	0.000	1.743	0.456
M-57	M-57-00-M1_S1	BRAD_23	PP	0.452	0.452	0.000	8.201	4.305
M-56	M-56-00-M16_S1	BRAD_24	PP	0.059	0.058	0.001	0.617	0.160
M-57	M-57-00-M1_S1	BRAD_25	PP	0.066	0.056	0.010	0.454	0.049
M-56	M-56-00-M16_S1	BRAD_26	PP	0.071	0.002	0.069	0.077	0.067
M-57	M-57-00-M1_S1	BRAD_27	PP	0.073	0.000	0.073	0.083	0.067
M-56	M-56-00-M16_S1	BRAD_28	PP	0.057	0.057	0.000	0.276	0.141
M-56	M-56-00-M16_S1	BRAD_29	PP	0.092	0.092	0.000	0.720	0.297
M-56	M-56-00-M16_S1	BRAD_30	PP	0.163	0.163	0.000	2.082	1.118
M-56	M-56-00-M16_S1	BRAD_31	PP	0.070	0.070	0.000	0.653	0.300
M-56	M-56-00-M16_S1	BRAD_32	PP	0.045	0.045	0.000	0.672	0.266

ALCOSAN POC	Model Subcatchment	Concept Municipal Project UID	BMP Type	Concept Municipal Project Area (acres)	Public ROW or Parcel		Concept Municipal Project Individual Drainage Area (acres)*	Concept Municipal Project Individual Project Impervious Drainage Area (acres)*
					Area of Municipal Project in Public ROW (acres)	Area of Municipal Project outside of Public ROW (acres)		
M-55	M-55-00_S1	BRAD_33	PP	1.021	1.021	0.000	3.954	1.922
M-54	M-54-00_S1	BRAD_34	PP	0.123	0.123	0.000	0.566	0.233
M-54	M-54-00_S1	BRAD_35	PP	0.224	0.197	0.027	1.836	0.634
M-54	M-54-00_S1	BRAD_36	PP	0.110	0.110	0.000	0.194	0.123
M-54	M-54-00_S1	BRAD_37	PP	0.302	0.302	0.000	4.391	1.694
M-54	M-54-00_S1	BRAD_38	PP	0.257	0.255	0.002	4.813	2.830
M-54	M-54-00_S1	BRAD_39	PP	0.140	0.140	0.000	1.339	0.952
M-54	M-54-00_S1	BRAD_40	PP	0.077	0.077	0.000	0.676	0.374
M-54	M-54-00_S1	BRAD_41	PP	0.041	0.040	0.001	1.395	0.516
M-54	M-53-00-M1_S1	BRAD_42	PP	0.249	0.249	0.000	11.685	6.217
M-54	M-54-00_S1	BRAD_43	PP	0.107	0.107	0.000	2.037	0.784
M-53	M-53-00-M1_S1	BRAD_44	PP	0.500	0.500	0.000	2.517	1.417
M-53	M-53-00-M1_S1	BRAD_45	PP	0.088	0.088	0.000	0.511	0.304
M-53	M-53-00-M1_S1	BRAD_46	PP	0.068	0.067	0.001	0.767	0.203
M-53	M-53-00-M1_S1	BRAD_47	PP	0.163	0.163	0.000	0.946	0.255
M-53	M-53-00-M1_S1	BRAD_48	PP	0.208	0.208	0.000	2.653	1.288
M-52	M-52-00_S1	BRAD_50	PP	0.084	0.080	0.004	0.555	0.211
M-52	M-52-00_S1	BRAD_51	PP	0.196	0.196	0.000	1.532	0.735
M-52	M-52-00_S1	BRAD_52	PP	0.090	0.090	0.000	0.920	0.422
M-52	M-52-00_S1	BRAD_53	PP	0.131	0.131	0.000	0.608	0.408
M-53	M-53-00-M1_S1	BRAD_54	PP	0.415	0.412	0.003	3.627	1.744
M-52	M-52-00_S1	BRAD_55	PP	0.046	0.039	0.007	0.166	0.099
M-52	M-52-00_S1	BRAD_56	PP	0.037	0.035	0.002	0.946	0.392
M-52	M-52-00_S1	BRAD_57	PP	0.361	0.359	0.002	2.797	1.404
M-52	M-52-00_S1	BRAD_60	PP	0.122	0.122	0.000	0.713	0.303
M-51	M5100-POC-L-01_S1	BRAD_61	PP	0.431	0.431	0.000	1.703	1.067
M-52	M-52-00_S1	BRAD_64	PP	0.060	0.045	0.015	0.652	0.255
M-52	M-52-00_S1	BRAD_65	PP	0.027	0.027	0.000	0.060	0.036
M-52	M-52-00_S1	BRAD_66	PP	0.031	0.027	0.004	0.160	0.080
M-51	M5100-POC-L-01_S1	BRAD_68	PP	0.781	0.781	0.000	5.599	3.860
M-51	M5100-POC-L-01_S1	BRAD_69	PP	0.273	0.211	0.062	1.999	1.161
M-51	M5100-POC-L-01_S1	BRAD_70	PP	0.111	0.110	0.001	1.097	0.803
M-60	M-60-00_S1	BRAD_71	PP	0.305	0.304	0.001	7.943	6.474
M-60	M-60-00_S1	BRAD_72	PP	0.049	0.049	0.000	0.325	0.402
M-56	M-56-00-M16_S1	BRAD_73	PP	0.368	0.368	0.000	2.871	1.076
M-56	M-56-00-M16_S1	BRAD_74	PP	0.029	0.029	0.000	0.135	0.089
M-56	M-56-00-M16_S1	BRAD_75	PP	0.123	0.123	0.000	1.743	1.306
M-57	M-57-00-M1_S1	BRAD_76	PP	0.128	0.128	0.000	0.658	0.499

ALCOSAN POC	Model Subcatchment	Concept Municipal Project UID	BMP Type	Concept Municipal Project Area (acres)	Public ROW or Parcel		Concept Municipal Project Individual Drainage Area (acres)*	Concept Municipal Project Individual Project Impervious Drainage Area (acres)*
					Area of Municipal Project in Public ROW (acres)	Area of Municipal Project outside of Public ROW (acres)		
M-57	M-57-00-M1_S1	BRAD_77	PP	0.064	0.064	0.000	0.461	0.387
M-58	M-58-00_S1	BRAD_78	PP	0.133	0.133	0.000	2.330	2.706
M-57	M-57-00-M1_S1	BRAD_79	PP	0.070	0.070	0.000	4.738	2.007
M-56	M-56-00-M16_S1	BRAD_80	PP	0.047	0.044	0.003	0.759	0.384
M-53	M-53-00-M1_S1	BRAD_81	PP	0.121	0.083	0.038	1.003	0.311
M-60	M-60-00_S1	BRAD_82	PP	0.122	0.000	0.122	0.324	0.418
M-58	M-58-00_S1	BRAD_83	PP	0.063	0.063	0.000	2.211	2.310
M-55	M-55-00_S1	BRAD_84	PP	0.336	0.293	0.043	0.755	0.466
M-57	M5700-MB-S-02_S1	BRAD_85	PP	0.095	0.091	0.004	0.193	0.119
M-55	M-55-00_S1	BRAD_86	PP	0.190	0.068	0.122	0.577	0.260
M-54	M-54/M-55_S1	BRAD_87	PP	0.155	0.155	0.000	25.929	10.121
M-52	M-52-00_S1	BRAD_88	PP	0.125	0.125	0.000	1.982	0.700
M-51	M5100-POC-L-01_S1	BRAD_89	PP	0.702	0.702	0.000	9.194	4.441
M-51	M5100-POC-L-01_S1	BRAD_90	PP	0.116	0.116	0.000	6.879	2.029
M-51	M5100-POC-L-01_S1	BRAD_91	PP	0.243	0.243	0.000	13.571	4.471
M-54	M-54-00_S1	BRAD_93	PP	0.363	0.363	0.000	0.787	0.440
M-51	M5100-POC-L-01_S1	BRAD_94	PP	0.167	0.166	0.001	0.609	0.338
M-54	M-54/M-55_S1	BRAD_95	PP	0.174	0.169	0.005	1.789	0.798
M-54	M-54/M-55_S1	BRAD_96	PP	0.298	0.298	0.000	3.710	1.763
M-54	M-54/M-55_S1	BRAD_97	PP	0.044	0.044	0.000	0.283	0.161
M-54	M-54/M-55_S1	BRAD_98	PP	0.067	0.067	0.000	0.230	0.126
M-54	M-54/M-55_S1	BRAD_99	PP	0.072	0.072	0.000	0.782	0.341
M-54	M-54/M-55_S1	BRAD_100	PP	0.030	0.030	0.000	0.738	0.292
M-51	M-54/M-55_S1	BRAD_101	PP	0.008	0.004	0.004	0.065	0.015
M-54	M-54/M-55_S1	BRAD_102	PP	0.117	0.078	0.039	1.592	0.695
M-51	M5100-POC-L-01_S1	BRAD_103	PP	0.163	0.163	0.000	1.530	0.621
M-54	M-54/M-55_S1	BRAD_104	PP	0.548	0.447	0.101	3.036	1.665
M-51	M5100-POC-L-01_S1	BRAD_105	PP	0.060	0.056	0.004	0.291	0.103
M-51	M5100-POC-L-01_S1	BRAD_106	PP	0.210	0.210	0.000	1.382	0.623
M-51	M5100-MB-L-02_S1	BRAD_107	PP	0.142	0.142	0.000	1.537	0.380
M-54	M-54/M-55_S1	BRAD_110	PP	0.095	0.094	0.001	0.416	0.182
M-54	M-54-00_S1	BRAD_111	PP	0.030	0.030	0.000	0.136	0.061
M-54	M-54/M-55_S1	BRAD_112	PP	0.044	0.042	0.002	0.614	0.260
M-54	M-54/M-55_S1	BRAD_114	PP	0.754	0.754	0.000	2.226	1.220
M-51	M5100-POC-L-01_S1	BRAD_115	PP	0.159	0.159	0.000	1.687	0.588
M-51	M5100-POC-L-01_S1	BRAD_116	PP	0.129	0.129	0.000	0.331	0.160
M-51	M5100-POC-L-01_S1	BRAD_117	PP	0.358	0.000	0.358	3.103	0.413
M-51	M5100-POC-L-01_S1	BRAD_119	PP	0.209	0.178	0.031	0.731	0.294

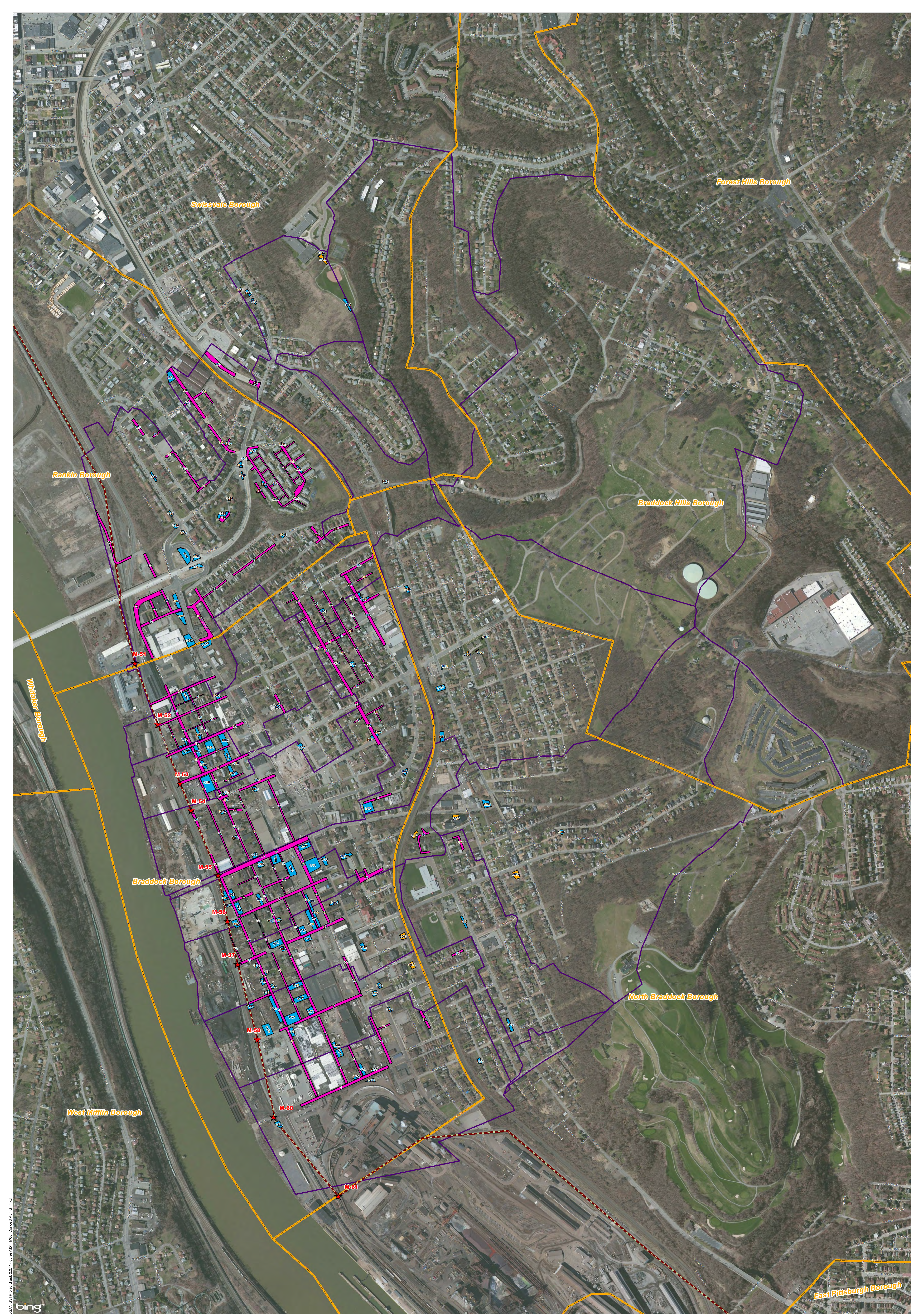
ALCOSAN POC	Model Subcatchment	Concept Municipal Project UID	BMP Type	Concept Municipal Project Area (acres)	Public ROW or Parcel		Concept Municipal Project Individual Drainage Area (acres)*	Concept Municipal Project Individual Project Impervious Drainage Area (acres)*
					Area of Municipal Project in Public ROW (acres)	Area of Municipal Project outside of Public ROW (acres)		
M-51	M5100-POC-L-01_S1	BRAD_120	PP	0.076	0.076	0.000	0.268	0.111
M-51	M5100-POC-L-01_S1	BRAD_121	PP	0.039	0.038	0.001	0.133	0.102
M-51	M5100-POC-L-01_S1	BRAD_123	PP	0.122	0.122	0.000	0.354	0.133
M-51	M5100-POC-L-01_S1	BRAD_130	PP	0.037	0.037	0.000	0.114	0.082
M-51	M5100-POC-L-01_S1	BRAD_138	PP	0.447	0.447	0.000	2.044	1.763
M-51	M5100-POC-L-01_S1	BRAD_139	PP	0.130	0.128	0.002	1.968	1.231
M-51	M5100-POC-L-01_S1	BRAD_140	PP	0.278	0.278	0.000	3.186	1.395
M-51	M5100-POC-L-01_S1	BRAD_141	PP	0.729	0.002	0.727	7.594	3.696
M-51	M5100-POC-L-01_S1	BRAD_142	PP	0.109	0.000	0.109	0.346	0.142
M-51	M5100-POC-L-01_S1	BRAD_143	PP	0.246	0.000	0.246	3.310	1.536
M-51	M5100-POC-L-01_S1	BRAD_144	PP	0.163	0.000	0.163	2.148	1.063
M-51	M5100-POC-L-01_S1	BRAD_145	PP	0.382	0.000	0.382	3.973	1.629
M-51	M5100-POC-L-01_S1	BRAD_149	PP	0.052	0.052	0.000	0.436	0.390
M-51	M5100-POC-L-01_S1	BRAD_152	PP	0.112	0.000	0.112	0.225	0.146
M-51	M5100-POC-L-01_S1	BRAD_155	PP	0.350	0.000	0.350	8.482	3.415
M-55	M5500-MB-L-02_S1	BRAD_156	PP	0.148	0.147	0.001	7.340	3.794
M-51	M5100-POC-L-01_S1	BRAD_157	PP	0.156	0.156	0.000	0.442	0.236
M-51	M5100-POC-L-01_S1	BRAD_158	PP	0.131	0.131	0.000	0.994	0.603
M-51	M5100-POC-L-01_S1	BRAD_159	PP	0.081	0.071	0.010	0.546	0.175
M-51	M5100-POC-L-01_S1	BRAD_160	PP	0.144	0.144	0.000	1.103	0.445
M-51	M5100-POC-L-01_S1	BRAD_1035	BR	0.287	0.287	0.000	0.665	0.136
M-51	M5100-POC-L-01_S1	BRAD_1036	BR	0.068	0.068	0.000	0.084	0.008
M-51	M5100-POC-L-01_S1	BRAD_1037	BR	0.090	0.090	0.000	0.144	0.055
M-51	M5100-POC-L-01_S1	BRAD_1038	BR	0.037	0.020	0.017	4.654	0.704
M-51	M5100-POC-L-01_S1	BRAD_1039	BR	0.032	0.000	0.032	0.066	0.000
M-51	M5100-POC-L-01_S1	BRAD_1040	BR	0.047	0.047	0.000	2.835	1.169
M-51	M5100-POC-L-01_S1	BRAD_1041	BR	0.148	0.027	0.121	0.232	0.081
M-51	M5100-MB-L-02_S1	BRAD_1042	BR	0.010	0.004	0.006	4.287	0.858
M-51	M5100-MB-L-02_S1	BRAD_1043	BR	0.075	0.000	0.075	0.119	0.000
M-51	M5100-MB-L-02_S1	BRAD_1044	BR	0.043	0.000	0.043	0.115	0.023
M-51	M5100-POC-L-01_S1	BRAD_1045	BR	0.131	0.014	0.117	0.823	0.420
M-51	M5100-POC-L-01_S1	BRAD_1046	BR	0.045	0.014	0.031	1.698	0.888
M-51	M5100-POC-L-01_S1	BRAD_1047	BR	0.046	0.046	0.000	0.247	0.132
M-51	M5100-POC-L-01_S1	BRAD_1048	BR	0.011	0.003	0.008	0.058	0.023
M-51	M5100-POC-L-01_S1	BRAD_1049	BR	0.024	0.024	0.000	0.229	0.122
M-51	M5100-POC-L-01_S1	BRAD_1050	BR	0.136	0.004	0.132	0.486	0.310
M-51	M5100-POC-L-01_S1	BRAD_1051	BR	0.156	0.001	0.155	0.182	0.032
M-51	M5100-POC-L-01_S1	BRAD_1052	BR	0.217	0.017	0.200	0.318	0.026

ALCOSAN POC	Model Subcatchment	Concept Municipal Project UID	BMP Type	Concept Municipal Project Area (acres)	Public ROW or Parcel		Concept Municipal Project Individual Drainage Area (acres)*	Concept Municipal Project Individual Project Impervious Drainage Area (acres)*
					Area of Municipal Project in Public ROW (acres)	Area of Municipal Project outside of Public ROW (acres)		
M-52	M-52-00_S1	BRAD_1053	BR	0.050	0.008	0.042	0.087	0.020
M-52	M-52-00_S1	BRAD_1054	BR	0.071	0.016	0.055	0.326	0.090
M-52	M-52-00_S1	BRAD_1055	BR	0.087	0.003	0.084	0.169	0.019
M-52	M-52-00_S1	BRAD_1056	BR	0.137	0.000	0.137	0.264	0.078
M-52	M-52-00_S1	BRAD_1057	BR	0.017	0.003	0.014	0.019	0.000
M-53	M-53-00-M1_S1	BRAD_1058	BR	0.395	0.002	0.393	0.791	0.200
M-53	M-53-00-M1_S1	BRAD_1059	BR	0.069	0.017	0.052	0.104	0.012
M-53	M-53-00-M1_S1	BRAD_1060	BR	0.116	0.035	0.081	0.297	0.091
M-53	M-53-00-M1_S1	BRAD_1061	BR	0.227	0.012	0.215	0.377	0.049
M-53	M-53-00-M1_S1	BRAD_1062	BR	0.196	0.026	0.170	1.049	0.391
M-53	M-53-00-M1_S1	BRAD_1063	BR	0.158	0.025	0.133	0.459	0.069
M-53	M-53-00-M1_S1	BRAD_1064	BR	0.120	0.025	0.095	0.135	0.021
M-53	M-53-00-M1_S1	BRAD_1065	BR	0.137	0.006	0.131	0.255	0.027
M-53	M-53-00-M1_S1	BRAD_1066	BR	0.024	0.010	0.014	0.030	0.003
M-53	M-53-00-M1_S1	BRAD_1067	BR	0.074	0.017	0.057	2.139	0.960
M-54	M-53-00-M1_S1	BRAD_1068	BR	0.012	0.004	0.008	10.950	5.768
M-54	M-54-00_S1	BRAD_1069	BR	0.016	0.005	0.011	0.064	0.014
M-54	M-54-00_S1	BRAD_1070	BR	0.042	0.009	0.033	0.821	0.336
M-54	M-54-00_S1	BRAD_1071	BR	0.027	0.006	0.021	0.179	0.048
M-54	M-54/M-55_S1	BRAD_1072	BR	0.233	0.033	0.200	1.860	0.480
M-54	M-54/M-55_S1	BRAD_1073	BR	0.011	0.003	0.008	0.057	0.019
M-54	M-54/M-55_S1	BRAD_1074	BR	0.055	0.000	0.055	0.879	0.373
M-54	M-54/M-55_S1	BRAD_1075	BR	0.008	0.002	0.006	0.014	0.001
M-54	M-54-00_S1	BRAD_1076	BR	0.035	0.014	0.021	0.064	0.021
M-54	M-54/M-55_S1	BRAD_1077	BR	0.045	0.027	0.018	21.180	8.839
M-54	M-54-00_S1	BRAD_1078	BR	0.051	0.004	0.047	0.654	0.329
M-54	M-54/M-55_S1	BRAD_1079	BR	0.081	0.041	0.040	0.212	0.084
M-54	M-54/M-55_S1	BRAD_1080	BR	0.023	0.013	0.010	0.164	0.033
M-54	M-54-00_S1	BRAD_1081	BR	0.024	0.011	0.013	0.069	0.024
M-54	M-54-00_S1	BRAD_1082	BR	0.036	0.008	0.028	0.063	0.008
M-54	M-54-00_S1	BRAD_1083	BR	0.074	0.013	0.061	0.093	0.001
M-55	M-55-00_S1	BRAD_1084	BR	0.098	0.000	0.098	0.416	0.069
M-55	M5500-MB-L-02_S1	BRAD_1085	BR	0.030	0.010	0.020	0.074	0.010
M-55	M5400-MB-L02-M54/M55	BRAD_1086	BR	0.091	0.010	0.081	9.502	4.160
M-55	M5400-MB-L02-M54/M55	BRAD_1087	BR	0.110	0.016	0.094	0.845	0.353
M-55	M5400-MB-L02-M54/M55	BRAD_1088	BR	0.007	0.000	0.007	0.491	0.125
M-55	M5400-MB-L02-M54/M55	BRAD_1089	BR	0.051	0.014	0.037	0.054	0.000
M-55	M5500-MB-L-02_S1	BRAD_1090	BR	0.128	0.009	0.119	39.974	13.884

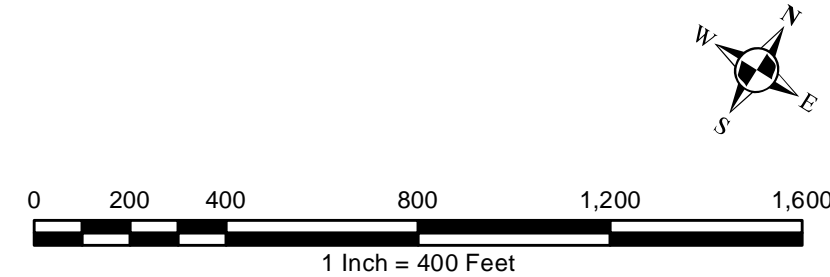
ALCOSAN POC	Model Subcatchment	Concept Municipal Project UID	BMP Type	Concept Municipal Project Area (acres)	Public ROW or Parcel		Concept Municipal Project Individual Drainage Area (acres)*	Concept Municipal Project Individual Project Impervious Drainage Area (acres)*
					Area of Municipal Project in Public ROW (acres)	Area of Municipal Project outside of Public ROW (acres)		
M-56	M-56-00-M16_S1	BRAD_1091	BR	0.376	0.011	0.365	0.888	0.197
M-56	M-55-00_S1	BRAD_1092	BR	0.162	0.009	0.153	1.040	0.232
M-56	M-56-00-M16_S1	BRAD_1093	BR	0.264	0.001	0.263	0.430	0.139
M-56	M-56-00-M16_S1	BRAD_1094	BR	0.194	0.032	0.162	0.381	0.129
M-56	M-56-00-M16_S1	BRAD_1095	BR	0.090	0.022	0.068	0.122	0.014
M-56	M-56-00-M16_S1	BRAD_1096	BR	0.093	0.003	0.090	1.251	0.602
M-56	M-56-00-M16_S1	BRAD_1097	BR	0.153	0.021	0.132	0.435	0.113
M-56	M-56-00-M16_S1	BRAD_1098	BR	0.105	0.026	0.079	0.228	0.023
M-56	M-56-00-M16_S1	BRAD_1099	BR	0.097	0.040	0.057	0.280	0.081
M-56	M-56-00-M16_S1	BRAD_1100	BR	0.033	0.007	0.026	0.040	0.005
M-56	M-55-00_S1	BRAD_1101	BR	0.090	0.025	0.065	0.322	0.003
M-56	M-56-00-M16_S1	BRAD_1102	BR	0.104	0.025	0.079	0.386	0.232
M-56	M-56-00-M16_S1	BRAD_1103	BR	0.027	0.014	0.013	0.827	0.274
M-56	M-56-00-M16_S1	BRAD_1104	BR	0.050	0.013	0.037	0.571	0.071
M-56	M-56-00-M16_S1	BRAD_1105	BR	0.084	0.000	0.084	0.268	0.184
M-57	M-57-00-M1_S1	BRAD_1106	BR	0.039	0.010	0.029	0.249	0.116
M-57	M-57-00-M1_S1	BRAD_1107	BR	0.200	0.038	0.162	1.710	0.565
M-57	M-57-00-M1_S1	BRAD_1108	BR	0.205	0.007	0.198	0.272	0.034
M-57	M-57-00-M1_S1	BRAD_1109	BR	0.044	0.011	0.033	0.447	0.272
M-57	M5700-MB-S-02_S1	BRAD_1110	BR	0.097	0.015	0.082	0.261	0.234
M-57	M-57-00-M1_S1	BRAD_1111	BR	0.099	0.008	0.091	1.009	0.289
M-57	M-57-00-M1_S1	BRAD_1112	BR	0.078	0.010	0.068	0.088	0.000
M-57	M5700-MB-S-02_S1	BRAD_1113	BR	0.062	0.023	0.039	0.772	0.706
M-57	M-57-00-M1_S1	BRAD_1114	BR	0.032	0.003	0.029	0.503	0.118
M-57	M-57-00-M1_S1	BRAD_1115	BR	0.011	0.002	0.009	0.171	0.029
M-57	M-57-00-M1_S1	BRAD_1116	BR	0.032	0.013	0.019	0.896	0.458
M-57	M-57-00-M1_S1	BRAD_1117	BR	0.133	0.013	0.120	0.252	0.060
M-57	M-57-00-M1_S1	BRAD_1118	BR	0.048	0.016	0.032	1.118	0.370
M-57	M-57-00-M1_S1	BRAD_1119	BR	0.063	0.009	0.054	0.089	0.013
M-57	M-57-00-M1_S1	BRAD_1120	BR	0.135	0.001	0.134	6.693	3.834
M-58	M-58-00_S1	BRAD_1121	BR	0.114	0.026	0.088	3.346	3.018
M-58	M-58-00_S1	BRAD_1122	BR	0.046	0.015	0.031	0.663	0.422
M-58	M-58-00_S1	BRAD_1123	BR	0.164	0.017	0.147	0.195	0.017
M-58	M-58-00_S1	BRAD_1124	BR	0.182	0.013	0.169	1.259	0.884
M-58	M-58-00_S1	BRAD_1125	BR	0.065	0.025	0.040	0.802	0.518
M-58	M-58-00_S1	BRAD_1126	BR	0.054	0.009	0.045	0.082	0.000
M-58	M-58-00_S1	BRAD_1127	BR	0.324	0.062	0.262	1.339	0.286
M-58	M-58-00_S1	BRAD_1128	BR	0.078	0.009	0.069	0.172	0.004

ALCOSAN POC	Model Subcatchment	Concept Municipal Project UID	BMP Type	Concept Municipal Project Area (acres)	Public ROW or Parcel		Concept Municipal Project Individual Drainage Area (acres)*	Concept Municipal Project Individual Project Impervious Drainage Area (acres)*
					Area of Municipal Project in Public ROW (acres)	Area of Municipal Project outside of Public ROW (acres)		
M-58	M-58-00_S1	BRAD_1129	BR	0.241	0.087	0.154	1.255	0.239
M-58	M-58-00_S1	BRAD_1130	BR	0.216	0.067	0.149	0.411	0.050
M-58	M-58-00_S1	BRAD_1131	BR	0.080	0.000	0.080	0.095	0.005
M-60	M-60-00_S1	BRAD_1132	BR	0.024	0.009	0.015	0.390	0.138
M-60	M-60-00_S1	BRAD_1133	BR	0.044	0.019	0.025	1.446	1.232
M-60	M-60-00_S1	BRAD_1134	BR	0.088	0.008	0.080	0.773	1.118
M-60	M-60-00_S1	BRAD_1135	BR	0.033	0.006	0.027	0.049	0.000
M-60	M-60-00_S1	BRAD_1136	BR	0.127	0.000	0.127	0.253	0.028
M-60	M-60-00_S1	BRAD_1137	BR	0.044	0.000	0.044	0.051	0.004
M-60	M-60-00_S1	BRAD_1138	BR	0.011	0.002	0.009	0.018	0.006
M-60	M-60-00_S1	BRAD_1139	BR	0.072	0.000	0.072	0.193	0.029
M-51	M5100-MB-L-02_S1	BRAD_1219	BR	0.027	0.018	0.009	0.036	0.015
M-51	M5100-MB-L-02_S1	BRAD_1220	BR	0.044	0.017	0.027	0.051	0.009
M-51	M5100-MB-L-02_S1	BRAD_1221	BR	0.017	0.007	0.010	0.106	0.019
M-51	M5100-POC-L-01_S1	BRAD_1222	BR	0.036	0.036	0.000	0.086	0.033
M-51	M5100-POC-L-01_S1	BRAD_1223	BR	0.023	0.021	0.002	0.032	0.009
M-51	M5100-POC-L-01_S1	BRAD_1224	BR	0.079	0.079	0.000	0.163	0.065
M-51	M5100-POC-L-01_S1	BRAD_1225	BR	0.010	0.010	0.000	0.071	0.008
M-51	M5100-POC-L-01_S1	BRAD_1226	BR	0.046	0.000	0.046	0.048	0.006
M-51	M5100-POC-L-01_S1	BRAD_1227	BR	0.014	0.000	0.014	0.215	0.079
M-51	M5100-POC-L-01_S1	BRAD_1228	BR	0.062	0.000	0.062	1.461	0.447
M-51	M5100-POC-L-01_S1	BRAD_1229	BR	0.013	0.000	0.013	0.098	0.053
M-51	M5100-POC-L-01_S1	BRAD_1230	BR	0.029	0.014	0.015	0.044	0.009
M-51	M5100-POC-L-01_S1	BRAD_1231	BR	0.042	0.000	0.042	1.518	0.418
M-51	M5100-POC-L-01_S1	BRAD_1232	BR	0.017	0.000	0.017	0.233	0.052
M-51	M5100-POC-L-01_S1	BRAD_1247	BR	0.016	0.010	0.006	0.624	0.624
M-52	M-52-00_S1	BRAD_1257	BR	0.013	0.002	0.011	0.079	0.020
M-52	M-52-00_S1	BRAD_1259	BR	0.026	0.005	0.021	0.043	0.025
M-54	M-54-00_S1	BRAD_1260	BR	0.024	0.000	0.024	0.026	0.000
M-57	M-55-00_S1	BRAD_1261	BR	0.049	0.013	0.036	0.053	0.000
M-55	M-55-00_S1	BRAD_1262	BR	0.016	0.000	0.016	0.030	0.007
M-56	M-56-00-M16_S1	BRAD_1263	BR	0.036	0.006	0.030	1.526	0.783
M-56	M-56-00-M16_S1	BRAD_1264	BR	0.023	0.012	0.011	0.117	0.042
M-60	M-60-00_S1	BRAD_1265	BR	0.054	0.037	0.017	0.598	0.790
M-58	M-58-00_S1	BRAD_1266	BR	0.028	0.019	0.009	0.118	0.190
M-57	M-57-00-M1_S1	BRAD_2001	IB	0.081	0.000	0.081	0.155	0.000
M-55	M5500-MB-L-02_S1	BRAD_2002	IB	0.114	0.000	0.114	0.285	0.070
M-55	M-55-00_S1	BRAD_2003	IB	0.047	0.000	0.047	0.196	0.040

ALCOSAN POC	Model Subcatchment	Concept Municipal Project UID	BMP Type	Concept Municipal Project Area (acres)	Public ROW or Parcel		Concept Municipal Project Individual Drainage Area (acres)*	Concept Municipal Project Individual Project Impervious Drainage Area (acres)*
					Area of Municipal Project in Public ROW (acres)	Area of Municipal Project outside of Public ROW (acres)		
M-55	M5500-MB-L-02_S1	BRAD_2004	IB	0.036	0.000	0.036	0.254	0.098
M-55	M5400-MB-L02-M54/M55	BRAD_2005	IB	0.007	0.000	0.007	0.069	0.024
M-55	M5400-MB-L02-M54/M55	BRAD_2006	IB	0.004	0.000	0.004	24.166	6.531
M-55	M5400-MB-L02-M54/M55	BRAD_2007	IB	0.008	0.000	0.008	0.076	0.017
M-51	M5100-MB-L-02_S1	BRAD_2013	IB	0.080	0.000	0.080	0.255	0.005
M-58	M-58-00_S1	BRAD_2014	IB	0.065	0.000	0.065	0.234	0.000
M-60	M-60-00_S1	BRAD_2015	IB	0.045	0.000	0.045	0.096	0.002
M-55	M-55-00_S1	BRAD_2016	IB	0.090	0.000	0.090	0.266	0.266
M-54	M-54/M-55_S1	BRAD_2018	IB	0.029	0.000	0.029	0.077	0.002

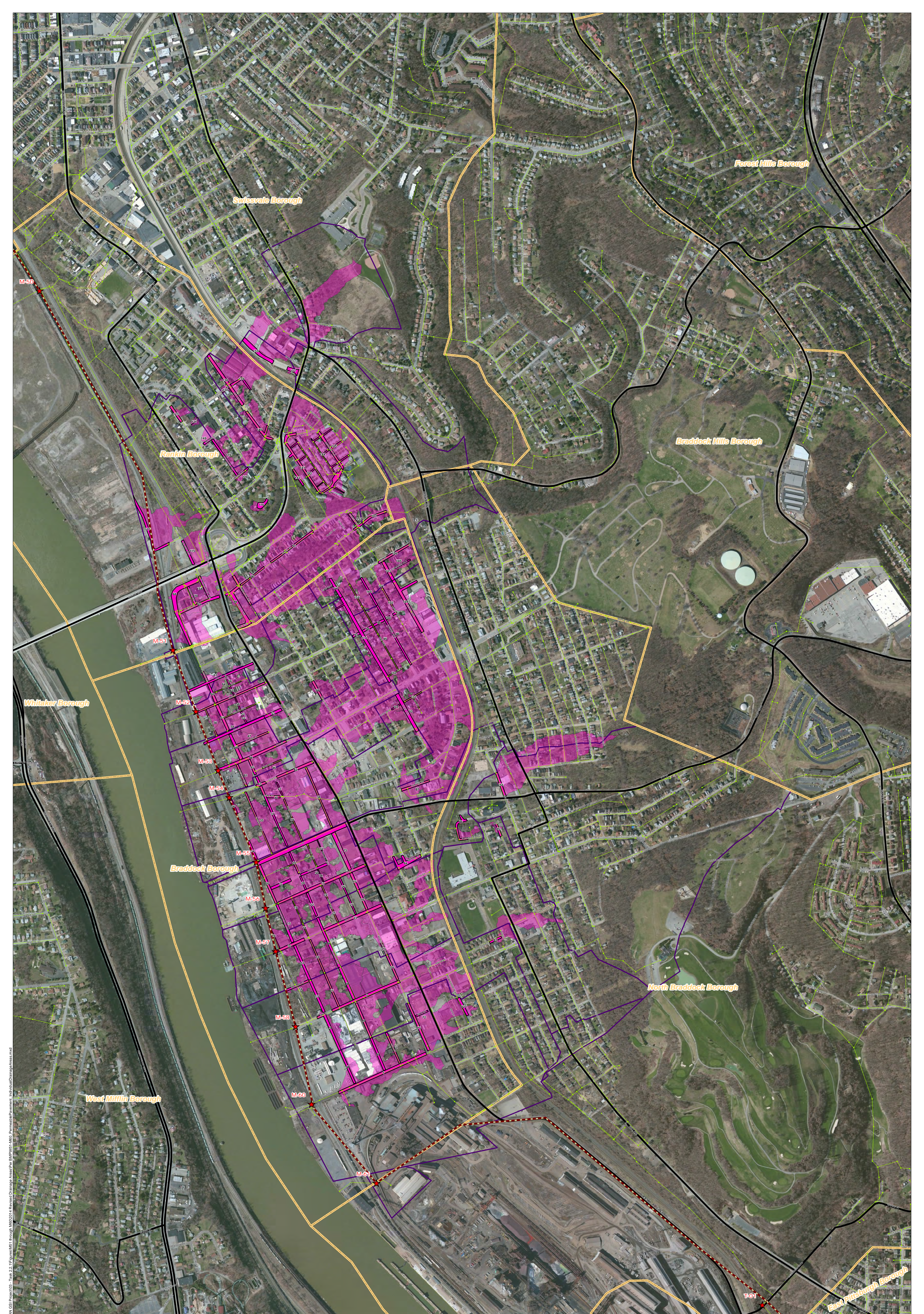


- Bioretention Basin
- Infiltration Basin
- Permeable Pavement
- Combined Sewer Subcatchment

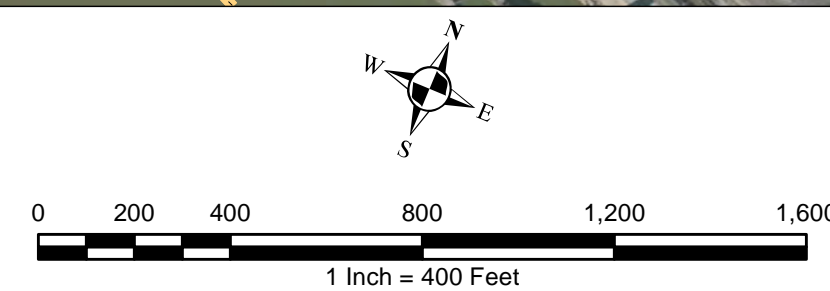


ALCOSAN GSI Project M-51
 through M-60
 Concept Municipal GSI Projects

File: N:\PROJ\3036309-14_ALCOSAN_GSI\ProjectTask_221\Figures\M51_M60_ConceptMunicipal.mxd
 Date: 11/15/2011 10:58:11 AM



- ★ ALCOSAN Structures
- ALCOSAN Shallow-Cut Interceptor
- - - ALCOSAN Deep Tunnel Interceptor
- One Overall Manholes
- One Overall Sewerlines
- Permeable Pavement Municipal Projects
- Permeable Pavement Drainage Area
- State Roads
- Combined Sewer Subcatchment
- Municipal Boundaries

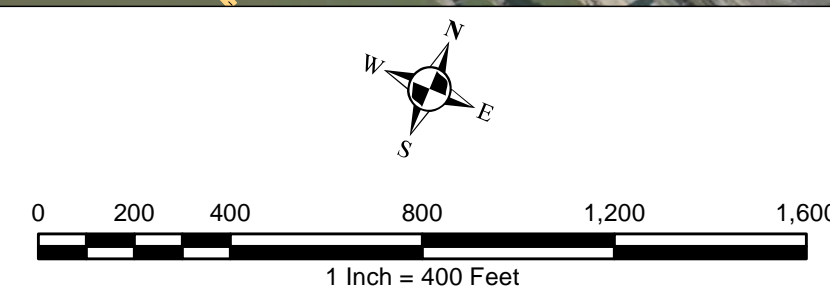


ALCOSAN GSI Project
Braddock (M-51 thru M-60)
 Concept Municipal Permeable Pavement GSI Projects
 Individual Project Drainage Areas

File: I:\PROJECTS\3434\3434_05_ALCOSAN_GSI_Project\03 - Task 2.1\Figures\M51_Through_M60_2014_Rev02\Drawings\PermeablePavement_IndividualDrainageAreas.mxd



- ★ ALCOGAN Structures
- ALCOGAN Shallow-Cut Interceptor
- ALCOGAN Deep Tunnel Interceptor
- One Overall Manholes
- One Overall Sewerlines
- Infiltration Basin Municipal Projects
- Infiltration Basin Drainage Area
- State Roads
- Combined Sewer Subcatchment
- Municipal Boundaries



ALCOGAN GSI Project
 Braddock (M-51 thru M-60)
 Concept Municipal Infiltration Basin GSI Projects
 Individual Project Drainage Areas

P:\In\PROJ\34343436\ALCOGAN GSI Project\03 - Task 2.1\Figures\M51 through M60\2011 - Revised Drainage Areas\Per BMP\MS1-M60_InfiltrationBasin_IndividualDrainageAreas.mxd

Braddock Concept Commercial / Institutional Permeable Pavement, Green Roof, and Special Case GSI Projects: Summary Table

December 23, 2013
Revised October 10, 2014

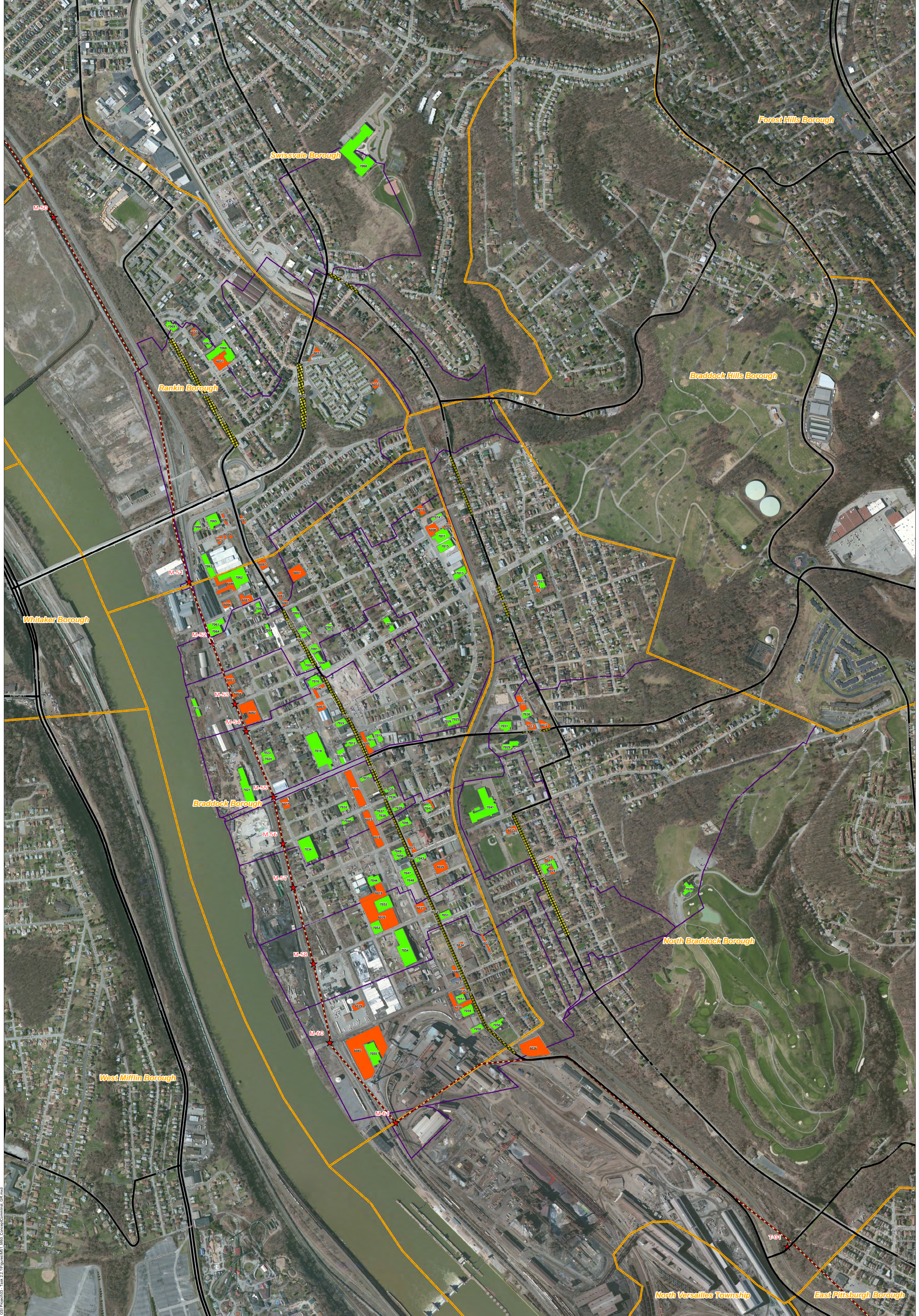
ALCOSAN POC	Model Subcatchment	Concept Comm / Inst Project UID	BMP Type	Concept Municipal Project Area (acres)	Taxable (acres)	Exempt (acres)	Provisionally Exempt (acres)	Public ROW (acres)
M-52	M-52-00_S1	BRAD_6001	CPP	0.446	0.000	0.446	0.000	0.000
M-53	M-53-00-M1_S1	BRAD_6002	CPP	0.735	0.732	0.000	0.000	0.003
M-53	M-53-00-M1_S1	BRAD_6003	CPP	0.180	0.000	0.169	0.000	0.011
M-53	M-53-00-M1_S1	BRAD_6004	CPP	0.122	0.115	0.000	0.000	0.007
M-54	M-54-00_S1	BRAD_6005	CPP	0.209	0.205	0.000	0.000	0.004
M-54	M-54-00_S1	BRAD_6006	CPP	0.150	0.000	0.149	0.000	0.001
M-54	M-54-00_S1	BRAD_6007	CPP	0.164	0.144	0.000	0.000	0.020
M-54	M-54/M-55_S1	BRAD_6008	CPP	0.276	0.276	0.000	0.000	0.000
M-54	M-54/M-55_S1	BRAD_6009	CPP	0.084	0.084	0.000	0.000	0.000
M-54	M-54/M-55_S1	BRAD_6010	CPP	0.147	0.073	0.000	0.000	0.074
M-55	M5500-MB-L-02_S1	BRAD_6011	CPP	0.219	0.219	0.000	0.000	0.000
M-55	M5500-MB-L-02_S1	BRAD_6012	CPP	0.168	0.157	0.000	0.000	0.011
M-55	M5500-MB-L-02_S1	BRAD_6013	CPP	0.148	0.148	0.000	0.000	0.000
M-55	M5400-MB-L02-M54/M55_S1	BRAD_6014	CPP	0.094	0.000	0.094	0.000	0.000
M-56	M-56-00-M16_S1	BRAD_6015	CPP	0.279	0.000	0.279	0.000	0.000
M-56	M-56-00-M16_S1	BRAD_6016	CPP	0.675	0.000	0.663	0.000	0.012
M-56	M-56-00-M16_S1	BRAD_6017	CPP	0.167	0.001	0.166	0.000	0.000
M-57	M-57-00-M1_S1	BRAD_6018	CPP	0.354	0.000	0.343	0.000	0.011
M-57	M-57-00-M1_S1	BRAD_6019	CPP	0.384	0.000	0.368	0.000	0.016
M-57	M-57-00-M1_S1	BRAD_6020	CPP	0.334	0.333	0.000	0.000	0.001
M-57	M-57-00-M1_S1	BRAD_6021	CPP	0.123	0.000	0.123	0.000	0.000
M-57	M-57-00-M1_S1	BRAD_6022	CPP	0.083	0.083	0.000	0.000	0.000
M-57	M5700-MB-S-02_S1	BRAD_6023	CPP	0.085	0.000	0.085	0.000	0.000
M-57	M5700-MB-S-02_S1	BRAD_6024	CPP	0.079	0.000	0.079	0.000	0.000
M-57	M5700-MB-S-02_S1	BRAD_6025	CPP	0.128	0.121	0.003	0.000	0.004

ALCOSAN POC	Model Subcatchment	Concept Comm / Inst Project UID	BMP Type	Concept Municipal Project Area (acres)	Taxable (acres)	Exempt (acres)	Provisionally Exempt (acres)	Public ROW (acres)
M-58	M-58-00_S1	BRAD_6026	CPP	1.491	0.006	1.458	0.000	0.027
M-58	M-58-00_S1	BRAD_6027	CPP	0.198	0.198	0.000	0.000	0.000
M-60	M-60-00_S1	BRAD_6029	CPP	0.182	0.160	0.000	0.000	0.022
M-60	M-60-00_S1	BRAD_6030	CPP	0.332	0.332	0.000	0.000	0.000
M-60	M-60-00_S1	BRAD_6031	CPP	0.030	0.023	0.000	0.000	0.007
M-51	M5100-POC-L-01_S1	BRAD_6032	CPP	0.095	0.095	0.000	0.000	0.000
M-60	M-60-00_S1	BRAD_6033	CPP	0.077	0.000	0.077	0.000	0.000
M-60	M-60-00_S1	BRAD_6034	CPP	0.068	0.000	0.068	0.000	0.000
M-60	M-60-00_S1	BRAD_6035	CPP	0.072	0.000	0.072	0.000	0.000
M-60	M-60-00_S1	BRAD_6036	CPP	0.977	0.975	0.000	0.000	0.002
M-51	M5100-POC-L-01_S1	BRAD_6051	CPP	0.426	0.000	0.418	0.000	0.008
M-51	M5100-POC-L-01_S1	BRAD_6052	CPP	0.127	0.000	0.127	0.000	0.000
M--51	M5100-POC-L-01_S1	BRAD_6053	CPP	0.123	0.000	0.123	0.000	0.000
M-51	M5100-POC-L-01_S1	BRAD_6055	CPP	0.093	0.093	0.000	0.000	0.000
M-51	M5100-POC-L-01_S1	BRAD_6081	CPP	0.069	0.000	0.069	0.000	0.000
M-51	M5100-POC-L-01_S1	BRAD_6082	CPP	0.078	0.000	0.078	0.000	0.000
M-51	M5100-POC-L-01_S1	BRAD_6083	CPP	0.167	0.000	0.167	0.000	0.000
M-51	M5100-POC-L-01_S1	BRAD_6084	CPP	0.132	0.132	0.000	0.000	0.000
M-60	M-60-00_S1	BRAD_6085	CPP	2.430	2.430	0.000	0.000	0.000
M-51	M5100-POC-L-01_S1	BRAD_6086	CPP	0.406	0.302	0.000	0.000	0.104
M-51	M5100-POC-L-01_S1	BRAD_6087	CPP	0.225	0.225	0.000	0.000	0.000
M-60	M-60-00_S1	BRAD_6088	CPP	0.114	0.114	0.000	0.000	0.000
M-51	M5100-POC-L-01_S1	BRAD_6089	CPP	0.080	0.047	0.000	0.000	0.033
M-51	M5100-POC-L-01_S1	BRAD_6090	CPP	0.062	0.059	0.000	0.000	0.003
M-51	M5100-POC-L-01_S1	BRAD_6091	CPP	0.061	0.000	0.000	0.000	0.061
M-52	M-52-00_S1	BRAD_7001	GR	0.167	0.167	0.000	0.000	0.000
M-52	M-52-00_S1	BRAD_7002	GR	0.128	0.128	0.000	0.000	0.000
M-52	M-52-00_S1	BRAD_7003	GR	0.083	0.000	0.083	0.000	0.000
M-52	M-52-00_S1	BRAD_7004	GR	0.090	0.090	0.000	0.000	0.000
M-52	M-52-00_S1	BRAD_7005	GR	0.205	0.205	0.000	0.000	0.000

ALCOSAN POC	Model Subcatchment	Concept Comm / Inst Project UID	BMP Type	Concept Municipal Project Area (acres)	Taxable (acres)	Exempt (acres)	Provisionally Exempt (acres)	Public ROW (acres)
M-52	M-52-00_S1	BRAD_7006	GR	0.118	0.117	0.000	0.000	0.001
M-52	M-52-00_S1	BRAD_7007	GR	0.227	0.227	0.000	0.000	0.000
M-52	M-52-00_S1	BRAD_7008	GR	0.269	0.262	0.000	0.000	0.007
M-53	M-53-00-M1_S1	BRAD_7009	GR	0.188	0.025	0.000	0.163	0.000
M-53	M-53-00-M1_S1	BRAD_7010	GR	0.169	0.169	0.000	0.000	0.000
M-54	M-54/M-55_S1	BRAD_7011	GR	0.383	0.382	0.000	0.000	0.001
M-54	M-54-00_S1	BRAD_7012	GR	0.164	0.164	0.000	0.000	0.000
M-54	M-54/M-55_S1	BRAD_7013	GR	0.250	0.250	0.000	0.000	0.000
M-54	M-54/M-55_S1	BRAD_7014	GR	0.088	0.087	0.000	0.000	0.001
M-54	M-54/M-55_S1	BRAD_7015	GR	0.292	0.292	0.000	0.000	0.000
M-54	M-54-00_S1	BRAD_7016	GR	0.276	0.000	0.276	0.000	0.000
M-54	M-54-00_S1	BRAD_7017	GR	0.189	0.186	0.000	0.000	0.003
M-54	M-54-00_S1	BRAD_7018	GR	1.071	1.054	0.000	0.000	0.017
M-54	M-54-00_S1	BRAD_7019	GR	0.157	0.000	0.157	0.000	0.000
M-54	M-54-00_S1	BRAD_7020	GR	0.161	0.161	0.000	0.000	0.000
M-54	M-54-00_S1	BRAD_7021	GR	0.677	0.677	0.000	0.000	0.000
M-54	M-54-00_S1	BRAD_7022	GR	0.166	0.162	0.000	0.000	0.004
M-54	M-54-00_S1	BRAD_7023	GR	0.125	0.125	0.000	0.000	0.000
M-54	M-54-00_S1	BRAD_7024	GR	0.218	0.218	0.000	0.000	0.000
M-54	M-54/M-55_S1	BRAD_7025	GR	0.149	0.147	0.000	0.000	0.002
M-54	M-54/M-55_S1	BRAD_7026	GR	0.135	0.132	0.000	0.000	0.003
M-55	M5400-MB-L02-M54/M55_S1	BRAD_7027	GR	0.188	0.000	0.188	0.000	0.000
M-55	M5500-MB-L-02_S1	BRAD_7028	GR	0.191	0.191	0.000	0.000	0.000
M-55	M5500-MB-L-02_S1	BRAD_7029	GR	0.232	0.000	0.231	0.000	0.001
M-55	M5500-MB-L-02_S1	BRAD_7030	GR	0.149	0.149	0.000	0.000	0.000
M-55	M5500-MB-L-02_S1	BRAD_7031	GR	0.247	0.000	0.245	0.000	0.002
M-56	M-56-00-M16_S1	BRAD_7032	GR	0.178	0.178	0.000	0.000	0.000
M-56	M-56-00-M16_S1	BRAD_7033	GR	0.115	0.115	0.000	0.000	0.000
M-56	M-56-00-M16_S1	BRAD_7034	GR	0.721	0.721	0.000	0.000	0.000
M-56	M-56-00-M16_S1	BRAD_7035	GR	0.091	0.091	0.000	0.000	0.000

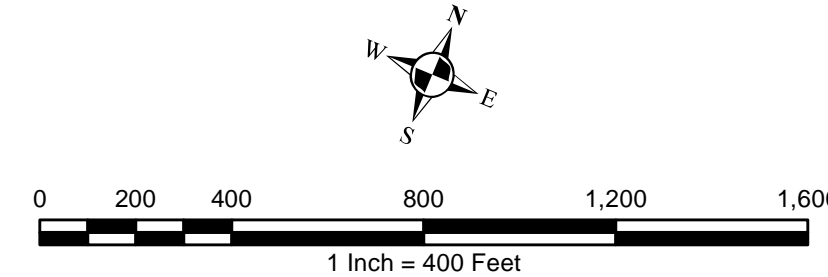
ALCOSAN POC	Model Subcatchment	Concept Comm / Inst Project UID	BMP Type	Concept Municipal Project Area (acres)	Taxable (acres)	Exempt (acres)	Provisionally Exempt (acres)	Public ROW (acres)
M-56	M-56-00-M16_S1	BRAD_7036	GR	0.095	0.095	0.000	0.000	0.000
M-56	M-56-00-M16_S1	BRAD_7037	GR	0.115	0.115	0.000	0.000	0.000
M-56	M-56-00-M16_S1	BRAD_7038	GR	0.183	0.125	0.058	0.000	0.000
M-56	M-56-00-M16_S1	BRAD_7039	GR	0.121	0.121	0.000	0.000	0.000
M-56	M-56-00-M16_S1	BRAD_7040	GR	0.115	0.115	0.000	0.000	0.000
M-57	M5700-MB-S-02_S1	BRAD_7041	GR	1.064	0.000	1.063	0.000	0.001
M-57	M-57-00-M1_S1	BRAD_7042	GR	0.130	0.130	0.000	0.000	0.000
M-57	M-57-00-M1_S1	BRAD_7043	GR	0.137	0.137	0.000	0.000	0.000
M-57	M-57-00-M1_S1	BRAD_7044	GR	0.250	0.247	0.003	0.000	0.000
M-57	M5700-MB-S-02_S1	BRAD_7045	GR	0.262	0.000	0.262	0.000	0.000
M-57	M-57-00-M1_S1	BRAD_7046	GR	0.172	0.001	0.170	0.000	0.001
M-57	M-57-00-M1_S1	BRAD_7047	GR	0.246	0.246	0.000	0.000	0.000
M-57	M-57-00-M1_S1	BRAD_7048	GR	0.245	0.245	0.000	0.000	0.000
M-57	M-57-00-M1_S1	BRAD_7049	GR	0.140	0.140	0.000	0.000	0.000
M-57	M-57-00-M1_S1	BRAD_7050	GR	0.170	0.170	0.000	0.000	0.000
M-58	M-58-00_S1	BRAD_7051	GR	0.184	0.183	0.000	0.000	0.001
M-58	M-58-00_S1	BRAD_7052	GR	0.466	0.002	0.464	0.000	0.000
M-58	M-58-00_S1	BRAD_7053	GR	0.276	0.276	0.000	0.000	0.000
M-58	M-58-00_S1	BRAD_7054	GR	1.024	1.018	0.000	0.000	0.006
M-60	M-60-00_S1	BRAD_7055	GR	0.524	0.523	0.000	0.000	0.001
M-60	M-60-00_S1	BRAD_7056	GR	0.188	0.187	0.000	0.000	0.001
M-60	M-60-00_S1	BRAD_7057	GR	0.155	0.000	0.155	0.000	0.000
M-60	M-60-00_S1	BRAD_7058	GR	0.160	0.159	0.000	0.000	0.001
M-60	M-60-00_S1	BRAD_7059	GR	0.270	0.270	0.000	0.000	0.000
M-51	M5100-MB-L-02_S1	BRAD_7060	GR	1.669	0.000	1.669	0.000	0.000
M-51	M5100-POC-L-01_S1	BRAD_7061	GR	0.232	0.232	0.000	0.000	0.000
M-51	M5100-POC-L-01_S1	BRAD_7062	GR	0.781	0.741	0.000	0.000	0.040
M-51	M5100-POC-L-01_S1	BRAD_7063	GR	0.338	0.338	0.000	0.000	0.000
M-51	M5100-POC-L-01_S1	BRAD_7064	GR	0.207	0.207	0.000	0.000	0.000
M-51	M5100-POC-L-01_S1	BRAD_7065	GR	0.331	0.330	0.000	0.000	0.001

ALCOSAN POC	Model Subcatchment	Concept Comm / Inst Project UID	BMP Type	Concept Municipal Project Area (acres)	Taxable (acres)	Exempt (acres)	Provisionally Exempt (acres)	Public ROW (acres)
M-51	M5100-POC-L-01_S1	BRAD_7066	GR	0.130	0.128	0.000	0.000	0.002
M-51	M5100-POC-L-01_S1	BRAD_7067	GR	0.126	0.000	0.126	0.000	0.000
M-51	M5100-POC-L-01_S1	BRAD_7068	GR	0.634	0.000	0.634	0.000	0.000
M-51	M5100-POC-L-01_S1	BRAD_7069	GR	0.165	0.165	0.000	0.000	0.000
M-60	M-60-00_S1	BRAD_8001	SRPP	1.116	0.136	0.051	0.018	0.911
M-55	M-55-00_S1	BRAD_8002	SRPP	0.260	0.000	0.000	0.000	0.260
M-55	M5500-MB-L-02_S1	BRAD_8003	SRPP	0.155	0.000	0.000	0.000	0.155
M-51	M5100-MB-L-02_S1	BRAD_8004	SRPP	0.306	0.000	0.000	0.000	0.306
M-51	M5100-POC-L-01_S1	BRAD_8005	SRPP	0.887	0.000	0.016	0.000	0.871
M-51	M5100-POC-L-01_S1	BRAD_8006	SRPP	1.573	0.023	0.023	0.000	1.527
M-52	M-52-00_S1	BRAD_8007	SRPP	0.605	0.000	0.000	0.000	0.605
M-54	M5400-MB-L02-M54/M55_S1	BRAD_8008	SRPP	0.479	0.000	0.000	0.000	0.479
M-54	M5400-MB-L02-M54/M55_S1	BRAD_8009	SRPP	0.305	0.019	0.000	0.004	0.282
M-54	M-54-00_S1	BRAD_8010	SRPP	0.824	0.000	0.000	0.000	0.824
M-56	M-56-00-M16_S1	BRAD_8011	SRPP	0.327	0.000	0.000	0.000	0.327
M-57	M5700-MB-S-02_S1	BRAD_8012	SRPP	1.343	0.000	0.000	0.000	1.343
M-57	M-57-00-M1_S1	BRAD_8013	SRPP	0.588	0.000	0.000	0.000	0.588
M-58	M-58-00_S1	BRAD_8014	SRPP	0.233	0.000	0.000	0.000	0.233



- ★ ALCOSAN Structures
- ALCOSAN Shallow-Cut Interceptor
- ALCOSAN Deep Tunnel Interceptor
- Special Case
- Concept Commercial / Institutional Permeable Pavement Projects
- Concept Green Roof Projects

- State Roads
- Combined Sewer Subcatchment
- Municipal Boundaries



ALCOSAN GSI Project
M-51 through M-60
Concept Commercial / Institutional
and Green Roof GSI Projects

Path: I:\PROJECTS\3434\05 ALCOSAN GSI Project\03 - Task 2.1 Figures\M51_M60_ConceptComments_GRI.mxd